



Criminal Justice Policy & Planning Division Monthly Indicators Report

RESEARCH, ANALYSIS & EVALUATION — WWW.CT.GOV/OPM/CriminalJustice/Research

Highlights

- On April 1, 2009, 19,069 inmates were incarcerated in State prison facilities. On the same day last year, 19,720 were incarcerated in State prison facilities.
- CJPPD projected that the average daily inmate population for the first week in April would be 19,023. The actual figure was 19,040.
- Court Services report that the number of criminal arrests across the state jumped 27%, from 8,682 in February to 11,055 in March. The March arrest figure is the highest since August 2005. Last month's increase in the number of arrests contributed to a 25% increase in the number of unsentenced offenders admitted to DOC facilities during March.
- The number of parole cases heard by the Board of Pardons and Parole in March remained fairly stable, increasing by only 1.8% over the February figure. (See Table 4A)
- Monthly inmate totals during the first four months of 2009 are significantly lower than prison population totals for the same months in 2008. (See Chart 4.)

The Criminal Justice Policy Advisory Commission (CJPAC) Research Workgroup meets regularly to discuss collaborative interagency research projects and is facilitated by the Office of Policy and Management, Criminal Justice Policy and Planning Division (CJPPD) Research, Analysis & Evaluation Unit. CJPAC Research Workgroup members, meeting schedules, agendas, minutes and other relevant information are available on the CJPPD Research website listed above.

For questions, please contact the Research Manager and CJPAC Research Workgroup Chairperson, Linda DeConti at linda.deconti@ct.gov

Six Month Prison Population

OPM's Criminal Justice Policy and Planning Division (CJPPD) currently projects that the state's inmate population will remain relatively stable over the next six-months. It is anticipated that the prison population should dip below 19,000 in May.

Several factors may contribute to further reductions in the size of the

State's prison population. The legislature is currently reviewing legislation that could re-instate the re-entry furlough program and reinstitute some form of discretionary "good-time" credit. Restoring the administrative review process at the Board of Pardons and Paroles would certainly expedite the parole process and increase the rate at which offenders enter community re-entry programs. Combined, these changes could result in a reduction of the prison population by several hundred inmates.

If the economy continues to worsen, the number of criminal arrests could increase over the short term. It is possible that fewer accused offenders will be able to meet their bail requirements. Were this to occur, greater pressures would be placed on existing prison diversion programs and if these programs are unable to adjust to meet the increased demand, the unsentenced population in state prisons could increase over current figures.

TABLE 1 – 6-Month Prison Population Forecast

	2009 Actual (*Avg Daily)	6 Month Population Forecast	Difference Actual vs. Projected	% Diff
MAR	19,053*	19,095	-42	-0.2%
APR	19040*	19,023	17	0.1%
MAY	-	18,849	-	-
JUN	-	18,866	-	-
JUL	-	18,913	-	-
AUG	-	18,937	-	-
SEP	-	19,070	-	-

CHART 1 – Total DOC Facility Population, Actual and Projected
March 1, 2007 to February 1, 2010

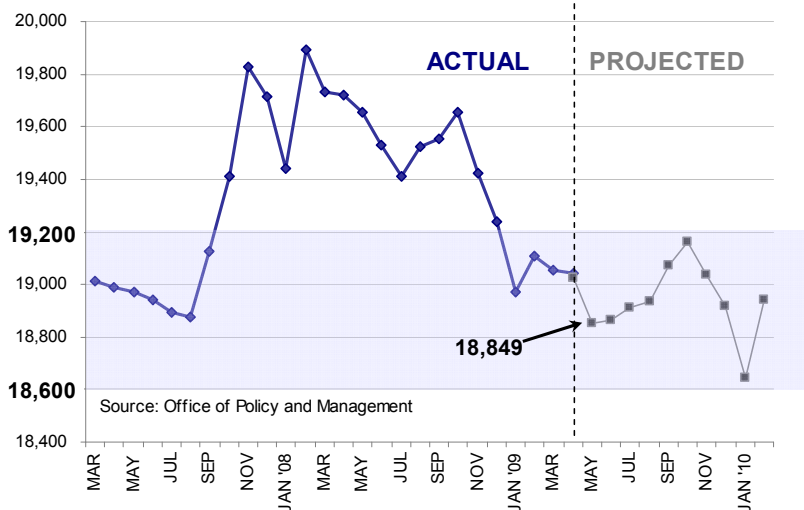
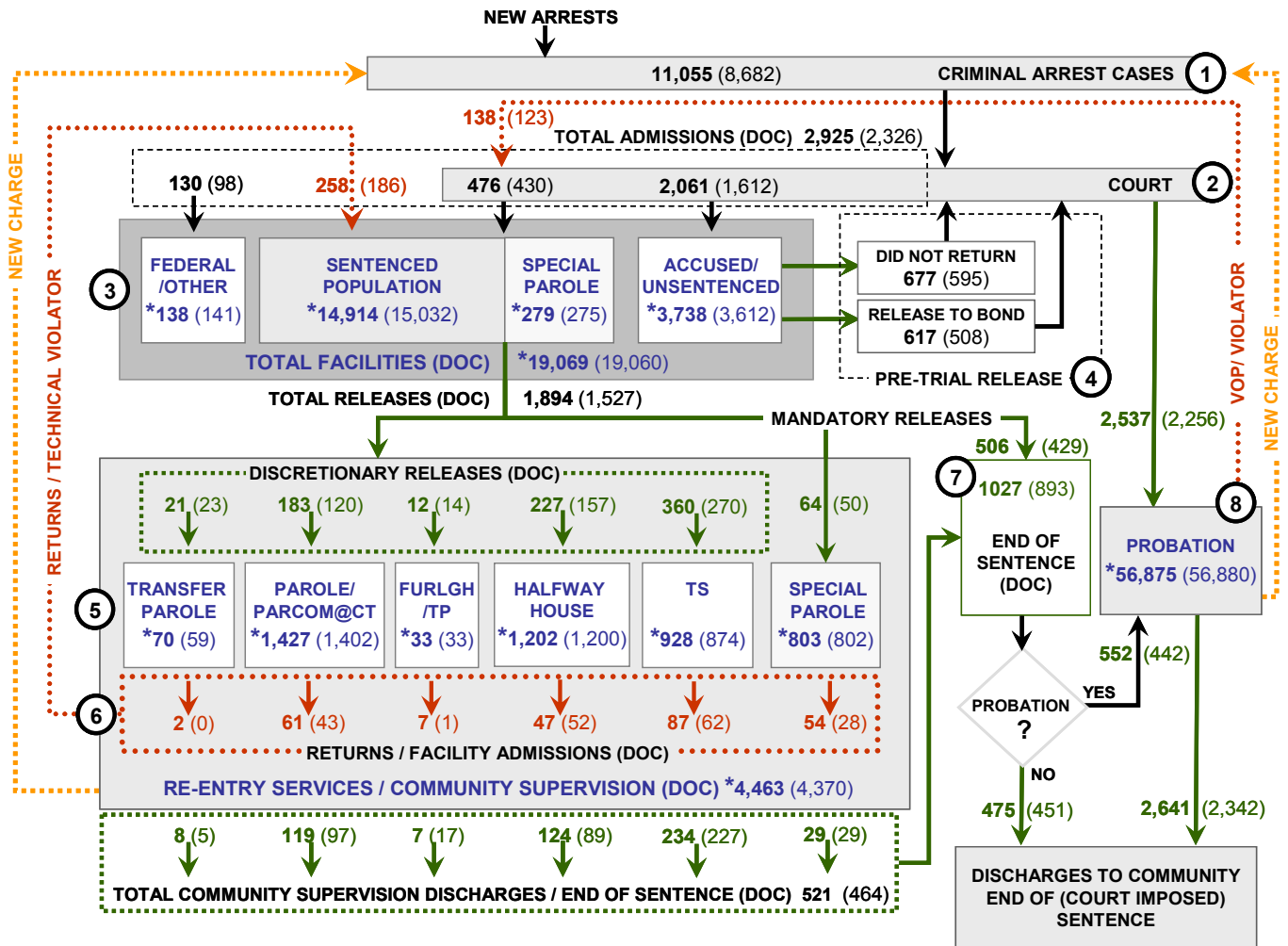


CHART 2 – Connecticut Criminal Justice System Overview



Asterisks (*) indicate single-day, snapshots of population count on April 1, 2009.
 Numbers enclosed by parentheses contain figures for the previous month.
 Data shown for New Split Sentence Probationer is only approximate due to processing difficulties.
 Sources: Arrest-Judicial/Court Operations; Court-Judicial/CSSD; Facility/Community Supervision-DOC

Unlike states that have county governments, the majority of agencies within Connecticut's criminal justice system are State agencies. The one exception is law enforcement, where there are over 90 local police departments and the Connecticut State Police.

- 1) Arrest:** An individual enters into the criminal justice system at the time of arrest.
- 2) Court:** During arraignment, judges review the charges filed against the accused and set a bail amount. Individuals who cannot meet the conditions of bail are placed in DOC facilities to await trial. If the defendant is convicted they may be sentenced to serve a period of probation, a term of incarceration or some other sanction.
- 3) DOC Facilities:** Total facility population at DOC contains the unsentenced population, which is awaiting trial, the sentenced population, inmates on special parole, and individuals charged in federal cases or non-state cases.
- 4) Pre-Trial Release:** Some defendants who are incarcerated pending the disposition of their cases may be eligible for a bond reduction or placement into pre-trial diversionary programs or treatment programs. These programs feature close coordination and cooperation between DOC, CSSD and the Department of Mental Health and Addiction Services (DMHAS).
- 5) Re-Entry Services:** Depending on several factors, an inmate may be eligible to complete a portion of his/her prison sentences under supervision of the DOC's Parole and Community Services Unit. Non-violent Inmates with sentences shorter than two years are eligible for Transitional Supervision after serving 50% of their sentences. Inmates serving sentences longer than two years may be eligible for parole.
- 6) Returns:** Offenders who violate the conditions of their community release may be returned to prison to serve out the remainder of their sentences.
- 7) End of Sentence:** At the end of their sentences some offenders are required to complete a period of post-release supervision. Split-sentence offenders enter probation where they are monitored by CSSD personnel. Offenders sentenced to special parole remain under DOC supervision.
- 8) Violation of Probation:** If an individual violates the terms of their probation, an arrest warrant is issued and the violator is returned to court.

TABLE 2 – Snapshot of Month DOC Population Counts

	2009			2008	% Change	
	Feb 1st	Mar 1st	Apr 1st	Apr 1st	Monthly	Annual
DOC Facility						
Federal/Other	130	141	138	183	-2.1%	-24.6%
Sentenced	14,941	15,032	14,914	15,429	-0.8%	-3.3%
Special Parole	278	275	279	365	1.5%	-23.6%
Accused/Unsentenced	3,758	3,612	3,738	3,743	3.5%	-0.1%
Total	19,107	19,060	19,069	19,720	0.0%	-3.3%
DOC Community						
Transfer Parole	42	59	70	30	18.6%	133.3%
Parole/ Parcom Total	1,395	1,402	1,427	1,302	1.8%	9.6%
Parole	1,232	1,237	1,273	1,144	2.9%	11.3%
Parcom @ CT	163	165	154	158	-6.7%	-2.5%
Furligh/Trans Place Total	23	33	33	0	0.0%	
Furlough	0	0	0	0		
Trans Placement	23	33	33	0	0.0%	
Halfway House Total	1,238	1,200	1,202	1,159	0.2%	3.7%
Comm Release	924	888	908	887	2.3%	2.4%
TS	161	169	159	152	-5.9%	4.6%
Parole	78	77	79	63	2.6%	25.4%
Transfer Parole	0	0	0	2		-100.0%
Special Parole	75	64	56	55	-12.5%	1.8%
TS Total	893	874	928	953	6.2%	-2.6%
Special Parole	777	802	803	697	0.1%	15.2%
Total	4,368	4,370	4,463	4,141	2.1%	7.8%

TABLE 3 – Total DOC Admissions and Releases by Month

	2009			2008	% Change	
	Jan	Feb	Mar	Mar	Monthly	Annual
Admissions						
Federal/Other	102	98	130	134	32.7%	-3.0%
Returns	187	186	258	222	38.7%	16.2%
Transfer Parole	2	-	2	3		-33.3%
Parole	53	43	61	37	41.9%	64.9%
Trans Plac/Furlough	1	1	7	-	600.0%	
HWH	33	52	47	47	-9.6%	0.0%
TS	71	62	87	100	40.3%	-13.0%
Special Parole	27	28	54	35	92.9%	54.3%
New Sentence	722	430	476	443	10.7%	7.4%
VOP	203	123	138	100	12.2%	38.0%
Accused	1,710	1,612	2,061	1,660	27.9%	24.2%
Total	2,721	2,326	2,925	2,459	25.8%	19.0%
Releases						
Transfer Parole	22	23	21	2	-8.7%	950.0%
Parole	153	120	183	124	52.5%	47.6%
Trans Plac/Furlough	7	14	12	1	-14.3%	
HWH	166	157	227	161	44.6%	41.0%
TS	311	270	360	346	33.3%	4.0%
Special Parole	77	50	64	88	28.0%	-27.3%
End of Sentence	1,020	893	1,027	975	15.0%	5.3%
Total	1,756	1,738	1,894	1,697	9.0%	11.6%
Pre-trial Releases*						
Release to Bond	528	508	617	-	-3.8%	-
Did not return from Court	645	595	677	-	-7.8%	-

*Measured on incidents and not by individuals.

Parole

Paroles Granted During March 2009:

During March 2009, the Board conducted 23 full-panel hearings to consider 287 parole applicants; 262 were granted parole dates and 25 were denied. In addition, hearings were conducted for 121 cases involving violations. Of these 87 cases were re-paroled.

TABLE 4A – Monthly Parole Granting Rate

	Hearings	Granted	Rate
JAN	234	211	90%
FEB	282	237	84%
MAR	287	262	91%

Data Notes: Figures are based on actual data available at the time of this report. Subsequent reports may not agree.

Parole hearings are typically held six months prior to an offender's parole eligibility date. An offender may be released to parole on their first eligibility date or a later date. As a result, the time between parole being granted and the offender being released into the community may take longer than six months.

Transfer Parole Rates: In March, 188 cases were reviewed for transfer parole. Of these cases 44 were approved, 90 were denied, and 54 were continued.

TABLE 4B – Monthly Transfer Paroles Granted

	Reviewed	Granted	Denied	Continued	Rate
JAN	199	47	60	92	23.6%
FEB	153	30	77	46	19.6%
MAR	188	44	90	54	23.4%

Probation

Total number sentenced offenders placed on probation in February: 2,537 (See Chart 2).

TABLE 5 – Monthly CSSD Direct Sentenced & Probationer Community Placements

	Community Based	Out-Patient	Inpatient/ Resident	Total
DEC	1,031	742	29	1,802
JAN	1,046	843	35	1,924
FEB	939	839	18	1,796

Data Notes: March 2009 data for Community Placements was not available at the time of this report. Figures are based on data available at the time of this report. Subsequent reports of actual figures may not agree.

Pre-trial Diversion Supervision

Total number of offenders released to Pre-trial Diversion/Supervision in February: 2,494. This figure includes offenders who were released from DOC facilities.

TABLE 6 – Pre-trial Diversion/Supervision

JAN	2,598
FEB	2,494
MAR	3,067

CHART 3 – Snapshot Daily DOC Facility Population
April 1, 2009 to April 7, 2009

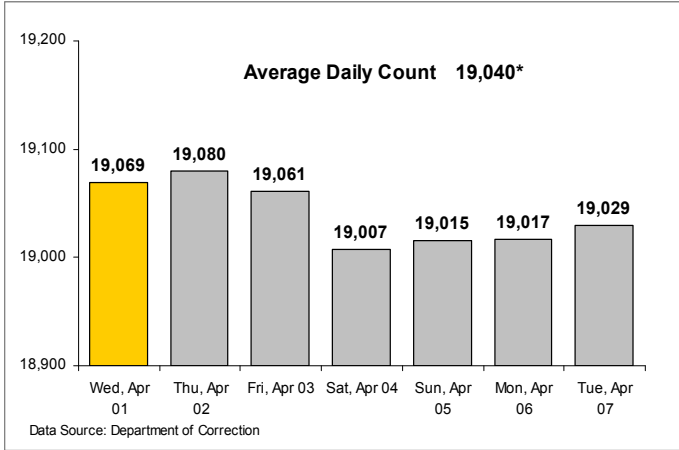


CHART 6 – Monthly DOC Admissions by Type
April 2008 to March 2009

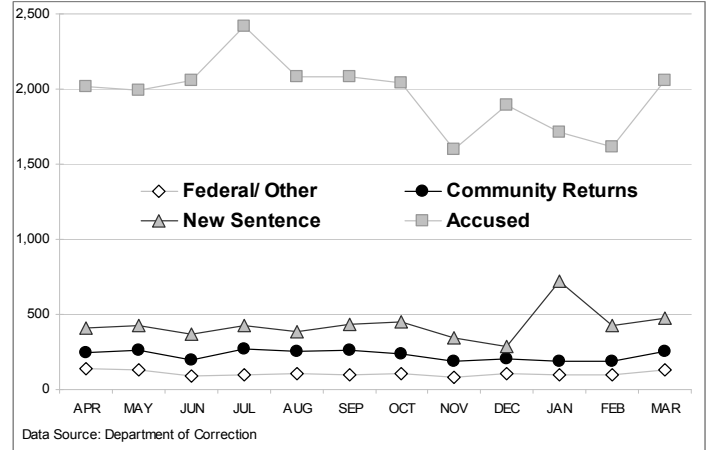


CHART 4 – Snapshot Monthly DOC Prison Population
January 2007 to April 2009 (by Calendar Year)

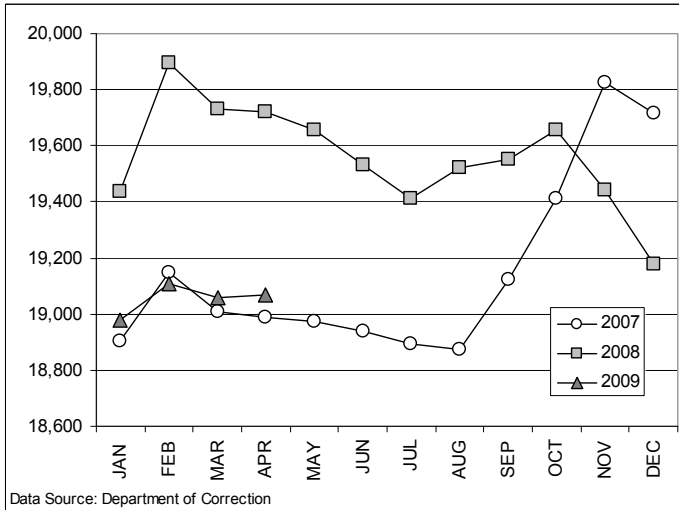


CHART 7 – Community Release Readmission Reasons
March 2009

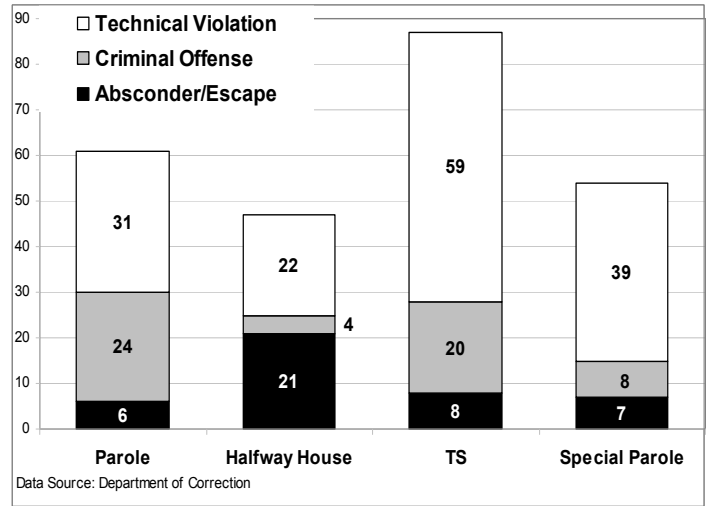


CHART 5 – Snapshot Prison Population, Percent Change
From Prior Month (March/April) 1990 to 2009

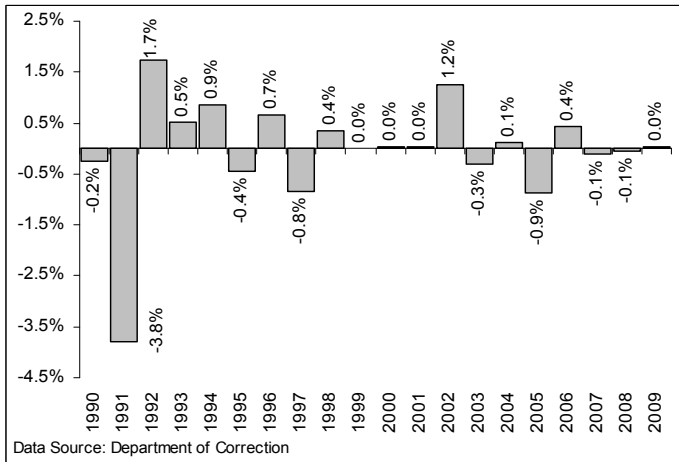


CHART 8 – Snapshot Monthly Parole, TS and Special Parole
August 2007 to April 2009

