

# Criminal Justice Policy & Planning Division Monthly Indicators Report



RESEARCH, ANALYSIS & EVALUATION — WWW.CT.GOV/OPM/CriminalJustice/Research

In response to our readership's request for a more concise report, the format of the *Monthly Indicators* has changed. We welcome all comments and feedback on this report. In the future we will be posting all historical data on our website.

- Between October 1, 2008 and November 1, 2008, the state's daily prison population declined by 216 inmates from 19,657 to 19,441. The November 1<sup>st</sup> population for 2008 was also lower than the November 1<sup>st</sup> 2007 figure. This is the first time that the prison population has fallen below 2007 levels (See Chart 4).

- The daily prison population fluctuates during the course of the week reflecting changes in typical inmate flow through the system on different days. During the first week in November 2008, the daily prison population fluctuated between 19,457 inmates and 19,381 inmates. The average daily population for the week was 19,424 (See Chart 3).

- In recent years, the prison population has generally peaked in late October reflecting a build up in the unsentenced/accused population that result from an increased level of arrests during the late summer and early fall. Last month's drop in the prison population was due to a slight decline in the unsentenced population, an increase in the number of inmates reaching the end of their sentences and a small increase in the number of offenders released into community programs (See Chart 6 and Chart 7).

- The number of offenders who were granted parole by full panel hearing fell slightly from 221 to 218 between September and October. Of the 135 cases reviewed for Transfer Parole; only 25 were granted (See Table 4B).

## Six Month Forecast of the Prison Population

Last month, OPM's Criminal Justice Policy & Planning Division produced two prison population projections. The first projection was based on historical trends and the use of an input-output model of the state's prison population. The second projection adjusted OPM's initial population projection to include a projected decrease in the prison population based on the ability of added staff at BOPP to reduce the existing backlog of inmates awaiting parole.

According to DOC population figures, the number of inmates exiting DOC facilities for parole did not change substantially during the month of October. One possible explanation for this is the amount of delay that exists between an offender being granted a parole date and the time it takes to actually leave prison.

CHART 1 – Prison Population Forecast, November 2008

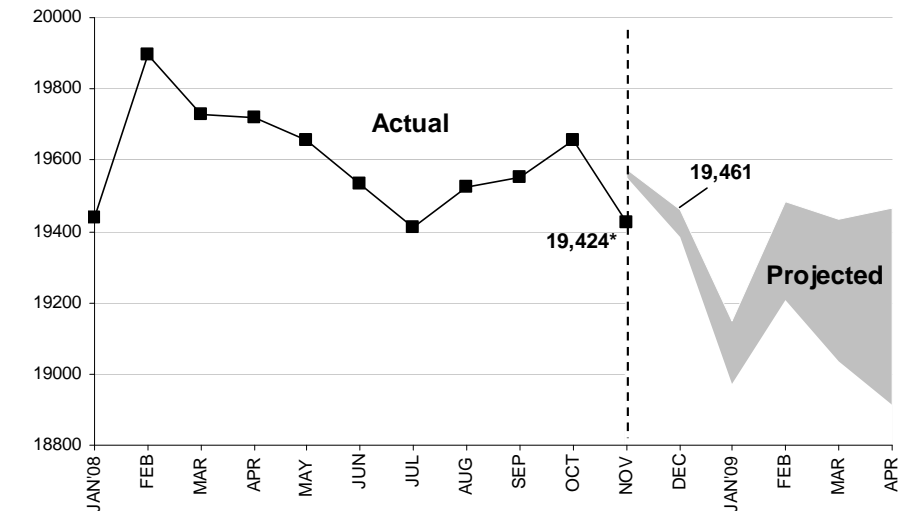


TABLE 1 – Prison Population Forecast

	2008 Actual (*Avg Daily)	6 Month Population Forecast	Potential Parole Releases	Forecast with Parole Releases	Difference Actual vs. Projected
AUG	19,524	-	-	-	
SEP	19,552	-	-	-	
OCT	19,657	-	-	-	
NOV	<b>19,424*</b>	19,575	25	19,550	-151
DEC	-	<b>19,461</b>	75	19,386	
JAN'09	-	19,148	175	18,973	
FEB	-	19,482	275	19,207	
MAR	-	19,434	400	19,034	
APR	-	19,465	550	18,915	

From this point forward, rather than adjusting our forecast each month to reflect the most recent actual prison population, we will prepare two six month forecasts based on system inputs/outputs and data provided by agency partners. Also, we are now calculating an average daily population count from the first 7 calendar days of the month to begin the forecast so as to take into account potentially significant day-of-the-week variations in admission and releases.

CHART 3 – Daily DOC Facility Population

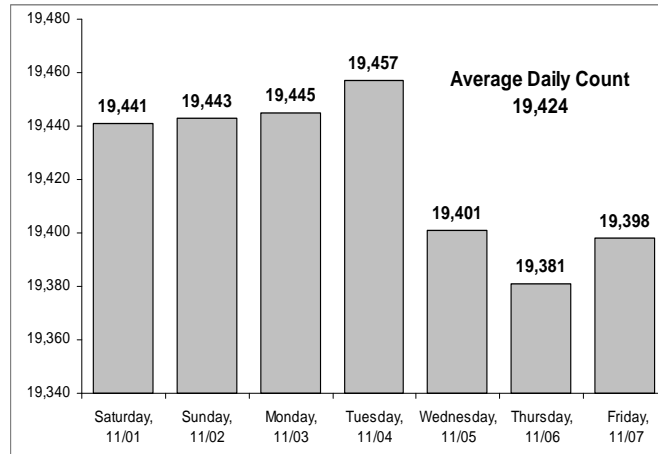


CHART 6 – Monthly Admission by Type

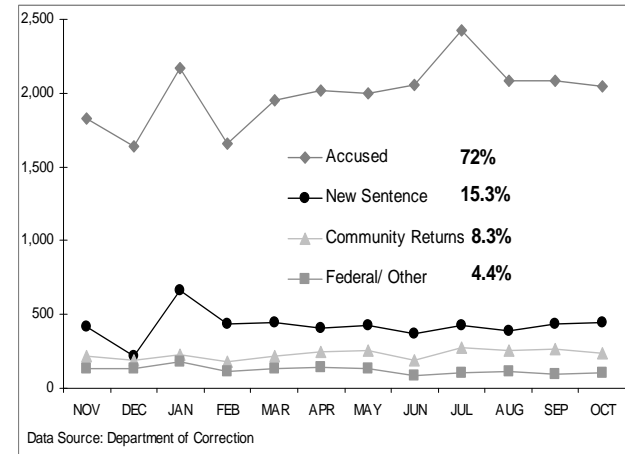


CHART 4 – Monthly DOC Facility Population

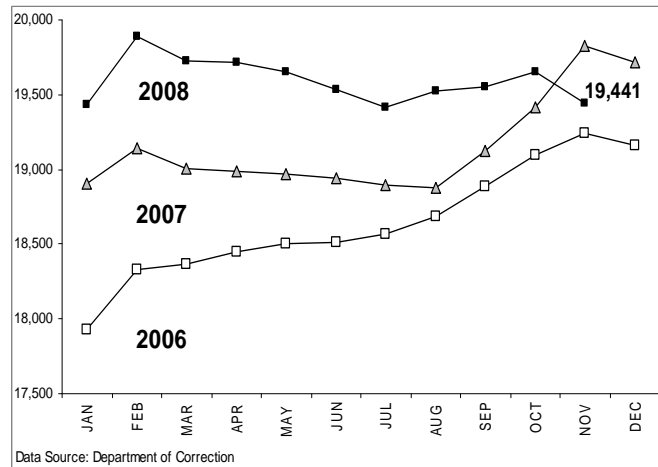


CHART 7 – Monthly DOC Release by Type

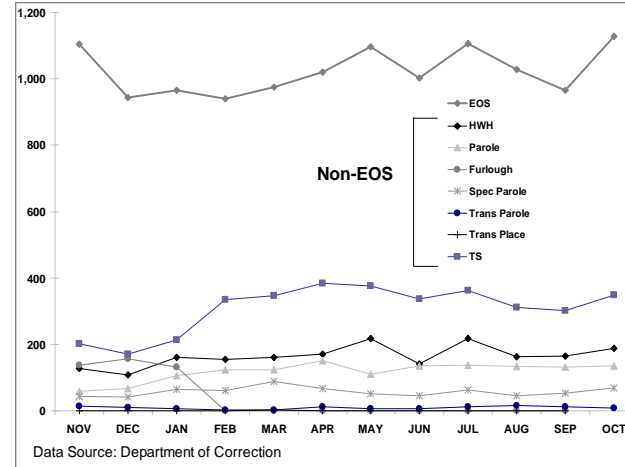


CHART 5 – Parole Granting Rates

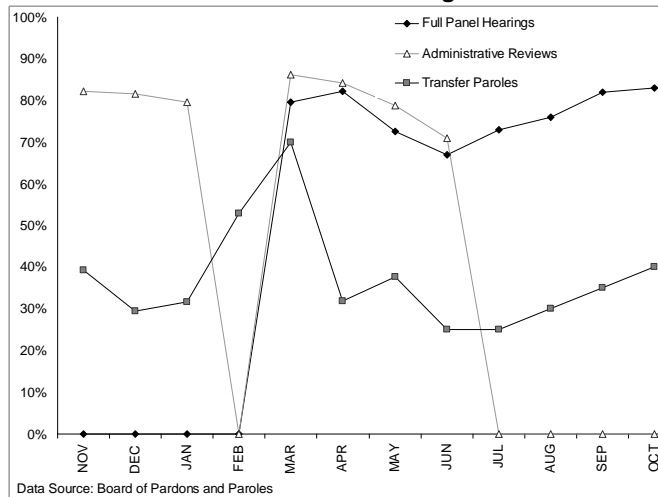
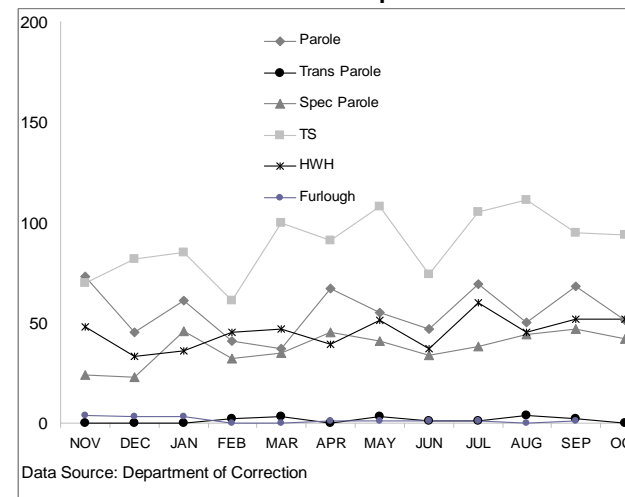
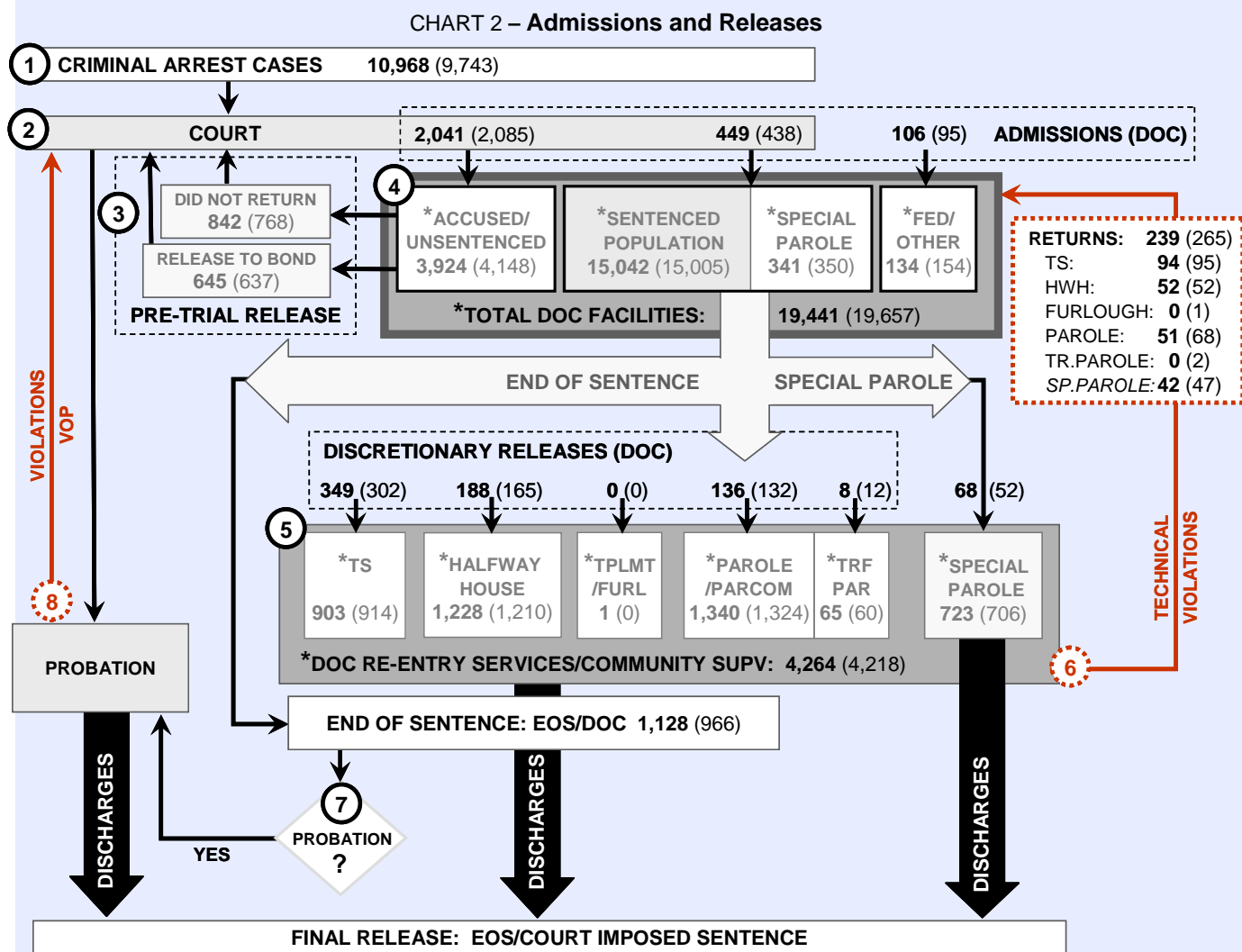


CHART 8 – DOC Comm. Supervised Re-Admits



# Connecticut Criminal Justice System Overview



Asterisks \* indicate single-day, snapshots of population counts as of November 1<sup>st</sup>. Numbers contained in parentheses ( ) are from the previous month. Sources: Arrest-Judicial/Court Operations; Court-Judicial/CSSD; Facility/Community Supervision-DOC

Unlike states that have county governments, the majority of agencies within Connecticut's criminal justice system are State agencies. The one exception is law enforcement, where there are over 90 local police departments and the Connecticut State Police.

- 1) Arrest:** An individual enters into the criminal justice system at the time of arrest.
- 2) Court:** During arraignment, judges review the charges filed against the accused and set a bail amount. Individuals who cannot meet the conditions of bail are placed in DOC facilities to await trial. If the defendant is convicted they may be sentenced to serve a period of probation, a term of incarceration or some other sanction.
- 3) Pre-Trial Release:** Some defendants who are incarcerated while awaiting the disposition of their cases may be eligible for placement into pre-trial diversionary programs or treatment programs. These programs feature a high degree of coordination and cooperation between DOC, CSSD and the Department of Mental Health and Addiction Services (DMHAS).
- 4) DOC Facilities:** Total facility population at DOC contains the unsentenced population, which is awaiting trial, the sentenced population, those on special parole, and those charged in federal cases or non-state cases.
- 5) Re-Entry Services:** Depending on several factors, an inmate may be eligible to complete a portion of his/her prison sentences under community supervision (i.e. halfway house, parole, transitional supervision). Non-violent inmates with sentences shorter than two years are eligible for transitional supervision after serving 50% of their sentences. Inmates serving sentences longer than two years may be eligible for parole.
- 6) Returns:** Offenders who violate the conditions of their community release may be returned to prison to serve out the remainder of their sentences.
- 7) End of Sentence:** At the end of their sentences some offenders are required to complete a period of post-release supervision. Split-sentence offenders enter probation where they are monitored by CSSD personnel. Offenders sentenced to special parole remain under DOC supervision.
- 8) Violation of Probation:** Individuals that violate the terms of their probation are re-arrested and sent back to court.

TABLE 2 – Snapshot of Month DOC Population Counts

DOC Facility	2008			2007	% Change	
	Sep 1st	Oct 1st	Nov 1st	Nov 1st	Monthly	Annual
<b>DOC Facility</b>						
Accused/Unsentenced	4,158	4,148	3,924	4065	-5.4%	-3.5%
Sentenced	14,881	15,005	15,042	15230	0.2%	-1.2%
Special Parole	346	350	341	360	-2.6%	-5.3%
Federal/Other	167	154	134	173	-13.0%	-22.5%
<b>Total</b>	<b>19,552</b>	<b>19,657</b>	<b>19,441</b>	<b>19,828</b>	<b>-1.1%</b>	<b>-2.0%</b>
<b>DOC Community</b>						
TS Total	936	914	903	898	-1.2%	0.6%
Halfway House Total	1,208	1,210	1,228	1063	1.5%	15.5%
Comm Release	925	933	944	884	1.2%	6.8%
TS	166	158	159	82	0.6%	93.9%
Parole	61	75	74	63	-1.3%	17.5%
Transfer Parole	1	1	1	0	0.0%	NA
Special Parole	51	43	50	34	16.3%	47.1%
Furlough Total	0	0	1	94	NA	-98.9%
Furlough	0	0	0	94	NA	-100.0%
Trans Placement	0	0	1	0	NA	NA
Parole Total	2,110	2,094	2,132	2122	1.8%	0.5%
Parole	1,182	1,166	1,178	1297	1.0%	-9.2%
Parcom @ CT	161	158	162	158	2.5%	2.5%
Transfer Parole	55	60	65	35	8.3%	85.7%
Special Parole	709	706	723	632	2.4%	14.4%
<b>Total</b>	<b>4,254</b>	<b>4,218</b>	<b>4,264</b>	<b>4,177</b>	<b>1.1%</b>	<b>2.1%</b>

TABLE 3 – Total DOC Admissions and Releases by Month

Admissions	2008			2007	% Change	
	Aug	Sep	Oct	Oct	Monthly	Annual
Accused	2,080	2,085	2,041	2,252	-2.1%	-9.4%
New Sentence	385	438	449	449	2.5%	0.0%
VOP	109	115	133	95	15.7%	40.0%
Federal/Other	109	95	106	162	11.6%	-34.6%
Returns	254	265	239	323	-9.8%	-26.0%
TS	111	95	94	94	-1.1%	0.0%
HWH	45	52	52	69	0.0%	-24.6%
Furlough	-	1	-	5	-100.0%	-100.0%
Parole	50	68	51	104	-25.0%	-51.0%
Transfer Parole	4	2	-	-	-100.0%	NA
Special Parole	44	47	42	51	-10.6%	-17.6%
<b>Total</b>	<b>2,828</b>	<b>2,883</b>	<b>2,835</b>	<b>3,186</b>	<b>-1.7%</b>	<b>-11.0%</b>
<b>Releases</b>						
End of Sentence	1,027	966	1,128	978	16.8%	15.3%
TS	312	302	349	184	15.6%	89.7%
HWH	162	165	188	120	13.9%	56.7%
Furlough	-	-	0	129	NA	-100.0%
Parole	133	132	136	25	3.0%	444.0%
Transfer Parole	15	12	8	2	-33.3%	300.0%
Special Parole	45	52	68	27	30.8%	151.9%
<b>Total</b>	<b>1,694</b>	<b>1,629</b>	<b>1,877</b>	<b>1,465</b>	<b>15.2%</b>	<b>28.1%</b>
<b>Pre-trial Releases</b>						
Release to Bond	677	637	645	-	1%	-
Did not return from Court	759	768	842	-	10%	-

See Chart 7 for Monthly DOC Release by Type

## Parole

**Paroles Granted During October 2008:**  
 During October 2008 there were 218 cases granted parole by full panel hearings of the Board. Additionally, there were 68 cases granted a re-parole by the Board.

TABLE 4A – Monthly Parole Granting Rate

	Full Panel Hearings		Admin Reviews	
	Granted	Rate	Granted	Rate
AUG	184	76%	0	-
SEP	221	82%	0	-
OCT	218	83%	0	-

**Transfer Parole Rates:** Out of the 218 cases above that were granted parole in October, 135 cases were reviewed for transfer parole. Of these cases 25 were approved, 74 were denied and 36 were given a new transfer parole date.

TABLE 4B – Monthly Transfer Paroles Granted

	Reviewed	Granted	Denied	Continued	Rate
AUG	82	21	28	33	25.6%
SEP	81	23	49	9	28.4%
OCT	135	25	74	36	18.5%

Public Act 08-1 now requires that no hearing to grant parole be held "...unless the chairperson of the board has made reasonable efforts to determine the existence of and obtain all information deemed pertinent to the panel's decision and has certified that all such pertinent information determined to exist has been obtained or is unavailable."

## Probation

**Total number of sentenced offenders placed on probation in September:** 1,922 offenders were placed on probation.

TABLE 5 – Monthly CSSD Direct Sentenced & Probationer Community Placements

	Community Based	Out-patient	Inpatient/Resident	Total
JUL	1,766	666	36	2,468
AUG	1,091	712	39	1,842
SEP	1,077	802	43	1,922

Data reflects counts from July 1, 2008 to September 30, 2008. These numbers are merely estimates based on data available at the time of this report. Subsequent reports of actual figures may not agree.

## Pre-trial Diversion Supervision

**Total number of offenders released to Pre-trial Diversion/Supervision:** 2,855 inmates were released to pre-trial diversion in October.

	Aug	Sep	Oct
Pre-trial Diversion/Supervision	2,615	2,719	2,855