



# Monthly Indicators

Criminal Justice Policy and Planning Division (CJPPD)

WWW.CT.GOV/OPM/CriminalJustice/Research

October 2008

In response to our readership's request for a more concise report, the format of the *Monthly Indicators* has changed. We welcome all comments and feedback on this report. In the future we will be posting all historical data on our website.

## Six Month Forecast of the Prison Population

As we enter 2009, it is estimated that the prison population should begin to approach pre-July 2007 levels.

Over the next six months, the prison population in Connecticut is expected to experience a significant, though temporary, decline in December and January. When the population rebounds in February 2009, it is not expected to return to November 2008 levels.

Temporary staff assigned to the Board of Pardons and Parole (BOPP) are processing cases for inmates whose parole hearings have been backlogged over the past year. As this backlog is reduced and offenders released to parole increases, it is anticipated that the prison population will begin to decrease. Given these facts, it is anticipated that the prison population will fall below October 2007 levels sometime during the month. As the backlog in parole cases is eliminated, declines in the prison population could exceed current estimates by early 2009 (See CHART 1).

- On October 1, 2008, the total prison population in Connecticut stood at **19,657**, a 0.5% increase over the September 1, 2008 figure (See CHART 1). Because of fluctuations during the week, we will begin to report inmate populations based on the average daily count during the first week of each month (See CHART 3). The average daily count for the first week in October 2008 was **19,596**.

- Throughout 2008, monthly prison populations have been significantly higher than they were in previous years. In the aftermath of the July 2007 Cheshire home invasion, the state's prison population rose by 950 inmates, a 5% increase, during a three month period (See CHART 4). Although a small seasonal component also contributed to these increases, rapid growth in the prison population was largely driven by dramatic reductions in the release of eligible inmates to community programs and steep increases in offenders returning for technical violations.

- Although the prison population has grown in each of the last three months, these increases are consistent with seasonal patterns for late summer and early fall. This recent growth was preceded by five straight months of steady decline.

- During September, 966 inmates completed their prison sentences and were released. An additional 611 inmates were released from prison to parole, transfer parole, transitional supervision or to half-way houses (see TABLE 3).

- Despite certain operational issues, BOPP has reported significant increases in the number of parole hearings that were held, and the number of paroles granted over the last three months.

CHART 1 – Prison Population Forecast, October 2008

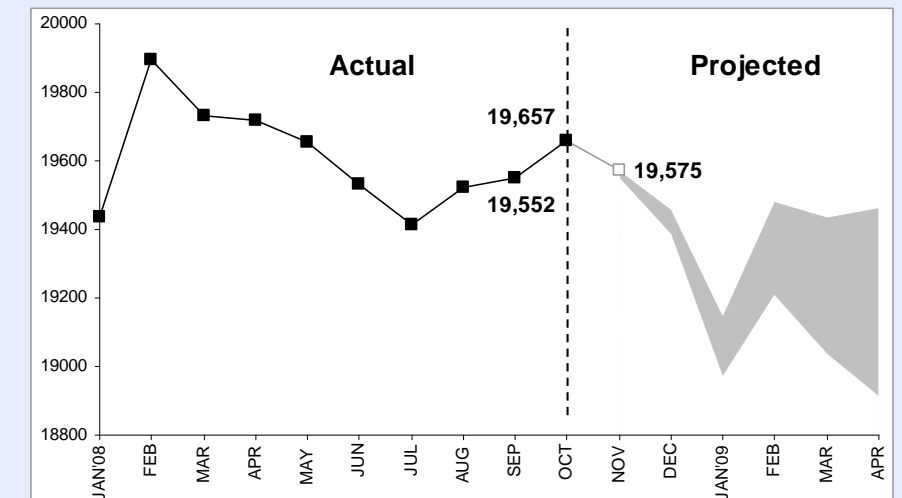


TABLE 1 – Prison Population Forecast

	2008 Actual	Current Estimate	Cum Est Parole Releases	Estimate with Parole Releases
AUG	19,524	*	*	*
SEP	19,552	*	*	*
OCT	19,657	*	*	*
NOV	*	19,575	25	19,550
DEC	*	19,461	75	19,386
JAN'09	*	19,148	175	18,973
FEB	*	19,482	275	19,207
MAR	*	19,434	400	19,034
APR	*	19,465	550	18,915

CHART 3 – Daily DOC Facility Population

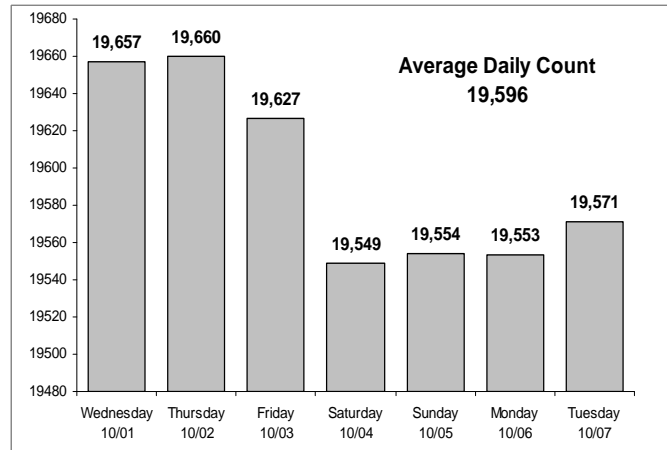


CHART 6 – Monthly Admission by Type

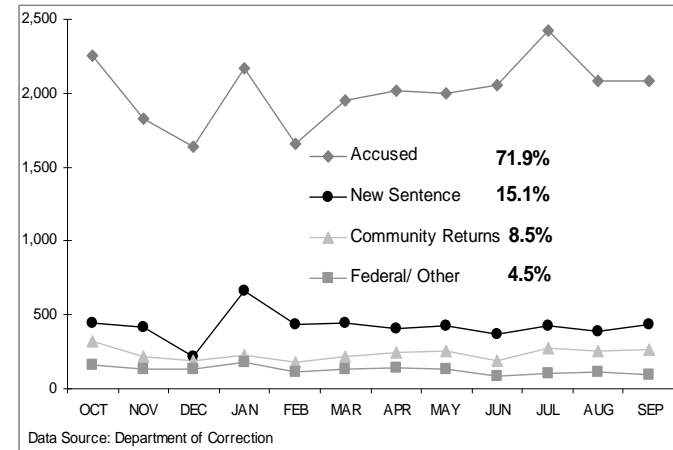


CHART 4 – Monthly DOC Facility Population

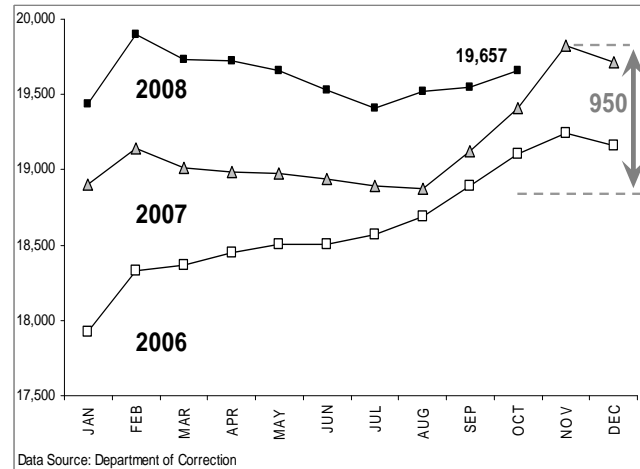


CHART 7 – Monthly DOC Release by Type

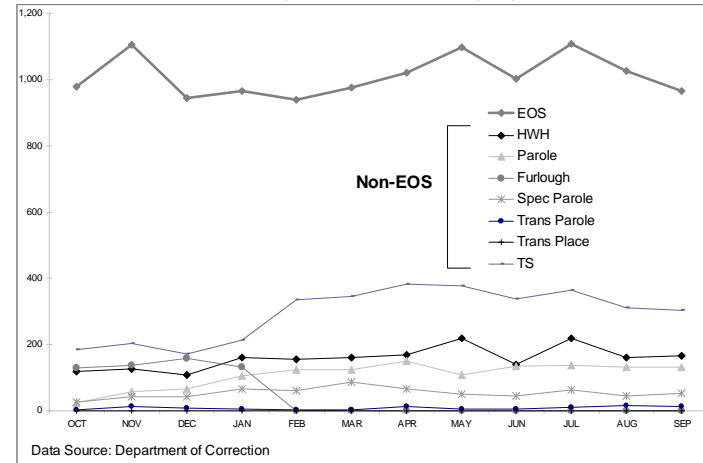


CHART 5 – Parole Granting Rates

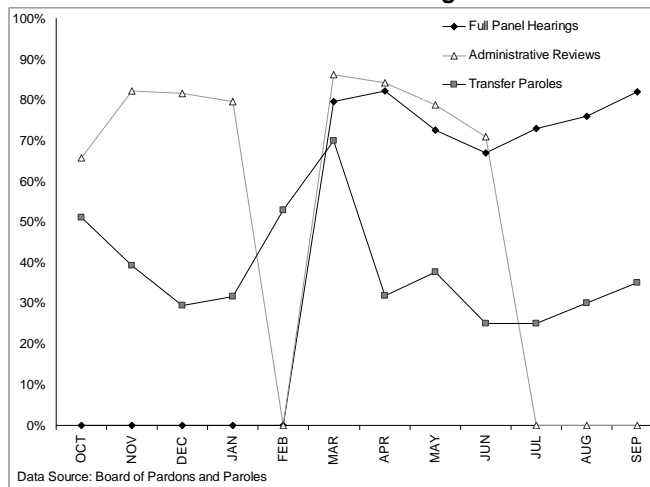
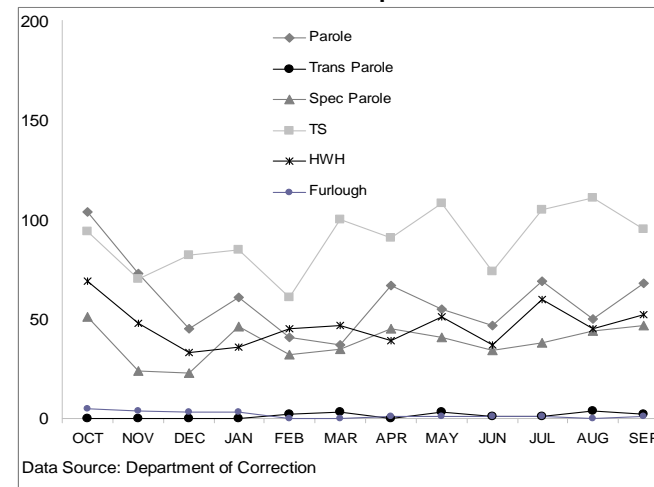
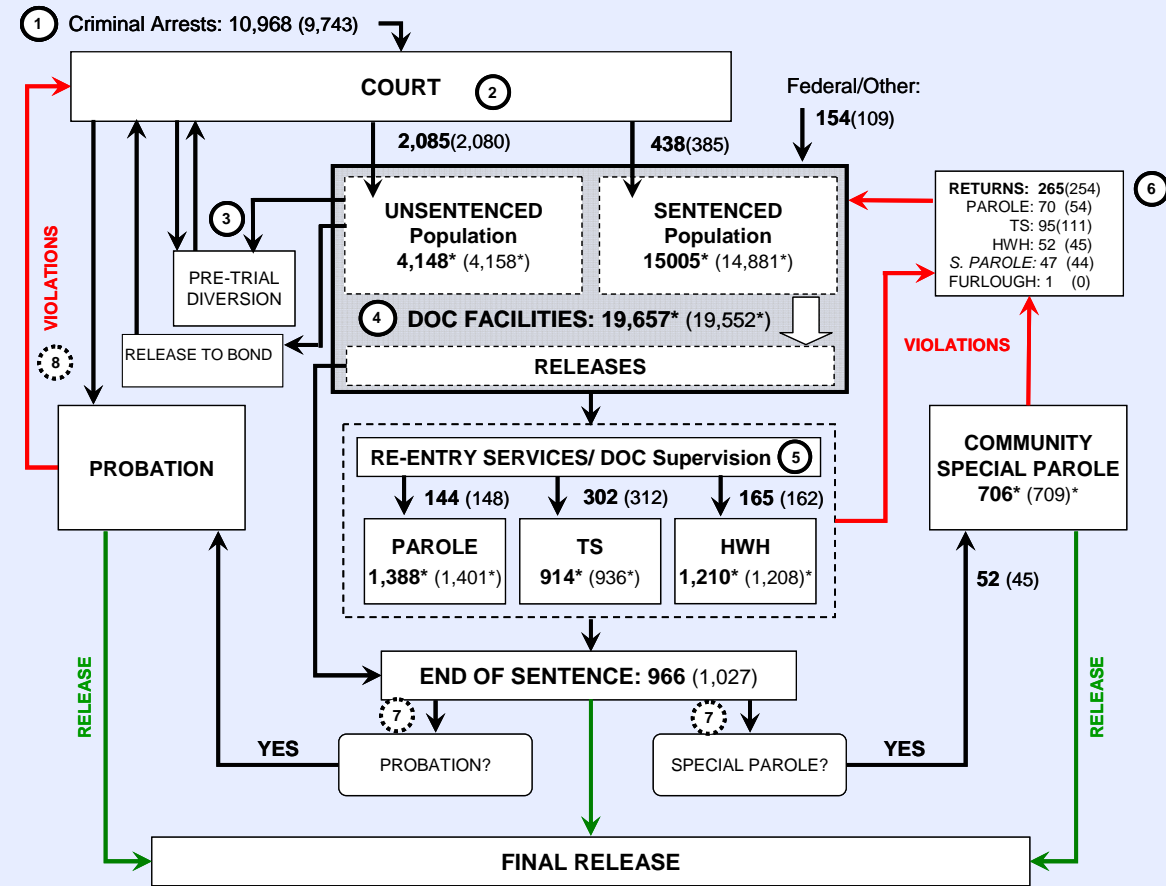


CHART 8 – DOC Comm. Supervised Re-Admits



# Connecticut Criminal Justice System Overview

## CHART 2 – Admissions and Releases



Asterisks \* indicate single-day, snapshots of population counts as of October 1<sup>st</sup>.  
 Numbers contained in parentheses ( ) are from the previous month  
 Figures for parole include parole and transfer parole  
 Releases to parole, parole snapshot counts and returns from parole include transfer parole numbers but NOT special parole counts  
 Sources: Arrest-Judicial/Court Operations; Court-Judicial/CSSD; Facility/Community Supervision-DOC

Unlike states that have county governments, the majority of agencies within Connecticut's criminal justice system are State agencies. The one exception is law enforcement, where there are over 90 local police departments and the Connecticut State Police.

- 1) Arrest:** An individual enters into the criminal justice system at the time of arrest.
- 2) Court:** During arraignment, judges review the charges filed against the accused and set a bail amount. Individuals who cannot meet the conditions of bail are placed in DOC facilities to await trial. If the defendant is convicted they may be sentenced to serve a period of probation, a term of incarceration or some other sanction.
- 3) Pre-Trial Diversion:** Some defendants who are incarcerated while awaiting the disposition of their cases may be eligible for placement into pre-trial diversionary programs or treatment programs. These programs feature a high degree of coordination and cooperation between DOC, CSSD and the Department of Mental Health and Addiction Services (DMHAS).
- 4) DOC Facilities:** Total facility population at DOC contains the unsentenced population, which is awaiting trial, the sentenced population, those on special parole, and those charged in federal cases or non-state cases.
- 5) Re-Entry Services:** Depending on several factors, an inmate may be eligible to complete a portion of his/her prison sentences under community supervision (i.e. halfway house, parole, transitional supervision). Non-violent inmates with sentences shorter than two years are eligible for transitional supervision after serving 50% of their sentences. Inmates serving sentences longer than two years may be eligible for parole.
- 6) Returns:** Offenders who violate the conditions of their community release may be returned to prison to serve out the remainder of their sentences.
- 7) End of Sentence:** At the end of their sentences some offenders are required to complete a period of post-release supervision. Split-sentence offenders enter probation where they are monitored by CSSD personnel. Offenders sentenced to special parole remain under DOC supervision.
- 8) Violation of Probation:** Individuals that violate the terms of their probation are re-arrested and sent back to court.

## TABLE 2 – 1<sup>st</sup> of Month DOC Population Counts

Snapshot	2008			Oct'07	% Change	
	Aug	Sep	Oct'08		Monthly	Annual
<b>Facility</b>						
Unsentenced	4,108	4,158	4,148	3959	-0.2%	4.8%
Sentenced	14,933	14,881	15,005	14922	0.8%	0.6%
Federal/Other	147	167	154	225	-7.8%	-31.6%
Special Parole	336	346	350	308	1.2%	13.6%
<b>Total</b>	<b>19,524</b>	<b>19,552</b>	<b>19,657</b>	<b>19,414</b>	<b>0.5%</b>	<b>1.3%</b>
<b>Community</b>						
TS Total	985	936	914	965	-2.4%	-5.3%
Furlough Total	0	0	0	92	0.0%	0.0%
Furlough	0	0	0	0	0.0%	0.0%
Trans Place	0	0	0	0	0.0%	0.0%
HWH Total	1215	1208	1210	1033	0.2%	17.1%
CR	913	925	933	861	0.9%	8.4%
TS	177	166	158	66	-4.8%	139.4%
Parole	70	61	75	74	23.0%	1.4%
Transfer Parole	2	1	1	0	0.0%	0%
Special Parole	51	51	43	32	-15.7%	34.4%
Parole Total	2094	2110	2094	2321	-0.8%	-9.8%
Parole	1170	1182	1166	1439	-1.4%	-19.0%
Parcom @ CT	158	161	158	167	-1.9%	-5.4%
Transfer Parole	51	55	60	62	9.1%	-3.2%
Special Parole	713	709	706	651	-0.4%	8.4%
<b>Total</b>	<b>4,294</b>	<b>4,254</b>	<b>4,218</b>	<b>4,319</b>	<b>-0.8%</b>	<b>-2.3%</b>

## TABLE 3 – Monthly DOC Admissions and Releases

Admissions	2008			Oct'07	% Change	
	Aug	Sep	Oct'08		Monthly	Annual
Accused	2,426	2,080	2,085	1,919	0.2%	8.7%
New Sentence	413	385	438	367	13.8%	19.3%
VOP	100	109	115	71	5.5%	62.0%
Federal/Other	161	109	95	157	-12.8%	-39.5%
Returns	364	254	265	395	4.3%	-32.9%
Parole	126	50	68	130	36.0%	-47.7%
Transfer Parole	-	4	2	1	-50.0%	100.0%
TS	128	111	95	126	-14.4%	-24.6%
HWH	45	45	52	69	15.6%	-24.6%
Furlough	9	-	1	7	0.0%	-85.7%
Special Parole	56	44	47	62	6.8%	-24.2%
<b>Total</b>	<b>3,364</b>	<b>2,828</b>	<b>2,883</b>	<b>2,838</b>	<b>1.9%</b>	<b>1.6%</b>
<b>Releases</b>						
End of Sentence	1,083	1,027	966	907	-5.9%	6.5%
Special Parole	45	45	52	56	15.6%	-7.1%
Furlough	208	-	-	146	0.0%	-100.0%
Parole	165	133	132	103	-0.8%	28.2%
Transfer Parole	12	15	12	1	-20.0%	1100.0%
TS	227	312	302	167	-3.2%	80.8%
HWH	174	162	165	158	1.9%	4.4%
<b>Total</b>	<b>1,914</b>	<b>1,694</b>	<b>1,629</b>	<b>1,538</b>	<b>-3.8%</b>	<b>5.9%</b>

## Parole

**Paroles Granted During September 2008:**  
 During September 2008 there were **221 total parole cases granted** by full panel hearings and transfer parole reviews.

## TABLE 4A – Monthly Parole Granting Rate

	Full Panel Hearings	Admin Reviews
	Granted Rate	Granted Rate
JUL	144 73%	0 ""
AUG	184 76%	0 ""
SEP	221 82%	0 ***

**Transfer Parole Rates:** Out of the 221 cases granted parole, 81 cases were reviewed for transfer parole during September 2008. 23 cases were approved for transfer parole, 49 were denied transfer parole and 9 cases were given a new transfer parole date.

## TABLE 4B – Monthly Transfer Paroles Granted

	Reviewed	Granted	Denied	Continued	Rate
JUL	90	27	38	25	30.0%
AUG	82	21	28	33	25.6%
SEP	81	23	49	9	28.4%

*Public Act 08-1 now requires that no hearing to grant parole be held "...unless the chairperson of the board has made reasonable efforts to determine the existence of and obtain all information deemed pertinent to the panel's decision and has certified that all such pertinent information determined to exist has been obtained or is unavailable."*

## Probation

**Total number of sentenced offenders placed on probation in September:** 1,842 offenders were placed on probation.

## TABLE 5 – Monthly CSSD Direct Sentenced & Probationer Community Placements

	Community Based	Out-patient	Inpatient/Resident	Total
JUL	1,175	692	30	1,897
AUG	1,766	666	36	2,468
SEP	1,091	712	39	1,842

*Data reflects counts from July 1, 2008 to September 30, 2008. These numbers are merely estimates based on data available at the time of this report. Subsequent reports of actual figures may not agree.*