



Connecticut Department of Public Health Weekly Influenza Update - Final Report for 2010-2011 Flu Season

The following information describes influenza activity in Connecticut during the 2010-2011 expanded influenza season (August 29, 2010-June 4, 2011).

Overall, influenza activity in Connecticut during the 2010-2011 season was considerably lower than flu activity observed during the 2009 H1N1 pandemic (see Pandemic Influenza Summary).

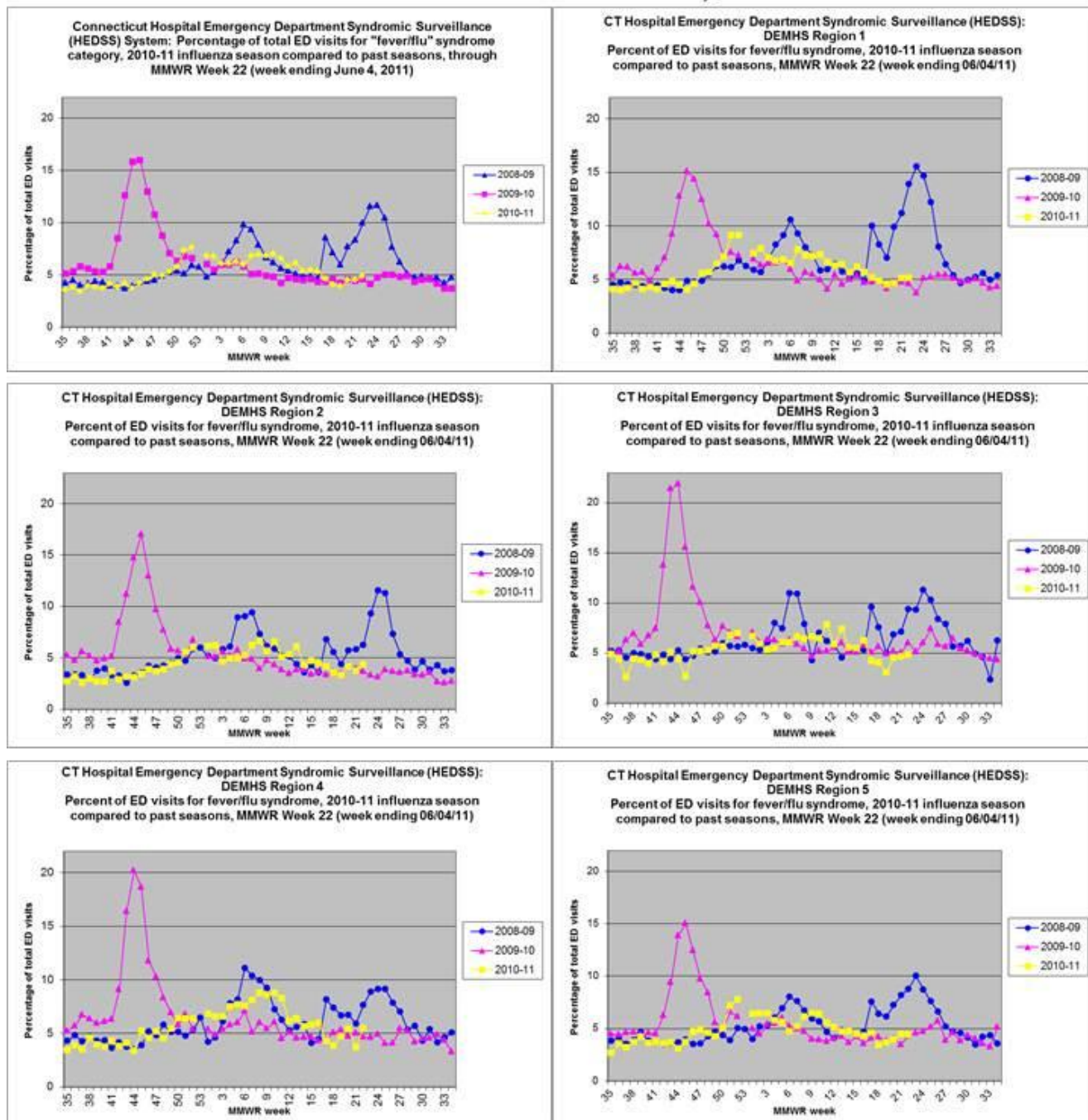
In Connecticut, the Department of Public Health utilized multiple surveillance systems to monitor circulating flu viruses. Surveillance data are updated weekly during the flu season.

Final surveillance findings for the 2010-2011 flu season include:

- The percentage of total emergency department visits attributed to the “fever/flu” syndrome category increased slightly in some regions during the last three weeks of the season but remained below 5% statewide after decreasing during the prior four weeks (Figure 1).
- The percentage of outpatient visits with influenza-like illness increased slightly during the week before surveillance reporting ended, but remained less than 0.2% of all patient visits after decreasing during the prior four weeks (Figure 2).
- The number of weekly hospital pneumonia admissions increased during the last two weeks of the surveillance period and represented 5% of all admissions after decreasing during the prior four weeks (Figure 3).
- A total of 912 persons hospitalized with influenza-associated illness were reported and included: 422 with Type A (H3N2), 156 with Type A (H1N1) novel, 244 with Type A unspecified, and 90 with Type B (Figure 4).
- There were 20 fatal influenza-associated infections that included 9 patients with Type A (H3N2), 5 with Type A (H1N1) novel, 4 with Type A unspecified, and 2 with Type B; the median age of patients with fatal infections was 82 years.
- A total of 4,744 positive influenza test reports were received and included: 3,744 Type A, 663 Type B and 337 of unknown type. Of the 1,813 Type A viruses with known subtype, 69% were A (H3N2) and 31% were A (H1N1) novel (Figure 5). The percentage of circulating Type B influenza increased over the course of the last few months.

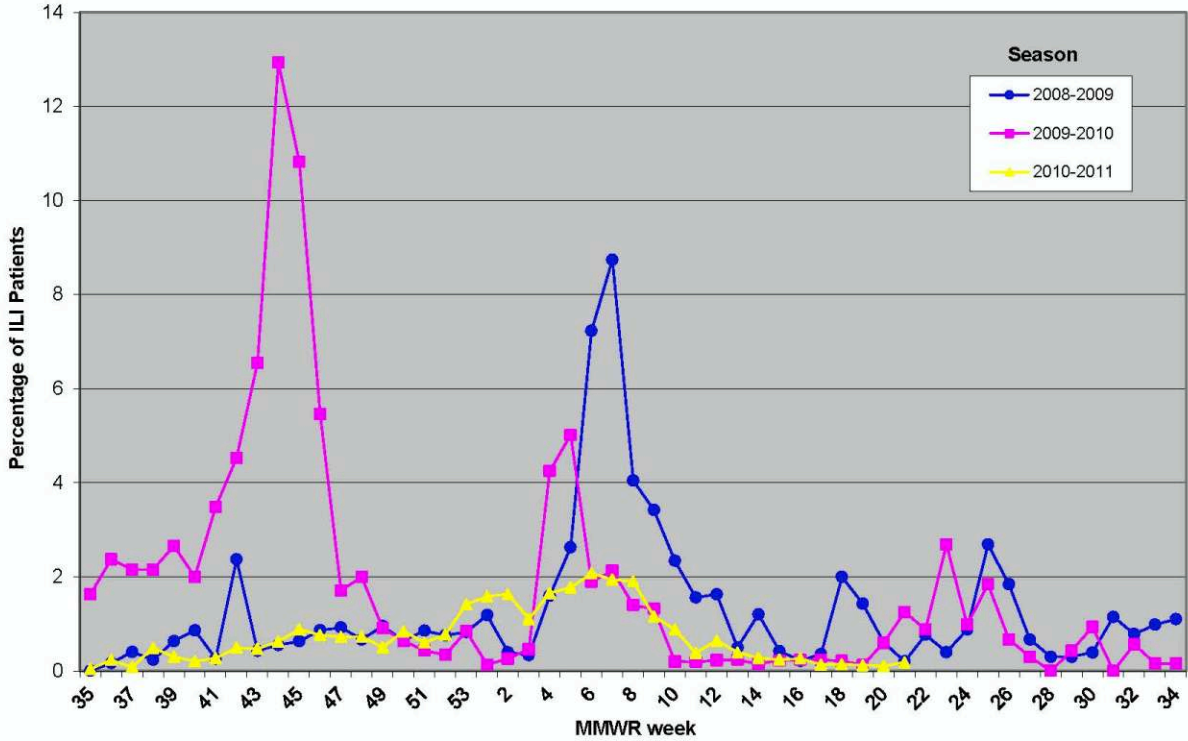
The **Hospital Emergency Department Syndromic Surveillance (HEDSS) System** receives daily electronic reports on ED visits from more than half of Connecticut's acute care hospitals. Data include a listing of total patient visits with information on their chief complaint, including fever/flu.

Figure 1:
CT Hospital Emergency Department Syndromic Surveillance (HEDSS):
Percent of ED visits for fever/flu syndrome
compared to past seasons
MMWR Week 22 (week ending 06/04/2011)



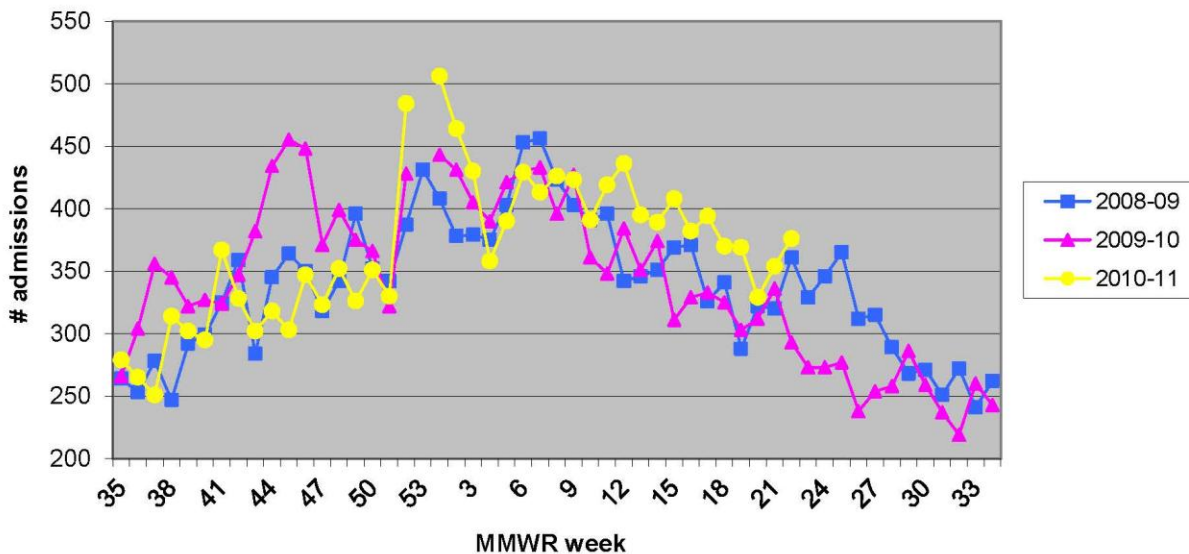
Sentinel Provider Surveillance System: Reporting of influenza-like illness (ILI) is conducted through a statewide network of volunteer outpatient providers known as ILINet. The proportion of patients exhibiting ILI is reported to the DPH on a weekly basis. ILI is defined as a cough or sore throat in the absence of a known cause, and the presence of a fever > 100° F.

Figure 2. Outpatient Influenza-Like Illness Surveillance Network (ILINet), Percentage of Patients with Influenza-Like Illness (ILI), through MMWR Week 22, (week ending June 4, 2011), Connecticut, 2008-2011



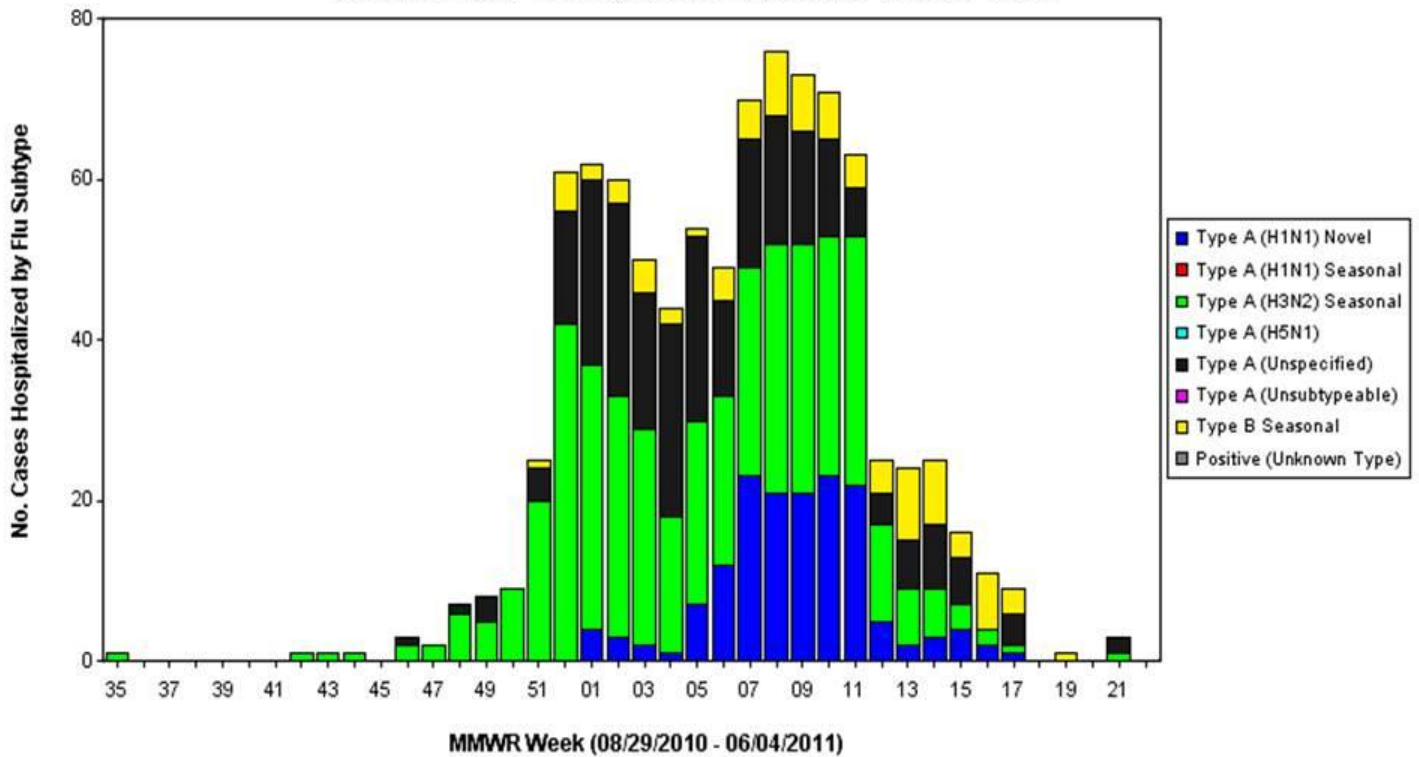
The **Hospital Admissions Syndromic Surveillance (HASS) System**, receives daily electronic reports from all 32 acute care hospitals in Connecticut. Information on unscheduled admissions, including those for pneumonia that may be associated with influenza infections, is submitted.

Figure 3: Connecticut Hospital Admissions Syndromic Surveillance (HASS) System, Statewide Pneumonia Admissions; 2008-09, 2009-10 & 2010-11



Influenza-associated Hospitalizations: Influenza-associated hospitalizations are reportable events in Connecticut. Data collected through this system describe the more serious illnesses associate with influenza infections.

Figure 4. Hospitalized Patients (n =912) with Positive Laboratory Tests by Influenza Subtype and Week, Connecticut (as of 6/7/2011)



2010-2011 Season Influenza by City and County, Connecticut

(August 29, 2010 - June 4, 2011)

Influenza Type and Subtype:	Type A (H1N1) Novel	Type A (H1N1) Seasonal	Type A (H3N2) Seasonal	Type A (H5N1)	Type A (Unspecified)	Type A (Unsubtypeable)	Type B Seasonal	Positive (Unknown Type)	Total
By City:									
Andover	0	0	0	0	0	0	0	0	0
Ansonia	6	0	12	0	6	0	4	4	32
Ashford	0	0	0	0	4	0	0	0	4
Avon	0	0	5	0	4	0	3	0	12
Barkhamsted	0	0	0	0	1	0	0	0	1
Beacon Falls	2	0	2	0	0	0	0	1	5
Berlin	1	0	0	0	6	0	2	0	9
Bethany	0	0	1	0	0	0	0	0	1
Bethel	1	0	1	0	27	0	1	0	30
Bethlehem	1	0	1	0	1	0	0	0	3
Bloomfield	3	0	11	0	5	0	5	0	24
Bolton	0	0	2	0	1	0	0	0	3
Bozrah	0	0	0	0	3	0	0	0	3
Branford	5	0	12	0	12	0	5	0	34
Bridgeport	19	0	51	0	59	0	18	30	177
Bridgewater	0	0	0	0	0	0	0	0	0
Bristol	4	0	6	0	88	0	18	0	116
Brookfield	0	0	2	0	7	0	2	0	11
Brooklyn	2	0	6	0	3	0	2	0	13
Burlington	0	0	1	0	2	0	1	0	4
Canaan	0	0	0	0	0	0	0	0	0
Canterbury	2	0	2	0	2	0	0	0	6
Canton	0	0	3	0	0	0	0	0	3
Chaplin	0	0	0	0	2	0	0	0	2
Cheshire	2	0	11	0	7	0	2	0	22
Chester	0	0	0	0	4	0	0	0	4
Clinton	0	0	4	0	16	0	1	1	22
Colchester	1	0	1	0	5	0	4	0	11
Colebrook	0	0	0	0	1	0	0	0	1
Columbia	1	0	0	0	6	0	2	0	9
Cornwall	1	0	0	0	0	0	0	0	1
Coventry	0	0	3	0	3	0	1	0	7
Cromwell	0	0	5	0	15	0	2	0	22
Danbury	2	0	4	0	83	0	28	0	117
Darien	2	0	7	0	3	0	3	0	15
Deep River	0	0	1	0	3	0	1	0	5
Derby	7	0	12	0	6	0	6	0	31
Durham	0	0	0	0	4	0	1	0	5
East Granby	0	0	0	0	0	0	0	0	0
East Haddam	0	0	1	0	6	0	1	0	8
East Hampton	0	0	0	0	13	0	2	0	15
East Hartford	9	0	29	0	13	0	8	0	59
East Haven	8	0	14	0	15	0	12	0	49
East Lyme	2	0	6	0	4	0	0	0	12
East Windsor	0	0	3	0	0	0	0	0	3

Eastford	0	0	0	0	0	0	0	0	0
Easton	1	0	3	0	3	0	1	9	17
Ellington	1	0	2	0	2	0	1	2	8
Enfield	2	0	15	0	5	0	0	1	23
Essex	1	0	1	0	7	0	1	0	10
Fairfield	13	0	25	0	61	0	14	103	216
Farmington	2	0	2	0	9	0	1	0	14
Franklin	0	0	0	0	3	0	0	0	3
Glastonbury	3	0	6	0	11	0	1	0	21
Goshen	0	0	0	0	1	0	0	0	1
Granby	4	0	0	0	0	0	0	0	4
Greenwich	24	0	67	0	27	0	15	0	133
Griswold	1	0	1	0	4	0	0	0	6
Groton	8	0	21	0	6	0	5	0	40
Guilford	1	0	5	0	10	0	3	0	19
Haddam	0	0	1	0	6	0	2	0	9
Hamden	10	0	33	0	19	0	12	0	74
Hampton	0	0	1	0	0	0	1	0	2
Hartford	49	0	77	0	52	0	30	0	208
Hartland	0	0	0	0	0	0	0	0	0
Harwinton	0	0	1	0	1	0	0	0	2
Hebron	0	0	2	0	6	0	5	0	13
Kent	0	0	0	0	2	0	0	0	2
Killingly	7	0	16	0	5	0	3	0	31
Killingworth	1	0	0	0	2	0	6	0	9
Lebanon	0	0	0	0	1	0	1	0	2
Ledyard	1	0	6	0	1	0	0	0	8
Lisbon	0	0	0	0	0	0	0	0	0
Litchfield	0	0	0	0	1	0	1	0	2
Lyme	0	0	0	0	2	0	1	0	3
Madison	1	0	8	0	17	0	2	0	28
Manchester	12	0	23	0	17	0	15	0	67
Mansfield	0	0	2	0	37	0	2	0	41
Marlborough	0	0	0	0	1	0	1	0	2
Meriden	11	0	25	0	31	0	27	0	94
Middlebury	1	0	1	0	4	0	1	0	7
Middlefield	1	0	1	0	2	0	0	0	4
Middletown	9	0	5	0	63	0	10	0	87
Milford	6	0	15	0	45	0	14	9	89
Monroe	1	0	4	0	6	0	1	28	40
Montville	1	0	3	0	1	0	1	0	6
Morris	0	0	0	0	0	0	0	0	0
Naugatuck	6	0	11	0	6	0	5	1	29
New Britain	5	0	7	0	39	0	13	0	64
New Canaan	3	0	2	0	14	0	5	0	24
New Fairfield	1	0	0	0	6	0	3	0	10
New Hartford	0	0	1	0	0	0	1	0	2
New Haven	63	0	88	0	42	1	45	1	240
New London	12	0	17	0	3	0	2	0	34
New Milford	0	0	0	0	4	0	1	0	5
Newington	3	0	8	0	7	0	2	0	20
Newtown	0	0	1	0	13	0	5	5	24

Norfolk	0	0	0	0	0	0	0	0	0
North Branford	3	0	3	0	4	0	2	0	12
North Canaan	0	0	0	0	2	0	0	0	2
North Haven	1	0	8	0	13	0	6	0	28
North Stonington	1	0	2	0	0	0	1	0	4
Norwalk	4	0	6	0	155	0	28	4	197
Norwich	12	0	12	0	21	0	7	0	52
Old Lyme	2	0	1	0	7	0	4	0	14
Old Saybrook	1	0	1	0	13	0	5	0	20
Orange	1	0	5	0	10	0	4	0	20
Oxford	2	0	2	0	1	0	0	1	6
Plainfield	2	0	9	0	5	0	0	0	16
Plainville	0	0	2	0	2	0	1	0	5
Plymouth	1	0	2	0	13	0	2	0	18
Pomfret	0	0	2	0	1	0	1	0	4
Portland	0	0	0	0	7	0	1	0	8
Preston	3	0	0	0	1	0	1	0	5
Prospect	2	0	0	0	1	0	0	2	5
Putnam	8	0	13	0	9	0	3	0	33
Redding	0	0	1	0	4	0	0	0	5
Ridgefield	1	0	0	0	38	0	4	0	43
Rocky Hill	1	0	8	0	9	0	2	0	20
Roxbury	0	0	0	0	0	0	0	0	0
Salem	0	0	0	0	0	0	0	0	0
Salisbury	0	0	0	0	3	0	1	0	4
Scotland	0	0	0	0	0	0	0	0	0
Seymour	5	0	10	0	4	0	1	7	27
Sharon	0	0	0	0	1	0	0	0	1
Shelton	7	0	17	0	17	0	2	42	85
Sherman	0	0	0	0	2	0	0	0	2
Simsbury	0	0	6	0	3	0	0	0	9
Somers	0	0	1	0	0	0	2	0	3
South Windsor	4	0	7	0	2	0	2	0	15
Southbury	1	0	3	0	11	0	5	1	21
Southington	4	0	5	0	29	0	3	0	41
Sprague	0	0	1	0	2	0	0	0	3
Stafford	1	0	0	0	2	0	0	2	5
Stamford	37	0	107	0	88	0	50	0	282
Sterling	0	0	0	0	0	0	0	0	0
Stonington	3	0	8	0	2	0	1	0	14
Stratford	5	0	18	0	23	0	3	29	78
Suffield	2	0	2	0	1	0	0	0	5
Thomaston	0	0	2	0	5	0	1	0	8
Thompson	8	0	3	0	1	0	2	0	14
Tolland	1	0	1	0	1	0	1	1	5
Torrington	1	0	1	0	14	0	2	0	18
Trumbull	10	0	23	0	17	0	4	39	93
Union	0	0	0	0	0	0	0	0	0
Vernon	6	0	10	0	2	0	3	0	21
Voluntown	1	0	1	0	1	0	1	0	4
Wallingford	9	0	24	0	36	0	3	0	72

Warren	0	0	0	0	0	0	0	0	0
Washington	0	0	0	0	1	0	0	0	1
Waterbury	9	0	61	0	92	0	27	0	189
Waterford	3	0	8	0	3	0	0	0	14
Watertown	2	0	5	0	8	0	0	0	15
West Hartford	1	0	7	0	5	0	11	0	24
West Haven	15	0	35	0	18	0	13	1	82
Westbrook	0	0	1	0	9	0	2	0	12
Weston	0	0	2	0	5	0	3	2	12
Westport	7	0	13	0	14	0	2	3	39
Wethersfield	5	0	10	0	5	0	2	0	22
Willington	0	0	0	0	1	0	1	0	2
Wilton	0	0	5	0	15	0	3	1	24
Winchester	0	0	0	0	8	0	3	0	11
Windham	0	0	7	0	54	0	13	1	75
Windsor	4	0	7	0	5	0	0	0	16
Windsor Locks	1	0	2	0	2	0	0	0	5
Wolcott	2	0	7	0	4	0	1	0	14
Woodbridge	1	0	5	0	0	0	3	1	10
Woodbury	4	0	0	0	3	0	0	0	7
Woodstock	2	0	4	0	1	0	2	1	10
Unknown	11	0	18	0	49	0	23	4	105
<u>By County:</u>									
Fairfield	139	0	360	0	701	0	196	299	1695
Hartford	119	0	263	0	330	0	123	1	836
Litchfield	11	0	14	0	76	0	15	0	116
Middlesex	13	0	21	0	173	0	39	1	247
New Haven	183	0	412	0	414	1	204	29	1243
New London	53	0	91	0	77	0	33	0	254
Tolland	10	0	24	0	62	0	18	5	119
Windham	33	0	65	0	90	0	29	2	219
Unknown	2	0	0	0	7	0	6	0	15
Total	563	0	1250	0	1930	1	663	337	4744