



Keeping Connecticut Healthy

## **State of Connecticut Department of Public Health (DPH) 2006-2007 Flu Season Summary**

---

The following table and figures describe influenza activity in Connecticut during the 2006-2007 influenza season.

A total of 2,138 laboratory confirmed reports were received during the 2006-2007 influenza season. Of these, 1,702 (80%) were identified as type A influenza, 188 (9%) as type B, and 248 (11%) of unknown type (Table 1, Figure 1). Reports were received from residents of all eight Connecticut counties. A comparison with data from the past two seasons is shown in Figure 2. The state public health laboratory also evaluated clinical specimens submitted from hospitals and physicians for the presence of influenza (Figure 3).

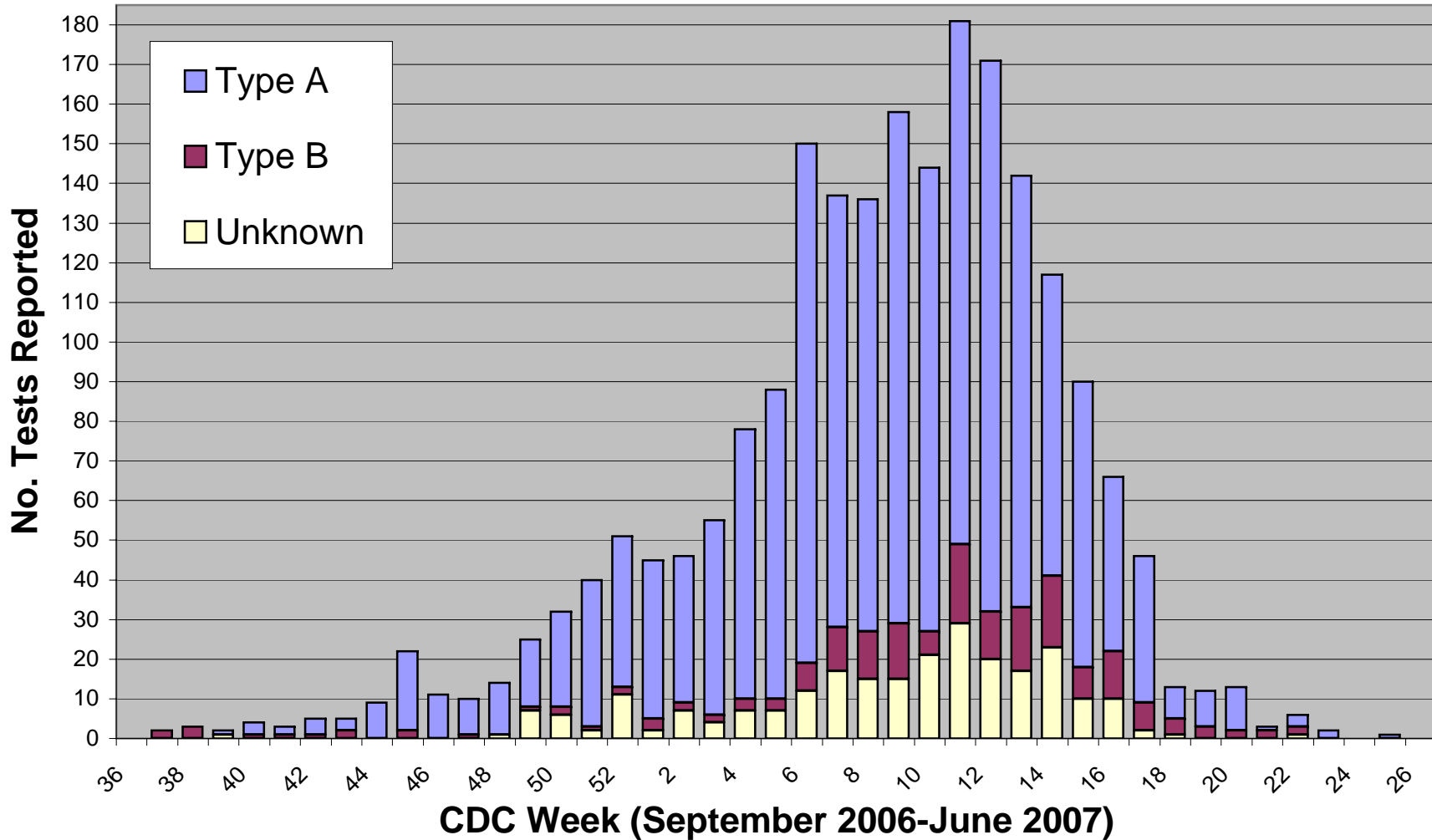
Four additional indicators of flu activity were tracked throughout the 2006-2007 season. Statewide pneumonia admissions, as reported to the Connecticut Hospital Admissions Syndromic Surveillance (HASS) system, have been shown to correlate well with influenza activity and were followed each week (Figure 4). Data from our Emergency Department Syndromic Surveillance (EDSS) system were also analyzed. A summary of three selected syndrome categories used to track flu activity; fever/flu, respiratory, and cold, can be seen in Figure 5. The category fever/flu, has been shown to correlate well with influenza activity. Finally, weekly reports on patients presenting with influenza-like illness (ILI) to select "sentinel physicians" are shown in Figure 6.

If you have any questions concerning this data, please contact Alan Siniscalchi or Maria Andrews at the Department of Public Health, Epidemiology and Emerging Infections Program, at 860-509-7994.

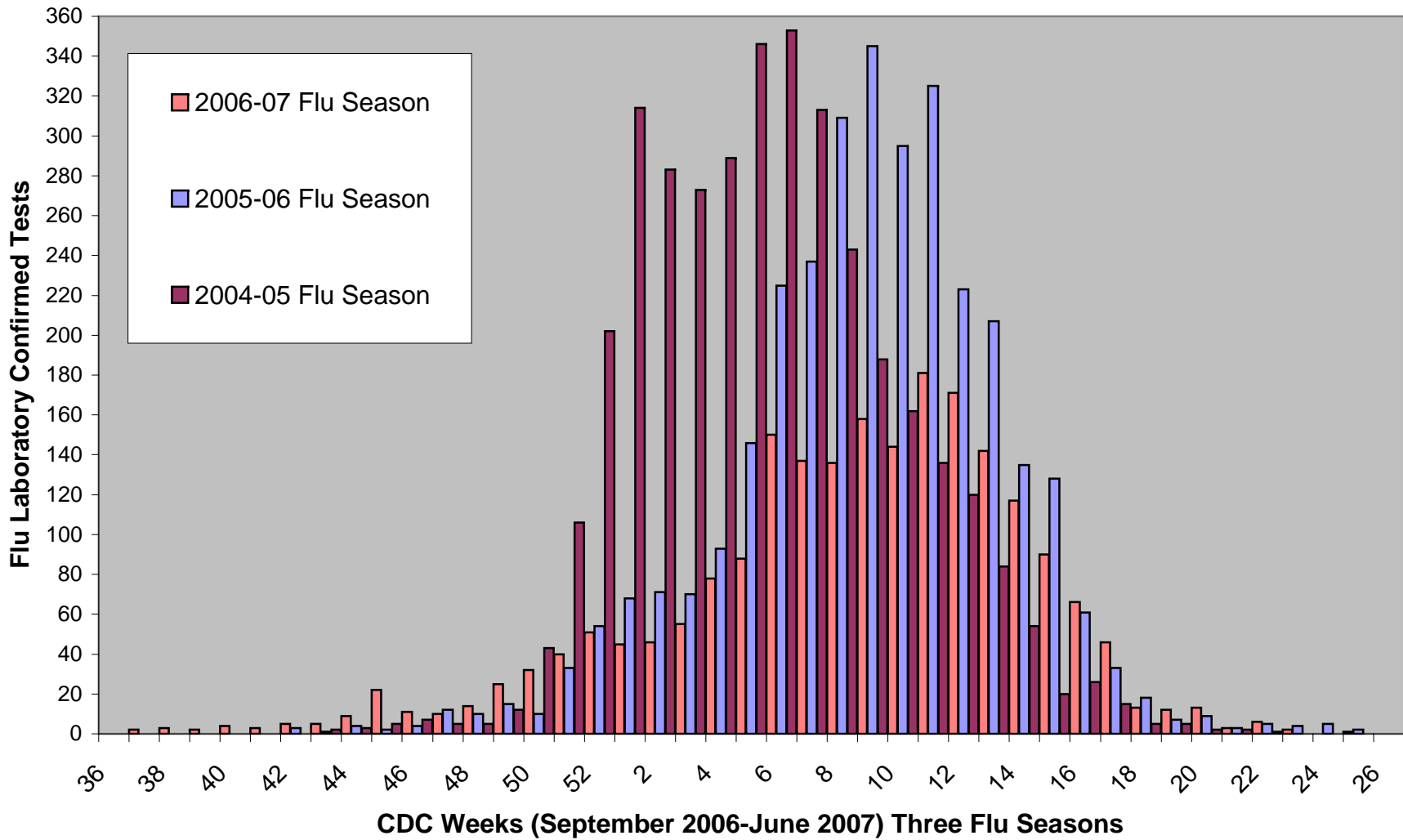
**Connecticut Department of Public Health  
2006 – 2007 Laboratory Confirmed Influenza Testing  
Final 2006-2007 Influenza Season\* Totals**

<i>*The CDC-defined Influenza Season was October 1, 2006 to May 31, 2007</i>					<i>Sept.</i>	<i>Oct.-May</i>	<i>June</i>	<b>Totals</b>
					<b>7</b>	<b>2,128</b>	<b>3</b>	<b>2,138</b>
<b>By Test:</b>		CULTURE			2	186	0	188
		RAPID TEST			5	1,942	3	1,950
<b>By Flu Type:</b>		TYPE A			1	1,698	3	1,702
		TYPE B			5	183	0	188
		UNKNOWN			1	247	0	248
<b>By County:</b>		FAIRFIELD			5	691	0	696
		HARTFORD			0	216	0	216
		LITCHFIELD			0	85	0	85
		MIDDLESEX			0	208	1	209
		NEW HAVEN			1	755	2	758
		NEW LONDON			0	76	0	76
		TOLLAND			0	54	0	54
		WINDHAM			1	43	0	44
<b>By Gender:</b>		FEMALE			3	1,105	2	1,110
		MALE			4	1,023	1	1,028
<b>Age:</b>	<i>Sept</i>	<i>Oct-May</i>	<i>June</i>	<b>Totals</b>	<b>Week</b>	<b>Dates</b>	<b>Totals</b>	
0-4	5	330	0	335	3	January 14-20	55	
5-24	1	720	0	721	4	January 21-27	78	
25-64	0	747	2	749	5	Jan. 28-Feb. 3	88	
≥65	1	331	1	333	6	February 4-10	150	
Min. Age: <1, Max: 100, Aver. Age: 31.7					7	February 11-17	137	
<b>Week</b>	<b>Dates</b>			<b>Totals</b>	<b>8</b>	February 18-24	136	
<b>37</b>	Sept. 10-16, 2006			2	<b>9</b>	Feb. 25-March 3	158	
<b>38</b>	Sept. 17-23			3	<b>10</b>	March 4-10	144	
<b>39</b>	Sept. 24-30			2	<b>11</b>	March 11-17	181	
<b>40</b>	October 1-7			4	<b>12</b>	March 18-24	171	
<b>41</b>	October 8-14			3	<b>13</b>	March 25-31	142	
<b>42</b>	October 15-21			5	<b>14</b>	April 1-7	117	
<b>43</b>	October 22-28			5	<b>15</b>	April 8-14	90	
<b>44</b>	Oct. 29-Nov. 4			9	<b>16</b>	April 15-21	66	
<b>45</b>	November 5-11			22	<b>17</b>	April 22-28	46	
<b>46</b>	Nov. 12-18			11	<b>18</b>	April 29-May 5	13	
<b>47</b>	Nov. 19-25			10	<b>19</b>	May 6-12	12	
<b>48</b>	Nov. 26-Dec. 2			14	<b>20</b>	May 13-19	13	
<b>49</b>	December 3-9			25	<b>21</b>	May 20-26	3	
<b>50</b>	Dec. 10-16			32	<b>22</b>	May 27-June 2	6	
<b>51</b>	Dec. 17-23			40	<b>23</b>	June 3-9	2	
<b>52</b>	Dec. 24-30			51	<b>24</b>	June 10-16	0	
<b>1</b>	Dec. 31-Jan. 6			45	<b>25</b>	June 17-23	1	
<b>2</b>	Jan. 7-13, 2007			46	<b>26</b>	June 24-30	0	

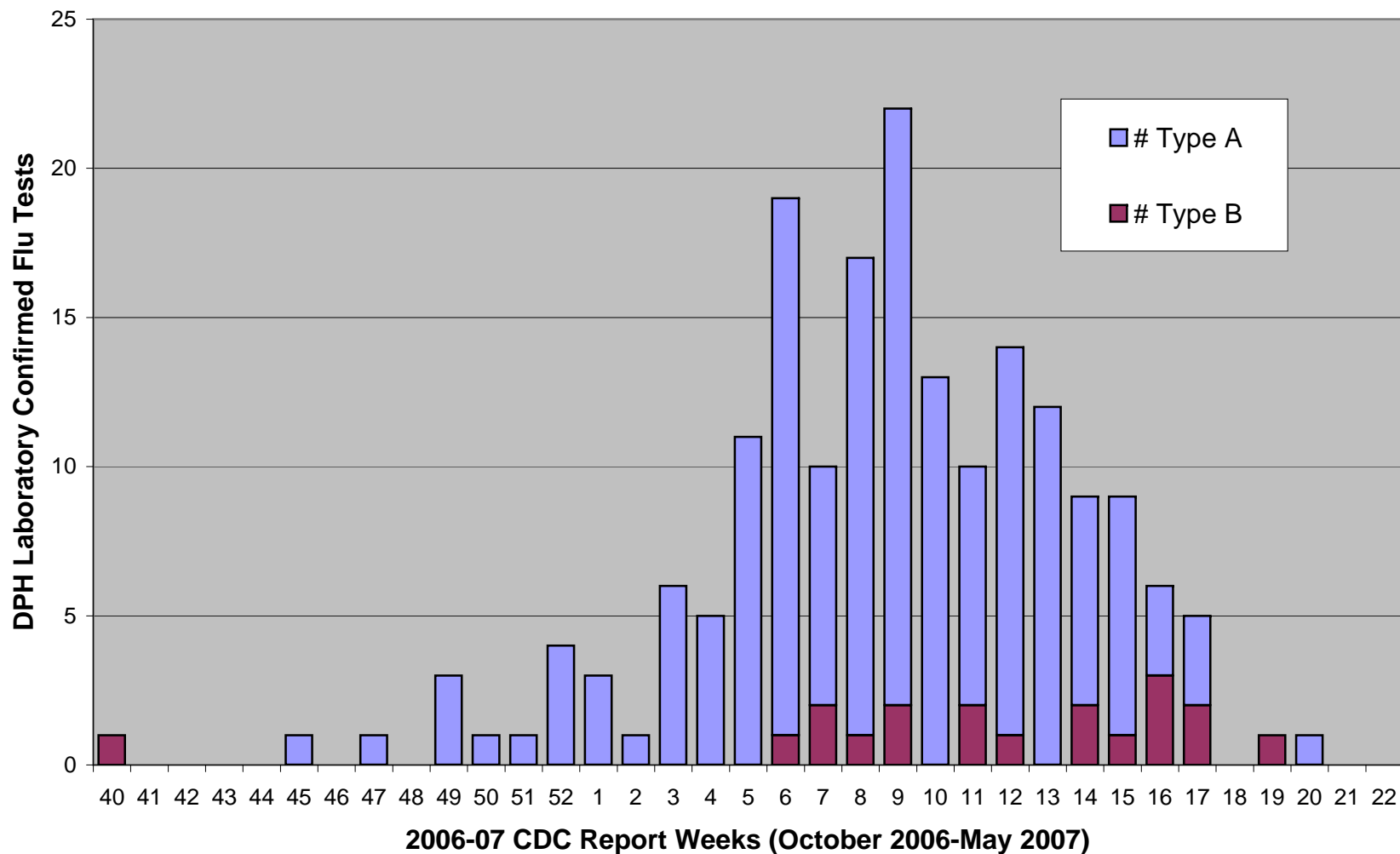
**Figure 1. 2006-07 Influenza Season:  
Laboratory Confirmed Tests by Flu Type**



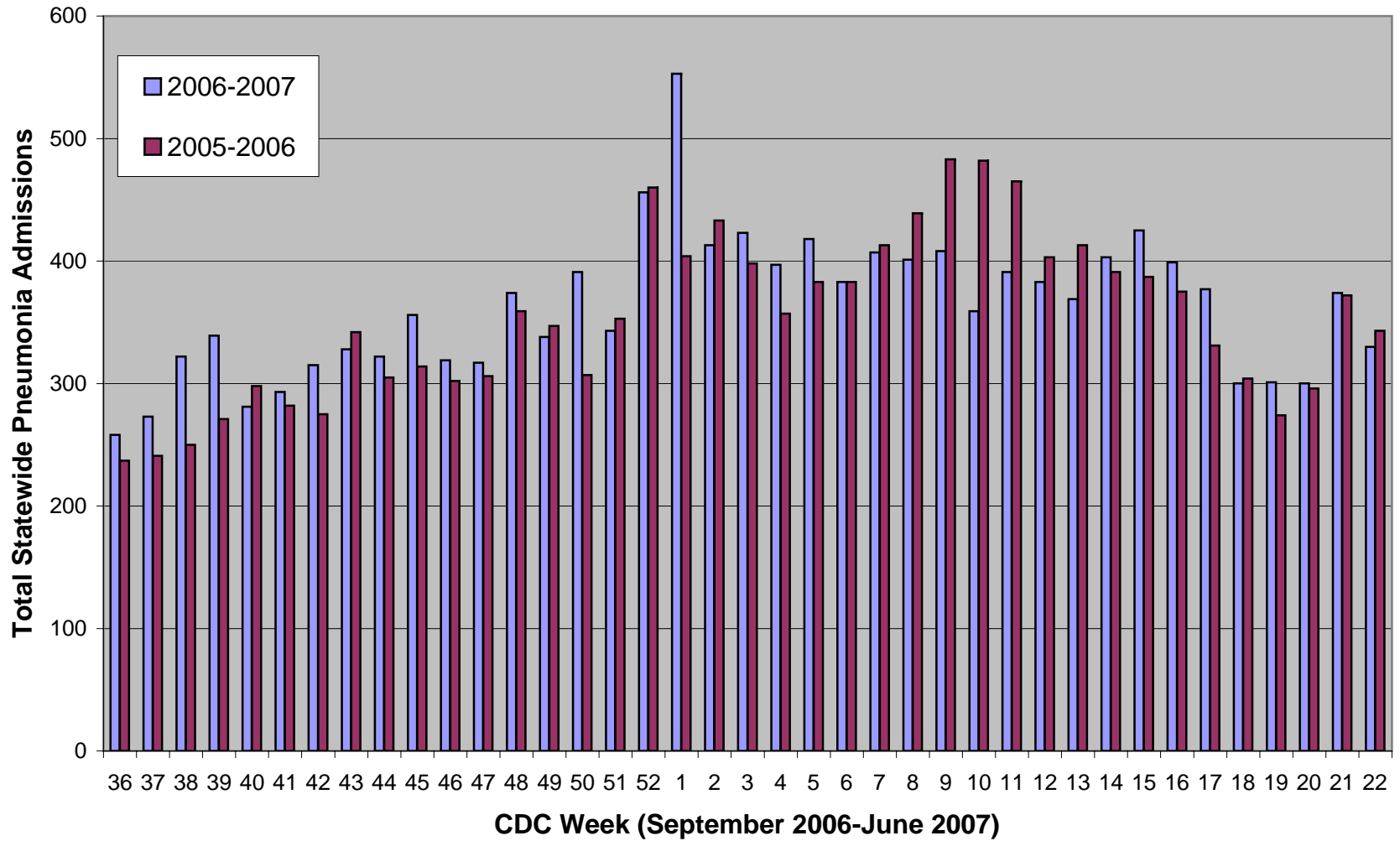
**Figure 2. 2006-07, 2005-06, and 2004-05  
Influenza Seasons: Laboratory Confirmed Tests (LCT)**



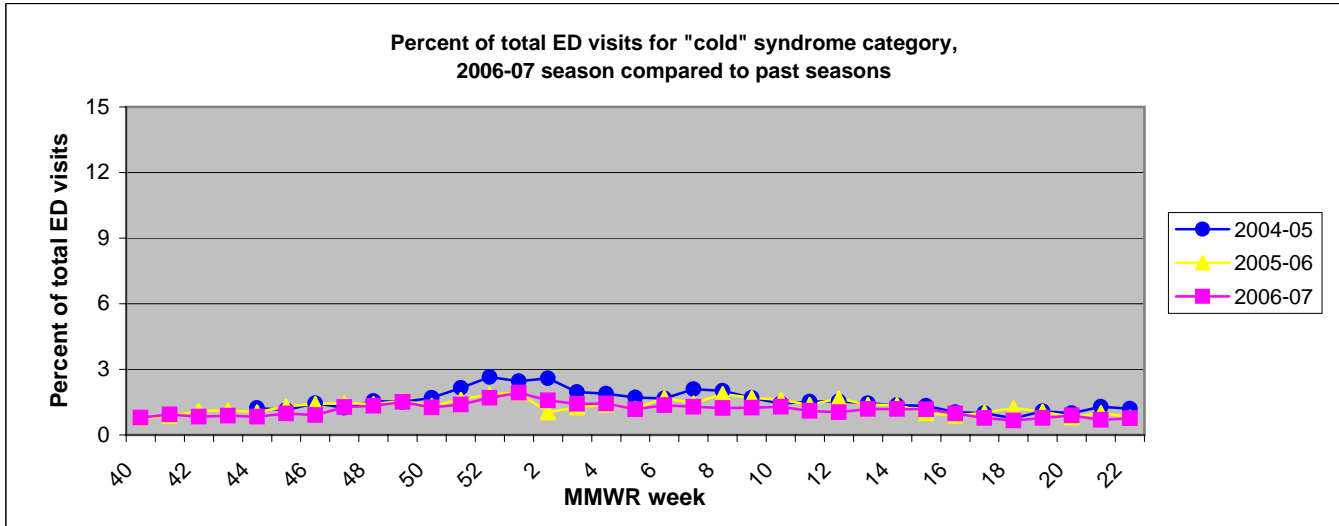
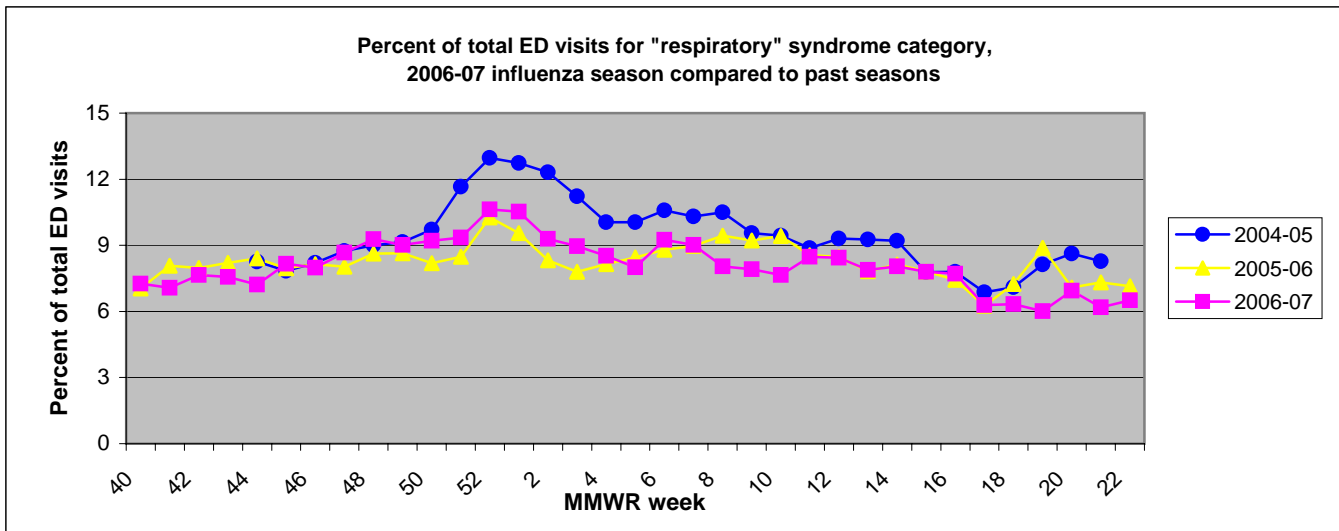
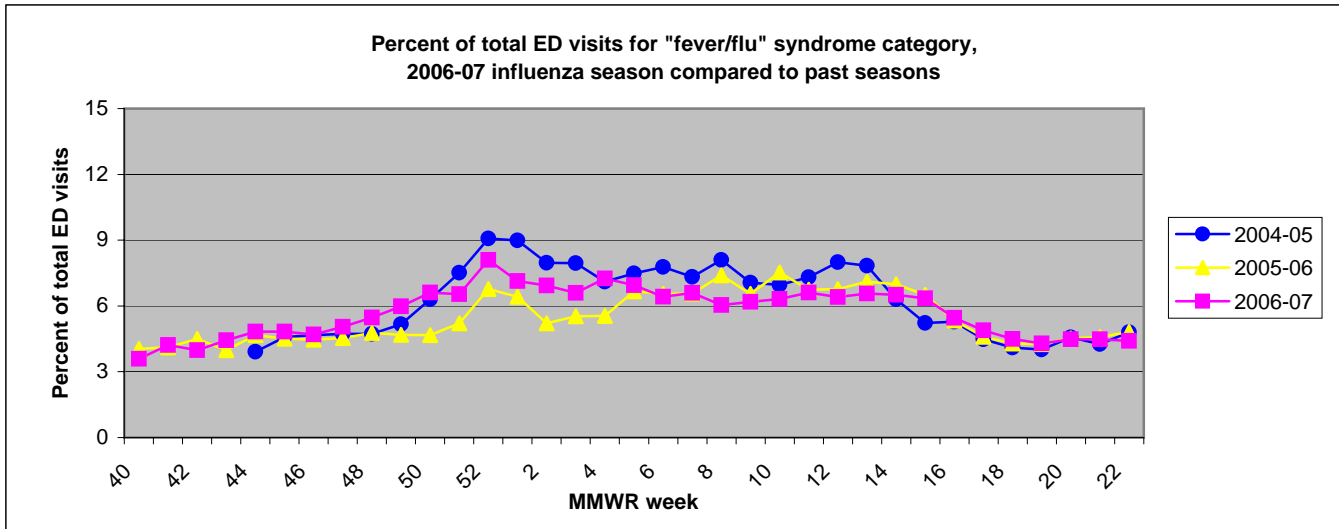
**Figure 3. Number of Influenza Isolates Reported by Influenza Type and CDC Report Week, DPH Laboratory, October 2006-May 2007 Season**



**Figure 4. Hospital Admissions Syndromic Surveillance (HASS) System, Statewide Pneumonia Admissions; 2006-07 & 2005-06**



**Figure 5. Emergency department syndromic surveillance (EDSS) system data**



The EDSS system was established in late 2004 and is based on chief complaint data from hospital emergency departments. Currently DPH is receiving data from 17 hospitals (complete data is available for 12 and 10 hospitals for the 2004-05 and 2005-06 seasons, respectively). Chief complaint data is coded into 8 syndrome categories. In previous influenza seasons, 3 syndrome categories have been significantly associated with laboratory confirmed influenza tests (LCT). In 2005-06, the "fever/flu" category was strongly correlated with LCT; in 2004-05 "fever/flu", "respiratory" and "cold" all correlated with LCT.

Figure 6. Sentinel Provider Reports of Influenza-Like Illness (ILI), 2006-07

