

State of Connecticut  
Connecticut Department of Public Health

# Connecticut School-based Asthma Surveillance Report 2019

*School Calendar Years:*

*2012 - 2014*

---



# Connecticut School-based Asthma Surveillance Report 2019

## *School Calendar Years: 2012 –2014*

**Commissioner Raul Pino, MD, MPH  
Connecticut Department of Public Health**

Publication Date: February 2019

Prepared by:

Rory Angulo MD, MBA  
Epidemiologist  
Community Health and Prevention Section  
Public Health Initiatives Branch  
Connecticut Department of Public Health

For additional information about Connecticut School-based Asthma Surveillance Report 2018 contact:

Connecticut Department of Public Health  
Asthma Program  
410 Capitol Avenue  
PO Box 340308, MS# 11HLS  
Hartford, CT 06134-0308  
Phone: (860) 509-8251  
<http://www.ct.gov/dph/asthma>

Suggested citation: Angulo, R., Peng, J., & Bournaki, M. (2019). Connecticut School-based Asthma Surveillance Report 2019, School Calendar Years: 2012 – 2014. Connecticut Department of Public Health, Community Health and Prevention Section, Hartford, CT.

Funding partially provided by the Centers for Disease Control and Prevention, Grant Number: NU59 EH000516-10

# Acknowledgments

---

## ***Connecticut Department of Public Health Executive Leadership***

Raul Pino, MD, MPH  
*Commissioner*

Janet M. Brancifort, MPH  
*Deputy Commissioner*

Rosa M. Biaggi, MPH, MPA  
*Section Chief – Community Health and Prevention Section*

Mark Keenan, RN, MBA  
*Section Chief – Community Health and Prevention Section*

Mehul Dalal, MD, MSc, MHS  
*Chronic Disease Director*

---

## ***Connecticut Department of Public Health***

### ***Asthma Program Staff***

Marie-Christine Bournaki, RN, PhD  
*Program Director*

Kathryn Britos-Swain, MSN, BS, RN  
*Nurse Consultant*

### ***Epidemiology Unit Staff***

Justin Peng, MPH  
*Senior Epidemiologist*

Rory Angulo MD, MBA  
*Epidemiologist*

---

Special thank you to the following people for their contributions to making this report possible:

Connecticut School Nurses

Stephanie Knutson, MSN, RN  
*Connecticut State Department of Education*

# Table of Contents

I.	Key Findings.....	1
II.	Introduction.....	2
III.	Results.....	4
A.	Data Completeness.....	4
B.	Asthma Prevalence by Demographics.....	5
C.	Asthma Prevalence by District Reference Groups.....	7
D.	Asthma Severity.....	10
E.	Asthma Action Plan.....	13
F.	Asthma Documentation and Health History.....	14
G.	School District Profile on Asthma.....	15

## Tables

Table 1.	Asthma Prevalence by Demographics, Connecticut Public Schools, 2012-2014.....	5
Table 2.	Asthma Prevalence by Demographics and School Level, Connecticut Public Schools, 2012-2014.....	6
Table 3.	Asthma Prevalence by District Reference Groups (DRG) and Demographics, Connecticut Public School, 2012-2014.....	8
Table 4.	Asthma Severity by Various Demographic Characteristics, Connecticut Public and Private Schools, 2012 – 2014.....	10
Table 5.	Percentage of Students with Asthma Having Asthma Action Plan (AAP) by Various Demographic Characteristics, Connecticut Public and Private Schools, 2012 to 2014.....	13
Table 6.	Percentage of Students with Various Asthma Documentation and Health History, Connecticut Public and Private Schools, 2012-2014.....	14
Table 7.	School District Profile. Connecticut 2012-2014.....	16

## Figures

Figure 1.	Asthma prevalence by District Reference Group, by year. Connecticut 2012-2014.....	7
-----------	--	---

## Appendix

Appendix 1.	Listing of School Reporting. Connecticut, 2012-2014.....	38
-------------	--	----

## I. Key Findings

- Approximately, one of every seven students (14.3%) in the Connecticut public school system is affected with asthma. The asthma prevalence rate has remained stable, from 14.2% in 2011 to 14.3% in 2014.
- Asthma predominantly affects, at about the same prevalence rate, students in the elementary (14.6%) and middle (14.5%) school level. High school level students have a lower prevalence rate at 13.9%.
- Male students (16.0%) are affected the most with a higher prevalence rate of asthma when compared to females (12.7%).
- Non-Hispanic black (17.5%) and those of Hispanic (15.8%) origin students are the groups with the highest prevalence rate when compared to other non-Hispanic (14.0%) and non-Hispanic white (10.1%) students.
- The Connecticut State Department of Education's (SDE) District Reference Groups (DRG) groups public school districts with similar socioeconomic status and needs together. In general, with each decrease in DRG classification, from A to I, the higher the asthma prevalence. Asthma prevalence ranged from 8.6% for DRG A, to 19.8% for DRG I. Five of the ten largest cities (Bridgeport, Hartford, New Britain, New Haven and Waterbury) in Connecticut, along with New London and Windham are classified under DRG I.
- Analysis of asthma prevalence by severity indicates that eight percent of students are classified as having moderate or severe persistent asthma. This form of severity affects the most to high school students (8.3%) than elementary (7.9%) and middle (7.8%) school students. Non-Hispanic black (9.3%) and Hispanics (8.7%) students are affected the most with moderate or severe persistent asthma than non-Hispanic white (7.2%) or other non-Hispanic (7.1%) students.
- Overall, 10.6% of students with asthma have their Asthma Action Plan (AAP). Documentation of having an AAP has increased yearly, from 9.1% in 2012 to 11.4% in 2014. Students from private school, compared to public schools, show a higher percentage of having an AAP, 15.1% and 10.2%, respectively. Non-Hispanic Black students (11.8%) have a higher proportion of having their AAP, compared to non-Hispanic White (10.3%), Hispanics (10.3%) and other non-Hispanic (9.3%). Students affected with moderate or severe persistent asthma (23.8%) have a higher proportion of having their AAP, compared to those with intermittent (13.3%) or mild persistent (10.3%) form of asthma.

## II. Introduction

Connecticut General Statute (CGS) Sec. 10-206a allows each local or regional board of education to require from each student, a health assessment prior to public school enrollment, in either grade six or seven and in either grade nine or ten. The health assessment includes a physical examination, some laboratory tests and screening results, in addition to documentation of chronic disease assessment, such as asthma. The form is filled out by both, clinician and parent/legal guardian, in their corresponding sections, to document diagnosis of asthma and other screening questions of public health concern.

Since 2004, The State of Connecticut Department of Public Health (DPH) Asthma Program, manages the statewide School-based Asthma Surveillance System (SBASS), which collects, analyzes and publishes a report based on the asthma section of the School Health Assessment Record (HAR). The current publication summarizes the information collected during school calendar year 2012-2013, 2013-2014, and 2014-2015.

### **School-based Asthma Surveillance System**

For school calendar years 2012-2013, 2013-2014 and 2014-2015, CGS §10-206 required that local or regional board of education report to the DPH, on an annual basis, the total number of enrolled students per school and per school district having a diagnosis of asthma at time of public school enrollment, in grade six or seven and in grade nine or ten (CGS §10-206 was subsequently changed to report triennially to DPH in 2017). For purposes of the SBASS, a student is considered as having asthma if he/she meets any of the following conditions: 1) has a provider's diagnosis of asthma indicated on the HAR, 2) has a provider Asthma Action Plan (AAP) on file, 3) has a provider medication order for asthma medication on file, 4) has self-carry medication approval, 5) has asthma medication in school, 6) has a parental note on file indicating the child has asthma, 7) shows symptoms of asthma, or 8) any other indications that the child is suffering from asthma.

At the beginning of each school year, the DPH Asthma Reporting Form (ARF) is distributed to individual school nurses. The ARF collects the following information of students with asthma: school name, grade, race, ethnicity, asthma documentation, asthma severity and health history. School district nurse supervisors collect the individual ARF forms of schools under their jurisdiction. The forms are tallied and summarized in the District Asthma Reporting Summary (DARS) form. All individual ARFs and DARS are then submitted, by the school district nurse supervisor, to DPH, by September of the following school year. DPH conducts data quality checks and completeness of the submitted ARF and DARS, prior to entering the information into the SBASS database, a Microsoft Access-based application.

### **Asthma Rate Calculation – Method**

Asthma rates were calculated by dividing the total number of students reported with asthma by the number of total students enrolled in the HAR-required grades of the school district. School nurses are required to report on students with asthma at the grades in which a HAR is required, as determined by the school district. However, in addition to the submitting data for the HAR-required grade, some schools submit data for other grades as well. Upon conducting

preliminary data quality review, it was noted that not all schools under the same district have uniformly reported on the specific grade in which HAR is required for the school district. Some schools reported non HAR-required grades only, including grades not subject to reporting (e.g. second, third, eighth grade, etc.) or have reported other grades in addition to the HAR-required grade. Some school nurses report only new students upon entry and attending for the first time in the public school system, for example: a newly enrolled student (with asthma) who starts attending a public school at first grade, however the school's HAR-required grade is Prekindergarten (PK) or Kindergarten (K). The new student is reported but not all other students in the same grade who have been previously reported when in PK or K. Some other characteristics were also noted, such as, not all same grade levels that are part of an education level (elementary, middle and high school) in a school district correspond to the same grade levels of other school districts or some school districts do not offer education services that correspond to certain education level. For example: Cheshire School District's Elementary level include grades K-6, Middle school include grades 7-8 and High school include grades 9-12; compared to Hartford School District's elementary grades PK-5, middle school grades 6-8 and high school grades 9-12. Canterbury Public Schools offer PK-4 grades for elementary, 5-8 for middle school and no high school grades under their school district, rather the district covers their resident's high school tuition and transportation when attending a designated high school. This subtle school district makeup and their variations may affect rates when they are analyzed as an overall at the education level. In order to address grade arrangement variations under an education level among school districts, or missing required HAR-grade in the presence of other grades, and following the required HAR-grade, this report defaulted its analysis to include the required HAR-grades under CGS §10-206 and those that were additionally reported, thus widening its analysis to all grades and grouped to the corresponding education level for which the required HAR-grade intent is to represent at the education level. Therefore, the following grades were considered representative of an education level: PK-fifth grades for elementary level, six through eight grades for middle school level and nine through twelve grades for high school level. The enrollment data, as provided by the State Department of Education, included all grade levels and arranged as previously described. The corresponding grades for student reported with asthma were compared with enrollment data. The methodology to calculate asthma rates considered the number with the highest value, among the grades within an education level, as representative of what occurs across all grades in the same education level. This number was compared against the average enrollment for grades under the corresponding education level. This methodology was considered as the best approach in order to prevent data exclusion of schools reporting non HAR-grades, same likelihood for all grades to be included in the construction of rate calculation, increased likelihood of selecting a representative value of asthma cases within an education level and lastly, standardization of education level when grouping and including all grade levels. Overall, 61,936 student with asthma records were reported, of them 91.2% (n=56,511) were matched to the corresponding enrollment information, on the basis of reporting year, school district and SDE unique identification for a given school.

Of the records of student with asthma that corresponded to enrollment data, 22.3% from PK and 72.5% from K grades were for elementary school; for middle school 68.9% and 30.1% were

from sixth and seventh grades, respectively. Lastly, for high school level 30.9% and 63.9% were from ninth and tenth grades, respectively.

### III. Results

For purposes of this report, we will refer to the school calendar year range by its beginning year, this is, the school calendar year that begins on Fall of 2012 and ends in Spring of 2013 (2012-2013) would be referred as school year 2012. The number of reporting school districts by year were 181 (94.8%) for 2012, 181 (94.8%) for 2013 and 183 (95.8) for 2014. This report considered as school districts the different variations of school groups such as regional districts, magnet schools, charter schools and regional education service centers. A total of 1,143 schools reported 20,816 students with asthma for school year 2012; 1,137 schools reported 20,695 students with asthma for school year 2013 and lastly, a total of 1,131 schools reported 20,425 students with asthma for school year 2014. Appendix 1 lists School Districts and schools that reported for school years 2012-2014

#### A. Data Completeness

Both, the student with asthma and enrollment datasets were assessed for data completeness for gender, ethnicity and race and asthma severity. The student with asthma data had a total of 649 (1.1%) of records that did not specified student gender. A total of 18,916 records (30.5%) of students with asthma did not specified ethnicity. A total of 11,922 (19.3%) records of students with asthma were reported with race unknown (15%) or other (4.23%). A total of 25,665 (41.4%) records of students with asthma were reported as having ethnicity/race combination values with either unknown or other. A total of 20,255 (32.7%) of records did not specify the level of asthma severity.

The enrollment dataset had all records with a gender assigned to either male or female, there were no records with missing/other/unknown values. All records from the enrollment dataset had ethnicity values that were either Hispanic or non-Hispanic; there were no missing, unknown or other values. A total of 130,066 (9.0%) records had race assignment as 'Other', including 'Two or more races'; no missing or unknown values.

Among elementary grade level, 5,662 (24.5%) of the student with asthma records were contributed by grade PK, while 16,144 (69.9%) were contributed by K, the remaining of 1298 (5.6%) were contributed by first and fifth grade records. Among middle school grade levels, 13,720 (68.8%) of the student with asthma records were contributed by the sixth grade, while 6,018 (30.2%) were contributed by the seventh grade, the remaining of 214 (0.1%) was contributed by the eighth grade. Among high school grade levels, 6,385 (33.8%) of the student with asthma records were contributed by the ninth grade, while 11,563 (61.2%) of them were contributed by the tenth grade, the remaining of 932 (4.9%) records were contributed by the eleventh and twelfth grades.



## B. Asthma Prevalence by Demographics

Previous report for school calendar years 2009-2011, with an overall rate of 13.9%, shows a yearly increase in prevalence from 13.7% in 2009 to 14.2% in 2011. Analysis for 2012-2014 school calendar years has been tabulated into different categories. Table 1 displays the information by year, by school level, by gender and by race/ethnicity.

Table 1. Asthma Prevalence by Demographics, Connecticut Public Schools, 2012 - 2014

Demographic Characteristics	%	95% CI
<b>Total</b>	<b>14.3</b>	<b>(14.2 - 14.4)</b>
<b>School Year</b>		
2012	14.4	(14.2 - 14.6)
2013	14.3	(14.1 - 14.5)
2014	14.3	(14.1 - 14.5)
<b>School Level</b>		
Elementary	14.6	(14.4 - 14.9)
Middle	14.5	(14.3 - 14.7)
High	13.9	(13.7 - 14.0)
<b>Gender</b>		
Male	16.0	(15.9 - 16.2)
Female	12.7	(12.6 - 12.9)
<b>Race/Ethnicity</b>		
Non-Hispanic White	10.1	(10.0 - 10.3)
Non-Hispanic Black	17.5	(17.1 - 17.9)
Hispanic	15.8	(15.5 - 16.2)
Non-Hispanic Other	14.0	(13.4 - 14.7)

Asthma prevalence rates have behaved steadily for the period of analysis 2012-2014. The overall rate of 14.3% signals that for every seven students attending a public school in Connecticut, one of them is affected with asthma. At the school level, asthma prevalence rates were significantly higher among elementary (14.6%) and middle school (14.5%) level students, although very similar between them, than high school (13.9%) level. The prevalence rate among male students (16.0%) is significantly higher than female students (12.7%). The asthma prevalence rate is highest among Non-Hispanic Black students (17.5%), followed by Hispanic (15.8%), other non-Hispanic (14.0%) and non-Hispanic White (10.1%) students; the differences between students within each race/ethnicity group are statistically significant.

Table 2 presents the breakdown of school level asthma prevalence rates by demographic characteristics. Accordingly, elementary and middle school level students have higher asthma prevalence rates in each category than their high school counterparts, but gender, where females have a significant higher prevalence rate among high school students. During school calendar years 2012 and 2013, prevalence for elementary and middle school levels have a significantly higher prevalence rate than high school level. By 2014, high school (14.5%) was the level with a slightly higher prevalence rate, compared to elementary (14.2%) and middle (14.2%) school, however, prevalence rates do not have a statistical significant difference at the 95% confidence interval. Under Race/Ethnicity, overall for each subcategory, except non-Hispanic Whites for elementary and middle school level, rates tends to lower its prevalence with each increased school level. Non-Hispanic Black and students with Hispanic background are the groups with the highest prevalence rate within their category and for each school level. Moreover, non-Hispanic Black elementary school level students have a significantly higher prevalence than any other race group at any school level; about one for every five non-Hispanic Black elementary school level student is affected with asthma. Non-Hispanic Black elementary level students are affected by about two-fold compared to Non-Hispanic White of the same school level.

Overall, prevalence rate shows a slight increase compared with previous analysis period 2009-2011. Rates shows with a greater prevalence for Elementary and Middle school level students, however it remains essentially unchanged from 2009-2011 data. Moreover, current asthma prevalence profile do not show a significant shift between comparable categories for each school level from previous report; the same school level (Elementary and Middle school) show with high prevalence; gender shows the same pattern, males are mostly affected in each school level; and Race/Ethnicity category, Non-Hispanic Black and Hispanics are the groups mostly affected in each school level.

Table 2. Asthma Prevalence by Demographics and School Level, Connecticut Public Schools, 2012-2014

Demographic Characteristics	Elementary School		Middle School		High School	
	%	95% CI	%	95% CI	%	95% CI
<b>Total</b>	<b>14.6</b>	<b>(14.4 - 14.9)</b>	<b>14.5</b>	<b>(14.3 - 14.7)</b>	<b>13.9</b>	<b>(13.7 - 14.0)</b>
<b>School Year</b>						
2012	14.8	(14.4 - 15.1)	14.6	(14.2 - 14.9)	13.8	(13.5 - 14.1)
2013	15.0	(14.6 - 15.4)	14.8	(14.4 - 15.1)	13.3	(13.0 - 13.7)
2014	14.2	(13.8 - 14.5)	14.2	(13.9 - 14.5)	14.5	(14.1 - 14.8)
<b>Gender</b>						
Male	17.5	(17.2 - 17.8)	16.2	(15.9 - 16.5)	14.4	(14.2 - 14.7)
Female	12.4	(12.1 - 12.6)	12.7	(12.4 - 12.9)	13.1	(12.8 - 13.4)
<b>Race/Ethnicity</b>						
Non-Hispanic White	10.3	(10.1 - 10.6)	10.3	(10.1 - 10.6)	9.7	(9.5 - 10.0)
Non-Hispanic Black	19.7	(18.9 - 20.5)	18.0	(17.3 - 18.8)	15.1	(14.5 - 15.8)
Hispanic	17.4	(16.9 - 18.0)	15.9	(15.4 - 16.5)	13.9	(13.4 - 14.4)
Non-Hispanic Other	17.9	(16.6 - 19.1)	12.7	(11.6 - 13.7)	11.1	(10.0 - 12.2)

### C. Asthma Prevalence by District Reference Groups

Figure 1 shows asthma prevalence by District Reference Groups (DRG), by year. DRG<sup>1</sup> is a classification system, used by the CT SDE, which groups like local public school districts according to indicators of socio-economic status (family income, parental education and parental occupation), indicators of need (percentage of public school children in single parent families, percentage of students with income-eligible to receive free/reduced-price meals and percent of students that speak a language other than English at home) and enrollment data.

The DRG classification labels public school districts into nine groups, from group A as the very affluent, low-need district, to group I as districts with low socio-economic status, high-need. As shown in figure 1, school districts classified as DRG A have the lowest asthma prevalence rate and school districts classified as DRG I have the highest asthma prevalence rate. Overall, at each decreasing instance of DRG classification, the asthma prevalence rate increases. DRG asthma prevalence rates ranged from 8.1 % for DRG A, to 20.1% for DRG I.

Figure 1. Asthma prevalence by District Reference Group, by year. Connecticut 2012-2014.

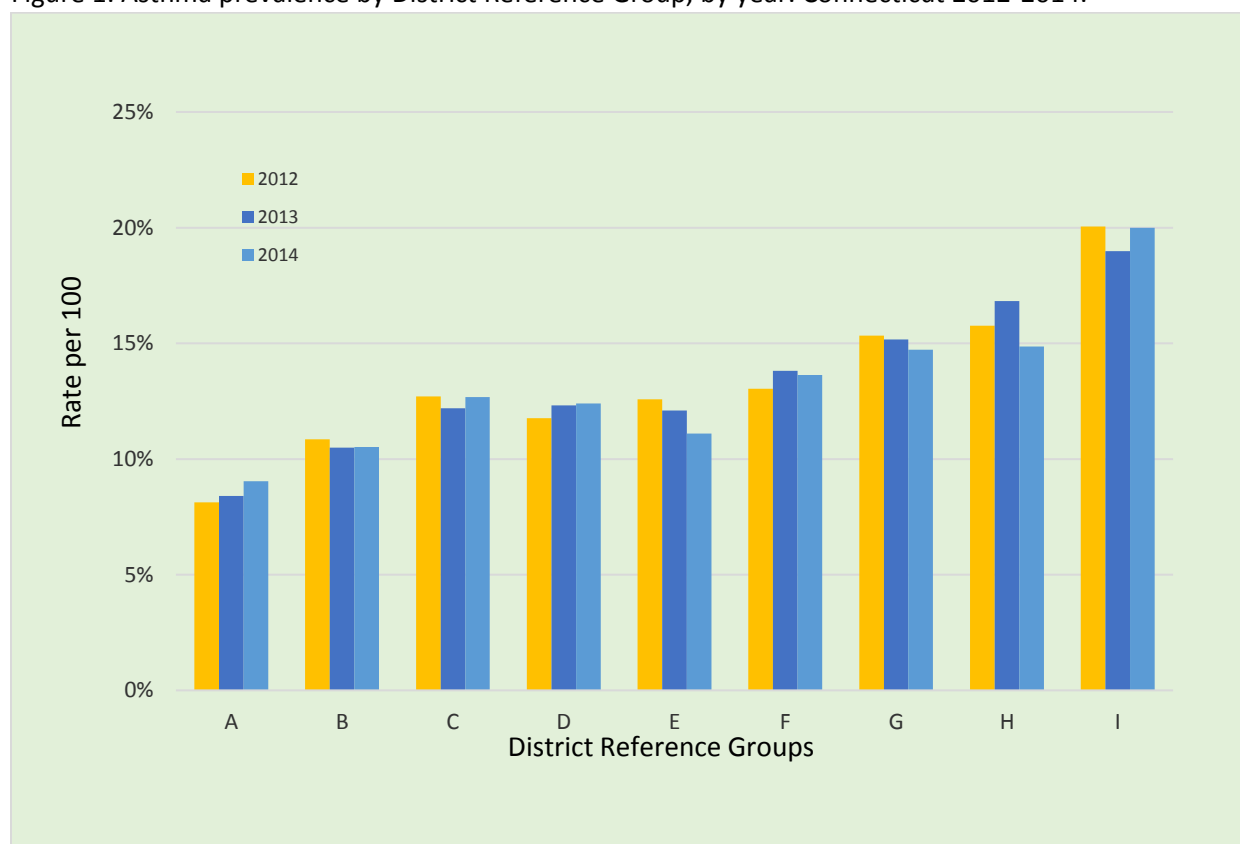


Table 3 shows the average asthma prevalence rates for each of the DRG classification, by specific demographic characteristics.

<sup>1</sup> For more information on DRG, see [http://sdeportal.ct.gov/Cedar/Files/Pdf/Reports/db\\_drg\\_06\\_2006.pdf](http://sdeportal.ct.gov/Cedar/Files/Pdf/Reports/db_drg_06_2006.pdf)

Table 3. Asthma Prevalence by District Reference Groups (DRG) and Demographics, Connecticut Public School, 2012-2014

Demographic Characteristics	A		B		C	
	%	95% CI	%	95% CI	%	95% CI
<b>Total</b>	<b>8.6</b>	<b>(8.2 - 9.0)</b>	<b>10.5</b>	<b>(10.3 - 10.8)</b>	<b>12.3</b>	<b>(11.9 - 12.8)</b>
<b>School Level</b>						
Elementary	8.6	(7.8 - 9.3)	9.6	(9.2 - 10.0)	9.9	(9.2 - 10.7)
Middle	8.3	(7.6 - 9.0)	10.7	(10.3 - 11.1)	12.9	(12.2 - 13.6)
High	8.9	(8.2 - 9.6)	11.2	(10.8 - 11.6)	13.7	(12.9 - 14.4)
<b>Gender</b>						
Male	10.3	(9.7 - 10.9)	11.6	(11.2 - 11.9)	14.2	(13.5 - 14.8)
Female	6.9	(6.4 - 7.5)	9.6	(9.3 - 9.9)	11.1	(10.5 - 11.7)
<b>Race/Ethnicity</b>						
Non-Hispanic White	6.8	(6.4 - 7.3)	8.1	(7.8 - 8.3)	10.9	(10.4 - 11.4)
Non-Hispanic Black	29.1	(13.9 - 44.2)	19.7	(17.2 - 22.2)	41.3	(31.1 - 51.4)
Hispanic	14.6	(9.6 - 19.6)	13.7	(12.5 - 15.0)	22.7	(17.7 - 27.8)
Non-Hispanic Other	9.3	(5.8 - 12.8)	8.7	(7.6 - 9.7)	23.6	(18.0 - 29.1)

Demographic Characteristics	D		E		F	
	%	95% CI	%	95% CI	%	95% CI
<b>Total</b>	<b>12.2</b>	<b>(12.0 - 12.5)</b>	<b>11.8</b>	<b>(11.3 - 12.4)</b>	<b>13.4</b>	<b>(12.9 - 14.0)</b>
<b>School Level</b>						
Elementary	10.9	(10.4 - 11.4)	13.3	(12.3 - 14.3)	14.0	(13.1 - 14.9)
Middle	14.2	(13.7 - 14.7)	11.4	(10.6 - 12.2)	14.1	(13.3 - 15.0)
High	11.3	(10.9 - 11.8)	10.9	(10.0 - 11.8)	12.1	(11.2 - 12.9)
<b>Gender</b>						
Male	13.3	(12.9 - 13.7)	13.4	(12.6 - 14.2)	15.4	(14.6 - 16.1)
Female	11.1	(10.7 - 11.5)	11.4	(10.7 - 12.2)	12.0	(11.3 - 12.7)
<b>Race/Ethnicity</b>						
Non-Hispanic White	10.1	(9.8 - 10.5)	10.6	(10.0 - 11.2)	11.2	(10.5 - 11.8)
Non-Hispanic Black	19.1	(16.8 - 21.4)	50.9	(36.4 - 65.5)	30.8	(25.8 - 35.8)
Hispanic	14.2	(12.9 - 15.5)	29.8	(23.2 - 36.4)	18.0	(15.4 - 20.6)
Non-Hispanic Other	14.1	(12.5 - 15.7)	26.5	(19.2 - 33.9)	14.6	(11.5 - 17.7)

Demographic Characteristics	G		H		I	
	%	95% CI	%	95% CI	%	95% CI
<b>Total</b>	<b>15.1</b>	<b>(14.7 - 15.4)</b>	<b>16</b>	<b>(15.7 - 16.4)</b>	<b>19.8</b>	<b>(19.5 - 20.1)</b>
<b>School Level</b>						
Elementary	16.0	(15.4 - 16.6)	18.3	(17.7 - 18.9)	20.7	(20.2 - 21.3)
Middle	14.8	(14.3 - 15.4)	15.5	(14.9 - 16.0)	20.3	(19.8 - 20.9)
High	14.5	(13.9 - 15.0)	13.7	(13.1 - 14.3)	18.1	(17.5 - 18.6)
<b>Gender</b>						
Male	17.0	(16.5 - 17.5)	18.5	(18.0 - 19.0)	22.0	(21.5 - 22.4)
Female	13.4	(12.9 - 13.9)	13.1	(12.6 - 13.5)	17.6	(17.1 - 18.0)
<b>Race/Ethnicity</b>						
Non-Hispanic White	11.4	(10.9 - 11.8)	11.6	(11.0 - 12.2)	14.7	(13.8 - 15.6)
Non-Hispanic Black	17.7	(16.6 - 18.7)	15.6	(14.7 - 16.6)	17.1	(16.5 - 17.8)
Hispanic	14.8	(13.9 - 15.7)	12.9	(12.3 - 13.5)	17.4	(17.0 - 17.9)
Non-Hispanic Other	15.1	(13.4 - 16.8)	14.1	(12.5 - 15.7)	19.8	(17.5 - 22.1)

## D. Asthma Severity

The framework used to classify asthma severity is based on the Expert Panel Report (EPR) 3 Guidelines for the Diagnosis and Management of Asthma<sup>2</sup>. Accordingly, clinicians use the current impairment (nighttime awakenings, short-acting Beta2-agonist use, missed work/school days, normal daily activities engagement, quality-of-life assessments and spirometry) domain and future risk (adverse effects, exacerbations, progressive worsening of symptoms) domain criterion for asthma severity classification. Asthma classification is important as it helps guide the type, amount and scheduling of therapy.

Table 4. Asthma Severity by Various Demographic Characteristics, Connecticut Public and Private Schools, 2012 – 2014.

Demographic Characteristics	Intermittent (%)	Mild Persistent (%)	Moderate or Severe Persistent (%)
<b>Total</b>	<b>30.4</b>	<b>61.5</b>	<b>8.0</b>
<b>School Year</b>			
2012	33.8	57.7	8.4
2013	29.3	62.6	8.1
2014	28.3	64.2	7.5
<b>School Type</b>			
Private	27.7	64.6	7.7
Public	30.7	61.3	8.0
<b>School Level</b>			
Elementary	26.4	65.6	7.9
Middle	32.3	59.9	7.8
High	34.1	57.6	8.3
<b>Gender</b>			
Male	30.3	61.5	8.1
Female	30.6	61.6	7.9
<b>Race/Ethnicity</b>			
Non-Hispanic White	29.3	63.5	7.2
Non-Hispanic Black	35.2	55.5	9.3
Hispanic	31.6	59.6	8.7
Non-Hispanic Other	28.3	64.6	7.1

Table 4 shows asthma prevalence rates by the following categories: school year, school type, school level, gender, race/ethnicity, and DRG by the different levels of asthma severity. Due to the small number of reported students classified as having moderate persistent or severe persistent, this report groups them together, thus the asthma severity is reported in the following groups: Intermittent, mild persistent and moderate/severe persistent.

For each of the categories presented in Table 4, the proportion of severity level is greatest among those classified as having mild persistent asthma, followed by intermittent and lastly, by moderate or severe persistent asthma.

<sup>2</sup> National Heart, Lung, and Blood Institute. (2007). The Expert Panel Report 3: Guidelines for the Diagnosis and management of Asthma, National Asthma Education and Prevention Program. Retrieved from National Heart, Lung, and Blood Institute website <https://www.nhlbi.nih.gov/> Accessed on January 5, 2019.

Table 4. Asthma Severity by Various Demographic Characteristics, Connecticut Public and Private Schools, 2012 – 2014. (continued)

Demographic Characteristics	Intermittent (%)	Mild Persistent (%)	Moderate or Severe Persistent (%)
DRG			
A	25.7	64.3	10.0
B	26.8	67.6	5.7
C	28.0	65.1	6.9
D	29.8	62.8	7.4
E	24.4	70.3	5.2
F	26.1	66.4	7.5
G	31.4	59.8	8.8
H	30.4	61.2	8.4
I	33.3	57.4	9.4

Overall, the most predominant presentation of asthma severity is mild persistent (61.5%), followed by intermittent (30.4%), and lastly by moderate or severe persistent (8.0%) asthma. During the 3-year period, it has been consistently reported that most of those affected by asthma are classified as mild persistent asthma. However, data shows an increase in prevalence from 2012 (57.7%) to 2014 (64.2%) for mild persistent, while the reverse is shown for all other

severity classifications, from 33.8% in 2012 to 28.3% in 2014 among those with intermittent asthma; and from 8.4% in 2012 to 7.5% in 2014 for those with moderate or severe persistent asthma.

Students in the private school system are classified in greater proportion, 64.6%, as having mild persistent asthma when compared to those in the public school system, 61.3%.

The most predominant form of severity level is mild persistent, affecting students at the elementary (65.6%) school level the most, followed by middle (59.9%) and high (57.6%) school level. On the other hand, within a given asthma severity level, high school (34.1%) students are the most affected group with intermittent asthma, elementary (65.6%) with mild persistent and high school (8.3%) with moderate or severe persistent asthma.

Given the level of severity, and the increased likelihood for hospitalization or emergency department visit, subsequent analysis in this section will refer to those classified as having moderate or severe persistent asthma and its difference for each of the categories.

Prevalence of asthma among male and females are not much different within the same level of severity, it affects both groups in the same proportion. Moderate or severe persistent asthma is more prevalent in males (8.1%) than females (7.9%).

Moderate or severe persistent asthma is most prevalent among non-Hispanic black (9.3%), followed by Hispanics (8.7%). The least affected are non-Hispanic White (7.2%) and other non-Hispanic (7.1%).

Except for DRG A and E, data shows that moderate or severe persistent asthma prevalence rate is inversely proportional to a school's DRG classification, meaning the lower the DRG

classification, the higher the rate for asthma for each of the level of asthma severity. Coincidentally, prevalence rate is very close at each end of the DRG classification, DRG A with 10.0% and DRG I with 9.4%.



## E. Asthma Action Plan

Table 5. Percentage of Students with Asthma Having Asthma Action Plan (AAP) by Various Demographic Characteristics, Connecticut Public and Private Schools, 2012 to 2014

Demographic Characteristics	Has AAP (%)
<b>Total</b>	<b>10.6</b>
<b>School Year</b>	
2012	9.1
2013	11.3
2014	11.4
<b>School Type</b>	
Private	15.1
Public	10.2
<b>School Level</b>	
Elementary	13.1
Middle	10.1
High	8.1
<b>Gender</b>	
Male	10.5
Female	10.8
<b>Race/Ethnicity</b>	
Non-Hispanic White	10.3
Non-Hispanic Black	11.8
Hispanic	10.3
Non-Hispanic Other	9.3
<b>Asthma Severity</b>	
Intermittent	13.3
Mild Persistent	10.3
Moderate or Severe Persistent	23.8
<b>DRG</b>	
A	7.7
B	11.9
C	8.3
D	9.3
E	13.3
F	9.3
G	9.9
H	8.3
I	11.8

and other non-Hispanic (9.3%). Students with moderate or persistent asthma (23.8%) had the highest proportion of having their AAP, this proportion decreased by about one-half among

The Expert Panel, as well as the Centers for Disease Control and Prevention (CDC), recommends that each asthmatic patient have their own written Asthma Action Plan (AAP)<sup>3</sup>. The AAP is designed based on signs and symptoms and/or spirometry results. The AAP is a written plan that is mutually developed by the clinician and the patient in an effort to control asthma episodes and/or exacerbations. The plan lists all the medications with instructions on how and when to administer them to prevent episodes or during an exacerbation.

Overall, 10.6% of students with asthma were assessed as having an AAP. Data shows that the proportion of students having their AAP has increased every year. During 2012, 9.1% had their AAP, by 2014 that proportion rose to 11.4% (Table 5).

The proportion of students with asthma having their AAP was higher among those in private school (15.1%) than those in the public school (10.2%) system.

Given the school level, the higher the school level, the lower the proportion of students with AAP. Elementary school (13.1%) had the highest proportion of students with their AAP, followed by middle (10.1%) and high (8.1%) school level. The proportion of students with AAP among females (10.8%) was very similar to males (10.5%).

Non-Hispanic blacks had the highest proportion of students (11.8%) with AAP, followed by non-Hispanic white (10.3%) and Hispanics (10.3%),

<sup>3</sup> Centers for Disease Control and Prevention. (2009). Asthma Action Plan. Retrieved from Centers for Disease Control and Prevention website <http://www.cdc.gov/asthma/actionplan.html> Accessed on December 18, 2018

those with intermittent (13.3%) and mild persistent asthma (10.3%). When AAP was analyzed based on the DRG classification, it showed that DRG E (13.3%) had the greatest proportion of students with AAP, followed by DRG B (11.9%) and DRG I (11.8%). All other DRGs fell below the 10% level, ranging from 7.7% (DRG A) to 9.9% (DRG G). An implicit relationship between a school's DRG classification and proportion of students having an AAP could not be observed.

## F. Asthma Documentation and Health History

The SBASS survey requests for asthma documentation information as submitted in the health assessment record<sup>4</sup> (HAR). The HAR form is filled out by both, the child's parent/guardian and the clinician performing the physical examination, in their corresponding sections.

Table 6. Percentage of Students with Various Asthma Documentation and Health History, Connecticut Public and Private Schools, 2012-2014

	Yes (%)
<b>Asthma Documentation</b>	
Has Provider Diagnosis on HAR	82.6
Has Provider Medication Order	35.4
Has Self-Carry Medication Approval	9.3
Has Asthma Medication in School	30.9
Has Parental Note	35.0
Has Asthma Symptoms Observed	9.7
Has Other Asthma Documentation	4.6
<b>Health History (HAR Part I)</b>	
Problem breathing or coughing	22.9
Asthma treatment (past 3 years)	50.6

Table 6 provides the percentage of students with the different types of asthma documentation and asthma-related health history that was provided in their HAR to a school nurse. Approximately, four out of five students (82.6%) with asthma have their diagnosis documented in their HAR; one-third (35.4%) have a medication order in their HAR, 9.3% have self-carry medication approval; 30.9% have asthma medication in school; 35.0% have an asthma-related parent's note; 9.7% had asthma symptoms observed; and 4.6% have other form of asthma documentation in their HAR.

HAR part I is a section that is filled out by the student's parent/guardian. Approximately one out of every five students with asthma (22.9%) have been declared as having problems with

breathing or coughing by their parents/guardian, and half of asthma students (50.6%) have had and asthma treatment in the past 3 years.

<sup>4</sup> State of Connecticut Department of Education. (2018). Health Assessment Record. Retrieved from the Connecticut State Department of Education website <https://portal.ct.gov/SDE>. Accessed on January 5, 2019.

## G. School District Profile on Asthma

Table 7 tabulates school district level information on asthma prevalence, asthma severity and AAP. Statistics reflect data that was reported for 2012-2014 school calendar year, by each of the schools and grouped in their corresponding districts. Asthma prevalence rates were provided for the overall school district, school level, gender, and race/ethnicity groups. Certain information was censored at the school district level to ensure confidentiality of student information and provision of reliable rates. For asthma prevalence, "N/A" indicates that a prevalence estimate is not available because: the sample size for the denominator was < 30; or the Relative Standard Error (RSE) was > 0.3; or the information was not reported. For asthma severity, "N/A" indicates the percentage is not available because there were less than 20 cases with known asthma severity (i.e., excluding unclassified severity). For AAP, "N/A" indicates that percentage is not available because there were less than 20 students with asthma reported.

Table 7. School District Profile. Connecticut 2012-2014

School District	Achievement First Hartford Academy, Inc.	Amistad Academy District	Andover School District
<b>Asthma Prevalence</b>	<b>% (95% CI)</b>	<b>% (95% CI)</b>	<b>% (95% CI)</b>
Overall	19.9 (16.1 - 23.6)	14.6 (9.3 - 19.9)	10.4 (6.5 - 14.4)
Elementary School	16.3 (11.0 - 21.5)	15.9 (8.3 - 23.5)	N/A
Middle School	22.3 (15.8 - 28.8)	13.3 (6.0 - 20.6)	12.4 (6.5 - 18.3)
High School	23.5 (14.5 - 32.5)	N/A	N/A
Male	26.6 (20.8 - 32.4)	18.1 (10.1 - 26.1)	12.5 (6.8 - 18.2)
Female	11.9 (7.5 - 16.2)	N/A	N/A
Non-Hispanic White	N/A	N/A	8.0 (3.5 - 12.5)
Non-Hispanic Black	7.4 (4.7 - 10.1)	18.6 (11.0 - 26.1)	N/A
Hispanic	N/A	N/A	N/A
Non-Hispanic Other	N/A	N/A	N/A
<b>Asthma Severity</b>	<b>%</b>	<b>%</b>	<b>%</b>
Intermittent	37.3	N/A	N/A
Mild Persistent	47.5	N/A	N/A
Moderate or Severe Persistent	N/A	N/A	N/A
<b>Asthma Action Plan (AAP)</b>	<b>%</b>	<b>%</b>	<b>%</b>
Has AAP	N/A	N/A	0
School District	Ansonia School District	Area Cooperative Educational Services	Ashford School District
<b>Asthma Prevalence</b>	<b>% (95% CI)</b>	<b>% (95% CI)</b>	<b>% (95% CI)</b>
Overall	16.3 (14.8 - 17.8)	23.3 (21.2 - 25.5)	14.2 (10.0 - 18.5)
Elementary School	15.3 (12.7 - 17.9)	17.5 (13.0 - 21.9)	14.5 (8.3 - 20.6)
Middle School	18.8 (16.5 - 21.1)	25.0 (22.4 - 27.6)	14.0 (8.2 - 19.9)
High School	11.4 (8.5 - 14.4)	22.1 (14.1 - 30.1)	N/A
Male	18.5 (16.4 - 20.7)	24.6 (21.6 - 27.6)	18.4 (11.9 - 24.9)
Female	12.9 (10.9 - 14.9)	21.4 (18.2 - 24.6)	11.4 (5.4 - 17.5)
Non-Hispanic White	13.3 (11.2 - 15.4)	19.6 (15.8 - 23.4)	13.2 (8.0 - 18.5)
Non-Hispanic Black	17.1 (13.3 - 20.9)	26.6 (21.8 - 31.3)	N/A
Hispanic	13.8 (10.9 - 16.6)	18.2 (14.5 - 21.9)	N/A
Non-Hispanic Other	34.9 (23.1 - 46.7)	23.9 (12.5 - 35.2)	N/A
<b>Asthma Severity</b>	<b>%</b>	<b>%</b>	<b>%</b>
Intermittent	39.9	27.5	N/A
Mild Persistent	50.5	61.3	75.0
Moderate or Severe Persistent	9.5	11.3	N/A
<b>Asthma Action Plan (AAP)</b>	<b>%</b>	<b>%</b>	<b>%</b>
Has AAP	9.3	45.8	N/A
School District	Avon School District	Barkhamsted School District	Berlin School District
<b>Asthma Prevalence</b>	<b>% (95% CI)</b>	<b>% (95% CI)</b>	<b>% (95% CI)</b>
Overall	7.9 (6.8 - 9.1)	N/A	14.6 (12.9 - 16.2)
Elementary School	7.5 (6.0 - 9.0)	N/A	11.2 (8.1 - 14.3)
Middle School	5.9 (3.2 - 8.6)	N/A	14.4 (11.8 - 17.0)
High School	9.4 (7.4 - 11.4)	N/A	16.6 (13.9 - 19.4)
Male	8.0 (6.4 - 9.5)	N/A	16.2 (13.9 - 18.5)
Female	7.9 (6.4 - 9.5)	N/A	12.6 (10.3 - 14.8)
Non-Hispanic White	5.0 (3.6 - 6.5)	N/A	11.9 (10.1 - 13.8)
Non-Hispanic Black	22.6 (9.6 - 35.6)	N/A	N/A
Hispanic	N/A	N/A	N/A
Non-Hispanic Other	N/A	N/A	N/A
<b>Asthma Severity</b>	<b>%</b>	<b>%</b>	<b>%</b>
Intermittent	22.6	N/A	15.2
Mild Persistent	72.6	N/A	79.9
Moderate or Severe Persistent	N/A	N/A	N/A
<b>Asthma Action Plan (AAP)</b>	<b>%</b>	<b>%</b>	<b>%</b>
Has AAP	N/A	0	N/A

<sup>1</sup>N/A = Prevalence estimate not available if: the sample size for the denominator was < 30; or the Relative Standard Error (RSE) is > 0.3; or the information was not reported. <sup>2</sup>N/A = Percentage not available if there were less than 20 cases with known asthma severity (i.e., excluding unclassified severity). Percentage may not add up to 100% due to rounding; data from 2010 to 2011 only. <sup>3</sup>N/A = Percentage not available if there were less than 20 students with asthma reported.

Table 7. School District Profile. Connecticut 2012-2014 (Continued)

School District	Bethany School District	Bethel School District	Bloomfield School District
<b>Asthma Prevalence</b>	<b>% (95% CI)</b>	<b>% (95% CI)</b>	<b>% (95% CI)</b>
Overall	N/A	15.8 (14.2 - 17.4)	14.4 (12.8 - 16.1)
Elementary School	N/A	11.4 (8.9 - 13.9)	12.3 (10.3 - 14.3)
Middle School	N/A	19.9 (16.9 - 22.9)	20.3 (15.7 - 24.9)
High School	N/A	15.7 (13.0 - 18.4)	15.7 (12.1 - 19.2)
Male	N/A	15.2 (13.0 - 17.4)	16.6 (14.2 - 19.0)
Female	N/A	16.2 (13.9 - 18.6)	11.8 (9.6 - 14.0)
Non-Hispanic White	N/A	14.7 (12.3 - 17.2)	15.0 (10.3 - 19.7)
Non-Hispanic Black	N/A	N/A	12.0 (10.0 - 14.0)
Hispanic	N/A	10.0 (4.4 - 15.7)	N/A
Non-Hispanic Other	N/A	20.7 (9.3 - 32.2)	N/A
<b>Asthma Severity</b>	<b>%</b>	<b>%</b>	<b>%</b>
Intermittent	N/A	40.4	25.0
Mild Persistent	N/A	52.5	65.6
Moderate or Severe Persistent	N/A	N/A	9.4
<b>Asthma Action Plan (AAP)</b>	<b>%</b>	<b>%</b>	<b>%</b>
Has AAP	N/A	N/A	N/A
School District	Bolton School District	Bozrah School District	Branford School District
<b>Asthma Prevalence</b>	<b>% (95% CI)</b>	<b>% (95% CI)</b>	<b>% (95% CI)</b>
Overall	18.6 (15.4 - 21.7)	N/A	11.3 (9.8 - 12.9)
Elementary School	13.8 (8.3 - 19.3)	N/A	12.4 (9.2 - 15.7)
Middle School	16.3 (10.8 - 21.8)	N/A	12.6 (10.1 - 15.0)
High School	22.9 (17.8 - 28.1)	N/A	8.8 (6.3 - 11.2)
Male	23.0 (18.2 - 27.8)	N/A	12.2 (10.0 - 14.4)
Female	13.7 (9.7 - 17.7)	N/A	10.4 (8.3 - 12.5)
Non-Hispanic White	11.6 (7.7 - 15.4)	N/A	12.6 (10.2 - 14.9)
Non-Hispanic Black	N/A	N/A	N/A
Hispanic	N/A	N/A	11.3 (4.7 - 17.9)
Non-Hispanic Other	N/A	N/A	N/A
<b>Asthma Severity</b>	<b>%</b>	<b>%</b>	<b>%</b>
Intermittent	N/A	N/A	30.4
Mild Persistent	63.2	N/A	60.8
Moderate or Severe Persistent	N/A	N/A	N/A
<b>Asthma Action Plan (AAP)</b>	<b>%</b>	<b>%</b>	<b>%</b>
Has AAP	N/A	N/A	23.3
School District	Brass City Charter School District	Bridgeport Achievement First District	Bridgeport School District
<b>Asthma Prevalence</b>	<b>% (95% CI)</b>	<b>% (95% CI)</b>	<b>% (95% CI)</b>
Overall	33.0 (22.4 - 43.5)	14.9 (9.4 - 20.4)	15.9 (15.3 - 16.5)
Elementary School	33.0 (22.4 - 43.5)	N/A	13.9 (13.0 - 14.8)
Middle School	N/A	14.9 (9.4 - 20.4)	16.6 (15.5 - 17.7)
High School	N/A	N/A	18.1 (16.9 - 19.3)
Male	50.4 (33.0 - 67.8)	19.1 (10.4 - 27.7)	17.9 (17.0 - 18.8)
Female	22.7 (10.3 - 35.0)	N/A	14.2 (13.3 - 15.0)
Non-Hispanic White	N/A	N/A	16.4 (13.8 - 19.0)
Non-Hispanic Black	N/A	N/A	14.8 (13.6 - 16.0)
Hispanic	N/A	N/A	14.4 (13.5 - 15.4)
Non-Hispanic Other	N/A	N/A	22.9 (16.4 - 29.4)
<b>Asthma Severity</b>	<b>%</b>	<b>%</b>	<b>%</b>
Intermittent	N/A	N/A	43.8
Mild Persistent	86.7	N/A	46.1
Moderate or Severe Persistent	N/A	N/A	10.0
<b>Asthma Action Plan (AAP)</b>	<b>%</b>	<b>%</b>	<b>%</b>
Has AAP	N/A	N/A	12.9

<sup>1</sup>N/A = Prevalence estimate not available if: the sample size for the denominator was < 30; or the Relative Standard Error (RSE) is > 0.3; or the information was not reported. <sup>2</sup>N/A = Percentage not available if there were less than 20 cases with known asthma severity (i.e., excluding unclassified severity). Percentage may not add up to 100% due to rounding; data from 2010 to 2011 only. <sup>3</sup>N/A = Percentage not available if there were less than 20 students with asthma reported.

Table 7. School District Profile. Connecticut 2012-2014 (Continued)

School District	Bristol School District	Brookfield School District	Brooklyn School District
<b>Asthma Prevalence</b>	<b>% (95% CI)</b>	<b>% (95% CI)</b>	<b>% (95% CI)</b>
Overall	14.9 (13.9 - 15.8)	10.2 (8.9 - 11.5)	15.6 (12.6 - 18.6)
Elementary School	15.2 (13.5 - 16.9)	10.5 (8.3 - 12.6)	15.9 (11.5 - 20.2)
Middle School	18.1 (16.3 - 19.9)	12.7 (10.1 - 15.2)	15.3 (11.2 - 19.4)
High School	11.6 (10.1 - 13.0)	7.5 (5.5 - 9.5)	N/A
Male	16.5 (15.1 - 17.9)	10.8 (8.9 - 12.6)	16.3 (12.2 - 20.5)
Female	14.1 (12.7 - 15.4)	9.6 (7.8 - 11.4)	14.4 (10.1 - 18.6)
Non-Hispanic White	13.8 (12.6 - 15.0)	6.4 (4.9 - 7.8)	12.8 (9.6 - 16.1)
Non-Hispanic Black	26.2 (21.4 - 31.1)	N/A	N/A
Hispanic	15.3 (13.1 - 17.4)	N/A	N/A
Non-Hispanic Other	19.2 (13.9 - 24.5)	N/A	N/A
<b>Asthma Severity</b>	<b>%</b>	<b>%</b>	<b>%</b>
Intermittent	32.1	21.7	N/A
Mild Persistent	52.9	70.7	60.9
Moderate or Severe Persistent	15.0	N/A	N/A
<b>Asthma Action Plan (AAP)</b>	<b>%</b>	<b>%</b>	<b>%</b>
Has AAP	5.7	10.9	N/A
School District	Canaan School District	Canterbury School District	Canton School District
<b>Asthma Prevalence</b>	<b>% (95% CI)</b>	<b>% (95% CI)</b>	<b>% (95% CI)</b>
Overall	22.7 (10.3 - 35.1)	12.2 (8.5 - 16.0)	11.9 (10.0 - 13.9)
Elementary School	N/A	12.4 (6.5 - 18.2)	11.9 (8.2 - 15.5)
Middle School	N/A	12.1 (7.3 - 17.0)	10.4 (7.4 - 13.4)
High School	N/A	N/A	13.6 (10.2 - 17.1)
Male	N/A	11.2 (6.3 - 16.1)	13.5 (10.6 - 16.4)
Female	N/A	13.5 (7.7 - 19.3)	10.3 (7.7 - 12.9)
Non-Hispanic White	N/A	N/A	8.9 (6.5 - 11.4)
Non-Hispanic Black	N/A	N/A	N/A
Hispanic	N/A	N/A	N/A
Non-Hispanic Other	N/A	N/A	N/A
<b>Asthma Severity</b>	<b>%</b>	<b>%</b>	<b>%</b>
Intermittent	N/A	N/A	25.9
Mild Persistent	N/A	72.4	68.2
Moderate or Severe Persistent	N/A	N/A	N/A
<b>Asthma Action Plan (AAP)</b>	<b>%</b>	<b>%</b>	<b>%</b>
Has AAP	N/A	0	N/A
School District	Capitol Region Education Council	Chaplin School District	Cheshire School District
<b>Asthma Prevalence</b>	<b>% (95% CI)</b>	<b>% (95% CI)</b>	<b>% (95% CI)</b>
Overall	22.5 (20.9 - 24.2)	16.2 (9.9 - 22.6)	7.0 (6.3 - 7.8)
Elementary School	21.4 (18.7 - 24.1)	18.7 (9.5 - 27.9)	5.5 (4.2 - 6.8)
Middle School	24.8 (21.9 - 27.6)	N/A	7.0 (5.9 - 8.2)
High School	21.1 (18.1 - 24.2)	N/A	8.6 (7.0 - 10.2)
Male	24.3 (21.9 - 26.7)	21.0 (11.2 - 30.8)	7.6 (6.5 - 8.7)
Female	22.3 (20.0 - 24.7)	N/A	6.4 (5.3 - 7.4)
Non-Hispanic White	21.4 (18.1 - 24.6)	15.2 (8.6 - 21.9)	4.3 (3.6 - 5.0)
Non-Hispanic Black	20.9 (17.5 - 24.4)	N/A	N/A
Hispanic	23.0 (19.9 - 26.2)	N/A	N/A
Non-Hispanic Other	17.5 (11.4 - 23.6)	N/A	N/A
<b>Asthma Severity</b>	<b>%</b>	<b>%</b>	<b>%</b>
Intermittent	34.5	N/A	20.2
Mild Persistent	58.6	76.9	78.0
Moderate or Severe Persistent	6.8	N/A	N/A
<b>Asthma Action Plan (AAP)</b>	<b>%</b>	<b>%</b>	<b>%</b>
Has AAP	10.4	0	29.7

<sup>1</sup>N/A = Prevalence estimate not available if: the sample size for the denominator was < 30; or the Relative Standard Error (RSE) is > 0.3; or the information was not reported. <sup>2</sup>N/A = Percentage not available if there were less than 20 cases with known asthma severity (i.e., excluding unclassified severity). Percentage may not add up to 100% due to rounding; data from 2010 to 2011 only. <sup>3</sup>N/A = Percentage not available if there were less than 20 students with asthma reported.

Table 7. School District Profile. Connecticut 2012-2014 (Continued)

School District	Chester School District	Clinton School District	Colchester School District
<b>Asthma Prevalence</b>	<b>% (95% CI)</b>	<b>% (95% CI)</b>	<b>% (95% CI)</b>
Overall	8.6 (3.9 - 13.2)	12.1 (9.9 - 14.4)	12.9 (11.4 - 14.5)
Elementary School	N/A	12.1 (8.0 - 16.3)	9.4 (6.6 - 12.2)
Middle School	N/A	16.3 (12.1 - 20.4)	14.0 (11.3 - 16.6)
High School	N/A	7.6 (4.5 - 10.7)	14.1 (11.5 - 16.7)
Male	N/A	12.4 (9.2 - 15.5)	13.0 (10.7 - 15.2)
Female	N/A	11.7 (8.6 - 14.8)	12.9 (10.7 - 15.1)
Non-Hispanic White	N/A	10.3 (7.6 - 13.0)	13.3 (10.9 - 15.8)
Non-Hispanic Black	N/A	N/A	N/A
Hispanic	N/A	22.8 (12.3 - 33.2)	N/A
Non-Hispanic Other	N/A	N/A	N/A
<b>Asthma Severity</b>	<b>%</b>	<b>%</b>	<b>%</b>
Intermittent	N/A	55.0	26.4
Mild Persistent	N/A	40.0	66.4
Moderate or Severe Persistent	N/A	N/A	N/A
<b>Asthma Action Plan (AAP)</b>	<b>%</b>	<b>%</b>	<b>%</b>
Has AAP	N/A	36.5	N/A
School District	Colebrook School District	Columbia School District	Common Ground High School District
<b>Asthma Prevalence</b>	<b>% (95% CI)</b>	<b>% (95% CI)</b>	<b>% (95% CI)</b>
Overall	24.8 (14.6 - 35.0)	12.6 (8.8 - 16.3)	14.4 (8.4 - 20.3)
Elementary School	31.2 (16.5 - 45.8)	9.3 (4.3 - 14.3)	N/A
Middle School	N/A	15.0 (9.7 - 20.3)	N/A
High School	N/A	N/A	14.4 (8.4 - 20.3)
Male	37.0 (21.6 - 52.3)	13.2 (7.8 - 18.6)	22.3 (12.7 - 31.9)
Female	N/A	11.9 (6.7 - 17.1)	N/A
Non-Hispanic White	N/A	12.3 (8.4 - 16.2)	N/A
Non-Hispanic Black	N/A	N/A	N/A
Hispanic	N/A	N/A	N/A
Non-Hispanic Other	N/A	N/A	N/A
<b>Asthma Severity</b>	<b>%</b>	<b>%</b>	<b>%</b>
Intermittent	N/A	N/A	N/A
Mild Persistent	N/A	N/A	N/A
Moderate or Severe Persistent	N/A	N/A	N/A
<b>Asthma Action Plan (AAP)</b>	<b>%</b>	<b>%</b>	<b>%</b>
Has AAP	N/A	0	N/A
School District	Connecticut Technical High School District	Cooperative Educational Services	Cornwall School District
<b>Asthma Prevalence</b>	<b>% (95% CI)</b>	<b>% (95% CI)</b>	<b>% (95% CI)</b>
Overall	21.7 (20.8 - 22.6)	24.4 (19.8 - 29.1)	N/A
Elementary School	N/A	19.5 (13.2 - 25.7)	N/A
Middle School	N/A	30.8 (23.3 - 38.4)	N/A
High School	21.7 (20.8 - 22.6)	N/A	N/A
Male	21.0 (19.9 - 22.2)	26.2 (19.9 - 32.6)	N/A
Female	22.4 (21.0 - 23.9)	22.0 (14.9 - 29.0)	N/A
Non-Hispanic White	13.8 (12.5 - 15.0)	N/A	N/A
Non-Hispanic Black	19.8 (17.0 - 22.5)	32.2 (19.6 - 44.8)	N/A
Hispanic	18.5 (16.8 - 20.2)	19.6 (12.1 - 27.2)	N/A
Non-Hispanic Other	27.2 (17.7 - 36.7)	N/A	N/A
<b>Asthma Severity</b>	<b>%</b>	<b>%</b>	<b>%</b>
Intermittent	41.7	33.3	N/A
Mild Persistent	50.8	53.6	N/A
Moderate or Severe Persistent	7.5	N/A	N/A
<b>Asthma Action Plan (AAP)</b>	<b>%</b>	<b>%</b>	<b>%</b>
Has AAP	8.2	N/A	0

<sup>1</sup>N/A = Prevalence estimate not available if: the sample size for the denominator was < 30; or the Relative Standard Error (RSE) is > 0.3; or the information was not reported. <sup>2</sup>N/A = Percentage not available if there were less than 20 cases with known asthma severity (i.e., excluding unclassified severity). Percentage may not add up to 100% due to rounding; data from 2010 to 2011 only. <sup>3</sup>N/A = Percentage not available if there were less than 20 students with asthma reported.

Table 7. School District Profile. Connecticut 2012-2014 (Continued)

School District	Coventry School District	Cromwell School District	Danbury School District
<b>Asthma Prevalence</b>	<b>% (95% CI)</b>	<b>% (95% CI)</b>	<b>% (95% CI)</b>
Overall	12.8 (10.9 - 14.7)	15.6 (13.5 - 17.6)	13.0 (12.3 - 13.8)
Elementary School	15.5 (11.9 - 19.2)	21.4 (17.1 - 25.7)	15.6 (14.2 - 16.9)
Middle School	12.6 (9.4 - 15.9)	16.1 (12.8 - 19.4)	12.7 (11.3 - 14.0)
High School	10.3 (7.2 - 13.3)	9.9 (7.1 - 12.8)	10.1 (8.9 - 11.4)
Male	13.2 (10.4 - 16.0)	16.7 (13.9 - 19.6)	15.0 (13.8 - 16.1)
Female	12.4 (9.7 - 15.1)	14.3 (11.5 - 17.1)	11.0 (10.0 - 12.0)
Non-Hispanic White	12.9 (9.8 - 16.0)	15.2 (12.3 - 18.1)	10.6 (9.4 - 11.7)
Non-Hispanic Black	N/A	N/A	19.2 (15.6 - 22.8)
Hispanic	N/A	N/A	10.1 (8.9 - 11.2)
Non-Hispanic Other	N/A	N/A	9.6 (6.9 - 12.2)
<b>Asthma Severity</b>	<b>%</b>	<b>%</b>	<b>%</b>
Intermittent	N/A	23.6	29.9
Mild Persistent	72.0	72.7	63.5
Moderate or Severe Persistent	N/A	N/A	6.6
<b>Asthma Action Plan (AAP)</b>	<b>%</b>	<b>%</b>	<b>%</b>
Has AAP	N/A	12.7	11.9
School District	Darien School District	Deep River School District	Derby School District
<b>Asthma Prevalence</b>	<b>% (95% CI)</b>	<b>% (95% CI)</b>	<b>% (95% CI)</b>
Overall	10.1 (9.1 - 11.2)	10.1 (5.1 - 15.1)	17.0 (14.2 - 19.7)
Elementary School	12.2 (10.2 - 14.1)	10.1 (5.1 - 15.1)	22.6 (16.9 - 28.2)
Middle School	8.5 (6.9 - 10.1)	N/A	15.4 (10.7 - 20.0)
High School	9.8 (8.0 - 11.6)	N/A	14.0 (9.9 - 18.1)
Male	11.8 (10.2 - 13.4)	N/A	19.8 (15.7 - 23.9)
Female	8.5 (7.1 - 9.9)	N/A	17.4 (13.5 - 21.4)
Non-Hispanic White	8.0 (6.9 - 9.2)	N/A	8.5 (5.0 - 12.0)
Non-Hispanic Black	N/A	N/A	27.3 (15.9 - 38.7)
Hispanic	N/A	N/A	21.8 (13.8 - 29.9)
Non-Hispanic Other	N/A	N/A	N/A
<b>Asthma Severity</b>	<b>%</b>	<b>%</b>	<b>%</b>
Intermittent	19.3	N/A	27.8
Mild Persistent	79.4	N/A	64.9
Moderate or Severe Persistent	N/A	N/A	7.2
<b>Asthma Action Plan (AAP)</b>	<b>%</b>	<b>%</b>	<b>%</b>
Has AAP	N/A	N/A	15.0
School District	East Granby School District	East Haddam School District	East Hampton School District
<b>Asthma Prevalence</b>	<b>% (95% CI)</b>	<b>% (95% CI)</b>	<b>% (95% CI)</b>
Overall	11.1 (8.5 - 13.7)	11.6 (9.1 - 14.0)	12.6 (10.3 - 14.9)
Elementary School	13.1 (7.8 - 18.5)	13.8 (8.9 - 18.6)	6.9 (3.7 - 10.1)
Middle School	12.8 (8.3 - 17.3)	13.1 (8.4 - 17.8)	17.2 (12.8 - 21.6)
High School	7.6 (3.9 - 11.3)	8.9 (5.6 - 12.2)	12.9 (8.8 - 17.0)
Male	11.5 (7.8 - 15.1)	13.1 (9.5 - 16.7)	12.5 (9.3 - 15.8)
Female	10.7 (7.0 - 14.3)	10.3 (7.1 - 13.5)	12.1 (8.9 - 15.3)
Non-Hispanic White	10.0 (7.2 - 12.8)	11.8 (8.8 - 14.7)	10.4 (7.9 - 12.8)
Non-Hispanic Black	26.1 (11.4 - 40.7)	N/A	N/A
Hispanic	N/A	N/A	N/A
Non-Hispanic Other	N/A	N/A	N/A
<b>Asthma Severity</b>	<b>%</b>	<b>%</b>	<b>%</b>
Intermittent	N/A	N/A	N/A
Mild Persistent	84.1	61.8	71.4
Moderate or Severe Persistent	N/A	N/A	N/A
<b>Asthma Action Plan (AAP)</b>	<b>%</b>	<b>%</b>	<b>%</b>
Has AAP	N/A	N/A	N/A

<sup>1</sup>N/A = Prevalence estimate not available if: the sample size for the denominator was < 30; or the Relative Standard Error (RSE) is > 0.3; or the information was not reported. <sup>2</sup>N/A = Percentage not available if there were less than 20 cases with known asthma severity (i.e., excluding unclassified severity). Percentage may not add up to 100% due to rounding; data from 2010 to 2011 only. <sup>3</sup>N/A = Percentage not available if there were less than 20 students with asthma reported.



Table 7. School District Profile. Connecticut 2012-2014 (Continued)

School District	East Hartford School District	East Haven School District	East Lyme School District
<b>Asthma Prevalence</b>	<b>% (95% CI)</b>	<b>% (95% CI)</b>	<b>% (95% CI)</b>
Overall	19.5 (18.4 - 20.5)	13.1 (10.0 - 16.1)	10.8 (9.5 - 12.2)
Elementary School	22.1 (20.4 - 23.8)	N/A	10.3 (7.7 - 12.9)
Middle School	9.9 (8.5 - 11.3)	22.2 (16.3 - 28.0)	10.5 (8.2 - 12.9)
High School	27.8 (25.5 - 30.1)	5.0 (2.1 - 7.9)	11.5 (9.3 - 13.7)
Male	22.0 (20.5 - 23.5)	13.7 (9.5 - 17.9)	12.3 (10.3 - 14.4)
Female	16.0 (14.6 - 17.4)	12.3 (7.9 - 16.6)	9.7 (7.8 - 11.5)
Non-Hispanic White	13.2 (10.3 - 16.2)	N/A	10.2 (8.6 - 11.8)
Non-Hispanic Black	14.9 (12.9 - 16.9)	N/A	N/A
Hispanic	18.4 (16.7 - 20.1)	N/A	16.5 (7.2 - 25.9)
Non-Hispanic Other	18.4 (11.3 - 25.6)	N/A	10.4 (5.3 - 15.6)
<b>Asthma Severity</b>	<b>%</b>	<b>%</b>	<b>%</b>
Intermittent	29.5	59.0	19.8
Mild Persistent	61.1	N/A	72.5
Moderate or Severe Persistent	9.4	N/A	N/A
<b>Asthma Action Plan (AAP)</b>	<b>%</b>	<b>%</b>	<b>%</b>
Has AAP	4.1	N/A	N/A
School District	East Windsor School District	Eastern Connecticut Regional Edu	Eastford School District
<b>Asthma Prevalence</b>	<b>% (95% CI)</b>	<b>% (95% CI)</b>	<b>% (95% CI)</b>
Overall	16.5 (13.5 - 19.4)	21.2 (16.3 - 26.0)	11.9 (5.3 - 18.5)
Elementary School	17.6 (12.9 - 22.3)	N/A	N/A
Middle School	15.5 (10.2 - 20.8)	N/A	N/A
High School	15.8 (10.4 - 21.1)	22.0 (16.8 - 27.2)	N/A
Male	19.4 (15.0 - 23.8)	22.1 (14.8 - 29.5)	N/A
Female	14.4 (10.4 - 18.4)	22.8 (16.1 - 29.6)	N/A
Non-Hispanic White	11.6 (8.2 - 15.0)	16.3 (10.6 - 21.9)	N/A
Non-Hispanic Black	23.8 (11.5 - 36.1)	N/A	N/A
Hispanic	N/A	N/A	N/A
Non-Hispanic Other	N/A	N/A	N/A
<b>Asthma Severity</b>	<b>%</b>	<b>%</b>	<b>%</b>
Intermittent	N/A	43.1	N/A
Mild Persistent	70.8	48.3	N/A
Moderate or Severe Persistent	N/A	N/A	N/A
<b>Asthma Action Plan (AAP)</b>	<b>%</b>	<b>%</b>	<b>%</b>
Has AAP	N/A	29.9	N/A
School District	Easton School District	Education Connection	Ellington School District
<b>Asthma Prevalence</b>	<b>% (95% CI)</b>	<b>% (95% CI)</b>	<b>% (95% CI)</b>
Overall	8.6 (6.4 - 10.8)	N/A	13.1 (11.6 - 14.7)
Elementary School	11.3 (7.5 - 15.2)	N/A	8.0 (5.9 - 10.0)
Middle School	6.5 (3.9 - 9.0)	N/A	17.0 (14.1 - 19.9)
High School	N/A	N/A	14.6 (11.7 - 17.4)
Male	10.9 (7.6 - 14.2)	N/A	13.5 (11.3 - 15.6)
Female	5.7 (3.0 - 8.5)	N/A	12.5 (10.3 - 14.6)
Non-Hispanic White	6.4 (4.0 - 8.7)	N/A	12.7 (10.7 - 14.8)
Non-Hispanic Black	N/A	N/A	N/A
Hispanic	N/A	N/A	N/A
Non-Hispanic Other	N/A	N/A	N/A
<b>Asthma Severity</b>	<b>%</b>	<b>%</b>	<b>%</b>
Intermittent	N/A	N/A	16.1
Mild Persistent	82.2	N/A	73.5
Moderate or Severe Persistent	N/A	N/A	N/A
<b>Asthma Action Plan (AAP)</b>	<b>%</b>	<b>%</b>	<b>%</b>
Has AAP	N/A	0	N/A

<sup>1</sup>N/A = Prevalence estimate not available if: the sample size for the denominator was < 30; or the Relative Standard Error (RSE) is > 0.3; or the information was not reported. <sup>2</sup>N/A = Percentage not available if there were less than 20 cases with known asthma severity (i.e., excluding unclassified severity). Percentage may not add up to 100% due to rounding; data from 2010 to 2011 only. <sup>3</sup>N/A = Percentage not available if there were less than 20 students with asthma reported.

Table 7. School District Profile. Connecticut 2012-2014 (Continued)

School District	Elm City College Preparatory School District	Elm City Montessori School District	Enfield School District
<b>Asthma Prevalence</b>	<b>% (95% CI)</b>	<b>% (95% CI)</b>	<b>% (95% CI)</b>
Overall	19.5 (15.3 - 23.7)	N/A	15.8 (14.6 - 17.0)
Elementary School	23.4 (17.2 - 29.6)	N/A	14.5 (12.6 - 16.3)
Middle School	15.3 (9.8 - 20.8)	N/A	19.2 (16.8 - 21.5)
High School	N/A	N/A	13.8 (11.7 - 16.0)
Male	24.9 (18.1 - 31.8)	N/A	18.3 (16.5 - 20.1)
Female	13.7 (8.8 - 18.5)	N/A	13.4 (11.8 - 15.0)
Non-Hispanic White	N/A	N/A	14.1 (12.7 - 15.6)
Non-Hispanic Black	15.8 (10.3 - 21.3)	N/A	35.0 (27.7 - 42.3)
Hispanic	19.0 (8.4 - 29.6)	N/A	16.7 (12.9 - 20.4)
Non-Hispanic Other	N/A	N/A	11.7 (7.3 - 16.0)
<b>Asthma Severity</b>	<b>%</b>	<b>%</b>	<b>%</b>
Intermittent	N/A	N/A	22.7
Mild Persistent	66.0	N/A	71.5
Moderate or Severe Persistent	N/A	N/A	5.8
<b>Asthma Action Plan (AAP)</b>	<b>%</b>	<b>%</b>	<b>%</b>
Has AAP	73.1	0	N/A
School District	Essex School District	Explorations District	Fairfield School District
<b>Asthma Prevalence</b>	<b>% (95% CI)</b>	<b>% (95% CI)</b>	<b>% (95% CI)</b>
Overall	8.8 (4.7 - 13.0)	N/A	10.4 (9.6 - 11.1)
Elementary School	8.8 (4.7 - 13.0)	N/A	9.5 (8.3 - 10.7)
Middle School	N/A	N/A	9.3 (8.1 - 10.4)
High School	N/A	N/A	12.5 (11.1 - 13.9)
Male	12.4 (5.9 - 19.0)	N/A	11.7 (10.6 - 12.7)
Female	N/A	N/A	9.2 (8.3 - 10.2)
Non-Hispanic White	9.5 (4.9 - 14.0)	N/A	9.6 (8.8 - 10.5)
Non-Hispanic Black	N/A	N/A	26.8 (17.0 - 36.6)
Hispanic	N/A	N/A	12.1 (8.9 - 15.2)
Non-Hispanic Other	N/A	N/A	8.7 (4.9 - 12.4)
<b>Asthma Severity</b>	<b>%</b>	<b>%</b>	<b>%</b>
Intermittent	N/A	N/A	30.7
Mild Persistent	N/A	N/A	64.0
Moderate or Severe Persistent	N/A	N/A	5.3
<b>Asthma Action Plan (AAP)</b>	<b>%</b>	<b>%</b>	<b>%</b>
Has AAP	N/A	0	8.9
School District	Farmington School District	Franklin School District	Glastonbury School District
<b>Asthma Prevalence</b>	<b>% (95% CI)</b>	<b>% (95% CI)</b>	<b>% (95% CI)</b>
Overall	14.0 (12.7 - 15.3)	26.1 (17.3 - 34.9)	8.3 (7.6 - 9.0)
Elementary School	12.4 (10.2 - 14.5)	21.6 (10.3 - 32.9)	9.9 (8.2 - 11.5)
Middle School	16.4 (13.9 - 18.8)	31.3 (17.7 - 44.9)	6.4 (5.6 - 7.3)
High School	13.4 (11.3 - 15.6)	N/A	10.5 (9.0 - 12.0)
Male	15.2 (13.3 - 17.0)	30.4 (17.5 - 43.2)	8.9 (7.9 - 9.9)
Female	12.8 (11.0 - 14.6)	28.1 (15.1 - 41.0)	7.4 (6.5 - 8.4)
Non-Hispanic White	5.8 (4.6 - 6.9)	N/A	8.6 (7.7 - 9.6)
Non-Hispanic Black	29.5 (16.5 - 42.4)	N/A	16.5 (9.7 - 23.2)
Hispanic	21.8 (12.6 - 31.0)	N/A	10.6 (7.0 - 14.1)
Non-Hispanic Other	8.8 (4.7 - 12.9)	N/A	8.3 (5.7 - 10.9)
<b>Asthma Severity</b>	<b>%</b>	<b>%</b>	<b>%</b>
Intermittent	23.7	N/A	20.8
Mild Persistent	73.1	67.3	75.0
Moderate or Severe Persistent	N/A	N/A	N/A
<b>Asthma Action Plan (AAP)</b>	<b>%</b>	<b>%</b>	<b>%</b>
Has AAP	4.9	N/A	3.8

<sup>1</sup>N/A = Prevalence estimate not available if: the sample size for the denominator was < 30; or the Relative Standard Error (RSE) is > 0.3; or the information was not reported. <sup>2</sup>N/A = Percentage not available if there were less than 20 cases with known asthma severity (i.e., excluding unclassified severity). Percentage may not add up to 100% due to rounding; data from 2010 to 2011 only. <sup>3</sup>N/A = Percentage not available if there were less than 20 students with asthma reported.

Table 7. School District Profile. Connecticut 2012-2014 (Continued)

School District	Granby School District	Greenwich School District	Griswold School District
<b>Asthma Prevalence</b>	<b>% (95% CI)</b>	<b>% (95% CI)</b>	<b>% (95% CI)</b>
Overall	13.0 (11.1 - 14.8)	8.9 (8.1 - 9.6)	11.7 (9.9 - 13.5)
Elementary School	15.3 (11.1 - 19.4)	10.4 (9.1 - 11.7)	12.8 (9.5 - 16.2)
Middle School	15.2 (12.0 - 18.5)	11.0 (9.6 - 12.4)	12.5 (9.4 - 15.6)
High School	9.8 (7.3 - 12.3)	5.2 (4.2 - 6.2)	10.0 (7.2 - 12.8)
Male	13.5 (10.9 - 16.0)	10.0 (9.0 - 11.1)	13.3 (10.7 - 15.9)
Female	12.1 (9.6 - 14.7)	7.9 (6.9 - 8.9)	10.4 (8.0 - 12.8)
Non-Hispanic White	6.0 (4.5 - 7.4)	5.3 (4.5 - 6.1)	7.6 (5.1 - 10.2)
Non-Hispanic Black	N/A	21.6 (12.2 - 31.0)	N/A
Hispanic	N/A	12.4 (9.8 - 15.0)	N/A
Non-Hispanic Other	N/A	12.3 (7.6 - 17.0)	N/A
<b>Asthma Severity</b>	<b>%</b>	<b>%</b>	<b>%</b>
Intermittent	15.4	33.4	27.4
Mild Persistent	82.3	58.9	65.9
Moderate or Severe Persistent	N/A	7.7	N/A
<b>Asthma Action Plan (AAP)</b>	<b>%</b>	<b>%</b>	<b>%</b>
Has AAP	19.3	9.1	N/A
School District	Groton School District	Guilford School District	Hamden School District
<b>Asthma Prevalence</b>	<b>% (95% CI)</b>	<b>% (95% CI)</b>	<b>% (95% CI)</b>
Overall	14.2 (12.9 - 15.4)	11.0 (9.8 - 12.3)	10.5 (9.6 - 11.4)
Elementary School	14.9 (12.9 - 16.9)	7.4 (5.5 - 9.2)	14.4 (12.3 - 16.4)
Middle School	13.1 (11.0 - 15.3)	10.4 (8.4 - 12.4)	7.3 (6.2 - 8.4)
High School	14.3 (11.9 - 16.6)	15.1 (12.6 - 17.5)	12.9 (11.1 - 14.7)
Male	17.1 (15.2 - 19.0)	11.8 (10.0 - 13.6)	11.6 (10.3 - 12.9)
Female	11.3 (9.6 - 12.9)	11.5 (9.5 - 13.4)	10.0 (8.7 - 11.2)
Non-Hispanic White	10.6 (9.0 - 12.2)	6.8 (5.5 - 8.1)	8.2 (6.6 - 9.8)
Non-Hispanic Black	24.9 (19.1 - 30.6)	N/A	12.4 (10.3 - 14.5)
Hispanic	17.8 (14.2 - 21.4)	N/A	6.9 (4.6 - 9.2)
Non-Hispanic Other	12.5 (8.2 - 16.8)	N/A	9.2 (4.6 - 13.8)
<b>Asthma Severity</b>	<b>%</b>	<b>%</b>	<b>%</b>
Intermittent	34.0	18.7	26.4
Mild Persistent	59.5	77.5	64.4
Moderate or Severe Persistent	N/A	N/A	9.2
<b>Asthma Action Plan (AAP)</b>	<b>%</b>	<b>%</b>	<b>%</b>
Has AAP	N/A	21.1	32.8
School District	Hampton School District	Hartford School District	Hartland School District
<b>Asthma Prevalence</b>	<b>% (95% CI)</b>	<b>% (95% CI)</b>	<b>% (95% CI)</b>
Overall	23.8 (14.4 - 33.1)	23.5 (22.8 - 24.2)	13.3 (6.8 - 19.7)
Elementary School	23.8 (10.9 - 36.7)	26.0 (24.8 - 27.2)	N/A
Middle School	23.7 (10.2 - 37.2)	21.8 (20.6 - 23.0)	N/A
High School	N/A	22.5 (21.3 - 23.7)	N/A
Male	30.1 (17.4 - 42.8)	26.4 (25.4 - 27.4)	N/A
Female	N/A	20.9 (19.9 - 21.8)	N/A
Non-Hispanic White	24.8 (14.6 - 35.0)	14.0 (11.8 - 16.1)	N/A
Non-Hispanic Black	N/A	18.6 (17.2 - 20.0)	N/A
Hispanic	N/A	19.8 (18.7 - 21.0)	N/A
Non-Hispanic Other	N/A	17.6 (13.5 - 21.8)	N/A
<b>Asthma Severity</b>	<b>%</b>	<b>%</b>	<b>%</b>
Intermittent	N/A	35.5	N/A
Mild Persistent	N/A	55.8	N/A
Moderate or Severe Persistent	N/A	8.7	N/A
<b>Asthma Action Plan (AAP)</b>	<b>%</b>	<b>%</b>	<b>%</b>
Has AAP	N/A	9.5	N/A

<sup>1</sup>N/A = Prevalence estimate not available if: the sample size for the denominator was < 30; or the Relative Standard Error (RSE) is > 0.3; or the information was not reported. <sup>2</sup>N/A = Percentage not available if there were less than 20 cases with known asthma severity (i.e., excluding unclassified severity). Percentage may not add up to 100% due to rounding; data from 2010 to 2011 only. <sup>3</sup>N/A = Percentage not available if there were less than 20 students with asthma reported.

Table 7. School District Profile. Connecticut 2012-2014 (Continued)

School District	Hebron School District	Highville Charter School District	Integrated Day Charter School District
<b>Asthma Prevalence</b>	<b>% (95% CI)</b>	<b>% (95% CI)</b>	<b>% (95% CI)</b>
Overall	9.7 (6.0 - 13.4)	25.5 (18.3 - 32.7)	21.7 (16.0 - 27.5)
Elementary School	9.7 (6.0 - 13.4)	23.7 (14.2 - 33.3)	15.1 (8.1 - 22.2)
Middle School	N/A	27.6 (16.7 - 38.4)	28.4 (19.5 - 37.3)
High School	N/A	N/A	N/A
Male	11.4 (6.0 - 16.9)	28.0 (17.3 - 38.7)	26.4 (17.9 - 35.0)
Female	N/A	24.5 (14.7 - 34.4)	17.7 (10.1 - 25.4)
Non-Hispanic White	9.3 (5.5 - 13.1)	N/A	15.8 (9.3 - 22.4)
Non-Hispanic Black	N/A	12.7 (7.1 - 18.3)	N/A
Hispanic	N/A	N/A	N/A
Non-Hispanic Other	N/A	N/A	27.6 (12.3 - 42.9)
<b>Asthma Severity</b>	<b>%</b>	<b>%</b>	<b>%</b>
Intermittent	N/A	N/A	N/A
Mild Persistent	N/A	N/A	N/A
Moderate or Severe Persistent	N/A	N/A	N/A
<b>Asthma Action Plan (AAP)</b>	<b>%</b>	<b>%</b>	<b>%</b>
Has AAP	0	N/A	N/A
School District	Interdistrict School for Arts and Comm District	Jumoke Academy District	Kent School District
<b>Asthma Prevalence</b>	<b>% (95% CI)</b>	<b>% (95% CI)</b>	<b>% (95% CI)</b>
Overall	28.3 (22.5 - 34.1)	13.1 (9.8 - 16.4)	13.6 (8.3 - 18.9)
Elementary School	N/A	10.0 (5.6 - 14.5)	N/A
Middle School	28.3 (22.5 - 34.1)	15.5 (10.8 - 20.2)	15.5 (7.7 - 23.2)
High School	N/A	N/A	N/A
Male	25.2 (16.9 - 33.4)	12.6 (7.8 - 17.5)	18.9 (10.8 - 27.0)
Female	31.0 (22.9 - 39.1)	13.0 (8.6 - 17.4)	N/A
Non-Hispanic White	26.7 (13.7 - 39.6)	N/A	12.7 (6.5 - 19.0)
Non-Hispanic Black	N/A	8.1 (5.4 - 10.8)	N/A
Hispanic	25.2 (17.1 - 33.3)	N/A	N/A
Non-Hispanic Other	N/A	N/A	N/A
<b>Asthma Severity</b>	<b>%</b>	<b>%</b>	<b>%</b>
Intermittent	N/A	N/A	N/A
Mild Persistent	76.3	54.7	N/A
Moderate or Severe Persistent	N/A	N/A	N/A
<b>Asthma Action Plan (AAP)</b>	<b>%</b>	<b>%</b>	<b>%</b>
Has AAP	N/A	N/A	N/A
School District	Killingly School District	Learn	Lebanon School District
<b>Asthma Prevalence</b>	<b>% (95% CI)</b>	<b>% (95% CI)</b>	<b>% (95% CI)</b>
Overall	12.7 (11.2 - 14.1)	16.6 (14.2 - 19.1)	10.2 (8.1 - 12.4)
Elementary School	15.9 (13.4 - 18.5)	14.9 (12.3 - 17.6)	13.4 (8.7 - 18.1)
Middle School	14.5 (11.6 - 17.3)	37.1 (27.0 - 47.1)	11.8 (8.0 - 15.6)
High School	6.9 (5.0 - 8.9)	11.9 (6.5 - 17.4)	6.7 (3.8 - 9.5)
Male	13.7 (11.6 - 15.8)	19.1 (15.5 - 22.6)	14.0 (10.3 - 17.7)
Female	11.3 (9.4 - 13.3)	13.4 (10.3 - 16.6)	8.2 (5.5 - 11.0)
Non-Hispanic White	10.3 (8.3 - 12.4)	10.5 (7.4 - 13.7)	9.3 (7.0 - 11.6)
Non-Hispanic Black	N/A	26.9 (15.3 - 38.6)	N/A
Hispanic	N/A	13.5 (9.1 - 18.0)	N/A
Non-Hispanic Other	N/A	16.5 (9.1 - 23.9)	N/A
<b>Asthma Severity</b>	<b>%</b>	<b>%</b>	<b>%</b>
Intermittent	N/A	16.9	N/A
Mild Persistent	82.4	79.5	72.3
Moderate or Severe Persistent	N/A	N/A	N/A
<b>Asthma Action Plan (AAP)</b>	<b>%</b>	<b>%</b>	<b>%</b>
Has AAP	34.4	11.9	N/A

<sup>1</sup>N/A = Prevalence estimate not available if: the sample size for the denominator was < 30; or the Relative Standard Error (RSE) is > 0.3; or the information was not reported. <sup>2</sup>N/A = Percentage not available if there were less than 20 cases with known asthma severity (i.e., excluding unclassified severity). Percentage may not add up to 100% due to rounding; data from 2010 to 2011 only. <sup>3</sup>N/A = Percentage not available if there were less than 20 students with asthma reported.

Table 7. School District Profile. Connecticut 2012-2014 (Continued)

School District	Ledyard School District	Lisbon School District	Litchfield School District
<b>Asthma Prevalence</b>	<b>% (95% CI)</b>	<b>% (95% CI)</b>	<b>% (95% CI)</b>
Overall	9.7 (8.3 - 11.1)	14.5 (10.2 - 18.8)	9.2 (6.9 - 11.4)
Elementary School	7.1 (4.6 - 9.7)	14.2 (7.8 - 20.6)	N/A
Middle School	8.8 (6.5 - 11.1)	14.8 (8.9 - 20.6)	10.4 (6.6 - 14.2)
High School	11.9 (9.5 - 14.3)	N/A	10.0 (6.1 - 13.8)
Male	10.9 (8.8 - 13.1)	17.8 (11.5 - 24.2)	9.1 (6.0 - 12.2)
Female	8.3 (6.4 - 10.3)	13.2 (6.5 - 19.9)	9.9 (6.3 - 13.6)
Non-Hispanic White	6.1 (4.7 - 7.6)	15.7 (9.8 - 21.5)	10.6 (6.8 - 14.4)
Non-Hispanic Black	N/A	N/A	N/A
Hispanic	19.8 (12.0 - 27.5)	N/A	N/A
Non-Hispanic Other	10.0 (4.4 - 15.7)	N/A	N/A
<b>Asthma Severity</b>	<b>%</b>	<b>%</b>	<b>%</b>
Intermittent	30.1	N/A	N/A
Mild Persistent	64.1	N/A	69.4
Moderate or Severe Persistent	N/A	N/A	N/A
<b>Asthma Action Plan (AAP)</b>	<b>%</b>	<b>%</b>	<b>%</b>
Has AAP	N/A	N/A	N/A
School District	Madison School District	Manchester School District	Mansfield School District
<b>Asthma Prevalence</b>	<b>% (95% CI)</b>	<b>% (95% CI)</b>	<b>% (95% CI)</b>
Overall	12.0 (10.7 - 13.2)	20.5 (19.3 - 21.7)	13.2 (10.4 - 15.9)
Elementary School	6.8 (5.2 - 8.4)	20.1 (18.3 - 22.0)	11.0 (7.4 - 14.6)
Middle School	10.1 (8.1 - 12.2)	24.7 (22.3 - 27.2)	15.4 (11.2 - 19.6)
High School	18.8 (16.3 - 21.4)	17.1 (15.0 - 19.2)	N/A
Male	12.9 (11.1 - 14.6)	23.9 (22.1 - 25.6)	18.0 (13.6 - 22.4)
Female	11.1 (9.4 - 12.8)	17.1 (15.5 - 18.8)	8.9 (5.6 - 12.2)
Non-Hispanic White	11.0 (9.7 - 12.3)	16.3 (14.4 - 18.1)	7.8 (4.7 - 10.9)
Non-Hispanic Black	N/A	23.0 (20.1 - 25.9)	N/A
Hispanic	N/A	23.6 (20.9 - 26.3)	N/A
Non-Hispanic Other	14.3 (6.5 - 22.2)	13.3 (9.9 - 16.8)	N/A
<b>Asthma Severity</b>	<b>%</b>	<b>%</b>	<b>%</b>
Intermittent	30.7	34.2	N/A
Mild Persistent	64.3	58.9	73.3
Moderate or Severe Persistent	N/A	6.9	N/A
<b>Asthma Action Plan (AAP)</b>	<b>%</b>	<b>%</b>	<b>%</b>
Has AAP	7.5	4.1	N/A
School District	Marlborough School District	Meriden School District	Middletown School District
<b>Asthma Prevalence</b>	<b>% (95% CI)</b>	<b>% (95% CI)</b>	<b>% (95% CI)</b>
Overall	8.5 (4.8 - 12.1)	22.0 (20.8 - 23.1)	22.8 (21.3 - 24.3)
Elementary School	8.5 (4.8 - 12.1)	28.0 (25.9 - 30.2)	23.0 (20.6 - 25.4)
Middle School	N/A	17.3 (15.3 - 19.2)	22.1 (19.6 - 24.7)
High School	N/A	20.4 (18.5 - 22.3)	23.2 (20.5 - 25.9)
Male	10.7 (5.2 - 16.2)	23.8 (22.2 - 25.4)	25.1 (22.9 - 27.2)
Female	N/A	19.2 (17.7 - 20.8)	21.1 (19.1 - 23.2)
Non-Hispanic White	N/A	13.3 (11.3 - 15.2)	16.3 (14.5 - 18.2)
Non-Hispanic Black	N/A	24.0 (19.1 - 29.0)	23.7 (20.2 - 27.2)
Hispanic	N/A	16.2 (14.4 - 18.1)	19.2 (15.5 - 22.9)
Non-Hispanic Other	N/A	30.1 (19.8 - 40.4)	20.9 (15.7 - 26.0)
<b>Asthma Severity</b>	<b>%</b>	<b>%</b>	<b>%</b>
Intermittent	N/A	28.4	40.3
Mild Persistent	N/A	60.4	51.6
Moderate or Severe Persistent	N/A	11.2	8.1
<b>Asthma Action Plan (AAP)</b>	<b>%</b>	<b>%</b>	<b>%</b>
Has AAP	0	3.6	4.6

<sup>1</sup>N/A = Prevalence estimate not available if: the sample size for the denominator was < 30; or the Relative Standard Error (RSE) is > 0.3; or the information was not reported. <sup>2</sup>N/A = Percentage not available if there were less than 20 cases with known asthma severity (i.e., excluding unclassified severity). Percentage may not add up to 100% due to rounding; data from 2010 to 2011 only. <sup>3</sup>N/A = Percentage not available if there were less than 20 students with asthma reported.

Table 7. School District Profile. Connecticut 2012-2014 (Continued)

School District	Milford School District	Monroe School District	Montville School District
<b>Asthma Prevalence</b>	<b>% (95% CI)</b>	<b>% (95% CI)</b>	<b>% (95% CI)</b>
Overall	7.9 (7.1 - 8.6)	12.6 (11.3 - 14.0)	10.6 (9.1 - 12.1)
Elementary School	6.5 (5.4 - 7.7)	14.6 (11.9 - 17.3)	12.0 (9.1 - 14.8)
Middle School	10.8 (9.3 - 12.3)	14.2 (11.8 - 16.6)	11.5 (8.9 - 14.1)
High School	6.5 (5.2 - 7.7)	9.7 (7.8 - 11.7)	8.6 (6.2 - 10.9)
Male	9.1 (8.0 - 10.3)	15.2 (13.1 - 17.2)	12.3 (10.0 - 14.6)
Female	6.4 (5.4 - 7.4)	9.8 (8.1 - 11.5)	9.8 (7.7 - 11.9)
Non-Hispanic White	5.4 (4.5 - 6.2)	13.3 (11.4 - 15.3)	9.5 (7.3 - 11.8)
Non-Hispanic Black	12.5 (6.1 - 18.8)	N/A	N/A
Hispanic	12.3 (7.3 - 17.4)	15.1 (6.5 - 23.7)	N/A
Non-Hispanic Other	8.7 (4.5 - 13.0)	N/A	7.3 (3.3 - 11.2)
<b>Asthma Severity</b>	<b>%</b>	<b>%</b>	<b>%</b>
Intermittent	24.1	16.2	29.8
Mild Persistent	65.5	77.9	61.4
Moderate or Severe Persistent	10.4	N/A	N/A
<b>Asthma Action Plan (AAP)</b>	<b>%</b>	<b>%</b>	<b>%</b>
Has AAP	11.3	11.2	12.0
School District	Naugatuck School District	New Beginnings Inc Family Academy	New Britain School District
<b>Asthma Prevalence</b>	<b>% (95% CI)</b>	<b>% (95% CI)</b>	<b>% (95% CI)</b>
Overall	13.5 (12.4 - 14.7)	18.0 (12.9 - 23.0)	27.7 (26.6 - 28.8)
Elementary School	10.3 (8.4 - 12.2)	19.0 (12.7 - 25.4)	28.9 (27.2 - 30.7)
Middle School	10.5 (8.9 - 12.1)	15.9 (7.7 - 24.2)	31.9 (29.9 - 34.0)
High School	21.4 (18.8 - 24.0)	N/A	21.5 (19.7 - 23.4)
Male	14.8 (13.1 - 16.4)	20.7 (13.1 - 28.2)	29.7 (28.1 - 31.2)
Female	11.7 (10.1 - 13.3)	20.6 (12.4 - 28.9)	24.8 (23.2 - 26.3)
Non-Hispanic White	6.8 (5.5 - 8.2)	N/A	16.2 (13.8 - 18.6)
Non-Hispanic Black	18.1 (11.4 - 24.8)	25.5 (14.7 - 36.3)	31.7 (27.4 - 36.1)
Hispanic	10.4 (7.9 - 12.9)	N/A	20.4 (19.0 - 21.7)
Non-Hispanic Other	N/A	N/A	20.2 (14.3 - 26.1)
<b>Asthma Severity</b>	<b>%</b>	<b>%</b>	<b>%</b>
Intermittent	43.2	32.2	25.3
Mild Persistent	48.5	63.3	66.4
Moderate or Severe Persistent	8.3	N/A	8.3
<b>Asthma Action Plan (AAP)</b>	<b>%</b>	<b>%</b>	<b>%</b>
Has AAP	13.0	34.8	11.8
School District	New Canaan School District	New Fairfield School District	New Hartford School District
<b>Asthma Prevalence</b>	<b>% (95% CI)</b>	<b>% (95% CI)</b>	<b>% (95% CI)</b>
Overall	8.1 (7.1 - 9.1)	11.4 (9.9 - 12.9)	4.0 (2.0 - 6.0)
Elementary School	5.9 (4.4 - 7.4)	14.5 (11.1 - 17.9)	N/A
Middle School	8.7 (6.9 - 10.4)	11.0 (8.6 - 13.4)	N/A
High School	9.7 (7.8 - 11.6)	10.1 (7.9 - 12.3)	N/A
Male	10.2 (8.5 - 11.8)	12.5 (10.4 - 14.6)	N/A
Female	6.7 (5.4 - 8.0)	10.2 (8.1 - 12.2)	N/A
Non-Hispanic White	4.8 (3.6 - 6.0)	9.2 (7.4 - 11.0)	N/A
Non-Hispanic Black	N/A	N/A	N/A
Hispanic	N/A	21.5 (10.2 - 32.7)	N/A
Non-Hispanic Other	N/A	N/A	N/A
<b>Asthma Severity</b>	<b>%</b>	<b>%</b>	<b>%</b>
Intermittent	25.4	19.4	N/A
Mild Persistent	66.5	76.7	N/A
Moderate or Severe Persistent	N/A	N/A	N/A
<b>Asthma Action Plan (AAP)</b>	<b>%</b>	<b>%</b>	<b>%</b>
Has AAP	N/A	N/A	N/A

<sup>1</sup>N/A = Prevalence estimate not available if: the sample size for the denominator was < 30; or the Relative Standard Error (RSE) is > 0.3; or the information was not reported. <sup>2</sup>N/A = Percentage not available if there were less than 20 cases with known asthma severity (i.e., excluding unclassified severity). Percentage may not add up to 100% due to rounding; data from 2010 to 2011 only. <sup>3</sup>N/A = Percentage not available if there were less than 20 students with asthma reported.

Table 7. School District Profile. Connecticut 2012-2014 (Continued)

School District	New Haven School District	New London School District	New Milford School District
<b>Asthma Prevalence</b>	<b>% (95% CI)</b>	<b>% (95% CI)</b>	<b>% (95% CI)</b>
Overall	14.7 (14.1 - 15.3)	18.2 (16.5 - 19.9)	11.7 (10.5 - 12.8)
Elementary School	16.4 (15.4 - 17.5)	18.0 (15.3 - 20.7)	10.3 (8.2 - 12.5)
Middle School	17.1 (15.9 - 18.2)	22.5 (19.1 - 25.9)	15.3 (13.1 - 17.5)
High School	10.3 (9.3 - 11.2)	14.8 (12.1 - 17.4)	9.2 (7.5 - 10.9)
Male	16.3 (15.4 - 17.2)	21.3 (18.8 - 23.8)	13.1 (11.4 - 14.8)
Female	13.1 (12.3 - 13.9)	15.7 (13.4 - 18.0)	10.5 (8.9 - 12.1)
Non-Hispanic White	11.8 (9.7 - 13.9)	14.8 (10.7 - 18.9)	9.8 (8.4 - 11.1)
Non-Hispanic Black	14.8 (13.7 - 16.0)	21.0 (17.0 - 25.0)	N/A
Hispanic	15.8 (14.5 - 17.0)	17.8 (15.2 - 20.4)	9.2 (5.3 - 13.2)
Non-Hispanic Other	38.0 (25.5 - 50.5)	13.9 (6.9 - 20.9)	N/A
<b>Asthma Severity</b>	<b>%</b>	<b>%</b>	<b>%</b>
Intermittent	35.6	23.0	32.6
Mild Persistent	52.4	67.0	60.2
Moderate or Severe Persistent	12.0	10.0	7.2
<b>Asthma Action Plan (AAP)</b>	<b>%</b>	<b>%</b>	<b>%</b>
Has AAP	31.9	6.5	N/A
School District	Newington School District	Newtown School District	Norfolk School District
<b>Asthma Prevalence</b>	<b>% (95% CI)</b>	<b>% (95% CI)</b>	<b>% (95% CI)</b>
Overall	19.4 (17.9 - 21.0)	8.2 (7.2 - 9.3)	N/A
Elementary School	19.0 (15.7 - 22.4)	6.1 (4.6 - 7.6)	N/A
Middle School	23.2 (20.5 - 25.8)	10.4 (8.4 - 12.5)	N/A
High School	16.1 (13.9 - 18.4)	8.6 (6.8 - 10.5)	N/A
Male	20.7 (18.5 - 22.9)	9.0 (7.5 - 10.5)	N/A
Female	18.1 (16.0 - 20.2)	8.3 (6.7 - 9.9)	N/A
Non-Hispanic White	18.1 (16.2 - 19.9)	8.3 (7.1 - 9.4)	N/A
Non-Hispanic Black	27.5 (19.6 - 35.4)	N/A	N/A
Hispanic	21.9 (17.9 - 25.9)	N/A	N/A
Non-Hispanic Other	18.4 (14.1 - 22.8)	N/A	N/A
<b>Asthma Severity</b>	<b>%</b>	<b>%</b>	<b>%</b>
Intermittent	78.4	30.3	N/A
Mild Persistent	N/A	64.0	N/A
Moderate or Severe Persistent	15.7	N/A	N/A
<b>Asthma Action Plan (AAP)</b>	<b>%</b>	<b>%</b>	<b>%</b>
Has AAP	N/A	24.2	N/A
School District	North Branford School District	North Canaan School District	North Haven School District
<b>Asthma Prevalence</b>	<b>% (95% CI)</b>	<b>% (95% CI)</b>	<b>% (95% CI)</b>
Overall	11.5 (9.8 - 13.3)	14.9 (9.7 - 20.1)	11.0 (9.7 - 12.3)
Elementary School	12.0 (8.5 - 15.6)	12.7 (5.7 - 19.7)	9.0 (6.8 - 11.1)
Middle School	11.6 (8.8 - 14.4)	16.9 (9.4 - 24.5)	14.4 (11.9 - 16.8)
High School	11.2 (8.3 - 14.0)	N/A	9.6 (7.6 - 11.5)
Male	11.5 (9.0 - 13.9)	16.1 (8.4 - 23.8)	12.7 (10.7 - 14.6)
Female	11.3 (8.9 - 13.8)	14.8 (7.7 - 22.0)	9.0 (7.3 - 10.6)
Non-Hispanic White	9.1 (7.3 - 10.9)	17.6 (10.4 - 24.8)	8.4 (6.8 - 10.0)
Non-Hispanic Black	N/A	N/A	N/A
Hispanic	N/A	N/A	N/A
Non-Hispanic Other	N/A	N/A	N/A
<b>Asthma Severity</b>	<b>%</b>	<b>%</b>	<b>%</b>
Intermittent	33.9	N/A	36.3
Mild Persistent	60.9	N/A	60.2
Moderate or Severe Persistent	N/A	N/A	N/A
<b>Asthma Action Plan (AAP)</b>	<b>%</b>	<b>%</b>	<b>%</b>
Has AAP	31.2	N/A	17.8

<sup>1</sup>N/A = Prevalence estimate not available if: the sample size for the denominator was < 30; or the Relative Standard Error (RSE) is > 0.3; or the information was not reported. <sup>2</sup>N/A = Percentage not available if there were less than 20 cases with known asthma severity (i.e., excluding unclassified severity). Percentage may not add up to 100% due to rounding; data from 2010 to 2011 only. <sup>3</sup>N/A = Percentage not available if there were less than 20 students with asthma reported.

Table 7. School District Profile. Connecticut 2012-2014 (Continued)

School District	North Stonington School District	Norwalk School District	Norwich Free Academy District
<b>Asthma Prevalence</b>	<b>% (95% CI)</b>	<b>% (95% CI)</b>	<b>% (95% CI)</b>
Overall	12.9 (9.9 - 15.8)	14.4 (13.6 - 15.2)	16.6 (14.9 - 18.4)
Elementary School	14.7 (9.3 - 20.1)	17.1 (15.6 - 18.5)	N/A
Middle School	7.3 (3.3 - 11.3)	14.3 (12.9 - 15.8)	N/A
High School	16.9 (10.9 - 22.8)	11.8 (10.5 - 13.1)	16.6 (14.9 - 18.4)
Male	13.9 (9.7 - 18.2)	18.0 (16.7 - 19.2)	16.9 (14.4 - 19.5)
Female	14.5 (9.3 - 19.6)	10.9 (9.9 - 11.9)	16.0 (13.6 - 18.4)
Non-Hispanic White	10.4 (7.2 - 13.7)	10.7 (9.3 - 12.1)	17.1 (14.2 - 19.9)
Non-Hispanic Black	N/A	12.6 (10.7 - 14.6)	23.8 (17.5 - 30.1)
Hispanic	N/A	12.0 (10.7 - 13.3)	7.2 (3.1 - 11.2)
Non-Hispanic Other	N/A	14.3 (10.1 - 18.6)	10.5 (5.5 - 15.6)
<b>Asthma Severity</b>	<b>%</b>	<b>%</b>	<b>%</b>
Intermittent	N/A	40.4	36.6
Mild Persistent	75.0	53.1	53.8
Moderate or Severe Persistent	N/A	6.6	N/A
<b>Asthma Action Plan (AAP)</b>	<b>%</b>	<b>%</b>	<b>%</b>
Has AAP	N/A	3.5	7.0
School District	Norwich School District	Odyssey Community School District	Old Saybrook School District
<b>Asthma Prevalence</b>	<b>% (95% CI)</b>	<b>% (95% CI)</b>	<b>% (95% CI)</b>
Overall	17.6 (16.2 - 19.0)	18.0 (12.9 - 23.2)	14.6 (11.8 - 17.4)
Elementary School	18.2 (16.4 - 20.1)	13.7 (7.3 - 20.1)	17.6 (11.5 - 23.7)
Middle School	16.9 (14.7 - 19.0)	22.5 (14.6 - 30.4)	17.0 (12.1 - 21.8)
High School	N/A	N/A	10.5 (6.6 - 14.4)
Male	20.5 (18.4 - 22.6)	18.4 (11.3 - 25.5)	17.3 (13.1 - 21.6)
Female	14.4 (12.5 - 16.3)	17.6 (10.2 - 25.0)	12.0 (8.4 - 15.6)
Non-Hispanic White	11.7 (9.6 - 13.9)	14.6 (7.3 - 22.0)	12.4 (8.8 - 16.0)
Non-Hispanic Black	22.4 (17.5 - 27.3)	33.3 (19.1 - 47.6)	N/A
Hispanic	15.6 (12.7 - 18.5)	N/A	N/A
Non-Hispanic Other	10.7 (7.2 - 14.1)	N/A	N/A
<b>Asthma Severity</b>	<b>%</b>	<b>%</b>	<b>%</b>
Intermittent	28.3	N/A	N/A
Mild Persistent	57.8	65.6	77.0
Moderate or Severe Persistent	13.8	N/A	N/A
<b>Asthma Action Plan (AAP)</b>	<b>%</b>	<b>%</b>	<b>%</b>
Has AAP	10.4	N/A	N/A
School District	Orange School District	Oxford School District	Plainfield School District
<b>Asthma Prevalence</b>	<b>% (95% CI)</b>	<b>% (95% CI)</b>	<b>% (95% CI)</b>
Overall	4.1 (2.5 - 5.7)	11.3 (9.6 - 13.0)	14.6 (12.8 - 16.3)
Elementary School	5.9 (3.6 - 8.2)	4.6 (2.3 - 6.9)	12.4 (9.4 - 15.3)
Middle School	N/A	9.0 (6.6 - 11.5)	16.8 (13.8 - 19.9)
High School	N/A	18.8 (15.2 - 22.5)	14.1 (11.2 - 17.1)
Male	5.8 (3.1 - 8.5)	12.7 (10.1 - 15.2)	15.2 (12.7 - 17.7)
Female	N/A	9.9 (7.6 - 12.2)	13.5 (11.2 - 15.9)
Non-Hispanic White	N/A	8.1 (6.1 - 10.1)	5.9 (4.6 - 7.2)
Non-Hispanic Black	N/A	N/A	N/A
Hispanic	N/A	N/A	N/A
Non-Hispanic Other	N/A	N/A	N/A
<b>Asthma Severity</b>	<b>%</b>	<b>%</b>	<b>%</b>
Intermittent	N/A	41.1	32.4
Mild Persistent	N/A	49.5	58.9
Moderate or Severe Persistent	N/A	N/A	N/A
<b>Asthma Action Plan (AAP)</b>	<b>%</b>	<b>%</b>	<b>%</b>
Has AAP	N/A	21.2	N/A

<sup>1</sup>N/A = Prevalence estimate not available if: the sample size for the denominator was < 30; or the Relative Standard Error (RSE) is > 0.3; or the information was not reported. <sup>2</sup>N/A = Percentage not available if there were less than 20 cases with known asthma severity (i.e., excluding unclassified severity). Percentage may not add up to 100% due to rounding; data from 2010 to 2011 only. <sup>3</sup>N/A = Percentage not available if there were less than 20 students with asthma reported.



Table 7. School District Profile. Connecticut 2012-2014 (Continued)

School District	Plainville School District	Plymouth School District	Pomfret School District
<b>Asthma Prevalence</b>	<b>% (95% CI)</b>	<b>% (95% CI)</b>	<b>% (95% CI)</b>
Overall	15.2 (13.4 - 16.9)	14.2 (12.1 - 16.3)	8.7 (5.1 - 12.2)
Elementary School	16.5 (13.3 - 19.8)	16.7 (12.4 - 20.9)	N/A
Middle School	13.4 (10.6 - 16.3)	14.2 (10.8 - 17.7)	9.8 (5.2 - 14.4)
High School	15.6 (12.6 - 18.7)	12.1 (8.7 - 15.5)	N/A
Male	17.4 (14.7 - 20.0)	15.2 (12.2 - 18.2)	10.8 (5.2 - 16.3)
Female	14.2 (11.7 - 16.7)	13.9 (10.8 - 16.9)	N/A
Non-Hispanic White	13.1 (10.9 - 15.3)	8.3 (6.0 - 10.7)	N/A
Non-Hispanic Black	N/A	N/A	N/A
Hispanic	22.3 (15.2 - 29.3)	N/A	N/A
Non-Hispanic Other	32.8 (18.7 - 46.9)	N/A	N/A
<b>Asthma Severity</b>	<b>%</b>	<b>%</b>	<b>%</b>
Intermittent	30.2	16.4	N/A
Mild Persistent	65.8	78.1	N/A
Moderate or Severe Persistent	N/A	N/A	N/A
<b>Asthma Action Plan (AAP)</b>	<b>%</b>	<b>%</b>	<b>%</b>
Has AAP	15.2	N/A	0
School District	Portland School District	Preston School District	Putnam School District
<b>Asthma Prevalence</b>	<b>% (95% CI)</b>	<b>% (95% CI)</b>	<b>% (95% CI)</b>
Overall	15.5 (13.0 - 17.9)	6.5 (3.5 - 9.4)	18.3 (15.6 - 21.0)
Elementary School	22.9 (17.5 - 28.2)	N/A	24.0 (19.1 - 29.0)
Middle School	13.5 (9.9 - 17.0)	N/A	18.7 (14.2 - 23.1)
High School	11.7 (8.0 - 15.5)	N/A	10.0 (5.9 - 14.0)
Male	17.0 (13.5 - 20.5)	N/A	22.5 (18.3 - 26.8)
Female	13.7 (10.4 - 16.9)	N/A	15.8 (12.2 - 19.5)
Non-Hispanic White	14.0 (11.3 - 16.7)	6.1 (3.0 - 9.2)	12.2 (9.4 - 15.0)
Non-Hispanic Black	N/A	N/A	N/A
Hispanic	N/A	N/A	N/A
Non-Hispanic Other	N/A	N/A	N/A
<b>Asthma Severity</b>	<b>%</b>	<b>%</b>	<b>%</b>
Intermittent	N/A	N/A	26.5
Mild Persistent	87.7	N/A	59.3
Moderate or Severe Persistent	N/A	N/A	N/A
<b>Asthma Action Plan (AAP)</b>	<b>%</b>	<b>%</b>	<b>%</b>
Has AAP	N/A	N/A	N/A
School District	Redding School District	Regional School District 01	Regional School District 04
<b>Asthma Prevalence</b>	<b>% (95% CI)</b>	<b>% (95% CI)</b>	<b>% (95% CI)</b>
Overall	8.8 (6.6 - 10.9)	14.4 (10.5 - 18.2)	14.1 (11.5 - 16.7)
Elementary School	6.3 (3.4 - 9.3)	N/A	N/A
Middle School	10.4 (7.4 - 13.4)	N/A	15.9 (12.8 - 19.0)
High School	N/A	14.4 (10.5 - 18.2)	7.7 (3.5 - 11.9)
Male	11.2 (7.9 - 14.6)	10.2 (5.3 - 15.1)	17.2 (13.2 - 21.3)
Female	6.5 (3.8 - 9.1)	18.0 (12.2 - 23.9)	10.7 (7.4 - 13.9)
Non-Hispanic White	7.5 (5.3 - 9.6)	14.1 (10.0 - 18.1)	14.1 (10.1 - 18.1)
Non-Hispanic Black	N/A	N/A	N/A
Hispanic	N/A	N/A	N/A
Non-Hispanic Other	N/A	N/A	N/A
<b>Asthma Severity</b>	<b>%</b>	<b>%</b>	<b>%</b>
Intermittent	N/A	N/A	N/A
Mild Persistent	76.2	67.7	68.1
Moderate or Severe Persistent	N/A	N/A	N/A
<b>Asthma Action Plan (AAP)</b>	<b>%</b>	<b>%</b>	<b>%</b>
Has AAP	N/A	N/A	N/A

<sup>1</sup>N/A = Prevalence estimate not available if: the sample size for the denominator was < 30; or the Relative Standard Error (RSE) is > 0.3; or the information was not reported. <sup>2</sup>N/A = Percentage not available if there were less than 20 cases with known asthma severity (i.e., excluding unclassified severity). Percentage may not add up to 100% due to rounding; data from 2010 to 2011 only. <sup>3</sup>N/A = Percentage not available if there were less than 20 students with asthma reported.

Table 7. School District Profile. Connecticut 2012-2014 (Continued)

School District	Regional School District 05	Regional School District 06	Regional School District 07
<b>Asthma Prevalence</b>	<b>% (95% CI)</b>	<b>% (95% CI)</b>	<b>% (95% CI)</b>
Overall	7.9 (6.8 - 9.0)	5.3 (3.7 - 6.8)	8.7 (7.0 - 10.4)
Elementary School	N/A	N/A	N/A
Middle School	8.6 (7.0 - 10.2)	3.2 (1.3 - 5.0)	10.8 (8.2 - 13.5)
High School	7.2 (5.7 - 8.7)	7.8 (4.8 - 10.8)	6.6 (4.5 - 8.7)
Male	8.4 (6.8 - 9.9)	5.9 (3.5 - 8.3)	9.9 (7.3 - 12.5)
Female	7.3 (5.8 - 8.8)	5.4 (3.1 - 7.7)	7.6 (5.4 - 9.9)
Non-Hispanic White	6.5 (5.2 - 7.7)	4.6 (3.0 - 6.1)	8.2 (6.2 - 10.2)
Non-Hispanic Black	N/A	N/A	N/A
Hispanic	N/A	N/A	N/A
Non-Hispanic Other	N/A	N/A	N/A
<b>Asthma Severity</b>	<b>%</b>	<b>%</b>	<b>%</b>
Intermittent	N/A	N/A	N/A
Mild Persistent	80.9	N/A	68.2
Moderate or Severe Persistent	N/A	N/A	N/A
<b>Asthma Action Plan (AAP)</b>	<b>%</b>	<b>%</b>	<b>%</b>
Has AAP	16.9	48.8	41.3
School District	Regional School District 08	Regional School District 09	Regional School District 10
<b>Asthma Prevalence</b>	<b>% (95% CI)</b>	<b>% (95% CI)</b>	<b>% (95% CI)</b>
Overall	10.6 (9.1 - 12.0)	11.3 (8.5 - 14.0)	9.0 (7.7 - 10.3)
Elementary School	N/A	N/A	9.9 (7.6 - 12.2)
Middle School	11.4 (9.3 - 13.5)	N/A	5.2 (3.5 - 7.0)
High School	9.7 (7.7 - 11.7)	11.3 (8.5 - 14.0)	12.0 (9.3 - 14.6)
Male	12.6 (10.4 - 14.7)	11.3 (7.4 - 15.2)	9.5 (7.6 - 11.3)
Female	8.0 (6.1 - 9.8)	10.4 (6.7 - 14.1)	9.4 (7.4 - 11.4)
Non-Hispanic White	10.2 (8.1 - 12.3)	9.6 (6.9 - 12.3)	9.4 (8.0 - 10.9)
Non-Hispanic Black	N/A	N/A	N/A
Hispanic	N/A	N/A	N/A
Non-Hispanic Other	N/A	N/A	N/A
<b>Asthma Severity</b>	<b>%</b>	<b>%</b>	<b>%</b>
Intermittent	32.0	N/A	N/A
Mild Persistent	53.0	71.9	80.2
Moderate or Severe Persistent	N/A	N/A	N/A
<b>Asthma Action Plan (AAP)</b>	<b>%</b>	<b>%</b>	<b>%</b>
Has AAP	10.9	N/A	N/A
School District	Regional School District 11	Regional School District 12	Regional School District 13
<b>Asthma Prevalence</b>	<b>% (95% CI)</b>	<b>% (95% CI)</b>	<b>% (95% CI)</b>
Overall	12.7 (8.9 - 16.5)	11.3 (7.8 - 14.9)	15.4 (13.5 - 17.4)
Elementary School	N/A	9.2 (4.8 - 13.7)	11.1 (8.2 - 14.0)
Middle School	12.3 (7.5 - 17.1)	15.1 (6.5 - 23.7)	15.6 (12.4 - 18.7)
High School	13.4 (7.3 - 19.5)	12.5 (5.3 - 19.7)	19.9 (16.1 - 23.7)
Male	15.2 (9.6 - 20.9)	18.0 (11.9 - 24.0)	18.1 (15.3 - 20.9)
Female	12.0 (6.7 - 17.4)	N/A	14.3 (11.5 - 17.1)
Non-Hispanic White	10.9 (7.1 - 14.7)	12.4 (8.1 - 16.7)	12.8 (10.9 - 14.7)
Non-Hispanic Black	N/A	N/A	N/A
Hispanic	N/A	N/A	N/A
Non-Hispanic Other	N/A	N/A	23.7 (10.9 - 36.5)
<b>Asthma Severity</b>	<b>%</b>	<b>%</b>	<b>%</b>
Intermittent	N/A	44.4	31.6
Mild Persistent	N/A	53.7	60.9
Moderate or Severe Persistent	N/A	N/A	N/A
<b>Asthma Action Plan (AAP)</b>	<b>%</b>	<b>%</b>	<b>%</b>
Has AAP	N/A	N/A	N/A

<sup>1</sup>N/A = Prevalence estimate not available if: the sample size for the denominator was < 30; or the Relative Standard Error (RSE) is > 0.3; or the information was not reported. <sup>2</sup>N/A = Percentage not available if there were less than 20 cases with known asthma severity (i.e., excluding unclassified severity). Percentage may not add up to 100% due to rounding; data from 2010 to 2011 only. <sup>3</sup>N/A = Percentage not available if there were less than 20 students with asthma reported.

Table 7. School District Profile. Connecticut 2012-2014 (Continued)

School District	Regional School District 14	Regional School District 15	Regional School District 16
<b>Asthma Prevalence</b>	<b>% (95% CI)</b>	<b>% (95% CI)</b>	<b>% (95% CI)</b>
Overall	12.2 (10.5 - 13.9)	11.8 (10.4 - 13.2)	9.9 (8.4 - 11.4)
Elementary School	10.0 (7.3 - 12.7)	9.0 (6.7 - 11.3)	10.5 (7.7 - 13.4)
Middle School	15.2 (11.6 - 18.8)	14.2 (11.8 - 16.6)	8.2 (5.9 - 10.4)
High School	12.0 (9.4 - 14.7)	11.1 (8.6 - 13.5)	11.2 (8.5 - 13.8)
Male	14.2 (11.5 - 16.8)	13.9 (11.8 - 16.0)	10.1 (7.9 - 12.2)
Female	11.1 (8.7 - 13.4)	9.7 (7.9 - 11.6)	9.7 (7.6 - 11.8)
Non-Hispanic White	7.5 (6.0 - 9.0)	9.8 (8.1 - 11.4)	7.9 (5.9 - 9.8)
Non-Hispanic Black	N/A	N/A	N/A
Hispanic	N/A	N/A	N/A
Non-Hispanic Other	N/A	13.2 (5.6 - 20.9)	N/A
<b>Asthma Severity</b>	<b>%</b>	<b>%</b>	<b>%</b>
Intermittent	33.3	31.6	37.5
Mild Persistent	61.9	58.0	57.1
Moderate or Severe Persistent	N/A	10.4	N/A
<b>Asthma Action Plan (AAP)</b>	<b>%</b>	<b>%</b>	<b>%</b>
Has AAP	12.5	14.0	24.7
School District	Regional School District 17	Regional School District 18	Regional School District 19
<b>Asthma Prevalence</b>	<b>% (95% CI)</b>	<b>% (95% CI)</b>	<b>% (95% CI)</b>
Overall	17.1 (15.2 - 18.9)	9.4 (7.6 - 11.2)	6.5 (4.9 - 8.1)
Elementary School	12.8 (9.8 - 15.8)	7.4 (4.5 - 10.3)	N/A
Middle School	18.2 (15.1 - 21.3)	7.8 (5.0 - 10.6)	N/A
High School	19.9 (16.3 - 23.5)	13.1 (9.4 - 16.7)	6.5 (4.9 - 8.1)
Male	17.8 (15.1 - 20.5)	10.9 (8.2 - 13.7)	6.6 (4.3 - 9.0)
Female	16.4 (13.8 - 19.1)	9.3 (6.6 - 12.1)	6.8 (4.5 - 9.1)
Non-Hispanic White	15.1 (13.3 - 17.0)	3.5 (1.5 - 5.6)	N/A
Non-Hispanic Black	N/A	N/A	N/A
Hispanic	N/A	N/A	N/A
Non-Hispanic Other	N/A	N/A	N/A
<b>Asthma Severity</b>	<b>%</b>	<b>%</b>	<b>%</b>
Intermittent	24.9	31.8	N/A
Mild Persistent	71.9	65.2	83.1
Moderate or Severe Persistent	N/A	N/A	N/A
<b>Asthma Action Plan (AAP)</b>	<b>%</b>	<b>%</b>	<b>%</b>
Has AAP	N/A	N/A	N/A
School District	Ridgefield School District	Rocky Hill School District	Salem School District
<b>Asthma Prevalence</b>	<b>% (95% CI)</b>	<b>% (95% CI)</b>	<b>% (95% CI)</b>
Overall	12.7 (11.3 - 14.1)	10.0 (8.5 - 11.5)	12.0 (8.1 - 16.0)
Elementary School	7.6 (5.6 - 9.7)	10.2 (7.6 - 12.9)	12.5 (6.4 - 18.7)
Middle School	11.7 (8.9 - 14.5)	13.7 (10.9 - 16.5)	11.7 (6.6 - 16.8)
High School	17.0 (14.5 - 19.5)	5.9 (3.9 - 7.9)	N/A
Male	15.0 (12.8 - 17.2)	10.2 (8.1 - 12.3)	12.7 (7.2 - 18.2)
Female	10.8 (8.9 - 12.8)	9.3 (7.3 - 11.3)	12.1 (6.3 - 17.8)
Non-Hispanic White	13.7 (12.0 - 15.4)	8.0 (6.2 - 9.9)	11.8 (7.6 - 16.0)
Non-Hispanic Black	N/A	N/A	N/A
Hispanic	N/A	N/A	N/A
Non-Hispanic Other	N/A	7.7 (3.5 - 11.9)	N/A
<b>Asthma Severity</b>	<b>%</b>	<b>%</b>	<b>%</b>
Intermittent	24.6	N/A	N/A
Mild Persistent	46.0	74.2	N/A
Moderate or Severe Persistent	29.4	N/A	N/A
<b>Asthma Action Plan (AAP)</b>	<b>%</b>	<b>%</b>	<b>%</b>
Has AAP	14.3	15.0	N/A

<sup>1</sup>N/A = Prevalence estimate not available if: the sample size for the denominator was < 30; or the Relative Standard Error (RSE) is > 0.3; or the information was not reported. <sup>2</sup>N/A = Percentage not available if there were less than 20 cases with known asthma severity (i.e., excluding unclassified severity). Percentage may not add up to 100% due to rounding; data from 2010 to 2011 only. <sup>3</sup>N/A = Percentage not available if there were less than 20 students with asthma reported.

Table 7. School District Profile. Connecticut 2012-2014 (Continued)

School District	Salisbury School District	Scotland School District	Seymour School District
<b>Asthma Prevalence</b>	<b>% (95% CI)</b>	<b>% (95% CI)</b>	<b>% (95% CI)</b>
Overall	9.5 (4.2 - 14.8)	N/A	11.7 (10.1 - 13.3)
Elementary School	N/A	N/A	11.1 (8.4 - 13.9)
Middle School	N/A	N/A	11.7 (9.1 - 14.3)
High School	N/A	N/A	12.3 (9.4 - 15.3)
Male	N/A	N/A	13.0 (10.6 - 15.3)
Female	N/A	N/A	10.0 (7.9 - 12.1)
Non-Hispanic White	N/A	N/A	11.2 (9.0 - 13.3)
Non-Hispanic Black	N/A	N/A	N/A
Hispanic	N/A	N/A	17.9 (8.7 - 27.1)
Non-Hispanic Other	N/A	N/A	N/A
<b>Asthma Severity</b>	<b>%</b>	<b>%</b>	<b>%</b>
Intermittent	N/A	N/A	35.6
Mild Persistent	N/A	N/A	57.6
Moderate or Severe Persistent	N/A	N/A	N/A
<b>Asthma Action Plan (AAP)</b>	<b>%</b>	<b>%</b>	<b>%</b>
Has AAP	0	N/A	25.1
School District	Sharon School District	Shelton School District	Sherman School District
<b>Asthma Prevalence</b>	<b>% (95% CI)</b>	<b>% (95% CI)</b>	<b>% (95% CI)</b>
Overall	12.8 (6.0 - 19.5)	12.4 (11.3 - 13.5)	6.9 (3.6 - 10.1)
Elementary School	N/A	10.4 (8.5 - 12.3)	N/A
Middle School	N/A	17.3 (15.2 - 19.4)	N/A
High School	N/A	9.0 (7.3 - 10.6)	N/A
Male	N/A	13.5 (11.9 - 15.1)	12.6 (5.9 - 19.3)
Female	N/A	12.0 (10.4 - 13.6)	N/A
Non-Hispanic White	N/A	11.0 (9.6 - 12.4)	9.2 (4.6 - 13.8)
Non-Hispanic Black	N/A	N/A	N/A
Hispanic	N/A	20.7 (14.9 - 26.4)	N/A
Non-Hispanic Other	N/A	16.7 (10.4 - 22.9)	N/A
<b>Asthma Severity</b>	<b>%</b>	<b>%</b>	<b>%</b>
Intermittent	N/A	28.9	N/A
Mild Persistent	N/A	67.8	N/A
Moderate or Severe Persistent	N/A	N/A	N/A
<b>Asthma Action Plan (AAP)</b>	<b>%</b>	<b>%</b>	<b>%</b>
Has AAP	0	15.9	N/A
School District	Side By Side Charter School District	Simsbury School District	Somers School District
<b>Asthma Prevalence</b>	<b>% (95% CI)</b>	<b>% (95% CI)</b>	<b>% (95% CI)</b>
Overall	N/A	12.7 (11.6 - 13.9)	10.1 (8.2 - 12.1)
Elementary School	N/A	6.7 (5.0 - 8.4)	5.9 (2.5 - 9.3)
Middle School	N/A	12.6 (10.6 - 14.5)	10.6 (7.5 - 13.7)
High School	N/A	17.3 (15.1 - 19.5)	11.7 (8.5 - 15.0)
Male	N/A	14.6 (12.8 - 16.4)	10.8 (8.0 - 13.6)
Female	N/A	12.5 (10.7 - 14.2)	11.2 (8.1 - 14.2)
Non-Hispanic White	N/A	7.4 (6.2 - 8.7)	11.5 (7.3 - 15.8)
Non-Hispanic Black	N/A	N/A	N/A
Hispanic	N/A	N/A	N/A
Non-Hispanic Other	N/A	N/A	N/A
<b>Asthma Severity</b>	<b>%</b>	<b>%</b>	<b>%</b>
Intermittent	N/A	43.0	N/A
Mild Persistent	N/A	49.8	62.7
Moderate or Severe Persistent	N/A	N/A	N/A
<b>Asthma Action Plan (AAP)</b>	<b>%</b>	<b>%</b>	<b>%</b>
Has AAP	N/A	N/A	N/A

<sup>1</sup>N/A = Prevalence estimate not available if: the sample size for the denominator was < 30; or the Relative Standard Error (RSE) is > 0.3; or the information was not reported. <sup>2</sup>N/A = Percentage not available if there were less than 20 cases with known asthma severity (i.e., excluding unclassified severity). Percentage may not add up to 100% due to rounding; data from 2010 to 2011 only. <sup>3</sup>N/A = Percentage not available if there were less than 20 students with asthma reported.

Table 7. School District Profile. Connecticut 2012-2014 (Continued)

School District	South Windsor School District	Southington School District	Sprague School District
<b>Asthma Prevalence</b>	<b>% (95% CI)</b>	<b>% (95% CI)</b>	<b>% (95% CI)</b>
Overall	13.1 (11.9 - 14.4)	13.2 (12.2 - 14.1)	16.3 (11.4 - 21.1)
Elementary School	12.8 (10.5 - 15.0)	12.3 (10.6 - 14.0)	15.8 (8.9 - 22.8)
Middle School	13.0 (11.0 - 15.1)	14.1 (12.4 - 15.8)	16.7 (9.8 - 23.5)
High School	13.5 (11.5 - 15.6)	13.0 (11.3 - 14.7)	N/A
Male	13.9 (12.1 - 15.6)	14.3 (12.9 - 15.8)	22.3 (14.9 - 29.8)
Female	12.6 (10.8 - 14.3)	12.3 (10.9 - 13.6)	N/A
Non-Hispanic White	11.4 (10.0 - 12.8)	13.0 (11.9 - 14.1)	17.5 (11.7 - 23.3)
Non-Hispanic Black	27.7 (18.7 - 36.8)	35.8 (22.6 - 49.1)	N/A
Hispanic	21.7 (15.4 - 28.1)	20.0 (14.4 - 25.5)	N/A
Non-Hispanic Other	8.8 (5.7 - 11.9)	13.1 (7.5 - 18.7)	N/A
<b>Asthma Severity</b>	<b>%</b>	<b>%</b>	<b>%</b>
Intermittent	23.3	23.1	N/A
Mild Persistent	73.1	71.6	48.9
Moderate or Severe Persistent	N/A	5.2	N/A
<b>Asthma Action Plan (AAP)</b>	<b>%</b>	<b>%</b>	<b>%</b>
Has AAP	N/A	N/A	N/A
School District	Stafford School District	Stamford Academy District	Stamford School District
<b>Asthma Prevalence</b>	<b>% (95% CI)</b>	<b>% (95% CI)</b>	<b>% (95% CI)</b>
Overall	13.4 (11.4 - 15.5)	N/A	15.4 (14.7 - 16.0)
Elementary School	21.7 (17.3 - 26.0)	N/A	17.2 (16.0 - 18.4)
Middle School	7.0 (4.3 - 9.6)	N/A	17.9 (16.6 - 19.2)
High School	12.0 (8.5 - 15.4)	N/A	11.0 (10.0 - 12.1)
Male	15.8 (12.5 - 19.2)	N/A	17.8 (16.8 - 18.9)
Female	12.3 (9.5 - 15.0)	N/A	12.5 (11.6 - 13.4)
Non-Hispanic White	11.9 (9.5 - 14.4)	N/A	11.8 (10.4 - 13.1)
Non-Hispanic Black	N/A	N/A	16.8 (14.7 - 19.0)
Hispanic	N/A	N/A	10.4 (9.2 - 11.6)
Non-Hispanic Other	N/A	N/A	16.3 (12.2 - 20.4)
<b>Asthma Severity</b>	<b>%</b>	<b>%</b>	<b>%</b>
Intermittent	N/A	N/A	27.9
Mild Persistent	71.6	N/A	64.6
Moderate or Severe Persistent	N/A	N/A	7.6
<b>Asthma Action Plan (AAP)</b>	<b>%</b>	<b>%</b>	<b>%</b>
Has AAP	N/A	0	7.7
School District	Sterling School District	Stonington School District	Stratford School District
<b>Asthma Prevalence</b>	<b>% (95% CI)</b>	<b>% (95% CI)</b>	<b>% (95% CI)</b>
Overall	15.6 (11.4 - 19.7)	11.7 (10.2 - 13.2)	12.2 (11.3 - 13.1)
Elementary School	15.2 (9.2 - 21.3)	6.8 (4.8 - 8.7)	14.9 (13.1 - 16.7)
Middle School	15.8 (10.1 - 21.5)	13.7 (10.8 - 16.5)	11.2 (9.8 - 12.6)
High School	N/A	15.3 (12.4 - 18.2)	11.1 (9.5 - 12.6)
Male	19.2 (13.1 - 25.3)	11.6 (9.5 - 13.7)	13.9 (12.6 - 15.2)
Female	11.2 (5.8 - 16.5)	11.1 (9.0 - 13.2)	10.4 (9.2 - 11.6)
Non-Hispanic White	13.3 (9.3 - 17.4)	10.3 (8.8 - 11.9)	5.8 (4.6 - 7.0)
Non-Hispanic Black	N/A	N/A	12.4 (9.9 - 14.9)
Hispanic	N/A	N/A	8.1 (6.4 - 9.8)
Non-Hispanic Other	N/A	38.1 (24.6 - 51.6)	N/A
<b>Asthma Severity</b>	<b>%</b>	<b>%</b>	<b>%</b>
Intermittent	N/A	26.4	25.5
Mild Persistent	50.0	62.6	66.4
Moderate or Severe Persistent	N/A	N/A	8.1
<b>Asthma Action Plan (AAP)</b>	<b>%</b>	<b>%</b>	<b>%</b>
Has AAP	N/A	14.8	11.2

<sup>1</sup>N/A = Prevalence estimate not available if: the sample size for the denominator was < 30; or the Relative Standard Error (RSE) is > 0.3; or the information was not reported. <sup>2</sup>N/A = Percentage not available if there were less than 20 cases with known asthma severity (i.e., excluding unclassified severity). Percentage may not add up to 100% due to rounding; data from 2010 to 2011 only. <sup>3</sup>N/A = Percentage not available if there were less than 20 students with asthma reported.

Table 7. School District Profile. Connecticut 2012-2014 (Continued)

School District	Suffield School District	The Bridge Academy District	The Gilbert School District
<b>Asthma Prevalence</b>	<b>% (95% CI)</b>	<b>% (95% CI)</b>	<b>% (95% CI)</b>
Overall	11.8 (10.2 - 13.4)	22.7 (14.0 - 31.5)	9.3 (6.8 - 11.8)
Elementary School	11.6 (8.2 - 14.9)	N/A	N/A
Middle School	12.4 (9.7 - 15.1)	N/A	9.7 (6.2 - 13.2)
High School	11.4 (8.9 - 13.9)	22.7 (14.0 - 31.5)	8.9 (5.4 - 12.3)
Male	13.5 (11.1 - 16.0)	N/A	8.9 (5.8 - 12.1)
Female	9.8 (7.7 - 11.9)	29.3 (16.4 - 42.2)	11.7 (7.1 - 16.3)
Non-Hispanic White	10.9 (8.9 - 12.9)	N/A	10.5 (7.5 - 13.4)
Non-Hispanic Black	N/A	N/A	N/A
Hispanic	N/A	N/A	N/A
Non-Hispanic Other	N/A	N/A	N/A
<b>Asthma Severity</b>	<b>%</b>	<b>%</b>	<b>%</b>
Intermittent	24.3	N/A	N/A
Mild Persistent	67.6	N/A	79.3
Moderate or Severe Persistent	N/A	N/A	N/A
<b>Asthma Action Plan (AAP)</b>	<b>%</b>	<b>%</b>	<b>%</b>
Has AAP	N/A	N/A	N/A
School District	Thomaston School District	Thompson School District	Tolland School District
<b>Asthma Prevalence</b>	<b>% (95% CI)</b>	<b>% (95% CI)</b>	<b>% (95% CI)</b>
Overall	8.1 (6.0 - 10.2)	12.4 (9.9 - 14.8)	22.1 (20.1 - 24.0)
Elementary School	8.7 (4.5 - 13.0)	13.6 (9.0 - 18.1)	17.6 (14.0 - 21.2)
Middle School	6.5 (3.8 - 9.3)	13.5 (9.4 - 17.5)	20.9 (17.9 - 24.0)
High School	10.0 (5.7 - 14.3)	9.6 (5.6 - 13.7)	26.3 (22.9 - 29.7)
Male	10.4 (6.9 - 13.9)	12.2 (8.8 - 15.6)	24.8 (22.0 - 27.7)
Female	7.1 (4.3 - 9.9)	12.2 (8.8 - 15.7)	18.8 (16.2 - 21.4)
Non-Hispanic White	7.8 (5.7 - 9.9)	11.4 (7.8 - 15.0)	17.6 (15.6 - 19.6)
Non-Hispanic Black	N/A	N/A	N/A
Hispanic	N/A	N/A	N/A
Non-Hispanic Other	N/A	N/A	N/A
<b>Asthma Severity</b>	<b>%</b>	<b>%</b>	<b>%</b>
Intermittent	N/A	34.8	35.1
Mild Persistent	73.2	53.0	59.8
Moderate or Severe Persistent	N/A	N/A	N/A
<b>Asthma Action Plan (AAP)</b>	<b>%</b>	<b>%</b>	<b>%</b>
Has AAP	N/A	N/A	8.1
School District	Torrington School District	Trumbull School District	Union School District
<b>Asthma Prevalence</b>	<b>% (95% CI)</b>	<b>% (95% CI)</b>	<b>% (95% CI)</b>
Overall	10.2 (8.9 - 11.6)	10.1 (9.3 - 10.9)	N/A
Elementary School	10.5 (8.3 - 12.7)	9.2 (7.9 - 10.5)	N/A
Middle School	13.9 (11.3 - 16.5)	10.8 (9.3 - 12.3)	N/A
High School	4.9 (3.1 - 6.8)	10.6 (9.1 - 12.1)	N/A
Male	12.9 (10.7 - 15.1)	10.8 (9.6 - 12.0)	N/A
Female	7.9 (6.1 - 9.8)	9.3 (8.2 - 10.4)	N/A
Non-Hispanic White	6.0 (4.6 - 7.4)	9.1 (8.1 - 10.0)	N/A
Non-Hispanic Black	N/A	21.3 (14.4 - 28.2)	N/A
Hispanic	10.5 (5.8 - 15.3)	13.3 (9.6 - 17.0)	N/A
Non-Hispanic Other	N/A	10.0 (6.6 - 13.4)	N/A
<b>Asthma Severity</b>	<b>%</b>	<b>%</b>	<b>%</b>
Intermittent	27.5	32.0	N/A
Mild Persistent	63.4	59.5	N/A
Moderate or Severe Persistent	N/A	8.5	N/A
<b>Asthma Action Plan (AAP)</b>	<b>%</b>	<b>%</b>	<b>%</b>
Has AAP	8.3	26.1	0

<sup>1</sup>N/A = Prevalence estimate not available if: the sample size for the denominator was < 30; or the Relative Standard Error (RSE) is > 0.3; or the information was not reported. <sup>2</sup>N/A = Percentage not available if there were less than 20 cases with known asthma severity (i.e., excluding unclassified severity). Percentage may not add up to 100% due to rounding; data from 2010 to 2011 only. <sup>3</sup>N/A = Percentage not available if there were less than 20 students with asthma reported.

Table 7. School District Profile. Connecticut 2012-2014 (Continued)

School District	Vernon School District	Voluntown School District	Wallingford School District
<b>Asthma Prevalence</b>	<b>% (95% CI)</b>	<b>% (95% CI)</b>	<b>% (95% CI)</b>
Overall	21.1 (19.3 - 22.8)	11.4 (5.0 - 17.7)	12.6 (11.6 - 13.7)
Elementary School	19.4 (16.5 - 22.2)	N/A	9.6 (7.9 - 11.4)
Middle School	22.0 (18.9 - 25.2)	N/A	16.0 (14.1 - 17.9)
High School	21.9 (18.9 - 25.0)	N/A	11.6 (10.0 - 13.3)
Male	23.9 (21.4 - 26.5)	N/A	12.9 (11.4 - 14.4)
Female	18.0 (15.7 - 20.4)	N/A	12.0 (10.6 - 13.4)
Non-Hispanic White	16.7 (14.5 - 18.8)	N/A	6.5 (5.2 - 7.8)
Non-Hispanic Black	20.9 (15.2 - 26.7)	N/A	N/A
Hispanic	27.8 (21.9 - 33.7)	N/A	7.3 (3.5 - 11.2)
Non-Hispanic Other	28.1 (19.1 - 37.1)	N/A	N/A
<b>Asthma Severity</b>	<b>%</b>	<b>%</b>	<b>%</b>
Intermittent	29.9	N/A	32.5
Mild Persistent	65.3	N/A	54.3
Moderate or Severe Persistent	N/A	N/A	13.1
<b>Asthma Action Plan (AAP)</b>	<b>%</b>	<b>%</b>	<b>%</b>
Has AAP	N/A	N/A	8.6
School District	Waterbury School District	Waterford School District	Watertown School District
<b>Asthma Prevalence</b>	<b>% (95% CI)</b>	<b>% (95% CI)</b>	<b>% (95% CI)</b>
Overall	21.5 (20.8 - 22.3)	11.5 (10.0 - 12.9)	9.4 (8.1 - 10.7)
Elementary School	24.9 (23.6 - 26.3)	8.2 (5.8 - 10.6)	9.0 (6.7 - 11.3)
Middle School	18.7 (17.4 - 19.9)	10.7 (8.3 - 13.0)	12.2 (9.8 - 14.6)
High School	20.6 (19.3 - 21.9)	15.0 (12.2 - 17.8)	6.7 (4.8 - 8.6)
Male	24.0 (22.9 - 25.1)	12.7 (10.6 - 14.8)	12.0 (10.0 - 14.0)
Female	18.5 (17.5 - 19.5)	10.6 (8.5 - 12.7)	6.5 (4.9 - 8.0)
Non-Hispanic White	15.1 (13.4 - 16.7)	8.8 (7.1 - 10.4)	6.2 (4.6 - 7.8)
Non-Hispanic Black	18.5 (16.9 - 20.1)	N/A	N/A
Hispanic	18.2 (17.1 - 19.3)	15.9 (7.6 - 24.1)	N/A
Non-Hispanic Other	18.8 (14.5 - 23.2)	N/A	N/A
<b>Asthma Severity</b>	<b>%</b>	<b>%</b>	<b>%</b>
Intermittent	27.3	N/A	18.0
Mild Persistent	63.5	80.2	76.7
Moderate or Severe Persistent	9.2	N/A	N/A
<b>Asthma Action Plan (AAP)</b>	<b>%</b>	<b>%</b>	<b>%</b>
Has AAP	2.7	N/A	18.9
School District	West Hartford School District	West Haven School District	Westbrook School District
<b>Asthma Prevalence</b>	<b>% (95% CI)</b>	<b>% (95% CI)</b>	<b>% (95% CI)</b>
Overall	14.1 (13.2 - 14.9)	12.2 (11.1 - 13.3)	9.6 (7.3 - 12.0)
Elementary School	12.5 (11.1 - 13.9)	12.4 (10.6 - 14.2)	11.6 (7.1 - 16.0)
Middle School	15.9 (14.4 - 17.4)	18.6 (16.1 - 21.0)	6.5 (3.1 - 9.9)
High School	13.8 (12.4 - 15.2)	6.7 (5.3 - 8.2)	10.7 (6.6 - 14.9)
Male	15.3 (14.1 - 16.6)	13.5 (11.9 - 15.1)	11.8 (8.1 - 15.5)
Female	12.5 (11.4 - 13.6)	9.0 (7.7 - 10.3)	8.5 (5.3 - 11.8)
Non-Hispanic White	8.9 (7.6 - 10.2)	11.3 (8.4 - 14.3)	8.3 (5.9 - 10.8)
Non-Hispanic Black	12.0 (7.3 - 16.7)	9.0 (6.8 - 11.2)	N/A
Hispanic	15.5 (12.2 - 18.8)	8.4 (6.3 - 10.5)	N/A
Non-Hispanic Other	9.2 (5.0 - 13.3)	N/A	N/A
<b>Asthma Severity</b>	<b>%</b>	<b>%</b>	<b>%</b>
Intermittent	25.8	26.9	N/A
Mild Persistent	68.1	64.0	74.5
Moderate or Severe Persistent	6.1	9.2	N/A
<b>Asthma Action Plan (AAP)</b>	<b>%</b>	<b>%</b>	<b>%</b>
Has AAP	3.7	17.9	N/A

<sup>1</sup>N/A = Prevalence estimate not available if: the sample size for the denominator was < 30; or the Relative Standard Error (RSE) is > 0.3; or the information was not reported. <sup>2</sup>N/A = Percentage not available if there were less than 20 cases with known asthma severity (i.e., excluding unclassified severity). Percentage may not add up to 100% due to rounding; data from 2010 to 2011 only. <sup>3</sup>N/A = Percentage not available if there were less than 20 students with asthma reported.

Table 7. School District Profile. Connecticut 2012-2014 (Continued)

School District	Weston School District	Westport School District	Wethersfield School District
<b>Asthma Prevalence</b>	<b>% (95% CI)</b>	<b>% (95% CI)</b>	<b>% (95% CI)</b>
Overall	5.1 (4.0 - 6.2)	7.3 (6.5 - 8.1)	7.0 (6.1 - 8.0)
Elementary School	6.6 (4.0 - 9.2)	6.4 (5.0 - 7.7)	11.2 (8.9 - 13.6)
Middle School	6.6 (4.7 - 8.6)	9.3 (7.8 - 10.9)	7.9 (6.5 - 9.4)
High School	2.6 (1.3 - 3.9)	6.3 (5.0 - 7.5)	2.4 (1.4 - 3.4)
Male	6.0 (4.3 - 7.6)	9.4 (8.1 - 10.6)	7.5 (6.2 - 8.9)
Female	4.1 (2.7 - 5.6)	5.1 (4.2 - 6.1)	6.7 (5.4 - 7.9)
Non-Hispanic White	5.2 (3.7 - 6.6)	4.1 (3.4 - 4.9)	6.1 (4.9 - 7.2)
Non-Hispanic Black	N/A	N/A	N/A
Hispanic	N/A	24.3 (10.5 - 38.1)	5.8 (3.1 - 8.6)
Non-Hispanic Other	N/A	N/A	N/A
<b>Asthma Severity</b>	<b>%</b>	<b>%</b>	<b>%</b>
Intermittent	N/A	31.0	14.6
Mild Persistent	66.7	61.6	78.1
Moderate or Severe Persistent	N/A	N/A	N/A
<b>Asthma Action Plan (AAP)</b>	<b>%</b>	<b>%</b>	<b>%</b>
Has AAP	N/A	6.2	12.2
School District	Wilmington School District	Wilton School District	Winchester School District
<b>Asthma Prevalence</b>	<b>% (95% CI)</b>	<b>% (95% CI)</b>	<b>% (95% CI)</b>
Overall	18.6 (14.0 - 23.2)	7.7 (6.7 - 8.7)	N/A
Elementary School	14.7 (8.3 - 21.2)	12.7 (10.1 - 15.2)	N/A
Middle School	21.3 (15.0 - 27.6)	5.6 (4.2 - 7.0)	N/A
High School	N/A	6.4 (4.9 - 8.0)	N/A
Male	18.3 (12.1 - 24.6)	8.8 (7.3 - 10.3)	N/A
Female	21.7 (14.2 - 29.3)	6.4 (5.1 - 7.7)	N/A
Non-Hispanic White	19.4 (14.5 - 24.2)	4.0 (3.0 - 5.0)	N/A
Non-Hispanic Black	N/A	N/A	N/A
Hispanic	N/A	N/A	N/A
Non-Hispanic Other	N/A	N/A	N/A
<b>Asthma Severity</b>	<b>%</b>	<b>%</b>	<b>%</b>
Intermittent	N/A	39.3	N/A
Mild Persistent	88.6	45.5	N/A
Moderate or Severe Persistent	N/A	N/A	N/A
<b>Asthma Action Plan (AAP)</b>	<b>%</b>	<b>%</b>	<b>%</b>
Has AAP	N/A	N/A	0
School District	Windham School District	Windsor Locks School District	Windsor School District
<b>Asthma Prevalence</b>	<b>% (95% CI)</b>	<b>% (95% CI)</b>	<b>% (95% CI)</b>
Overall	20.5 (18.9 - 22.2)	13.4 (11.3 - 15.4)	21.0 (19.3 - 22.8)
Elementary School	19.2 (17.0 - 21.4)	10.7 (7.4 - 14.1)	23.7 (20.2 - 27.1)
Middle School	27.7 (24.2 - 31.1)	17.7 (13.8 - 21.7)	17.2 (14.4 - 20.0)
High School	13.8 (10.6 - 17.0)	11.5 (8.3 - 14.7)	22.5 (19.7 - 25.2)
Male	21.8 (19.5 - 24.2)	15.4 (12.4 - 18.4)	23.7 (21.3 - 26.2)
Female	19.1 (16.7 - 21.4)	11.2 (8.5 - 14.0)	17.6 (15.3 - 19.9)
Non-Hispanic White	15.3 (11.0 - 19.6)	8.0 (5.9 - 10.1)	8.8 (5.1 - 12.6)
Non-Hispanic Black	N/A	N/A	13.1 (9.7 - 16.5)
Hispanic	14.0 (12.1 - 15.9)	N/A	10.9 (7.0 - 14.9)
Non-Hispanic Other	N/A	N/A	34.3 (19.7 - 48.8)
<b>Asthma Severity</b>	<b>%</b>	<b>%</b>	<b>%</b>
Intermittent	33.5	N/A	23.9
Mild Persistent	61.6	75.0	67.4
Moderate or Severe Persistent	N/A	N/A	8.7
<b>Asthma Action Plan (AAP)</b>	<b>%</b>	<b>%</b>	<b>%</b>
Has AAP	N/A	N/A	N/A

<sup>1</sup>N/A = Prevalence estimate not available if: the sample size for the denominator was < 30; or the Relative Standard Error (RSE) is > 0.3; or the information was not reported. <sup>2</sup>N/A = Percentage not available if there were less than 20 cases with known asthma severity (i.e., excluding unclassified severity). Percentage may not add up to 100% due to rounding; data from 2010 to 2011 only. <sup>3</sup>N/A = Percentage not available if there were less than 20 students with asthma reported.



Table 7. School District Profile. Connecticut 2012-2014 (Continued)

School District	Wolcott School District	Woodbridge School District	Woodstock Academy District
<b>Asthma Prevalence</b>	<b>% (95% CI)</b>	<b>% (95% CI)</b>	<b>% (95% CI)</b>
Overall	11.2 (9.7 - 12.7)	7.8 (4.7 - 10.9)	12.0 (9.7 - 14.3)
Elementary School	9.4 (6.8 - 12.1)	7.8 (4.7 - 10.9)	N/A
Middle School	13.3 (10.7 - 16.0)	N/A	N/A
High School	10.3 (7.9 - 12.7)	N/A	12.0 (9.7 - 14.3)
Male	12.8 (10.6 - 15.0)	9.3 (4.5 - 14.1)	12.2 (8.9 - 15.5)
Female	9.7 (7.6 - 11.7)	N/A	11.6 (8.4 - 14.7)
Non-Hispanic White	4.6 (3.1 - 6.0)	6.7 (3.3 - 10.0)	12.5 (9.4 - 15.6)
Non-Hispanic Black	N/A	N/A	N/A
Hispanic	N/A	N/A	N/A
Non-Hispanic Other	N/A	N/A	N/A
<b>Asthma Severity</b>	<b>%</b>	<b>%</b>	<b>%</b>
Intermittent	20.3	N/A	N/A
Mild Persistent	72.5	N/A	57.5
Moderate or Severe Persistent	N/A	N/A	N/A
<b>Asthma Action Plan (AAP)</b>	<b>%</b>	<b>%</b>	<b>%</b>
Has AAP	22.4	N/A	N/A
<b>School District</b>	<b>Woodstock School District</b>		
<b>Asthma Prevalence</b>	<b>% (95% CI)</b>		
Overall	16.1 (13.0 - 19.2)		
Elementary School	19.3 (14.3 - 24.3)		
Middle School	13.7 (9.8 - 17.5)		
High School	N/A		
Male	20.3 (15.5 - 25.1)		
Female	12.0 (8.1 - 15.8)		
Non-Hispanic White	12.7 (9.5 - 16.0)		
Non-Hispanic Black	N/A		
Hispanic	N/A		
Non-Hispanic Other	N/A		
<b>Asthma Severity</b>	<b>%</b>		
Intermittent	N/A		
Mild Persistent	70.4		
Moderate or Severe Persistent	N/A		
<b>Asthma Action Plan (AAP)</b>	<b>%</b>		
Has AAP	N/A		

<sup>1</sup>N/A = Prevalence estimate not available if: the sample size for the denominator was < 30; or the Relative Standard Error (RSE) is > 0.3; or the information was not reported. <sup>2</sup>N/A = Percentage not available if there were less than 20 cases with known asthma severity (i.e., excluding unclassified severity). Percentage may not add up to 100% due to rounding; data from 2010 to 2011 only. <sup>3</sup>N/A = Percentage not available if there were less than 20 students with asthma reported.

## Appendix 1. Listing of School Reporting, Connecticut, 2012-2014

School District, School Type, School Name	2012	2013	2014
<b>Achievement First Hartford Academy Inc. District</b>		X	X
<i>Public</i>			
Achievement First Hartford Academy Inc.		x	x
<b>Amistad Academy District</b>	X		
<i>Public</i>			
Amistad Academy	x		
<b>Andover School District</b>	X	X	X
<i>Public</i>			
Andover Elementary School	x	x	x
<b>Ansonia School District</b>	X	X	X
<i>Public</i>			
Ansonia High School	x	x	x
Ansonia Middle School	x	x	x
Mead School	x	x	x
Prendergast School	x	x	x
<i>Private</i>			
Assumption School	x	x	x
<b>Area Cooperative Educational Services</b>	X	X	X
<i>Public</i>			
A. C. E. S. Special Education	x	x	
Mill Road School	x	x	x
Thomas Edison Magnet Middle School	x	x	x
Village School	x	x	x
Whitney High School East	x	x	
Whitney High School North		x	x
Wintergreen Interdistrict Magnet School	x	x	x
<b>Ashford School District</b>	X	X	X
<i>Public</i>			
Ashford School	x	x	x
<b>Avon School District</b>	X	X	X
<i>Public</i>			
Avon High School	x	x	x
Avon Leap			x
Pine Grove School	x	x	x
Roaring Brook School	x	x	x
Thompson Brook School	x	x	x
<i>Private</i>			
Farmington Valley Academy			x

School District, School Type, School Name	2012	2013	2014
<b>Barkhamsted School District</b>	X	X	X
<i>Public</i>			
Barkhamsted Elementary School	x		x
Shared Services Integrated Preschool		x	
<b>Berlin School District</b>	X	X	X
<i>Public</i>			
Berlin High School	x	x	x
Catherine M. McGee Middle School	x	x	x
Emma Hart Willard School	x	x	
Mary E. Griswold School	x	x	
Richard D. Hubbard School	x	x	
<i>Private</i>			
Saint Paul School	x	x	
<b>Bethany School District</b>	X		
<i>Public</i>			
Bethany Community School	x		
<b>Bethel School District</b>	X	X	X
<i>Public</i>			
Anna H. Rockwell School	x	x	x
Bethel High School	x	x	x
Bethel Middle School	x	x	x
Frank A. Berry School	x	x	x
<i>Private</i>			
St. Mary School - Bethel	x	x	
<b>Bloomfield School District</b>	X	X	X
<i>Public</i>			
Bloomfield High School	x	x	x
Carmen Arace Intermediate School	x	x	x
Laurel School	x	x	x
Metacomet School		x	x
The Big Picture High School	x	x	x
Wintonbury Early Childhood Magnet School	x	x	x
<i>Private</i>			
Bess & Paul Sigel Hebrew Academy		x	
<b>Bolton School District</b>	X	X	X
<i>Public</i>			
Bolton Center School	x	x	x
Bolton High School	x	x	x

## Appendix 1. Listing of School Reporting, Connecticut, 2012-2014

School District, School Type, School Name	2012	2013	2014
<b>Bozrah School District</b>		<b>X</b>	<b>X</b>
<i>Public</i>			
Fields Memorial School		x	x
<b>Branford School District</b>	<b>X</b>	<b>X</b>	<b>X</b>
<i>Public</i>			
Branford High School	x	x	
Francis Walsh Intermediate School	x	x	x
Indian Neck School	x		
John B. Sliney School	x		
Mary R. Tisko School	x		
Mary T. Murphy School	x	x	x
<i>Private</i>			
St. Mary School	x		
<b>Brass City Charter School District</b>		<b>X</b>	<b>X</b>
<i>Public</i>			
Brass City Charter School		x	x
<b>Bridgeport Achievement First District</b>	<b>X</b>	<b>X</b>	
<i>Public</i>			
Achievement First Bridgeport Academy	x	x	
<b>Bridgeport School District</b>	<b>X</b>	<b>X</b>	<b>X</b>
<i>Public</i>			
Barnum School	x	x	x
Bassick High School	x	x	x
Beardsley School	x	x	x
Black Rock School	x	x	x
Blackham School	x	x	x
Bridgeport Military Academy			x
Bryant School	x	x	x
Central High School	x	x	x
Cesar Batalla	x	x	x
Classical Studies Academy	x	x	x
Columbus Annex @ Zion School			x
Columbus School	x	x	x
Cross School	x	x	x
Curiale School	x	x	x
Dunbar School	x		x
Edison School	x	x	x
Fairchild Wheeler- Aerospace/Hydrospace		x	x

School District, School Type, School Name	2012	2013	2014
Fairchild Wheeler- Information Technology		x	
Fairchild Wheeler- Zoological		x	
Geraldine Johnson	x	x	x
Hall School	x	x	x
Hallen School	x	x	x
Harding High School	x	x	x
High Horizons School	x	x	x
Hooker School	x	x	x
Interdistrict Discovery Magnet School	x	x	x
Jettie S Tisdale		x	
Luis Munoz Marin School	x	x	x
Madison School	x	x	x
Multicultural Magnet School	x	x	x
Park City Magnet School	x		x
Read School	x	x	x
Roosevelt School		x	x
Skane Center	x	x	x
Waltersville School	x	x	x
Winthrop School	x	x	x
<i>Private</i>			
Bridgeport International Academy	x		
Cathedral Academy	x		x
Cathedral Academy Lower School	x	x	x
Kolbe Cathedral High School	x	x	
Saint Peter	x		
St. Ambrose	x		
St. Andrew Academy	x	x	x
St. Ann Academy	x	x	x
<b>Bristol School District</b>	<b>X</b>	<b>X</b>	<b>X</b>
<i>Public</i>			
Bristol Central High School	x	x	x
Bristol Early Childhood Center			x
Bristol Eastern High School	x	x	x
Chippens Hill Middle School	x	x	x
Edgewood School	x	x	x
Ellen P. Hubbell School	x	x	x
Greene-Hills School	x	x	x
Ivy Drive School	x	x	x

## Appendix 1. Listing of School Reporting, Connecticut, 2012-2014

School District, School Type, School Name	2012	2013	2014
Mountain View School	x	x	x
Northeast Middle School	x	x	x
South Side School	x	x	x
Stafford School	x	x	x
West Bristol School	x	x	x
West Woods School	x	x	x
<i>Private</i>			
Heritage Christian	x	x	x
Immanuel Lutheran School	x	x	x
Saint Anthony School	x	x	x
St. Joseph School	x	x	x
St. Matthew School	x	x	x
St. Paul Catholic High School	x	x	x
<b>Brookfield School District</b>	<b>X</b>	<b>X</b>	<b>X</b>
<i>Public</i>			
Brookfield High School	x	x	x
Center Elementary School	x	x	x
Huckleberry Hill Elementary School		x	x
Whisconier Middle School	x	x	x
<i>Private</i>			
St. Joseph School - Brookfield	x		
<b>Brooklyn School District</b>	<b>X</b>	<b>X</b>	<b>X</b>
<i>Public</i>			
Brooklyn Elementary School	x	x	x
Brooklyn Middle School	x	x	x
<b>Canaan School District</b>	<b>X</b>	<b>X</b>	<b>X</b>
<i>Public</i>			
Lee H. Kellogg School	x	x	x
<b>Canterbury School District</b>	<b>X</b>	<b>X</b>	<b>X</b>
<i>Public</i>			
Canterbury Elementary School	x	x	x
Dr. Helen Baldwin Middle School	x	x	x
<b>Canton School District</b>	<b>X</b>	<b>X</b>	<b>X</b>
<i>Public</i>			
Canton High School	x	x	x
Canton Middle School	x	x	x
Cherry Brook School	x	x	x

School District, School Type, School Name	2012	2013	2014
<b>Capitol Region Education Council</b>	X	X	X
<i>Public</i>			
Academy of Aerospace and Engineering	x		
Academy of Aerospace and Engineering Elementary School	x		x
CREC - Public Safety Academy Interdistrict Magnet School	x		
CREC Discovery Academy	x		
CREC IPM Plainville	x		
CREC Medical Prof and Teacher Training Academy	x	x	x
East Hartford/Glastonbury Magnet School	x		
Farmington Valley Regional Diagnostic Center	x		
Greater Hartford Academy of Arts	x	x	
International Magnet School for Global Citizenship	x		
Metropolitan Learning Center	x		
Montessori Magnet School	x		x
Museum Academy	x	x	x
Polaris Center	x		
Reggio Magnet School of the Arts	x	x	x
River Street School	x		
River Street School - Coltsville	x		
Two Rivers Magnet High School	x	x	
Two Rivers Middle Magnet School	x		x
University of Hartford Multiple Intelligences Magnet School	x		
<b>Chaplin School District</b>	<b>X</b>	<b>X</b>	<b>X</b>
<i>Public</i>			
Chaplin Elementary School	x	x	x
<b>Cheshire School District</b>	<b>X</b>	<b>X</b>	<b>X</b>
<i>Public</i>			
Chapman School	x	x	x
Cheshire High School	x	x	x
Darcey School	x	x	
Dodd Middle School	x	x	x
Doolittle School	x	x	
Highland School	x	x	x

## Appendix 1. Listing of School Reporting, Connecticut, 2012-2014

School District, School Type, School Name	2012	2013	2014
Humiston School	x	x	x
Norton School	x	x	x
<i>Private</i>			
St. Bridget School	x	x	x
<b>Chester School District</b>	<b>X</b>	<b>X</b>	<b>X</b>
<i>Public</i>			
Chester Elementary School	x	x	x
<b>Clinton School District</b>		<b>X</b>	<b>X</b>
<i>Public</i>			
Jared Eliot School		x	x
Lewin G. Joel Jr. School		x	x
The Morgan School		x	x
<b>Colchester School District</b>	<b>X</b>	<b>X</b>	<b>X</b>
<i>Public</i>			
Bacon Academy	x	x	x
Colchester Elementary School	x	x	x
William J. Johnston School	x	x	x
<b>Colebrook School District</b>	<b>X</b>	<b>X</b>	<b>X</b>
<i>Public</i>			
Colebrook Consolidated School	x	x	x
<b>Columbia School District</b>	<b>X</b>	<b>X</b>	<b>X</b>
<i>Public</i>			
Horace W. Porter School	x	x	x
<b>Common Ground High School District</b>	<b>X</b>	<b>X</b>	<b>X</b>
<i>Public</i>			
Common Ground High School	x	x	x
<b>Connecticut Technical High School System</b>	<b>X</b>	<b>X</b>	<b>X</b>
<i>Public</i>			
A. I. Prince Technical High School	x	x	x
Bullard-Havens Technical High School	x	x	x
E. C. Goodwin Technical High School	x	x	x
Eli Whitney Technical High School	x	x	x
Ella T. Grasso Southeastern Technical High School	x	x	x
Emmett O'Brien Technical High School	x	x	x
H. C. Wilcox Technical High School	x	x	x
H. H. Ellis Technical High School	x	x	x
Henry Abbott Technical High School	x	x	x

School District, School Type, School Name	2012	2013	2014
Howell Cheney Technical High School	x	x	x
J. M. Wright Technical High School			x
Norwich Technical High School	x	x	x
Oliver Wolcott Technical High School	x	x	x
Platt Technical High School	x	x	x
Vinal Technical High School	x	x	x
W. F. Kaynor Technical High School	x	x	x
Windham Technical High School	x	x	x
<b>Cooperative Educational Services</b>	<b>X</b>	<b>X</b>	<b>X</b>
<i>Public</i>			
C. E. S. Special Education		x	x
Six to Six Magnet School	x	x	x
<b>Cornwall School District</b>	<b>X</b>	<b>X</b>	<b>X</b>
<i>Public</i>			
Cornwall Consolidated School	x	x	x
<b>Coventry School District</b>	<b>X</b>	<b>X</b>	<b>X</b>
<i>Public</i>			
Capt. Nathan Hale School	x	x	x
Coventry Grammar School	x	x	x
Coventry High School	x	x	x
<b>Cromwell School District</b>	<b>X</b>	<b>X</b>	<b>X</b>
<i>Public</i>			
Cromwell High School	x	x	x
Cromwell Middle School	x	x	x
Edna C. Stevens School	x	x	x
<b>Danbury School District</b>	<b>X</b>	<b>X</b>	<b>X</b>
<i>Public</i>			
Alternative Center For Excellence	x	x	x
Broadview Middle School	x	x	x
Danbury Early Childhood Center		x	x
Danbury High School	x	x	x
Ellsworth Avenue School	x	x	x
Great Plain School	x	x	x
Hayestown Avenue School	x	x	x
King Street Intermediate School			x
King Street Primary School	x	x	x
Mill Ridge Primary School	x	x	x
Morris Street School		x	x

## Appendix 1. Listing of School Reporting, Connecticut, 2012-2014

School District, School Type, School Name	2012	2013	2014
Park Avenue School	x	x	x
Pembroke School	x	x	x
Rogers Park Middle School	x	x	x
Shelter Rock School	x	x	x
South Street School	x	x	x
Stadley Rough School	x	x	x
Western CT Academy of International Studies	x	x	x
Westside Middle School	x		x
<i>Private</i>			
Hudson Country Montessori	x	x	x
Immaculate High School	x	x	x
Immanuel Lutheran	x	x	x
Pathways Academy	x	x	x
Sacred Heart School	x		
St. Gregory The Great School	x	x	x
St. Joseph School - Danbury	x	x	x
St. Peter School	x	x	x
Wooster School			x
<b>Darien School District</b>	<b>X</b>	<b>X</b>	<b>X</b>
<i>Public</i>			
Darien High School	x	x	x
Hindley Elementary School	x	x	x
Holmes Elementary School	x	x	x
Middlesex Middle School	x	x	x
Ox Ridge Elementary School	x	x	x
Royle Elementary School	x	x	
Tokeneke Elementary School	x	x	x
<b>Deep River School District</b>	<b>X</b>	<b>X</b>	<b>X</b>
<i>Public</i>			
Deep River Elementary School	x	x	x
<b>Derby School District</b>	<b>X</b>	<b>X</b>	<b>X</b>
<i>Public</i>			
Bradley School		x	x
Derby High School	x	x	x
Derby Middle School		x	x
Irving School		x	x
<i>Private</i>			
St. Mary - St. Michael School		x	x

School District, School Type, School Name	2012	2013	2014
<b>East Granby School District</b>	<b>X</b>	<b>X</b>	<b>X</b>
<i>Public</i>			
Allgrove School	x	x	x
East Granby High School	x	x	x
East Granby Middle School	x	x	x
<b>East Haddam School District</b>	<b>X</b>	<b>X</b>	<b>X</b>
<i>Public</i>			
East Haddam Elementary School	x	x	x
Nathan Hale-Ray High School	x	x	x
Nathan Hale-Ray Middle School	x	x	x
<b>East Hampton School District</b>		<b>X</b>	<b>X</b>
<i>Public</i>			
East Hampton High School		x	x
East Hampton Middle School		x	x
Memorial School		x	x
<b>East Hartford School District</b>	<b>X</b>	<b>X</b>	<b>X</b>
<i>Public</i>			
Anna E. Norris School	x	x	x
Dr. Franklin H. Mayberry School	x	x	x
Dr. John A. Langford School	x	x	x
Dr. Thomas S. O'Connell School	x	x	x
East Hartford High School	x	x	x
East Hartford Middle School	x	x	x
Governor William Pitkin School	x	x	x
Hockanum School	x	x	x
Joseph O. Goodwin School	x	x	x
Robert J. O'Brien School	x	x	x
Silver Lane School	x	x	x
Stevens Alternate High school	x	x	x
Sunset Ridge School	x	x	x
Willowbrook Early Childhood	x	x	x
Woodland School	x	x	x
<i>Private</i>			
Saint Christopher School	x	x	x

## Appendix 1. Listing of School Reporting, Connecticut, 2012-2014

School District, School Type, School Name	2012	2013	2014
<b>East Haven School District</b>			<b>X</b>
<i>Public</i>			
East Haven High School			x
Joseph Melillo Middle School			x
Overbrook School			x
<b>East Lyme School District</b>	<b>X</b>	<b>X</b>	<b>X</b>
<i>Public</i>			
East Lyme High School	x	x	x
East Lyme Middle School	x	x	x
Flanders School	x	x	x
Lillie B. Haynes School	x	x	x
Niantic Center School	x	x	x
<b>East Windsor School District</b>	<b>X</b>	<b>X</b>	<b>X</b>
<i>Public</i>			
Broad Brook Elementary School	x	x	x
East Windsor High School	x	x	x
East Windsor Middle School	x	x	x
<b>Eastern Connecticut Regional Educational Service Center (EASTCONN)</b>	<b>X</b>	<b>X</b>	<b>X</b>
<i>Public</i>			
ACT Magnet School	x	x	x
EASTCONN Special Education	x	x	x
Early Childhood Center			x
Eastern Regional Academy	x		
Northeast Regional School	x	x	x
Quinebaug Valley Middle College High School	x	x	x
<i>Private</i>			
EastCONN Autism Program			x
<b>Eastford School District</b>	<b>X</b>	<b>X</b>	<b>X</b>
<i>Public</i>			
Eastford Elementary School	x	x	x
<b>Easton School District</b>	<b>X</b>	<b>X</b>	<b>X</b>
<i>Public</i>			
Helen Keller Middle School	x	x	x
Samuel Staples Elementary School	x	x	x
<b>Education Connection</b>		<b>X</b>	<b>X</b>
<i>Public</i>			
Education Connection Special Education		x	x

School District, School Type, School Name	2012	2013	2014
<b>Ellington School District</b>	<b>X</b>	<b>X</b>	<b>X</b>
<i>Public</i>			
Center School	x	x	
Crystal Lake School	x	x	x
Ellington High School	x	x	x
Ellington Middle School	x		x
Windermere Intermediate School		x	
Windermere School	x		x
<b>Elm City College Preparatory School District</b>	<b>X</b>	<b>X</b>	<b>X</b>
<i>Public</i>			
Elm City College Preparatory School	x	x	x
<b>Elm City Montessori School District</b>			<b>X</b>
<i>Private</i>			
Elm City Montessori School			x
<b>Enfield School District</b>	<b>X</b>	<b>X</b>	<b>X</b>
<i>Public</i>			
Enfield High School	x	x	x
Enfield Street School	x	x	x
Enrico Fermi High School	x	x	
Hazardville Memorial School	x	x	x
Head Start Program	x	x	x
Henry Barnard School	x	x	x
John F. Kennedy Middle School	x	x	x
Nathan Hale School	x		x
<i>Private</i>			
Enfield Montessori	x	x	x
Little Angels Pre-School	x	x	x
Natchaug Hospital School/Joshua Center-Enfield	x	x	
Saint Martha School	x	x	
St. Bernard Catholic School	x	x	x
St. Martha Nursery School			x
<b>Essex School District</b>	<b>X</b>	<b>X</b>	<b>X</b>
<i>Public</i>			
Essex Elementary School	x	x	x
<b>Explorations District</b>	<b>X</b>	<b>X</b>	<b>X</b>
<i>Public</i>			
Explorations	x	x	x

## Appendix 1. Listing of School Reporting, Connecticut, 2012-2014

School District, School Type, School Name	2012	2013	2014
<b>Fairfield School District</b>	<b>X</b>	<b>X</b>	<b>X</b>
<i>Public</i>			
Burr Elementary School	x	x	x
Dwight Elementary School	x	x	x
Fairfield Early Childhood Center	x	x	
Fairfield Ludlowe High School	x	x	x
Fairfield Warde High School	x	x	x
Fairfield Woods Middle School	x	x	x
Holland Hill School	x		x
Jennings School	x		x
McKinley School	x	x	x
Mill Hill School	x	x	x
North Stratfield School	x	x	x
Osborn Hill School	x	x	x
Riverfield School	x	x	x
Roger Ludlowe Middle School	x	x	x
Sherman School	x	x	x
Stratfield School	x	x	x
Tomlinson Middle School	x	x	x
<i>Private</i>			
Assumption Catholic School	x	x	x
Eagle Hill - Southport	x	x	x
Fairfield College Preparatory	x	x	x
Fairfield Country Day School	x	x	x
Giant Steps CT School	x		x
Notre Dame Catholic High School	x	x	x
St. Catherine Academy	x		x
St. Thomas Aquinas School	x	x	x
The Unquowa School	x	x	x
<b>Farmington School District</b>	<b>X</b>	<b>X</b>	<b>X</b>
<i>Public</i>			
East Farms School	x	x	x
Farmington Collaborative PK			x
Farmington High School	x	x	x
Irving A. Robbins Middle School		x	
Noah Wallace School	x	x	x
Union School	x	x	x
West District School	x	x	x

School District, School Type, School Name	2012	2013	2014
West Woods Upper Elementary School	x	x	x
<b>Franklin School District</b>	<b>X</b>	<b>X</b>	<b>X</b>
<i>Public</i>			
Franklin Elementary School	x	x	x
<b>Glastonbury School District</b>	<b>X</b>	<b>X</b>	<b>X</b>
<i>Public</i>			
Buttonball Lane School	x	x	x
Eastbury School	x	x	x
Gideon Welles School	x	x	x
Glastonbury High School	x	x	x
Hebron Avenue School	x	x	x
Hopewell School	x	x	x
Naubuc School	x	x	x
Nayaug Elementary School	x	x	x
Smith Middle School	x	x	x
<b>Granby School District</b>	<b>X</b>	<b>X</b>	<b>X</b>
<i>Public</i>			
Frank M. Kearns Primary School	x	x	x
Granby Memorial High School	x	x	x
Kelly Lane Intermediate School	x	x	x
Wells Road Intermediate School	x	x	x
<b>Greenwich School District</b>	<b>X</b>	<b>X</b>	<b>X</b>
<i>Public</i>			
Central Middle School	x	x	x
Cos Cob School	x	x	x
Eastern Middle School	x	x	x
Glenville School	x	x	x
Greenwich High School	x	x	x
Hamilton Avenue School	x	x	x
International School At Dundee	x	x	x
Julian Curtiss School	x	x	x
New Lebanon School	x	x	x
North Mianus School	x	x	x
North Street School	x	x	x
Old Greenwich School	x	x	x
Parkway School	x	x	x
Riverside School	x	x	x
Western Middle School	x	x	x



## Appendix 1. Listing of School Reporting, Connecticut, 2012-2014

School District, School Type, School Name	2012	2013	2014
<i>Private</i>			
Greenwich Catholic Elementary School	x	x	x
Westchester/Fairfield Hebrew Academy	x	x	x
<b>Griswold School District</b>	<b>X</b>	<b>X</b>	<b>X</b>
<i>Public</i>			
Griswold Elementary School	x	x	x
Griswold Middle School	x	x	x
Griswold Senior High School	x	x	x
<b>Groton School District</b>	<b>X</b>	<b>X</b>	<b>X</b>
<i>Public</i>			
Carl C. Cutler Middle School	x	x	x
Catherine Kolnaski	x	x	x
Charles Barnum School	x	x	x
Claude Chester School	x	x	x
Fitch Senior High School	x	x	x
Mary Morrison School	x	x	x
Northeast Academy	x	x	x
Pleasant Valley School	x	x	x
S. B. Butler School	x	x	x
West Side Middle School	x	x	x
<i>Private</i>			
Sacred Heart School Groton			x
<b>Guilford School District</b>	<b>X</b>	<b>X</b>	<b>X</b>
<i>Public</i>			
A. W. Cox School	x	x	x
Calvin Leete School	x	x	x
E. C. Adams Middle School	x	x	x
Guilford High School	x	x	x
Guilford Lakes School	x	x	x
Melissa Jones School	x	x	x
<b>Hamden School District</b>	<b>X</b>	<b>X</b>	<b>X</b>
<i>Public</i>			
Alice Peck Pre-K Program	x	x	x
Bear Path School	x	x	x
Church Street School	x	x	x
Dunbar Hill School	x	x	x
Hamden Collaborative Learning Center		x	x
Hamden High School	x	x	x

School District, School Type, School Name	2012	2013	2014
Hamden Middle School	x	x	x
Helen Street School	x		x
Ridge Hill School	x	x	x
Shepherd Glen School	x	x	x
Spring Glen School	x	x	x
West Woods School	x		
<i>Private</i>			
Hamden Hall Country Day School	x		
Lorraine D. Foster Day School	x		x
Sacred Heart Academy	x	x	x
Sacred Heart Manor Nursery and Kindergarten			x
St. Rita School	x		x
St. Stephen School	x	x	
<b>Hampton School District</b>	<b>X</b>	<b>X</b>	<b>X</b>
<i>Public</i>			
Hampton Elementary School	x	x	x
<b>Hartford School District</b>	<b>X</b>	<b>X</b>	<b>X</b>
<i>Public</i>			
Americas Choice at SAND	x	x	x
Annie Fisher Montessori Magnet School	x	x	
Annie-Fisher School	x	x	x
Batchelder School	x	x	x
Breakthrough II		x	x
Breakthrough Magnet School	x	x	x
Bulkeley High School	x	x	x
Burns Latino Studies Academy	x	x	x
Burr School	x	x	x
Capitol Preparatory Magnet School	x	x	x
Clark School	x	x	x
Classical Magnet School	x	x	x
Dr. Joseph Bellizzi Middle School	x	x	x
Dr. Ramon E. Betances School	x	x	x
Great Path Academy at MCC	x	x	x
Hartford Magnet Middle School	x	x	x
Hartford Pre-Kindergarten Magnet School		x	x
Hartford Public High School	x	x	x
High School Inc.	x	x	x
Hooker School	x	x	x

## Appendix 1. Listing of School Reporting, Connecticut, 2012-2014

School District, School Type, School Name	2012	2013	2014
IB Global Communications Academy	x	x	x
Kennelly School	x	x	x
Kinsella Magnet School	x	x	x
M. D. Fox Elementary School	x	x	x
M. L. King School	x	x	x
McDonough School	x	x	x
Milner Core Knowledge School	x		x
Moylan School	x	x	x
Naylor School	x	x	x
Noah Webster Micro Society School	x	x	x
OPPortunity High School	x	x	x
Parkville Community School	x	x	x
Pathways Academy of Technology and Design	x	x	x
Renzulli Academy		x	x
Sanchez School	x	x	x
Sarah J Rawson School	x	x	x
Simpson-Waverly School	x	x	x
Sports and Medical Sciences Academy	x	x	x
University High School	x	x	x
Weaver High School	x	x	x
West Middle School	x	x	x
Wish School	x		x
<i>Private</i>			
Covenant Preparatory School		x	x
Grace Academy	x	x	x
Hartford Area S.D.A. School		x	x
SS. Cyril and Methodius	x	x	
Saint Augustine School	x	x	x
Watkinson School	x	x	x
<b>Hartland School District</b>	<b>X</b>	<b>X</b>	<b>X</b>
<i>Public</i>			
Hartland Elementary School	x	x	x
<b>Hebron School District</b>	<b>X</b>	<b>X</b>	<b>X</b>
<i>Public</i>			
Gilead Hill School	x	x	x
<b>Highville Charter School District</b>		<b>X</b>	<b>X</b>
<i>Public</i>			
Highville Mustard Seed Charter School		x	x

School District, School Type, School Name	2012	2013	2014
<b>Integrated Day Charter School District</b>	<b>X</b>	<b>X</b>	<b>X</b>
<i>Public</i>			
Integrated Day Charter School	x	x	x
<b>Interdistrict School for Arts and Comm District</b>	<b>X</b>	<b>X</b>	<b>X</b>
<i>Public</i>			
Interdistrict School For Arts And Communication	x	x	x
<b>Jumoke Academy District</b>	<b>X</b>	<b>X</b>	<b>X</b>
<i>Public</i>			
Jumoke Academy	x	x	x
<b>Kent School District</b>	<b>X</b>	<b>X</b>	<b>X</b>
<i>Public</i>			
Kent Center School	x	x	x
<b>Killingly School District</b>	<b>X</b>	<b>X</b>	<b>X</b>
<i>Public</i>			
Goodyear Early Childhood Center	x	x	x
Killingly Central School	x	x	x
Killingly High School	x	x	x
Killingly Intermediate School	x	x	x
Killingly Memorial School	x	x	x
<i>Private</i>			
Natchaug Hospital School Joshua Center - Brooklyn	x		
St. James School Danielson	x	x	x
<b>Learn</b>	<b>X</b>	<b>X</b>	<b>X</b>
<i>Public</i>			
Dual Language Arts Academy		x	x
Learn Special Education		x	x
Marine Science Magnet High School		x	x
Multicultural Magnet School		x	x
The Friendship School		x	x
<b>Lebanon School District</b>	<b>X</b>	<b>X</b>	<b>X</b>
<i>Public</i>			
Lebanon Elementary School	x	x	x
Lebanon Middle School	x	x	x
Lyman Memorial High School	x	x	x

## Appendix 1. Listing of School Reporting, Connecticut, 2012-2014

School District, School Type, School Name	2012	2013	2014
<b>Ledyard School District</b>	<b>X</b>	<b>X</b>	<b>X</b>
<i>Public</i>			
Gales Ferry School		x	x
Gallup Hill School		x	x
Ledyard Center School	x	x	x
Ledyard High School	x	x	x
Ledyard Middle School	x	x	x
<b>Lisbon School District</b>	<b>X</b>	<b>X</b>	<b>X</b>
<i>Public</i>			
Lisbon Central School	x	x	x
<b>Litchfield School District</b>	<b>X</b>	<b>X</b>	<b>X</b>
<i>Public</i>			
Center School	x	x	x
Litchfield High School	x	x	x
Litchfield Intermediate School	x	x	x
<b>Madison School District</b>	<b>X</b>	<b>X</b>	<b>X</b>
<i>Public</i>			
Daniel Hand High School	x	x	x
Dr. Robert H. Brown Middle School	x	x	x
Island Avenue Elementary School	x	x	x
J. Milton Jeffrey Elementary School	x	x	x
Kathleen H. Ryerson Elementary School	x	x	x
Town Campus Learning Center	x	x	x
<i>Private</i>			
Our Lady of Mercy School	x	x	x
Shoreline Christian School	x		
The Country School	x	x	x
<b>Manchester School District</b>	<b>X</b>	<b>X</b>	<b>X</b>
<i>Public</i>			
Bentley Alternative Education	x	x	x
Bowers School	x	x	x
Buckley School	x	x	x
Elisabeth M. Bennet Academy	x	x	x
Highland Park School	x	x	x
Keeney School	x	x	x
Manchester Head Start	x		x
Manchester High School	x	x	x
Manchester Regional Academy	x	x	

School District, School Type, School Name	2012	2013	2014
Martin School	x	x	x
Robertson School	x	x	x
Verplanck School	x	x	x
Waddell School	x	x	x
Washington School	x	x	x
<i>Private</i>			
Assumption School	x	x	x
Community Child Guidance Clinic School	x	x	x
East Catholic High School	x	x	x
Saint Bridget School	x	x	x
Saint James	x	x	x
The Cornerstone Christian School	x	x	x
<b>Mansfield School District</b>	<b>X</b>	<b>X</b>	<b>X</b>
<i>Public</i>			
Annie E. Vinton School	x	x	x
Dorothy C. Goodwin School	x		
Mansfield Middle School	x		x
Southeast Elementary School	x	x	x
<i>Private</i>			
Natchaug Hospital School Clinical Day Treatment - Mansfield	x	x	
Oak Grove Montessori Elementary	x	x	
<b>Marlborough School District</b>	<b>X</b>	<b>X</b>	<b>X</b>
<i>Public</i>			
Elmer Thienes- Mary Hall Elementary School	x	x	x
<b>Meriden School District</b>	<b>X</b>	<b>X</b>	<b>X</b>
<i>Public</i>			
Benjamin Franklin School	x	x	x
Francis T. Maloney High School	x	x	x
Hanover School	x	x	x
Israel Putnam School	x	x	x
John Barry School	x	x	x
Lincoln Middle School	x	x	x
Nathan Hale School	x	x	x
Orville H. Platt High School	x	x	x
Roger Sherman School	x	x	x
Thomas Hooker School	x	x	x
Venture Academy			x

## Appendix 1. Listing of School Reporting, Connecticut, 2012-2014

School District, School Type, School Name	2012	2013	2014
Washington Middle School	x	x	x
<i>Private</i>			
Our Lady of Mount Carmel School	x	x	x
Saint Joseph School	x	x	x
Saint Stanislaus School	x	x	x
<b>Middletown School District</b>	<b>X</b>	<b>X</b>	<b>X</b>
<i>Public</i>			
Bielefield School	x	x	x
Farm Hill School	x	x	x
Keigwin Middle School	x	x	x
Lawrence School	x	x	x
MacDonough School	x	x	x
Middletown High School	x	x	x
Moody School	x	x	x
Snow School	x	x	x
Spencer School	x	x	x
Wesley School	x	x	x
<i>Private</i>			
Mercy High School	x	x	x
Saint Mary School	x		
St. John Paul II Regional School		x	x
St. John School	x		
Xavier High School	x	x	x
<b>Milford School District</b>	<b>X</b>	<b>X</b>	<b>X</b>
<i>Public</i>			
Calf Pen Meadow School	x		
East Shore Middle School	x	x	x
Harborside Middle School	x	x	x
J. F. Kennedy School	x	x	x
Jonathan Law High School	x	x	x
Joseph A. Foran High School	x	x	x
Live Oaks School	x	x	x
Mathewson School	x	x	x
Meadowside School	x		
Orange Avenue School	x	x	x
Orchard Hills School	x		
Pumpkin Delight School	x		
The Academy	x		x

School District, School Type, School Name	2012	2013	2014
West Shore Middle School	x	x	x
<i>Private</i>			
Berean Christian Academy		x	
Lauralton Hall	x	x	x
Saint Gabriel School	x	x	x
St. Mary School	x	x	x
<b>Monroe School District</b>	<b>X</b>	<b>X</b>	<b>X</b>
<i>Public</i>			
Fawn Hollow Elementary School	x	x	x
Jockey Hollow School	x	x	x
Masuk High School	x	x	x
Monroe Elementary School	x	x	x
Stepney Elementary School	x	x	x
<i>Private</i>			
St. Jude School	x	x	x
<b>Montville School District</b>	<b>X</b>	<b>X</b>	<b>X</b>
<i>Public</i>			
Dr. Charles E. Murphy School	x	x	x
Leonard J. Tyl Middle School	x	x	x
Mohegan School	x	x	x
Montville High School	x	x	x
Oakdale School	x	x	x
Palmer Academy	x	x	x
<b>Naugatuck School District</b>	<b>X</b>	<b>X</b>	<b>X</b>
<i>Public</i>			
Andrew Avenue School	x		x
Central Avenue School		x	x
Cross Street Intermediate School	x	x	x
Hillside Middle School	x	x	x
Hop Brook Elementary School	x	x	x
Maple Hill School	x	x	x
Naugatuck High School	x	x	x
Salem School	x	x	x
Western School	x	x	x
<i>Private</i>			
St. Francis - St. Hedwig	x	x	x

## Appendix 1. Listing of School Reporting, Connecticut, 2012-2014

School District, School Type, School Name	2012	2013	2014
<b>New Beginnings Inc., Family Academy District</b>	<b>X</b>	<b>X</b>	<b>X</b>
<i>Public</i>			
New Beginnings Inc., Family Academy	x	x	x
<b>New Britain School District</b>	<b>X</b>	<b>X</b>	<b>X</b>
<i>Public</i>			
Brook Side School		x	x
Chamberlain School	x	x	x
Diloreto Magnet School	x	x	x
Gaffney School	x	x	x
Hals Academy	x	x	x
Holmes School	x	x	x
Jefferson School	x	x	x
Lincoln School	x	x	x
New Britain High School	x	x	x
New Britain Transition Center	x	x	x
Northend School	x	x	x
Pulaski Middle School	x	x	x
Roosevelt Middle School	x	x	
Slade Middle School	x	x	x
Smalley Academy	x	x	x
Smith School	x	x	x
Vance School	x	x	x
<i>Private</i>			
CCMC (Connecticut Children's Medical Center School)		x	
Sacred Heart School	x	x	x
Saint John Paul II School	x	x	x
St. Matthew's Lutheran	x	x	x
<b>New Canaan School District</b>	<b>X</b>	<b>X</b>	<b>X</b>
<i>Public</i>			
East School	x	x	x
New Canaan High School	x	x	x
Saxe Middle School	x	x	x
South School	x	x	x
West School	x	x	x
<i>Private</i>			
Playland	x		

School District, School Type, School Name	2012	2013	2014
<b>New Fairfield School District</b>	<b>X</b>	<b>X</b>	<b>X</b>
<i>Public</i>			
Consolidated School	x	x	x
New Fairfield High School	x	x	x
New Fairfield Middle School	x	x	x
<b>New Hartford School District</b>	<b>X</b>	<b>X</b>	<b>X</b>
<i>Public</i>			
Ann Antolini School		x	x
Bakerville Consolidated School		x	x
New Hartford Elementary School		x	x
<b>New Haven School District</b>	<b>X</b>	<b>X</b>	<b>X</b>
<i>Public</i>			
Augusta Lewis Troup School	x	x	x
Barnard Environmental Magnet School	x	x	x
Beecher School	x	x	x
Benjamin Jepson Magnet School	x	x	x
Betsy Ross Arts Magnet School	x	x	x
Bishop Woods School	x	x	x
Celentano School	x	x	x
Christopher Columbus Academy	x	x	x
Clemente Leadership Academy	x	x	x
Clinton Avenue School	x	x	x
Conte/West Hills Magnet School	x	x	x
Cooperative High School	x	x	x
Davis 21st Century Magnet Elementary School	x	x	x
Domus Academy	x	x	x
East Rock Global Studies Magnet School	x	x	x
Edgewood School	x	x	x
Engineering - Science University Magnet School	x	x	x
Fair Haven School	x	x	x
High School In The Community	x	x	x
Hill Central Music Academy	x	x	x
Hill Regional Career High School	x	x	x
Hyde Leadership School	x	x	x
James Hillhouse High School	x	x	x
John C. Daniels	x	x	x
John S. Martinez School	x	x	x
Katherine Brennan/Clarence Rogers School	x	x	x

## Appendix 1. Listing of School Reporting, Connecticut, 2012-2014

School District, School Type, School Name	2012	2013	2014
King/Robinson Magnet School	x	x	x
Lincoln-Bassett School		x	x
Mauro-Sheridan Interdistrict Magnet School for Science, Technology and Communications	x	x	x
Metropolitan Business High School	x	x	x
Nathan Hale School	x	x	x
New Haven Academy	x	x	
New Horizons School for Higher Achievement	x	x	x
New Light High School		x	x
Polly T. McCabe Center		x	x
Quinnipiac School	x	x	x
Riverside Educational Academy	x	x	x
Ross/Woodward School	x	x	x
Sound School	x	x	x
Strong School	x	x	x
Truman School	x	x	x
West Rock Authurs Academy	x	x	x
Wexler/Grant Community School	x	x	x
Wilbur Cross High School	x	x	x
Worthington Hooker School	x	x	x
<i>Private</i>			
St. Aedan - St. Brendan Catholic School	x	x	x
St. Bernadette Catholic School	x	x	x
St. Francis & St. Rose of Lima School	x	x	
St. Francis Home			x
St. Martin de Porres Academy		x	x
St. Thomas's Day School		x	x
The Gan School			x
<b>New London School District</b>	<b>X</b>	<b>X</b>	<b>X</b>
<i>Public</i>			
Bennie Dover Jackson Middle School	x	x	x
Harbor School			x
Jennings School	x	x	x
Nathan Hale School	x	x	x
New London Clinical Day Program	x		
New London High School	x	x	x
Winthrop School	x	x	x
<i>Private</i>			

School District, School Type, School Name	2012	2013	2014
Solomon Schechter Academy	x	x	x
<b>New Milford School District</b>	<b>X</b>	<b>X</b>	<b>X</b>
<i>Public</i>			
Hill And Plain School	x	x	x
John Pettibone School	x	x	x
New Milford High School	x	x	x
Northville Elementary School	x	x	x
Sarah Noble Intermediate School	x	x	x
<i>Private</i>			
Faith Academy	x	x	x
<b>Newington School District</b>	<b>X</b>	<b>X</b>	<b>X</b>
<i>Public</i>			
Anna Reynolds School	x	x	
Elizabeth Green School	x	x	
John Paterson School	x	x	
John Wallace Middle School	x	x	x
Martin Kellogg Middle School	x	x	x
Newington High School	x	x	x
Ruth Chaffee School	x	x	
<i>Private</i>			
Emmanuel Christian Academy		x	
Saint Mary School		x	x
<b>Newtown School District</b>	<b>X</b>	<b>X</b>	
<i>Public</i>			
Hawley Elementary School	x	x	
Head O'Meadow Elementary School	x	x	
Middle Gate Elementary School	x	x	
Newtown High School	x	x	
Reed Intermediate School	x	x	
Sandy Hook Elementary School	x	x	
<i>Private</i>			
St. Rose School	x	x	
The Fraser Woods School	x	x	
<b>Norfolk School District</b>	<b>X</b>	<b>X</b>	<b>X</b>
<i>Public</i>			
Botelle Elementary School	x	x	x

## Appendix 1. Listing of School Reporting, Connecticut, 2012-2014

School District, School Type, School Name	2012	2013	2014
<b>North Branford School District</b>	<b>X</b>	<b>X</b>	<b>X</b>
<i>Public</i>			
Jerome Harrison School	x	x	x
North Branford High School	x	x	x
North Branford Intermediate School	x	x	x
<b>North Canaan School District</b>	<b>X</b>	<b>X</b>	<b>X</b>
<i>Public</i>			
North Canaan Elementary School	x	x	x
<b>North Haven School District</b>	<b>X</b>	<b>X</b>	<b>X</b>
<i>Public</i>			
Clintonville Elementary School	x	x	x
Green Acres Elementary School	x	x	x
Montowese Elementary School	x	x	x
North Haven High School	x	x	x
North Haven Middle School	x	x	x
Ridge Road Elementary School	x	x	x
<b>North Stonington School District</b>	<b>X</b>	<b>X</b>	<b>X</b>
<i>Public</i>			
North Stonington Elementary School	x	x	x
Wheeler High School	x	x	x
Wheeler Middle School	x	x	x
<i>Private</i>			
North Stonington Christian Academy	x	x	x
<b>Norwalk School District</b>	<b>X</b>	<b>X</b>	<b>X</b>
<i>Public</i>			
Brien McMahon High School	x	x	x
Brookside Elementary School	x	x	x
Columbus Elementary School	x	x	x
Cranbury Elementary School	x	x	x
Fox Run Elementary School	x	x	x
Jefferson Elementary School	x	x	x
Kendall Elementary School	x	x	x
Marvin Elementary School	x	x	x
Naramake Elementary School	x	x	x
Nathan Hale Middle School	x	x	x
Norwalk High School	x	x	x
Norwalk Pathways Academy	x	x	x
Ponus Ridge Middle School	x	x	x

School District, School Type, School Name	2012	2013	2014
Roton Middle School	x	x	x
Rowayton School	x	x	x
Silvermine Elementary School	x	x	x
Tracey School	x	x	x
West Rocks Middle School	x	x	x
Wolfpit School	x	x	x
<i>Private</i>			
All Saints Catholic School	x	x	x
Parkway Christian Academy	x	x	x
<b>Norwich Free Academy District</b>	<b>X</b>	<b>X</b>	<b>X</b>
<i>Public</i>			
Norwich Free Academy	x	x	x
<b>Norwich School District</b>	<b>X</b>	<b>X</b>	<b>X</b>
<i>Public</i>			
Bishop School	x	x	x
Case Street ELC			x
Deborah-Tennant Zinewicz School	x	x	
Hickory Street School	x	x	x
John B. Stanton School	x	x	x
John M. Moriarty School	x	x	x
Kelly Middle School	x	x	x
Samuel Huntington School	x	x	x
Teachers' Memorial Middle School	x	x	x
Thomas W. Mahan School	x	x	x
Uncas School	x	x	x
Veterans' Memorial School	x	x	x
Wequonnoc School	x	x	x
<i>Private</i>			
Sacred Heart School Taftville	x	x	x
St. Joseph School	x	x	
St. Patrick Cathedral School Norwich	x	x	x
Thames Valley-CDT/Natchaug Hospital		x	
Wildwood Christian School	x	x	x
<b>Odyssey Community School District</b>	<b>X</b>	<b>X</b>	<b>X</b>
<i>Public</i>			
Odyssey Community School	x	x	x

## Appendix 1. Listing of School Reporting, Connecticut, 2012-2014

School District, School Type, School Name	2012	2013	2014
<b>Old Saybrook School District</b>		<b>X</b>	<b>X</b>
<i>Public</i>			
Kathleen E. Goodwin School		x	x
Old Saybrook Middle School		x	x
Old Saybrook Senior High School		x	x
<i>Private</i>			
St. John School Old Saybrook		x	x
The Children's Tree Montessori School			x
<b>Orange School District</b>	<b>X</b>	<b>X</b>	<b>X</b>
<i>Public</i>			
Mary L. Tracy School	x	x	x
Peck Place School			x
Race Brook School			x
Turkey Hill School			X
<b>Oxford School District</b>	<b>X</b>	<b>X</b>	<b>X</b>
<i>Public</i>			
Great Oak School	x	x	x
Oxford High School	x	x	x
Quaker Farms School	x	x	x
<b>Plainfield School District</b>	<b>X</b>	<b>X</b>	<b>X</b>
<i>Public</i>			
Moosup Elementary School	x	x	x
Plainfield Central Middle School	x	x	x
Plainfield High School	x	x	x
Shepard Hill Elementary School	x	x	x
<b>Plainville School District</b>	<b>X</b>	<b>X</b>	<b>X</b>
<i>Public</i>			
Frank T. Wheeler School	x	x	x
Linden Street School	x	x	x
Louis Toffolon School	x	x	x
Middle School of Plainville	x	x	x
Plainville High School	x	x	x
<b>Plymouth School District</b>	<b>X</b>	<b>X</b>	<b>X</b>
<i>Public</i>			
Eli Terry Jr Middle School	x	x	x
Harry S. Fisher School	x	x	x
Plymouth Center School	x	x	x

School District, School Type, School Name	2012	2013	2014
Terryville High School	x	x	x
<b>Pomfret School District</b>	<b>X</b>	<b>X</b>	<b>X</b>
<i>Public</i>			
Pomfret Community School	x	x	x
<b>Portland School District</b>	<b>X</b>	<b>X</b>	<b>X</b>
<i>Public</i>			
Brownstone Intermediate School	x	x	x
Portland High School	x	x	x
Valley View School	x	x	x
<b>Preston School District</b>	<b>X</b>	<b>X</b>	<b>X</b>
<i>Public</i>			
Preston Plains School	x	x	x
Preston Veterans' Memorial School	x	x	x
<b>Putnam School District</b>	<b>X</b>	<b>X</b>	<b>X</b>
<i>Public</i>			
Putnam Elementary School	x	x	x
Putnam High School	x	x	x
Putnam Middle School	x	x	x
<b>Redding School District</b>	<b>X</b>	<b>X</b>	<b>X</b>
<i>Public</i>			
John Read Middle School	x	x	x
Redding Elementary School	x	x	x
<b>Regional School District 01</b>	<b>X</b>	<b>X</b>	<b>X</b>
<i>Public</i>			
Housatonic Valley Regional High School	x	x	x
<b>Regional School District 04</b>	<b>X</b>	<b>X</b>	<b>X</b>
<i>Public</i>			
John Winthrop Middle School	x	x	x
Valley Regional High School		x	
<b>Regional School District 05</b>	<b>X</b>	<b>X</b>	<b>X</b>
<i>Public</i>			
Amity Regional Junior High School: Bethany	x	x	x
Amity Regional Junior High School: Orange	x	x	x
Amity Regional Senior High School	x	x	x



## Appendix 1. Listing of School Reporting, Connecticut, 2012-2014

School District, School Type, School Name	2012	2013	2014
<b>Regional School District 06</b>	<b>X</b>	<b>X</b>	<b>X</b>
<i>Public</i>			
Goshen Center School	x	x	x
James Morris School	x	x	x
Wamogo Regional High School	x	x	x
Warren Elementary School	x	x	x
<b>Regional School District 07</b>	<b>X</b>	<b>X</b>	<b>X</b>
<i>Public</i>			
Northwestern Regional High School	x	x	x
Northwestern Regional Middle School	x	x	x
<b>Regional School District 08</b>	<b>X</b>	<b>X</b>	<b>X</b>
<i>Public</i>			
RHAM High School	x	x	x
RHAM Middle School	x	x	x
<b>Regional School District 09</b>	<b>X</b>		<b>X</b>
<i>Public</i>			
Joel Barlow High School	x		x
<b>Regional School District 10</b>	<b>X</b>	<b>X</b>	<b>X</b>
<i>Public</i>			
Har-Bur Middle School	x	x	x
Harwinton Consolidated School	x	x	x
Lake Garda Elementary School	x	x	x
Lewis S. Mills High School	x	x	x
<b>Regional School District 11</b>	<b>X</b>	<b>X</b>	<b>X</b>
<i>Public</i>			
Parish Hill High School	x	x	x
<b>Regional School District 12</b>	<b>X</b>	<b>X</b>	<b>X</b>
<i>Public</i>			
Booth Free School	x	x	x
Early Childhood Education Center	x		
Shepaug Valley High School	x	x	x
Shepaug Valley Middle School	x	x	x
The Burnham School	x	x	x
Washington Primary School	x	x	x
<b>Regional School District 13</b>	<b>X</b>	<b>X</b>	<b>X</b>
<i>Public</i>			
Coginchaug Regional High School	x	x	x
Frederick Brewster School	x	x	x

School District, School Type, School Name	2012	2013	2014
John Lyman School	x	x	x
Middlefield Memorial School	x	x	x
<i>Private</i>			
The Independent Day School	x	x	
<b>Regional School District 14</b>	<b>X</b>	<b>X</b>	<b>X</b>
<i>Public</i>			
Bethlehem Elementary School	x	x	x
Integrated Star Preschool Program	x	x	x
Mitchell Elementary School	x	x	x
Nonnewaug High School	x	x	x
Woodbury Middle School	x	x	x
<b>Regional School District 15</b>	<b>X</b>	<b>X</b>	<b>X</b>
<i>Public</i>			
Gainfield Elementary School	x	x	x
Long Meadow Elementary School		x	x
Memorial Middle School	x	x	x
Middlebury Elementary School		x	x
Pomperaug Regional High School		x	x
Pomperaug School		x	x
Rochambeau Middle School		x	x
<b>Regional School District 16</b>	<b>X</b>	<b>X</b>	<b>X</b>
<i>Public</i>			
Algonquin School	x	x	x
Laurel Ledge School	x	x	x
Long River Middle School	x	x	x
Woodland Regional High School	x	x	x
<b>Regional School District 17</b>	<b>X</b>	<b>X</b>	<b>X</b>
<i>Public</i>			
Burr District Elementary School	x	x	x
Haddam Elementary School	x	x	x
Haddam-Killingworth High School	x	x	x
Haddam-Killingworth Middle School	x	x	x
Killingworth Elementary School	x	x	x

## Appendix 1. Listing of School Reporting, Connecticut, 2012-2014

School District, School Type, School Name	2012	2013	2014
<b>Regional School District 18</b>	<b>X</b>	<b>X</b>	<b>X</b>
<i>Public</i>			
Center School			x
Lyme Consolidated School	x	x	x
Lyme-Old Lyme High School	x	x	x
Lyme-Old Lyme Middle School	x	x	x
Mile Creek School	x	x	x
<b>Regional School District 19</b>	<b>X</b>	<b>X</b>	<b>X</b>
<i>Public</i>			
E. O. Smith High School	x	x	x
<b>Ridgefield School District</b>	<b>X</b>	<b>X</b>	<b>X</b>
<i>Public</i>			
Barlow Mountain Elementary School	x	x	
Branchville Elementary School	x	x	x
East Ridge Middle School	x		x
Farmingville Elementary School		x	
Ridgebury Elementary School	x	x	
Ridgefield High School		x	x
Scotland Elementary School	x		x
Veterans Park Elementary School	x		
<i>Private</i>			
Ridgefield Academy	x	x	
St. Mary School - Ridgefield	x	x	x
<b>Rocky Hill School District</b>	<b>X</b>	<b>X</b>	<b>X</b>
<i>Public</i>			
Albert D. Griswold Junior High School	x	x	x
Myrtle H. Stevens School	x	x	x
Rocky Hill High School	x	x	x
West Hill School	x	x	x
<b>Salem School District</b>	<b>X</b>	<b>X</b>	<b>X</b>
<i>Public</i>			
Salem Elementary School	x	x	x
<b>Salisbury School District</b>	<b>X</b>	<b>X</b>	<b>X</b>
<i>Public</i>			
Salisbury Central School	x	x	x
<b>Scotland School District</b>	<b>X</b>	<b>X</b>	<b>X</b>
<i>Public</i>			
Scotland Elementary School	x	x	x

School District, School Type, School Name	2012	2013	2014
<b>Seymour School District</b>	<b>X</b>	<b>X</b>	<b>X</b>
<i>Public</i>			
Bungay School	x	x	x
Chatfield-LoPresti School	x	x	x
Seymour High School	x	x	x
Seymour Middle School	x	x	x
<b>Sharon School District</b>	<b>X</b>	<b>X</b>	<b>X</b>
<i>Public</i>			
Sharon Center School	x	x	x
<b>Shelton School District</b>	<b>X</b>	<b>X</b>	<b>X</b>
<i>Public</i>			
Booth Hill School	x	x	x
Elizabeth Shelton School	x	x	x
Long Hill School	x	x	x
Mohegan School	x	x	x
Perry Hill School	x	x	x
Shelton High School	x	x	x
Sunnyside School	x	x	x
<i>Private</i>			
St. Joseph School - Shelton	x	x	x
St. Lawrence Schools	x	x	x
<b>Sherman School District</b>	<b>X</b>	<b>X</b>	<b>X</b>
<i>Public</i>			
Sherman School	x	x	x
<b>Side By Side Charter School District</b>	<b>X</b>		
<i>Public</i>			
Side By Side Charter School	x		
<b>Simsbury School District</b>	<b>X</b>	<b>X</b>	<b>X</b>
<i>Public</i>			
Central School	x	x	x
Henry James Memorial School	x	x	x
Latimer Lane School	x	x	x
Simsbury High School	x	x	x
Squadron Line School	x	x	x
Tariffville School	x	x	x
Tootin' Hills School	x	x	x
<i>Private</i>			
Saint Mary's School	x	x	x

## Appendix 1. Listing of School Reporting, Connecticut, 2012-2014

School District, School Type, School Name	2012	2013	2014
The Cobb School, Montessori	x	x	x
The Master's School	x	x	x
<b>Somers School District</b>	<b>X</b>	<b>X</b>	<b>X</b>
<i>Public</i>			
Mabelle B. Avery Middle School	x	x	x
Somers Elementary School	x		x
Somers High School	x	x	x
<b>South Windsor School District</b>	<b>X</b>	<b>X</b>	<b>X</b>
<i>Public</i>			
Eli Terry School	x	x	x
Orchard Hill School	x	x	x
Philip R. Smith School	x	x	x
Pleasant Valley School	x	x	x
South Windsor High School	x	x	x
Timothy Edwards School	x	x	x
Wapping Elementary School	x	x	x
<b>Southington School District</b>	<b>X</b>	<b>X</b>	<b>X</b>
<i>Public</i>			
Alternative Education	x	x	x
Derynoski Elementary School	x	x	x
Flanders School	x	x	x
Hatton School	x	x	x
John F. Kennedy Middle School	x	x	x
Joseph A. Depaolo Middle School	x	x	x
Plantsville School	x	x	x
South End School	x	x	x
Southington High School	x	x	x
Strong School	x	x	x
Thalberg School	x	x	x
Urbin T. Kelley School	x	x	x
<i>Private</i>			
Saint Dominic School	x	x	x
St. Thomas Catholic School	x	x	x
<b>Sprague School District</b>	<b>X</b>	<b>X</b>	<b>X</b>
<i>Public</i>			
Sayles Elementary School	x	x	x
<i>Private</i>			
St. Joseph School Baltic	x	x	x

School District, School Type, School Name	2012	2013	2014
<b>Stafford School District</b>	<b>X</b>	<b>X</b>	<b>X</b>
<i>Public</i>			
Stafford High School	x	x	x
Stafford Middle School	x	x	x
Staffordville School	x	x	x
West Stafford School	x	x	x
<i>Private</i>			
St. Edward School Stafford Springs	x	x	
<b>Stamford Academy District</b>	<b>X</b>	<b>X</b>	<b>X</b>
<i>Public</i>			
Stamford Academy	x	x	x
<b>Stamford School District</b>	<b>X</b>	<b>X</b>	<b>X</b>
<i>Public</i>			
APPLES Early Childhood Education Center		x	x
Alternate Routes to Success			x
Cloonan School	x	x	x
Davenport Ridge School	x	x	x
Dolan School	x	x	x
Hart School	x	x	x
Julia A. Stark School	x	x	x
K. T. Murphy School	x	x	x
Newfield School	x	x	x
Northeast School	x	x	x
Rippowam Middle School	x	x	x
Rogers School	x	x	x
Roxbury School	x	x	x
Scofield Middle School	x	x	x
Springdale School	x	x	
Stamford High School	x	x	x
Stillmeadow School	x	x	x
The Academy of Information Technology	x	x	x
Toquam Magnet School	x	x	x
Turn of River School	x	x	x
Westhill High School	x	x	x
Westover School	x	x	x
<i>Private</i>			
All About Kids	x	x	
Bi-Cultural Day School	x	x	x

## Appendix 1. Listing of School Reporting, Connecticut, 2012-2014

School District, School Type, School Name	2012	2013	2014
Bright Beginnings	x	x	
Bright Horizons First Stamford Place	x	x	
Bright Horizons High Ridge	x	x	
Bright Minds Daycare	x	x	
Brookdale Nursery School	x	x	
Building Blocks	x	x	
Canaan Ridge School	x	x	x
Creative Care Child Center	x	x	
First Presbyterian Church Nursery School	x	x	x
First United Methodist Nursery School	x	x	x
Gan Yeladim Preschool	x	x	x
Glenbrook Community Center Play School		x	x
Grace Christian School	x	x	x
Gray Farms Nursery School	x	x	x
Holy Spirit School	x	x	x
Italian Center Nursery School	x	x	x
JCC Sara Walker Nursery School	x	x	x
Kinder Place JCC	x	x	x
King & Low-Heywood Thomas School	x	x	x
Little Folks Playschool	x	x	
Mark of Excellence Pre-School	x	x	x
Mother's Little Helper	x	x	
Mrs. Bee's Learn and Play, LLC	x	x	
Noah's Ark Nursery School	x	x	x
Our Lady Star of the Sea School	x	x	x
Our Lady of Grace Nursery School and Kindergarten	x	x	x
Rising Star Learning Center	x		
Sacred Heart Elementary	x		
Shining Little Stars	x	x	
St. Cecilia Elementary School	x	x	x
St. Celment Preschool		x	x
Stamford Museum and Nature Center	x	x	x
The Baby Cottage I, Inc.	x	x	
The Baby Cottage II, Inc.	x	x	
The Children's School	x	x	x
The Learning Center at Piper's Hill	x	x	x
The Long Ridge School	x	x	x

School District, School Type, School Name	2012	2013	2014
The Mead School	x	x	
Trinity Catholic High School	x	x	x
Trinity Catholic Middle School	x	x	x
UBS Child Development Center	x	x	
Union Memorial Preschool	x	x	x
Villa Divino Amore Nursery School	x	x	x
Villa Maria Education Center	x	x	x
Waterside School	x	x	x
<b>Sterling School District</b>	<b>X</b>	<b>X</b>	<b>X</b>
<i>Public</i>			
Sterling Community School	x	x	x
<b>Stonington School District</b>	<b>X</b>	<b>X</b>	<b>X</b>
<i>Public</i>			
Deans Mill School	x	x	x
Mystic Middle School	x	x	x
Pawcatuck Middle School	x	x	x
Special Needs Preschool Program		x	x
Stonington High School	x	x	x
West Broad Street School	x	x	x
West Vine Street School	x	x	x
<i>Private</i>			
Pine Point School	x	x	x
St. Michael School Pawcatuck	x	x	x
<b>Stratford School District</b>	<b>X</b>	<b>X</b>	<b>X</b>
<i>Public</i>			
Bunnell High School	x	x	x
Chapel School	x	x	x
David Wooster Middle School	x	x	x
Franklin School	x	x	x
Harry B. Flood Middle School	x	x	x
Lordship School	x	x	x
Nichols School	x	x	x
Second Hill Lane School	x	x	x
Stratford Academy	x	x	
Stratford Academy - Honeyspot House	x	x	x
Stratford High School	x	x	x
Whitney School		x	x
Wilcoxson School	x	x	x

## Appendix 1. Listing of School Reporting, Connecticut, 2012-2014

School District, School Type, School Name	2012	2013	2014
<i>Private</i>			
St. James Regional School	x		x
St. Mark School	x	x	x
<b>Suffield School District</b>	<b>X</b>	<b>X</b>	<b>X</b>
<i>Public</i>			
A. Ward Spaulding School	x	x	x
Suffield High School	x	x	x
Suffield Middle School	x	x	x
<b>The Bridge Academy District</b>	<b>X</b>	<b>X</b>	<b>X</b>
<i>Public</i>			
The Bridge Academy		x	x
<b>The Gilbert School District</b>	<b>X</b>	<b>X</b>	<b>X</b>
<i>Public</i>			
The Gilbert School	x	x	x
<b>Thomaston School District</b>	<b>X</b>	<b>X</b>	<b>X</b>
<i>Public</i>			
Black Rock School	x	x	x
Thomaston Center School		x	
Thomaston High School	x	x	x
<b>Thompson School District</b>	<b>X</b>	<b>X</b>	<b>X</b>
<i>Public</i>			
Mary R. Fisher Elementary School	x	x	x
Thompson Middle School	x	x	x
Tourtellotte Memorial High School	x	x	x
<i>Private</i>			
St. Joseph School North Grosvenordale	x		x
<b>Tolland School District</b>	<b>X</b>	<b>X</b>	<b>X</b>
<i>Public</i>			
Birch Grove Primary School	x	x	x
Tolland High School	x	x	x
Tolland Middle School	x	x	x
<i>Private</i>			
St. Matthew Pre-School Tolland			x
<b>Torrington School District</b>	<b>X</b>	<b>X</b>	<b>X</b>
<i>Public</i>			
East School	x		x
Forbes School	x		x
Southwest School	x	x	x

School District, School Type, School Name	2012	2013	2014
Torrington School	x		x
Torrington High School	x		x
Torrington Middle School	x		x
Vogel-Wetmore School	x		x
<i>Private</i>			
St. Peter/St. Francis			x
Torrington Christian Academy			x
<b>Trumbull School District</b>	<b>X</b>	<b>X</b>	<b>X</b>
<i>Public</i>			
Booth Hill School	x	x	x
Daniels Farm School	x	x	x
Frenchtown Elementary School	x	x	
Hillcrest Middle School	x	x	x
Jane Ryan School	x	x	x
Madison Middle School	x	x	x
Middlebrook School	x	x	x
Tashua School	x	x	x
Trumbull Early Childhood Education Center	x	x	x
Trumbull High School	x	x	x
<i>Private</i>			
Christian Heritage School	x	x	x
St. Catherine of Siena School	x	x	x
St. Joseph High School	x	x	x
St. Theresa School	x	x	x
<b>Union School District</b>	<b>X</b>	<b>X</b>	<b>X</b>
<i>Public</i>			
Union Elementary School	x	x	x
<b>Vernon School District</b>	<b>X</b>	<b>X</b>	<b>X</b>
<i>Public</i>			
Center Road School	x	x	x
Lake Street School	x	x	x
Loveland Hill School			x
Maple Street School	x	x	x
Northeast School	x	x	x
Rockville High School	x	x	x
Skinner Road School	x	x	x
Vernon Center Middle School	x	x	x

## Appendix 1. Listing of School Reporting, Connecticut, 2012-2014

School District, School Type, School Name	2012	2013	2014
<b>Voluntown School District</b>		<b>X</b>	<b>X</b>
<i>Public</i>			
Voluntown Elementary School		x	x
<b>Wallingford School District</b>	<b>X</b>	<b>X</b>	<b>X</b>
<i>Public</i>			
Cook Hill School	x	x	x
Dag Hammarskjold School	x	x	x
Evarts C. Stevens School	x	x	x
Highland School	x	x	x
James H. Moran Middle School	x	x	x
Lyman Hall High School	x	x	x
Mark T. Sheehan High School	x	x	x
Moses Y. Beach School	x	x	x
<i>Private</i>			
Holy Trinity School	x	x	x
<b>Waterbury School District</b>	<b>X</b>	<b>X</b>	<b>X</b>
<i>Public</i>			
B. W. Tinker School	x	x	x
Bucks Hill School	x	x	x
Bunker Hill School	x	x	x
Career Academy High School		x	x
Carrington School	x	x	x
Crosby High School	x	x	x
Driggs School	x	x	x
Duggan Elementary School	x	x	x
Enlightenment School	x		x
F. J. Kingsbury School	x	x	x
Gilmartin School	x	x	x
H. S. Chase School	x	x	x
Hopeville School	x	x	x
John F. Kennedy High School	x	x	x
Maloney Interdistrict Magnet School	x		x
Margaret M. Generali Elementary School	x	x	x
Michael F. Wallace Middle School	x		x
North End Middle School	x	x	x
Reed Elementary School	x	x	x
Regan School	x	x	x
Rotella Interdistrict Magnet School	x	x	x

School District, School Type, School Name	2012	2013	2014
Sprague School	x	x	x
State Street School	x		x
Walsh School	x	x	x
Washington School	x	x	x
Waterbury Arts Magnet School (High)	x	x	
Waterbury Arts Magnet School (Middle)	x	x	x
Wendell L. Cross School	x	x	x
West Side Middle School	x	x	x
Wilby High School	x	x	x
Woodrow Wilson School	x	x	x
<i>Private</i>			
Blessed Sacrament Catholic School	x	x	x
Children's Community School	x	x	x
Holy Cross High School	x	x	x
Our Lady of Mount Carmel School	x	x	x
Sacred Heart High School	x	x	x
Saints Peter and Paul School	x	x	x
St. Mary Elementary School	x	x	x
Yeshiva K'Tana of Waterbury	x	x	x
<b>Waterford School District</b>	<b>X</b>	<b>X</b>	<b>X</b>
<i>Public</i>			
Clark Lane Middle School	x	x	x
Great Neck Elementary School	x	x	x
Oswegatchie Elementary School	x	x	x
Quaker Hill Elementary School	x	x	x
Waterford High School	x	x	x
<b>Watertown School District</b>	<b>X</b>	<b>X</b>	<b>X</b>
<i>Public</i>			
Fletcher W. Judson School			x
John Trumbull Primary School	x	x	x
Swift Middle School	x	x	x
Watertown High School	x	x	x
<i>Private</i>			
St. John the Evangelist School	x	x	x
St. Mary Magdalen School	x	x	x

## Appendix 1. Listing of School Reporting, Connecticut, 2012-2014

School District, School Type, School Name	2012	2013	2014
<b>West Hartford School District</b>	<b>X</b>	<b>X</b>	<b>X</b>
<i>Public</i>			
Aiken School	x	x	x
Braeburn School	x	x	x
Bristow Middle School	x	x	x
Bugbee School	x	x	x
Charter Oak School	x	x	x
Conard High School	x	x	x
Duffy School	x	x	x
Hall High School	x	x	x
King Philip Middle School	x	x	x
Morley School	x	x	x
Norfeltd School	x	x	x
Sedgwick Middle School	x	x	x
Smith School	x	x	x
Webster Hill School	x	x	x
Whiting Lane School	x	x	x
Wolcott School	x	x	x
<i>Private</i>			
Hebrew High School of New England	x	x	x
Intensive Education Academy	x	x	x
Kingswood-Oxford School	x	x	x
Montessori School of Greater Hartford			x
Northwest Catholic High School	x	x	x
Renbrook School	x	x	x
Saint Brigid School	x	x	x
Saint Timothy Middle School	x	x	x
Solomon Schechter Day School	x	x	x
St. Thomas the Apostle	x	x	x
<b>West Haven School District</b>	<b>X</b>	<b>X</b>	<b>X</b>
<i>Public</i>			
Alma E. Pagels School	x	x	x
Edith E. Mackrille School	x	x	x
Forest School	x	x	x
Harry M. Bailey Middle School	x		
May V. Carrigan Middle School	x	x	x
Savin Rock Community School	x	x	x
Seth G. Haley School	x	x	x

School District, School Type, School Name	2012	2013	2014
Washington School	x	x	x
West Haven High School	x	x	x
<i>Private</i>			
Notre Dame High School	x	x	x
Our Lady of Victory School	x	x	x
St. Lawrence School	x	x	x
<b>Westbrook School District</b>	<b>X</b>	<b>X</b>	<b>X</b>
<i>Public</i>			
Daisy Ingraham School	x	x	x
Westbrook High School	x	x	x
Westbrook Middle School	x	x	x
<b>Weston School District</b>	<b>X</b>	<b>X</b>	<b>X</b>
<i>Public</i>			
Hurlbutt Elementary School	x	x	x
Weston High School	x	x	x
Weston Middle School	x	x	x
<b>Westport School District</b>	<b>X</b>	<b>X</b>	<b>X</b>
<i>Public</i>			
Bedford Middle School	x	x	x
Coleytown Elementary School	x	x	x
Coleytown Middle School	x	x	x
Green's Farms School	x	x	x
King's Highway Elementary School	x	x	x
Long Lots School	x	x	x
Saugatuck Elementary School	x	x	x
Staples High School	x	x	x
Stepping Stones Preschool	x		x
<i>Private</i>			
Greens Farms Academy		x	x

## Appendix 1. Listing of School Reporting, Connecticut, 2012-2014

School District, School Type, School Name	2012	2013	2014
<b>Wethersfield School District</b>	<b>X</b>	<b>X</b>	<b>X</b>
<i>Public</i>			
Alfred W. Hanmer School	x	x	x
Charles Wright School	x	x	x
Emerson-Williams School	x	x	x
Highcrest School	x		x
Samuel B. Webb Elementary School	x	x	x
Silas Deane Middle School	x	x	
Wethersfield High School	x	x	x
<i>Private</i>			
Corpus Christi School	x	x	x
<b>Willington School District</b>	<b>X</b>	<b>X</b>	<b>X</b>
<i>Public</i>			
Center School	x	x	x
Hall Memorial School	x	x	x
<b>Wilton School District</b>	<b>X</b>	<b>X</b>	<b>X</b>
<i>Public</i>			
Middlebrook School	x	x	x
Tilford W. Miller School	x	x	x
Wilton High School	x	x	x
<i>Private</i>			
Our Lady of Fatima Regional School	x	x	x
The Montessori School	x	x	x
<b>Winchester School District</b>			<b>X</b>
<i>Public</i>			
Batcheller Elementary School			x
<b>Windham School District</b>	<b>X</b>	<b>X</b>	<b>X</b>
<i>Public</i>			
Natchaug School	x	x	x
North Windham School	x	x	x
W. B. Sweeney School	x	x	x
Windham Center School	x	x	x
Windham Early Childhood Center Columbia	x	x	
Windham Early Childhood Prospect Street	x		x
Windham High School	x	x	x

School District, School Type, School Name	2012	2013	2014
Windham Middle School	x	x	x
<i>Private</i>			
Natchaug Hospital School Clinical Day Treatment - Windham	x	x	
St. Mary-St. Joseph School Willimantic	x	x	x
<b>Windsor Locks School District</b>	<b>X</b>	<b>X</b>	<b>X</b>
<i>Public</i>			
North Street School	x	x	x
Windsor Locks High School	x	x	x
Windsor Locks Middle School	x	x	x
<b>Windsor School District</b>	<b>X</b>	<b>X</b>	<b>X</b>
<i>Public</i>			
Oliver Ellsworth School	x	x	x
Poquonock Elementary School	x	x	x
Sage Park Middle School	x	x	x
Windsor High School	x	x	x
<i>Private</i>			
St. Gabriel School	x	x	x
<b>Wolcott School District</b>	<b>X</b>	<b>X</b>	<b>X</b>
<i>Public</i>			
Alcott School	x	x	x
Frisbie School	x	x	x
Tyrrell Middle School	x	x	x
Wakelee School	x	x	x
Wolcott High School	x	x	x
<b>Woodbridge School District</b>	<b>X</b>	<b>X</b>	<b>X</b>
<i>Public</i>			
Beecher Road School	x	x	x
<b>Woodstock Academy District</b>	<b>X</b>	<b>X</b>	<b>X</b>
<i>Public</i>			
Woodstock Academy	x	x	x
<b>Woodstock School District</b>	<b>X</b>	<b>X</b>	<b>X</b>
<i>Public</i>			
Woodstock Elementary School	x	x	x
Woodstock Middle School	x	x	x