

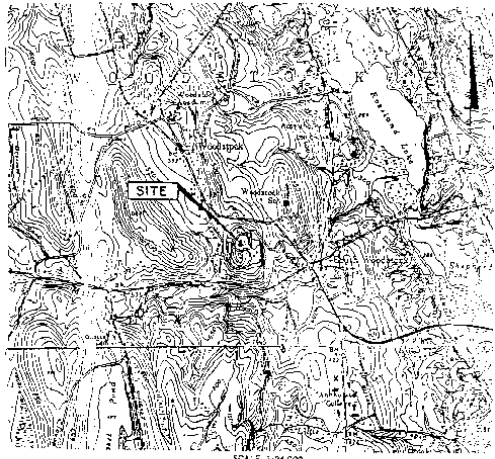
Health Information on Hazardous Waste Sites

LINEMASTER SWITCH CORPORATION

The Linemaster Switch Corporation site is one of fifteen Superfund hazardous waste sites in Connecticut. The Connecticut Department of Public Health and Addiction Services, in cooperation with the Agency for Toxic Substances and Disease Registry, is investigating the possibility that contamination at this site might result in adverse human health effects in the neighboring community. The document containing this assessment is referred to as a public health assessment and has been produced from data provided by the Connecticut Department of Environmental Protection, the U.S. Environmental Protection Agency, and other groups involved with the management of this site; community health data; and concerns of the community. If you have specific concerns about the health implications of this site, please write or call Kenny Foscue at the Connecticut Department of Public Health and Addiction Services, Division of Environmental Epidemiology and Occupational Health, 150 Washington Street, Hartford, Connecticut 06106, (203) 240-9022. For more information about clean-up activities, please contact the U.S. Environmental Protection Agency (EPA) at the address and phone number on page 4 of this factsheet.

SITE SUMMARY

The Linemaster Switch Corporation site is located on Plaine Hill Road in Woodstock, CT. The 92 acre site is bounded by Plaine Hill Road, State Route 171, and State Route 169 (see site map).



History

Linemaster Switch Corporation began manufacturing operations in 1952. Trichloroethene (TCE), paint thinner, and other chemicals were used in the manufacturing process. The estimated amount of TCE used between 1969 and 1979 was approximately 100 to 600 gallons per year. In 1980, the Connecticut Department of Environmental Protection (DEP) conducted an inspection at the site, which found that on-site disposal of dried paint solids had occurred. The U.S. Environmental Protection Agency (EPA) conducted site inspections in 1985 and 1986. Sampling conducted during

MAP SOURCE:
UNITED STATES GEOLOGICAL SURVEY TOPOGRAPHICAL
MAP PUTNAM QUADRANGLE
CONNECTICUT, 7.5-MINUTE SERIES S1985
PHOTO REPRODUCED 1970.

FIGURE NO. 1
RUSSELL & NELL
MANCHESTER, CONNECTICUT
SITE LOCATION
LINEMASTER SWITCH CORP.
WOODSTOCK, CT.
PUB. NO. 85-66 DATE 2/20/80 SCALE 1"=2000'

that time revealed that on-site and off-site private wells were contaminated with volatile organic compounds (VOCs), primarily TCE. Based on these results, bottled water was provided to the facility, one on-site residence, and several off-site residences that have been impacted with site-related contaminants. Since that time, three on-site wells, the Woodstock town hall well, and three residence wells have been equipped with filter systems. In 1987, a Consent Order was signed by U.S. EPA and Linemaster Switch Corporation instructing the company to develop actions to clean up the contamination, provide an on and off-site ground water monitoring program, and provide clean water for the contaminated well users. The site was placed on the Superfund National Priorities List (NPL) on February 21, 1990. A Record of Decision (ROD) was signed by the EPA on July 21 1993. The ROD is the official EPA record of the cleanup remedy decided on for the site. The ROD plans are in the "Site Activities and Plans" section on page 3 of this factsheet. In 1990, a preliminary health assessment was performed by ATSDR. A public health assessment of the site will be finalized in 1994.

CONTAMINATION

Ground water and soil, both on site and off-site, were contaminated with VOCs, primarily trichloroethene. Three on-site drinking water wells, including a restaurant, were contaminated. Several off-site wells, including one that served an apartment building, were also found to be contaminated. Another source of ground water well contamination in the area, not attributed to the Linemaster Switch Corporation, was a leaking underground fuel tank at the Woodstock Public School. Between 1991 and 1992, benzene, methyl tert butyl ether (MTBE), and other gasoline components were found in eight private residential wells. Naturally occurring arsenic has also been found in over twenty wells in the area above levels of concern.

HEALTH CONCERNS

- Residents of eight private homes, employees of the Woodstock Town Hall and volunteers of the Fire Department were exposed to site-related compounds from drinking contaminated drinking water. One well had contamination levels that may increase the risk of cancer.
- People living in approximately eight residences south of the leaking underground fuel tank at the Woodstock Public School were exposed to benzene and MTBE. No adverse health effects are expected.

■ People in the area may have been exposed to naturally occurring arsenic through past, present and potential future drinking of arsenic contaminated well water. Several wells had arsenic levels that could slightly increase the risk of cancer.

■ Lead was found in the drinking water of several homes, most likely from plumbing fixtures.

What You Should Know

§ ATSDR has concluded that the site is a Public Health Hazard, because of the health risks from past and potential future exposures to hazardous substances in groundwater.

§ Carbon filters have been installed at all residences whose wells were contaminated. The drinking water is safe, given proper maintenance of those filters.

§ Residences whose wells were found to contain high levels of naturally occurring arsenic should continue to treat their drinking water. Nearby residents who are concerned should have their water tested for arsenic.

§ Residents with lead in their drinking water should take measures to prevent exposures, such as using cold water for cooking and drinking and running tap water 3 minutes before using, or treating the water.

SITE ACTIVITY STATUS AND PLANS

⌚ The Linemaster Switch Corporation installed a groundwater containment system to try to keep contaminated groundwater on-site. Also, an air stripping tower was installed to remove VOCs from the ground water collected by the containment system.

⌚ A Record of Decision (ROD) was completed for the Linemaster site. The clean-up plan includes:

- soil vapor extraction (air is pumped through the soil to remove the contaminants)

- air stripping to remove VOCs from the water

- carbon adsorption to filter both air and water before discharging into environment

- long-term site monitoring

⌚ The CT DEP and CT DPHAS will continue to monitor private wells found to be contaminated.

⌚ ATSDR and DPHAS will evaluate health data periodically to consider additional health actions.

⌚ CT DPHAS will conduct environmental health education

for local public health officials, the local medical community and local citizens.

Q CT DPHAS is planning a well survey of the Town of Woodstock to investigate the extent of arsenic contamination in the private wells.

Q CTDPHAS and ATSDR will continue to evaluate the need for additional health actions.

INFORMATION SOURCES

HEALTH: If you have health concerns related to the site, please contact your physician.

Explain your situation. Please let your doctor know the substances to which you may have been exposed. Area physicians and nurses have or will be provided information about the site contaminants and their potential health effects. Your physician may contact the Northeast Health District or the Connecticut Department of Public Health and Addiction Services with any questions.

Northeast Health District
182 South Main St.
Brooklyn, CT 06234
203-774-7350

State of Connecticut
Department of Public Health
and Addiction Services
Environmental Epidemiology and
Occupational Health Section
150 Washington St.
Hartford, CT 06106

566-8167

Agency for Toxic Substances
and Disease Registry Region I
160 Westview St.
Lexington, MA 02173
(617) 860-4619

WATER QUALITY: If you have concerns about the quality of water around the Linemaster Switch Corporation site, contact the Northeast Health District or the Department of Environmental Protection, Bureau of Water Management.

CT Dept. of Environmental
Protection
Permitting and Enforcement
Remediation Division
79 Elm St.
Hartford, CT 06106-5127
(203) 566-5486

SUPERFUND: Information regarding the federal Superfund process may be obtained from:

Elise Jakabhazy
EPA Remedial Project Manager
U.S. Environmental Protection
Agency
JFK Federal Building (HEC-
CAN6)
Boston, MA 02201-2211
(617) 573-5760

(Prepared by the State of Connecticut Department of Public Health and Addiction Services, Environmental Epidemiology and Occupational Health. This factsheet is funded in part by funds from the Comprehensive Environmental Response, Compensation, and Liability Act trust fund through a cooperative agreement with the Agency for Toxic Substances and Disease Registry, Public Health

Service, U.S. Department of Health
and Human Services.)

(August 1994)