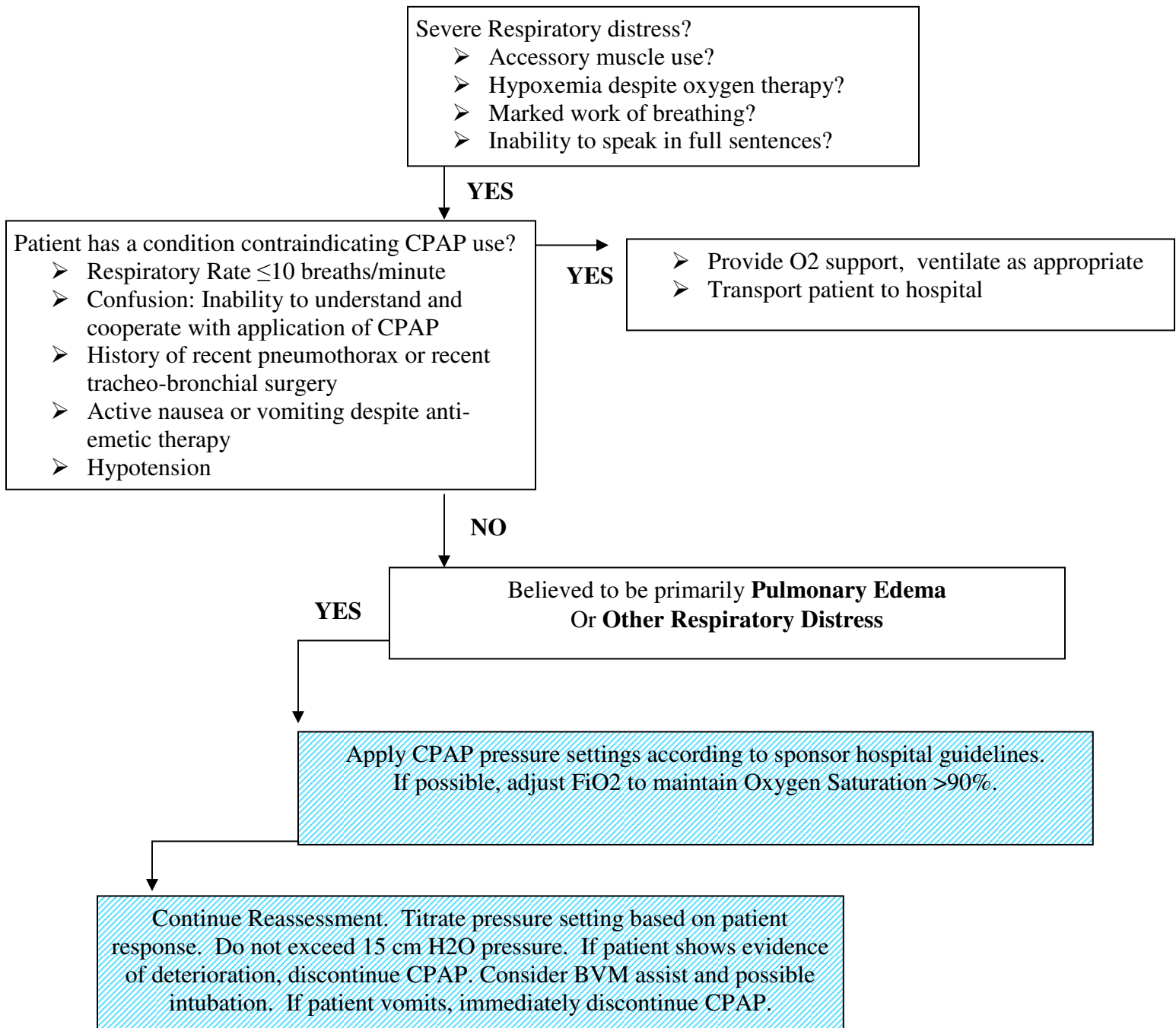


# CONNECTICUT CONTINUOUS POSITIVE AIRWAY PRESSURE (CPAP) ADULT GUIDELINE



If equipment allows, continue indicated nebulized bronchodilators in-line with CPAP. It is allowable to briefly interrupt CPAP to continue administration of 'spray' formulations of nitrates (if indicated)

- Notify receiving hospital early to allow preparations for continued CPAP/BiPAP.