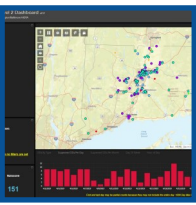


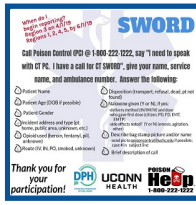
Instructions to access ODMAP

7.16.19

ODMAP and SWORD information can be found by clicking on an image.



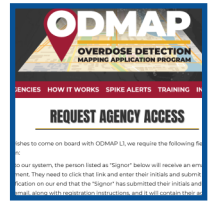
What is ODMAP?



What is SWORD?



Is this available to my Agency?



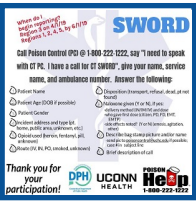
Instruction to access ODMAP

What is ODMAP?



High Intensity Drug Trafficking Area's (HIDTA) Overdose Detection Mapping Application Program (ODMAP) is an online application to map near real-time suspected overdose surveillance data across jurisdictions. It is a tool which supports public health and public safety efforts to immediately mobilize a response to a sudden increase, or spike in suspected overdose events.

What is SWORD?



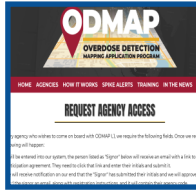
The Statewide Opioid Reporting Directive (SWORD) initiative by the Department of Public Health's Office of Emergency Medical Services has mandated reporting by Emergency Medical Services (EMS) to the CT Poison Control Center (CPCC) of every suspected overdose call regardless of whether naloxone was given. Once the information is entered into the HIDTA ODMAP by CPCC, it can be viewed in real-time by your department or district.

Is this available to my Agency?



ODMAP is available to government (state, local, federal, or tribal) agencies that serve the interests of public health and safety. Agencies includes local health, hospitals, emergency medical service organizations, law enforcement and fire departments. ODMAP is available cost-free for each agency who signs a participation agreement to protect the data collected and viewed. Access to a map of Connecticut is provided to allow for viewing of the de-identified data, as well as allowing thresholds, or overdose awareness and response spike alerts. Recently, due to the information reported in near real-time from EMS through CPCC to ODMAP, the Hartford Health and Human Services Department and the Hartford Police Department were able to deploy harm reduction measures (fentanyl test strips) in the City of Hartford when a fatal batch of fentanyl was identified. This helped to curtail the fatal overdoses being happening at the time.

Instructions to access ODMAP



1. Request agency access by submitting the [online form here](#)
2. ODMAP will contact you via email with a link to a participation agreement for electronic signature
3. The agency will receive via email an Agency code and instructions to create an account
4. Create an account and designate an Agency Administrator for the spike alert level (1)
5. The Agency Administrator will grant the map level (2) user accounts by clicking "Manager" - "User Accounts" - "Level 2 Users" and entering the new user name, email and phone number and clicking "Create"