

STATE OF CONNECTICUT

DEPARTMENT OF PUBLIC HEALTH

Deidre S. Gifford, MD, MPH
Acting Commissioner



Ned Lamont
Governor
Susan Bysiewicz
Lt. Governor

ENVIRONMENTAL HEALTH AND DRINKING WATER BRANCH

EHS Circular Letter 2021-62

To: Local Directors of Health
Certified Food Inspectors

From: Lori J. Mathieu, Public Health Branch Chief

A handwritten signature in blue ink that reads "Lori J. Mathieu '21".

Date: August 20, 2021

Subject: Resources, Guidance, and Emergency Response for Natural Disasters

The Food Protection Program (FPP) has previously provided local health departments with guidance for food establishments affected by emergencies and natural disasters, such as hurricanes, in the form of circular letters, reference manuals, an emergency investigation kit, and training. Local health departments may find the information and guidance materials referenced below helpful when responding to food establishments affected by power outages, water issues, structural damage, and consumer inquiries.

Resources for Local Health Departments

The following documents can be found on the Food Protection Website

<http://www.ct.gov/dph/foodprotection>

- Power Outages
 - Guidelines for Foodservice Establishments to Safely Reopen after a Power Outage
 - Also available in Albanian, Chinese, Greek, Polish and Portuguese, and Spanish
 - Generator Use During a Power Outage
- Water Emergencies
 - Water Emergencies at Food Establishments
 - E. coli Contamination/ Water Supply Interruption At Food Establishments
 - Interim Measures for E. coli Contamination/ Water Supply Interruption at Food Establishments
 - Also available in Brazilian Portuguese, Chinese, Greek, Polish, and Spanish
 - Summary of Procedures by Local Health Departments for Food Establishments during a Water Emergency
 - Sample Water Emergency Closure Placard
 - Sample Order/Notice Of Violation
 - Bulk Water Hauling at Food Establishments
 - Guidelines for Reopening of Food Establishments after a Water Emergency



Phone: (860) 509-7297 • Fax: (860) 706-5854
Telecommunications Relay Service 7-1-1
410 Capitol Avenue, P.O. Box 340308, MS #11FDP
Hartford, Connecticut 06134-0308
www.ct.gov/dph

Affirmative Action/Equal Opportunity Employer

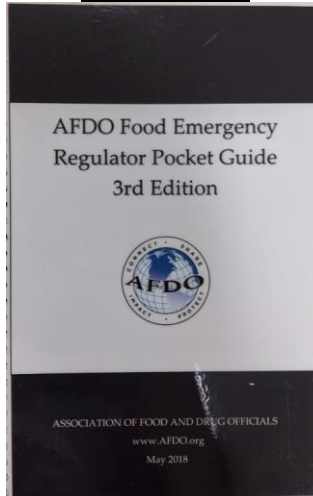


Handbooks and Books regarding Emergencies, Outbreaks, and Diseases
Current Version

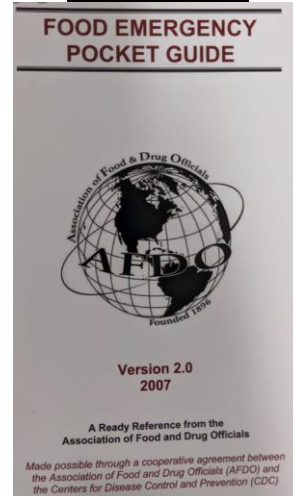
Food Emergency Pocket Guide

Current Version 3.0 - a ready reference from the Association of Food and Drug Officials.

This pocket guide is a “ready reference” to deal with emergencies dealt with by food regulators.

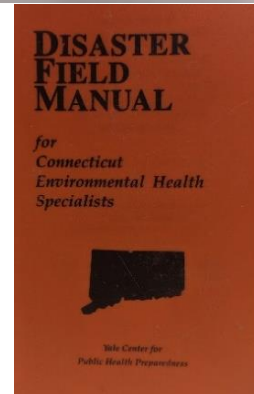
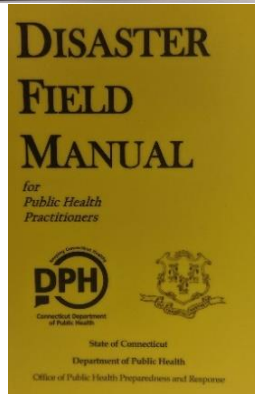


Previous Version



Disaster Field Manual for CT Environmental Health Specialists & Public Health Practitioners

This manual is intended to assist trained environmental health personnel to respond to a major disaster within the structure of emergency operations.



Control of Communicable Diseases Manual

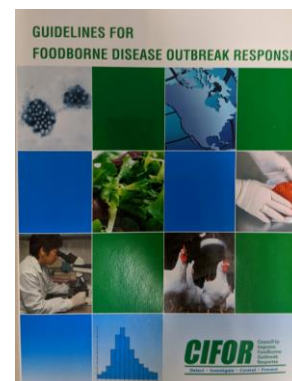
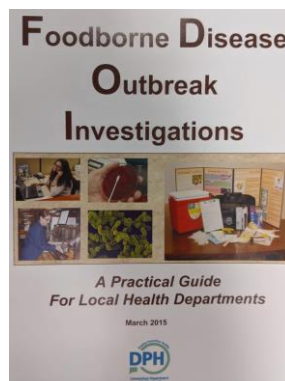
The manual covers 140 diseases and groups of diseases of importance to communicable disease hunters and researchers. The text is a resource responsive to the needs of the global health community.



Outbreak Investigation Manuals

CT DPH Foodborne Disease Outbreak Manual

CIFOR Guidelines for Foodborne Disease Outbreak Response



OTHER RESOURCES:

Center for Disease Control Prevention
Natural Disasters and Severe Weather
<http://emergency.cdc.gov/disasters/>

U.S. Food and Drug Administration
Food Safety during Emergencies
<https://www.fda.gov/food/recalls-outbreaks-emergencies/food-safety-during-emergencies>

US Department of Agriculture
Food Defense and Emergency Response
<https://www.fsis.usda.gov/wps/portal/fsis/topics/food-defense-defense-and-emergency-response>

CT COOPERATIVE EXTENSION SYSTEM
(877) 486-6271
<http://www.extension.uconn.edu/>

Food Establishment Guidance:

- **Boiling water is NOT an acceptable interim measure for food establishments**
- Establishments with water and/or power interruptions should stop operations immediately. It is recommended that they report these issues to their local health department as soon as they have become aware of the interruptions.
- Local health jurisdictions are urged to conduct follow-up investigations (telephone, on site) with food establishments to determine if the emergency has interrupted power, water or other utility services, which may impede their ability to prepare food safely.
 - The director of health may need to issue a blanket closure order for food establishments. The closure provides an interim measure of protection to the public while authorities determine what is required to resume safe operation.
- A food establishment that was ordered or otherwise required to cease operations may not re-open until the local director of health has rescinded the closure order and granted authorization to resume operation.
- Per Section 19-13-B42 (n) of the Regulations of Connecticut State Agencies, conditions at food establishments may require that food be embargoed or destroyed if deemed to be not “clean, wholesome, free from spoilage, free from adulteration and misbranding and safe for human consumption.” Attached are the food destruction, embargo, and embargo release forms. The FDA guidance for industry Restaurants and Grocers Reopening after Hurricanes and Flooding available at <https://www.fda.gov/food/food-safety-during-emergencies/restaurants-and-grocers-reopening-after-hurricanes-and-flooding> provides useful information for inspectors.

Following a hurricane there are potential health concerns that can be created by the disruptions caused by the hurricane. The force of wind alone can cause tremendous devastation, toppling trees and downing power lines. If power is interrupted, the resultant loss of mechanical refrigeration can adversely affect the quality and wholesomeness of food. Torrential rains often cause flooding, that may expose food, food contact surfaces, food equipment and people to human and animal waste or debris that may contain pathogens.

Assessments will be needed at food establishments to determine if the emergency has impeded their ability to prepare and serve food safely. An assessment should consider the impact on the food establishments’ critical infrastructure and the availability of alternative procedures that can be used to meet the CT regulations and ensure consistent compliance with food safety requirements.

- Potable Water – If the potability of the water system supplying water to the food establishment is questionable, the establishment should be closed until the local health department can verify that an alternate interim approved water source has been approved.

- Electricity – The response to a power outage or interruption depends on many factors including duration of power loss, ambient air temperature, type of equipment, volume of food, etc. Guidance can be provided to determine whether potentially hazardous foods need to be discarded. However, if there are uncertainties about time and temperature, food should always be discarded.
- Structural Integrity of Facility
 - Condition of the physical structure of the establishment should be in compliance with local building and occupancy codes in a manner that does not compromise the safe and sanitary handling of food and equipment and the safety of employees and that there are no opportunities for water/moisture, or pests, to enter the facility.
 - All mud and debris should be removed from inside and outside of premises (if outside standing water is contaminated soil may also be contaminated).

Food and water related questions regarding food establishments should be directed to the Department of Public Health Food Protection Program at 860-509-7297.

c: Tracey Weeks, Coordinator, Food Protection Program, DPH
Francesca Provenzano, Office of Public Health Preparedness & Response, DPH
Jim Vannoy, Acting Chief, Environmental Health Section, DPH
Heather Aaron, MPH, LNHA, Deputy Commissioner, DPH

Attachment 1

Procedures for an Embargo/ Destruction of Food

An embargo of food is a hold order that takes suspect food out of circulation before it is served or consumed until the safety, wholesomeness, and source of the food can be determined.

Destruction of food would occur if there were obvious filth, decomposition, adulteration, or physical damage, which makes the food product unsafe or unwholesome.

The food establishment owner/operator should be made aware of the public health concerns about the safety and wholesomeness of the food in question and must understand why embargo or food destruction is the best course of action. By identifying the public health issues and concern, the health department should attempt to persuade the food establishment owner/operator to voluntarily hold or not use the food pending additional information and/or testing, or to voluntarily destroy the food.

The food establishment owner/operator should be made aware of the potential liability if s/he attempts to serve food, which has been found to be questionable by the health authority. In most cases, the embargo or destruction of food is agreed to by the food establishment owner/operator and is done voluntarily under the supervision of the health authority.

The Connecticut General Statutes (CGS) and CT Public Health Code (PHC) allow a local department of health to remove food from sale is:

1. PHC Section 19-13-B42 (n) – All food and drink in food service establishments shall be from sources approved or considered satisfactory by the director of health; and shall be clean, wholesome, free from spoilage, free from adulteration and misbranding and safe for human consumption. Any food or drink considered unsafe for human consumption shall be destroyed or disposed of in a manner satisfactory to the director of health.
2. PHC Section 19-13-B40 – All food and drink shall be clean wholesome, free from spoilage and so prepared as to be safe for human consumption.
3. PHC Section 19-13-B65. Sale of shellfish-approved areas. (A) No shellfish shall be sold in the State of Connecticut for food unless taken from areas certified by the State Department of Agriculture or, if taken from outside sources, from areas approved by the authorities having jurisdiction and secured from shellfish dealers endorsed by the United States Public Health Service for interstate shipment.
4. PHC Section 19-13-B1 of the Public Health Code states as public nuisances: Bakeries, restaurants and other places where food is prepared or served that are not kept in a clean and sanitary condition; or in which persons who have any communicable disease are employed; or for which suitable toilet facilities are not provided; or in which there is evidence that rats, mice or vermin are present. Spoiled or diseased meats, whether exposed and offered for sale or being transported or kept for sale.
5. PHC Section 19a-206 – Director of Health shall examine into all nuisances and sources of filth injurious to the public health...and cause removal and abatement.
6. CGS Section 21a-62 – Director of Health may cause food to be examined. When results indicate deleterious or foreign ingredient, or adulteration, information is to be published in local paper. Expenses of analysis and publishing are to be borne by the person from whom samples were obtained. If food or article is pure or free, the town/city is to pay the expense for the analysis.
7. CGS Section 53-319 – Defines spoiled meat.
8. Code of Federal Regulations Uniform Food, Drug and Cosmetic Act define adulteration, referenced in the CGS.
9. CGS Section 21a-101 – Department of Consumer Protection defines adulterated food.

General Statutes allow municipalities to adopt local ordinances and regulations to protect the public health and safety.

Embargo or Holding

1. If possible, this should be done voluntarily. If not, orders by the Director of Health will be necessary.
2. A complete inventory is made.
3. A representative sample is selected for laboratory analysis. Emergencies may warrant issuance of orders by the Director of Health if necessary.

Based on the laboratory analysis or additional information, the embargo/hold order would be eliminated and the food released or condemned.

Destruction

1. A determination is made that the food is not safe for human consumption.
2. A complete inventory is made of items to be destroyed.
3. A determination is made whether the foods have any use as animal feed or in some other product (such as oils).
4. If food is to be destroyed, the following methods may be used:
5. Disposal at an approved incinerator/landfill
6. Discoloration with a dye
7. Use of ammonia, bleach, pine oil.
8. Destruction is supervised.
9. A report is filed.
10. It is best if the person, firm, etc. assume the responsibility of the destruction. The health department should recommend procedures, which the individual voluntarily agrees to do. If the destruction cannot be done voluntarily, it must be ordered if necessary.

Disposal of Suspect Foods

When the investigation confirms that a commercial food is confirmed positive for a hazardous or toxic substance, ensure that no further problems will be created by inadequate disposal of the contaminated food. Determine what disposal method the processor intends. Consult with appropriate personnel about the proper disposal to minimize adverse public health consequences. Determine if the disposal method may adversely impact the public health by:

1. Re-entering the human food chain
2. Re-entering the environment

Under certain circumstances, such as a suspected incident of intentional contamination, it may not be possible or feasible to confirm the presence of contamination. In these instances, the Local Health authority will use its discretion as to the safety and disposition of the food. Do not release the product retained, or on hold until an acceptable plan has been determined.

EMBARGO FORM

DATE: _____

(Firm)

(Location)

(Town)

The article(s) described below are hereby ordered detained and embargoed. Said article(s) shall not be removed or disposed of by sale or any other means unless permission for removal or disposal is given by a representative of this department or the court.

Quantity	Volume/Weight	Name and Description of Food Items	Reason Embargoed

This action is taken in compliance with Sections 19a-206 and 21a-62 of the Connecticut General Statutes and Sections 19-13-B1, 19-13-B2, 19-13-B40, 19-13-B42, 19-13-B48 and 19-13-B49 of the Public Health Code of the State of Connecticut.

Inspector's Signature

By: _____
Signature of Representative Receiving Notice

Title: _____

EMBARGO RELEASE FORM

DATE: _____

(Agency)

(Location)

(Town)

I, _____, a representative of the _____
(Health Department)

hereby release the following article(s) which were embargoed on _____.

Quantity	Volume/Weight	Name and Description of Food Items

Reason for release of the food items: _____

Inspector's Signature

Signature of Representative Receiving Notice

Title

FOOD DESTRUCTION FORM

DATE: _____

(Firm)

(Location)

(Town)

I have on the _____ day of _____ 20____ voluntarily destroyed, or caused to be destroyed, the food items described below. Said food items were found to be from an unapproved source, unwholesome, adulterated or otherwise unfit for human consumption. Destruction and final disposition of said food items has been done in a manner approved by:

(Name)

(Title)

I hereby release the _____, and its members, agents, and representatives from any and all liability.

Quantity	Volume /Weight	Name and Description of Food Items	Reason Destroyed

Inspector's Signature

By: _____

Title: _____