



CONNECTICUT DEPARTMENT OF PUBLIC HEALTH  
STATE WIC PROGRAM



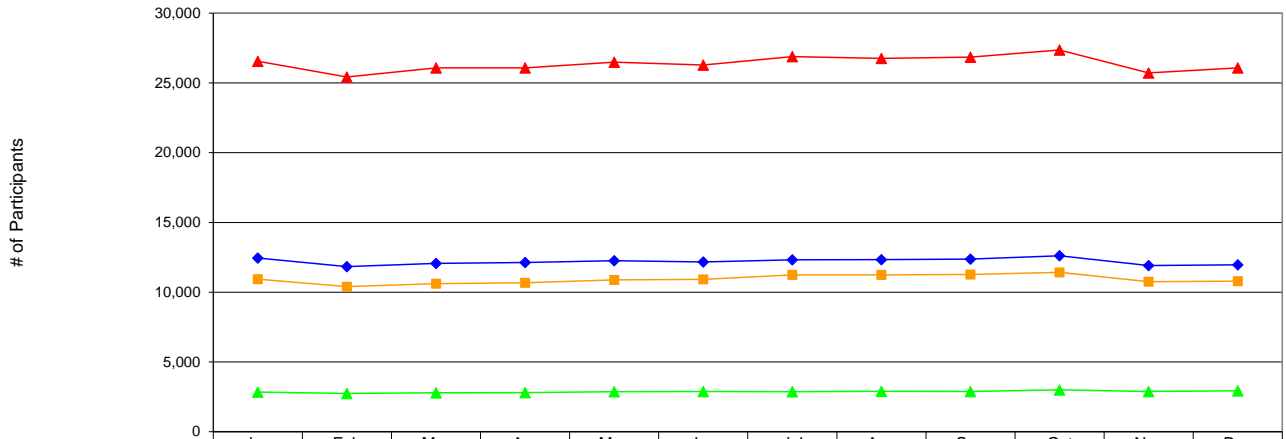
CONNECTICUT WIC PROGRAM - STATEWIDE TOTALS  
Monthly WIC Participation by Race / Ethnicity  
& Participant Category, 2014 <sup>a</sup>

MONTHLY PARTICIPATION BY RACE / ETHNICITY & CATEGORY	QUARTER 1			QUARTER 2			QUARTER 3			QUARTER 4			AVERAGE	%
	Jan	Feb	Mar	Apr	May	Jun	Jul	Aug	Sep	Oct	Nov	Dec		
<b>HISPANIC</b>	<b>26,560</b>	<b>25,428</b>	<b>26,081</b>	<b>26,075</b>	<b>26,493</b>	<b>26,291</b>	<b>26,890</b>	<b>26,762</b>	<b>26,856</b>	<b>27,362</b>	<b>25,716</b>	<b>26,083</b>	<b>26,383</b>	<b>50.4%</b>
Women	5,242	5,035	5,155	5,204	5,257	5,215	5,331	5,295	5,329	5,483	5,088	5,175	5,234	19.8%
- Pregnant	2,638	2,479	2,603	2,649	2,727	2,664	2,791	2,727	2,685	2,788	2,510	2,549	2,651	50.6%
- Breastfeeding (BF)	1,314	1,277	1,310	1,344	1,315	1,302	1,315	1,344	1,403	1,426	1,369	1,382	1,342	25.6%
- Fully breastfeeding	315	319	316	320	308	313	336	338	367	374	348	354	334	24.9%
- Partially breastfeeding	999	958	994	1,024	1,007	989	979	1,006	1,036	1,052	1,021	1,028	1,008	75.1%
- Postpartum (not BF)	1,290	1,279	1,242	1,211	1,215	1,249	1,225	1,224	1,241	1,269	1,209	1,244	1,242	23.7%
Infants	6,523	6,272	6,390	6,393	6,417	6,404	6,497	6,427	6,357	6,498	6,167	6,266	6,384	24.2%
- Fully breastfed	323	327	327	329	328	334	372	369	382	392	379	383	354	5.5%
- Partially breastfed	1,853	1,749	1,790	1,804	1,799	1,787	1,801	1,787	1,795	1,854	1,720	1,761	1,792	28.1%
- Formula fed only	4,347	4,196	4,273	4,260	4,290	4,283	4,324	4,271	4,180	4,252	4,068	4,122	4,239	66.4%
Children	14,795	14,121	14,536	14,478	14,819	14,672	15,062	15,040	15,170	15,381	14,461	14,642	14,765	56.0%
<b>NON-HISPANIC WHITE</b>	<b>12,449</b>	<b>11,835</b>	<b>12,062</b>	<b>12,124</b>	<b>12,261</b>	<b>12,166</b>	<b>12,321</b>	<b>12,340</b>	<b>12,370</b>	<b>12,612</b>	<b>11,911</b>	<b>11,961</b>	<b>12,201</b>	<b>23.3%</b>
Women	3,085	2,927	3,020	3,080	3,140	3,125	3,167	3,164	3,200	3,329	3,055	3,066	3,113	25.5%
- Pregnant	1,324	1,239	1,329	1,428	1,476	1,502	1,521	1,455	1,446	1,507	1,337	1,307	1,406	45.2%
- Breastfeeding (BF)	830	807	848	820	839	813	826	834	851	870	813	817	831	26.7%
- Fully breastfeeding	435	437	450	450	475	465	473	462	465	452	418	428	451	54.3%
- Partially breastfeeding	395	370	398	370	364	348	353	372	386	418	395	389	380	45.7%
- Postpartum (not BF)	931	881	843	832	825	810	820	875	903	952	905	942	877	28.2%
Infants	3,294	3,162	3,188	3,174	3,157	3,072	3,127	3,110	3,077	3,144	3,032	3,076	3,134	25.7%
- Fully breastfed	361	358	385	393	406	393	395	397	399	392	355	370	384	12.2%
- Partially breastfed	554	512	548	524	519	499	528	537	549	551	520	541	532	17.0%
- Formula fed only	2,379	2,292	2,255	2,257	2,232	2,180	2,204	2,176	2,129	2,201	2,157	2,165	2,219	70.8%
Children	6,070	5,746	5,854	5,870	5,964	5,969	6,027	6,066	6,093	6,139	5,824	5,819	5,953	48.8%
<b>NON-HISPANIC BLACK</b>	<b>10,940</b>	<b>10,401</b>	<b>10,616</b>	<b>10,675</b>	<b>10,889</b>	<b>10,917</b>	<b>11,249</b>	<b>11,242</b>	<b>11,268</b>	<b>11,426</b>	<b>10,756</b>	<b>10,794</b>	<b>10,931</b>	<b>20.9%</b>
Women	2,352	2,263	2,310	2,356	2,412	2,447	2,534	2,508	2,463	2,581	2,439	2,414	2,423	22.2%
- Pregnant	1,166	1,110	1,153	1,182	1,263	1,292	1,353	1,317	1,244	1,276	1,155	1,120	1,219	50.3%
- Breastfeeding (BF)	572	570	571	586	555	540	560	581	573	643	630	629	584	24.1%
- Fully breastfeeding	179	164	154	150	128	138	143	157	145	170	154	138	152	26.0%
- Partially breastfeeding	393	406	417	436	427	402	417	424	428	473	476	491	433	74.0%
- Postpartum (not BF)	614	583	586	588	594	615	621	610	646	662	654	665	620	25.6%
Infants	2,857	2,738	2,772	2,762	2,760	2,767	2,879	2,881	2,920	2,977	2,816	2,884	2,834	25.9%
- Fully breastfed	164	138	133	130	118	128	129	134	133	151	127	122	134	4.7%
- Partially breastfed	758	750	754	770	759	730	766	758	770	791	748	783	761	26.9%
- Formula fed only	1,935	1,850	1,885	1,862	1,883	1,909	1,984	1,989	2,017	2,035	1,941	1,979	1,939	68.4%
Children	5,731	5,400	5,534	5,557	5,717	5,703	5,836	5,853	5,885	5,868	5,501	5,496	5,673	51.9%
<b>NON-HISPANIC, OTHER RACE(S)</b>	<b>2,840</b>	<b>2,742</b>	<b>2,793</b>	<b>2,802</b>	<b>2,865</b>	<b>2,877</b>	<b>2,871</b>	<b>2,899</b>	<b>2,886</b>	<b>3,003</b>	<b>2,875</b>	<b>2,935</b>	<b>2,866</b>	<b>5.5%</b>
Women	529	514	534	533	554	538	535	538	564	578	553	556	544	19.0%
- Pregnant	232	228	234	241	251	245	240	255	249	263	250	257	245	45.1%
- Breastfeeding (BF)	173	175	186	178	174	176	178	184	200	197	189	186	183	33.7%
- Fully breastfeeding	62	58	61	59	59	56	56	55	59	63	57	62	59	32.2%
- Partially breastfeeding	111	117	125	119	115	120	122	129	141	134	132	124	124	67.8%
- Postpartum (not BF)	124	111	114	114	129	117	117	99	115	118	114	113	115	21.2%
Infants	727	701	708	699	727	738	739	746	756	789	750	734	735	25.6%
- Fully breastfed	70	68	64	59	60	66	70	68	70	63	62	76	66	9.0%
- Partially breastfed	208	210	216	225	229	242	239	233	238	267	236	212	230	31.3%
- Formula fed only	449	423	428	415	438	430	430	445	448	459	452	446	439	59.7%
Children	1,584	1,527	1,551	1,570	1,584	1,601	1,597	1,615	1,566	1,636	1,572	1,645	1,587	55.4%
<b>TOTAL PARTICIPANTS</b>	<b>52,789</b>	<b>50,406</b>	<b>51,552</b>	<b>51,676</b>	<b>52,508</b>	<b>52,251</b>	<b>53,331</b>	<b>53,243</b>	<b>53,380</b>	<b>54,403</b>	<b>51,258</b>	<b>51,773</b>	<b>52,381</b>	<b>100.0%</b>
Women	11,208	10,739	11,019	11,173	11,363	11,325	11,567	11,505	11,556	11,971	11,135	11,211	11,314	21.6%
- Pregnant	5,360	5,056	5,319	5,500	5,717	5,703	5,905	5,754	5,624	5,834	5,252	5,233	5,521	48.8%
- Breastfeeding (BF)	2,889	2,829	2,915	2,928	2,883	2,831	2,879	2,943	3,027	3,136	3,001	3,014	2,940	26.0%
- Fully breastfeeding	991	978	981	979	970	972	1,008	1,012	1,036	1,059	977	982	995	33.9%
- Partially breastfeeding	1,898	1,851	1,934	1,949	1,913	1,859	1,871	1,931	1,991	2,077	2,024	2,032	1,944	66.1%
- Postpartum (not BF)	2,959	2,854	2,785	2,745	2,763	2,791	2,783	2,808	2,905	3,001	2,882	2,964	2,853	25.2%
Infants	13,401	12,873	13,058	13,028	13,061	12,981	13,242	13,164	13,110	13,408	12,765	12,960	13,088	25.0%
- Fully breastfed	918	891	909	911	912	921	966	968	984	998	923	951	938	7.2%
- Partially breastfed	3,373	3,221	3,308	3,323	3,306	3,258	3,334	3,315	3,352	3,463	3,224	3,297	3,315	25.3%
- Formula fed only	9,110	8,761	8,841	8,794	8,843	8,802	8,942	8,881	8,774	8,947	8,618	8,712	8,835	67.5%
Children	28,180	26,794	27,475	27,475	28,084	27,945	28,522	28,574	28,714	29,024	27,358	27,602	27,979	53.4%
<b>UNKNOWN RACE OR ETHNICITY</b>	<b>0</b>	<b>0</b>	<b>0</b>	<b>0</b>	<b>0</b>	<b>0</b>	<b>0</b>	<b>0</b>	<b>0</b>	<b>0</b>	<b>0</b>	<b>0</b>	<b>0</b>	
<b>GRAND TOTAL</b>	<b>52,789</b>	<b>50,406</b>	<b>51,552</b>	<b>51,676</b>	<b>52,508</b>	<b>52,251</b>	<b>53,331</b>	<b>53,243</b>	<b>53,380</b>	<b>54,403</b>	<b>51,258</b>	<b>51,773</b>	<b>52,381</b>	

Cont... →

<sup>a</sup> Data source: Statewide WIC Information System (SWIS),  
Racial / Ethnic Participation (WICP3002).

Connecticut WIC  
 Monthly Participation by Race / Ethnicity  
 2014



	Jan	Feb	Mar	Apr	May	Jun	Jul	Aug	Sep	Oct	Nov	Dec
▲ HISPANIC	26,560	25,428	26,081	26,075	26,493	26,291	26,890	26,762	26,856	27,362	25,716	26,083
◆ NON-HISPANIC WHITE	12,449	11,835	12,062	12,124	12,261	12,166	12,321	12,340	12,370	12,612	11,911	11,961
■ NON-HISPANIC BLACK	10,940	10,401	10,616	10,675	10,889	10,917	11,249	11,242	11,268	11,426	10,756	10,794
▲ NON-HISPANIC, OTHER RACE(S)	2,840	2,742	2,793	2,802	2,865	2,877	2,871	2,899	2,886	3,003	2,875	2,935

<sup>a</sup> Data source: Statewide WIC Information System (SWIS),  
 Racial / Ethnic Participation (WICP3002).