

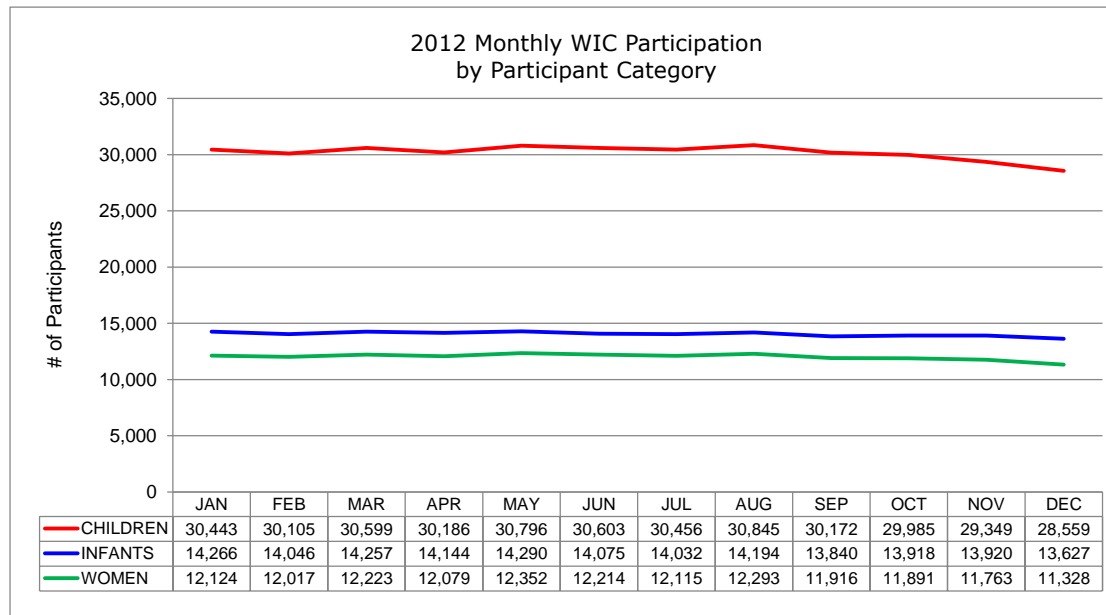
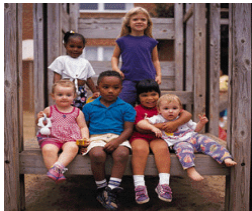


CONNECTICUT DEPARTMENT OF PUBLIC HEALTH
STATE WIC PROGRAM

2012 Monthly WIC Participation
by Participant Category ^{a, b}



STATEWIDE TOTALS	QUARTER 1			QUARTER 2			QUARTER 3			QUARTER 4			MONTHLY AVERAGE	%
	JAN	FEB	MAR	APR	MAY	JUN	JUL	AUG	SEP	OCT	NOV	DEC		
WOMEN	12,124	12,017	12,223	12,079	12,352	12,214	12,115	12,293	11,916	11,891	11,763	11,328	12,026	21.4%
- Pregnant	6,165	6,163	6,353	6,311	6,523	6,439	6,435	6,520	6,136	6,100	5,888	5,602	6,220	51.7%
- Breastfeeding:	2,703	2,670	2,720	2,687	2,754	2,731	2,640	2,695	2,680	2,701	2,726	2,682	2,699	22.4%
- Fully breastfeeding	1,036	1,035	1,042	1,026	1,048	1,028	996	1,063	1,085	1,067	1,090	1,062	1,048	38.8%
- Partially breastfeeding	1,667	1,635	1,678	1,661	1,706	1,703	1,644	1,632	1,595	1,634	1,636	1,620	1,651	61.2%
- Postpartum	3,256	3,184	3,150	3,081	3,075	3,044	3,040	3,078	3,100	3,090	3,149	3,044	3,108	25.8%
INFANTS	14,266	14,046	14,257	14,144	14,290	14,075	14,032	14,194	13,840	13,918	13,920	13,627	14,051	25.0%
- Breastfed:	3,977	3,981	3,999	3,948	4,010	3,965	3,901	4,036	3,906	3,985	3,988	3,900	3,966	28.2%
- Fully breastfed	944	967	954	922	927	937	922	985	973	960	1,011	964	956	24.1%
- Partially breastfed	3,033	3,014	3,045	3,026	3,083	3,028	2,979	3,051	2,933	3,025	2,977	2,936	3,011	75.9%
- Formula Fed	10,289	10,065	10,258	10,196	10,280	10,110	10,131	10,158	9,934	9,933	9,932	9,727	10,084	71.8%
CHILDREN	30,443	30,105	30,599	30,186	30,796	30,603	30,456	30,845	30,172	29,985	29,349	28,559	30,175	53.6%
GRAND TOTALS	56,833	56,168	57,079	56,409	57,438	56,892	56,603	57,332	55,928	55,794	55,032	53,514	56,252	100.0%



^a Data source: Statewide WIC Information System (SWIS), Participation Report - WICP3001 / 301T, excluding Unknowns.