

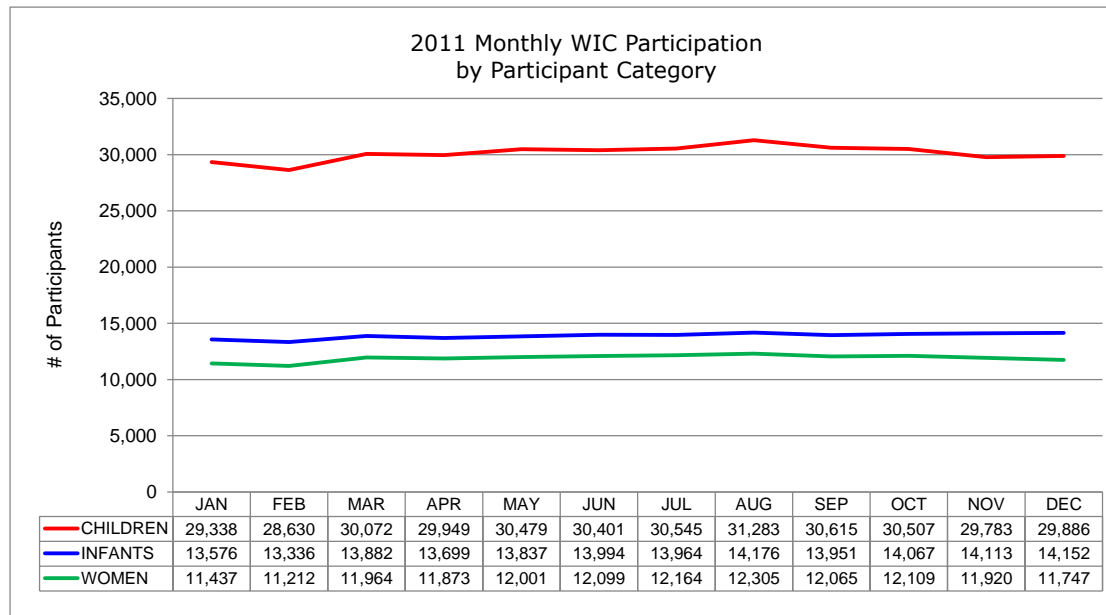
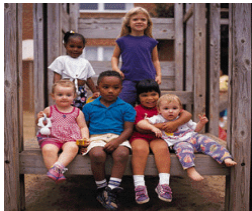


CONNECTICUT DEPARTMENT OF PUBLIC HEALTH
STATE WIC PROGRAM

2011 Monthly WIC Participation
by Participant Category ^a



STATEWIDE TOTALS	QUARTER 1			QUARTER 2			QUARTER 3			QUARTER 4			MONTHLY AVERAGE	%
	JAN	FEB	MAR	APR	MAY	JUN	JUL	AUG	SEP	OCT	NOV	DEC		
WOMEN	11,437	11,212	11,964	11,873	12,001	12,099	12,164	12,305	12,065	12,109	11,920	11,747	11,908	21.3%
- Pregnant	5,965	5,912	6,354	6,283	6,383	6,473	6,558	6,540	6,353	6,254	6,047	5,961	6,257	52.5%
- Breastfeeding:	2,516	2,455	2,583	2,581	2,620	2,652	2,693	2,729	2,683	2,711	2,649	2,628	2,625	22.0%
- Fully breastfeeding	993	960	1,045	1,058	1,071	1,069	1,094	1,079	1,063	1,047	1,031	1,043	1,046	39.9%
- Partially breastfeeding	1,523	1,495	1,538	1,523	1,549	1,583	1,599	1,650	1,620	1,664	1,618	1,585	1,579	60.1%
- Postpartum	2,956	2,845	3,027	3,009	2,998	2,974	2,913	3,036	3,029	3,144	3,224	3,158	3,026	25.4%
INFANTS	13,576	13,336	13,882	13,699	13,837	13,994	13,964	14,176	13,951	14,067	14,113	14,152	13,896	24.8%
- Breastfed:	3,397	3,357	3,574	3,535	3,647	3,689	3,706	3,803	3,770	3,878	3,934	3,937	3,686	26.5%
- Fully breastfed	882	873	954	957	989	998	998	997	977	941	962	932	955	25.9%
- Partially breastfed	2,515	2,484	2,620	2,578	2,658	2,691	2,708	2,806	2,793	2,937	2,972	3,005	2,731	74.1%
- Formula Fed	10,179	9,979	10,308	10,164	10,190	10,305	10,258	10,373	10,181	10,189	10,179	10,215	10,210	73.5%
CHILDREN	29,338	28,630	30,072	29,949	30,479	30,401	30,545	31,283	30,615	30,507	29,783	29,886	30,124	53.9%
GRAND TOTALS	54,351	53,178	55,918	55,521	56,317	56,494	56,673	57,764	56,631	56,683	55,816	55,785	55,928	100.0%



^a Data source: Statewide WIC Information System (SWIS), Participation Report - WICP3001 / 301T, excluding Unknowns.