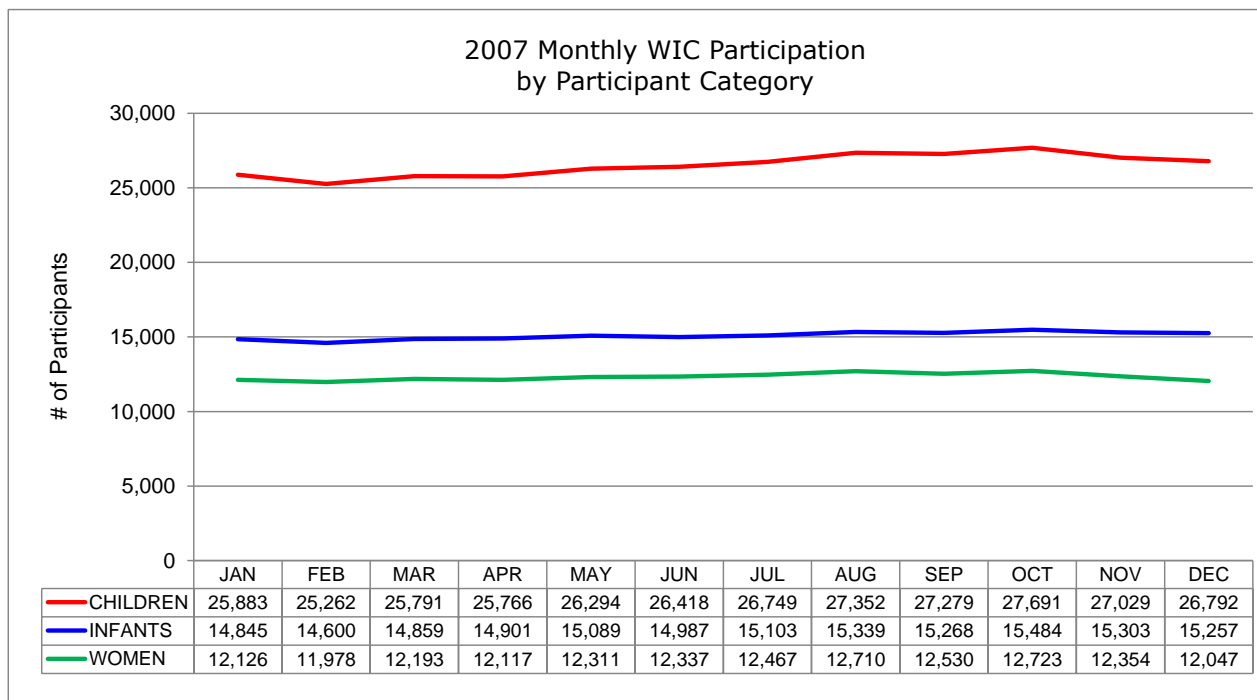
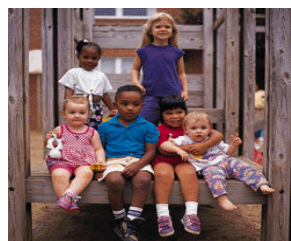


2007 Monthly WIC Participation
by Participant Category ^a

STATEWIDE TOTALS	QUARTER 1			QUARTER 2			QUARTER 3			QUARTER 4			MONTHLY AVERAGE	%
	JAN	FEB	MAR	APR	MAY	JUN	JUL	AUG	SEP	OCT	NOV	DEC		
WOMEN	12,126	11,978	12,193	12,117	12,311	12,337	12,467	12,710	12,530	12,723	12,354	12,047	12,324	22.9%
- Pregnant	6,289	6,206	6,357	6,345	6,495	6,547	6,650	6,751	6,624	6,660	6,321	6,058	6,442	52.3%
- Breastfeeding	2,627	2,615	2,655	2,662	2,669	2,635	2,647	2,775	2,745	2,813	2,820	2,818	2,707	22.0%
- Postpartum	3,210	3,157	3,181	3,110	3,147	3,155	3,170	3,184	3,161	3,250	3,213	3,171	3,176	25.8%
INFANTS	14,845	14,600	14,859	14,901	15,089	14,987	15,103	15,339	15,268	15,484	15,303	15,257	15,086	28.0%
CHILDREN	25,883	25,262	25,791	25,766	26,294	26,418	26,749	27,352	27,279	27,691	27,029	26,792	26,526	49.2%
GRAND TOTALS	52,854	51,840	52,843	52,784	53,694	53,742	54,319	55,401	55,077	55,898	54,686	54,096	53,936	100.0%



^a Data source: Statewide WIC Information System (SWIS),
Participation Report - WICP3001 / 301T.