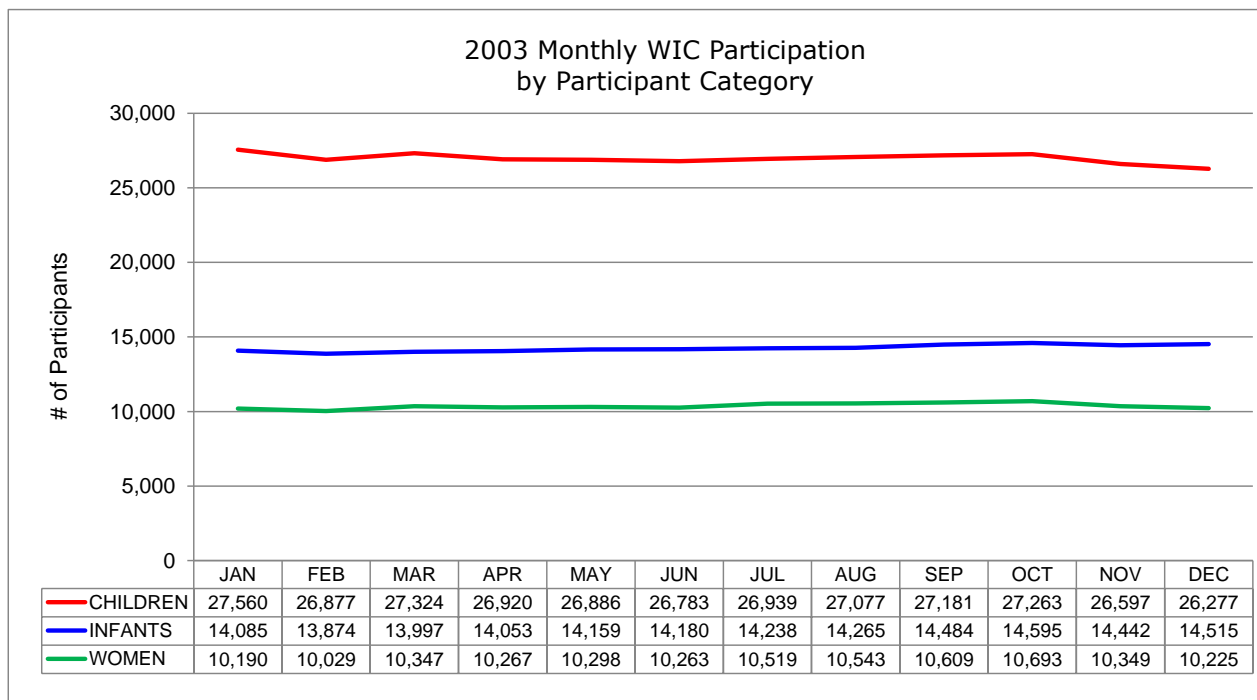
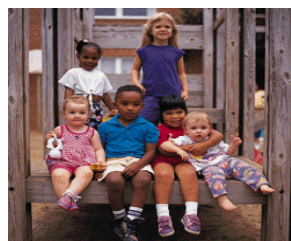


2003 Monthly WIC Participation  
by Participant Category <sup>a</sup>

| STATEWIDE TOTALS    | QUARTER 1 |        |        | QUARTER 2 |        |        | QUARTER 3 |        |        | QUARTER 4 |        |        | MONTHLY AVERAGE | %      |
|---------------------|-----------|--------|--------|-----------|--------|--------|-----------|--------|--------|-----------|--------|--------|-----------------|--------|
|                     | JAN       | FEB    | MAR    | APR       | MAY    | JUN    | JUL       | AUG    | SEP    | OCT       | NOV    | DEC    |                 |        |
| <b>WOMEN</b>        | 10,190    | 10,029 | 10,347 | 10,267    | 10,298 | 10,263 | 10,519    | 10,543 | 10,609 | 10,693    | 10,349 | 10,225 | 10,361          | 20.1%  |
| - Pregnant          | 5,319     | 5,304  | 5,568  | 5,568     | 5,558  | 5,537  | 5,720     | 5,708  | 5,687  | 5,699     | 5,444  | 5,326  | 5,537           | 53.4%  |
| - Breastfeeding     | 2,002     | 1,964  | 2,024  | 1,995     | 2,014  | 1,995  | 2,007     | 1,995  | 2,001  | 2,017     | 1,985  | 2,000  | 2,000           | 19.3%  |
| - Postpartum        | 2,869     | 2,761  | 2,755  | 2,704     | 2,726  | 2,731  | 2,792     | 2,840  | 2,921  | 2,977     | 2,920  | 2,899  | 2,825           | 27.3%  |
| <b>INFANTS</b>      | 14,085    | 13,874 | 13,997 | 14,053    | 14,159 | 14,180 | 14,238    | 14,265 | 14,484 | 14,595    | 14,442 | 14,515 | 14,241          | 27.6%  |
| <b>CHILDREN</b>     | 27,560    | 26,877 | 27,324 | 26,920    | 26,886 | 26,783 | 26,939    | 27,077 | 27,181 | 27,263    | 26,597 | 26,277 | 26,974          | 52.3%  |
| <b>GRAND TOTALS</b> | 51,835    | 50,780 | 51,668 | 51,240    | 51,343 | 51,226 | 51,696    | 51,885 | 52,274 | 52,551    | 51,388 | 51,017 | 51,575          | 100.0% |



<sup>a</sup> Data source: Statewide WIC Information System (SWIS),  
Participation Report - WICP3001 / 301T.