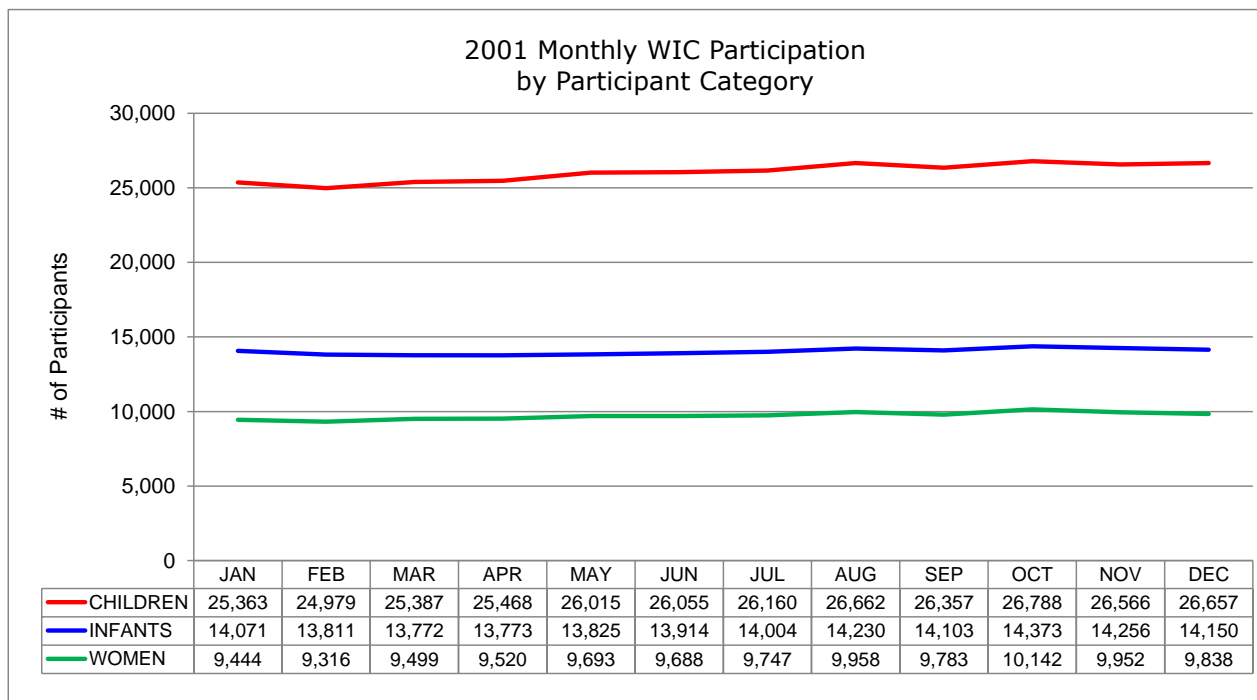
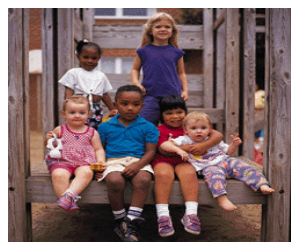


2001 Monthly WIC Participation  
by Participant Category <sup>a</sup>

STATEWIDE TOTALS	QUARTER 1			QUARTER 2			QUARTER 3			QUARTER 4			MONTHLY AVERAGE	%
	JAN	FEB	MAR	APR	MAY	JUN	JUL	AUG	SEP	OCT	NOV	DEC		
<b>WOMEN</b>	9,444	9,316	9,499	9,520	9,693	9,688	9,747	9,958	9,783	10,142	9,952	9,838	9,715	19.5%
- Pregnant	5,054	5,003	5,145	5,225	5,437	5,445	5,490	5,599	5,394	5,526	5,261	5,083	5,305	54.6%
- Breastfeeding	1,609	1,625	1,666	1,638	1,657	1,635	1,665	1,736	1,774	1,867	1,910	1,905	1,724	17.7%
- Postpartum	2,781	2,688	2,688	2,657	2,599	2,608	2,592	2,623	2,615	2,749	2,781	2,850	2,686	27.6%
<b>INFANTS</b>	14,071	13,811	13,772	13,773	13,825	13,914	14,004	14,230	14,103	14,373	14,256	14,150	14,024	28.2%
<b>CHILDREN</b>	25,363	24,979	25,387	25,468	26,015	26,055	26,160	26,662	26,357	26,788	26,566	26,657	26,038	52.3%
<b>GRAND TOTALS</b>	48,878	48,106	48,658	48,761	49,533	49,657	49,911	50,850	50,243	51,303	50,774	50,645	49,777	100.0%



<sup>a</sup> Data source: Statewide WIC Information System (SWIS),  
Participation Report - WICP3001 / 301T.