


Vaccine Equity Partnership Funding (VEPF) Program

Info Session for Local Health

1

1




Agenda

- Vaccine Equity Partnership Funding (VEPF) Application Components
- Collaborating with state-contracted campaign & outreach services
- VEPF program timeline, submission, and awards
- Performance measurement and reporting requirements
- Live Q&A


2

2




Vaccine Equity Partnerships

- A community-driven effort to ensure COVID vaccines reach communities of color and vulnerable populations
- Local Health Departments/Districts (LHDs) orchestrate Equity Partnership activities, to be rolled out immediately upon receipt of funding, with at least 1 provider and 1 community group equity partner




3

3



State support for Equity Partnerships

- Funding**
Rapid grant funding for Local Health Departments and community organizations
Details follow
- Campaign & outreach support**
Canvassing, calling and mobile vaccine clinics
- Help & support**
Support for local execution, data and analytics support, peer-to-peer learning, and expert advice



4

4



VEPF Applications: Required components of qualifying LHD equity partnership applications



Funding will be made available to all Local Health Departments who submit a qualifying application



5

1 VEPF Narrative Responses

- ✓ Describe targeted communities
- ✓ Describe circumstances / barriers facing those communities
- ✓ List chosen equity provider and community group partners
- ✓ Justify partner choices (e.g., expertise, past performance)
- ✓ Name the Equity Partnership Coordinator

Full questions in the Application Guidance packet



6

2 Workplan with activities and outputs

Workplan requirements:

- Lay out the planned activities over a maximum 4-month timeframe (May-August)
- Indicate which partners will complete different activities, and how the activities will be coordinated
- Report on a small, targeted number of outputs
- See Appendix 1 for examples and activity categories



7

3 Equity partner letters

Equity partners:

- At least 1 provider and at least 1 community group
- Can be any organization that is a registered business (including for- and non-profit entities) in the state of CT
- The partners must provide a letter in support of the application



8

4 Detailed Budget with Justifications

Budget Excel template:

- The Budget Excel template provided to you has 6 budget categories
 - Salary and wages, fringe benefits, supplies, contractual, equipment, and other
- Must include breakdown of contractual funding to equity partners
- Template contains built-in formulas to automatically calculate your budget for user ease

Template example: budget components sum automatically to give a Total Grant Request

	5/01/2021-8/31/2021	
Salary and wages		\$0
Fringe		\$0
Total Salary		\$0
Supplies		\$0
Contractuals		\$0
Equipment		\$0
Other		\$0
Total Direct		\$0
Total Indirect		\$0
Total Grant Request		\$0



9

DPH Agenda

Vaccine Equity Partnership Funding (VEPF) Application Components

Collaborating with state-contracted campaign & outreach services

VEPF program timeline, submission, and awards

Performance measurement and reporting requirements

Live Q&A

10

Grossman Solutions and Griffin Health



11

DPH Agenda

Vaccine Equity Partnership Funding (VEPF) Application Components

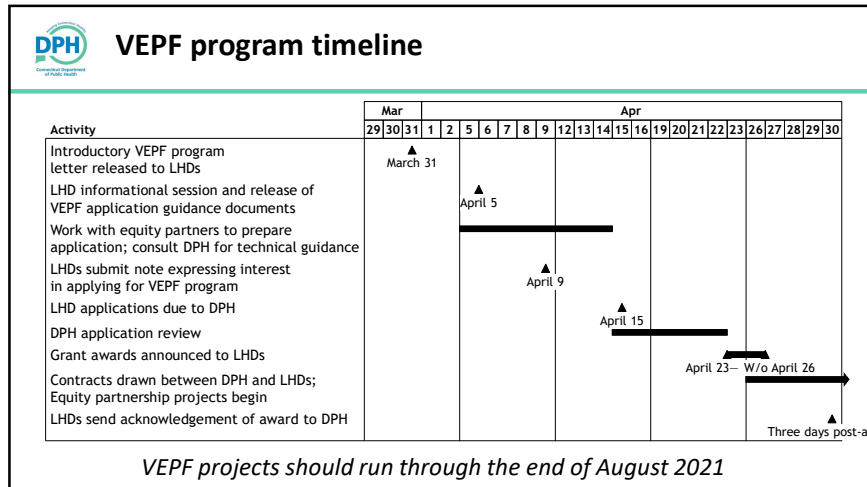
Collaborating with state-contracted campaign & outreach services

VEPF program timeline, submission, and awards

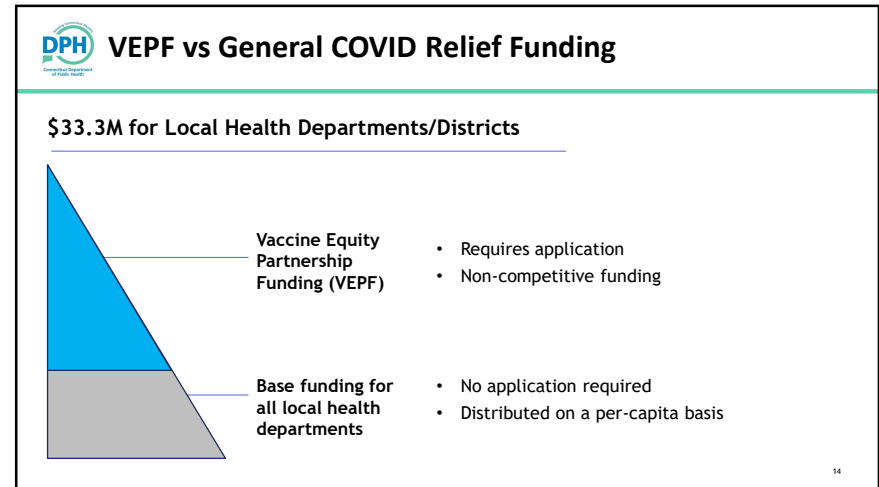
Performance measurement and reporting requirements

Live Q&A

12



13



14

DPH **Submission, review, and awarding process**

Submission

- LHDs intending to apply should notify DPH.VEPFInbox@ct.gov by this Friday, April 9th
- Technical Assistance for completing applications will be available from DPH
- Final submission should be submitted by Thursday, April 15th to DPH.VEPFInbox@ct.gov

Review and awarding

- Applications will be reviewed by a multi-disciplinary DPH committee
- Eligible recipient may be contacted post review with changes/recommendations on workplan
- Notice of Awards will be announced starting April 23, 2021 and through the end of April via DPH.VEPFInbox@ct.gov

15

15

DPH **Agenda**

- Vaccine Equity Partnership Funding (VEPF) Application Components
- Collaborating with state-contracted campaign & outreach services
- VEPF program timeline, submission, and awards
- Performance measurement and reporting requirements
- Live Q&A

16

16



Performance measurement and reporting

- Monthly fiscal reports and progress reports timeline

Monthly Report Period Schedule	Date of Report Submission
May 1-31 st 2021	June 30 th , 2021
June 1-30 th 2021	July 31 st , 2021
July 1-31 st 2021	August 31 st , 2021
August 1-31 st 2021	September 30 th , 2021

- Monthly peer-to-peer learning meetings facilitated by DPH, sharing milestones and learnings

17

17



Agenda

Vaccine Equity Partnership Funding (VEPF) Application Components

Collaborating with state-contracted campaign & outreach services

VEPF program timeline, submission, and awards

Performance measurement and reporting requirements

Live Q&A

18