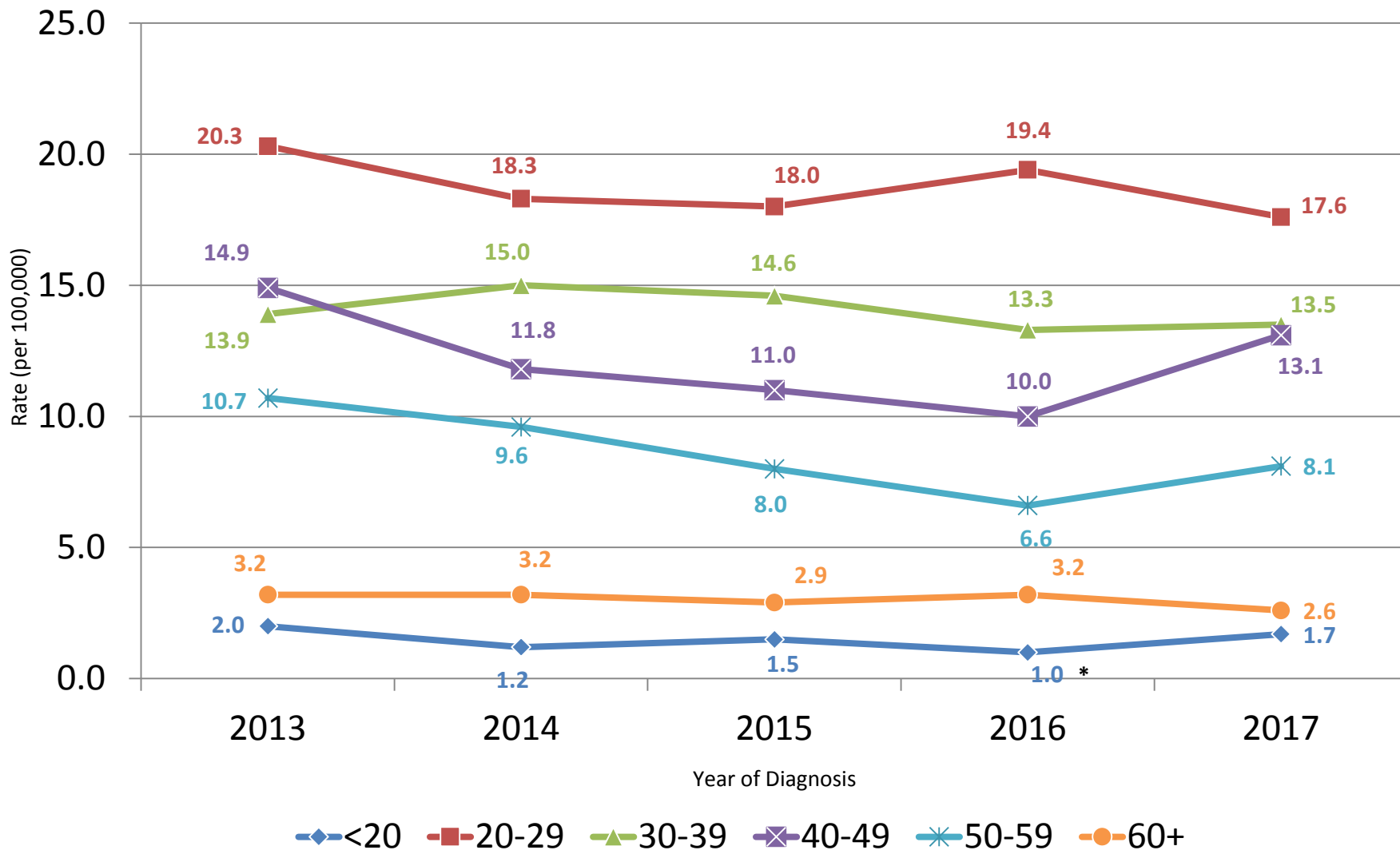


Rate of Newly Diagnosed HIV infection, by Year of Diagnosis and Age Group, Connecticut, 2013-2017



*Rates based on reported numbers less than 12 should be interpreted with caution because the numbers have underlying relative standard errors greater than 30% and are considered unreliable.
 Rate per 100,000 population based on corresponding year's census estimates.
 Data supplied from HIV Surveillance for cases reported through 2018.

