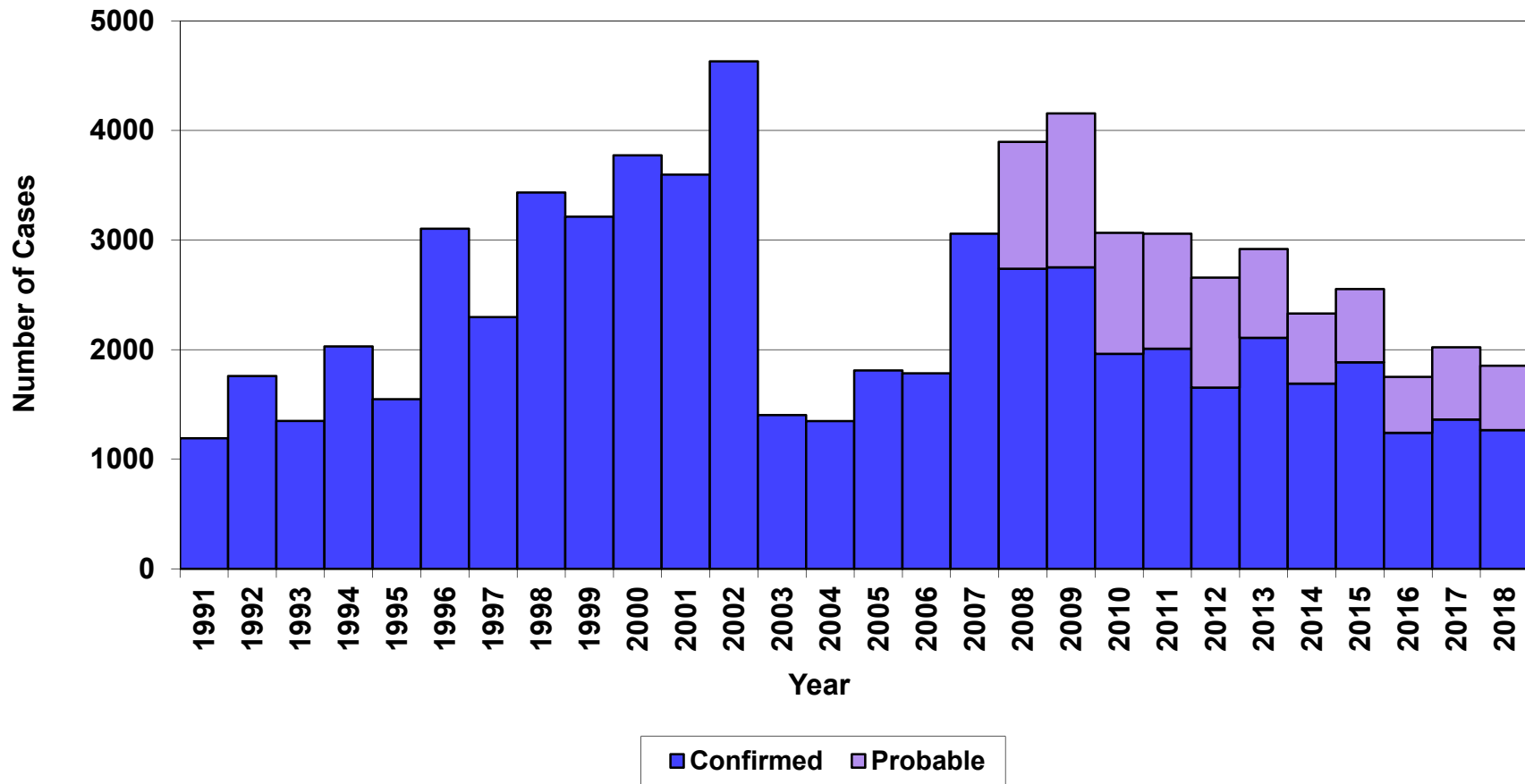


Lyme Disease Cases Statewide by Case Status, Connecticut, 1991 – 2018*



* Numbers and rates reflect changes in the reporting system and the national surveillance case definition (http://www.cdc.gov/osels/ph_surveillance/nndss/casedef/lyme_disease_current.htm). Surveillance has included physician-reporting (1987-present) and laboratory-reporting (1998-2002, 2006-present) components. The 2008-current data, contains both confirmed and probable cases as defined by the national surveillance case definition.