

# Connecticut Department of Public Health

## Weekly Influenza Update



### 2020-2021 Quick Notes for Week 51 (December 13-19, 2020)

Influenza Geographic Activity = SPORADIC		
Influenza-associated Hospitalizations:	Reported This Week: 2	Season To date: 9
Influenza-associated Deaths:	Reported This Week: 0	Season To date: 1
	Pediatric New This Week: 0	Pediatric Season Total: 0
Outpatient Influenza-like Illness (ILINet) was 1.2%, lower than the 1.48% observed last week.		

### 2020-2021 Overview for Week 51 (December 13-19, 2020)

Outpatient Influenza-like illness (ILI) activity was similar to the previous week. Influenza geographic activity is <b>SPORADIC</b> .	A total of 9 influenza related hospitalizations have been reported since the beginning of the 2020-2021 season.
Hospital Emergency Department Syndromic Surveillance data are currently not available.	No new influenza associated deaths were reported in week 51. A total of 1 death has been reported since the beginning of the 2020-2021 season.
Of the 22 positive influenza tests reported to DPH this season, 0 (0 %) were Influenza A 2009 (H1N1), 0 (0 %) was Influenza A (H3N2), 5 (23 %) Influenza Type B, and 17 (77 %) were Influenza A (type unspecified).	No new influenza-associated pediatric deaths were reported in week 51. No influenza-associated pediatric deaths have been reported since the beginning of the 2020-2021 season. Annual vaccination is the best way to protect children from influenza.
<a href="#">Connecticut COVID data</a>	<a href="#">CDC Flu View</a>
ALL DATA ARE PRELIMINARY AND SUBJECT TO CHANGE.	

**Annual vaccination is the best way to protect against severe illness due to influenza.**

# Connecticut Department of Public Health

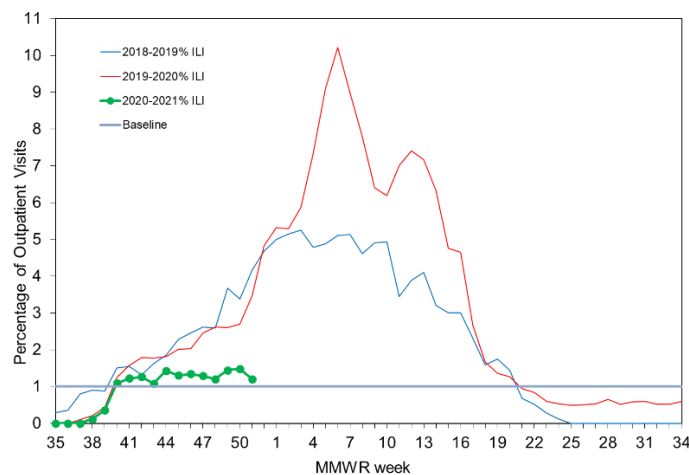
## Weekly Influenza Update



### ILINet Surveillance

Each week a network of volunteer outpatient providers, including clinics, health centers, urgent care centers, and emergency departments, known as ILINet, report the percentage of patient visits with influenza-like illness (ILI), which consists of cough and/or sore throat and a fever  $>100^{\circ}\text{F}$  in the absence of a known cause. Because of expansion of ILINet to additional providers and the effect of COVID-19, the current year cannot be compared to previous years. As of December 19, 2020, outpatient ILI is at **1.2%**.

**Percentage of outpatient patient visits associated with ILI per MMWR week.**



### Hospital Syndromic Surveillance

Hospital Emergency Department Syndromic Surveillance data are currently not available.

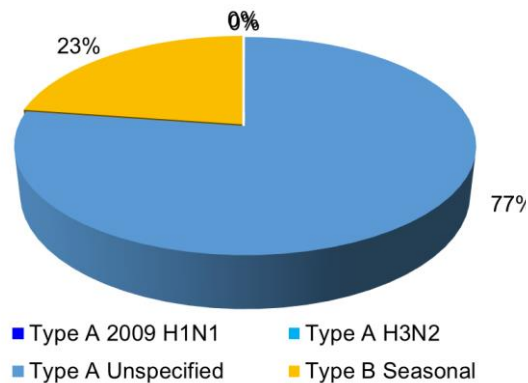
# Connecticut Department of Public Health

## Weekly Influenza Update



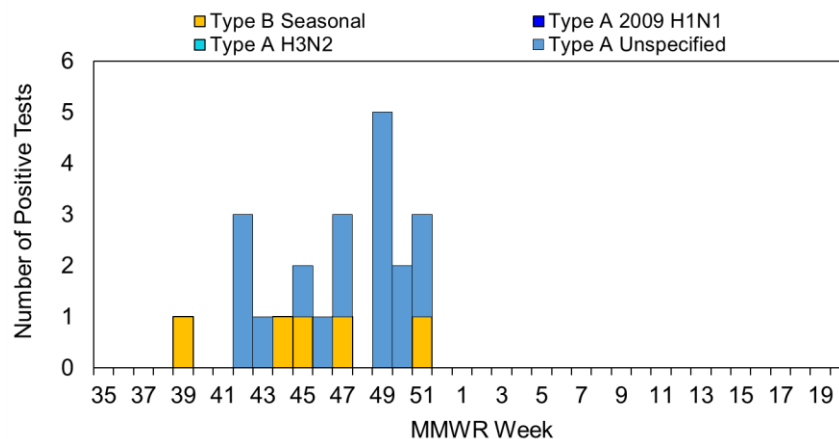
### Laboratory Surveillance

Laboratories report positive influenza tests to DPH. Test results may include the virus subtype (as H3N2), which helps determine the specific virus strains circulating in CT. Other results only provide a general type (Type A Unspecified, Type B). As of December 19, 2020, **22** positive influenza tests have been reported.

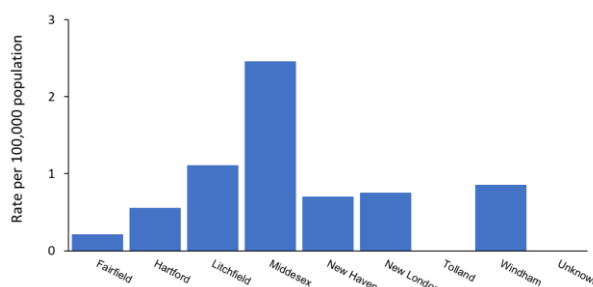


Percent of each influenza virus type reported to DPH during the current season.

Total number of positive influenza tests and the number of each influenza virus type reported to DPH per MMWR week during the current season.



Rate of positive influenza tests per 100,000 persons reported from each county in Connecticut during the current season.



# Connecticut Department of Public Health

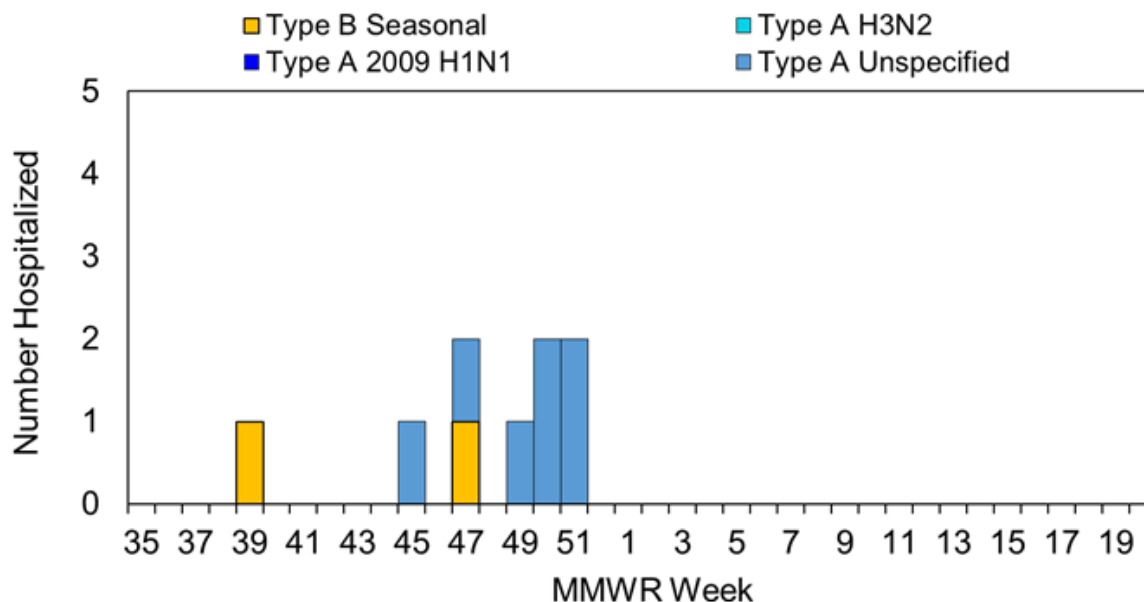
## Weekly Influenza Update



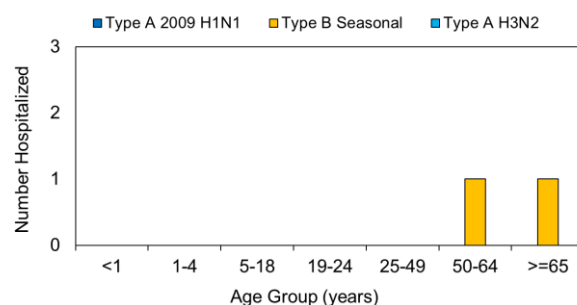
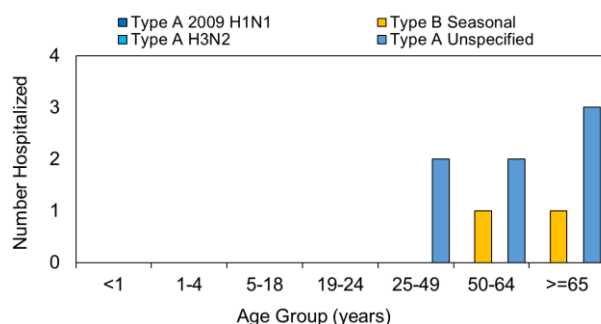
### Hospital Surveillance

Hospitals report patients hospitalized with influenza to DPH. The Connecticut Hospital Association (CHA) also tracks basic hospitalization data. As of December 19, 2020, **9** patients have been hospitalized with influenza during the current season. Two hospitalized influenza patients were also infected with COVID-19.

**Total number of patients hospitalized with laboratory-confirmed influenza by virus type per MMWR week.**

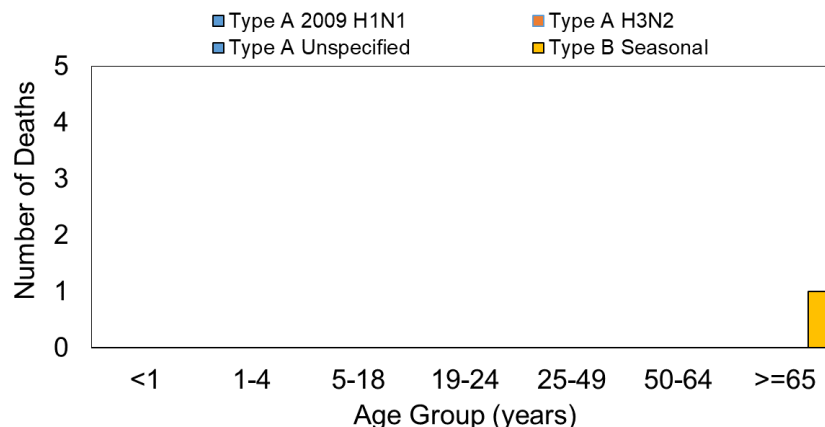


**Total number of reported patients hospitalized with influenza by age and influenza virus type during the current season.** NOTE: Type A Unspecified test results are not displayed in the second figure below so other results may be clearly seen.



### Influenza-associated Deaths

Influenza-associated deaths are reported to DPH. The graph shows the number of deaths associated with influenza by age group. Comparisons to previous years are provided when new data are available. **Due to the need to confirm reports and reporting delays, consider the current week data preliminary. As of December 19, 2020, 1 influenza-associated death has been reported to DPH.**



**Total number of influenza-associated deaths per month for the 2016-2017, 2017-2018, 2018-2019, 2019-2020, and current influenza seasons.**

