

Connecticut Department of Public Health

Weekly Influenza Update



2020-2021 Quick Notes for Week 02 (January 10 - 16, 2021)

Influenza Geographic Activity = SPORADIC		
Influenza-associated Hospitalizations:	Reported This Week: 1	Season To date: 12
Influenza-associated Deaths:	Reported This Week: 0	Season To date: 1
	Pediatric New This Week: 0	Pediatric Season Total: 0
Outpatient Influenza-like Illness (ILINet) was 1.02%, similar to the 1.05% observed last week.		

2020-2021 Overview for Week 02 (January 10 - 16, 2021)

Outpatient Influenza-like illness (ILI) activity was similar to the previous week. Influenza geographic activity is SPORADIC .	A total of 12 influenza-associated hospitalizations have been reported since the beginning of the 2020-2021 season.
Hospital Emergency Department (ED) Syndromic Surveillance data reveal a similar percentage of total ED visits for ILI as the percentage observed in the previous week but a much lower percentage of total ED visits for ILI than observed in previous influenza seasons.	No new influenza associated deaths were reported in week 1. A total of 1 death has been reported since the beginning of the 2020-2021 season.
Of the 36 positive influenza tests reported to DPH this season, 0 (0 %) were Influenza A 2009 (H1N1), 0 (0 %) were Influenza A (H3N2), 10 (28 %) Influenza Type B, and 26 (72 %) were Influenza A (type unspecified).	No new influenza-associated pediatric deaths were reported in week 1. No influenza-associated pediatric deaths have been reported since the beginning of the 2020-2021 season. Annual vaccination is the best way to protect children from influenza.
Connecticut COVID data	CDC Flu View
ALL DATA ARE PRELIMINARY AND SUBJECT TO CHANGE.	

Annual vaccination is the best way to protect against severe illness due to influenza.

Connecticut Department of Public Health

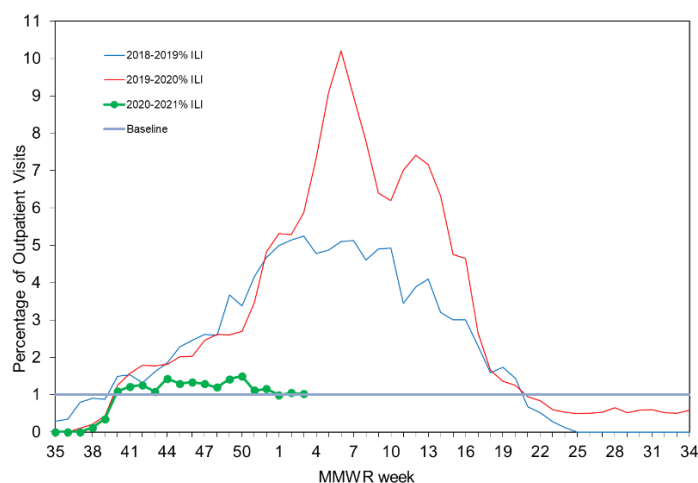
Weekly Influenza Update



ILINet Surveillance

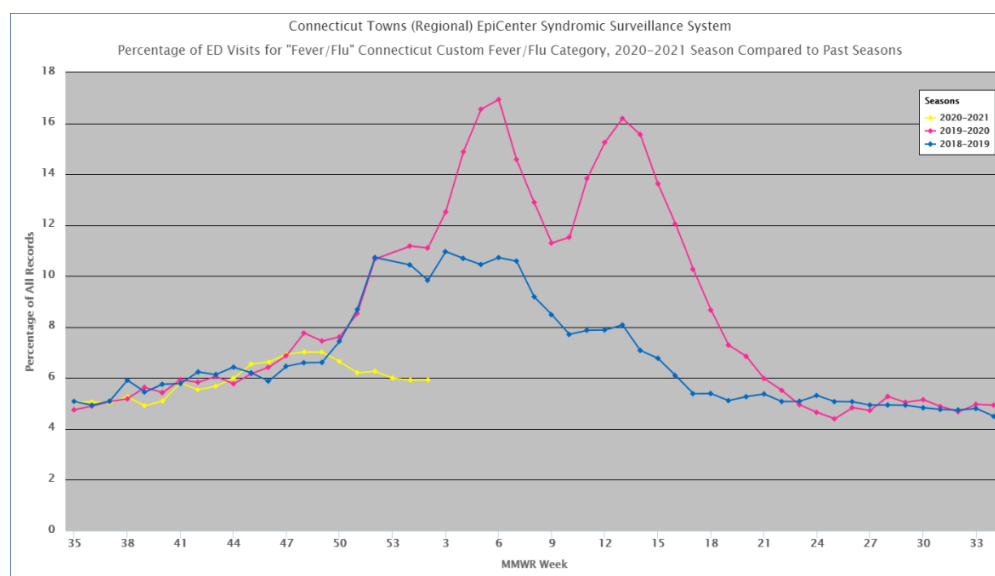
Each week a network of volunteer outpatient providers, including clinics, health centers, urgent care centers, and emergency departments, known as ILINet, report the percentage of patient visits with influenza-like illness (ILI), which consists of cough and/or sore throat and a fever $>100^{\circ}\text{F}$ in the absence of a known cause. Because of expansion of ILINet to additional providers and the effect of COVID-19, the current year should not be compared to previous years. As of January 16, 2021, outpatient ILI is at **1.02%**.

Percentage of outpatient patient visits associated with ILI per MMWR week.



Hospital Syndromic Surveillance

DPH EpiCenter receives near real-time information about emergency department (ED) visits from hospital EDs and hospital-affiliated urgent care centers throughout Connecticut. Data from 2019-2020 flu season were influenced by the onset of COVID-19 Pandemic. As of January 16, 2021, **5.93%** of 2020-2021 season ED patients had ILI, which is similar to the previous week but much lower than the % of ED patients with ILI than observed during previous influenza seasons.



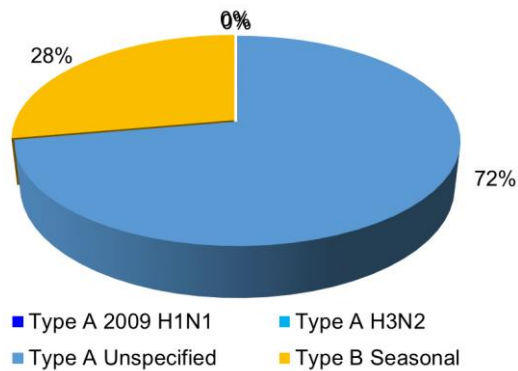
Connecticut Department of Public Health

Weekly Influenza Update



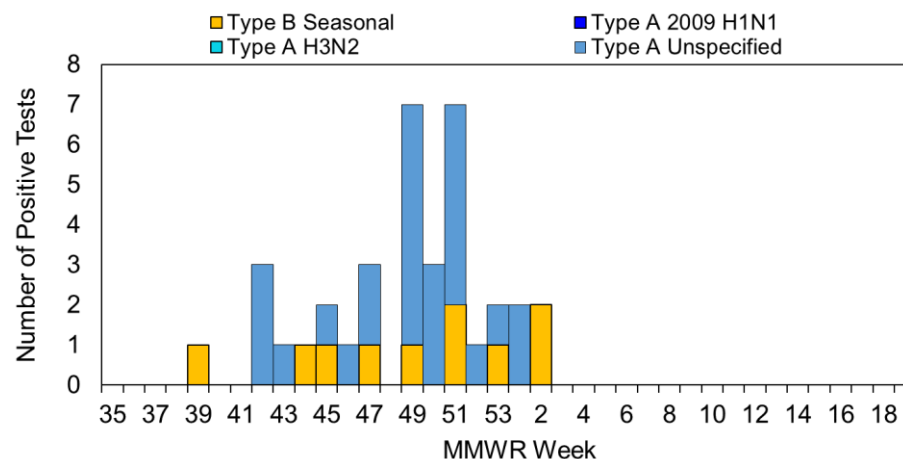
Laboratory Surveillance

Laboratories report positive influenza tests to DPH. Test results may include the virus subtype (as H3N2), which helps determine the specific virus strains circulating in CT. Other results only provide a general type (Type A Unspecified, Type B). As of January 16, 2021, **36** positive influenza tests have been reported.

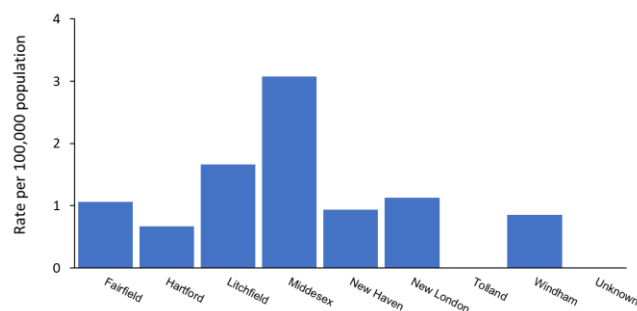


Percent of each influenza virus type reported to DPH during the current season.

Total number of positive influenza tests and the number of each influenza virus type reported to DPH per MMWR week during the current season.



Rate of positive influenza tests per 100,000 persons reported from each county in Connecticut during the current season.



Connecticut Department of Public Health

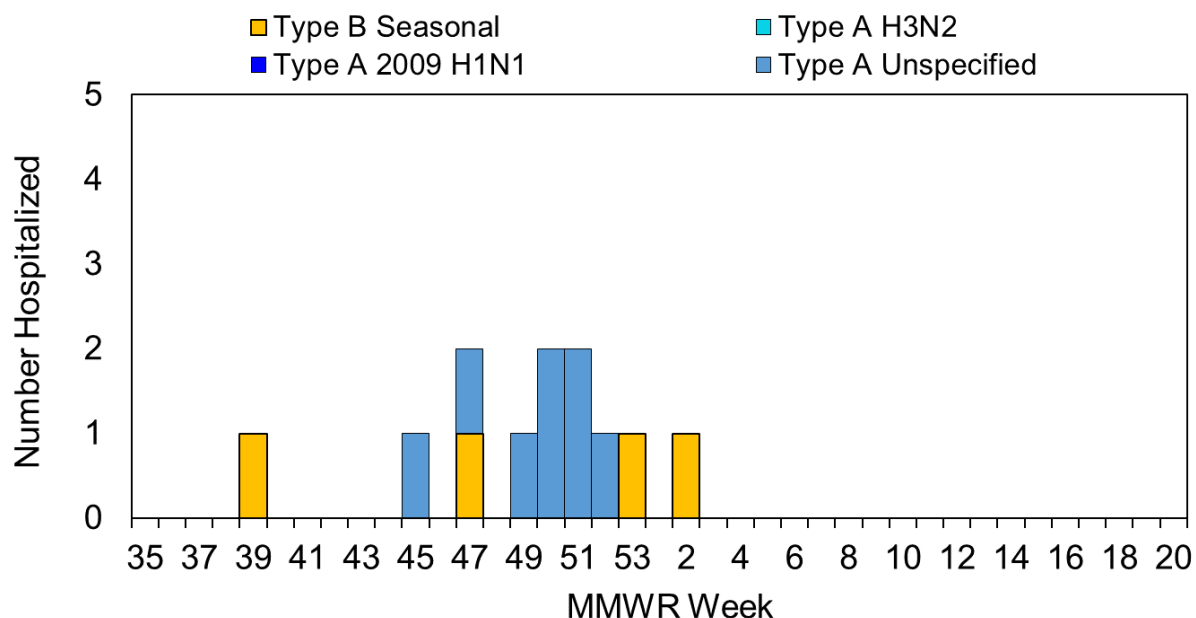
Weekly Influenza Update



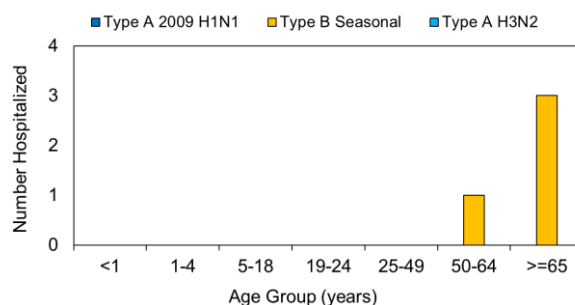
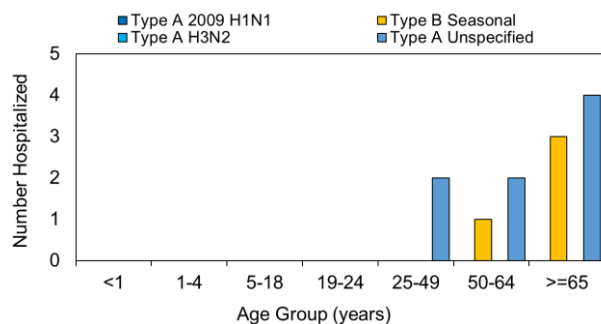
Hospital Surveillance

Hospitals report patients hospitalized with influenza to DPH. The Connecticut Hospital Association (CHA) also tracks basic hospitalization data. As of January 16, 2021, **12** patients have been hospitalized with influenza during the current season. Two hospitalized influenza patients were also infected with COVID-19.

Total number of patients hospitalized with laboratory-confirmed influenza by virus type per MMWR week.



Total number of reported patients hospitalized with influenza by age and influenza virus type during the current season. NOTE: Type A Unspecified test results are not displayed in the second figure below so other results may be clearly seen.



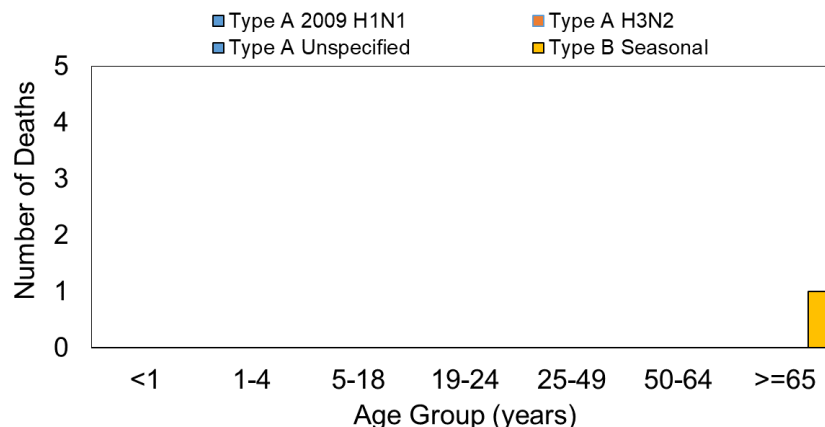
Connecticut Department of Public Health

Weekly Influenza Update



Influenza-associated Deaths

Influenza-associated deaths are reported to DPH. The graph shows the number of deaths associated with influenza by age group. Comparisons to previous years are provided when new data are available. **Due to the need to confirm reports and reporting delays, consider the current week data preliminary. As of January 16, 2021, 1 influenza-associated death has been reported to DPH.**



Total number of influenza-associated deaths per month for the 2016-2017, 2017-2018, 2018-2019, 2019-2020, and current influenza seasons.

