

ODU EDUCATION & PREVENTION: REGIONAL BEHAVIORAL HEALTH ACTION ORGANIZATIONS (RBHAO)

The Hub: Behavioral Health Action Organization for Southwestern CT (a program of RYASAP)

Ph. (475) 282-3521

Email info@thehubct.org

Website www.thehubct.org

Alliance for Prevention & Wellness (APW)/a program of BH Care

Ph. (203) 736-8566

Email pmautte@bhcare.org

Website www.apw-ct.org

SERAC: Supporting & Engaging Resources for Action & Change

Ph. (860) 848-2800

Email office@seracct.org

Website www.secracct.org

Amplify, Inc.

Ph. (860) 667-6388

Email mdufore@Amplifyct.org

Website www.Amplifyct.org

Western CT Coalition

Ph.(203) 743-7741

Email afulton@WCTCoalition.org

Website www.WCTCoalition.org

COURT-BASED SERVICES: ODU SCREENING, REFERRAL & COACHING

In collaboration with the CT Judicial Branch, “Treatment Program Pathway” (TPP) is available in the following courts:

- Bridgeport
- Manchester
- New London
- Torrington
- Waterbury

In collaboration with the CT Criminal Justice Division, “Early Screening and Intervention” (ESI) is available in the following courts:

- Bridgeport
- Hartford
- New Haven
- New London
- Norwich
- Waterbury

Additional CT Resources for OUD

24/7 Access Line: 800-563-4086

www.liveloud.org

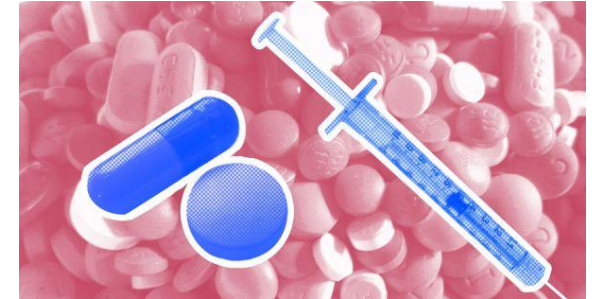
www.drugfreect.org

CT MAT Resources Locator Map:

www.ctbhp.org

For Narcan, call your closest RBHAO or call DMHAS at 860-418-6828.

CT State Opioid Response (SOR) Grant



CT Department of Mental Health and Addiction Services (DMHAS)

With funding received from the Substance Abuse and Mental Health Services Administration (SAMHSA) and in partnership with:

CT Department of Children and Families

CT Department of Correction

CT Department of Criminal Justice

CT Department of Consumer Protection

CT Judicial Branch

CT Department of Public Health

UCONN Health Center, School of Pharmacy &

School of Social Work

OPIOID USE DISORDER (OUD) TREATMENT

SPECIALIZED OUD CLINICS

- **APT Foundation**, Long Wharf, New Haven (203) 781-4600
- **BH Care**, Branford (203) 800-7177
- **Bridges**, Milford (203) 878-6365
- **CASA**, Bridgeport (203) 331-4728
- **CHR**, Willimantic, Manchester, Enfield (877) 884-3571
- **CMHA**, New Britain, (860) 223-2778
- **CNV Help**, Waterbury (203) 754-0322
- **CT Counseling Centers**, Meriden (203) 317-2500, Stamford (203) 653-3038
- **Cornell –Scott**, Ansonia (203) 503-3570
- **McCall**, Torrington (860) 496-2100
- **RNP**, Stratford (203) 386-8802
- **SCADD**, Norwich (860) 889-3178
- **The Village**, Hartford (860) 236-4511
- **UCFS**, Norwich (860) 822-4292
- **United Svcs**, Dayville (860) 774-2020
- **Wellmore**, Waterbury (203) 755-1143
- **Wheeler Clinic**, Bristol (860) 793-3588

MOBILE MEDICATION ASSISTED

TREATMENT: Bridgeport/Stamford;
Hartford, Milford/West Haven; Torrington

MEDICATION ASSISTED TREATMENT IN DOC

RESIDENTIAL TREATMENT

VOUCHERS FOR OUD, ABH (860) 638-5309

RECOVERY SUPPORT

“HOW CAN WE HELP?” (OUD outreach, overdose follow-up & family support)

- Bristol (860) 584-7682
- East Hartford (860) 716-7458
- Litchfield/Winsted (860) 567-7724
- New Britain (860) 479-2187
- New London (860) 448-4882
- Norwich (860) 823-3778
- Middletown (860) 817-3330
- Torrington (203) 707-0036
- Wethersfield (860) 785-8380

CCAR RECOVERY COACHES ON CALL AT 20 HOSPITAL EMERGENCY DEPARTMENTS

- Bristol Hospital (Bristol)
- Charlotte-Hungerford Hospital (Torrington)
- Danbury Hospital (Danbury, New Milford)
- Day Kimball Hospital (Putnam)
- Griffin Hospital (Derby)
- Hartford Hospital (Hartford)
- Hospital of Central CT (New Britain)
- Johnson Memorial (Stafford Springs)
- Lawrence & Memorial (New London)
- Manchester Memorial Hospital (Manchester)
- Middlesex Hospital (Middletown)
- Mid-State Medical Center (Meriden)
- Norwalk Hospital (Norwalk)
- Rockville General Hospital (Rockville)
- St. Francis Hospital (Hartford)
- St. Mary’s Hospital (Waterbury)
- Stamford Hospital (Stamford)
- William Backus Hospital (Norwich, Plainfield)
- Windham Hospital (Windham)

FAMILY SUPPORT

FAMILY EDUCATION GROUPS

- Hartford (CRT) (860) 761-7920
- New Haven (Clifford Beers) (203) 777-8648 x 2262
- New London (Sound) (860) 439-6443
- Torrington (McCall) (860) 496-2139
- Waterbury (NAMI) (860) 882-8674

FAMILY HOPE & LOSS GROUPS

- Enfield, Middlefield (860) 349-7074

CT RECOVERY ORIENTED SUPPORT SYSTEM (CROSS) FOR YOUTH

- CT Clearinghouse : (860) 232-4424
- <https://www.ctclearinghouse.org/topics/connecticut-recovery-oriented-support-system-for-youth-cross/>

HARM REDUCTION & OVERDOSE PREVENTION

The Drop, 557 Albany Avenue; 28 Grand Street, Hartford (Greater Hartford Harm Reduction Coalition)

