









Algonquin State Forest Overview (page 1 of 3)

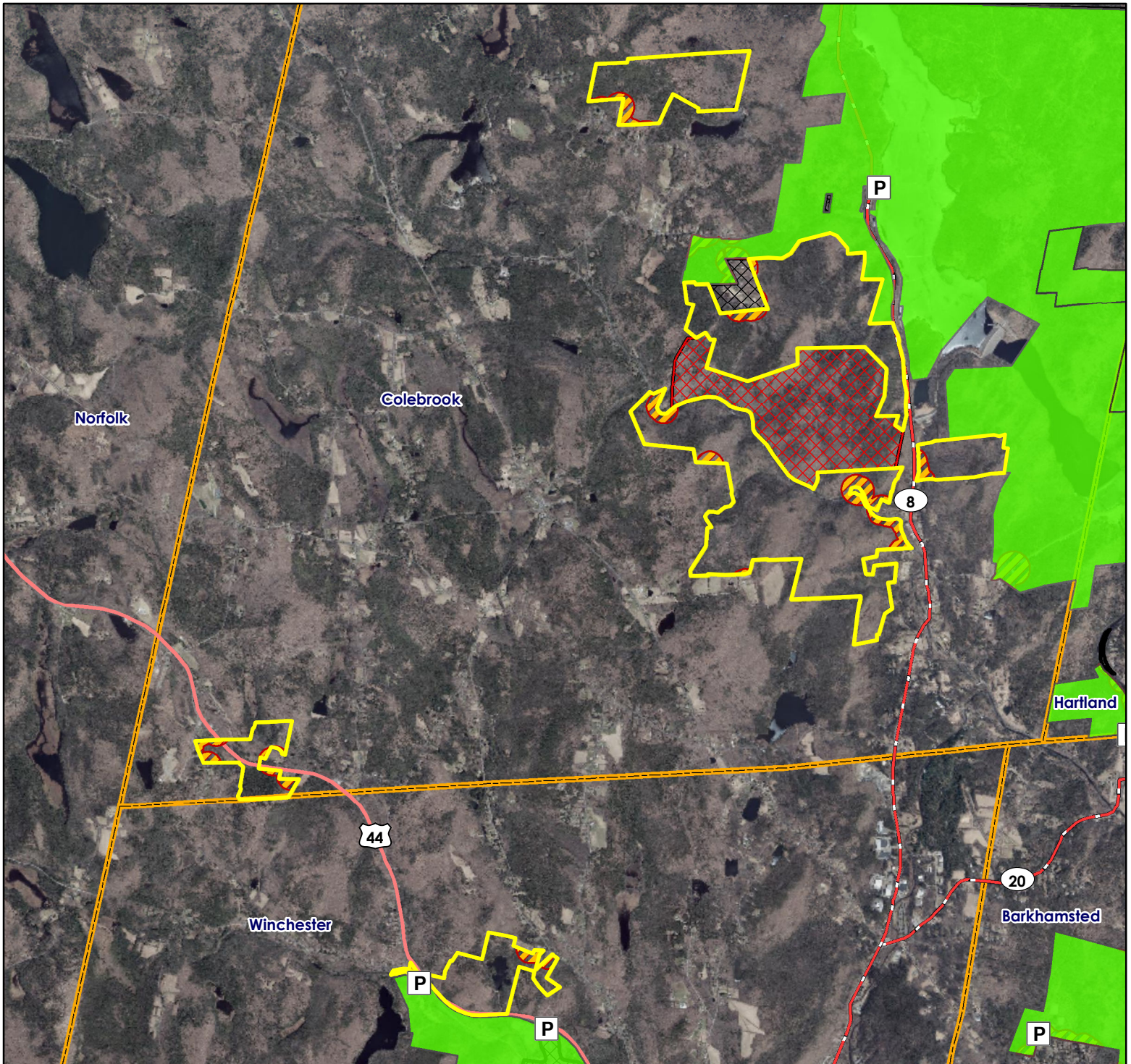


Location: Colebrook and Winchester

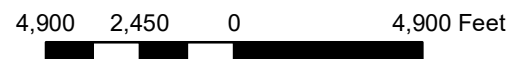
Description: 1,198 acres. Open to small game, waterfowl, spring/fall turkey and deer hunting. **KITCHEL WILDERNESS AREA IS CLOSED TO ALL HUNTING.** Please see CT Hunting Guide for more information.

Note: This map depicts an approximation of property boundaries. Please obey all postings.

- Symbols:**
-  Approximate Boundary
 -  500ft Firearms Restriction Zones
 -  Closed to Hunting
 -  Kitchel Wilderness Area Closed to Hunting
 -  Parking Area
 -  Other areas open to hunting, please see other maps for details.



Map Date: July 2023; Ortho 2019





Algonquin State Forest

page 2 of 3

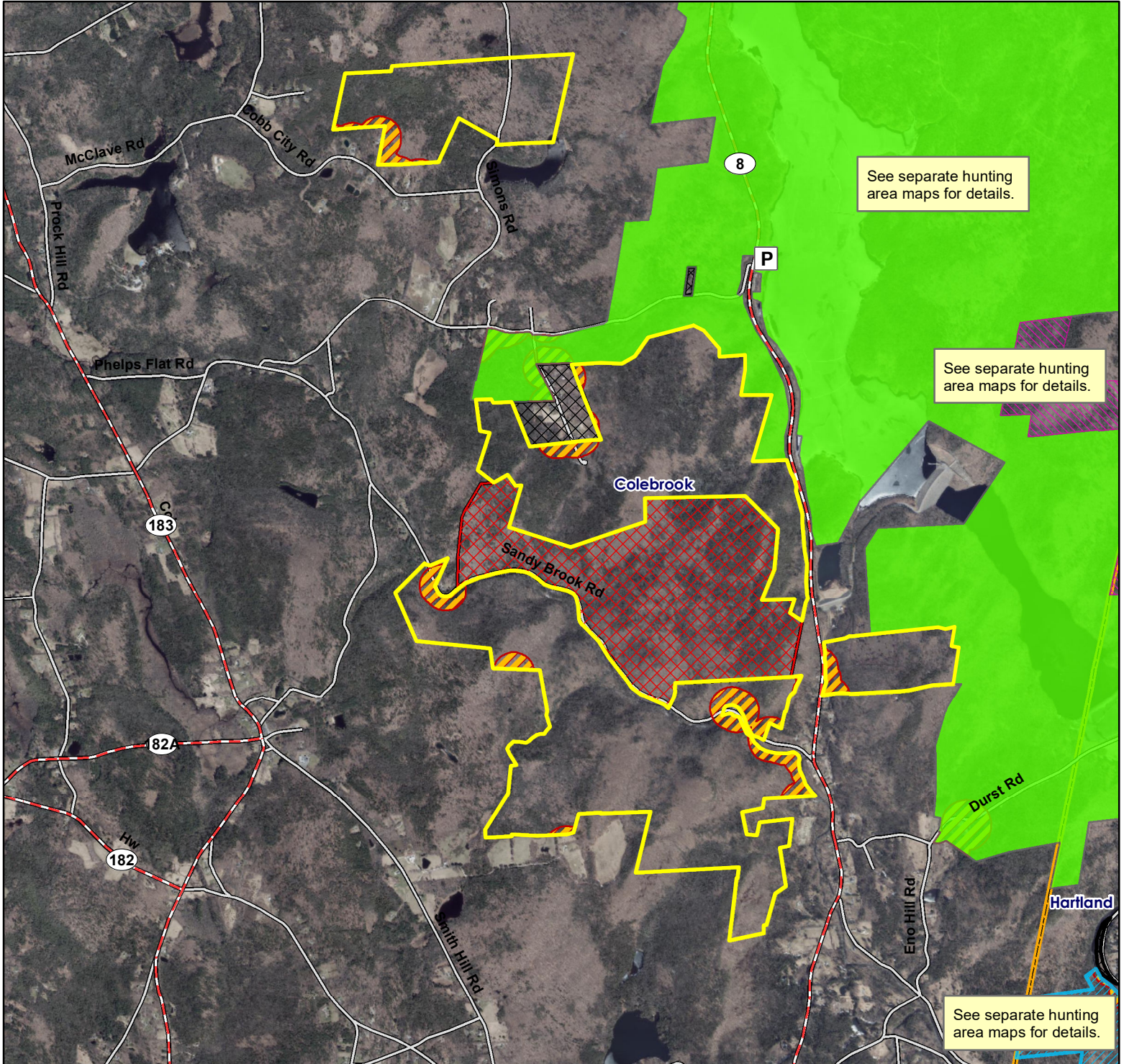


Location: Colebrook

Description: 1,198 acres. Open to small game, waterfowl, spring/fall turkey and deer hunting. **KITCHEL WILDERNESS AREA IS CLOSED TO ALL HUNTING.** Please see CT Hunting Guide for more information.

Note: This map depicts an approximation of property boundaries. Please obey all postings.

- Symbols:**
- Approximate Boundary
 - 500ft Firearms Restriction Zones
 - Closed to Hunting
 - Kitchel Wilderness Area Closed to Hunting
 - Parking Area
 - MDC- Colebrook Reservoir/ Hogback Dam
 - Tunxis SF
 - Peoples SF



Map Date: July 2023; Ortho 2019

3,000 1,500 0 3,000 Feet





Algonquin State Forest

page 3 of 3



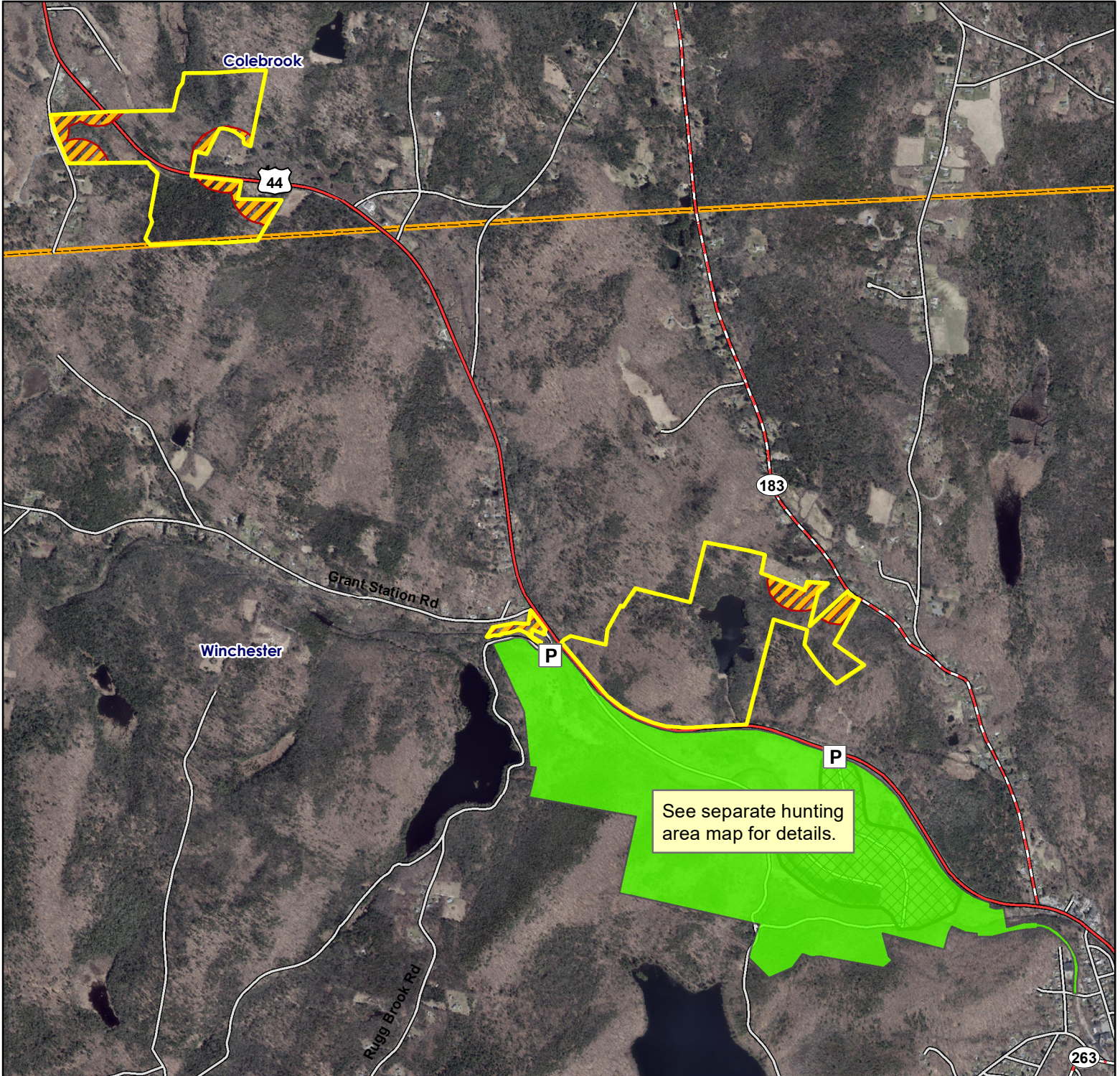
Location: Colebrook and Winchester

Description: 1,198 acres. Open to small game, waterfowl, spring/fall turkey and deer hunting. Please see CT Hunting Guide for more information.

Access: Off of Route 44.

Note: This map depicts an approximation of property boundaries. Please obey all postings.

Symbols: Approximate Boundary 500ft Firearms Restriction Zones Closed to Hunting Mad River Dam Flood Control Area Parking Area



Map Date: July 2023; Ortho 2019

2,000 1,000 0 2,000 Feet

