



# Naugatuck State Forest

## West Block



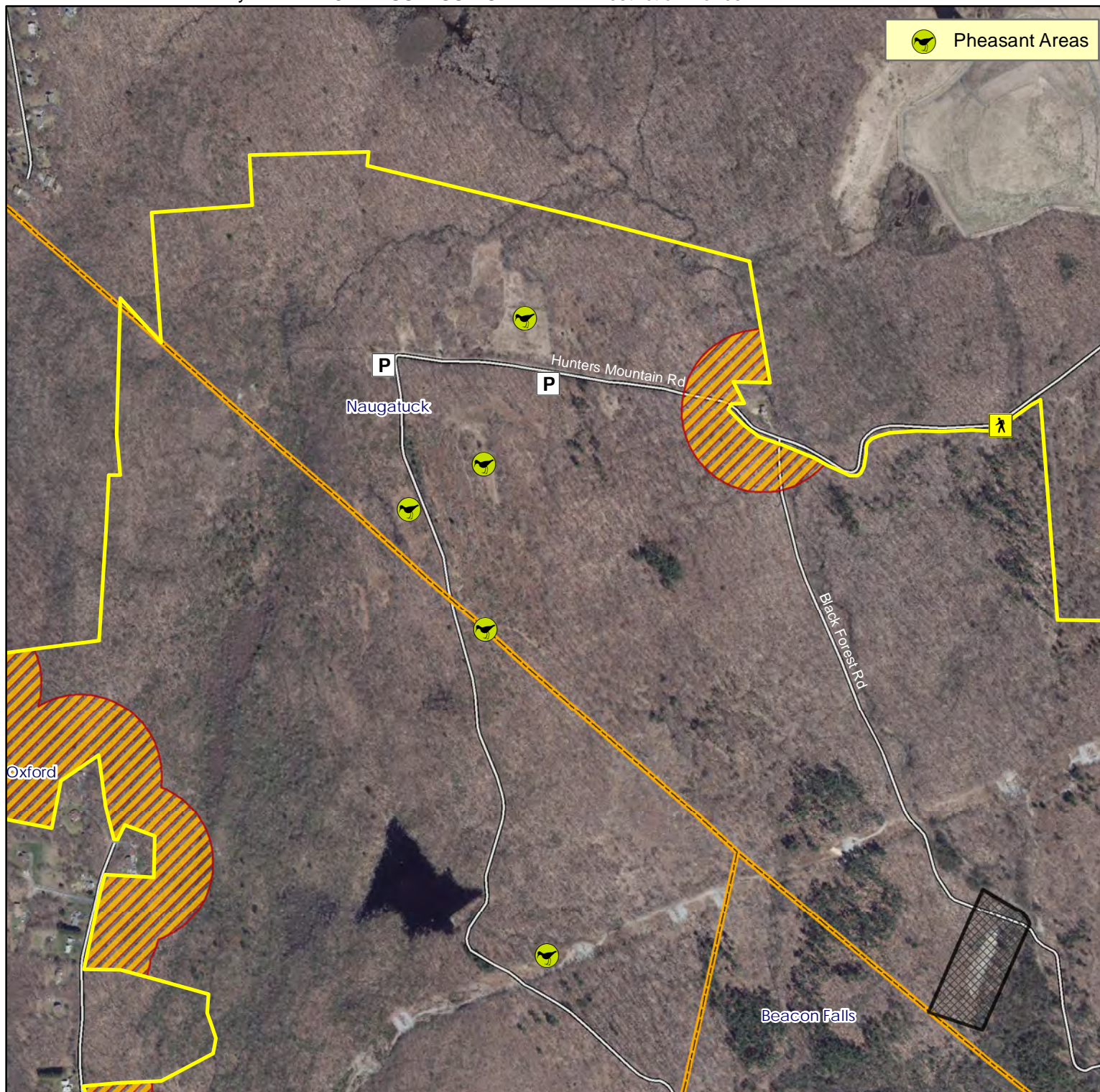
**Location:** Oxford, Beacon Falls and Naugatuck

**Description:** 2,225 acres. Mixed hardwoods, pine plantations, laurel thickets and swampy areas. Open for small game, waterfowl, pheasant, deer and turkey hunting.

**Access:** Parking areas off of Hunters Mountain Rd.

**Note:** This map depicts an approximation of property boundaries. Please obey all postings.

**Symbols:** Approximate Boundary High Rock Shooting Range; NO TRESSPASSING 500ft Firearms Restriction Zones Parking Area Access Point



Map Date: May 2024; Ortho 2019

890 445 0 890 Feet