

Chatfield Hollow State Park (CHSP) Paving Tree and Stump Removal Public Outreach Briefing

Oak Lodge Nature Center
Killingworth, CT

Monday October 23, 2023, at 2:00 PM

CT DEEP Parks & Forestry in cooperation with DEEP Engineering Unit



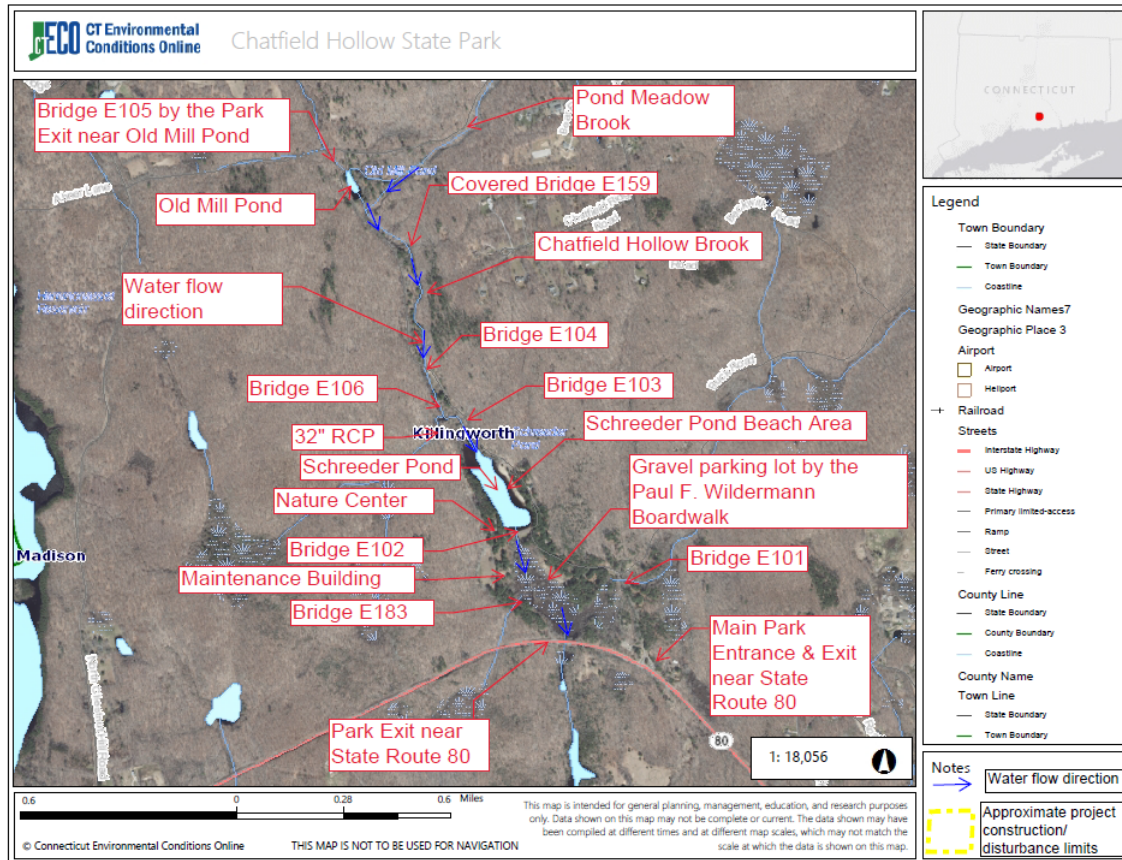
Agenda for Today's Meeting

- Introduce the DEEP Team members.
- Formal Presentation of the CHSP Paving Project Scope of Work focusing on the Tree and Stump Removal Work, Anticipated Impacts, Anticipated Project Schedule and Mitigation Efforts.
- Open the floor up to any questions and comments from the public.



CHSP Paving Project – Purpose and Need

- Linear Paving Project throughout the entire park is being undertaken. Paving project to cover main park roadway, parking lots and pull off areas.
- **Part of the Restore CT State Parks Initiative.**



Connecticut Department of Energy and Environmental Protection

CHSP Paving Project – Scope of Work

- Project Scope of Work will involve:
 - **Tree and stump Removal Work – Distinctive Tree Care, LLC.**
 - **Site & Preparation Work** – Surface & Subsurface drainage replacement (culverts, swales etc. **plus stump removal work – Tilcon Connecticut, Inc.**
 - Full Depth Reclamation – Rafferty Fine Grading, Inc.
 - Paving (Bituminous concrete complete – In – place) – Tilcon Connecticut, Inc.
 - Line striping – contractor to be determined at a later date
 - Topsoiling, hydroseeding, **tree replacement work – Contractor tbd at a later date.**



Tree and Stump Removal Work at CHSP

- Over **155 +/- trees** throughout the park that vary in diameter at breast height (dbh) from 3" - 32" and height from 10' – 100' +/-.
- Approximately **50 +/- trees** in expansion parking lot area (150'L x 25'W) by the park entrance. Parking expansion area to help reduce/eliminate cars that park on State Route 80. in winter months when park gates are closed posing a safety hazard.
- It is anticipated that approximately **40 +/- tree stumps** from the cut trees will be removed throughout the park. All stump removal holes will be filled in with 1 – ¼" process material to prevent causing a safety hazard.
- Work to be performed using **qualified contractors** utilizing various state contracts.
- All **above grade tree removal work** will be conducted by **Distinctive Tree Care, LLC** while **most below grade stump removal work** will be conducted by **Tilcon Connecticut, Inc.**
- **No heritage trees** among those marked.



Tree and Stump Removal Work at CHSP

- Trees were marked by park staff in cooperation with DEEP Engineering Unit staff with **orange paint** after conducting a walkthrough of the entire park during the project scoping phase.
- Trees marked were those near the edges of the park roadway, parking lots and pull off areas and interfering with the park infrastructure and/or to accommodate infrastructure improvements.
- One **orange dot** = tree to be cut.
- Two **orange dots** = tree to be pruned.
- Trees being cut and removed are those that are:
 - already impeding existing pavement infrastructure.
 - determined to impede pavement in the near future (5 years or less).
 - currently already impeding drainage structures.
 - are hazard trees for public safety.
 - to accommodate infrastructure improvements i.e. entrance parking lot expansion and widening of entrance of gravel parking lot to two – way traffic.



Tree and Stump Removal Work at CHSP

Tree Species of trees marked to be cut. Tree species identified by **DEEP State Forester**.

- Eastern White Pine (*Pinus strobus*): 134
- Sugar Maple (*Acer saccharum*): 7
- Red Maple (*Acer rubrum*): 3
- Black Birch (*Betula lenta*): 2
- Tuliptree (*Liriodendron tulipifera*): 2
- American Beech (*Fagus grandifolia*): 1
- Northern Red Oak (*Quercus rubra*): 3
- Elm (*Ulmus* spp.): 1
- Eastern Redcedar (*Juniperus Virginiana*): 1
- White Oak (*Quercus alba*): 1

Total throughout Park: 155 trees

Another 50 +/- in the parking lot expansion area by the park entrance.

Overall Total: Approx. 200 +/- trees

Connecticut Department of Energy and Environmental Protection



Tree and Stump Removal Work at CHSP

Chatfield Hollow State Park Tree Removal/ Road Project Killingworth, CT

September 29, 2023



CT Environmental
Conditions Online

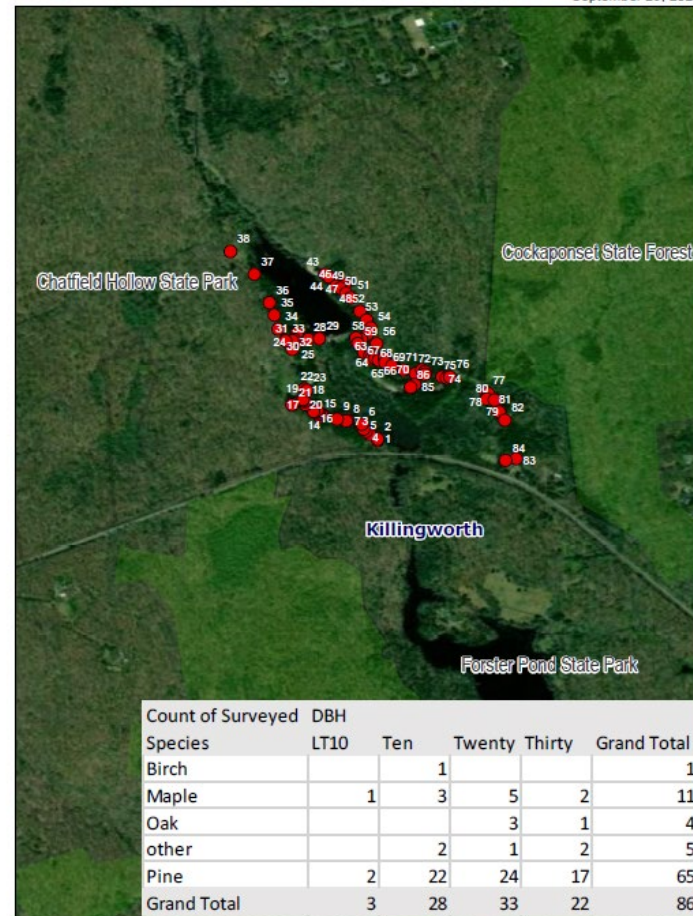
Park Entrance near route 80 leading up to bridge E101



Legend

- Town Boundary
- State Boundary
- Town Boundary
- Coastline
- Light Gray Canvas Base
- Approximate project construction/ disturbance limits
- Approximate parking lot expansion area

Notes



0 320 640 1,280 1,920 2,560 Feet



Connecticut Department of Energy and Environmental Protection

Tree and Stump Removal Work at CHSP

- Per DEEP State forester, exact number of tree density within the park is not readily available, however, it is anticipated to be in the 100,000s of trees. Approximately over 90% of the park consists of tree/forest cover.
- Approximately **200 +/- trees** anticipated to be cut during the paving project.
- $200/100,000 = 0.002\%$.
- Only a very small fraction (0.002%) of all the trees at Chatfield Hollow SP is being removed.
- It is anticipated that this tree cutting and removal work **will overall not significantly impact the feeling and setting of the dense forest that characterizes the park.**



Tree and Stump Removal Work at CHSP

- Most trees will be cut above grade and stumps left in place.
- Only trees whose stumps are impeding existing pavement and/or drainage structures plus those in expansion area will have their stumps removed.
- All efforts will be taken to **minimize land and wetlands disturbance** when performing this tree and stump removal work.



Tree and Stump Removal Work at CHSP

- Majority of trees to be cut to be cut to log specifications and hauled to **DEEP Sawmill facility** in Portland, CT. Sawmill uses this wood to make items like park picnic tables, park signs etc. that are used throughout the state.
- Some trees will be chipped on – site.

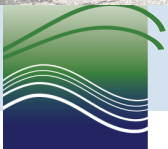


Connecticut Department of Energy and Environmental Protection



Tree and Stump Removal Anticipated Impacts

- **Vegetation, Wildlife and other Special Concern species** - Per NDDDB review, there are **2 State Endangered, Threatened or Special Concerns Species** at the project site: **Spotted turtle** and **Eastern box turtle**. BMPS recommended in the NDDDB approval letter will be implemented to avoid impacts to listed species.
 - Per USFWS's review, there is **"no effect"** on the **northern long eared bats** at the site. Also tree and stump removal work anticipated to take place from December 2023 – March 2024 which is outside of the bat pupping season.
 - **Noise** from tree cutting equipment and haul trucks. This **impact is temporary in nature**.
 - **Dust** from tree cutting and moving haul trucks. This **impact is temporary in nature**.



Tree and Stump Removal Anticipated Impacts

- **Vegetation, Wildlife and other Special Concern species** –
 - Only a very small fraction (0.002%) of all the trees at Chatfield Hollow SP is being removed.
 - It is anticipated that this **tree cutting and removal work will overall not significantly impact the feeling and setting of the dense forest that characterizes the park.**
- **Watercourses and Wetlands** – Minimal to no impact to Chatfield Hollow Brook, Old Mill Pond, Schreeder Pond and wetlands at the park. Erosion and Sediment control measures will be installed and monitored to limit impact to the watercourses and wetlands at the park over the project duration. Storm water pollution control plan to be adhered to as well.



Tree and Stump Removal Anticipated Impacts

- **Visitor use and experience** – **Temporary road plus partial and/or full park closures anticipated** in order for contractor to be able to efficiently and **safely carry out the work**. All efforts will be taken to limit impact to the recreating public while ensuring **contractor and recreating public safety**. Overall, park users **are expected to benefit long term** from the project.
- **Park Operations and Personnel** – **Minimal and temporary impacts** from construction vehicles, road and partial and/or full park closure, turning off of power for a few days and/or week to enable the effective and safe removal and cutting of trees near powerlines by the contractor. Overall, park personnel **are expected to benefit long term** from the project.



Connecticut Department of Energy and Environmental Protection

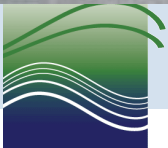
Tree and Stump Removal Anticipated Impacts

- **Archaeological** – Most of the project work is to take place in previously disturbed soils/areas along the edges of the park roadway, parking lots and/or pull off areas. As such, **no to minimal impacts anticipated** in those areas.
- **Archaeological reconnaissance survey conducted for parking lot expansion** near the park entrance. 3 soil test pits conducted in the expansion area. **No Indian artifacts found.** No findings worth pursuing further. As such, **no to minimal impacts** anticipated in this area.



Recent Fallen Tree creating Hazardous condition

- Recent fallen tree during recent storm at the park blocking park roadway west of Schreeder Pond creating a safety hazard condition. Tree had to be cut and removed by Parks staff.



Tree and Stump Removal Anticipated Schedule

- Projected/Anticipated Paving Project Timeframe:
 - a. **Tree and Stump Removal Work – December 2023 – March 2024**
 - b. Site and Prep Work – December 2023 – March 2024
 - c. Full Depth Reclamation Work – early to Mid – April 2024
 - d. Paving Work - May 2024
 - e. Line striping/Epoxy Markings – June/July 2024
 - f. **Topsoiling, Hydroseeding, Replacement Tree Plantings – June/July 2024**
- Anticipated Work Hours:
M – F, 7:30am – 4pm. Work outside these days and hours is not anticipated.
- All work shall confirm to the latest edition of the CT DOT Specifications for Roads, Bridges, Facilities and Incidental Construction Form 818.
- Erosion and Sediment (E &S) measures will be implemented based on the 2023 Connecticut Guidelines For Soil Erosion and Sediment Control and the Storm Water Pollution Control Plan.



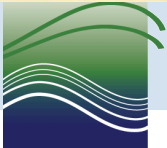
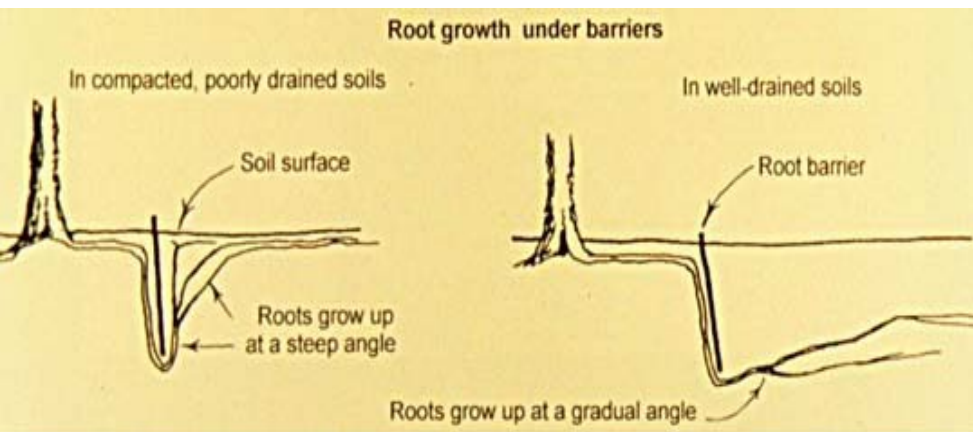
Mitigation Efforts

- One of the project goals is to **create a system that can accommodate tree roots while minimizing interference and damage to the park infrastructure.**
- Over **\$20,000** budgeted for in replacement tree plantings as part of the project. Please note that **not all** trees being cut are anticipated to be replaced.
- Replacement trees will be placed in buffer areas surrounding the park roadway and parking lots where they are not anticipated to interfere and damage the park infrastructure.
- Buffer areas around the roadway and parking lots will be large enough to provide roots with adequate space to grow. Ideally replacement trees will be planted in areas where there is a 10 – 15 foot buffer from existing pavement and or structures.



Mitigation Efforts

- Root barriers are anticipated to be installed for replacement trees within a 5 foot distance of existing pavement.
- There will be restoration of the pre – construction contours and elevations to the greatest extent as part of the project.



Questions and/or Comments

Written questions and/or comments can be submitted by **November 06, 2023** to Email:
DEEP.Hazardtrees@ct.gov



Connecticut Department of Energy and Environmental Protection