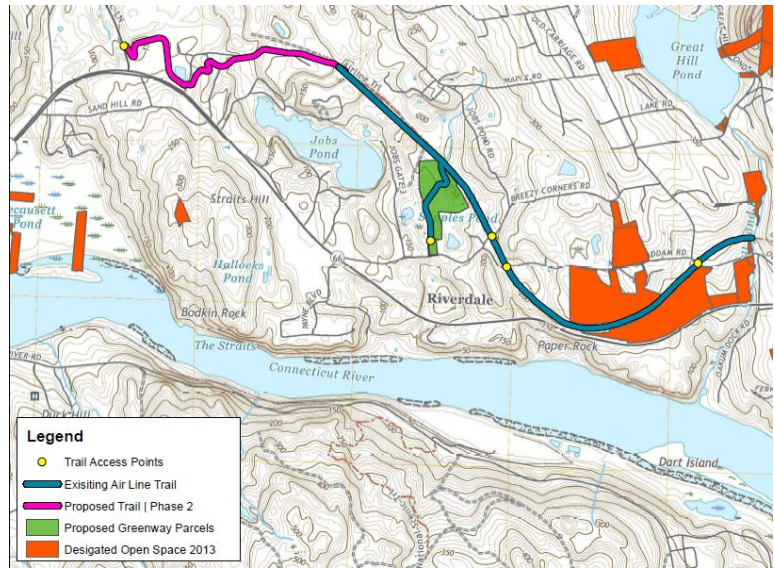


## 2021 Newly Designated Greenways

### The Portland Air Line Trail Spur

The Portland Air Line Trail Spur was a result of Portland's foresight in purchasing 22 acres of open space to have a connection from an accessible parking lot to the trail. In doing so hikers, bicyclists, cross country skiers and horseback riders are treated to a wide variety of flora which include various deciduous trees, flowering bushes and several types of ground cover. When one continues along this pathway a marsh and babbling brook come into view. Several vernal pools are next and a pollinator garden is scheduled for a spring 2021 planting.



The Air Line Trail includes several historic sites, including railroad artifacts, interpretive signs describing the railroad era, and the historic Railroad Trestle, located along the trail. This spur connects its users with the Portland section of the Air Line Trail which also connects to a Blue Blazed Hiking Trail.

### Wethersfield Heritage Way Greenway

The Wethersfield Heritage Way is a cross-town, ten (10) mile long bicycling and walking route that connects and explores a wealth of recreational, historical, agricultural, open space and natural assets in one of Connecticut's oldest towns. The Heritage Way begins at the 1860 Reservoir in the southwestern corner of the town, past farmlands and the historic village of Griswoldville, through town parks, wooded trails and school yards, across a rail corridor to the Wethersfield Cove, on town streets through the heart of Old Wethersfield the largest Historic District in the State, beneath the planned Putnam Bridge Trail, through the Connecticut River floodplain and farms of the Great Meadows, and along the west bank of the Connecticut River. The Heritage Way then connects directly with the Rocky Hill Great Meadows Greenway and the Rocky Hill Glastonbury Ferry.

