

## **Open Space Report to the Finance, Revenue and Bonding Committee and the State Bond Commission**

**November 2020**

### **Overview**

Section 22a-6v of the General Statutes of Connecticut requires the Commissioner of the Department of Energy & Environmental Protection to submit a report to the joint standing committee of the General Assembly having cognizance of matters relating to finance, revenue and bonding and to the State Bond Commission each month. The report provides information on the acquisition of land or interests in land by the state, a municipality, water company or nonprofit organization using funds authorized for the Open Space and Watershed Land Acquisition Program established under Sections 7-131d and the Recreation and Natural Heritage Trust Program established under Sections 23-73 to 23-79 of the Connecticut General Statutes.

### **Open Space and Watershed Land Acquisition Grant Program**

The Open Space and Watershed Land Acquisition Grant Program provides grants to municipalities and private nonprofit land conservation organizations for the acquisition of open space land and to water companies to acquire land to be classified as Class I or Class II watershed land. The State of Connecticut receives a conservation and public access easement on property acquired to ensure that the property will be protected and available to residents of Connecticut as open space in perpetuity. The following two properties were funded in November 2020.

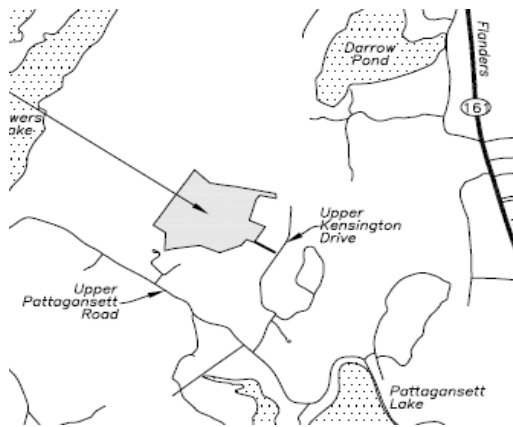
<b>Sponsor</b>	<b>Project</b>	<b>Town</b>	<b>Acres Protected</b>
South Central Connecticut Regional Water Authority	Hendrickson Property	Hamden & Bethany	6.67
East Lyme Land Trust, Inc.	Pattagansett River Watershed Property	East Lyme	37.99

**South Central CT Regional Water Authority (RWA)**  
**Hendrickson Property**  
**1420 West Woods Road, Hamden & 350 Brooks Road, Bethany**  
**6.67 Ac. Fee Acquisition**

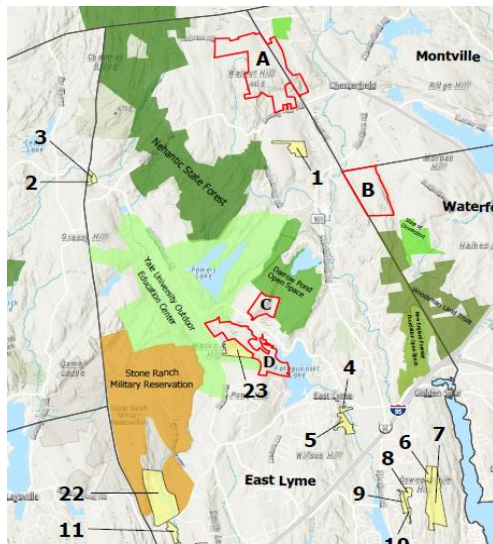


This property borders other RWA property to the southeast and across the street to the west. In total, the RWA owns 162 acres abutting the Hendrickson property. All of the land is within the Lake Watrous public water supply watershed and the West Rock Ridge Conservation Area. Approximately 5.4+/- acres will become Class I land and 1.6+/- acres will become Class II land. An unnamed watercourse and tributary to the West River flow through the property. This acquisition provides valuable connectivity to a section of the 19-mile blue blazed Quinnipiac Trail, which is maintained by the Connecticut Forest and Park Association.

**East Lyme Land Trust, Inc.**  
**Pattagansett River Watershed Property**  
**37.99 Ac. Fee Acquisition**



**Parcel C below**



This parcel includes a 12 acre early successional forest, wetlands, vernal pools, rock outcroppings and ledges, sweeping vistas of Pattagansett Lake and winter views of Long Island Sound. The early successional forest is a habitat with vigorously growing grasses, shrubs and trees which provide excellent food and cover for wildlife. The diverse variety of wildlife includes songbirds, turkey, grouse, deer, rabbit, fox, native bees and many more species drawn to old fields, thickets and young forest with an abundance of plants, brush and insects. The parcel is surrounded on three sides by 4,000+ acres of open space including Darrow Pond Open Space (301 acres), Yale University (1,875 acres), Nehantic State Forest (2,300 acres) and a Trail connection to the 14 mile Goodwin Trail. A wetland on the easterly boundary forms the headwaters of the Pattagansett Watershed, which supplies half of the drinking water for the Town of East Lyme. There is potential to create trails that connect to the 14-mile Goodwin Trail. Recreational opportunities include hiking, rock climbing, birdwatching, wildlife viewing, photography, cross-country skiing, snowshoeing, geocaching and bicycling.



## **Recreation and Natural Heritage Trust Program**

The Recreation and Natural Heritage Trust Program is the State of Connecticut's primary program for the acquisition of lands for the beneficial use and enjoyment of the public as additions to the State's system of parks, forests, wildlife, fisheries and natural resource management areas. The program acquires land that represents the ecological diversity of Connecticut, including natural features such as rivers, mountainous areas, coastal systems and their natural areas, in order to ensure the conservation of such land for recreational, scientific, educational, cultural and aesthetic purposes. There were no Recreation and Natural Heritage Trust Program closings in November 2020.