

Open Space Report to the Finance, Revenue and Bonding Committee and the State Bond Commission

August 2020

Overview

Section 22a-6v of the General Statutes of Connecticut requires the Commissioner of the Department of Energy & Environmental Protection to submit a report to the joint standing committee of the General Assembly having cognizance of matters relating to finance, revenue and bonding and to the State Bond Commission each month. The report provides information on the acquisition of land or interests in land by the state, a municipality, water company or nonprofit organization using funds authorized for the Open Space and Watershed Land Acquisition Program established under Sections 7-131d and the Recreation and Natural Heritage Trust Program established under Sections 23-73 to 23-79 of the Connecticut General Statutes.

Open Space and Watershed Land Acquisition Grant Program

The Open Space and Watershed Land Acquisition Grant Program provides grants to municipalities and private nonprofit land conservation organizations for the acquisition of open space land and to water companies to acquire land to be classified as Class I or Class II watershed land. The State of Connecticut receives a conservation and public access easement on property acquired to ensure that the property will be protected and available to residents of Connecticut as open space in perpetuity. The following three acquisitions closed in August 2020.

Sponsor	Project	Town	Acres Protected
Deep River Land Trust, Inc.	Pratt Cove Marsh Property	Deep River	8.07
East Haddam Land Trust, Inc.	Sakolsky Property	East Haddam	23.229
East Haddam Land Trust, Inc.	Nichols Property	East Haddam	86.664

Deep River Land Trust, Inc.
Pratt Cove Marsh Property
7.7 Acres & 0.37 Acre Fee Acquisition



This acquisition consists of two parcels, a 0.37+/- acre parcel on the waterfront which abuts the Deep River Land Trust Smyth Sanctuary and a 7.7+/- acre upland parcel that abuts the 12.8 acre Bidwell Preserve and a 6.18 acre property preserved by The Nature Conservancy. The Pratt Cove Marsh is a critical habitat of the Silvio Conte National Fish and Wildlife Refuge, forming an interconnecting habitat of just over 28 acres with open vistas.

The Pratt Cove Marsh is a freshwater tidal wetland of the lower Connecticut River designated as Internationally Important by The Ramsar Convention. Nearly the entire marsh is designated as Critical Habitat by DEEP.

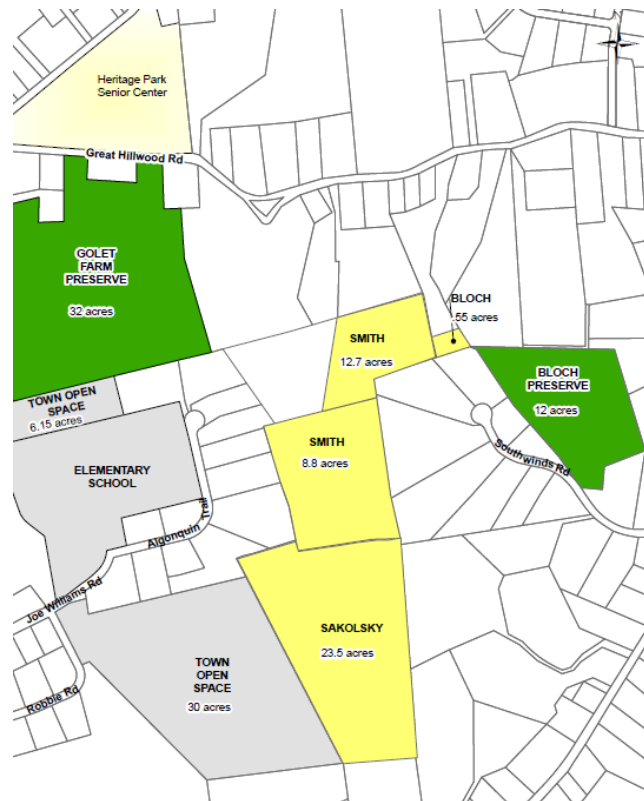
Both parcels provide passive recreational opportunities with parking, access to trails and a (State) dock and kayak/canoe launch.

East Haddam Land Trust, Inc.
Sakolsky Property
23.229 Ac. Fee Acquisition

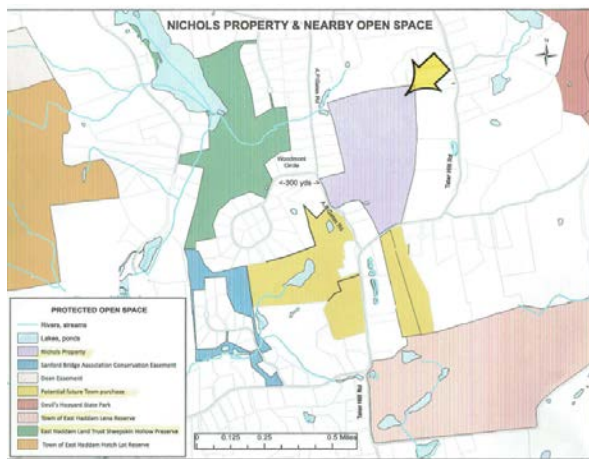
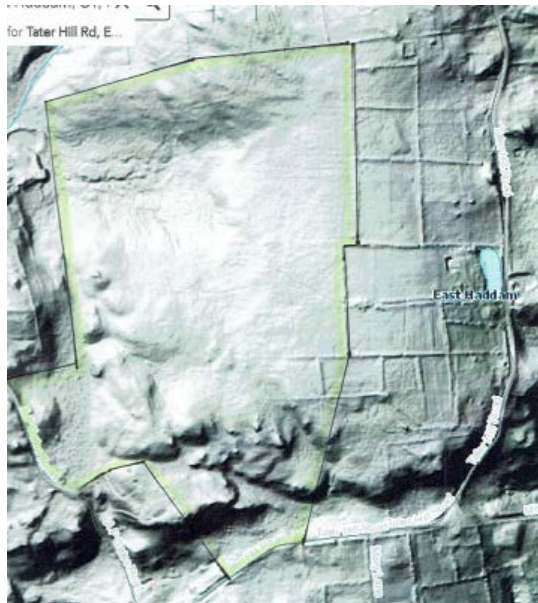


This is the 2nd parcel submitted by East Haddam Land Trust, Inc. utilizing OSHA funds (the 1st being the 12+ acre Bloch Preserve), to develop a 100-acre interconnecting greenway within Moodus Village.

This property contains a wetland and associated habitat that drains into Wigwam Brook and then to the Salmon River. It also contains an upland hardwood forest habitat.



East Haddam Land Trust, Inc.
Nichols Property
86.664 Ac. Fee Acquisition



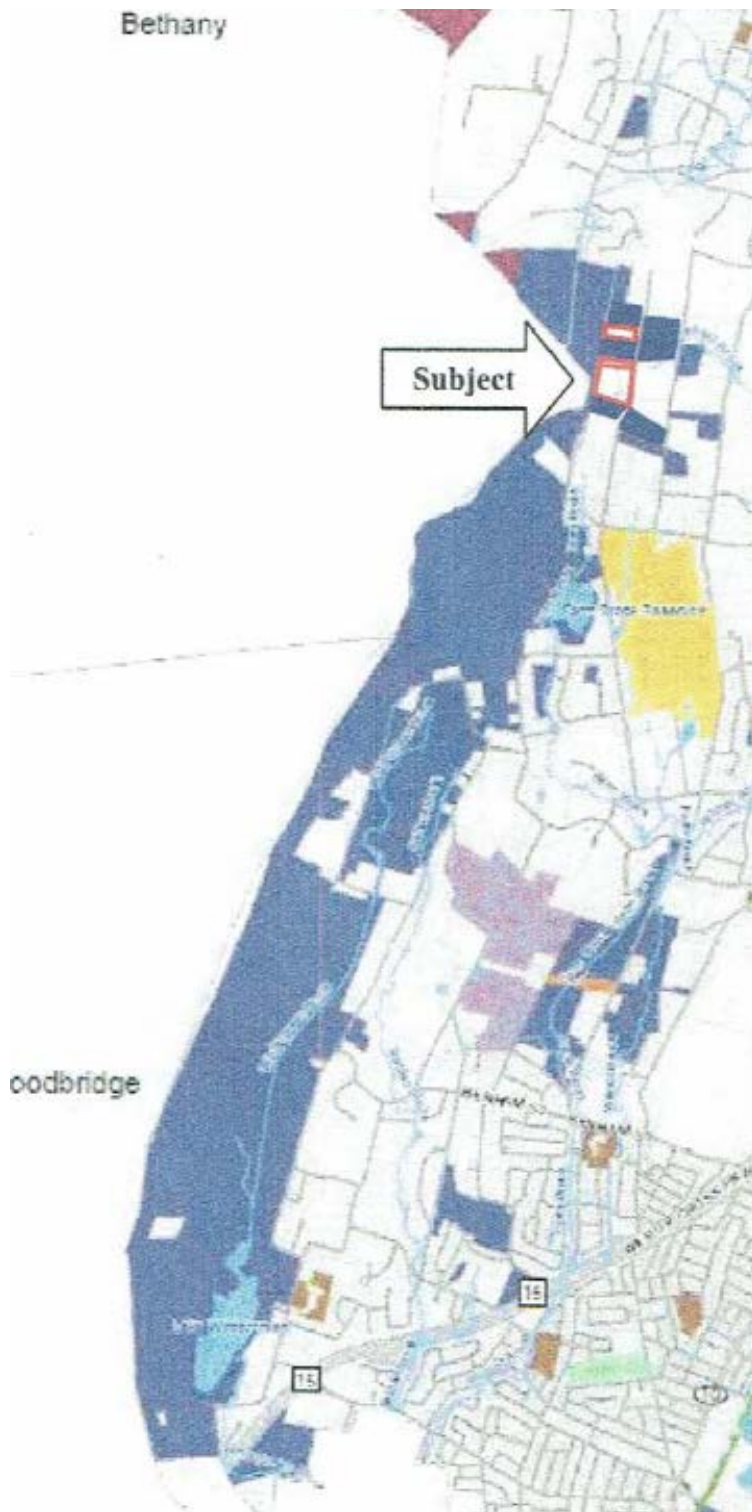
This undeveloped woodlot with frontage on Tater Hill and A.P. Gates Roads, contains a wetland that drains, via a small brook, into Roaring Brook, Whalebone Cove and eventually the Connecticut River. It is within the Lyme Forest and contains multiple habitats including upland hardwood forest that coyote, turkey, deer and bobcat frequent, it is inhabited by wood ducks and woodcock. It is adjacent to the Eight Mile Wild & Scenic Watershed, featuring several logging/tractor trails that would enhance public access.

Recreation and Natural Heritage Trust Program

The Recreation and Natural Heritage Trust Program is the State of Connecticut's primary program for the acquisition of lands for the beneficial use and enjoyment of the public as additions to the State's system of parks, forests, wildlife, fisheries and natural resource management areas. The program acquires land that represents the ecological diversity of Connecticut, including natural features such as rivers, mountainous areas, coastal systems and their natural areas, in order to ensure the conservation of such land for recreational, scientific, educational, cultural and aesthetic purposes. The following two acquisitions closed in August 2020. Additional information on these projects follows.

Property Name	Town	Cooperator	Cooperat or Share	State Share	Acreage	Purpose of Acquisition
Raccio Properties	Hamden	N/A	N/A	\$75,000	18.86	Addition to West Rock Ridge State Park
Thompson	Lyme	N/A	N/A	\$310,000	85.36	Addition to Nehantic State Forest

**Raccio Properties
1000, 1112 & 1150 Hill Street, Hamden
West Rock Ridge State Park
18.86 Acre Fee Purchase**

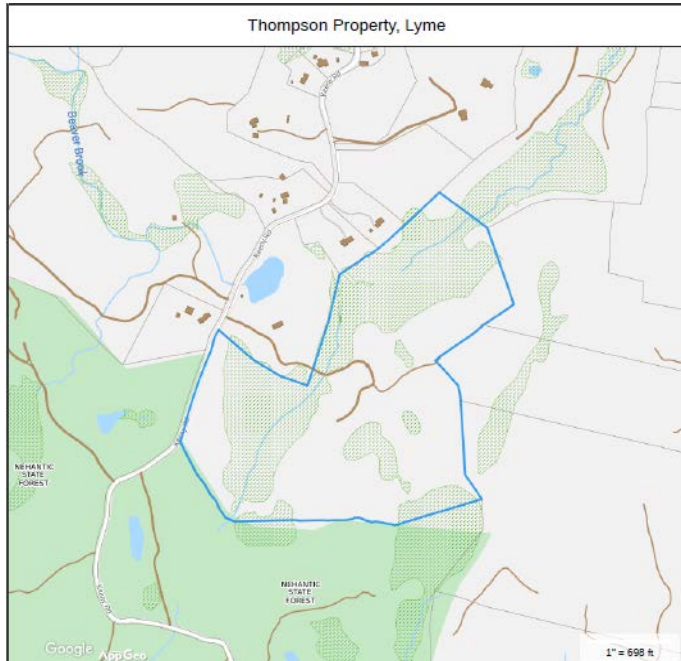


This acquisition consists of three parcels, in the northwest corner of Hamden just east of the Bethany town line. They are within the West Rock Ridge Conservation Area and will be added to West Rock Ridge State Park.

1000 & 1112 Hill Street contain a combined 13.79 acres and 1150 Hill Street contains 5.07 acres. The three parcels are essentially landlocked with frontage on Hill Street & Rayzoe Terrace (both paper streets).

The parcels are entirely forested, further protecting other properties purchased for watershed protection and passive recreational uses within West Rock State Park.

**Thompson Property
Keeney Road, Lyme
Nehantic State Forest
85.36 Acre Fee Purchase**



The Thompson property consists of 85.36 acres of land located at the northeast corner of Nehantic State Forest. A portion of the property is subject to a conservation easement held by the Town of Lyme. The property features a mix of forest and swamp and extends the forest to the intersection of the paved and unpaved portion of Keeney Road. The acquisition expands the passive recreational opportunities in the forest.

