

Open Space Report to the Finance, Revenue and Bonding Committee and the State Bond Commission

January 2015

Overview

Section 22a-6v of the General Statutes of Connecticut requires the Commissioner of the Department of Energy & Environmental Protection to submit a report to the joint standing committee of the General Assembly having cognizance of matters relating to finance, revenue and bonding and to the State Bond Commission each month. The report provides information on the acquisition of land or interests in land by the state, a municipality, water company or nonprofit organization using funds authorized for the Open Space and Watershed Land Acquisition Program established under Sections 7-131d and the Recreation and Natural Heritage Trust Program established under Sections 23-73 to 23-79 of the Connecticut General Statutes.

Open Space and Watershed Land Acquisition Grant Program

The Open Space and Watershed Land Acquisition Grant Program provides grants to municipalities and private nonprofit land conservation organizations for the acquisition of open space land and to water companies to acquire land to be classified as Class I or Class II watershed land. The State of Connecticut receives a conservation and public access easement on property acquired to ensure that the property will be protected and available to residents of Connecticut as open space in perpetuity. The following grants were closed in January 2015. Additional information on these projects follows.

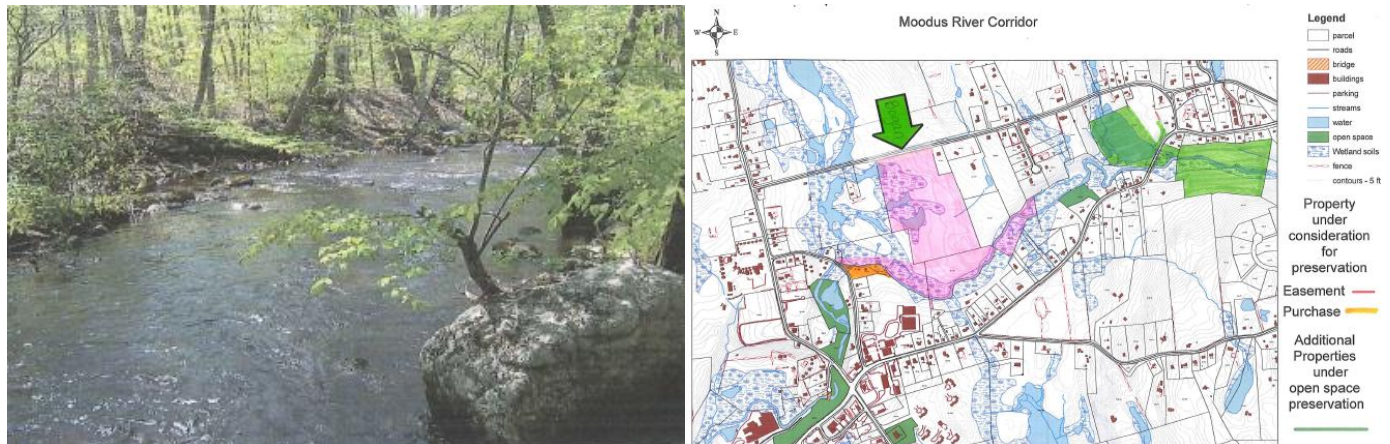
Sponsor	Project	Acres
Town of Cheshire	Puchalski Property	122.3226
East Haddam Land Trust	Bogan Property	45.56

**Town of Cheshire
Puchalski Property
Fee Acquisition**



This property provides a linkage to existing, preserved open space to the north, west and south, owned by the Town, State and Cheshire Land Trust. The existing driveway will provide parking and serve as a trailhead to the ridgeline. One cleared path runs northerly from the trailhead and the Quinnipiac Blue Trail runs along the top of the ridgeline and the entire westerly boundary. The public can also access the property from the north or south on the Blue Trail. This acquisition will protect a species identified in the Natural Diversity Database, a forested environment, an uninterrupted woodland ridge, a wildlife habitat and the Whitney watershed.

East Haddam Land Trust
The Bogan Property a/k/a Moodus River Corridor
1+/- Acre Fee & 44+/- Acres Easement



Since the East Haddam Land Trust's inception, one of its goals has been to protect the Moodus River Corridor with a linear park and walking trail. The Bogan Property is at the approximate center of the corridor and will become the gateway to the linear trail. This acquisition protects approximately 4,200 feet of the Moodus River, maintaining its quality and the quality of the Salmon River, which the Moodus River joins at Salmon Cove. There will be two parking areas, one on Clark Gates Road (the northerly road frontage) and another on the 1-acre Grist Mill Road parcel (shown in orange on map above) with trailheads leading to the Moodus River Corridor from both locations. Only two parcels remain to complete the goal of protecting this 2.5 mile linear trail. The land trust hopes to complete these acquisitions within the next 5 years. The public will be able to hike along a stream, view the remnants of old dams and mill sites, fish for trout and escape from the hustle and bustle of modern life, just 100 yards from the urban, Moodus Center.

Recreation and Natural Heritage Trust Program

The Recreation and Natural Heritage Trust Program is the State of Connecticut’s primary program for the acquisition of lands for the beneficial use and enjoyment of the public as additions to the State’s system of parks, forests, wildlife, fisheries and natural resource management areas. The program acquires land that represents the ecological diversity of Connecticut, including natural features such as rivers, mountainous areas, coastal systems and their natural areas, in order to ensure the conservation of such land for recreational, scientific, educational, cultural and aesthetic purposes. The following acquisitions were closed in January 2015. Additional information on these projects follows.

Property Name	Location	Cooperator	Match Share	Fee Acreage	Easement Restrictions or R.O.W.	State Purchase Price	Purpose of Acquisition
Gaines Property	Paradise Ave & High Rock Rd, Hamden	---	---	---	4.89 ac.	Donation	Addition to West Rock Ridge State Park

Gaines Property, Hamden Easement Donation



This 4.89 acre donation, pursuant to Special Act 75-80, amended by Special Acts 76-47 & 77-49 and the West Rock Ridge Conservation Area Supplement by Special Act 79-92, will be added to West Rock Ridge State Park. It contains a portion of the CT Blue Trail which is managed by the Connecticut Forest and Park Association. This property abuts West Rock Ridge State Park on three sides and is located within the Lake Whitney public supply watershed operated by South Central CT Regional Water Authority. Many CT Natural Diversity Database threatened or endangered species are found here.