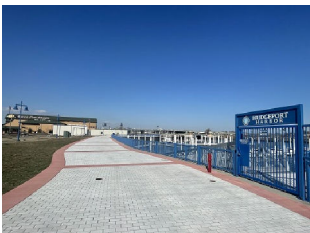


Connecticut Coastal Access Guide

Steelpointe Harborwalk
10 E Main St Bridgeport, CT 06608



Site Description: The Steelpointe Harborwalk runs from The Bass Pro Shops, along the scenic Bridgeport Harbor, and loops in front of Boca Oyster Bar. The Steelpointe Development features some awesome selections for entertainment, dining and retail - easily accessible before, during or after your stroll. The marina itself boasts 200+ slips and is easily viewed from the harborwalk. Bicycles and skateboards are not allowed, but bring your dogs (leashed, of course)! This site is open daily from 8AM-8PM.

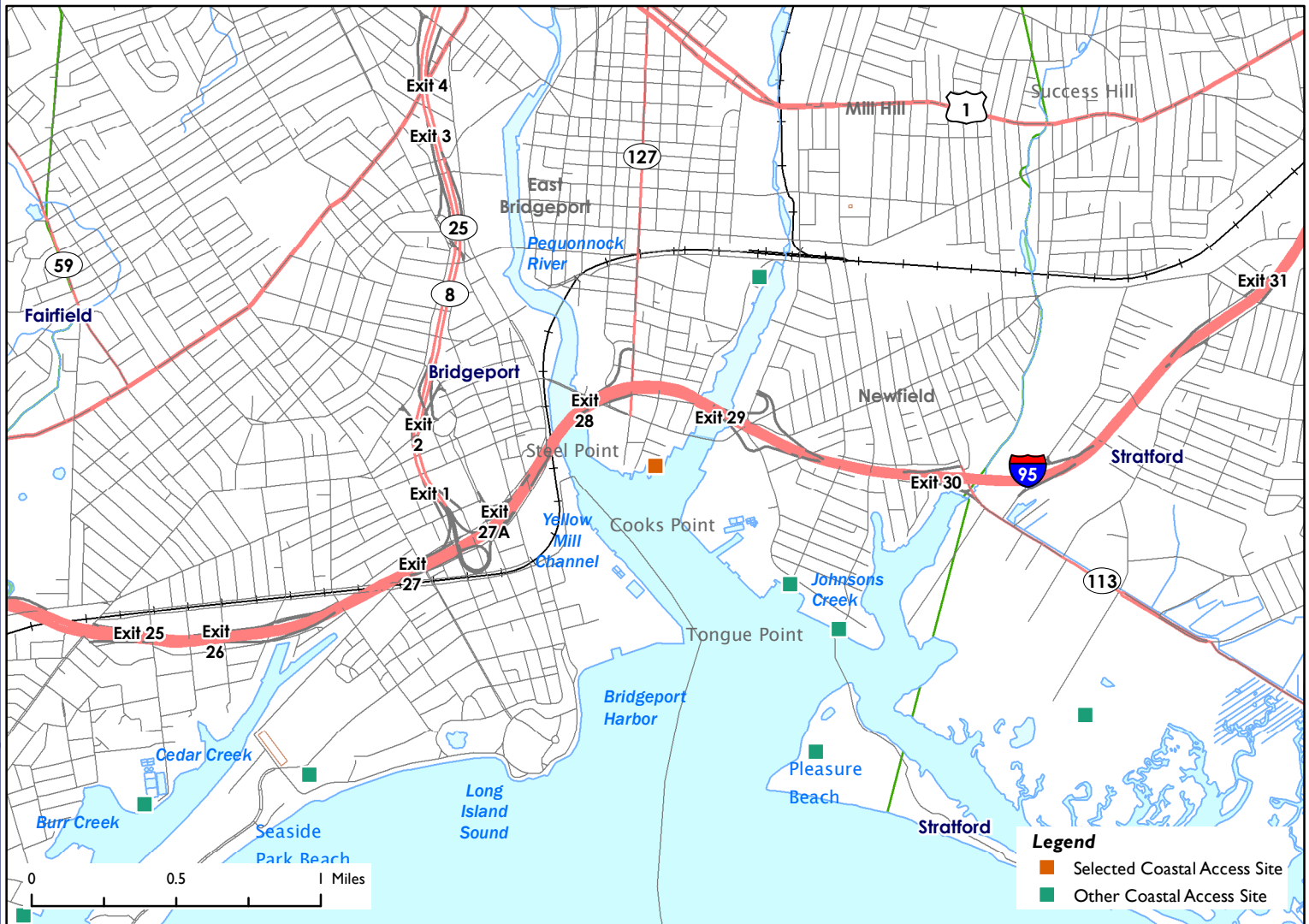
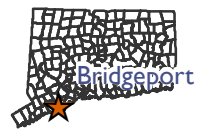


Activities			
	YES		NO
	NO		NO
	NO		NO
	NO		NO
	NO		NO
	YES		
Facilities			
	NO		YES
	NO		NO
	NO		NO
	NO		NO
	NO		NO
Environmental Setting			
	NO		NO
	YES		NO
	NO		NO
	NO		NO
	NO		NO
Parking: Parking Lot			
Fee: NO			



Connecticut Coastal Access Guide

Steelpointe Harborwalk
10 E Main St Bridgeport, CT 06608



Latitude: 41.175244 Longitude: -73.179633

Directions:

From the East: Take I-95 South to Exit 29 for Seaview Ave toward CT-130/Stratford Ave. Use either of the left two lanes to turn left onto Seaview Ave and follow it for 0.1 miles until it turns into Stratford Ave. Follow Stratford Ave for 0.4 miles, then turn left onto East Main St. Continue on East Main St until you reach Steelpointe Marina.

From the West: Take I-95 North to Exit 28 for CT-127/East Main St. Turn right onto CT-127 S/East Main St and continue until you reach Steelpointe Marina.



Additional Site Information:

General Questions or Comments:

Land and Water Resources Division
Phone: (860) 424-3019
Email: coastal.access@ct.gov
www.ct.gov/deep



CONNECTICUT DEPARTMENT OF
ENERGY & ENVIRONMENTAL PROTECTION
79 ELM STREET
HARTFORD, CT 06106-5127

EXPLORE CONNECTICUT'S SHORE



Updated: May 2022