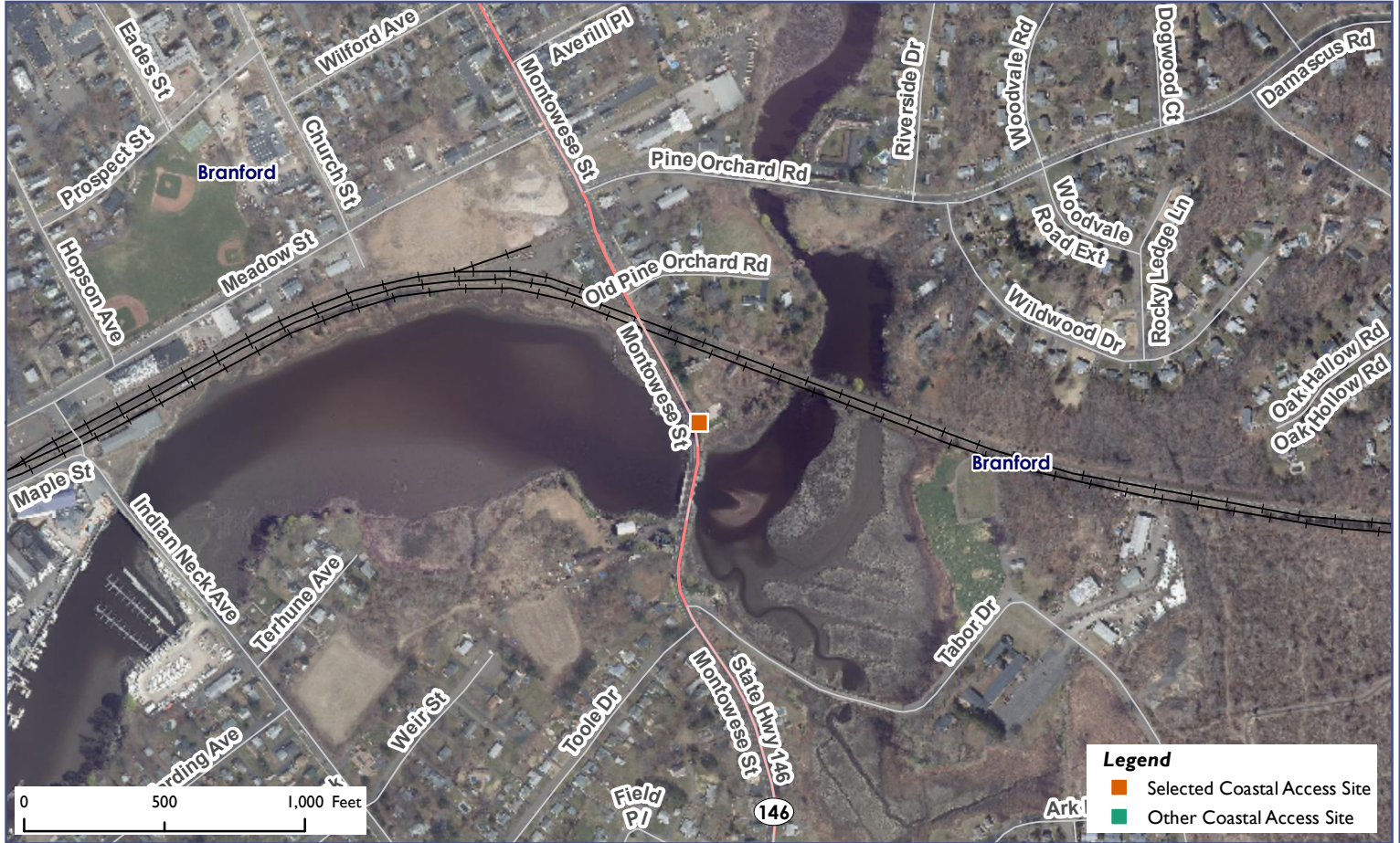


# Connecticut Coastal Access Guide

Branford River Gateway Marsh Viewing Area  
 9 South Montrowese Street Branford, CT 06405



**Site Description:** Branford River Gateway Marsh Viewing Area provides wonderful views of the Branford River from an elevated viewing platform. Plenty of parking available. Fishing access provided across the street.

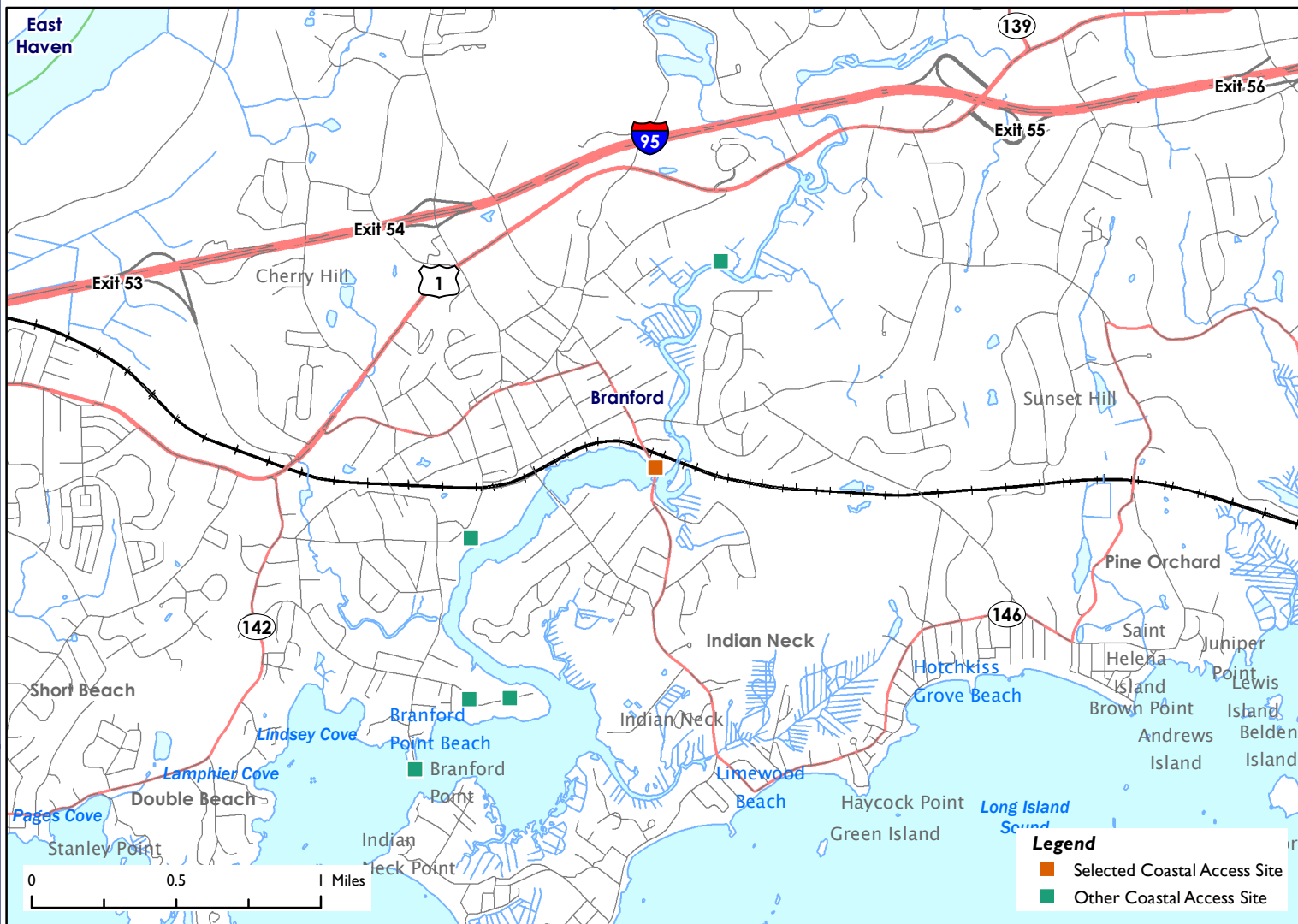


Activities			
	<b>YES</b>		<b>NO</b>
	<b>NO</b>		<b>NO</b>
	<b>NO</b>		<b>NO</b>
	<b>NO</b>		<b>NO</b>
	<b>NO</b>		<b>NO</b>
	<b>YES</b>		
Facilities			
	<b>YES</b>		<b>NO</b>
	<b>NO</b>		<b>NO</b>
	<b>NO</b>		<b>NO</b>
	<b>NO</b>		<b>NO</b>
	<b>NO</b>		<b>NO</b>
Environmental Setting			
	<b>NO</b>		<b>NO</b>
	<b>NO</b>		<b>NO</b>
	<b>NO</b>		<b>NO</b>
	<b>NO</b>		<b>NO</b>
	<b>NO</b>		<b>NO</b>
<b>Parking:</b> Parking Lot		<b>Fee:</b> NO	



# Connecticut Coastal Access Guide

Branford River Gateway Marsh Viewing Area  
9 South Montrowese Street Branford, CT 06405



**Latitude:** 41.275601 **Longitude:** -72.804889

## Directions:

**From the East:** Take I-95 South to exit 54, which is the Cedar Street exit. Turn left onto Cedar Street follow for 0.7 miles. Turn right onto North Main Street. Then take a sharp left onto West Main Street. Follow until Montowese Street which will be on right. Continue on Montowese Street and Branford River Gateway Marsh Viewing Area will be on your left.

**From the West:** Take I-95 North to exit 54, which is the Cedar Street exit. Turn right onto Cedar Street, follow for 0.7 miles. Turn right onto North Main Street. Then take a sharp left onto West Main Street. Follow until Montowese Street which will be on right. Continue on Montowese Street and Branford River Gateway Marsh Viewing Area will be on your left.



## Additional Site Information:

Town of Branford  
46 Church Street  
Branford, CT 06405

## General Questions or Comments:

Land and Water Resources Division  
Phone: (860) 424-3019  
Email: [coastal.access@ct.gov](mailto:coastal.access@ct.gov)  
[www.ct.gov/deep](http://www.ct.gov/deep)



CONNECTICUT DEPARTMENT OF  
ENERGY & ENVIRONMENTAL PROTECTION  
79 ELM STREET  
HARTFORD, CT 06106-5127

**EXPLORE CONNECTICUT'S SHORE**



Updated: May 2022