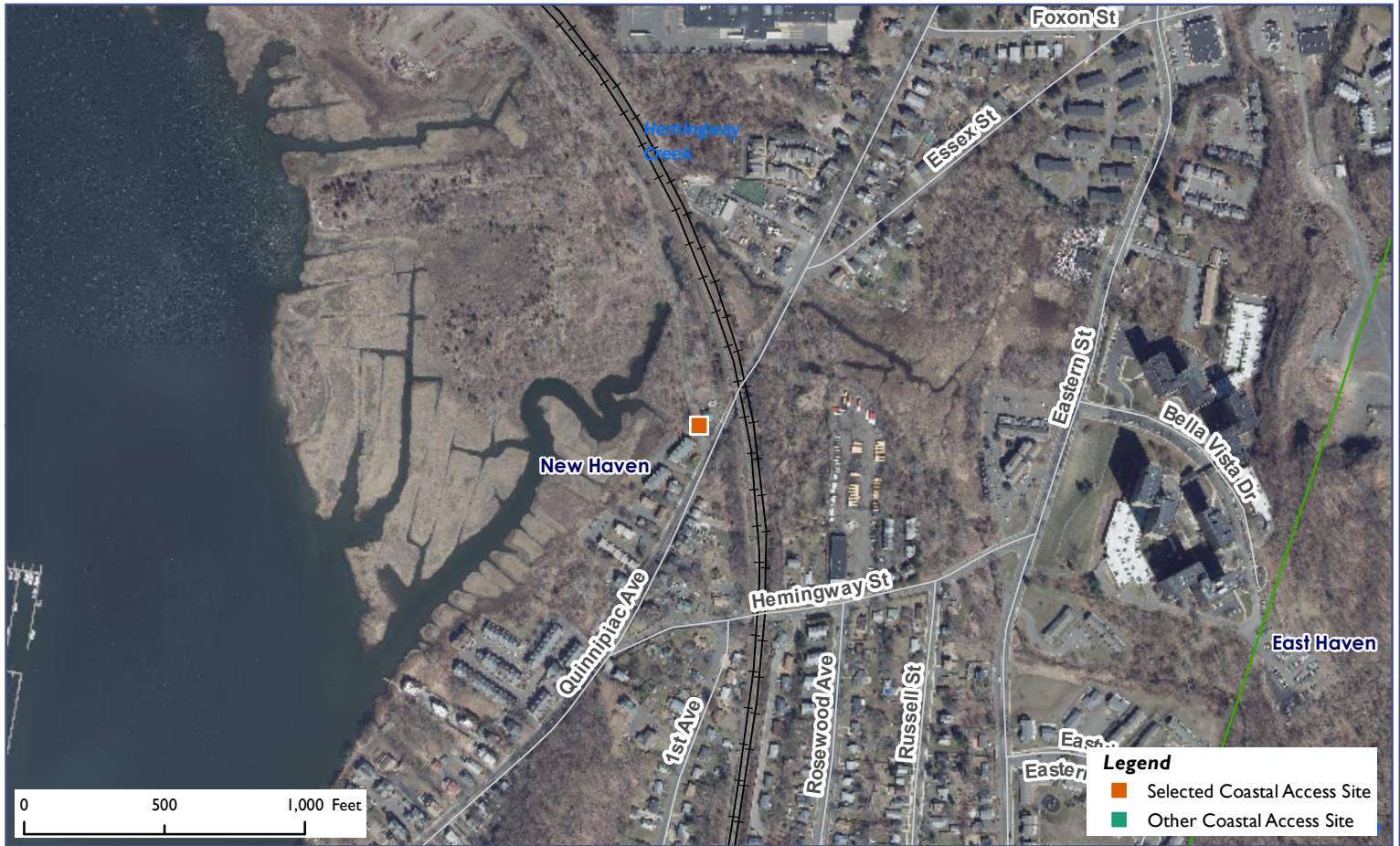


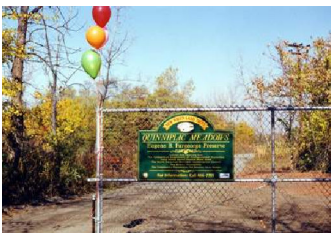
# Connecticut Coastal Access Guide

Quinnipiac Meadows

Quinnipiac Avenue New Haven, CT 06513



**Site Description:** At Quinnipiac Meadows, enter the main pedestrian path by passing between a chain link gate and a neighbor's Jersey barrier-based fence. A sign on the entrance gate reminds the visitor that this site is a nature preserve and to enjoy it with respect for resident and migrating wildlife. Extensive tidal wetlands and creeks along the pedestrian path offer glimpses of the water through the site's dense vegetative cover. Educational signage is provided along the way describing the history of the site itself as well as the preservation efforts currently underway. A popular activity here is the opportunity to walk the meadows observing birds inhabiting one of New Haven's premier estuarine wildlife areas.



Activities			
	<b>YES</b>		<b>NO</b>
	<b>NO</b>		<b>NO</b>
	<b>NO</b>		<b>NO</b>
	<b>NO</b>		<b>NO</b>
	<b>YES</b>		<b>NO</b>
	<b>NO</b>		
Facilities			
	<b>NO</b>		<b>NO</b>
	<b>NO</b>		<b>NO</b>
	<b>NO</b>		<b>NO</b>
	<b>NO</b>		<b>NO</b>
	<b>NO</b>		<b>NO</b>
Environmental Setting			
	<b>NO</b>		<b>NO</b>
	<b>NO</b>		<b>NO</b>
	<b>YES</b>		<b>NO</b>
	<b>NO</b>		<b>YES</b>
	<b>YES</b>		<b>NO</b>
<b>Parking:</b> Parking Lot		<b>Fee:</b> NO	



CONNECTICUT DEPARTMENT OF  
ENERGY & ENVIRONMENTAL PROTECTION  
79 ELM STREET  
HARTFORD, CT 06106-5127

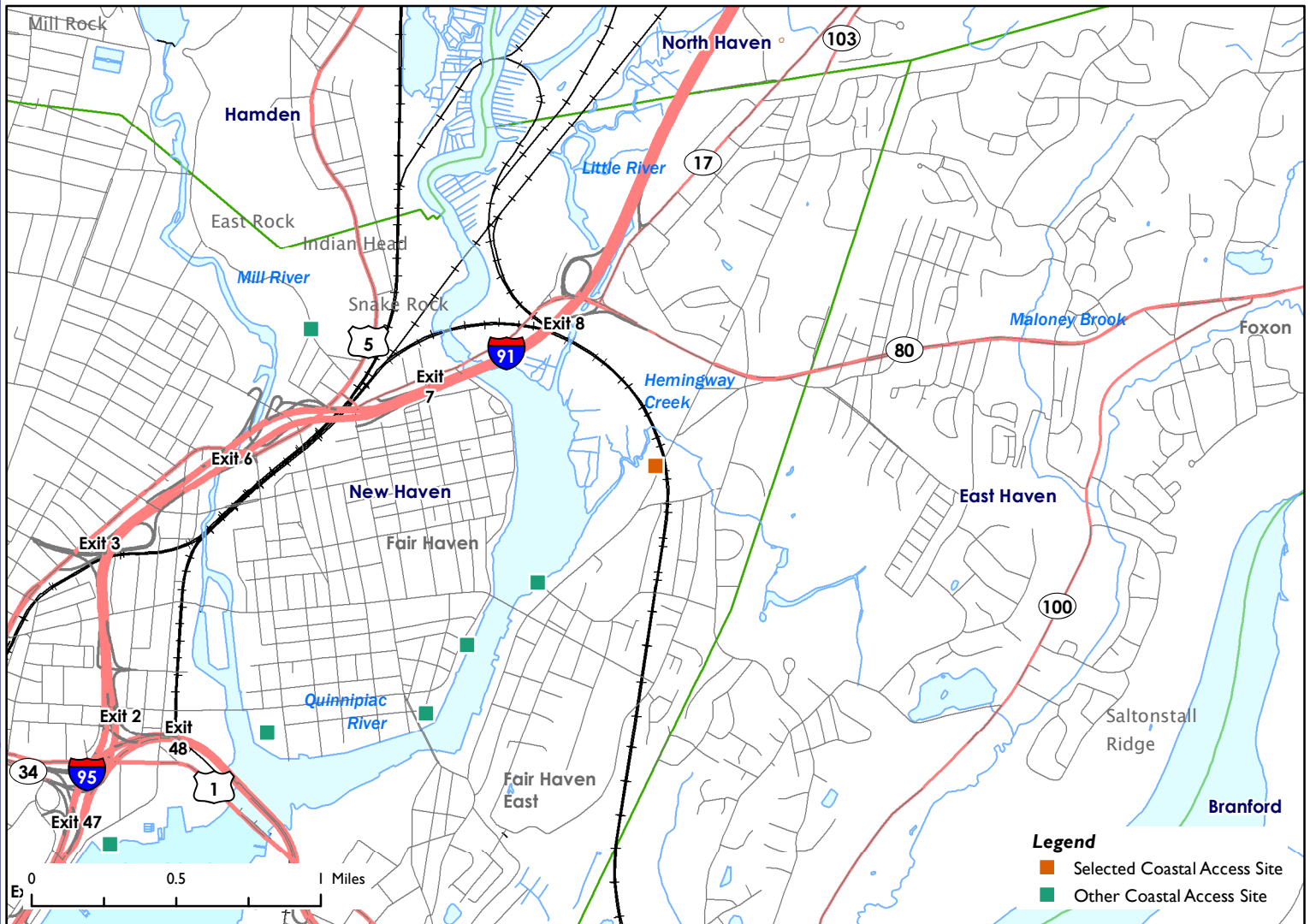
**EXPLORE CONNECTICUT'S SHORE**



# Connecticut Coastal Access Guide

Quinnipiac Meadows

Quinnipiac Avenue New Haven, CT 06513



Latitude: 41.315746 Longitude: -72.877751

## Directions:

From the East: I-95 South to Exit 51. Continue straight at the end of the exit ramp to US Route 1/North Frontage Road and proceed .8 miles. Then turn right onto Townsend Avenue, and follow .2 miles. Bear slightly to the right onto Quinnipiac Avenue and continue 1.8 miles. Quinnipiac Meadows is located on the left almost immediately before the Railroad Bridge. The gated entrance to the Meadows assures that the visitor has arrived in the right place. The left (south/southwest) side of the entrance to Quinnipiac Meadows is the location for the established pedestrian access way between the gate pole and a neighbor's Jersey barrier-based chain-link fence.

From the West: I-95 North to Exit 50. Merge onto Main Street by continuing straight for a short distance after the first intersection toward the end of the exit ramp. At the intersection of Route 337/Townsend Avenue, turn left onto Townsend Avenue and proceed .3 miles. Then bear slightly to the right onto Quinnipiac Avenue and proceed 1.8 miles. Quinnipiac Meadows is located on the left almost immediately before the Railroad Bridge. The gated entrance to the Meadows assures that the visitor has arrived in the right place. The left (south/southwest) side of the entrance to Quinnipiac Meadows is the location for the established pedestrian access way between the gate pole and a neighbor's Jersey barrier-based chain-link fence.



## Additional Site Information:

New Haven Land Trust  
205 Whitney Avenue, 1st Floor  
New Haven, CT 06511  
<http://www.newhavenlandtrust.org>

## General Questions or Comments:

Land and Water Resources Division  
Phone: (860) 424-3019  
Email: [coastal.access@ct.gov](mailto:coastal.access@ct.gov)  
[www.ct.gov/deep](http://www.ct.gov/deep)



CONNECTICUT DEPARTMENT OF  
ENERGY & ENVIRONMENTAL PROTECTION  
79 ELM STREET  
HARTFORD, CT 06106-5127

**EXPLORE CONNECTICUT'S SHORE**



Updated: May 2022