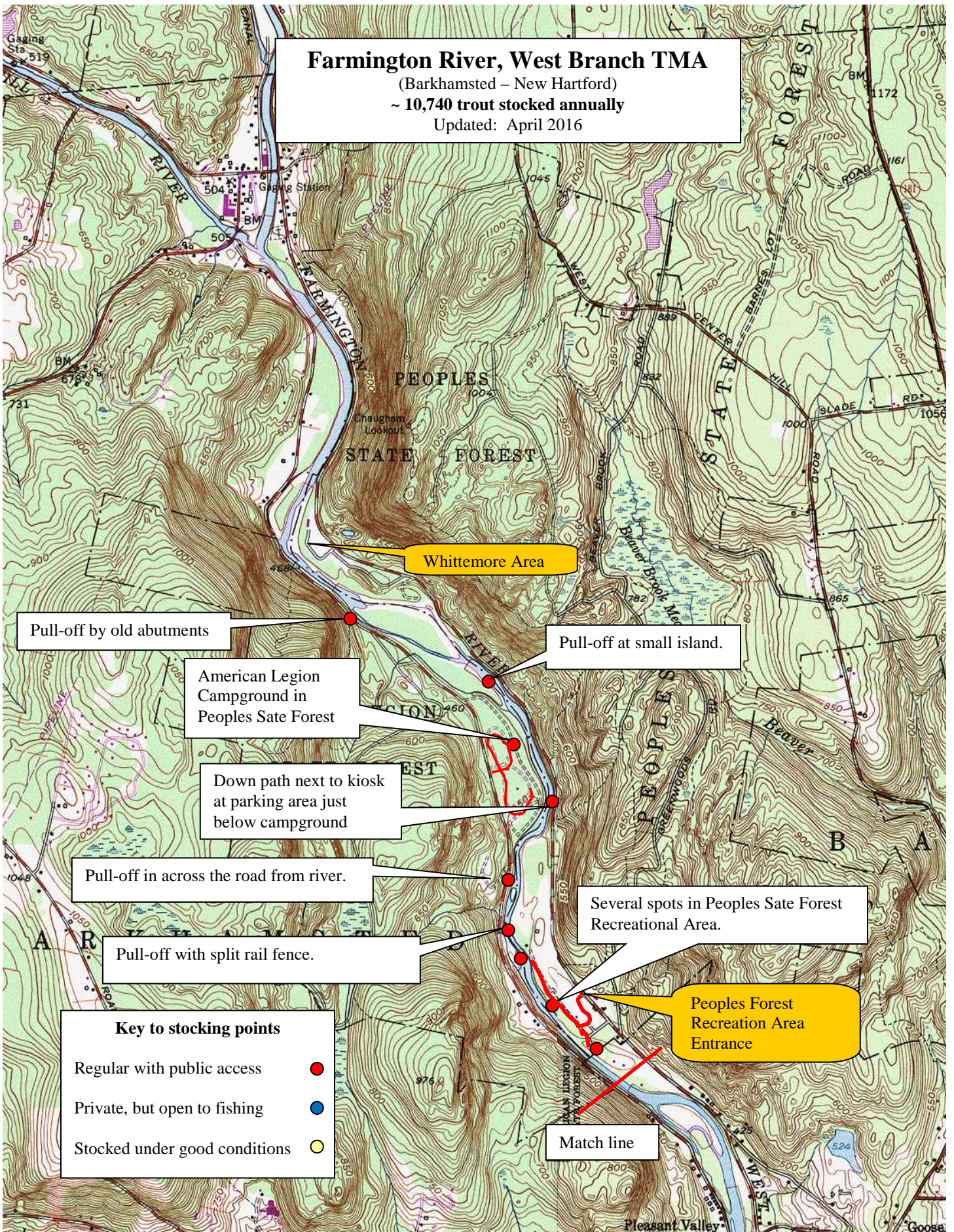


Farmington River, West Branch TMA

(Barkhamsted – New Hartford)
~ 10,740 trout stocked annually
Updated: April 2016



Pull-off by old abutments

American Legion
Campground in
Peoples State Forest

Down path next to kiosk
at parking area just
below campground

Pull-off in across the road from river.

Pull-off with split rail fence.

Pull-off at small island.

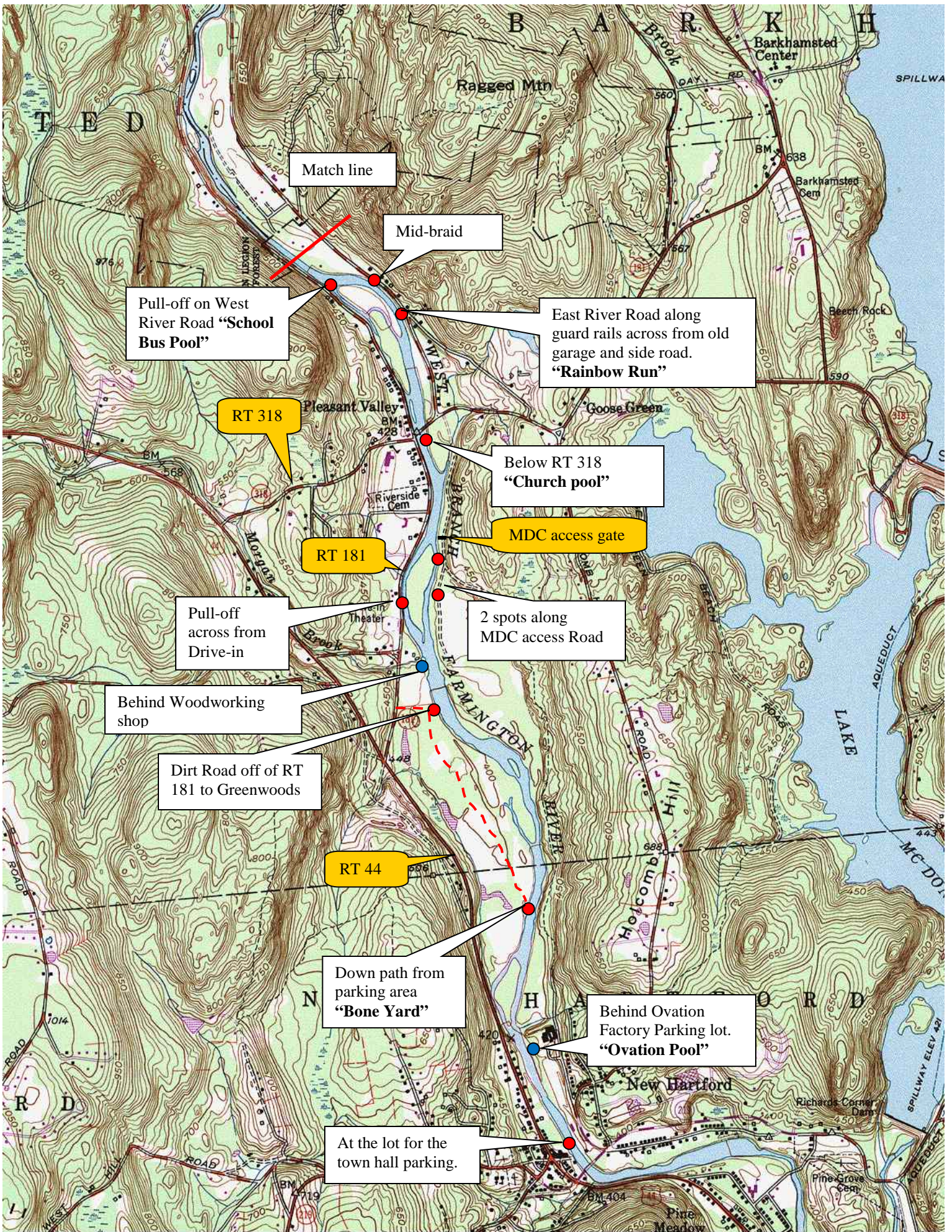
Several spots in Peoples State Forest
Recreational Area.

Peoples Forest
Recreation Area
Entrance

Key to stocking points

- Regular with public access ●
- Private, but open to fishing ●
- Stocked under good conditions ○

Match line



Match line

Mid-braid

Pull-off on West River Road "School Bus Pool"

East River Road along guard rails across from old garage and side road. "Rainbow Run"

RT 318

Below RT 318 "Church pool"

RT 181

MDC access gate

Pull-off across from Drive-in

2 spots along MDC access Road

Behind Woodworking shop

Dirt Road off of RT 181 to Greenwoods

RT 44

Down path from parking area "Bone Yard"

Behind Ovation Factory Parking lot. "Ovation Pool"

At the lot for the town hall parking.