

Energy Efficiency Board 2018 Programs and Operations Report

MARCH 1, 2019



"Energy efficiency is important in all our future upgrades. As a small business, there are many ways we can save on overhead costs so they don't affect our product pricing for customers."



Dan Puffer, Black Forest Pastry Shop



"We were provided with all the information we needed to make the decision to move forward with additional improvements."

Jason Edwards, Manchester Homeowner



"We're an efficiency motivated school system and try to save money for the district. And it's not just energy efficient, it also improves the quality of the school – safety, air quality, heating and noise levels – it's great."



Steve Carroll, Town of Montville Board of Education



"The capital improvement projects we've done have given us the ability to put our financial efforts into other aspects of our facilities, and it really has kept us quite competitive in our industry."

Taylor Bova, Bigelow Tea



"Cost savings measures like these have helped fuel our growth from 300 employees to almost 500, allowing us to meet increasing customer demands."

Robert Allen, Connecticut Spring & Stamping



Empowering you to make smart energy choices

Executive Summary



We are honored to present the 2018 Programs and Operations Report of the Connecticut Energy Efficiency Board (EEB) to the Connecticut General Assembly. You will find a summary of the considerable results achieved in 2018, the third year of the current three-year Conservation and Load Management (C&LM) Plan. The EEB continues to focus on the energy needs of Connecticut's residents, businesses, and municipalities by ensuring high quality energy efficiency programs.

While the energy-reduction results documented in this report are impressive, they also reflect the damaging impact of a budget diminished by a major sweep of the electric ratepayer monies imposed by State legislators in late 2017. While \$10 million was restored in 2018, the remaining raid of \$117 million earmarked for energy efficiency services in fiscal years 2018 and 2019 resulted in considerable losses to economic development, carbon reduction and the environmental health of Connecticut.

As you read this report, the electric and gas utilities are implementing a new three-year plan (2019-2021) that is an ambitious roadmap for a cleaner, healthier and energy-efficient Connecticut. The plan includes strategies to accelerate marketplace adoption of low carbon heating technologies, provides tailored solutions for underserved customers and market sectors, facilitates peak load reduction and grid modernization, and supports a green and sustainable workforce.

William E. Dornbos
Acadia Center and Chairperson
of the Connecticut Energy
Efficiency Board

Amanda Fargo-Johnson
CT RC&D / CT Farm Energy Program
and Vice-Chairperson of the
Connecticut Energy Efficiency Board

Energy Efficiency Board Programs and Operations

PROMOTING ECONOMIC DEVELOPMENT, ENVIRONMENTAL BENEFITS, AND ENERGY SECURITY THROUGH THE EFFICIENT USE OF ENERGY.

Energy efficiency programs and services are marketed under the statewide brand, Energize ConnecticutSM, and provided by Eversource, United Illuminating, Connecticut Natural Gas and Southern Connecticut Gas.

The EEB's 15 appointed members are drawn from private and public entities and represent a cross section of energy consumers including residents, business, non-profits, communities and municipalities. The EEB is assisted by consultants who are experts in their respective fields. The EEB assists and advises the utilities throughout the year via participation in various committees and as a whole. The EEB also collaborates and cooperates with the energy efficiency programs of the Connecticut Municipal Electric Energy Cooperative (www.CMEEC.com) and the Wallingford Electric Division (www.town.wallingford.ct.us/Content/Electric_Division.asp). Please visit their websites for more information.

AWARDS



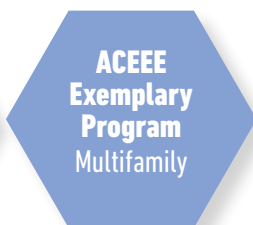
The American Council
for an Energy-Efficient
Economy



Environmental
Protection Agency



**ACEEE
Exemplary
Program**
Small Business
Energy
Advantage



**ACEEE
Exemplary
Program**
Multifamily



Association of Energy
Service Professionals

Delivering Economic Benefits to Connecticut

ENERGY EFFICIENCY AND RENEWABLE PROGRAMS AND SERVICES

Together, Eversource, UI, SCG, CNG, the Energy Efficiency Board and the Connecticut Green Bank make Connecticut a better place to live and work.



EVERY \$1.00 COLLECTED RESULTS IN AN ADDITIONAL \$5.60 OF CLEAN ENERGY INVESTMENT

An investment by residential, business and municipal energy customers that improves the quality of life in Connecticut.²



38,000 JOBS

Clean energy investment supports Connecticut jobs in HVAC, electrical, manufacturing, insulation, weatherization and solar industries.

34,700 from energy efficiency
3,300 from renewables³



\$5.4 BILLION INCREASE TO THE GROSS STATE PRODUCT

Generated by the Conservation and Load Management Plan (Eversource, UI, SCG, CNG) and the Comprehensive Plan (Connecticut Green Bank).⁴



656,000 CUSTOMERS BENEFITED

Annually, 256,000 through programs for families, businesses, municipalities and other institutions ranging from energy assessments, efficient appliances, weatherization, solar PV installations, efficient lighting, heating and cooling, process improvements, thermal insulation, education and financing. 400,000 through retail lighting product incentives.



ENERGY SAVINGS EQUIVALENT TO A 130 MW POWER PLANT

In 2018, clean energy in Connecticut resulted in energy savings equal to one 130 MW power plant. This is enough energy to power approximately 46,000 homes for a year.



\$5.0 MILLION IN PUBLIC HEALTH COSTS SAVED

Clean energy reduces emissions and pollutants resulting in healthier and cleaner air.⁵



\$62 MILLION IN CT TAX REVENUES

Generated from individual, corporate, and sales tax revenues per year as a result of clean energy programs and services.

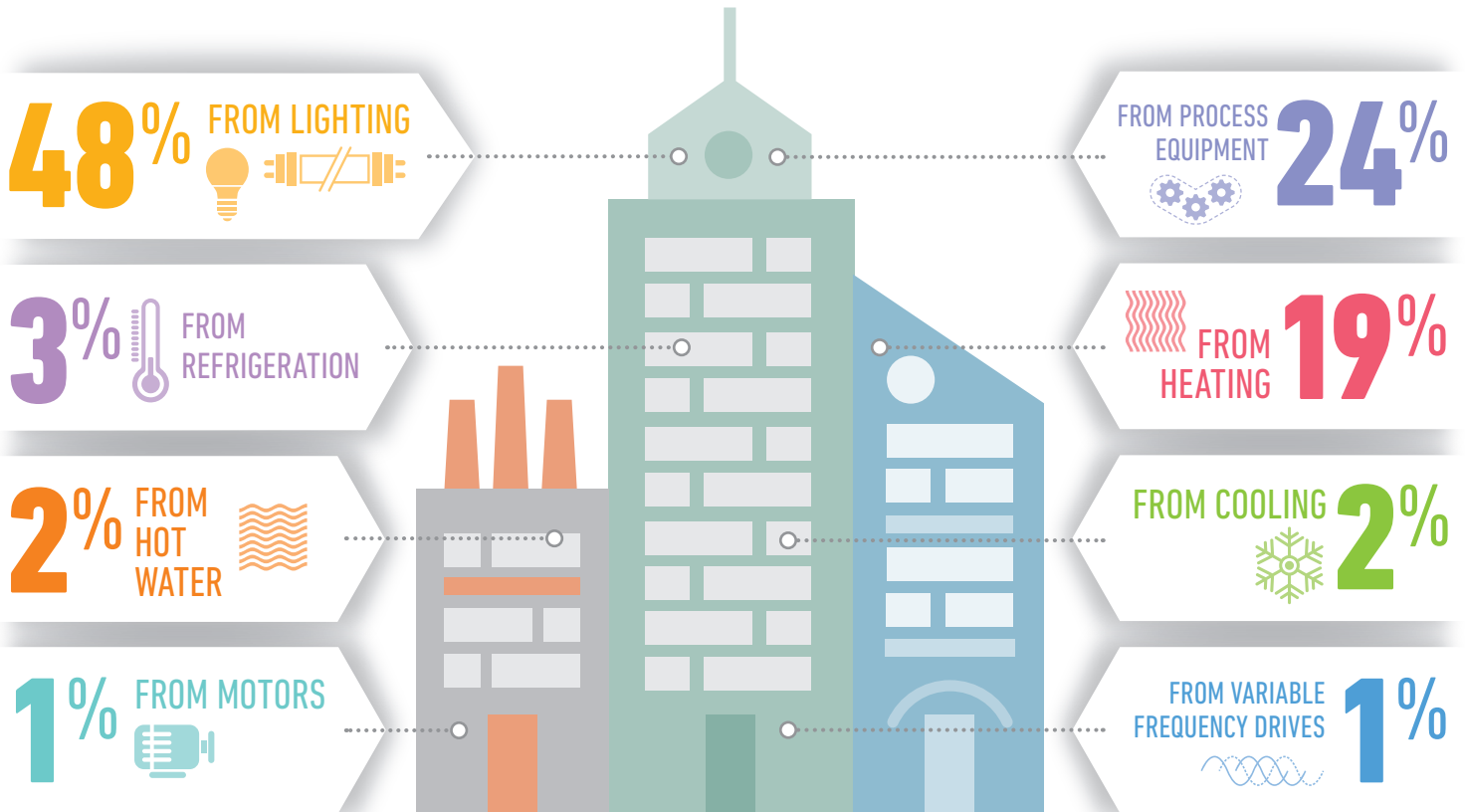
The numbers presented are from the implementation of the C&LM plan administered by Eversource, UI, CNG and SCG and the Comprehensive Plan administered by the CT Green Bank.

- 1 All numbers in this document reflect annual savings and benefits
- 2 Calculated from actual Conservation and Load Management and CT Green Bank reporting in 2018
- 3 U.S. Energy Employment Report, Department of Energy, 2018
- 4 2009 Environment Northeast (ENE) "Energy Efficiency in Connecticut: Engine of Economic Growth". (Based on updated formula data.)
- 5 EPA Avoided Emissions and generation Tool (AVERT) 2018 and EPA Co-Benefits Risk Assessment Model

EnergizeCT.com or 877-WISE-USE

\$31.1 MILLION SAVED*

THIS IS HOW WE DID IT IN 2018



* Based on annual savings expected in Connecticut.

A SUSTAINABLE FUTURE

Sustainability is no longer an objective just for Connecticut's largest energy users.

Municipalities, non-profits and businesses of all sizes are aware, to varying degrees, that to stay healthy and competitive in the 21st century requires a different way of doing business and a more comprehensive "toolbox".

The new 2019-2021 Plan empowers these organizations with energy demand reduction strategies that include peak load shifting, energy storage, and advanced automation solutions that mitigate human inefficiencies. Segment-specific approaches, low carbon heating technology, contractor network support, and market transformation via direct incentives at the point of purchase are all critical elements and fundamental requirements for a thriving and sustainable Connecticut.

RESIDENTIAL ENERGY SOLUTIONS

\$26 MILLION

SAVED*
THIS IS HOW WE DID IT IN 2018

30% FROM LIGHTING

59,566 HOMES WEATHERIZED

3.8 MILLION LED BULBS SOLD AT RETAIL

2% OTHER MEASURES

FROM HEATING & COOLING including 15,086 systems installed **39%**

FROM INSULATION / ENVELOPE including 1,607 rebates **22%**

FROM HOT WATER including 5,306 units installed **6%**

FROM REFRIGERATION including 364 rebates **1%**

* Based on annual savings expected in Connecticut.

READY FOR 2019 AND BEYOND

Residential energy efficiency programs and services have changed significantly over the past 20 years and will continue to evolve in the new 2019-2021 Plan.

Lighting accounted for 55 percent of residential energy savings in 2017 and only 30 percent in 2018. The 2019-2021 Plan reflects that shift with a focus on advanced energy-efficient HVAC solutions, home performance, smart connected devices, online retail platforms, and active demand reduction strategies – measures designed to save customers money while reducing greenhouse gas emissions in the region. This new, flexible, evidence-based strategy can evolve rapidly to meet customer demands and emerging technologies, while taking into account federal regulations and state and national energy code modifications.

Activities in 2018 Produced Substantial Economic and Environmental Benefits for Residents, Businesses and Municipalities



	Annual Savings (millions)	Lifetime Savings (millions)	Number of Projects & Rebates	Annual CO ₂ Emissions Reduced (tons)	Annual MMBTUs Reduced (thousands)
Home Energy Solutions	\$ 9.54	\$ 146.99	59,656	27,673	368,955
Home Energy Solutions — Income Eligible	\$ 5.72	\$ 89.56	36,063	16,640	222,853
Retail Products	\$ 5.40	\$ 32.76	402,944	9,892	95,570
Residential New Construction	\$ 0.96	\$ 19.35	3,633	2,827	40,887
Residential Behavior	\$ 4.12	\$ 10.65	149,372	8,043	79,842
Small Business Energy Advantage	\$ 6.11	\$ 75.76	1,436	12,914	132,027
Existing Buildings (Mid- and Large-Sized Customers)	\$ 20.94	\$ 234.78	2,814	61,804	728,118
New Construction/Equipment (Business)	\$ 4.08	\$ 63.77	893	12,227	146,782
Total	\$ 56.88	\$ 673.62	656,811	152,021	1,815,033

PROTECTING CONNECTICUT'S ENVIRONMENT

	Estimated Annual Savings 2018			Estimated Lifetime Savings 2018		
	Electric	Gas	Fuel Oil and Propane	Electric	Gas	Fuel Oil and Propane
Air Emissions						
SO _x Tons	12	0	0	128	3	3
NO _x Tons	22	32	11	241	471	221
CO ₂ Tons	97,845	40,821	13,355	1,049,505	600,586	263,824



Photos courtesy of DEEP

2018 RESIDENTIAL PROGRAM SAVINGS



SAVINGS:
Annual: **\$25.7 Million**
Lifetime: **\$299.3 Million**



PROJECTS AND REBATES:
651,668



CO₂ EMISSIONS REDUCED:
Annual: **65,075 Tons**
Lifetime: **0.9 Million Tons**



ENERGY SAVINGS
kWh = Electricity
Annual: **94.0 Million**
Lifetime: **0.7 Billion**
CCF = Natural Gas
Annual: **3.1 Million**
Lifetime: **62.9 Million**
Gallons = Fuel Oil and Propane
Annual: **1.3 Million**
Lifetime: **26.1 Million**

2018 COMMERCIAL & INDUSTRIAL PROGRAM SAVINGS



SAVINGS:
Annual: **\$31.1 Million**
Lifetime: **\$374.3 Million**



PROJECTS AND REBATES:
5,143



CO₂ EMISSIONS REDUCED:
Annual: **86,946 Tons**
Lifetime: **1.0 Million Tons**



ENERGY SAVINGS
kWh = Electricity
Annual: **183.1 Million**
Lifetime: **2.2 Billion**
CCF = Natural Gas
Annual: **3.7 Million**
Lifetime: **37.2 Million**

COMBINED 2018 RESIDENTIAL, COMMERCIAL & INDUSTRIAL PROGRAM SAVINGS



SAVINGS:
Annual: **\$56.8 Million**
Lifetime: **\$673.6 Million**



PROJECTS AND REBATES:
656,811



AIR EMISSIONS REDUCED:
CO₂: **1.9 Million Tons** (Lifetime)
SO_x: **134 Tons** (Lifetime)
NO_x: **932 Tons** (Lifetime)



ENERGY SAVINGS
kWh = Electricity
Annual: **277.1 Million**
Lifetime: **2.9 Billion**
CCF = Natural Gas
Annual: **6.8 Million**
Lifetime: **100.1 Million**
Gallons = Fuel Oil and Propane
Annual: **1.3 Million**
Lifetime: **26.1 Million**

DEMONSTRATING ECONOMIC BENEFITS THROUGHOUT CONNECTICUT

This list includes energy efficiency and conservation benefits provided to residential, commercial and industrial customers of Eversource, UI, CNG, SCG.

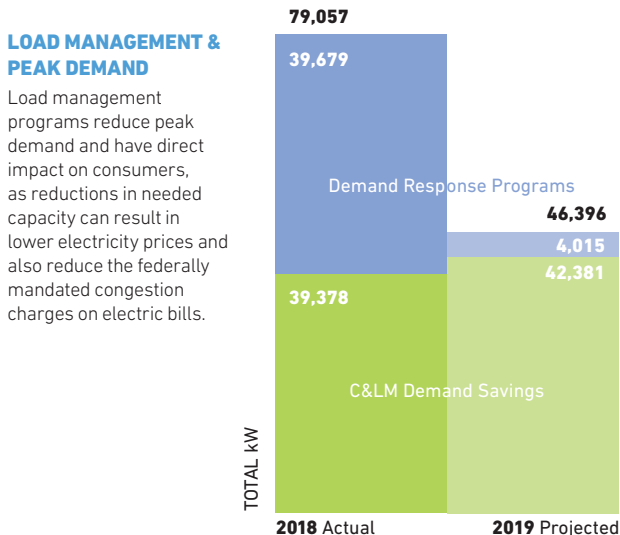
Town	Energy Incentives	Annual kWh Saved	Lifetime kWh Saved	Peak Demand kW Saved	Annual CCF Saved	Lifetime CCF Saved	Annual Gallons (Oil & Propane) Saved	Lifetime Gallons (Oil & Propane) Saved	Annual Dollars Saved	Lifetime Dollars Saved	Annual CO ₂ (Tons) Saved
Andover	\$ 27,935	42,916	590,500	4	—	—	2,109	45,182	\$ 14,123	\$ 246,200	35
Ansonia	\$ 544,468	705,911	8,179,020	88	49,244	1,021,873	4,977	108,377	\$ 175,830	\$ 2,646,961	600
Ashford	\$ 26,339	71,563	913,352	8	—	—	752	14,808	\$ 14,649	\$ 202,873	32
Avon	\$ 520,668	1,023,273	10,789,203	183	39,420	650,168	6,353	125,099	\$ 226,524	\$ 2,811,927	662
Barkhamsted	\$ 34,127	40,986	459,363	6	188	3,752	2,364	50,367	\$ 14,765	\$ 243,480	38
Beacon Falls	\$ 116,870	273,204	3,198,198	47	2,807	67,156	3,316	70,208	\$ 59,633	\$ 830,004	146
Berlin	\$ 2,666,446	17,910,030	134,421,823	3,262	17,302	338,230	10,882	150,003	\$ 3,111,682	\$ 23,636,739	6,540
Bethany	\$ 50,057	97,174	1,353,990	27	—	—	3,969	83,564	\$ 29,282	\$ 496,355	70
Bethel	\$ 280,251	649,446	7,898,240	81	9,134	169,436	4,761	97,305	\$ 133,534	\$ 1,805,285	329
Bethlehem	\$ 28,141	41,136	377,222	13	—	—	2,051	41,042	\$ 13,687	\$ 197,305	35
Bloomfield	\$ 2,292,349	6,756,358	89,474,276	1,054	121,993	1,428,187	13,351	286,692	\$ 1,294,849	\$ 17,408,291	3,260
Bolton	\$ 115,582	173,672	2,204,000	33	9,098	148,167	2,927	63,650	\$ 46,363	\$ 712,560	146
Bozrah	\$ —	—	—	—	—	—	—	—	\$ —	\$ —	—
Branford	\$ 936,474	1,565,804	17,475,638	271	77,866	1,045,343	5,197	106,044	\$ 345,660	\$ 4,232,929	1,072
Bridgeport	\$ 4,993,174	5,142,976	57,042,278	749	432,682	8,058,964	35,889	809,479	\$ 1,337,368	\$ 19,448,639	4,808
Bridgewater	\$ 31,730	58,119	727,430	18	—	—	1,189	23,586	\$ 13,829	\$ 200,813	33
Bristol	\$ 2,952,764	6,077,875	70,469,614	789	153,171	2,194,373	22,269	442,282	\$ 1,231,018	\$ 15,324,583	3,277
Brookfield	\$ 494,472	1,943,631	17,335,471	290	3,540	86,935	5,827	116,043	\$ 354,106	\$ 3,401,701	767
Brooklyn	\$ 91,947	396,871	4,321,009	38	502	8,229	2,854	59,334	\$ 77,430	\$ 932,132	170
Burlington	\$ 85,934	161,690	2,184,876	39	1,820	42,542	3,595	71,890	\$ 40,428	\$ 636,127	99
Canaan	\$ 458,057	778,373	11,016,207	140	—	—	525	11,267	\$ 134,838	\$ 1,910,076	281
Canterbury	\$ 80,510	145,711	2,190,099	16	—	—	3,490	65,864	\$ 36,320	\$ 588,073	87
Canton	\$ 215,680	399,013	4,315,063	61	7,552	124,443	6,553	139,774	\$ 95,330	\$ 1,294,304	250
Chaplin	\$ 55,778	140,306	1,806,769	29	—	—	615	13,552	\$ 25,906	\$ 349,076	54
Cheshire	\$ 480,333	746,951	8,096,309	157	9,893	197,826	24,565	513,982	\$ 214,614	\$ 3,202,996	558
Chester	\$ 56,793	178,547	2,411,168	7	—	—	1,325	26,494	\$ 34,775	\$ 494,887	75
Clinton	\$ 238,678	418,008	4,989,386	59	5,668	120,151	5,437	113,233	\$ 93,256	\$ 1,313,681	231
Colchester	\$ 323,312	666,571	8,115,896	124	—	—	15,909	351,059	\$ 163,459	\$ 2,468,407	358
Colebrook	\$ 4,267	9,180	131,417	2	—	—	182	3,022	\$ 2,161	\$ 32,191	5
Columbia	\$ 75,896	227,830	2,803,160	41	—	—	1,944	38,238	\$ 45,294	\$ 601,468	100
Cornwall	\$ 11,097	13,435	139,680	1	—	—	1,050	20,668	\$ 5,735	\$ 91,734	16
Coventry	\$ 150,239	355,574	4,282,641	31	933	18,654	5,003	105,502	\$ 77,262	\$ 1,075,391	173
Cromwell	\$ 190,120	491,732	4,675,832	65	9,758	196,719	4,371	83,651	\$ 105,571	\$ 1,232,381	270
Danbury	\$ 1,779,276	4,569,145	48,853,644	849	89,239	1,268,438	46,962	897,212	\$ 1,005,515	\$ 12,369,139	2,646
Darien	\$ 374,679	859,869	9,846,780	169	5,561	99,712	10,639	221,566	\$ 185,375	\$ 2,466,555	434
Deep River	\$ 114,487	384,188	4,965,021	50	1,459	35,461	983	20,676	\$ 70,062	\$ 943,213	155
Derby	\$ 290,790	598,495	6,850,113	85	17,295	325,052	1,974	39,840	\$ 122,335	\$ 1,579,712	335
Durham	\$ 120,479	229,746	2,492,579	19	—	—	3,756	74,505	\$ 51,161	\$ 658,938	113
East Granby	\$ 358,585	834,127	10,611,424	142	5,206	103,643	2,254	44,947	\$ 154,037	\$ 2,040,995	348
East Haddam	\$ 94,989	192,700	2,407,668	29	—	—	4,645	92,916	\$ 48,044	\$ 711,985	115
East Hampton	\$ 254,045	624,814	7,670,087	99	3,495	63,468	6,874	139,376	\$ 131,456	\$ 1,803,032	303
East Hartford	\$ 2,138,189	4,507,009	46,497,234	452	216,628	3,474,920	16,911	375,230	\$ 996,536	\$ 12,198,046	3,079
East Haven	\$ 872,788	1,738,801	20,590,649	199	146,657	1,345,770	9,114	190,812	\$ 442,165	\$ 5,307,432	1,590
East Lyme	\$ 329,981	792,837	10,190,584	107	427	8,549	13,406	286,464	\$ 177,874	\$ 2,633,632	390
East Windsor	\$ 506,377	1,130,820	12,575,422	170	52,057	714,115	4,284	86,550	\$ 247,898	\$ 3,042,038	751
Eastford	\$ 34,822	93,520	1,429,395	5	—	—	1,108	24,991	\$ 19,455	\$ 320,895	42
Easton	\$ 84,355	152,759	1,538,347	22	2,759	54,637	4,539	95,071	\$ 42,697	\$ 610,800	110
Ellington	\$ 512,942	1,421,494	20,153,919	364	22,929	482,404	6,887	146,044	\$ 282,796	\$ 4,309,281	698
Enfield	\$ 3,131,667	6,252,306	66,384,691	883	160,610	2,082,844	35,434	561,105	\$ 1,311,815	\$ 14,964,009	3,554
Essex	\$ 210,853	1,068,415	14,293,028	203	2,525	38,877	1,502	27,114	\$ 189,471	\$ 2,550,554	406
Fairfield	\$ 1,763,607	2,552,906	31,722,320	480	99,886	1,882,233	13,255	282,475	\$ 558,128	\$ 7,967,860	1,637
Farmington	\$ 968,206	2,061,524	25,994,606	435	61,504	975,677	11,271	225,474	\$ 437,454	\$ 6,010,723	1,212
Franklin	\$ 49,139	73,282	970,429	13	—	—	846	17,266	\$ 15,311	\$ 221,942	35

Town	Energy Incentives	Annual kWh Saved	Lifetime kWh Saved	Peak Demand kW Saved	Annual CCF Saved	Lifetime CCF Saved	Annual Gallons (Oil & Propane) Saved	Lifetime Gallons (Oil & Propane) Saved	Annual Dollars Saved	Lifetime Dollars Saved	Annual CO ₂ (Tons) Saved
Glastonbury	\$ 840,411	1,584,869	13,961,559	264	46,622	909,222	13,668	292,253	\$ 351,115	\$ 4,102,177	962
Goshen	\$ 41,974	66,418	820,692	17	88	1,758	2,282	48,742	\$ 18,591	\$ 293,986	43
Granby	\$ 320,110	569,524	7,332,316	109	9,557	227,063	6,587	134,239	\$ 126,267	\$ 1,881,397	324
Greenwich	\$ 916,780	1,383,931	17,092,064	270	64,979	1,217,904	6,363	132,521	\$ 308,048	\$ 4,401,553	939
Griswold	\$ 95,589	257,205	3,039,235	54	—	—	1,849	38,455	\$ 49,910	\$ 640,370	108
Groton	\$ 410,217	186,541	1,831,983	27	189,733	1,171,096	3,880	74,158	\$ 192,940	\$ 1,577,673	1,239
Guilford	\$ 354,194	788,389	9,085,824	114	10,114	203,156	9,009	180,631	\$ 171,631	\$ 2,302,147	423
Haddam	\$ 78,170	172,110	2,040,584	36	—	—	5,115	111,551	\$ 45,422	\$ 693,929	102
Hamden	\$ 1,853,528	3,423,919	39,157,691	468	109,884	2,058,151	24,347	538,813	\$ 752,239	\$ 10,247,748	2,137
Hampton	\$ 18,032	28,053	390,831	15	—	—	522	9,098	\$ 6,434	\$ 94,950	14
Hartford	\$ 7,907,217	12,933,530	143,624,742	1,590	617,757	8,719,946	22,968	500,194	\$ 2,771,819	\$ 33,724,534	8,527
Hartland	\$ 31,013	73,487	920,768	16	—	—	294	5,505	\$ 13,534	\$ 174,718	29
Harwinton	\$ 90,908	206,549	2,486,137	36	—	—	3,085	62,471	\$ 45,213	\$ 623,294	102
Hebron	\$ 90,652	167,411	2,127,212	25	1,891	37,820	3,782	78,829	\$ 41,892	\$ 639,723	100
Kent	\$ 69,813	114,695	1,544,743	15	—	—	1,042	20,124	\$ 22,995	\$ 327,988	51
Killingly	\$ 2,025,812	10,823,681	141,461,436	275	12,769	159,544	7,110	139,149	\$ 1,883,691	\$ 24,636,319	3,966
Killingworth	\$ 43,968	75,537	917,065	11	—	—	2,842	55,355	\$ 22,001	\$ 332,985	53
Lebanon	\$ 44,120	98,629	1,391,812	8	—	—	2,188	43,864	\$ 23,922	\$ 378,496	56
Ledyard	\$ 877,934	4,022,260	52,166,046	264	741	13,280	5,044	105,229	\$ 704,807	\$ 9,222,392	1,476
Lisbon	\$ 138,658	704,213	6,405,156	101	—	—	2,563	38,746	\$ 128,605	\$ 1,213,320	272
Litchfield	\$ 204,751	555,741	6,976,241	150	270	5,399	5,998	126,764	\$ 114,544	\$ 1,598,413	255
Lyme	\$ 26,832	57,213	889,191	6	—	—	868	17,709	\$ 12,543	\$ 207,268	28
Madison	\$ 311,067	663,365	8,222,082	84	9,715	194,328	6,645	135,963	\$ 142,101	\$ 1,998,557	350
Manchester	\$ 1,663,848	3,590,002	35,131,219	561	74,453	1,383,481	46,939	766,072	\$ 826,860	\$ 9,713,895	2,219
Mansfield	\$ 680,368	835,212	10,115,000	109	157,059	994,408	5,585	114,633	\$ 283,918	\$ 2,962,023	1,291
Marlborough	\$ 37,743	68,228	861,341	8	—	—	2,750	53,495	\$ 20,593	\$ 320,328	51
Meriden	\$ 2,392,979	4,771,540	58,005,813	540	86,453	1,450,719	32,941	571,644	\$ 992,326	\$ 13,020,058	2,560
Middlebury	\$ 130,597	186,965	2,262,146	35	8,178	147,419	3,612	71,250	\$ 50,085	\$ 745,145	151
Middlefield	\$ 92,185	144,796	1,499,168	21	197	3,948	3,666	75,408	\$ 36,900	\$ 505,278	90
Middletown	\$ 3,641,799	7,893,398	96,991,551	1,111	176,566	2,438,182	19,438	379,612	\$ 1,551,985	\$ 19,875,404	4,053
Milford	\$ 1,890,733	3,830,327	46,435,224	498	85,911	1,639,152	12,817	272,891	\$ 764,126	\$ 10,222,341	1,999
Monroe	\$ 343,894	879,987	10,199,493	139	10,056	207,632	11,514	250,523	\$ 195,330	\$ 2,718,561	479
Montville	\$ 573,530	1,294,239	14,501,932	164	12,000	116,782	4,744	90,317	\$ 246,064	\$ 2,860,428	575
Morris	\$ 27,206	47,844	816,412	4	—	—	1,231	24,562	\$ 12,036	\$ 215,732	27
Naugatuck	\$ 815,435	1,833,846	22,975,620	234	21,239	401,093	11,404	235,701	\$ 367,783	\$ 5,034,522	897
New Britain	\$ 2,271,030	4,307,651	42,726,487	700	179,408	2,814,047	5,960	123,334	\$ 896,963	\$ 10,141,774	2,664
New Canaan	\$ 400,037	888,716	12,127,990	164	2,830	56,081	13,068	290,485	\$ 195,425	\$ 3,025,052	441
New Fairfield	\$ 281,759	602,338	7,293,385	77	—	—	4,726	95,677	\$ 118,408	\$ 1,552,535	261
New Hartford	\$ 295,937	1,048,009	10,721,260	157	89	1,784	12,833	185,382	\$ 221,338	\$ 2,431,457	505
New Haven	\$ 3,992,011	9,504,730	125,091,575	1,212	462,556	5,781,993	13,801	299,898	\$ 2,033,425	\$ 27,330,328	6,282
New London	\$ 554,307	1,572,760	19,908,788	120	23,450	418,250	2,944	58,204	\$ 297,034	\$ 3,943,731	728
New Milford	\$ 411,112	1,440,612	14,488,348	252	3,648	36,777	11,681	252,020	\$ 287,314	\$ 3,317,770	650
Newington	\$ 820,764	2,476,299	28,573,068	436	41,981	848,692	21,468	279,169	\$ 527,089	\$ 6,522,726	1,358
Newtown	\$ 756,242	1,149,379	13,474,365	203	30,177	443,726	14,344	300,978	\$ 266,641	\$ 3,654,825	728
Norfolk	\$ 13,739	23,932	304,180	5	—	—	636	12,588	\$ 6,110	\$ 91,624	14
North Branford	\$ 193,787	287,584	3,084,437	44	20,422	253,952	5,804	123,871	\$ 84,243	\$ 1,154,380	286
North Canaan	\$ 46,316	135,346	1,660,135	13	—	—	—	—	\$ 23,144	\$ 282,223	48
North Haven	\$ 791,754	2,592,803	31,060,289	361	21,075	401,525	9,682	200,908	\$ 491,726	\$ 6,293,473	1,145
North Stonington	\$ 82,317	271,239	3,266,242	28	1,785	33,481	1,326	24,292	\$ 52,068	\$ 663,250	119
Norwalk	\$ 1,791,008	5,304,851	44,283,921	745	86,336	1,320,665	26,329	475,123	\$ 1,060,745	\$ 10,239,183	2,662
Norwich	\$ 14,338	44,842	272,337	6	357	7,136	—	—	\$ 7,948	\$ 52,559	18
Old Lyme	\$ 137,130	323,362	4,352,902	31	—	—	3,744	76,758	\$ 67,361	\$ 987,458	150
Old Saybrook	\$ 341,118	866,788	9,897,640	135	4,260	93,149	3,711	71,734	\$ 163,462	\$ 1,994,529	366
Orange	\$ 705,154	1,803,829	22,731,420	395	7,685	155,292	35,346	684,232	\$ 430,711	\$ 6,251,063	1,060
Oxford	\$ 423,006	843,384	10,234,467	185	13,988	162,904	3,589	75,244	\$ 166,742	\$ 2,125,572	416
Plainfield	\$ 187,780	600,115	8,100,759	110	3,202	57,933	2,413	45,881	\$ 112,979	\$ 1,577,873	255
Plainville	\$ 623,000	1,313,806	15,802,085	315	22,850	451,922	14,258	207,458	\$ 289,392	\$ 3,764,309	752
Plymouth	\$ 136,299	173,946	2,066,683	26	7,098	152,443	3,963	86,182	\$ 47,903	\$ 758,713	139

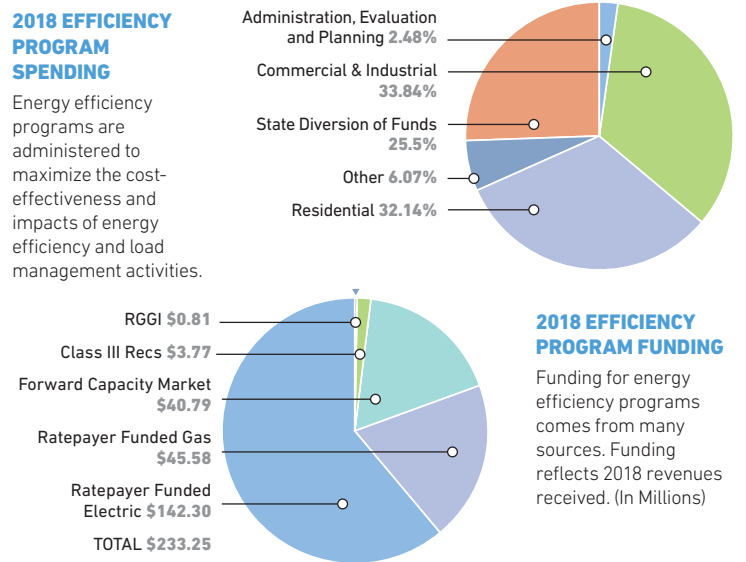
Town	Energy Incentives	Annual kWh Saved	Lifetime kWh Saved	Peak Demand kW Saved	Annual CCF Saved	Lifetime CCF Saved	Annual Gallons (Oil & Propane) Saved	Lifetime Gallons (Oil & Propane) Saved	Annual Dollars Saved	Lifetime Dollars Saved	Annual CO ₂ (Tons) Saved
Pomfret	\$ 64,408	98,366	1,397,024	15	77	1,549	3,223	65,313	\$ 27,351	\$ 450,594	67
Portland	\$ 110,756	167,005	1,856,922	28	1,833	36,634	6,219	138,735	\$ 50,469	\$ 805,055	137
Preston	\$ 608,755	1,308,914	19,253,946	167	—	—	1,461	30,203	\$ 228,606	\$ 3,372,341	477
Prospect	\$ 129,517	220,368	2,640,792	42	1,057	20,895	5,047	107,553	\$ 54,716	\$ 813,639	131
Putnam	\$ 506,821	952,323	10,862,531	150	61,425	533,304	2,568	56,287	\$ 218,988	\$ 2,489,155	725
Redding	\$ 75,184	99,728	1,137,906	20	373	7,451	4,900	104,903	\$ 33,356	\$ 543,287	88
Ridgefield	\$ 518,370	945,191	10,217,945	151	69,405	636,655	10,989	220,010	\$ 252,056	\$ 3,017,646	866
Rocky Hill	\$ 954,891	2,088,413	23,548,905	339	32,588	619,425	3,570	73,876	\$ 394,208	\$ 4,785,319	968
Roxbury	\$ 33,645	40,876	551,907	11	—	—	2,683	57,828	\$ 15,772	\$ 283,493	42
Salem	\$ 31,996	60,255	852,378	8	—	—	2,317	47,740	\$ 17,547	\$ 293,563	40
Salisbury	\$ 110,202	207,733	2,593,499	35	—	—	1,255	23,866	\$ 39,553	\$ 517,577	85
Scotland	\$ 15,414	7,744	58,984	1	—	—	874	14,759	\$ 4,219	\$ 58,945	12
Seymour	\$ 124,882	173,182	1,913,811	32	11,658	115,688	6,634	135,027	\$ 59,964	\$ 858,031	192
Sharon	\$ 30,117	62,171	750,530	12	—	—	1,300	26,513	\$ 14,665	\$ 209,957	32
Shelton	\$ 1,923,272	4,822,287	74,430,500	837	110,068	1,856,707	17,524	372,183	\$ 967,564	\$ 15,485,165	2,535
Sherman	\$ 19,826	35,575	440,430	4	—	—	1,490	28,651	\$ 10,732	\$ 164,248	24
Simsbury	\$ 635,302	726,293	8,906,483	147	62,039	922,176	9,982	193,864	\$ 205,207	\$ 2,953,316	728
Somers	\$ 247,496	687,398	8,889,835	67	291	5,791	5,267	107,447	\$ 134,733	\$ 1,862,189	295
South Windsor	\$ 967,391	2,218,243	27,226,874	362	33,529	637,969	8,138	169,938	\$ 432,206	\$ 5,744,704	1,069
Southbury	\$ 541,991	2,023,376	22,006,637	298	1,365	27,643	15,071	297,293	\$ 395,467	\$ 4,713,587	864
Southington	\$ 1,266,049	4,153,584	43,153,175	633	61,142	1,124,838	22,561	344,153	\$ 831,673	\$ 9,441,420	2,063
Sprague	\$ 24,094	35,295	563,823	2	—	—	1,669	34,765	\$ 11,479	\$ 209,525	30
Stafford	\$ 53,723	133,835	1,606,808	21	—	—	2,378	45,372	\$ 30,602	\$ 420,630	71
Stamford	\$ 3,931,819	7,102,309	82,328,443	1,178	241,811	4,023,581	14,095	284,575	\$ 1,449,722	\$ 18,450,034	4,099
Sterling	\$ 48,808	67,124	822,853	6	—	—	2,268	49,102	\$ 18,962	\$ 302,295	48
Stonington	\$ 433,482	735,480	9,646,299	102	7,820	156,538	11,779	233,152	\$ 170,011	\$ 2,532,352	422
Stratford	\$ 1,250,196	1,564,120	16,225,010	232	100,489	1,844,143	13,642	301,428	\$ 391,257	\$ 5,372,477	1,304
Suffield	\$ 258,343	213,533	2,747,353	40	7,895	167,004	6,705	134,924	\$ 64,149	\$ 1,045,161	184
Thomaston	\$ 143,112	250,480	3,135,460	23	5,871	96,278	3,270	72,198	\$ 57,972	\$ 850,052	155
Thompson	\$ 80,025	178,212	2,650,211	31	172	3,436	4,501	98,087	\$ 44,588	\$ 756,943	98
Tolland	\$ 103,617	193,448	2,551,290	25	277	5,536	6,622	132,291	\$ 54,733	\$ 867,387	135
Torrington	\$ 1,404,972	2,720,936	31,853,585	427	75,858	1,120,205	19,354	291,361	\$ 588,346	\$ 7,356,012	1,622
Trumbull	\$ 888,830	1,968,546	23,306,613	290	52,067	761,500	11,619	244,665	\$ 415,659	\$ 5,435,812	1,132
Union	\$ 12,232	26,425	368,633	2	—	—	217	4,321	\$ 5,233	\$ 76,926	12
Vernon	\$ 856,975	1,029,513	12,277,539	223	54,524	1,072,084	7,129	147,370	\$ 242,095	\$ 3,509,601	765
Voluntown	\$ 10,083	21,119	231,096	2	—	—	595	11,234	\$ 5,572	\$ 76,408	14
Wallingford	\$ 514,589	606,535	4,282,169	78	101,086	1,262,997	1,769	30,265	\$ 188,501	\$ 1,931,690	835
Warren	\$ 10,523	39,605	424,368	6	—	—	1,035	20,544	\$ 10,003	\$ 136,296	22
Washington	\$ 63,933	97,387	1,153,310	16	—	—	4,385	91,092	\$ 30,879	\$ 491,734	78
Waterbury	\$ 5,722,371	10,340,213	118,554,138	1,428	419,924	5,111,225	34,766	732,525	\$ 2,212,021	\$ 27,058,265	6,548
Waterford	\$ 836,630	2,486,358	25,594,709	386	13,797	311,701	10,484	196,207	\$ 469,708	\$ 5,257,308	1,060
Watertown	\$ 899,689	1,725,415	21,829,207	282	113,602	1,706,445	9,229	191,074	\$ 413,814	\$ 5,824,300	1,379
West Hartford	\$ 2,452,694	4,103,409	45,002,742	481	221,160	3,255,815	28,934	449,847	\$ 970,372	\$ 11,991,759	3,088
West Haven	\$ 1,087,160	2,435,575	31,032,066	330	72,914	1,185,163	10,862	233,909	\$ 509,499	\$ 7,088,174	1,416
Westbrook	\$ 119,864	419,890	6,076,009	77	1,055	20,874	3,265	65,393	\$ 82,941	\$ 1,257,157	182
Weston	\$ 108,813	111,133	1,106,815	26	3,273	66,439	6,146	126,351	\$ 41,617	\$ 659,149	122
Westport	\$ 1,496,877	2,106,572	24,857,663	419	112,306	1,321,355	18,435	380,935	\$ 506,984	\$ 6,597,471	1,583
Wethersfield	\$ 584,226	687,383	7,963,282	98	31,973	641,054	4,243	86,652	\$ 156,661	\$ 2,203,594	482
Willington	\$ 80,566	160,764	2,065,017	22	—	—	1,538	29,983	\$ 32,472	\$ 448,243	72
Wilton	\$ 280,056	677,961	7,618,042	102	1,303	24,084	10,743	229,285	\$ 152,295	\$ 2,071,201	362
Winchester	\$ 172,747	339,726	4,307,435	66	5,568	94,415	1,171	23,624	\$ 66,218	\$ 891,053	164
Windham	\$ 652,883	1,524,976	15,320,799	192	36,657	555,355	10,500	234,188	\$ 324,116	\$ 3,865,124	872
Windsor	\$ 1,903,425	6,128,633	78,683,285	898	66,281	1,090,672	21,979	475,682	\$ 1,172,250	\$ 15,899,179	2,797
Windsor Locks	\$ 841,767	2,209,713	25,642,777	281	90,834	1,197,323	6,090	129,891	\$ 469,202	\$ 5,839,907	1,392
Wolcott	\$ 172,177	268,559	3,277,395	40	1,326	26,586	9,051	191,885	\$ 75,948	\$ 1,196,038	186
Woodbridge	\$ 141,001	291,891	3,336,189	60	2,066	41,429	7,814	168,713	\$ 77,136	\$ 1,156,923	197
Woodbury	\$ 96,813	134,153	1,481,088	26	525	10,484	6,773	141,723	\$ 45,072	\$ 714,458	114
Woodstock	\$ 82,763	145,571	1,753,876	12	—	—	3,352	70,044	\$ 35,725	\$ 524,517	84

2018 Actual Spending / 2019 Budget

	2018 Actuals Electric	2019 Plan Electric	2018 Actuals Natural Gas	2019 Plan Natural Gas
Energy Efficiency Programs				
RESIDENTIAL				
Residential Retail Products	\$ 7,599,852	\$ 10,571,071	\$ —	\$ —
Residential New Construction	2,168,706	3,252,279	1,142,750	2,640,923
Home Energy Solutions — Core Services	12,453,123	21,556,370	5,114,429	7,177,820
Home Energy Solutions — HVAC, Water Heaters	5,277,465	5,447,253	7,801,664	7,760,045
Home Energy Solutions — Income Eligible	14,331,397	20,222,877	12,604,218	11,253,423
Residential Behavior	526,544	1,821,476	431,232	745,904
Subtotal Residential	\$ 42,357,087	\$ 62,871,327	\$ 27,094,293	\$ 29,578,115
COMMERCIAL & INDUSTRIAL				
Energy Conscious Blueprint	\$ 8,353,860	\$ 16,587,095	\$ 4,492,984	\$ 6,991,663
Energy Opportunities	33,897,394	43,602,610	6,021,832	7,686,889
Business & Energy Sustainability (O&M, RetroCx, BSC, PRIME)	3,334,726	4,539,934	1,711,556	1,937,561
Small Business	13,898,758	19,234,776	532,222	1,370,152
Subtotal C&I	\$ 59,484,738	\$ 83,964,415	\$ 12,758,595	\$ 17,986,264
OTHER—EDUCATION, ENGAGEMENT & FINANCING				
Customer Engagement	\$ 1,358,489	\$ 1,539,419	\$ 231,282.00	\$ 211,479
Educate the Public	855,924	951,233	199,531	194,859
Educate the Students	81,563	391,554	93,825	67,920
Educate the Workforce	120,724	213,759	34,606	40,488
Residential Loan Program (Includes ECLF and OBR)	1,106,750	1,648,004	92,188	252,659
C&I Financing Support	2,677,386	17,569,775	—	181,332
Research, Development & Demonstration	361,764	320,128	147,771	150,000
Subtotal Education, Engagement & Financing	\$ 6,562,600	\$ 22,633,872	\$ 799,203	\$ 1,098,735
OTHER—LOAD MANAGEMENT				
ISO Load Response Program	\$ 1,230,295	\$ —	\$ —	\$ —
Residential Demand Response	1,087,113	1,689,710	—	—
C&I Demand Response	395,216	551,719	—	—
Subtotal Load Management	\$ 2,712,624	\$ 2,241,429	\$ —	\$ —
OTHER—ADMINISTRATIVE & PLANNING				
Administration	\$ 1,192,127	\$ 881,417	\$ 419,877	\$ 415,137
Marketing Plan	211,737	165,110	83,693	43,890
Planning	805,625	614,668	329,622	268,158
Evaluation Measurement and Verification	2,085,220	1,279,032	580,632	652,569
Evaluation Administrator	220,999	231,625	57,236	56,001
Information Technology	1,481,924	2,079,842	438,878	408,383
Energy Efficiency Board Consultants	382,600	394,967	96,949	95,679
Audits — Financial and Operational	72,000	84,000	18,400	30,000
Performance Management Incentive (PMI)	8,274,518	7,952,900	2,675,155	2,270,306
Admin/Planning Expenditures	\$ 14,726,750	\$ 13,683,562	\$ 4,700,441	\$ 4,240,123
TOTAL EE BUDGET	\$ 125,843,799	\$ 185,394,604	\$ 45,352,532	\$ 52,903,238
STATE DIVERSION OF FUNDS	\$ 58,500,000	\$ 26,750,000	\$ —	\$ —



Peak Demand Savings from the Energy Efficiency Fund only in 2019. 2018 Peak Demand Savings included ISO-NE Demand Response Programs.



Board Members



Ronald J. Araujo
Eversource (Gas)
P.O. Box 270
Hartford, CT 06141



Elin Swanson Katz
Consumer Counsel
Ten Franklin Square
New Britain, CT 06051

William E. Dornbos
Chairperson
Acadia Center
21 Oak Street, Suite 202
Hartford, CT 06106



Neil W. Beup
Designee
Connecticut Retail
Merchants Association
Praxair, Inc.
10 Riverview Road
Danbury, CT 06810



Rob Klee
Commissioner
Department of Energy
and Environmental
Protection
79 Elm Street
Hartford CT 06106



Will Riddle
Connecticut Natural Gas
and
Southern Connecticut Gas
60 Marsh Hill Road
Orange, CT 06477



Eric Brown
Connecticut Business &
Industry Association
350 Church Street
Hartford, CT 06103



Jane Lano
United Illuminating
60 Marsh Hill Road
Orange, CT 06477



Walter Szymanski
Courtesy Attendee
Representing
Wallingford Electric
Division
100 John Street
Wallingford, CT 06492



Photo not
available
at time of
printing.

Justin Connell
Connecticut Municipal
Electric Energy
Cooperative
30 Stott Avenue
Norwich, CT 06360



Bruce McDermott
Murtha Cullina
265 Church Street
New Haven, CT 06510



William Tong
Attorney General
55 Elm Street
Hartford, CT 06106



Amanda Fargo-Johnson
CT RC&D / CT Farm
Energy Program
1066 Saybrook Road,
PO Box 70
Haddam, CT 06438



Taren O'Connor
Office of Consumer
Counsel
Ten Franklin Square
New Britain, CT 06051



Jack Traver
Traver IDC
151 Homer Street
Waterbury, CT 06704



Adrienne Houel
Greater Bridgeport
Community
Enterprises, Inc.
459 Iranistan Avenue
Bridgeport, CT 06605



Chris Plecs
Eversource (Electric)
P.O. Box 270
Hartford, CT 06141a

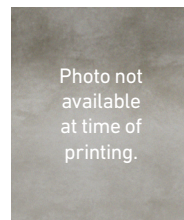


Photo not
available
at time of
printing.

John Wright
Designee, Office of
The Attorney General
Ten Franklin Square
New Britain, CT 06051



Empowering you to make
smart energy choices



The legislation that created the Energy Efficiency Fund and Board is Conn. Gen. Stat. § 16-245m, as amended by P.A. 13-5 § 13 and 13-298 § 16.

The legislation that created the conservation and load management fund for municipal electric companies is Conn. Gen. Stat. § 7-233y.

More information on these laws can be found at EnergizeCT.com/about/CEEF

Energize Connecticut helps you save money and use clean energy. It is an initiative of the State of Connecticut, the Connecticut Green Bank, Eversource, UI, CNG and SCG, with funding from a charge on customer energy bills. Information on energy-saving programs can be found at EnergizeCT.com or by calling 877.WISE.USE.

Energy Efficiency Board
c/o Connecticut Public Utilities Regulatory Authority
Ten Franklin Square
New Britain, CT 06051
877-WISE USE (947-3873)
EnergizeCT.com

Printed on
Recycled Paper



© 2019