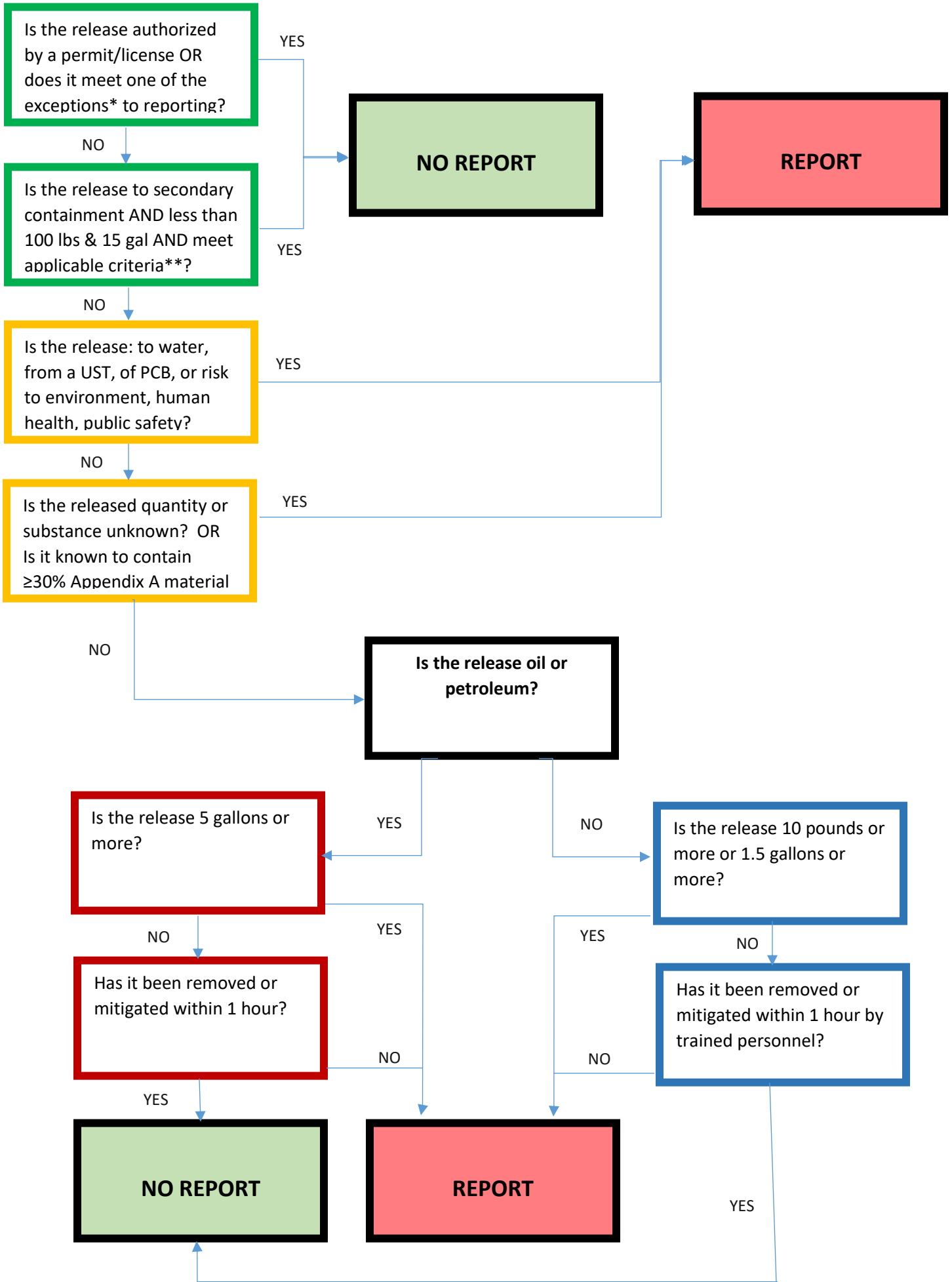


CONNECTICUT PROPOSED RELEASE REPORTING REGULATIONS



**Footnotes**

\*Exceptions – Allowed (regardless of exceedance or violation) by:

- 1) State or federal law;
- 2) Judgement or order of the court;
- 3) Under a laboratory fume hood of incidental amount;
- 4) Minor sheen from roadway, parking lot, driveway normal vehicle use;
- 5) Food products;
- 6) Domestic sewage less than 100 gallons;

\*\* Criteria for releases to containment, must be cleaned within 1 hour AND must NOT be:

- 1) more than 100lbs or 15gal.; 2) involve a UST or PCB; 3) create an emergency

**KEY**

- = exceptions
- = oil or petroleum
- = non-petroleum
- = always report