

# ROLE of FOUNDATIONS

FUNDING PROGRAMS FOR MITIGATION OF CLIMATE CHANGE

SOFT AND HARD INFRASTRUCTURE

# MENU

- **2 Examples of Strong Partnerships:**
  - Robert Wood Johnson Foundation
  - Kresge Foundation
- **Roles & Challenges in Foundation Granting**
- **Problems to Solve and Barriers to Lift**
- **What can Foundations Fund and Provide?**
- **Is there a role for COGS?**
- **What Role for the State?**
- **Thank You!**

# ROBERT WOOD JOHNSON FOUNDATION

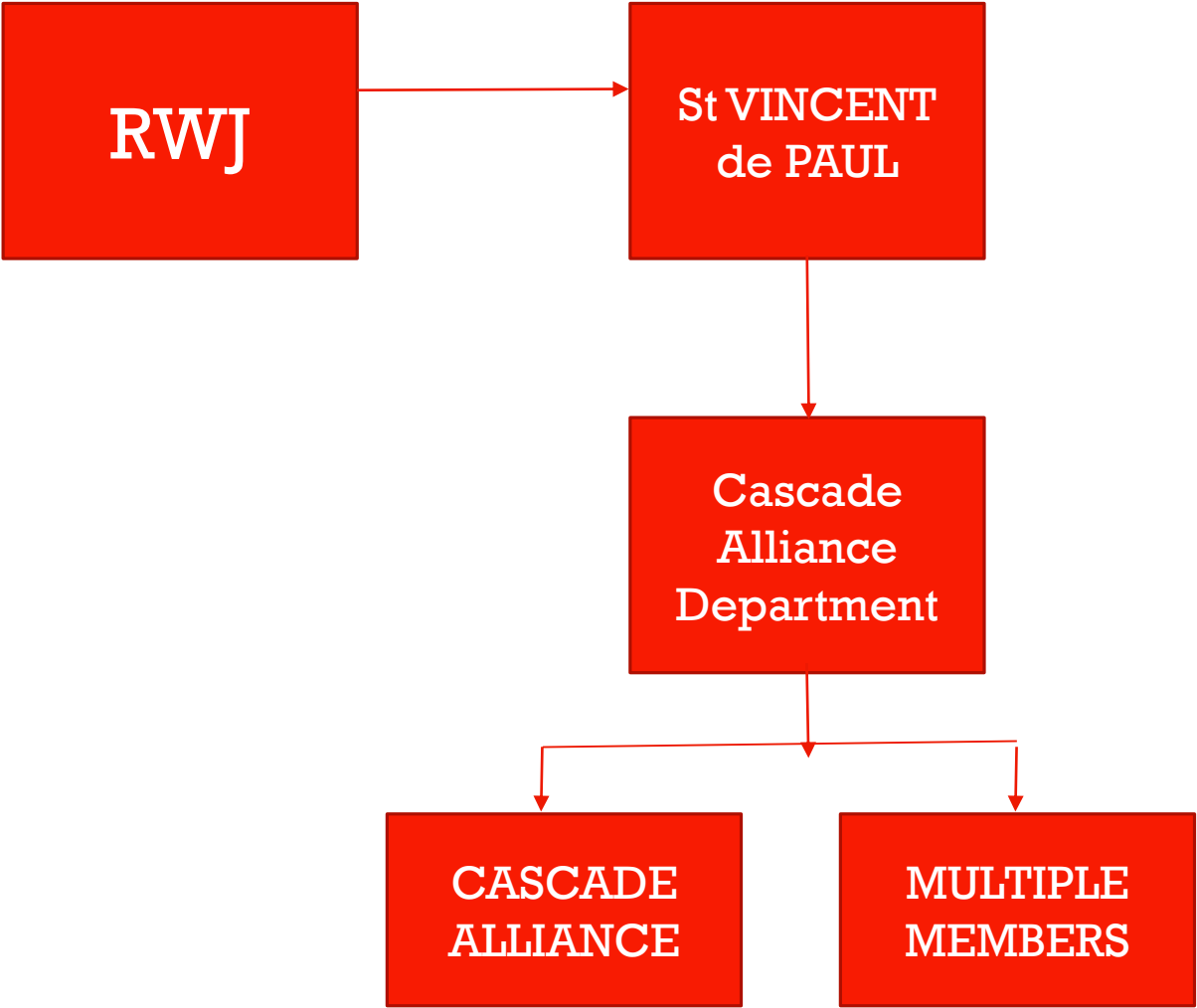
**MISSION: Helping Everyone in American to have  
Equal Opportunity to Pursue Healthier Life**

- **\$11B Assets – Granting \$500M/yr**
- **Focus on Health Equity: largest in US**
- **Healthy Communities**
- **Change Local Conditions**
- **Address Social Determinants of Health**
- **“Good health begins in places where we live,  
learn, work and play”**
- **Therefore:**
  - Promote and Support Access to Good Jobs with Fair  
Pay and Benefits**

# St. VINCENT de PAUL of Lane County, OR

- 84,000 clients
- \$51M Revenues: \$25M from Social Impact Ventures
- Wide ranging programs: Housing, Services for Homeless, Emergency Services
- Focus on Creation of Social Impact Ventures: Triple Bottom Line
- Recycling Programs: diverted in 2018: 44.1 million pounds of materials were diverted from landfills.
- Retail Thrift Stores: 15 retail stores with donation centers and a donation car lot generate revenue for charitable programs.
- Self-Sufficiency Services: helps about 1,100 people with job training and placement each year.

# RWJ, St. Vinnie's & The Cascade Alliance



**The Cascade Alliance helps nonprofits turn discarded items into a stable revenue stream and source of quality jobs for people with barriers.**

# KRESGE FOUNDATION

**Mission: Dedicated to helping cities implement comprehensive climate resilience approaches grounded in equity**

- **\$3.6B Endowment; \$294M annual grants & investments**
- **Environmental Focus Areas: Building Capacity & Commitment; Strengthening Evidence Base & Developing Tools; Transforming Key Urban Systems like Energy, Water**
- **Initiatives:**
  - **Climate Change: Health & Equity**
  - **Climate Resilience and Urban Opportunity**
  - **Climate Resiliency & Equitable Water**

# Funding Infrastructure: Patchwork & Leverage

Climate Resilience &  
Equitable Water Systems



## PARTNERSHIP OBJECTIVES

- Kresge Foundation: \$250,000
- Add 1.35 million gallons of stormwater storage
- Restore and enhance 100 acres of wildlife habitat
- Plant 380 trees for increased stormwater storage and habitat
- Help restore the quality and connectivity of the region's unique habitats
- Improve quality of life for residents by increasing public access to natural areas and parks for communities through 6 new access points
- Reach more than 22,000 people through direct engagement or education



# Climate Resilience & Urban Opportunity

## Wide Range of Projects

- In 2019 dedicated \$29M to prioritizing work led by advocates and organizers in urban communities facing disproportionate environmental burdens
- Grants range from \$15K for a punctual program in an inner city to multi-year programs of \$100K, 500K and \$1M.
- Strong, Durable Partnerships, collaboratives and support of local foundations and organizations
- Example: Urban Sustainability Director's Network, Port Washington, WI
  - \$1M over 2 years
  - Alliance of 22 cities collaborating on innovations to aid transitions from fossil fuels to clean energy while increasing social equity & enhance preparedness
  - To incentivize and support innovation of and accelerate adoption of High Impact Sustainability Practices

# Roles & Challenges

## SCOPE: What Do We Need at State, Regional, Municipal & Community Levels?

- **State:** Finance Major Infrastructure Projects & intervene in assisting creation and realization of projects across the state
- **Regional:** Develop & Finance Projects that Affect Group of Municipalities
- **Municipalities:** Finance Projects that Impact Local Life, coordinate with neighboring municipalities
- **Communities:** Ensure well-being of neighborhood through projects that prepare for and prevent effects of climate change

Problems to Solve  
&  
Barriers to Lift at  
Municipal Level

- **Qualifications for funding**
- **Capacity**
- **Changing Technology**
- **Competition**
- **Narrowness of Granting Scope**
- **Changing Priorities: Flavor of the Month**
- **Funding limitations and restrictions**
- **Funding shortfalls**

# Problems to Solve & Barriers to Lift: Solutions

- **Recognize Fluidity & Change – Define problems, stakeholders & remedies**
  - Coordination across entities, administrations & organizations
- **Look for Unique Ways to Meet Program Goals**
  - Perpetuity, Sustainability, Working Together
  - Continuity
  - Handling Complexity
- **Broaden Focus**
- **Identify Room for Program/Project Growth**
- **Form Collaborations:**
  - Geographical
  - Subject Matter
- **Identify Today's Need?**
  - Deliver on your mission/program in different ways

# WHAT CAN FOUNDATIONS FUND & PROVIDE?

- **Active Partnership in Long-Term Program Goals**
- **Guidance on Best Practices and State of Innovation in Programming**
- **Specific Project Financing: Attention to Scope and Fit**
- **Financing for Program Design, Plans, Consultants**
- **Financing Technical Assistance & Training**
- **Matching Funds to Leverage Federal Funding**
- **Funding “Sustainable CT” Tasks: Assessments, Outreach, Reports**

# IS THERE A ROLE FOR COGS?

- Can assist in development of programs & projects & solicit funds on behalf of municipalities
- Manage projects that cross municipal boundaries
- Have direct access to Mayors and First Selectmen important to decision-making on cross-jurisdictional projects
- Well situated to administer and manage complex (patchwork) funding
- Technical Assistance in Grant Selection, Writing, Administration
- Platform for Pass-through funding

# WHAT ROLE FOR THE STATE ?

- **Identify and Define Projects and Programs**
- **Identify Funding Objectives**
- **Aggregate funding from foundation and federal sources**
- **Redirect funds to COGS, municipalities, communities and organizations**

THANK YOU

**Susmith Attota**, Town Planner  
Town of Stratford  
2725 Main Street  
Stratford, CT 06615  
(203) 385-4017  
sattota@townofstratford.com

**Rina Bakalar**, Dir. Economic & Community Development  
Town of Trumbull  
5866 Main St. Trumbull, CT 06611  
(203)452-5043  
rbakalar@trumbull-ct.gov

**Matt Fulda**, Executive Director  
CT Metropolitan Council of Governments  
1000 Lafayette Blvd. Suite 925  
Bridgeport, CT 06604  
(203) 366-5405 x28  
mfulda@ctmetro.org

**Town of Trumbull, Sustainable CT Committee**