

United States Department of the Interior
National Park Service

National Register of Historic Places Registration Form

This form is for use in nominating or requesting determinations for individual properties and districts. See instructions in National Register Bulletin, *How to Complete the National Register of Historic Places Registration Form*. If any item does not apply to the property being documented, enter "N/A" for "not applicable." For functions, architectural classification, materials, and areas of significance, enter only categories and subcategories from the instructions.

1. Name of Property

Historic name: East Haven High School

Other names/site number: N/A

Name of related multiple property listing:

(Enter "N/A" if property is not part of a multiple property listing)

2. Location

Street & number: 200 Tyler Street

City or town: East Haven State: Connecticut County: New Haven

Not For Publication: Vicinity:

3. State/Federal Agency Certification

As the designated authority under the National Historic Preservation Act, as amended,

I hereby certify that this ___ nomination ___ request for determination of eligibility meets the documentation standards for registering properties in the National Register of Historic Places and meets the procedural and professional requirements set forth in 36 CFR Part 60.

In my opinion, the property ___ meets ___ does not meet the National Register Criteria. I recommend that this property be considered significant at the following level(s) of significance:

___ national ___ statewide ___ local

Applicable National Register Criteria:

___ A ___ B ___ C ___ D

| | |
|---|--|
| <p>_____</p> <p>Signature of certifying official/Title:</p> <p>_____</p> <p>State or Federal agency/bureau or Tribal Government</p> | <p>_____</p> <p>Date</p> |
| <p>In my opinion, the property ___ meets ___ does not meet the National Register criteria.</p> | |
| <p>_____</p> <p>Signature of commenting official:</p> <p>_____</p> <p>Title :</p> | <p>_____</p> <p>Date</p> <p>_____</p> <p>State or Federal agency/bureau or Tribal Government</p> |

East Haven High School
Name of Property

New Haven, CT
County and State

4. National Park Service Certification

I hereby certify that this property is:

- entered in the National Register
- determined eligible for the National Register
- determined not eligible for the National Register
- removed from the National Register
- other (explain:) _____

Signature of the Keeper

Date of Action

5. Classification

Ownership of Property

(Check as many boxes as apply.)

- Private:
- Public – Local
- Public – State
- Public – Federal

Category of Property

(Check only **one** box.)

- Building(s)
- District
- Site
- Structure
- Object

East Haven High School
Name of Property

New Haven, CT
County and State

Number of Resources within Property

(Do not include previously listed resources in the count)

| Contributing | Noncontributing | |
|-------------------|-------------------|------------|
| <u>1</u> | <u>1</u> | buildings |
| <u> </u> | <u> </u> | sites |
| <u> </u> | <u> </u> | structures |
| <u> </u> | <u> </u> | objects |
| <u>1</u> | <u>1</u> | Total |

Number of contributing resources previously listed in the National Register

6. Function or Use

Historic Functions

(Enter categories from instructions.)

EDUCATION/schools

Current Functions

(Enter categories from instructions.)

VACANT

East Haven High School
Name of Property

New Haven, CT
County and State

7. Description

Architectural Classification

(Enter categories from instructions.)

LATE 19TH & 20TH CENTURY REVIVALS: Colonial Revival

Materials: (enter categories from instructions.)

Principal exterior materials of the property: BRICK

Narrative Description

(Describe the historic and current physical appearance and condition of the property. Describe contributing and noncontributing resources if applicable. Begin with a **summary paragraph** that briefly describes the general characteristics of the property, such as its location, type, style, method of construction, setting, size, and significant features. Indicate whether the property has historic integrity.)

Summary Paragraph

The East Haven High School is a three-story, masonry building designed in the Colonial Revival-style by Roy W. Foote and completed in 1936 to serve as the first public high school in the Town of East Haven, New Haven County, Connecticut. It is located in a residential neighborhood in the town center, just south of the civic and commercial core on Main Street. The school currently consists of the original H-shaped 1936 building with rectangular classroom wing additions to either side, completed in 1964 and 1973, a 1973 pool addition and bridge connector, two one-story rear additions off the 1936 building's gymnasium, and a one-story standalone brick garage behind the 1973 wing. The 1936 building retains its original design, layout, materials, and simple ornament. The additions are similar in scale and materials and do not detract from the original building.

Narrative Description

Setting

The East Haven High School occupies a relatively flat, six-and-a-half-acre parcel that is surrounded by a dense neighborhood of modest-size single-family houses. The neighborhood

East Haven High School

Name of Property

New Haven, CT

County and State

includes a mix of late-nineteenth through twentieth century housing; post-war Cape Cod cottages are common in the area. The school is sited on the north half of the parcel and the original 1936 section faces north to Tyler Street. The parcel is bounded by Tyler Street to the north, the rear parcels that face Thompson Avenue to the east, Ure Avenue to the south, and the rear parcels that face French Avenue to the west. The building is composed of the original building and boiler house built in 1936 as well as wing additions completed in 1964 to the west and 1973 to the east, a pool built to the southwest, one-story additions off the gymnasium, and a standalone one-story garage located south of the 1973 addition. The building is set back approximately 75 feet from Tyler Street. A paved U-shaped drive for student pick up and drop extends across the front of the parcel parallel to the street. The drive is separated from Tyler Street by a grassy median with parallel sidewalks on either side. Another sidewalk is located directly in front of the building and extends from the northwest corner of the 1964 addition to the northeast corner of the 1973 building. Concrete sidewalks provide access to side entrances and to the pool addition.

At the northeast corner of the site, the driveway runs north-to-south along the 1964 addition and connects to a rear parking. Access to parking on the eastern side of the site was blocked by the 1973 addition. The additional parking areas are accessed from Ure Street. The site is composed primarily of paved parking lots and a lawn. In between paved parking areas in the southeast and southwest corners of the site is a grass lawn that is surrounded by a rusting metal chain-linked fence. There are no associated playing fields on the site. The site has minimal vegetation except for some overgrown shrubbery in front of the main elevation and a row of trees along Ure Street. There is a single birch tree in front of the 1973 addition.

Exterior

Original Building (1936) – Photos 1, 2, 3, 9, 10, 12, 13, 14

Completed in 1936, East Haven's first high school is a large three-story building designed in the Colonial Revival style. It is constructed of reinforced concrete with red brick exterior set in running bond. The building has an H-shaped plan, comprised of a three-story east-west classroom block parallel to Tyler Street and a perpendicularly oriented, two-story auditorium and gymnasium block that is intersected at its south end by another two-story, east-west block containing a cafeteria and specialized classrooms. At the end of this section, there are two one-story brick additions on either side of the gymnasium from 1973. A one-story boiler room connects to the west of the auditorium and has a tall brick smoke stack. The three-story 1973 classroom addition is attached to the east side of the original school by a narrow brick connector. The connector is slightly recessed, but the 1973 wing blocks views of the school's original east elevation. The 1964 classroom addition is two stories and is attached to the original west elevation by a two-story hyphen.

Most of the building has a flat roof except for the perpendicular auditorium and gymnasium sections of the building, which are slightly pitched, and the three center bays, which are front-gabled forming a pediment on the north façade. The pitched roof has asphalt shingles and the flat portions have a rolled asphalt roofs. A tower emerges from the center of the gabled roof. The tower has an octagonal base topped with a domed belfry with a weathervane and clock. The belfry has a copper roof. The exterior facades are of red brick masonry detailed with concrete

East Haven High School

Name of Property

New Haven, CT

County and State

and cast stone that is used for window sills, pilasters, and frieze. The façade also has wood accents such as a denticulated cornice separating the second and third story, cornice at the roofline, and door surrounds. The denticulated cornice continues above the second story on the west elevation and the visible part of the east elevation.

The façade which faces north is twenty-one bays wide and is broken up ornamentally to give the appearance of three pavilions, including a three-bay-wide central pavilion, and a three-bay-wide pavilion at each end of the façade. The central pavilion projects slightly and is the most ornate (photos 1 & 2). It is distinguished by a triangular pediment with ocular window set within the tympanum. Double-height, engaged pilasters with Corinthian capitals support the frieze above the main entrance. There are paired pilasters at the outer bays with single pilasters between the inner bays. The frieze reads "EAST HAVEN HIGH SCHOOL" in concrete; festoons of leaves and a denticulated cornice adorn the frieze. Two cornices span the length of the building; the cornice above second floor has dentils. Concrete stairs lead to the three identical entrances at the first story of the central pavilion. The entrances have ornamental door surrounds with broken scroll pediments. Replacement metal and glass doors are set within the historic door openings. Three bays at either end project slightly from the facade and are accented by double height pilasters that divide each bay. Pilasters are topped with Doric capitals.

The façade has a symmetrical fenestration pattern consisting of rectangular openings that contain original, paired, multi-lite steel windows with operable hoppers.

Secondary and rear elevations are generally much simpler in design than the primary north elevation (photos 9, 10 & 14). They are faced in red brick set in running bond. The small wood cornice continues along the rooflines of the secondary and rear elevations. The south elevation of the main block has a symmetrical fenestration pattern like the facade, but the windows have been boarded. Window openings have cast-stone sills. A wood cornice runs along the roofline. The perpendicular section which includes the gymnasium and auditorium have few windows. The boiler house (photo 10) has few windows and doors. It is topped with a wood cornice.

The one-to-two-story rear wings bump out where the auditorium and gymnasium meet (photo 13). The wings run parallel to the main block. The wings are predominantly two-stories but the outer bays drop down to one story. The wings are constructed of brick with a very slightly pitched sheet asphalt roof. The wings have a regular fenestration pattern with divided lite steel windows and cast-stone. The second floor has fixed six-lite steel windows.

The south elevation of the gymnasium section has a slightly asymmetrical appearance (photo 12). The gymnasium section is approximately eight bays wide and has a slightly pitched roof. Bays are divided by simple brick piers that span from the ground floor to the roofline. There are no windows. There are paired double metal doors in the third bays in on each side. The two outer bays on either side of the gymnasium date to its expansion which is evident in the slight color difference of the brick. The gymnasium is flanked by two one-story additions that line up with outer two bays of the gymnasium and jut out into the lawn. The one-story additions have two twelve-lite aluminum windows on either side of a single-leaf metal door. There are double doors in the southeastern corner of the west addition and southwestern corner of the east addition. The

East Haven High School

Name of Property

New Haven, CT

County and State

west addition is slightly longer and has an additional four-lite window in the southwestern corner. The west addition connects to the pool addition.

Addition (1964) – Photos 5, 6, 8, 9

The 1964 classroom addition is two stories tall with raised basement on the western elevation and topped with a flat sheet asphalt roof with four skylights. The 1964 addition is roughly rectangular-shaped in plan, with a two-story connector accessing the 1936 wing to the east. There is a concrete and metal bridge between the second story of the south elevation and the later pool building at the southwest corner of the site. The 1964 addition is constructed of reinforced masonry with a concrete topped, metal bar joist floor structure and is primarily clad in red brick. It sits upon a small concrete base and has a flat roof with a small metal cornice.

The north and west elevations are the main street-facing elevations. Full-height metal and glass curtain wall systems mark each bay and are separated by brick piers. The curtain wall systems create, wide vertically emphasized bays. The window bays are set within metal curtain wall frames. The systems are constructed of interlocking metal panels and window frames, which were built at the same time as the building frame. The frames were then enclosed within the CMU and brick walls. There are basement-level window openings on each bay of the west and east elevations. Many of these windows have been removed and the openings have been infilled with wood planks or other materials. The openings on the north elevation are infilled with metal louvers. Basement-level windows rest directly on the concrete base.

The main entrance is on the first-floor level of the connector between the 1964 addition and the 1936 wing. The entrance has paired double doors of metal and glass. The entrance leads to the stairwell located to the west of the connector, and is the only direct point of access to the first floor of the 1964 addition from the exterior. Entrances located at the basement level of the west, south, and east elevations provide additional access points to the 1964 addition. The entrance at the second-northernmost bay of the west elevation is accessible via a concrete ramp or a set of concrete steps, and is set with paired metal doors. The glazing was removed from the viewing panels and the openings were infilled with wood panels. A metal-covered concrete canopy is located above the entrance.

Near the southern end of the west elevation, another set of paired metal doors provides access to the stairwell at this location. The entrance has a full-height metal side panel. The viewing panels of the doors and side panel are infilled with wood.

The east elevation faces a rear parking area and has the same curtain wall aesthetic with four vertically emphasized bays.

Addition (1973) – Photos 4, 12

Opened in 1973, this addition is three stories tall and has a flat EPDM roof. The addition is rectangular-shaped in plan with a less ornamented façade and is constructed of red brick set in running bond and concrete. The north elevation is five bays wide (photo 5). The bays are narrow

East Haven High School

Name of Property

New Haven, CT

County and State

slits consisting of continuous vertical bands of concrete with fixed sash. It features bands of concrete below the windows on each story. A simple cornice sits above the second floor mimicking the aesthetic from the 1936 building. The building is accessed through entrances in the connector to the original 1936 building on the north elevation. The south, east, and west elevations have the same fenestration as the main façade.

Pool (1973) – Photos 7, 8, 11

A rectangular-shaped brick building with concrete base is located in the southwest corner of the lot and holds the town pool. The pool is surrounded by a concrete sidewalk on the north, south, and west sides of the building. The building has few windows and is connected to the 1964 addition to the north and gymnasium to the east. The north elevation has four pedestrian entries. Entries in the northeast and northwest corners feature metal and glass assemblies with a single-leaf door paired with a fixed sidelight. Adjacent to the entrance in the northeast corner is a set of double metal doors with a square glass viewing panel. The final entrance is located under the bridge. There are no doors on the west elevation. The east elevation abuts the one-story gymnasium addition. The south elevation has two sets of metal double doors. The set in the middle is accessed by a concrete ramp with metal pipe handrail (photo 11).

Garage – Photo 15

A small one-story brick garage is located in the southeast corner of the lot behind the 1973 addition (photo 15). The garage is clad in red brick and is topped with a flat roof with metal coping. There are three vehicle entrances on the north elevation of the garage, with a single pedestrian entrance to the west of the vehicle entrances. There are single window openings on the east and west elevations, while the north elevation is a blank wall. The garage was constructed at the same time as the 1973 addition.

Interior

Original Building (1936) – Photos 16-21

The interior of the original three-story classroom block contains approximately 50,000 square feet. Classroom and office spaces are located on either side of the east-to-west running main corridor. The interior is accessed from the main entrances off the north elevation. The entrances open to a small entry vestibule. The vestibule has three paired doors with transoms leading to the main floor area. The ceiling and perimeter walls of the vestibule are painted. The floor is covered with vinyl composite tile (VCT). Metal plaques decorate the east and west walls of the vestibule. The vestibule opens to the main east-to-west running corridor (photo 16). The double-loaded corridor runs through the center of the floor, with classrooms and offices on either side and is constructed of concrete masonry units (CMU) that have been painted.

The corridor has VCT flooring and the ceilings are covered with acoustic ceiling tile (ACT), with later hanging fluorescent lighting. The original base is of concrete, troweled to a smooth finish and then painted. This concrete base is extant throughout the 1936 Building, including in the

East Haven High School

Name of Property

New Haven, CT

County and State

corridors. There are painted metal lockers and bulletin boards along the corridor walls. Entrances off the corridor are recessed and set with single-leaf wood or metal doors. The corridor opens to the 1964 addition to the west and the 1973 addition to the east.

Multiple-occupancy restrooms are located along the southern end of the corridor, near the center of the floor. There are single-occupancy restrooms in some of the offices to the north of the corridor. Restrooms have ceramic tile flooring and ceilings are covered with dropped ACT.

Classrooms and offices located off the corridor share typical finishes and materials (photos 17 & 21). The historic principal's office is located to the west of the main entrances, and retains some original wood doors and frames. Floors are covered with VCT or carpeting. Ceilings have ACT, with later hanging fluorescent lighting. Perimeter and partition walls of CMU are painted, with vinyl base applied over the historic concrete base in many areas. There are metal heating systems in some classroom and office spaces.

The auditorium is located to the south of the main block, at the center of the building (photo 18). The raised wood auditorium stage is located at the southern end of the room. The stage has is historic simple wood proscenium. At the rear of the room, a wood beam is supported by two wide columns and decorative brackets on either side. Ceilings have ACT. The historic seating has been replaced with blue plastic chairs. The auditorium is flanked by two smaller corridors, which run from the main block south. The smaller corridors share finishes and fixtures with the larger east-to-west corridor. There is a boiler room and some utilitarian/work spaces at the west end of the corridor. Behind the stage another corridor runs east-west providing access to the wood shop, food lab and gymnasium. The second floor features a balcony overlooking the gymnasium.

The gymnasium is an open volume with wood basketball courts (photo 19). Ceilings have ACT, with later hanging fluorescent lighting. Perimeter walls are painted CMU. Bleachers are located along the western edge of the gymnasium. Locker rooms are located to the southwest and southeast corners of the gymnasium in one-story additions. Locker rooms have CMU perimeter walls, ACT ceilings, and tiled flooring. There are rows of metal cage lockers. Bathroom and shower areas have small tile flooring.

Addition (1964) – Photos 22, 23, 24

The 1964 addition is accessed through doors at the southwest corner of the building and where it connects to the original High School on the north elevation. The general circulation of the building runs north-to-south with rooms located on either side of a double loaded corridor. There are two sets of switchback stairs in the 1964 addition. The northernmost stair is located near the northeast corner of the building, to the west of the connector. The southernmost stair is located near the southwest corner of the building. Both stairs provide access from the basement through the second floor. The stairs share typical finishes and features (photo 24). The stairs are constructed of metal, with metal stringers and risers. The treads and landings are of terrazzo. Later vinyl pads have been applied near the nose of the treads. Stairwell walls are of glazed tile. There are metal bar handrails along the outer stairwell walls, while a steel railing with hairpin

East Haven High School

Name of Property

New Haven, CT

County and State

spindles is located at the interior of the stair. The railing continues along the perimeter wall of the landings.

The first and second floors of the 1964 addition share an identical floorplan. The main corridor runs north-to-south through the center of the building, with a smaller east-to-west running corridor at the northern end of the floor meeting the connector to the east. The corridor has VCT flooring, while walls are of painted CMU with glazed tile cladding and vinyl base. Classroom doors off the corridor are of metal with wire-glass view panels. Later metal lockers are located alongside the corridor walls. Ceilings are covered with ACT with fluorescent hanging lights.

Classroom spaces along either side of the corridor have tile flooring. Walls are of painted CMU, with vinyl base. Ceilings are covered with dropped ACT. Blackboards and mechanicals remain in some classrooms, but most are in poor condition. The two large classrooms along the eastern perimeter walls on both floor levels have folding partitions at the center of the room.

The connector has terrazzo floors and glazed tile perimeter walls (photo 22). There are restrooms located to the south of the connector on both floors. The spaces at the northeast corner of each floor have been subdivided as smaller office and storage spaces.

There is a basement level in the 1964 addition which holds the cafeteria and kitchen space for the school, as well as a faculty café, restrooms, and storage areas. The cafeteria, café, and storage areas have VCT floors. Perimeter walls are of painted CMU. Partitions are painted. The ceilings are covered with dropped ACT. The kitchen has ceramic tile flooring. Perimeter walls are clad in glazed tile. The ceiling is painted. There are two rows of equally-spaced square concrete columns running north-to-south through the center of the kitchen and cafeteria. The columns are painted in the kitchen and covered in glazed tile in the cafeteria.

Addition (1973) Photos 25 & 26

The interior of the 1973 addition is largely devoid of ornamentation and is generally utilitarian. Double-loaded corridors run north-to-south through the center of each floor (photo 25), with classrooms (photo 26) and offices on either side. There are two sets of switchback staircases in the 1973 addition, one at the southern end of the building and one in the connector with the 1936 building. Finishes are typical throughout the 1973 addition, with vinyl tile flooring, painted CMU perimeter and load-bearing partition walls, vinyl base, and dropped ACT below metal structural ceilings. There are metal lockers in the corridors, and some classrooms retain chalkboards.

Pool (1973) – Photo 27

The interior of the pool addition is a large open volume with a rectangular pool at the middle. The pool is surrounded by concrete. The steel structural system of the roof is exposed.

Integrity

East Haven High School
Name of Property

New Haven, CT
County and State

The East Haven High School remains in its original location in the town center, within the setting of a neighborhood of modest-scale housing. The building retains its characteristic massing, exterior materials and surface ornament, and many of the original windows. The majority of the historic floor plan is intact on the interior. The 1973 addition, garage, and pool that lie outside of the period of significance do not detract from the integrity of the site. The additions have compatible materials and scale. The building retains its feeling and association as an early twentieth-century high school with expansions commensurate with local population growth.

East Haven High School
Name of Property

New Haven, CT
County and State

8. Statement of Significance

Applicable National Register Criteria

(Mark "x" in one or more boxes for the criteria qualifying the property for National Register listing.)

- A. Property is associated with events that have made a significant contribution to the broad patterns of our history.
- B. Property is associated with the lives of persons significant in our past.
- C. Property embodies the distinctive characteristics of a type, period, or method of construction or represents the work of a master, or possesses high artistic values, or represents a significant and distinguishable entity whose components lack individual distinction.
- D. Property has yielded, or is likely to yield, information important in prehistory or history.

Criteria Considerations

(Mark "x" in all the boxes that apply.)

- A. Owned by a religious institution or used for religious purposes
- B. Removed from its original location
- C. A birthplace or grave
- D. A cemetery
- E. A reconstructed building, object, or structure
- F. A commemorative property
- G. Less than 50 years old or achieving significance within the past 50 years

East Haven High School
Name of Property

New Haven, CT
County and State

Areas of Significance

(Enter categories from instructions.)

EDUCATION

Period of Significance

1936-1969

Significant Dates

1936: Completion of original school building
1964: Completion of addition

Significant Person

(Complete only if Criterion B is marked above.)
N/A

Cultural Affiliation

N/A

Architect/Builder

Foote, Roy W. - Architect
Fusco – Amatruda Contractors

East Haven High School

Name of Property

New Haven, CT

County and State

Statement of Significance Summary Paragraph (Provide a summary paragraph that includes level of significance, applicable criteria, justification for the period of significance, and any applicable criteria considerations.)

East Haven High School is significant under National Register Criterion A for its association with the educational development in the town of East Haven, Connecticut. East Haven High School was founded on the educational principles associated with the “Public High School Movement” which prioritized personal individuality and serving students on unique and varied career trajectories. Experienced Connecticut school architect, Roy W. Foote designed a Colonial Revival style school that would facilitate the modern curriculum established by the school board. The curriculum aligned with state and national trends to provide practical skills and job preparedness. The East Haven High School was the first public high school in the town and was funded in part by the Public Works Administration. Over time, the building was expanded, reflecting changes in educational needs and the growth of the community. The additions include two classroom additions (1964 & 1973), expansion of the gym, and a pool which allowed the building to remain in use for over 60 years.

The period of significance for the East Haven High School is from 1936, the year the school opened with funds from the PWA to create a modern building for the students of East Haven, to 1969, the fifty-year age cut-off for significance as it continued to serve the educational needs of its students and the community.

Narrative Statement of Significance (Provide at least **one** paragraph for each area of significance.)

Criterion A: Education

East Haven High School reflects the state and national trend of secondary education as an individualized experience to prepare students for diverse career paths. The curriculum which offered three distinct degree programs is mirrored in school’s layout and design. East Haven’s educational decisions were informed by what would later be deemed the “Public High School Movement”. The “Public High School Movement” comprises the time between 1910 and 1940 when rapid changes in high school education were taking place throughout the country and high school was no longer only for college bound students. In that time span, Connecticut saw its high school graduation rates balloon from 1,580 in 1911 to 14,418 by 1938.¹ Many factors such as the need for skilled labor, the decline of the agricultural industry in the state and the Great Depression compounded to create a new wave of high-school-aged students looking to enroll. Curricula were designed to meet the individual needs of the students.

Increased enrollment in schools coupled with new expectations for modern high school class offerings left many towns ill-equipped to handle the influx of students. Schools were becoming over-crowded and were not designed for classes now standard in education such as shop rooms,

¹ Rose, Carrie. “Milestones in Connecticut Education: 1912-2012,” *Office of Legislative Research*. 28 February 2012.

East Haven High School

Name of Property

New Haven, CT

County and State

science laboratories, and home economics rooms. In the depths of the Great Depression, towns often could not afford new construction without the aid of federal funding. Created to spur the economy, the Public Works Administration (PWA) became a crucial component of school construction nation-wide. The PWA was a federally funded program under Franklin Delano Roosevelt's New Deal that provided loans and grants for federal and non-federal projects. The program had no requirements for architectural style, materials, or type of construction other than that the materials had to be sourced and manufactured in the United States (with few exceptions). Communities, including East Haven, benefitted greatly from the funding provided for schools.

One of the major benefits of the funding was that it gave the loans and grants to governments who could use the funds to hire local architects, engineers, and contractors and bring jobs back to communities. The East Haven building committee hired New Haven architect Roy W. Foote and New Haven contractors Fusco-Amatruda. The Fusco-Amatruda Company was made up of Louis Fusco and Thomas T. Amatruda. Amatruda was a professional engineer and president and treasurer of the company. Both were residents of New Haven. Roy W. Foote was local and prolific in Connecticut. He was born in Huntington, Connecticut on May 14, 1879. He began his training under New Haven Architect Leoni. B. Robinson and worked as a draftsman in his office for ten years.² In 1906 Foote joined Charles F. Townsend with whom he partnered until 1915.³ Foote then set off on his own designing a variety of building types including residential, commercial, and civic architecture in a range of styles. Early commissions included the Washington School in West Haven, Connecticut, a parochial school in Wallingford, Connecticut, the William Schollhorn factory, the J. J. Newman corset factory, the Majestic Laundry building, the D.M. Welch building, and many residences.⁴ He often worked in the Colonial Revival style and those buildings included a Masonic Temple (New Haven, 1926), and the United Illuminating Company Building (New Haven, 1930).

Despite all of Foote's previous accomplishments, he was likely hired because of his work on the Hamden High School (Hamden, 1935).⁵ Hamden, a neighboring town within New Haven County, completed Hamden High School using PWA funds. The style and design of the school largely met the needs of East Haven and the plans were adapted for the East Haven High School. East Haven High School was built the following year. School buildings constructed using PWA funds focused on solving three major concerns: unsanitary school buildings, overcrowding that resulted in double sessions or part time, and lack of construction during the depression.⁶ These problems were intensified by a lack of construction during World War I. Attempts to catch up on construction from 1922 through 1928 were cut short by the Great Depression which put a stop to the recovery.

² Hill, Everett Gleason. *A Modern History of New Haven and Eastern New Haven County*, Volume 2, S. J. Clark, 1918 P 412.

³ Southern New England Telephone Company NR

⁴ Ibid.

⁵ Later in his career Foote collaborated with Douglas Orr, a Yale graduate and New Haven architect. Although he designed many buildings in the Colonial Revival Style, he also designed buildings in the Art Deco style which he employed in the Southern New England Telephone Company Building in New Haven.

⁶ Public buildings: a survey of architecture of projects constructed by federal and other government bodies, p. 28

East Haven High School

Name of Property

New Haven, CT

County and State

New Haven County was a microcosm of the larger trends seen nationally. East Haven is a coastal town located east of New Haven, in New Haven County. Its history is tied closely to New Haven's. Prior to the school's construction, students of East Haven attended New Haven High School. In 1859, New Haven established its first high school. A school building was constructed in 1871 and was the high school for approximately 30 years. In 1903, New Haven built a new school which had the capacity to hold 1,562 people and an addition in 1914 to hold 768 more. Similar to schools across the country by 1918, the school population reached 4,007 students which resulted in double sessions and relocating students to the manual training building.⁷ Because East Haven and other surrounding towns had such small populations, residents sent their children to New Haven High School on a tuition basis. There was a clear stress on the facilities.

New Haven High School had the highest enrollment in the state and was becoming overcrowded. In 1931, East Haven spent \$35,236.05 for tuition to New Haven High School with an additional \$5,000 in transportation costs for 325 students.⁸ Two years later the costs rose to \$43,352 for tuition and \$6,978 on transportation for 438 students. The superintendent's report for the year showed 140 students in grade 9, 118 in grade 10, 95 in grade 11, and 85 in grade 12. The high cost of sending students to New Haven coupled with New Haven's announcement in 1932 that they would be limiting admission from surrounding towns sparked discussion of a new school in East Haven.⁹ Following the announcement, the East Haven School Board went to Branford, Connecticut, a nearby town to look at their school. In 1931, East Haven was sending just 325 students to New Haven High School and Branford had approximately 350 students with a capacity to serve about 600. East Haven decided that they would need much larger capacity. The population of East Haven was growing and increasing numbers of students were continuing their education through high school. By the time the school was completed in 1936, East Haven had a high school population of 500 students. The school was built to accommodate twice that number or 1000 students.

Budget was a central factor in the planning and execution of East Haven High School. In December of 1935, East Haven received several bids from contractors which all exceeded the funds set aside for the project. The P.W.A. suggested phasing the construction, but the town protested and instead the architect R. W. Foote revised his plans to reduce costs. Foote could decrease costs without removing the essential features of the design. Bids for construction were reopened on January 30, 1936 and were to be within the \$360,000 limit.¹⁰ By February 6, 1936, three new bids were sent to the state PWA office for review.¹¹

Ground was formally broken on East Haven High School on March 6, 1936. The ceremony was attended by notable townspeople including James F. Hines, chairman of the building committee, Frank J. Cox, town treasurer, Chauncy T. Warner, town clerk, William E. Gillis, superintendent of schools, Reverend Father McTeague, William Hogan, chairman of the board of assessors, and

⁷ Hill, Everett G, ed. *A Modern History of New Haven and Eastern New Haven County*. Vol.1. S.J. Clarke Publishing. 1918.

⁸"Need of New Haven High School Stressed by Supt. Wm. E. Gillis," *The Branford Review and East Haven News*. 2 March 1933.

⁹ Unpublished Research from East Haven Historical Society

¹⁰ "New School Bids will be opened Thurs. Jan.30" *The Branford Review and East Haven News*. 23 January 1936.

¹¹ "Committee Sends School Bids for WPA Approval," *The Branford Review and East Haven News*. 6 February 1936.

East Haven High School

Name of Property

New Haven, CT

County and State

John Tidgewell, secretary of the board of education, among others.¹² East Haven High School was designed in the Colonial Revival style. Although not required by the PWA, the Colonial Revival was a popular choice, especially in school buildings.

The project was completed at a final cost of approximately \$418,000. The school was built with funds from the town and a grant from the Public Works Administration (PWA). East Haven received \$188,000 from the PWA which was typical of these projects; the local government normally provided approximately half the cost of buildings funded through these grants. Throughout its ten-year history, the PWA provided six billion dollars in funding across the country. The construction of the East Haven High School provided 176 men with jobs over a nine-month time frame.¹³

When creating its first high school, the town evaluated the needs of the community to create better programs that would prepare students for available jobs. Recognizing that most students would not be attending college, the curriculum included practical courses such as art, manual arts, home-making, and social sciences.¹⁴ East Haven High School's inaugural "Program of Studies" outlines the three paths students could take: Preparatory, Commercial, and Civic Curriculum (See Figure 2).¹⁵ The preparatory curriculum was designed for students on the path to college, technical schools, and teacher's colleges. The commercial curriculum was designed for students who wanted to go into business and was meant to be flexible to give students the ability to specialize. Finally, the civic curriculum was available for students with an undefined career path.

The design of East Haven High School was informed by the school's curriculum. Superintendent William E. Gillis observed that "Plans to fit the times called for a program and a philosophy of education different than the pure college entrance type... With the decision made for the building of a school it was essential to lay out a general plan as to the type of instruction needed and the kind of building necessary to carry out such a plan."¹⁶ The dynamic curriculum was created to serve the diverse needs of students with unique career trajectories. Education was taking a more varied approach to ready students for jobs outside the classroom. The school's interior layout was organized to cater to the three diploma programs. Dedicated spaces for domestic science, art, sewing, chemistry, physics, biology, stenography, typewriting, a library, an auditorium, and a gymnasium. The classrooms were organized so that similar subjects were grouped together. On the third floor, the science classrooms were clustered on the eastern side of the building with the stenography and typing-writing on the western side. Classrooms were well-organized with efficient designs such as the sewing room which featured locking drawers that could be transported to a student's workspace and replaced at the end of class. Physics classrooms had A.C. and D.C. power and clocks with second hands for experimentation. The biology room had models and glass tanks. Each of these features would have been expected in a modern high school to be in keeping with current educational standards.

¹² "Ground Broken for High School in East Haven," *The Branford Review and East Haven News*. 5 March 1936.

¹³ "New Haven County Benefits" *New Haven Evening Register*. Oct 22, 1936

¹⁴ *The Nation's Schools* p. 46

¹⁵ "Program of Studies: 1936-137" East Haven High School, East Haven, Connecticut

¹⁶ *The Nation's Schools* p. 46

East Haven High School

Name of Property

New Haven, CT

County and State

The modern school approach looked beyond the simple academic needs of students and encompassed the health and happiness of the individual. One component to student health was the physical structure of the building. East Haven High School was designed to be fire resistance and have proper ventilation and sanitation which were all important design elements of a modern school. East Haven High School incorporated these features with masonry construction, large windows for ample light and air circulation, and updated bathroom and locker rooms. The ratio of window area to floor space was greater than required by law.¹⁷ The second element is the physical health of the student through proper exercise and extracurricular activities. Modern schools were expected to have proper auditorium and gymnasium spaces. Physical education was part of the school's first curriculum, but the gymnasium was also for the school's sports teams, particular basketball which was growing in popularity. The auditorium was used by the school and as a community gathering space for town meetings.

Nearly thirty years after its construction, East Haven High School facility reached capacity. As with populations elsewhere in the country, East Haven was experiencing increased enrollments as the first group of the Baby Boomers reached high school age. The town expanded with a twenty-room addition in 1964 to the west. This necessary addition allowed the East Haven High School serve the needs of the community and its students. Less than 10 years later in 1973 the school was expanded again to the east. When a new high school was completed in 1997 on a different site, the East Haven High School closed. Parts of the building such as the gymnasium and pool continue to serve the community.

¹⁷ *The Nation's Schools* p. 48

East Haven High School
Name of Property

New Haven, CT
County and State

9. Major Bibliographical References

Bibliography (Cite the books, articles, and other sources used in preparing this form.)

Caplan, Colin M. *A Guide to Historic New Haven, Connecticut*. Arcadia Publishing, 19 Nov. 2007.

The Code of 1650. Silas Andrus Publishing, Hartford, 1830. p. 90-92
<https://archive.org/stream/codeof165000conn#page/n7/mode/2up>

“Committee Sends School Bids for WPA Approval,” *The Branford Review and East Haven News*. 6 February 1936.

East Haven Yearbook, East Haven, CT, 1937.

Gillis, William E. and R. W. Foote. “Dream Fulfilled.” *The Nation’s Schools*. Vol. 20, No. 3. September 1937.

“Ground Broken for High School in East Haven,” *The Branford Review and East Haven News*. 5 March 1936.

Hill, Everett Gleason. *A Modern History of New Haven and eastern New Haven County*, Volume 1, S. J. Clark, 1918.

Hill, Everett Gleason. *A Modern History of New Haven and eastern New Haven County*, Volume 2, S. J. Clark, 1918.

Hughes, Sarah E. *History of East Haven*. Tuttle, Morehouse and Taylor Press, 1908.

Mead, Arthur Raymond, PhD. *The Development of free schools in the United States as illustrated by Connecticut and Michigan*. Columbia University, 1918.
<https://archive.org/details/developmentoffre01mead>

National Register of Historic Places, Hamden High School, Hamden, New Haven County, Connecticut. National Register #94001378

National Register of Historic Places, Southern New England Telephone Company, New Haven, New Haven County, Connecticut. National Register # 97001447

“Need of New Haven High School Stressed by Supt. Wm. E. Gillis,” *The Branford Review and East Haven News*. 2 March 1933.

“New Haven County Benefits,” *New Haven Evening Register*, 22 October 1936.

East Haven High School
Name of Property

New Haven, CT
County and State

“New School Bids will be opened Thurs. Jan.30” *The Branford Review and East Haven News*,
23 January 1936.

“Program of Studies: 1936-137” East Haven High School, East Haven, Connecticut, 1936.

Sanborn Fire Insurance Maps, 1924, 1950, 1973

East Haven High School
Name of Property

New Haven, CT
County and State

Previous documentation on file (NPS):

- preliminary determination of individual listing (36 CFR 67) has been requested
- previously listed in the National Register
- previously determined eligible by the National Register
- designated a National Historic Landmark
- recorded by Historic American Buildings Survey # _____
- recorded by Historic American Engineering Record # _____
- recorded by Historic American Landscape Survey # _____

Primary location of additional data:

- State Historic Preservation Office
 - Other State agency
 - Federal agency
 - Local government
 - University
 - Other
- Name of repository: _____

Historic Resources Survey Number (if assigned): _____

10. Geographical Data

Acreege of Property 6.5

Use either the UTM system or latitude/longitude coordinates

Latitude/Longitude Coordinates (decimal degrees)

Datum if other than WGS84: _____

(enter coordinates to 6 decimal places)

1. Latitude: _____ Longitude: _____
2. Latitude: _____ Longitude: _____
3. Latitude: _____ Longitude: _____
4. Latitude: _____ Longitude: _____

Or

East Haven High School
Name of Property

New Haven, CT
County and State

UTM References

Datum (indicated on USGS map):

NAD 1927 or NAD 1983

- | | | |
|--------------|-----------------|-------------------|
| 1. Zone: 18T | Easting: 677850 | Northing: 4571436 |
| 2. Zone: | Easting: | Northing: |
| 3. Zone: | Easting: | Northing: |
| 4. Zone: | Easting : | Northing: |

Verbal Boundary Description (Describe the boundaries of the property.)

The boundary of the nominated property is the boundary of the parcel identified as number 180-2313-001 in the Town of East Haven, Connecticut's assessment data and interactive Geographic Information System. This parcel is shown on Figure 2.

Boundary Justification (Explain why the boundaries were selected.)

The boundaries conform to the historical boundaries of the school complex.

11. Form Prepared By

name/title: Emily Dominijanni
organization: MacRostie Historic Advisors
street & number: 313 Washington Street, Suite 308
city or town: Newton state: MA zip code: 02458
e-mail edominijanni@mac-ha.com
telephone: 617-531-7159
date: August 2019

Additional Documentation

Submit the following items with the completed form:

- **Maps:** A **USGS map** or equivalent (7.5 or 15 minute series) indicating the property's location.
- **Sketch map** for historic districts and properties having large acreage or numerous resources. Key all photographs to this map.

East Haven High School
Name of Property

New Haven, CT
County and State

- **Additional items:** (Check with the SHPO, TPO, or FPO for any additional items.)

Photographs

Submit clear and descriptive photographs. The size of each image must be 1600x1200 pixels (minimum), 3000x2000 preferred, at 300 ppi (pixels per inch) or larger. Key all photographs to the sketch map. Each photograph must be numbered and that number must correspond to the photograph number on the photo log. For simplicity, the name of the photographer, photo date, etc. may be listed once on the photograph log and doesn't need to be labeled on every photograph.

Photo Log

Name of Property: East Haven High School

City or Vicinity: East Haven

County: New Haven County

State: Connecticut

Photographer: Mary Nastasi

Date Photographed: August 2017

Description of Photograph(s) and number, include description of view indicating direction of camera:

- 1 of 27. Facing south toward the north elevation of the 1936 building.
- 2 of 27. Facing south toward the north elevation of the 1936 building.
- 3 of 27. Facing southwest toward the north elevation of the 1936 building.
- 4 of 27. Facing southeast toward the north elevation of the 1973 addition.
- 5 of 27. Facing south toward the north elevation of the 1964 addition.
- 6 of 27. Facing southeast toward the west elevation of the 1964 addition.
- 7 of 27. Facing southeast toward the north elevation of the pool addition.
- 8 of 27. Facing southwest toward the west elevation of the bridge connector.
- 9 of 27. Facing north toward the west elevation of the 1964 building (left) and the south elevation of the 1936 building.
- 10 of 27. Facing northeast toward the south elevation of the pool addition.
- 11 of 27. Facing northeast toward the south elevation of the pool addition.
- 12 of 27. Facing north toward the south elevation of the pool addition (left), gymnasium and wings (center), and 1973 addition (right).
- 13 of 27. Facing northwest toward gymnasium wing addition (left), auditorium (center), south elevation of the 1936 building (right).
- 14 of 27. Facing northwest toward the east elevation of the auditorium section.
- 15 of 27. Facing southeast toward one-story 1973 garage.
- 16 of 27. Facing west down the first-floor corridor of the 1936 building.
- 17 of 27. Facing east in a first-floor classroom of the 1936 building.

East Haven High School

Name of Property

New Haven, CT

County and State

- 18 of 27. Facing north in the auditorium of the 1936 building.
- 19 of 27. Facing southeast in the gymnasium of the 1936 building
- 20 of 27. Facing west into classroom space of the 1936 building.
- 21 of 27. Facing northwest into a second-floor classroom of the 1936 building.
- 22 of 27. Facing east down first-floor connector corridor of the 1964 addition.
- 23 of 27. Facing west into first-floor classroom space of the 1964 addition.
- 24 of 27. Facing east toward second-floor stair in the 1964 addition.
- 25 of 27. Facing south down the second-floor corridor of the 1973 addition.
- 26 of 27. Facing southeast into a second-floor classroom of the 1973 addition.
- 27 of 27. Facing southwest toward pool in the 1973 pool addition.

East Haven High School
Name of Property

New Haven, CT
County and State

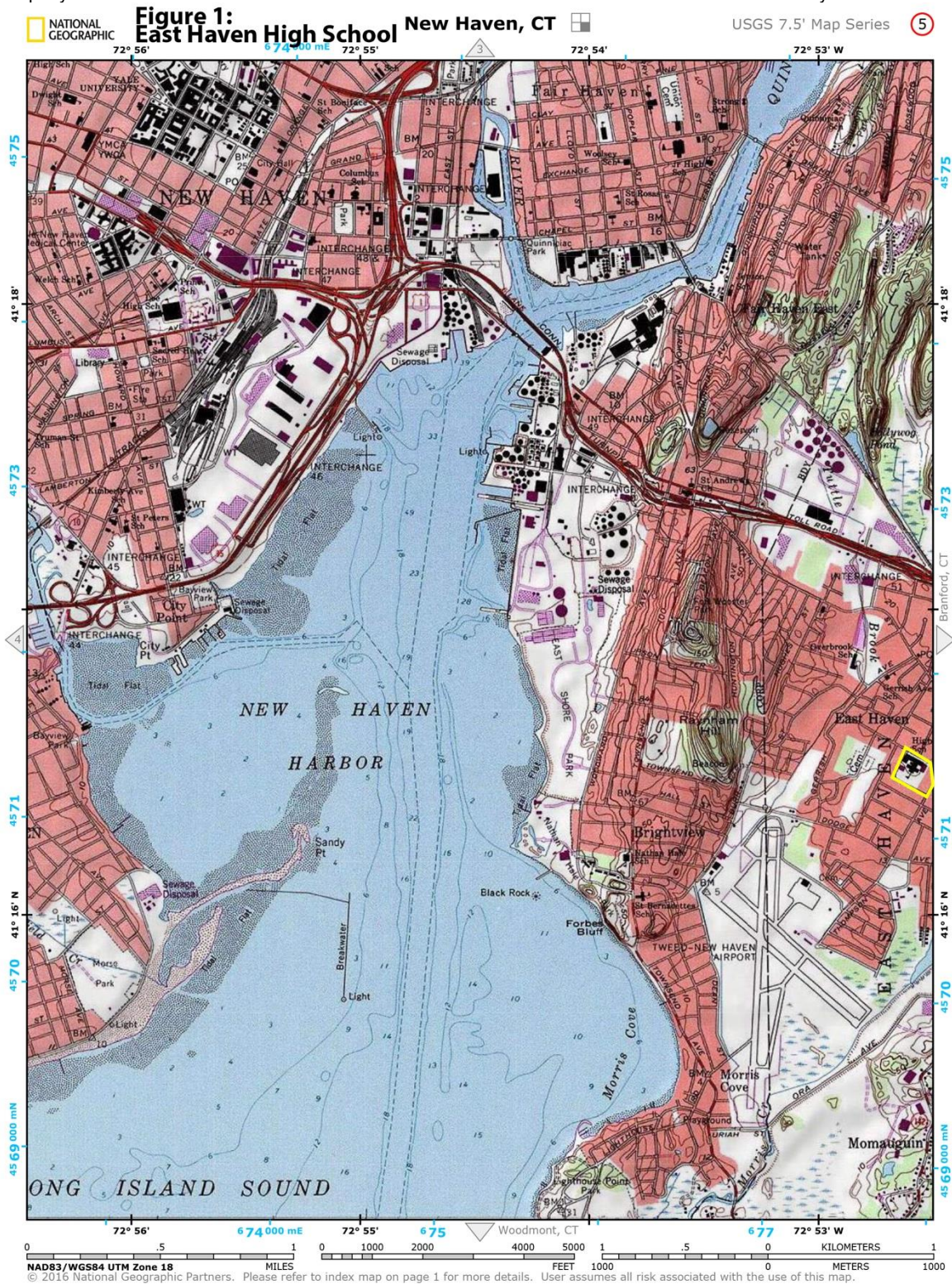


Figure 1: Location Map, USGS 7.5 Minute Map

East Haven High School
Name of Property

New Haven, CT
County and State

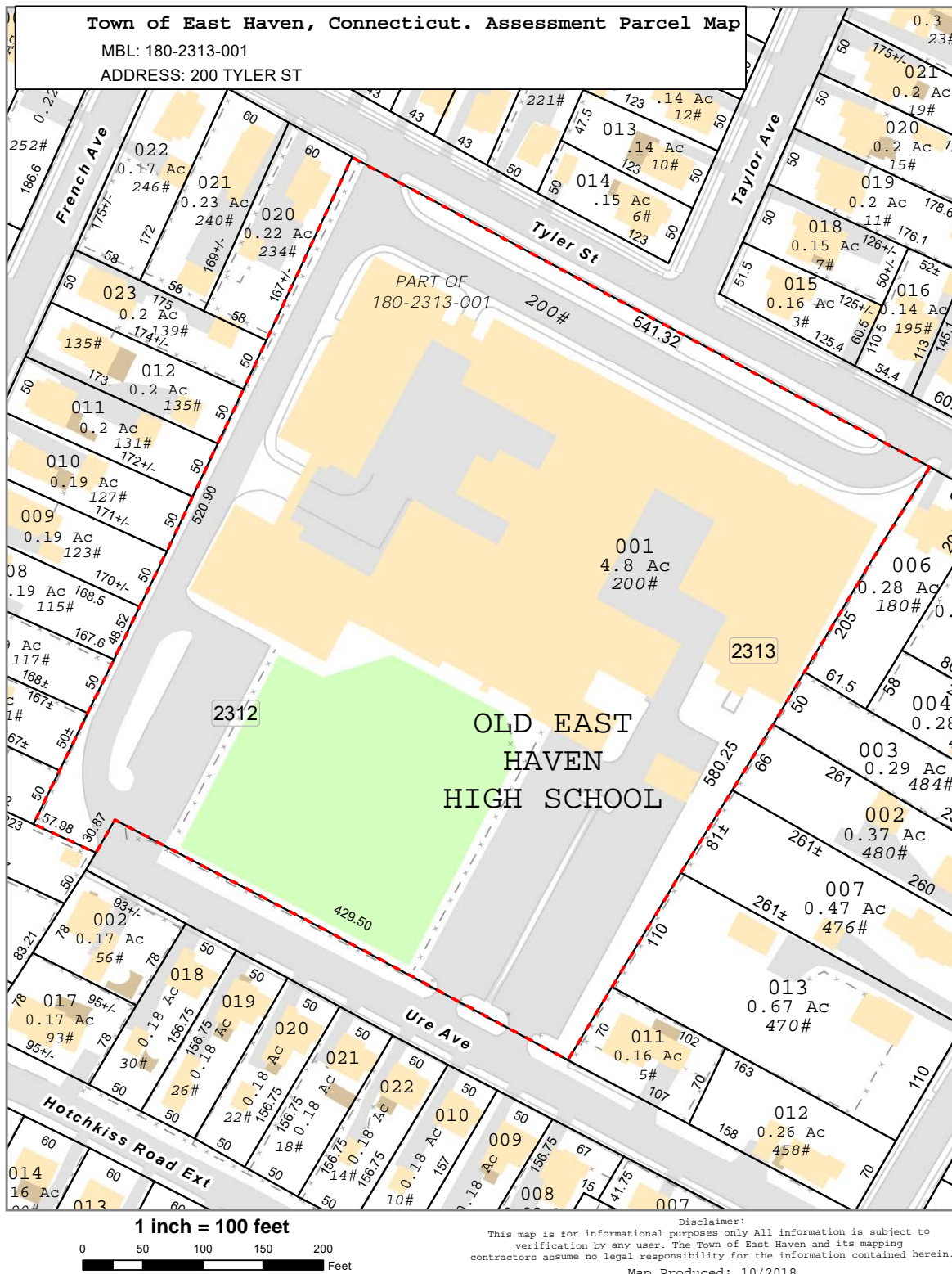


Figure 2 of 8: Parcel Map, East Haven assessor's office.

East Haven High School
Name of Property

New Haven, CT
County and State



Figure 3: East Haven High School Year Book, 1937.

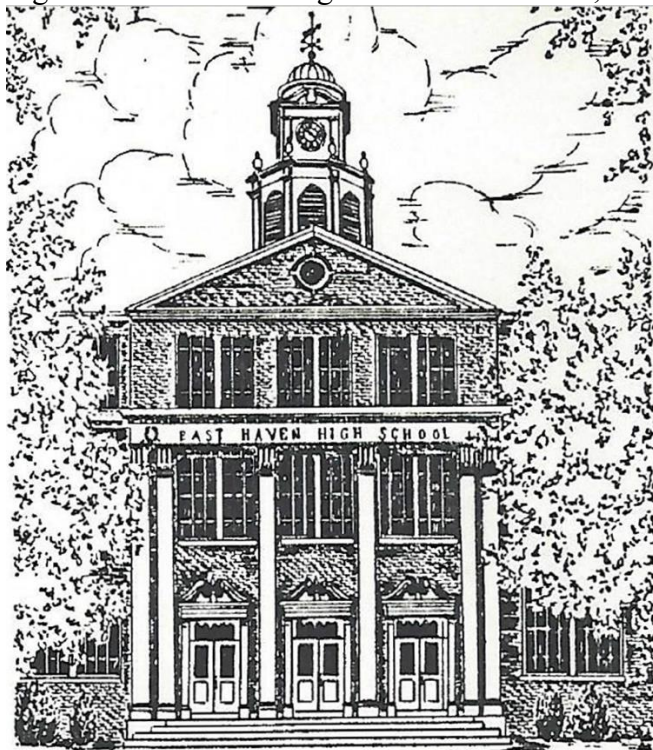


Figure 4: Exterior sketch from Gillis, William E. and R. W. Foote. "Dream Fulfilled." *The Nation's Schools*. Vol. 20, No. 3. September 1937.

East Haven High School
Name of Property

New Haven, CT
County and State

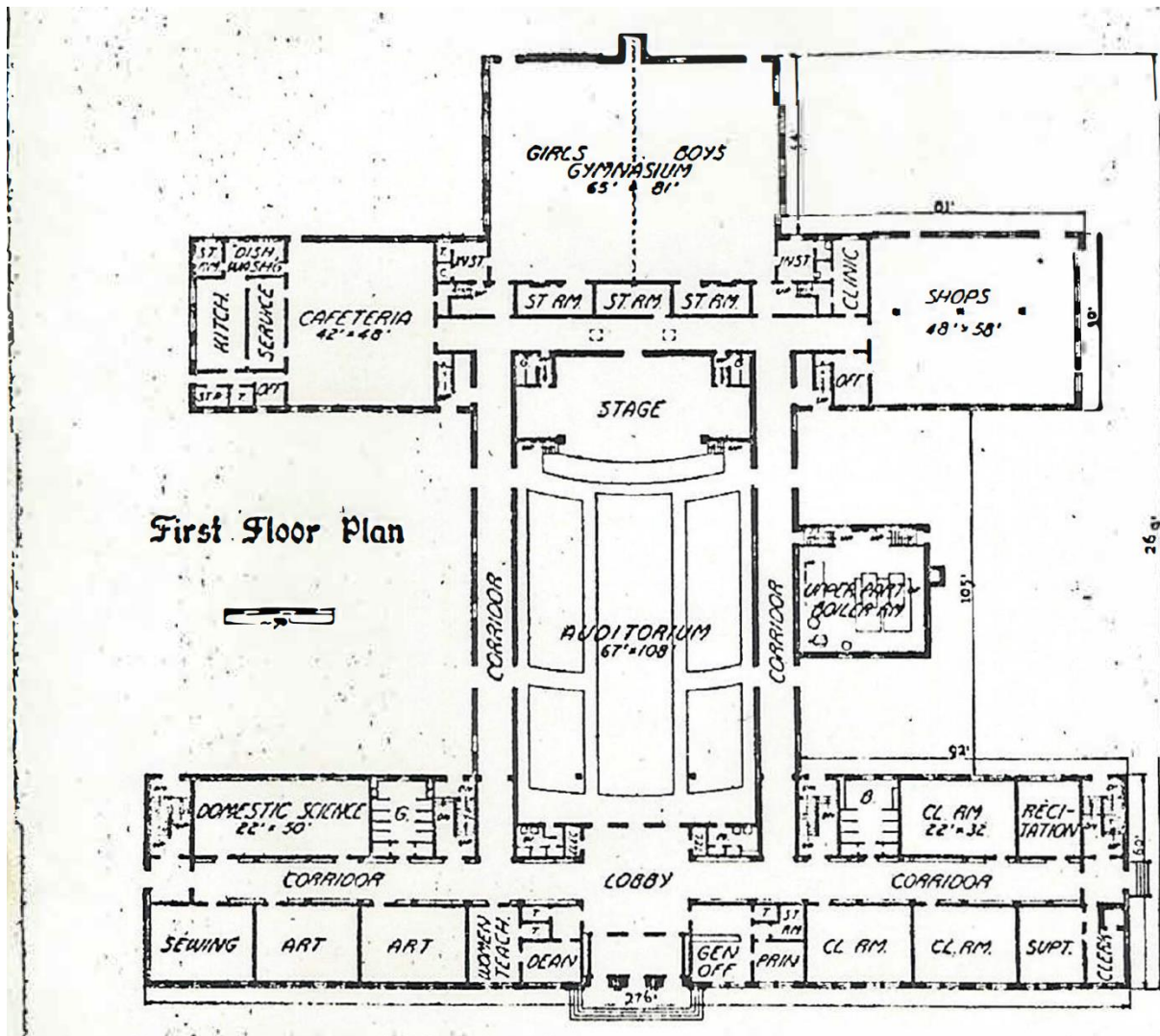


Figure 5: First floor plan from Gillis, William E. and R. W. Foote. "Dream Fulfilled." *The Nation's Schools*. Vol. 20, No. 3. September 1937.

East Haven High School
Name of Property

New Haven, CT
County and State

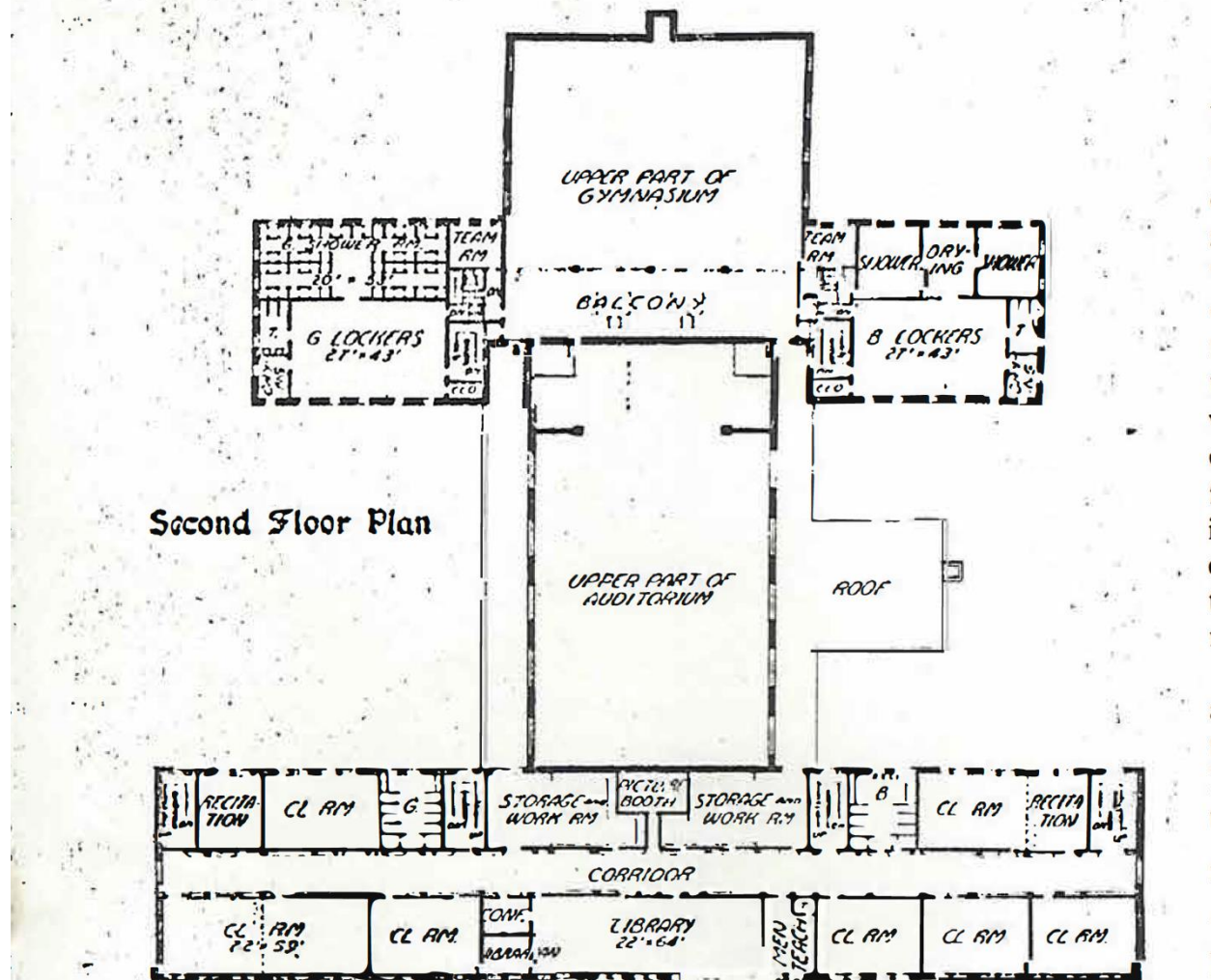


Figure 6: Second floor plan from Gillis, William E. and R. W. Foote. "Dream Fulfilled." *The Nation's Schools*. Vol. 20, No. 3. September 1937.

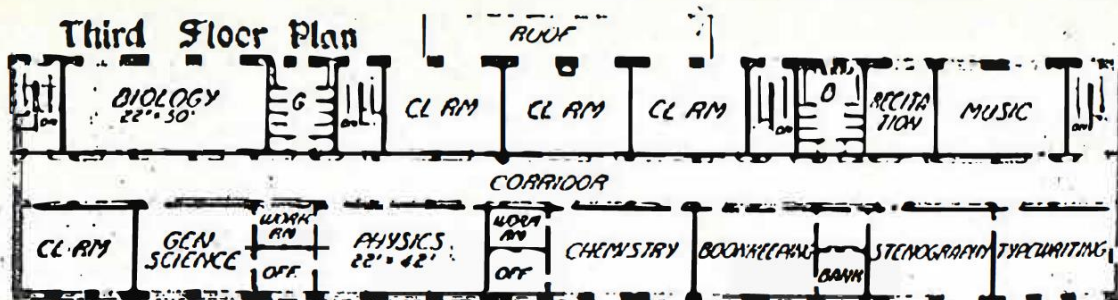


Figure 7: Third floor plan from Gillis, William E. and R. W. Foote. "Dream Fulfilled." *The Nation's Schools*. Vol. 20, No. 3. September 1937.

East Haven High School
 Name of Property

New Haven, CT
 County and State

EAST HAVEN HIGH SCHOOL CURRICULA

| | PREPARATORY CURRICULUM | COMMERCIAL CURRICULUM | CIVIC CURRICULUM | | PREPARATORY CURRICULUM | COMMERCIAL CURRICULUM | CIVIC CURRICULUM |
|-----------------------|--|--|---|-------------------------|---|---|---|
| First Year — Grade IX | Required English I Algebra I Physical Education Music C I | Required English I Civics Business Practice Physical Education Music C I | Required English I Social Science I Physical Education Home Making or Industrial Arts Music C I | Third Year — Grade XI | Required English III American History Physical Education Music C 3 | Required English III American History Stenography I Typewriting I Physical Education Music C 3 | Required English III American History Physical Education Music C 3 |
| | Elect Two Latin I Ancient History General Science Art | Elect One General Science Art Home Making Industrial Arts | Elect One or Two General Science General Mathematics | | Elect Two Latin III French II German II Physics Plane Geometry ½ Solid Geometry ½ | Elect One or Two Bookkeeping II Advertising and Selling Economic Geography | Elect Two or Three Industrial Arts Home Making Art Music I 3 Typewriting |
| Second Year — Grade X | Required English II Physical Education Music C 2 | Required English II Biology Bookkeeping I Physical Education Music C 2 | Required English II Social Science II Home Making or Industrial Art Physical Education Music C 2 | Fourth Year — Grade XII | Required English IV Problems of Democracy Physical Education Music C 4 | Required English IV Stenography II Problems of Democracy Physical Education Music | Required English IV Problems of Democracy Physical Education Music C 4 |
| | Elect Three Algebra II ½ Plane Geometry ½ Latin II Biology Modern History French I German I Art | Elect One Home Making Art World History | Elect One or Two Biology Business Practice Typewriting Music I 2 Art | | Elect Two or Three Chemistry Latin IV French III German III Trigonometry ½ Math. Review ½ Music A 4 | Elect One or Two Typewriting II Commercial Law ½ Economics ½ Office Practice Business Principles | Elect Two or Three Industrial Arts Home Making Art Music I 4 Typewriting Business Principles |

Figure 8: Program Catalog, East Haven High School 1936-1937.

Paperwork Reduction Act Statement: This information is being collected for applications to the National Register of Historic Places to nominate properties for listing or determine eligibility for listing, to list properties, and to amend existing listings. Response to this request is required to obtain a benefit in accordance with the National Historic Preservation Act, as amended (16 U.S.C.460 et seq.).

Estimated Burden Statement: Public reporting burden for this form is estimated to average 100 hours per response including time for reviewing instructions, gathering and maintaining data, and completing and reviewing the form. Direct comments regarding this burden estimate or any aspect of this form to the Office of Planning and Performance Management, U.S. Dept. of the Interior, 1849 C. Street, NW, Washington, DC.

National Park Service
National Register Nomination Photos
East Haven High School - East Haven, CT



1. Facing south toward the north elevation of the 1936 Building



2. Facing south toward the north elevation of the 1936 Building

National Park Service
National Register Nomination Photos
East Haven High School - East Haven, CT



3. Facing southwest toward the north elevation of the 1936 Building



4. Facing southeast toward the north elevation of the 1973 addition

National Park Service
National Register Nomination Photos
East Haven High School - East Haven, CT



5. Facing south toward the north elevation of the 1964 addition



6. Facing southeast toward the west elevation of the 1964 addition

National Park Service
National Register Nomination Photos
East Haven High School - East Haven, CT



7. Facing southeast toward the north elevation of the pool addition



8. Facing southwest toward the west elevation of the bridge connector

National Park Service
National Register Nomination Photos
East Haven High School - East Haven, CT



9. Facing north toward the west elevation of the 1964 Building (left) and the south elevation of the 1936 Building



10. Facing northeast toward the south elevation of the pool addition

National Park Service
National Register Nomination Photos
East Haven High School - East Haven, CT



11. Facing northeast toward the south elevation of the pool addition



12. Facing north toward the south elevation of the pool addition (left), gymnasium and wings (center), and 1973 addition (right)

National Park Service
National Register Nomination Photos
East Haven High School - East Haven, CT



13. Facing northwest toward gymnasium wing addition (left), auditorium (center), south elevation of the 1936 building (right)



14. Facing northwest toward the east elevation of the auditorium section

National Park Service
National Register Nomination Photos
East Haven High School - East Haven, CT



15. Facing southeast toward one-story 1973 garage



16. Facing west down the first-floor corridor of the 1936 Building

National Park Service
National Register Nomination Photos
East Haven High School - East Haven, CT

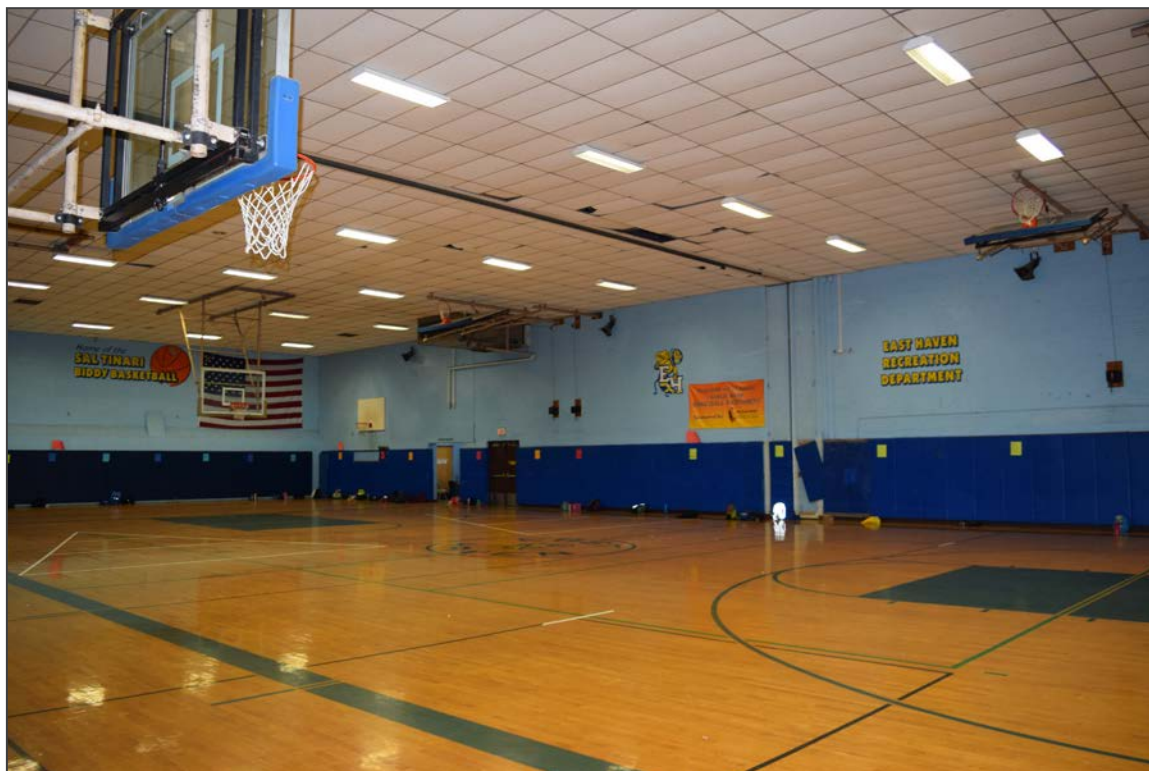


17. Facing east in a first-floor classroom of the 1936 Building



18. Facing north in the auditorium of the 1936 Building

National Park Service
National Register Nomination Photos
East Haven High School - East Haven, CT



19. Facing southeast in the gymnasium of the 1936 Building



20. Facing west into classroom space of the 1936 Building

National Park Service
National Register Nomination Photos
East Haven High School - East Haven, CT



21. Facing northwest into a second-floor classroom of the 1936 Building



22. Facing east down first-floor connector corridor of the 1964 addition

National Park Service
National Register Nomination Photos
East Haven High School - East Haven, CT



23. Facing west into first-floor classroom space of the 1964 addition



24. Facing east toward second-floor stair in the 1964 addition

National Park Service
National Register Nomination Photos
East Haven High School - East Haven, CT



25. Facing south down the second-floor corridor of the 1973 addition



26. Facing southeast into a second-floor classroom of the 1973 addition

National Park Service
National Register Nomination Photos
East Haven High School - East Haven, CT



27. Facing southwest toward pool in the 1973 pool addition