

DPH COVID-19 Municipal/ Local Health Department Webinar

CONNECTICUT DEPARTMENT OF PUBLIC HEALTH

WEDNESDAY, MARCH 17, 2021

5:00 – 6:00 PM



Agenda & Commissioner's Message

- ▶ Welcome
- ▶ Department of Public Health Commissioner Gifford
 - ▶ Vaccine Update
 - ▶ Variant Status
- ▶ COVID-19 Case Rate Trends
- ▶ Sector Rule Changes Effective March 19th
- ▶ Mitigation
- ▶ Q&A Session



Social Vulnerability Index (SVI)

Cumulative Number and Percent of People who Received At Least One Dose of COVID-19 Vaccination and who are Fully Vaccinated by Residence in CT Priority Zip Codes – Data as of March 8, 2021

Category	Population	At Least One Dose		Fully Vaccinated	
		Number	Percent	Number	Percent
Priority Zip Codes	1146238	162143	14.15%	82776	7.22%
Other Zip Codes	2485232	594624	23.93%	309936	12.47%
Resident out of state		21224		14073	
Address pending validation		12301		6372	
Total	3631470	790292	21.76%	413157	11.38%

March 11, 2017 report

All data provisional and subject to change – Old reporting system

VACCINE

Presenter:

Benjamin Bechtolsheim
Director, Vaccination Program
Connecticut Department of Public Health



Vaccine

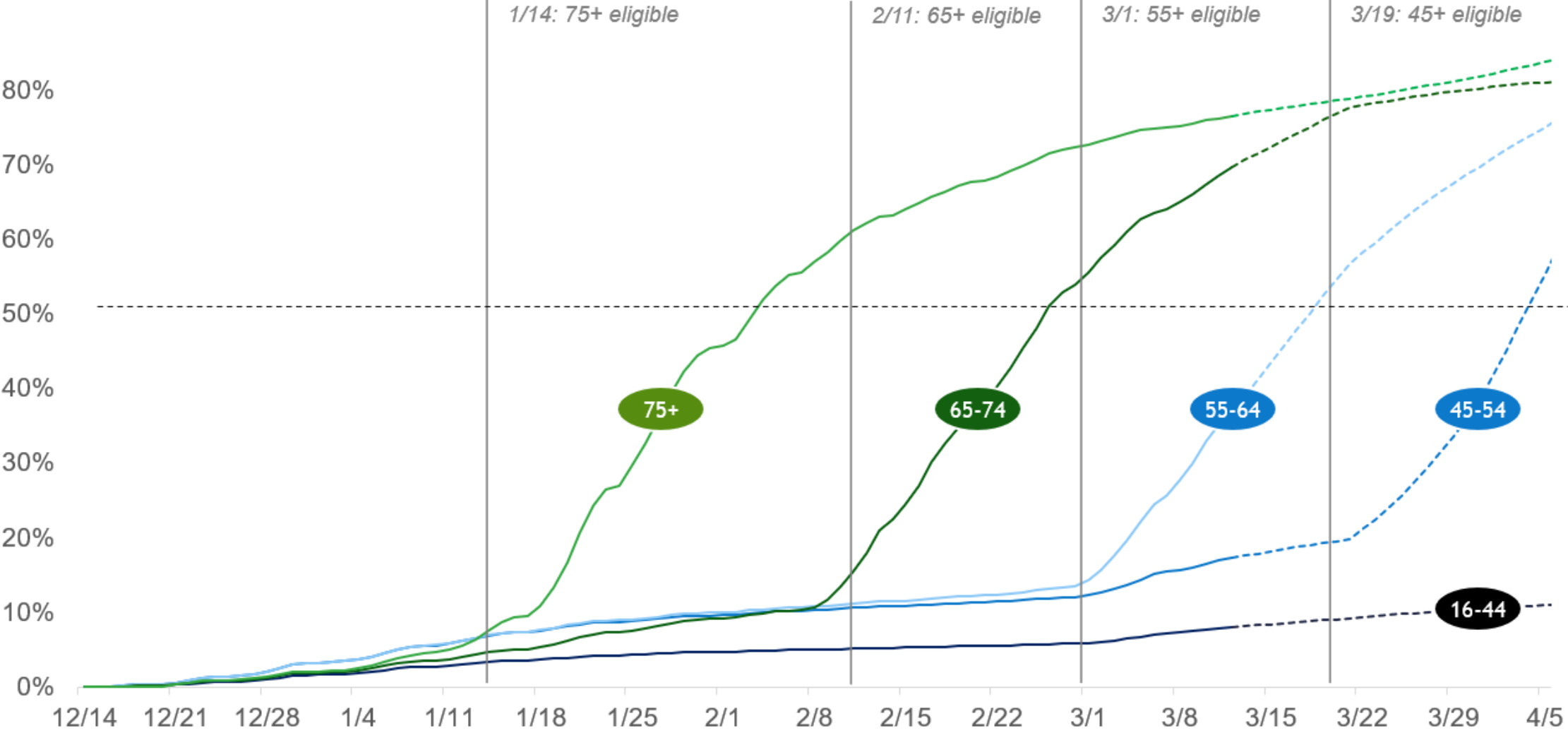
Key highlights:

- ▶ 77% of 75+ vaccinated
- ▶ 75% of 65+ vaccinated
- ▶ 1.4 Million doses administered
- ▶ New daily record: 40,000 doses administered on March 10

Key updates:

- ▶ **Accelerated roll-out:** 45+ launch this Friday and general availability tentatively scheduled for April 5
- ▶ **Stop & Shop launching** with J&J this week across the State
- ▶ **ct.gov/Covidvaccine** has an improved vaccine locator tool
- ▶ **Education & childcare** on pace to wrap up at the end of this month

Coverage by age bracket



STATE OF CONNECTICUT: WEEKLY COVID-19 TRENDS REPORT

Presenters:

Matt Cartter, MD
State Epidemiologist & Director of Infectious Diseases
Connecticut Department of Public Health

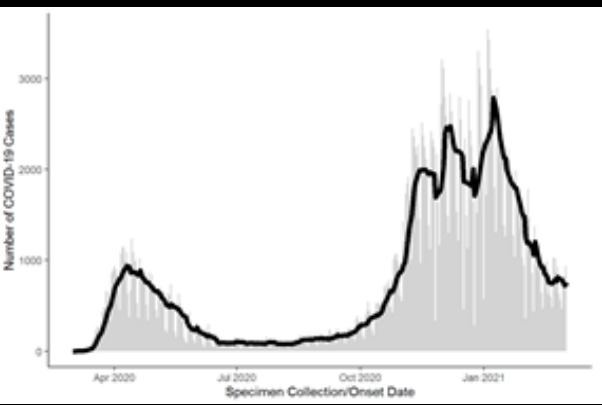


*Data for this week are incomplete

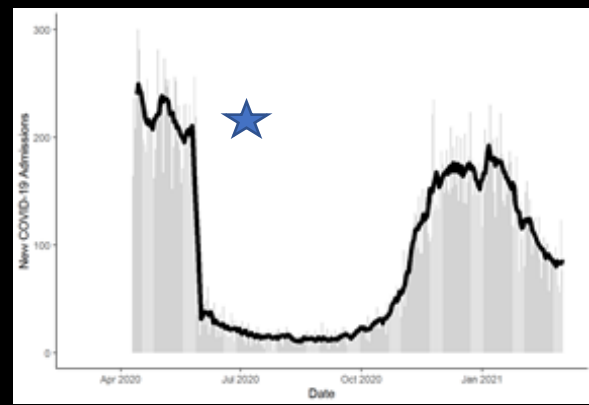
Big Picture: Statewide Snapshot

March 1, 2020 – March 13, 2021

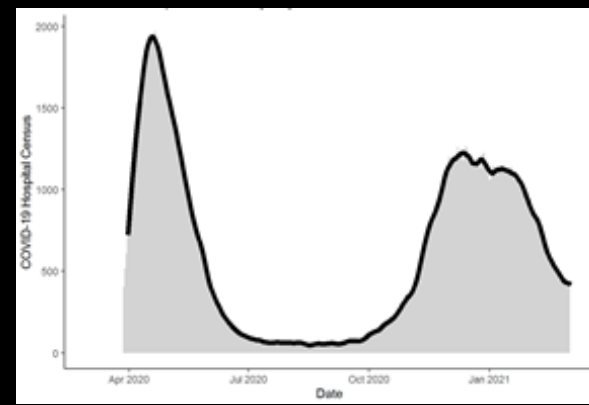
Cases



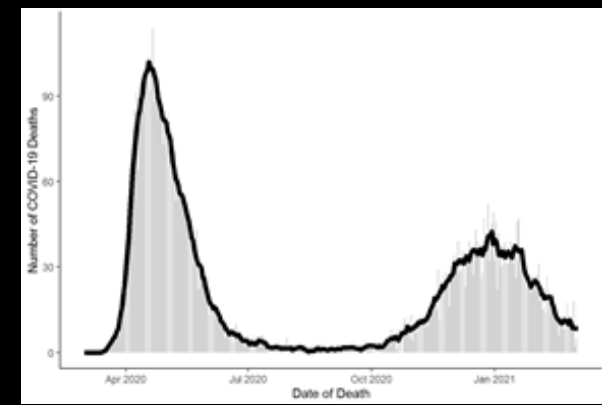
New Admissions



Hospital Census



Deaths



Total Cases

289,392

Total Hospitalizations

30,339

Hospital Census (2/24)

383

Total Deaths

7,761

3/7 - 3/13*	1,423
2/28 - 3/6	5,063
2/21 - 2/27	5,529

3/7 - 3/13*	321
2/28 - 3/6	592
2/21 - 2/27	586

3/7 - 3/13*	391
2/28 - 3/6	423
2/21 - 2/27	472

3/7 - 3/13*	19
2/28 - 3/6	59
2/21 - 2/27	75

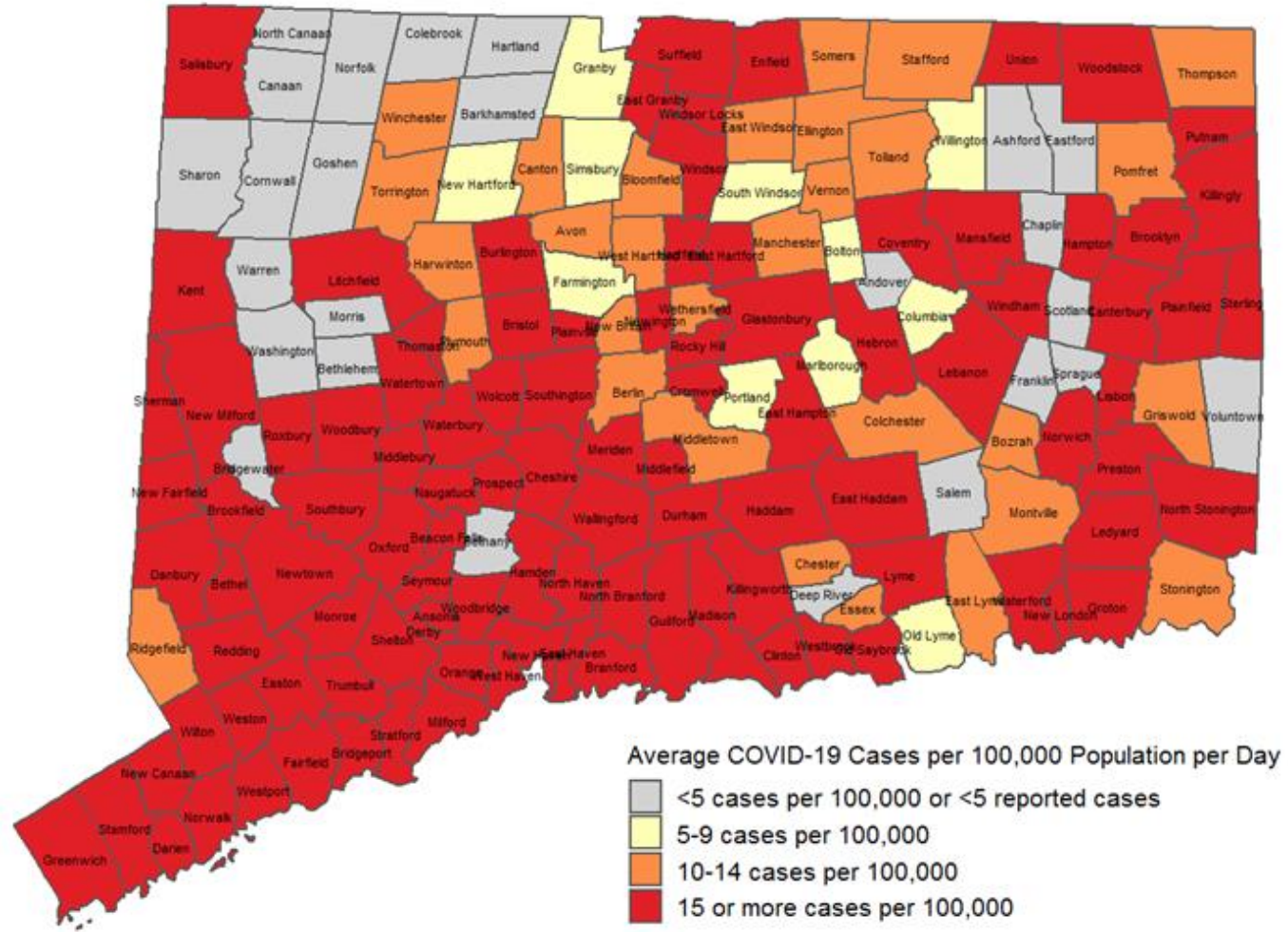
★ Note: Prior to 5/29, CHA defined “COVID admissions” as suspected + confirmed; after 5/29, confirmed only

Alert Categories, by Town

February 21 – March 6,
2021

Town Alert Category	Percentage of CT Population
Red	77%
Orange	18%
Yellow	4%
Grey	2%

Average Daily Rate of COVID-19 Cases among People Living in Community Settings per 100,000 Population by Town with Specimen Collection or Onset Date During February 21-March 06



SARS-CoV-2 Variants

United States

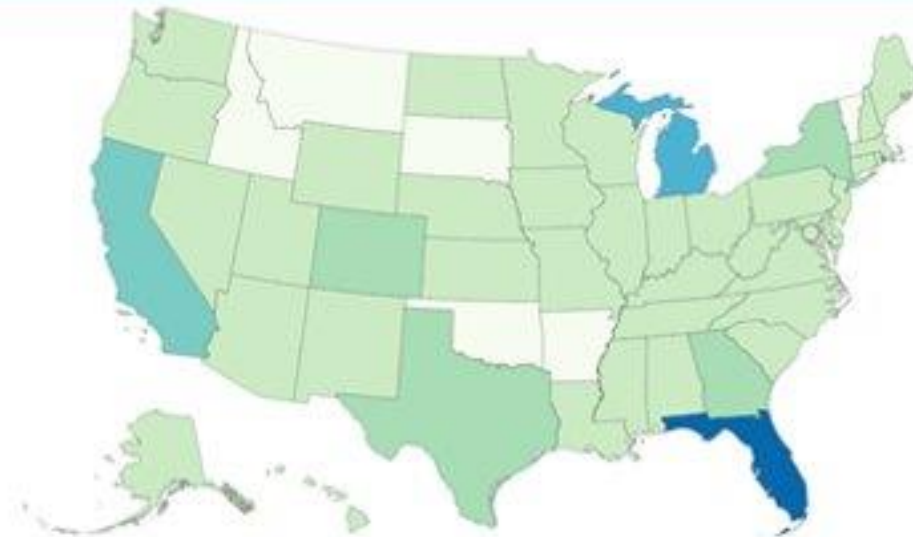
10

Connecticut

- B.1.1.7 (UK): 174
- B.1.351 (South Africa): 6

Variant	Reported Cases in US	Number of Jurisdictions Reporting
B.1.1.7	2506	46
B.1.351	65	17
P.1	10	5

Emerging Variant Cases in the United States**



Number of Cases



Filters

Variant B.1.1.7 ▼

SECTOR RULE CHANGES

Presenter:

Kyle Abercrombie, MPA
Director of Government Affairs
Department of Economic and Community Development



DECD Updates

- ▶ Effective this **Friday, March 19**
 - ▶ All Businesses
 - ▶ Up to 100% capacity (owners/operators can choose to operate at less than 100%)
 - ▶ 6 ft. social distancing and masks required unless eating or drinking
 - ▶ Must follow CDC cleaning and disinfecting guidelines
 - ▶ Sports and Gyms/Fitness Centers
 - ▶ Youth and amateur sports must follow DPH guidance
 - ▶ Restaurants and Indoor Recreation
 - ▶ 11:00 PM closing time still in place
 - ▶ 8-person limit per table
 - ▶ Bars and establishments that only serve beverages are still closed
 - ▶ Indoor musical performers and vocalists now allowed



DECD Updates

Effective Friday,
March 19

➤ Gatherings

Type	Capacity Limits
Private, Social and Recreational Gatherings at Commercial Venue	Indoor – Up to 50% capacity – Cap of 100 people Outdoor – Cap of 200 people
Private, Social and Recreational Gatherings at Private Residences	Indoor – Cap of 25 people Outdoor – Cap of 100 people

DECD Updates

Effective Friday,
March 19

➤ Gatherings

Type	Capacity Limits
Graduations Fairs, Festivals, and Carnivals	Indoor – Up to 50% capacity – Cap of 100 people Outdoor – Limited by masks and social distancing. Up to 50% of last year's capacity.
Outdoor Organized Gatherings that are Open to the Public (e.g. Fireworks, Concert in Municipal Park)	Cap of 500 people. 6 ft. of space blanket to blanket. Event organizer responsible for compliance with guidance.

DECD Updates

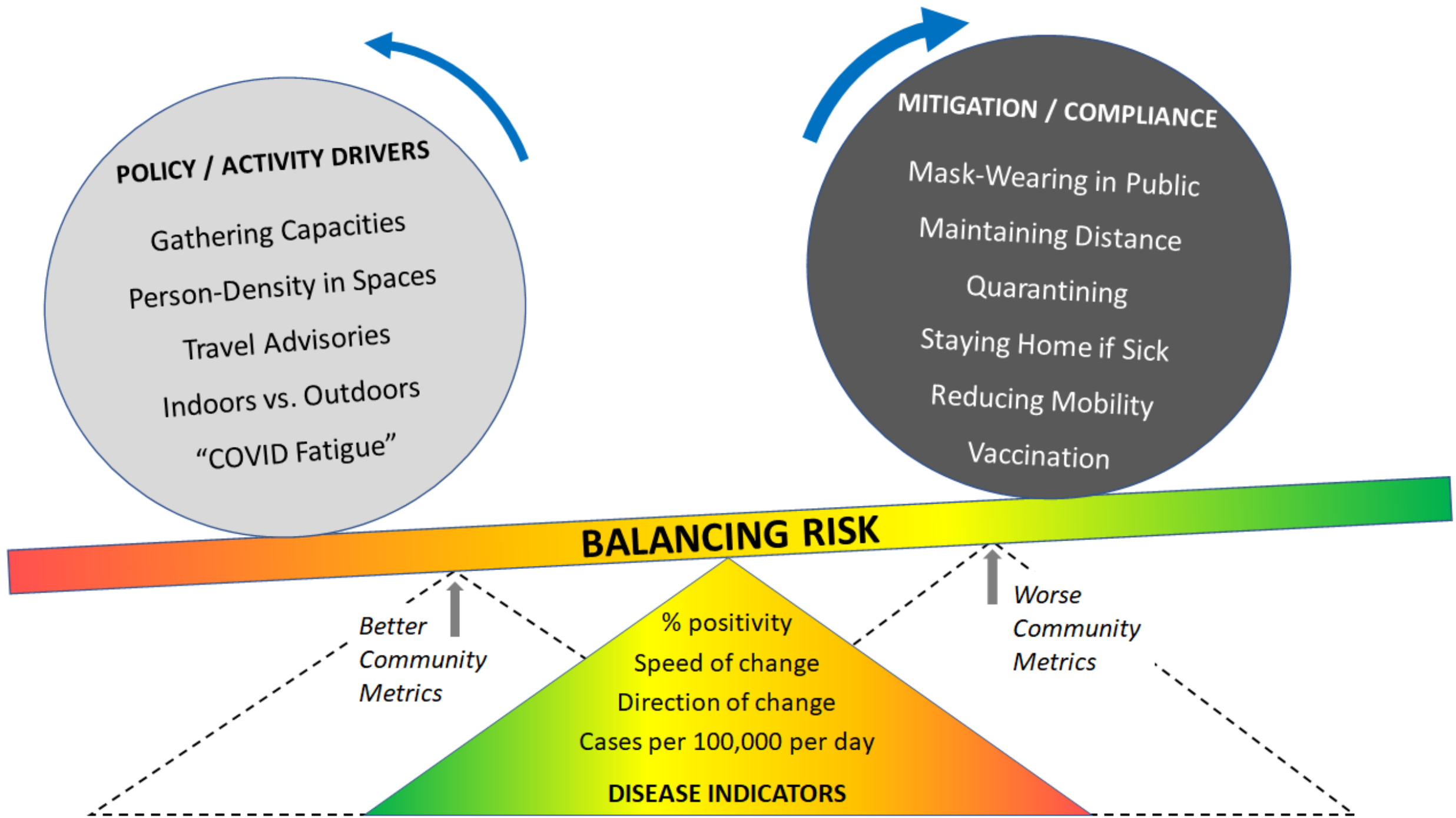
- ▶ Effective **Friday, April 2**
 - ▶ Outdoor amusement parks can open with no capacity limits
 - ▶ Outdoor event venues can increase to a 50% capacity, capped at 10,000 people
 - ▶ Indoor stadiums can open at 10% capacity

MITIGATION STRATEGIES UPDATE

Presenter:

Tom St. Louis, MSPH
Epidemiologist
Connecticut Department of Public Health





Questions & Answers

COVID19.DPH@ct.gov





THANK YOU!