

DPH COVID-19 Municipal/ Local Health Department Webinar

Stay the Course in Connecticut

CONNECTICUT DEPARTMENT OF PUBLIC HEALTH

WEDNESDAY, MARCH 3, 2021

5:00 – 6:00 PM



COVID-19 MESSAGE

Commissioner Deidre Gifford, MD, MPH
Acting Commissioner Department of Public Health
Commissioner Department of Social Services



Agenda & Message

- ▶ Welcome
- ▶ Department of Public Health Commissioner Gifford Message
 - ▶ Mitigation Layers, Variants, Benjamin for vaccine update
- ▶ COVID-19 Case Rate Trends
- ▶ Mitigation
- ▶ Q&A Session

VACCINE

Benjamin Bechtolsheim
Director, Vaccination Program
Connecticut Department of Public Health



Vaccine

Key highlights:

- ▶ 66% of 75+ vaccinated
- ▶ 23% of 65-74 vaccinated
- ▶ New daily record: 28k doses administered Friday, Feb 12
- ▶ 692,000 total doses administered as of Monday
- ▶ 22% total increase in supply next week

Next phase:

- ▶ **Current planning for next phase: Schools and Childcare**

STATE OF CONNECTICUT: WEEKLY COVID-19 TRENDS REPORT

Presenters:

Matt Cartter, MD
State Epidemiologist & Director of Infectious Diseases
Connecticut Department of Public Health

&

Lynn Sosa, MD
Deputy State Epidemiologist, TB/STD Control Programs Medical Director
Connecticut Department of Public Health

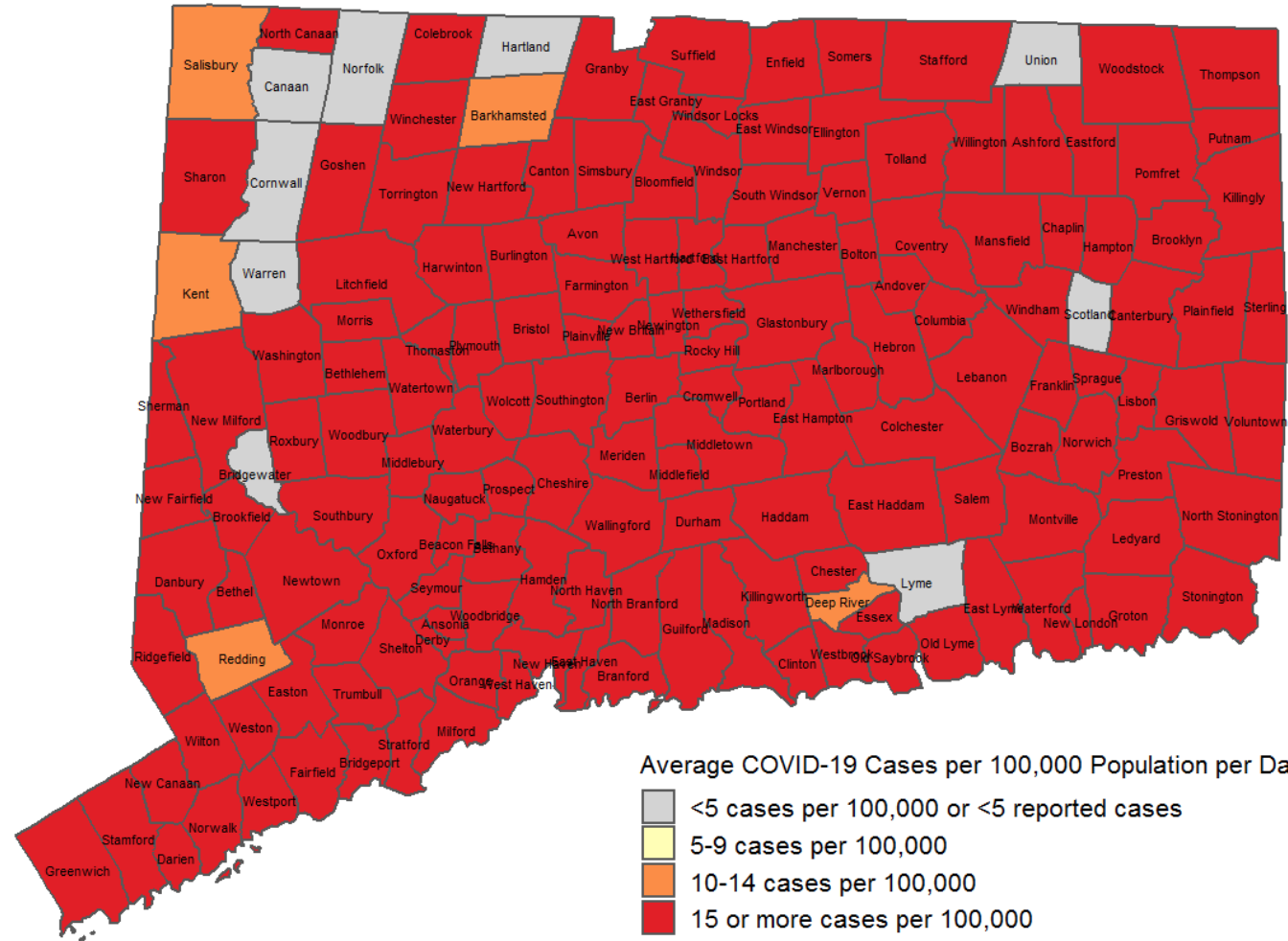


Alert Categories, by Town

January 24 – February 6,
2021

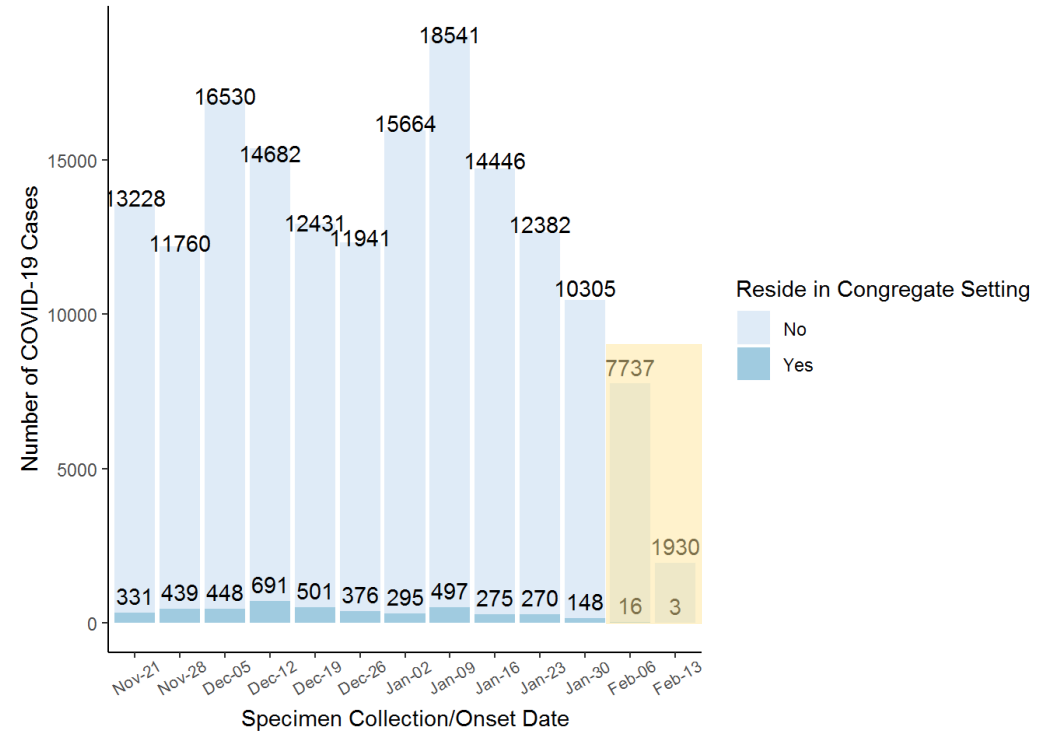
Town Alert Category	Percentage of CT Population
Red	99%
Orange	<1%
Yellow	0%
Grey	<1%

Average Daily Rate of COVID-19 Cases among People Living in Community Settings
per 100,000 Population by Town
with Specimen Collection or Onset Date During January 24-February 06



Recent Cases & Incidence, Statewide

November 15, 2020 – February 13, 2021

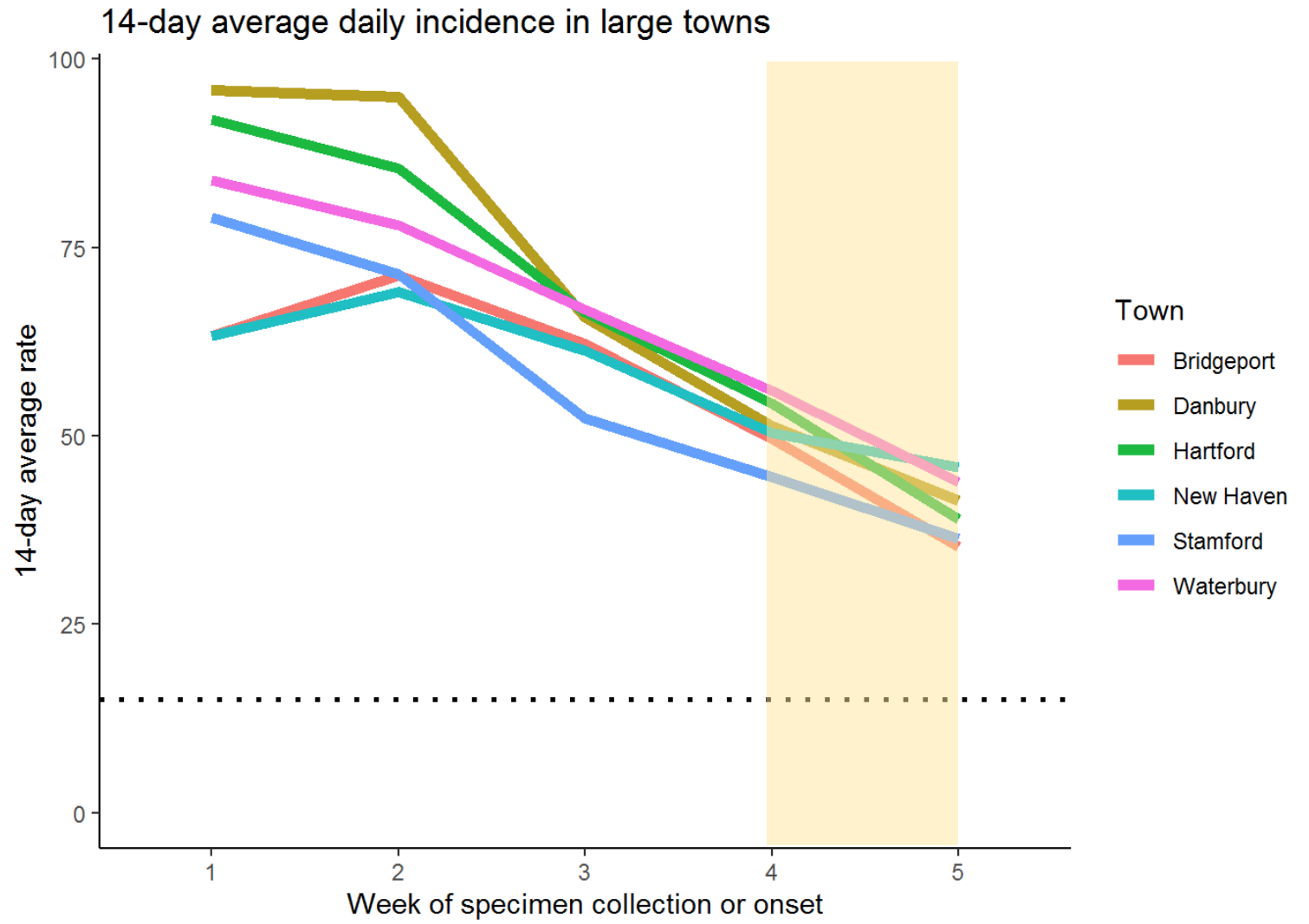


Two Week Period	# New Cases	Average Daily Incidence / 100,000
1/31 - 2/13*	9,667	--
1/24 - 2/6	18,042	36.1
1/17 - 1/30	22,687	45.4
1/10 - 1/23	26,828	53.6
1/3 - 1/16	32,987	66.0
12/27 - 1/9	34,205	68.4

*Data for this period are incomplete

*Data for this period are incomplete

Incidence in Large Towns, January 3 – February 6, 2021



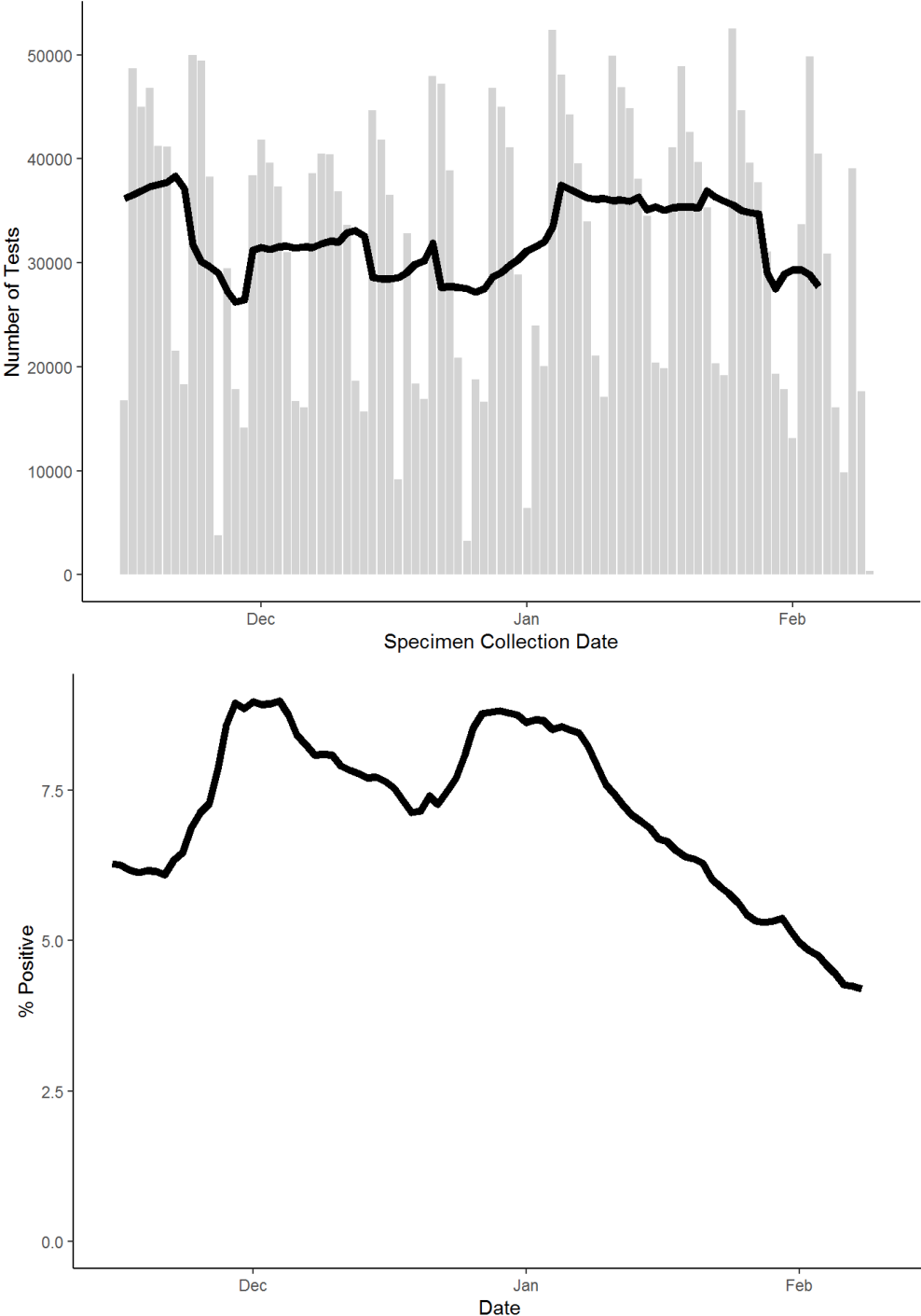
*Data for this week are incomplete

Community Testing (Non-congregate), All Tests

November 15, 2020 – February 13, 2021

2/7 - 2/13*	66,859 tests
1/31 - 2/6	202,024 tests
1/24 - 1/30	244,132 tests

Note: Positivity = # positive / (# positive + # negative) by specimen collection date



ENVIRONMENTAL HEALTH UPDATE

Presenter:

Tom St. Louis, MSPH
Epidemiologist
Connecticut Department of Public Health



Should We All Start Double Masking?

- ▶ **CDC update goes beyond just “wear a mask” to clarify:**
 - ▶ Individuals should wear a mask that completely covers the nose and mouth and fits snugly on the face without gaps
 - ▶ Masks that fit better work better *(for source control and filtering)*
 - ▶ Multiple layers work better than single layers
 - ▶ Strategies/features that may help achieve a good fit include:
 - ▶ Choosing masks with a **metal nose clip** help form a seal over the nose
 - ▶ **Tie ear loops** on masks and **tuck-in** excess material (*“tying and tucking”*)
 - ▶ Wearing a **second mask** or gaiter over a poorly fitting disposable mask (*“double masking”*)

Questions & Answers

COVID19.DPH@ct.gov





THANK YOU!

Next DPH meeting:

March 3, 2021
5:00 pm