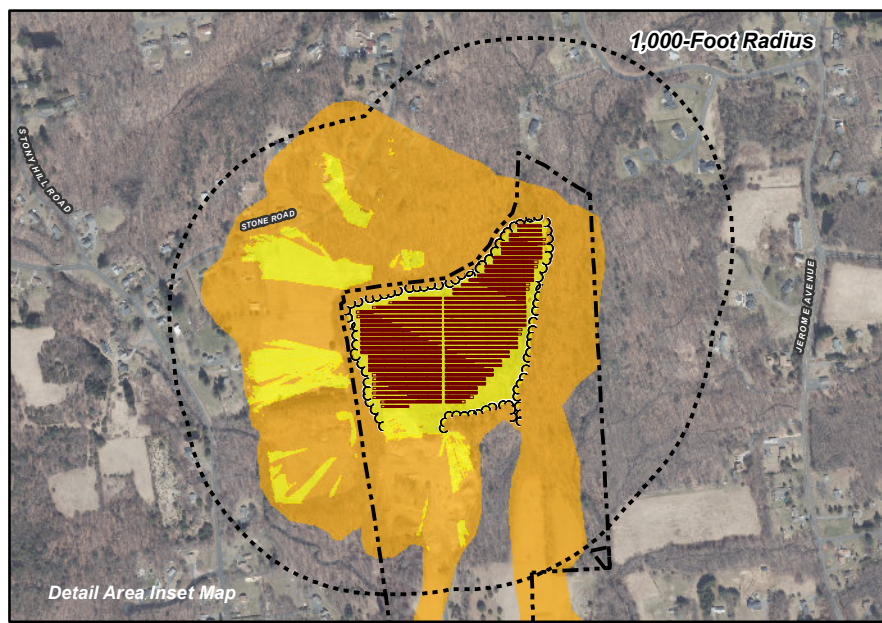


Statewide and Regional Overview Map



Detail Area Inset Map

### Viewshed Analysis Map

Proposed Solar Facility  
 Burlington Solar One  
 85 Prospect Street  
 Burlington, Connecticut

Proposed solar panels to be mounted on approximate 10' AGL support structures. Forest canopy height and topographic contours are derived from LiDAR data. Study area encompasses a 1-mile radius and includes 2,412 acres. Base Map Source: 2019 Aerial Photograph (CTECO) Map Date: September 2020

#### Legend

- Site
- Solar Modules
- Treeline (Clearing Limit)
- Study Area (1-Mile Radius)
- Predicted Year-Round Visibility (24 Acres)
- Areas of Potential Seasonal Visibility (69 Acres)
- Municipal Boundary
- Trail
- Scenic Highway
- DEEP Boat Launches
- Municipal and Private Open Space Property
- State Forest/Park
- Protected Open Space Property**
- Federal
- Land Trust
- Municipal
- Private
- State

#### Data Sources:

**Physical Geography / Background Data**  
 A digital surface model (DSM) was created from the State of Connecticut 2016 LIDAR LAS data points. The first return LIDAR LAS values, associated with the highest feature in the landscape (such as a treetop or top of building), were used to capture the natural and built features on the Earth's surface beyond the approximate limits of clearing associated with the proposed solar facility. The "bare-earth" return values were utilized to reflect proposed conditions where vegetative clearing associated with the proposed solar facility would occur.

Municipal Open Space, State Recreation Areas, Trails, County Recreation Areas, and Town Boundary data obtained from CT DEEP. Scenic Roads: CTDOT State Scenic Highways (2015); Municipal Scenic Roads (compiled by APT)

**Dedicated Open Space & Recreation Areas**  
 Connecticut Department of Energy and Environmental Protection (DEEP): DEEP Property (May 2007); Federal Open Space (1997); Municipal and Private Open Space (1997); DEEP Boat Launches (1994)  
 Connecticut Forest & Parks Association, Connecticut Walk Books East & West

#### Other

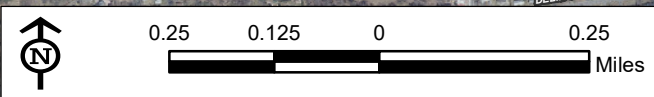
CTDOT Scenic Strips (based on Department of Transportation data)

#### Notes

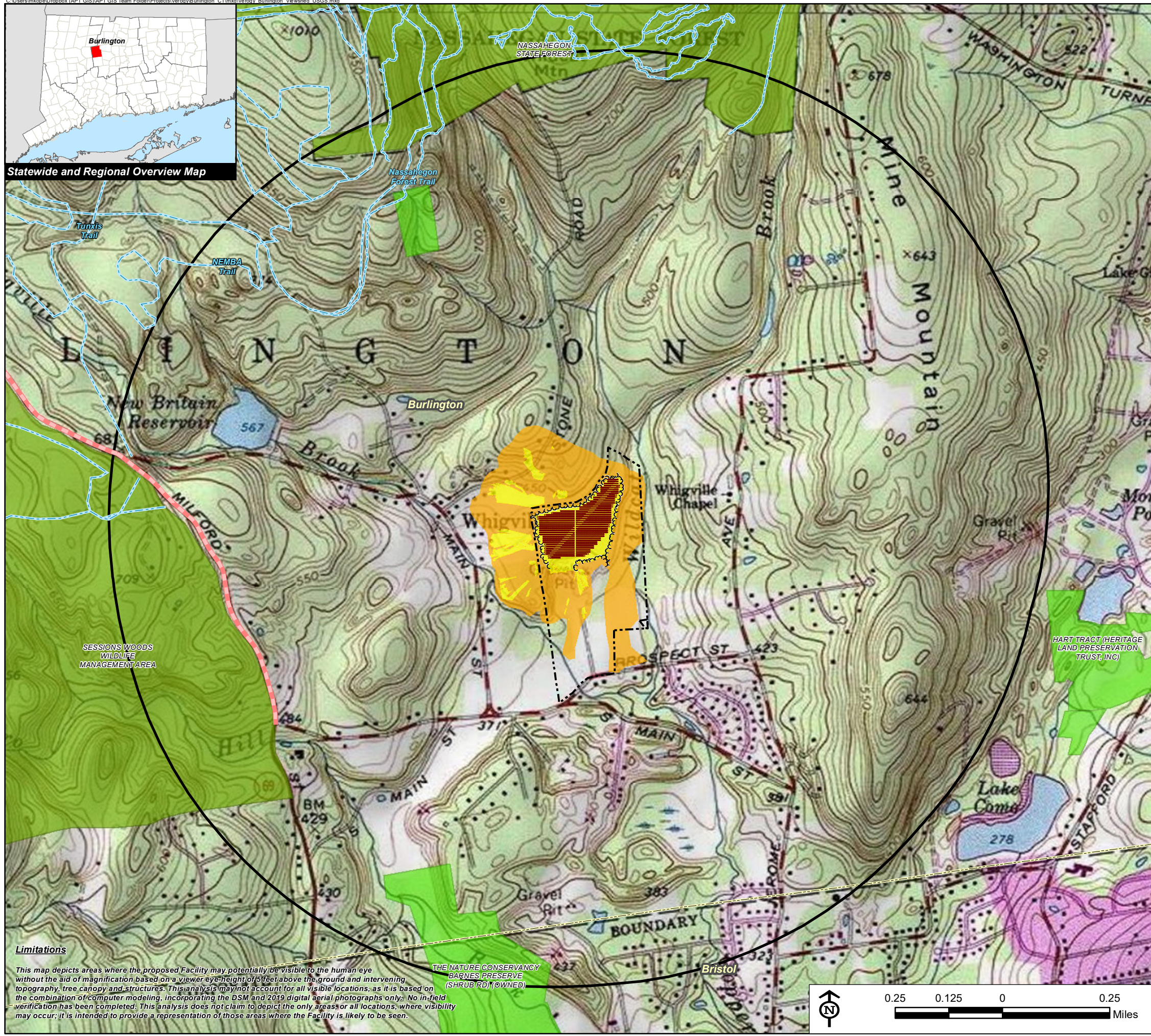
\*\*Not all the sources listed above appear on the Viewshed Maps. Only those features within the scale of the graphic are shown.

#### Limitations

This map depicts areas where the proposed Facility may potentially be visible to the human eye without the aid of magnification based on a viewer eye-height of 5 feet above the ground and intervening topography, tree canopy and structures. This analysis may not account for all visible locations, as it is based on the combination of computer modeling, incorporating the DSM and 2019 digital aerial photographs only. No in-field verification has been completed. This analysis does not claim to depict the only areas, or all locations, where visibility may occur; it is intended to provide a representation of those areas where the Facility is likely to be seen.

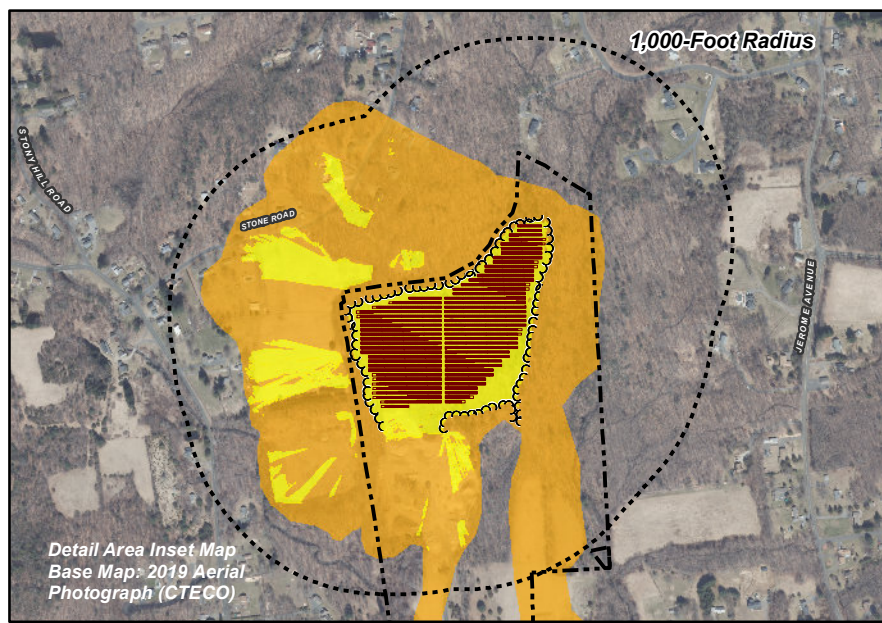






Statewide and Regional Overview Map

**Limitations**  
 This map depicts areas where the proposed Facility may potentially be visible to the human eye without the aid of magnification based on a viewer eye height of 5 feet above the ground and intervening topography, tree canopy and structures. This analysis may not account for all visible locations, as it is based on the combination of computer modeling, incorporating the DSM and 2019 digital aerial photographs only. No in-field verification has been completed. This analysis does not claim to depict the only areas or all locations, where visibility may occur; it is intended to provide a representation of those areas where the Facility is likely to be seen.



Detail Area Inset Map  
 Base Map: 2019 Aerial Photograph (CTECO)

### Viewshed Analysis Map

Proposed Solar Facility  
 Burlington Solar One  
 85 Prospect Street  
 Burlington, Connecticut

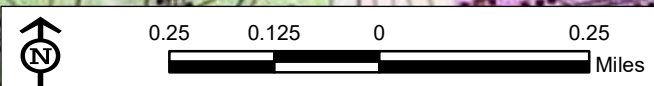
Proposed solar panels to be mounted on approximate 10' AGL support structures. Forest canopy height and topographic contours are derived from LiDAR data. Study area encompasses a 1-mile radius and includes 2,412 acres. Base Map Source: USGS 7.5 Minute Topographic Quadrangle Map, Bristol, CT (1984) Map Date: September 2020

**Legend**

Site	Municipal and Private Open Space Property
Solar Modules	State Forest/Park
Treeline (Clearing Limit)	<b>Protected Open Space Property</b>
Study Area (1-Mile Radius)	Federal
Predicted Year-Round Visibility (24 Acres)	Land Trust
Areas of Potential Seasonal Visibility (69 Acres)	Municipal
Municipal Boundary	Private
Trail	State
Scenic Highway	
DEEP Boat Launches	

**Data Sources:**  
**Physical Geography / Background Data**  
 A digital surface model (DSM) was created from the State of Connecticut 2016 LiDAR LAS data points. The first return LiDAR LAS values, associated with the highest feature in the landscape (such as a treetop or top of building), were used to capture the natural and built features on the Earth's surface beyond the approximate limits of clearing associated with the proposed solar facility. The "bare-earth" return values were utilized to reflect proposed conditions where vegetative clearing associated with the proposed solar facility would occur.  
 Municipal Open Space, State Recreation Areas, Trails, County Recreation Areas, and Town Boundary data obtained from CT DEEP. Scenic Roads: CTDOT State Scenic Highways (2015); Municipal Scenic Roads (compiled by APT)  
**Dedicated Open Space & Recreation Areas**  
 Connecticut Department of Energy and Environmental Protection (DEEP): DEEP Property (May 2007); Federal Open Space (1997); Municipal and Private Open Space (1997); DEEP Boat Launches (1994)  
 Connecticut Forest & Parks Association, Connecticut Walk Books East & West

**Other**  
 CTDOT Scenic Strips (based on Department of Transportation data)  
**Notes**  
 \*\*Not all the sources listed above appear on the Viewshed Maps. Only those features within the scale of the graphic are shown.



Burlington Solar One, LLC







PHOTOGRAPHED ON 4/11/2017

**EXISTING**

**PICTOMETRY OBLIQUE AERIAL IMAGERY - FACING EAST**





**PROPOSED**

**PICTOMETRY OBLIQUE AERIAL IMAGERY - FACING EAST**