

**Eastern Spadefoot Breeding Pool
Restoration Plan
North Stonington Solar Center
North Stonington, Connecticut**

Eastern Spadefoot Toad Breeding Pool Restoration Notes



1. The breeding pool was restored on May 12th and 13th, 2020 under the supervision of Dennis P. Quinn of Quinn Ecological, LLC. The pool restoration included the removal of approximately 27 cubic feet of accumulated organics and manure deposits. The re-contouring of the pool followed the micro-watershed topography of the previous breeding pool's topography prior to its impact. The restored pool measures approximately 83 feet long by 65 feet wide and has a maximum depth of approximately 1.65 feet.
2. The pool was planted on May 13, 2020 with a stabilizing grass seed mix, further herbaceous plantings will occur during the 2021 growing season in late summer/early fall.
3. A rain gauge was installed onsite to monitor precipitation. In addition, a staff gauge was installed at the deepest point in the pool to monitor water drawdown. This will allow monitoring of the pool hydrology as it correlates to rainfall events to determine if the pool is providing the proper hydroperiod for successful breeding by Eastern Spadefoot Toad.
4. If hydroperiod data reveals the limits and/or depths of the restored pool are not successfully supporting breeding by Eastern Spadefoot Toad, regrading of the pool will occur under the supervision of Dennis P. Quinn of Quinn Ecological, LLC.
5. Herbaceous plantings will be installed during the late summer/early fall 2021 growing season per the Spadefoot Pool Planting Schedule under the supervision of Dennis P. Quinn of Quinn Ecological, LLC.
6. Soil surface will be scarified as needed to provide a suitable planting bed for the herbaceous plantings.

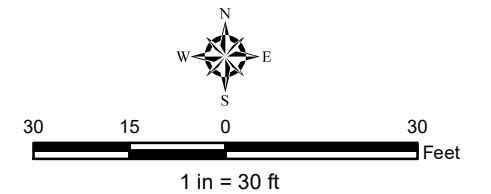
Spadefoot Pool Planting Schedule			
Total 600 Live Plugs			
Common Name	Scientific Name	Plant Size	Ind. Status
New England Aster	<i>Aster novae-angliae</i>	2" plug	FACW-
Soft Rush	<i>Juncus effuses</i>	2" plug	FACW+
Blue Vervain	<i>Verbena hastata</i>	2" plug	FACW
Hop Sedge	<i>Carex lupulina</i>	2" plug	FACW+
Grass-leaved Goldenrod	<i>Euthamia graminifolia</i>	2" plug	FAC
Path Rush	<i>Juncus tenuis</i>	2" plug	FAC-
Three Square Bulrush	<i>Schoenoplectus pungens</i>	2" plug	FACW

Note: seed pool with New England WetMix seed mix from New England Wetland Plants, Inc.

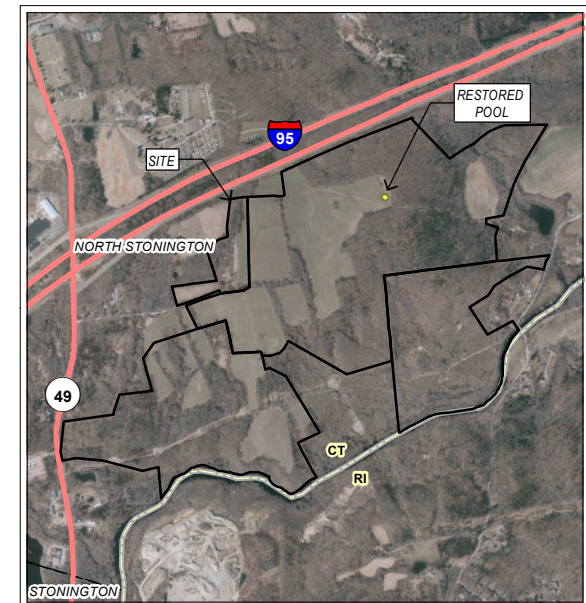


Legend

-  Site (Inset Map Only)
-  Limits of Restored Pool



Site Location Inset Map



Map Sources:

Ortho Base Map: CT ECO 2019Aerial Imagery

Map Date: February 2021