

TABLE OF CONTENTS

Mission	3	Vehicle Fires	34
Training Course Catalog	3	Fire Officer Programs	35
Commissioners	4	First Line Company Supervision —	
Letter from the State Fire Administrator	5	Fire Officer I	35
Letter from the Director of Training	6	Multi-Company Supervision — Fire Officer II	36
CFA Information and Fee Policy	7	Organizational Administration —	
History	8	Fire Officer III	37
In-Service Live Fire Training	9	Executive Management —	
Disclaimer	9	Fire Officer IV	38
Facilities Information	10	Building Construction: Wood and Ordinary ..	39
Apparatus Programs	12	Building Construction: Non-Combustible	39
2Q	12	Conducting Fire Prevention Inspections	40
Introduction to Tactical Considerations for		Engine Company Attack Operations	40
Aerial Devices	12	Fire Department Operations In	
Aerial Operator	13	High Rise Buildings	41
Basic Pump Operations	14	Fire Department Safety Officer	42
Emergency Vehicle Operations	14	Incident Command System (ICS)	43
Fire Service Hydraulics	15	Incident Safety Officer	43
Pump Operator	15	Introduction to Volunteer	
Tactical Considerations for Aerial Devices ...	16	Emergency Services Management	44
EMS Programs	17	Leadership I:	
Complying with Bloodborne		Strategies for Company Success	
Pathogens Standard (EMS)	17	Decision Making, Problem Solving,	
Emergency Medical Technician Refresher ...	18	Running Meetings	45
Incident Command System for		Leadership II:	
Emergency Medical Services (EMS) ...	19	Strategies for Personal Success	
Infection Control for		Multiple Roles, Enhancing Your Personal	
Emergency Responders —		Power Base, Ethics, Creativity	45
The Supervisor's Role	19	Leadership III:	
Life Star Response and Landing Protocols ..	20	Strategies for Supervisory Success	
Medical Response Technician (MRT)	21	Situational Leadership, Delegating,	
Medical Response Technician Refresher		Coaching, Discipline	46
(MRT-R)	22	Legal Problems in the Fire Service	46
Fire Investigation Programs	23	Managing Company Tactical Operations	
Arson Awareness for the		(MCTO) — Preparation	47
First Responder — A Team Approach ..	23	Managing Company Tactical Operations	
Arson Detection for the First Responder	23	(MCTO) — Command Decision	47
Fire Arson Detection	23	Managing Company Tactical Operations	
Fire Cause Determination for the		(MCTO) — Tactics	48
Company Officer	24	Managing in a Changing Environment	48
Initial Fire Investigation	24	Planning and Developing	
Firefighting Programs	25	Fire Department Budgets	49
Recruit Firefighter	25	Preparing for Promotional Interviews	49
Firefighter II	26	Rural Tactical Operations	50
Chimney Fires	26	Shaping the Future	50
Commercial Vehicle Fires	27	Strategy and Tactics	51
Electricity: Dead or Alive	27	Streetwise for Fire Officers	51
Elevator Rescue for Fire Departments	28	Fire Police Programs	52
Fire Department Response to		Fire Police Procedures	52
Carbon Monoxide Emergencies	28	Advanced Fire Police Procedures	52
Firefighter Safety and Survival	29	Hazardous Materials Programs	53
Flashover Survival	29	Chemistry of Hazardous Materials	53
Forcible Entry	30	Decontamination (Decon)	54
Handling Elevator Emergencies	30	Emergency Response to Terrorism:	
Managing Line-of-Duty Deaths	31	Basic Concepts (ERT:BC)	54
Mobile Home Fires	31	Emergency Response to Terrorism:	
Positive Pressure Ventilation	32	Self-Study	55
SCBA Maze	32	Responding to the Terrorist Threat:	
Smoke Divers	33	Managing the Incident	55
Sprinklers	33	Responding to the Terrorist Threat:	
Structural Firefighting	34	An Introduction	56

Hazardous Materials	
First Responder Awareness	56
Hazardous Materials	
First Responder Operational	57
Hazardous Materials Operational for	
Emergency Medical Services (EMS) ...	58
Hazardous Materials Operational Refresher	59
Hazardous Materials Technician	60
Hazardous Materials Technician Refresher ..	61
LPG Emergencies	61
Instructor Programs	62
Education Methodology —	
Fire Service Instructor I	62
Course Development and Design —	
Fire Service Instructor II	63
Creative Teaching Techniques	63
Increasing Instructor Competencies	64
LEPC Programs	65
LEPC — Blueprint for	
Community Emergency Management .	65
LEPC — Development of	
Direction and Control	65
Technology Tips for Top-Notch Training	65
LEPC — Disaster Planning: Development	
of an Agency, Organization,	
Response Plan	65
LEPC — Emergency and Disaster	
Resources	66
LEPC — First Notice, Situational Analysis,	
and Determining Urgency	66
LEPC — Legal Issues	66
LEPC — Lessons Learned	
from the Disaster Research	67
LEPC — On-Scene Management	67
LEPC — OSHA's Final Rule	67
LEPC — Philosophy and Concepts of	
Effective Emergency Operations	68
LEPC — Role of	
Emergency Operations Centers	68
LEPC — The Incident Manager:	
Jobs and Responsibilities	68
LEPC — Table-Top Exercise	69
Rescue Programs	70
Aircraft Rescue and Firefighting	70
Basic Vehicle Rescue	70
Basic Water Safety	71
Cold Water Rescue	71
Confined Space Rescue	72
Confined Space Rescue: Refresher	72
Hydraulic Rescue	73
Pneumatic Rescue	73
Basic Rope Rescue	74
Advanced Rope Rescue	74
Low Angle Evacuation	75
Trench Rescue	75
Trench Rescue Awareness	76
Public Education Programs	77
Firehawk Companion Program	77
Public Fire and Life Safety Educator I	77
Public Information Officer	78
Kid's Fire Safety House	79

IFSTA Publications	80
Certification Examination	
 Components	81
National Professional	
Qualifications Standards	81
Certification Flow Chart	82
Examination Reference Materials	83
Certification Examination Requirements	85
Certification Examination	
Unexcused Absence Procedure	85
Certification Exam Checklist	86
Indemnification of Instructors	87
CT Certification on the Web	87
National Fire Service Certification	87
National Board on Fire Service Professional	
Qualifications Information	88
Special Programs	90
Connecticut Fire Officer Weekend	90
Chemical Emergency and Community	
Response Conference	90
Introduction to the Fire Service	90
Regional Deliveries	90
Public Fire and Life Safety	
Education Conference	90
Juvenile Firesetting Conference	90
New England Training Weekend	90
CT Agencies/Organizations/Fire Schools	91
CFP&C, CFA Staff Contact Information	92
Connecticut Fire Academy	
Acceptance Notices and	
Refund/Cancellation Policy	92
Program Hours	92
CT Fire Dept. Instructors Association	93
Scholarship Programs	95
The Flanagan Scholarship Program	
for Active Firefighters	95
Requirements for Flanagan Fund Awards	95
Connecticut Fire Department	
Instructors' Association Award	96
Application	97
The Fire Museum of the	
Connecticut Firemen's Historical	
Society	98
Notes	99
Course Applications	center
Directions to the Connecticut	
Fire Academy	inside back cover

State of Connecticut Commission on Fire Prevention and Control and Connecticut Fire Academy

To prevent or mitigate the effects of fire and disasters, either natural or manmade, on the citizens of the State of Connecticut. This objective shall be accomplished through the development and delivery of state-of-the-art educational programs designed to meet nationally recognized standards, certification of individuals to such standards and maintenance of up-to-date resources for use by fire service personnel, public educators and other first responders.

Training Course Catalog

The Connecticut Fire Academy has instituted an improved version of its annual training calendar. The new format will be known as the Training Course Catalog. Courses offered by the Academy are listed in this publication.

Some of these courses are listed in a fold-out six-month schedule. Registrations can be faxed as well as mailed. Our fax number is (860) 654-1889. Applications for scheduled courses are included in the catalog as well as in the schedule.

All programs can be customized to fit your training needs. The Academy provides live-fire training for individual fire departments to utilize our burn building and training ground props. Inquiries to contract courses and to use the training ground or burn building should be sent in writing to:

Director of Training and Education

Connecticut Fire Academy
34 Perimeter Road
Windsor Locks, CT 06096-1069



Commissioners

Uniformed Professional Firefighters' Association of Connecticut

Term of Office Expires: 8/31/02
Peter S. Carozza, Jr., Chairman
Sherman Street
West Hartford, CT 06110

Term of Office Expires: 8/31/01
Daniel Milewski
1435 Huntington Road
Stratford, CT 06497

Connecticut Fire Chiefs' Association

Term of Office Expires: 8/31/02
Chief William S. Johnson, Jr.
4 Botte Drive
West Haven, CT 06516

Term of Office Expires: 8/31/02
Chief Edward F. Haber, Ret. Secretary
346 Sprucebrook Road
Berlin, CT 06037

Connecticut Fire Department Instructors' Association

Term of Office Expires: 8/31/01
Chief Peter F. Mullen, Ret.
22 Toole Drive
Branford, CT 06405

Term of Office Expires: 8/31/02
Chief Richard H. Nicol, Ret.
49 White Avenue
Middlebury, CT 06762

Connecticut Conference of Municipalities

Term of Office Expires: 8/31/02
Edward B. Gomeau, Finance Director
Town of Stratford
P.O. Box 166
Stratford, CT 06497

Connecticut State Technical Colleges (Ex-Officio Voting Member)

Represents Andrew C. McKirdy, Interim Chancellor of
Community & Technical Colleges
George J. Munkenbeck, Jr., Coordinator
Waterbury State Technical College
750 Chase Parkway
Waterbury, CT 06708-3000

Connecticut State Firefighters' Association

Term of Office Expires: 8/31/02
Charles M. Stankye, Jr.
30 David Humphreys Road
Derby, CT 06418

Term of Office Expires: 8/31/02
Battalion Chief James P. Wilkinson
128 Seaside Avenue
Milford, CT 06460

Connecticut State Fire Marshals' Association

Term of Office Expires: 8/31/01
John Vendetta
223 Princeton Street
Hartford, CT 06106

Term of Office Expires: 8/31/02
Kevin J. Kowalski, Vice Chairman
46 Owens Brook Boulevard
Simsbury, CT 06070

State Fire Marshal (Ex-Officio Voting Member)

Represents Commissioner Henry C. Lee, Ph.D., Department of Public Safety
Wayne Maheu, Director, Office of Education and Data Management
P.O. Box 2794
Middletown, CT 06457-9294



Letter from the State Fire Administrator



STATE OF CONNECTICUT
COMMISSION ON FIRE PREVENTION AND CONTROL
OFFICE OF THE STATE FIRE ADMINISTRATOR
34 Perimeter Road • Windsor Locks, CT 06096-1069



Greetings,

Last year, following the release of our newly formatted course catalog, we received many positive comments supporting the change. This year, we have elected to continue utilizing this format while refining and expanding some of the information contained within.

Our catalog is filled with many new programs in addition to those that long have been our hallmark. As in past years, programs are offered both at the Connecticut Fire Academy in Windsor Locks as well as at host locations throughout the state. In addition to Academy offerings, this resource catalog also contains information relevant to our Public Fire and Life Safety Education initiatives in addition to our testing and certification services.

Over the past two years, we have utilized the worldwide web as a medium to supplement catalog information on a regular basis. Legislative information, Commission meeting minutes, Academy information, new courses, special offerings, important policies and procedures are all regularly maintained on our page. Please bookmark our address and visit often at <http://www.state.ct.us/cfpc>.

As we enter a new millennium, the Commission urges you to take advantage of the fine resources our agency has to offer you and your department. Most of our programs and services are subsidized by the State ensuring the cost to you and your department remains reasonable.

Whether you are new to our programs or a regular program participant, the staff and I welcome your comments and recommendations. We look forward to working with you in support of your local mission of serving and protecting your community.

Have a safe and rewarding year!

Sincerely,

A handwritten signature in black ink, appearing to read "Jeffrey J. Morrissette".

Jeffrey J. Morrissette
State Fire Administrator

Letter from the Director of Training



STATE OF CONNECTICUT
COMMISSION ON FIRE PREVENTION AND CONTROL
CONNECTICUT FIRE ACADEMY
34 Perimeter Road • Windsor Locks, CT 06096-1069



Greetings!

The Connecticut Fire Academy is growing and improving. We now operate a Flashover Simulator that subjects our students to multiple controlled flashover conditions. This popular program brings Class A burning to our Windsor Locks facility. Facility expansion ideas are being explored to allow the installation of new props and companion curriculums.

Under development is a new instructor course that will improve your platform skills. It is specifically constructed to develop an individual's classroom presence and expose students to alternative methods of information transfer like Training-in-Context. Learning objectives that are not covered or available from NFPA are being created from Connecticut Training Officers responses to a needs assessment questionnaire.

While Peterboro is not an authentic town in Connecticut, it is a real opportunity to practice disaster responses from Godzilla's perspective. Peterboro is a portable tabletop community simulator that encompasses all facets of urban and rural environments. Besides employment in the Fire Officer classes and Hazardous Materials courses, it is taken on the road for local emergency planning committee (LEPC) practices.

The Connecticut Fire Academy is now a vendor for Davis, Penwell and Delmar publications in addition to the complete IFSTA line of products. Currently we are designing a more friendly and responsive counter service that will include soft goods like decals, pins, patches, logo baseball caps, t-shirts and sweatshirts.

We are proud of the educational accomplishments at the Connecticut Fire Academy. Letters have been received indicating class participation as the major factor in some firefighting survival situations. With the introduction of the Rapid Intervention Team training, such success stories can only increase. Credit for such quality instruction lies with our high caliber adjunct staff. It goes beyond pleasing results to say that our adjuncts are an integral component of the Connecticut Fire Service.

The entire Training Division staff welcomes any comments that may enhance our products or services for you.

Forever striving for continuous improvements,

A handwritten signature in cursive script that reads "Adam D. Piskura".

Adam D. Piskura
Director of Training and Education

CFA Information and Fee Policy

Facility Rooms	Rent to Federal/State/Local Government Agencies	Rent to Private Sector
Single Classroom (20 Seat Capacity)	50.00	125.00
Double Classroom (40 Seat Capacity)	75.00	250.00
Conference Room	75.00	300.00
Auditorium	100.00	275.00
Training Pool	100.00	150.00
Computer Room	500.00	500.00
Available Specialized A/V Equipment		
Specialized Audiovisual Equipment	150.00	150.00
Peterboro Table-Top Community Simulator	Price is negotiable upon request.	

All rooms are equipped with the following equipment:

Overhead Projector, 35MM Slide Projector, White Board and Easel Chart.

Specialized A/V equipment is available on a first-come, first-served basis.

Applicable charges are noted above.

Cost for use of agency copy machines will be calculated at a rate of \$.25 per copy.

Fax machine is \$10.00 per day.

Additional easel pads are available at a cost of \$15.00 each.

Facility user fees will be reviewed on a case-by-case basis for private sector entities using CFA facilities for programs which result in a profit.

Municipal fire and emergency service departments/organizations are exempt from fees with the exception of those situations which require the scheduling of staff support during non-business hours.

History

State of Connecticut Commission on Fire Prevention and Control and Connecticut Fire Academy

For decades much of the training in Connecticut's fire service was done by a small cadre of dedicated local instructors, regional fire schools (generally operated by regional fire chiefs or mutual aid associations) and the Connecticut Fire Department Instructors' Association.

Since 1973, there have been numerous national, regional and local attempts to implement the recommendations of the National Commission on Fire Prevention and Control as outlined in its report, "America Burning." In 1975, the Connecticut Legislature followed suit by establishing a new state agency, the Commission on Fire Prevention and Control. The Commission, composed of representatives from each of the statewide fire service organizations, had a legislative mandate to serve as the focal point for fire service training and education for the state's 30,000 career and volunteer firefighters.

Initially, the Connecticut State Fire School began to develop and deliver programs as well as work toward becoming a support mechanism for local and regional school instructors. Throughout the 1980's, the Commission was delivering training programs to an average of 8,000 firefighters per year. What was lacking was a center that would accommodate the fire service's ever-increasing technical requirements.

The Commission decided to join with Bradley International Airport Fire and Emergency Services and Hartford County Fire Emergency Plan, both of which were using outdated facilities, in a cooperative effort to plan for a new joint facility. In 1985, the State Legislature authorized the creation of a study committee to investigate establishing a fire and hazardous materials training school.

In January 1986, the committee recommended the construction and operation of a cost-effective self-supporting training facility to serve the needs of Hartford County, Bradley International Airport, the State Commission and other emergency responders, particularly those involved in preparing for and mitigating hazardous materials incidents. The facility had to be comfortable, educationally conducive and technologically advanced in respect to live fire training, both interior and exterior, as well as compliant with all applicable safety and environmental regulations.

That year a public act was passed authorizing \$1 million for the planning, design and construction, allowing the architect and engineers to begin the design process. User committees were formed to obtain input. Their members included representatives from the main user groups: business, industry, state

fire organizations and allied state agencies such as the Department of Environmental Protection.

The NFPA Professional Qualification Standards, which form the basis of most of our programs, also played a big part in the design. We required a facility that would allow us to effectively train and evaluate fire service personnel for certification.

The project still required extensive negotiations to obtain final approval to authorize bonds for construction. In January 1992, the state authorized the provision of \$16 million through the issuance of bonds for construction, which also covered site utilities, architect fees, construction management fees, art (required by statute), equipment and environmental concerns. Construction began March 9, 1992 and took two years, with limited operations beginning in early 1994. About 14,000 fire service and allied professionals annually train in various programs at the new facility.

In-Service Live Fire Training

The Academy training grounds are available to local fire departments wishing to conduct live fire training. The fire scenarios available include a two-story burn building, car, truck, airplane, LPG tank, spray booth, z-pit and round pit. All fires are propane fueled. Departments wishing further information or to make arrangements to use the live fire training scenarios should direct their inquiries to Jim Carroll via e-mail at jim.carroll@po.state.ct.us or by telephone at (860) 624-6363, extension 268.

Disclaimer

The Commission on Fire Prevention and Control and the Connecticut Fire Academy shall provide education opportunities which encourage diversity and are equitable for all people for race, creed, color, gender, sexual preference, national origin, age, marital status with regard to public assistance, religion or disability.

The Connecticut Fire Academy employs techniques in the proper and safe use of training equipment only learned through personal instruction received from an instructor who is well qualified in all phases of instruction. Such instruction may include an evolution of your comprehension of, and ability to perform, the tasks required to safely and efficiently use Fire Academy training equipment.

Never attempt its use until you have received such instruction and are believed competent by your instructor.

Facilities Information

State of Connecticut Commission on Fire Prevention and Control and Connecticut Fire Academy

The Academy is situated on 16 acres of land in north central Connecticut at Bradley International Airport in Windsor Locks. The Academy complex borders the New England Air Museum, a newly constructed airport traffic control tower and Bradley Airport Fire Station #2. Presently, 9.6 acres of land are being utilized by the Academy. The balance of the property remains undeveloped because it is predominantly a wetland, which is a habitat for various endangered species.

The training complex consists of four primary structures including an administration building, a fire training burn building, a sprinkler lab training tower, and a firehouse/maintenance garage. There is also an open drill yard with manually controlled propane-fueled fire scenarios. Propane is used in both a liquid and vapor state on many of the props, which include a car, truck, airplane, a Z-shaped burn pit for practicing extinguishment techniques, flammable liquids pit, propane tank and industrial scenarios. Each scenario is controlled from a dedicated operator's station equipped with a "deadman" switch to ensure student safety.

Another feature of the training grounds is a vehicle extrication area with dedicated electrical power for rescue tools. For realistic hands-on training in plugging, patching, diking and damming, an MC311 tanker is rolled onto a guard rail with various other "MC" style domes welded to the vessel at different angles. Water is piped as a stream and fine mist to each dome as well as to various cracks, punctures and broken flanges throughout. A piping rack with leaks from valves, pipes and a catwalk, along with a confined space scenario, is also nearby. Numerous safety controls and emergency stop switches are provided throughout.

The 4,800 square foot burn building is two and a half stories high and has eight rooms, four of which are using propane-fueled computer-controlled "fire-places". Other features include an interior manhole to simulate confined space rescues, metal doors between the rooms and floors, a simulated basement door, balcony area and a training roof at ground level with replaceable panels. In the future, the available rooms will include a simulated garage car fire, additional industrial scenarios and a flashover simulator.

The training tower is five stories high, with the first two floors enclosed and heated and floors three through five are open and each has a balcony. A sprinkler laboratory is located on the first floor. The third floor contains a "Spider Web" rope maze scenario. Other features include a manhole between

floors, an emergency fire phone system on each floor to assist in the simulation of high-rise tactics, a standpipe system, sprinkler heads and windows of various styles.

The crescent-shaped administration building's curved design was designed that way to deflect noise from the airport. This building houses offices for the Commission and Hartford County Fire School staff. There are also 12 classrooms, three of which are wired for satellite and CCTV, a formal conference room, a 96-seat auditorium and a large multi-purpose room with a full-service cafeteria. Dormitory rooms with private baths are on the second floor and the basement houses a fully equipped exercise room and a training pool. A fiberglass car body is secured to the bottom of the pool utilized for dive-rescue training.

The fire station has a dual occupancy. Bradley International Airport Fire Department mans the south half, while the Academy utilizes the north half. A KME pumper, Sutphen Tower, a loaned American La France pumper from the Department of Corrections, rescue truck and various training trailers are housed in the four large bays. Classroom facilities, SCBA compressor and filling station, locker rooms and shower facilities are also housed in the firehouse.

The training ground's water supply consists of a pumphouse and 350,000 gallon water storage tank, with a fully recirculating system that routes all water used during training through the storm water catch basins to a filtering sedimentation pit. Two 750 gpm centrifugal pumps return the water to the storage tank and two 750 gpm pumps supply the 12 training hydrants on site. Overflow within the system is directed through an oil-water separator before discharge to an adjacent wetland area.

Apparatus Programs

2Q

The 2Q course is designed to prepare the potential fire apparatus operator for the testing requirements established by the State of Connecticut Department of Motor Vehicles.

This four-day training course will consist of classroom and extensive practical sessions conducted over a three-week period with practical testing being administered by the Department of Motor Vehicles after completion of necessary course work.

The topics covered in the classroom portion of the course include: testing requirements; inspection methods; speed and braking distances; night driving; driving and alcohol; emergencies; accidents; and air brakes.

The topics covered in the practical portion of the course include: pre-trip inspection; the static course; and over-the-road skills.

Prerequisites: Applicants must possess a valid driver's license. Proof must be submitted with application.

Class Hours: 32

FM Credit: None

EMS-I Credit: None

Introduction to Tactical Considerations for Aerial Devices

This course will cover, in detail, the responsibilities of an aerial operator. The course will also explore some of the options available to the aerial operator in both emergency and non-emergency situations.

This course is delivered in a workshop style with open discussion so each operator can learn from the other students, as well as the instructor.

Prerequisites: None

Class Hours: 8

FM Credit: None

EMS-I Credit: None

Apparatus Programs

Aerial Operator

This six-day course meets NFPA 1002 for the driver/operator section which addresses aerial devices. Time will be spent with aerial, tower ladders and articulating booms. Course content will prepare the student for the practical and written examinations for Aerial Operator certification.

This course is designed for the driver/operator of aerial equipment. The course begins with road handling and moves on to apparatus placement, mobilization and stabilization, elevation, various aerial operations, and ends with apparatus readiness. It is required that each student have access to the reference manuals listed on page 83.

Full protective clothing (no SCBA) is required.

Prerequisites: None

Certification

Prerequisites: Applicants must be Certified Firefighter I or have been a member of a fire department on or before July 1, 1977, and must be legally licensed to drive emergency apparatus (2Q or class BCOL). Proof must be submitted with application.

Class Hours: 48

FM Credit: None

EMS-I Credit: None

Apparatus Programs

Basic Pump Operations

This one-day course examines the components and controls in the operation of a fire pump. The internal parts of a fire pump are examined with the goal of having the student fully understand how the fire pump moves water. Pump panel controls are discussed in relation to the specific function and use of each device. The process and functions involved in drafting and hydrant operations are explained in detail.

The afternoon will be spent having students set up for pumping evolutions.

Full protective clothing (no SCBA) is required for the afternoon session.

Prerequisites: None

Class Hours: 8

FM Credit: None

EMS-I Credit: None

Emergency Vehicle Operations

This two-day course is designed to build the awareness and skills of Emergency Response Vehicle Drivers. The course will begin in the classroom with an understanding of defensive driving techniques and then move outside to build skills based on the classroom discussions. Each student will get an opportunity to operate two different vehicles on a non-emergency driving course.

Prerequisites: Applicants will need to provide proof of a valid operator's license (2Q or class BCOL for firefighting apparatus).

Class Hours: 15

FM Credit: None

EMS-I Credit: None

Apparatus Programs

Fire Service Hydraulics

This one-day course for prospective and current pump operators will enhance skills in pump operations. Participants will learn how to determine and overcome friction loss; how to calculate theoretical pump pressure; and how to apply easy-to-use “rules of thumb.” Principles of relay pumping, supplying sprinklers, and standpipe systems will be discussed. The afternoon session will be spent on the training ground performing practical applications.

Full protective clothing (no SCBA) is required.

Prerequisites: None
Class Hours: 8
FM Credit: None
EMS–I Credit: None

Pump Operator

This six-day course is designed to prepare the student for the practical skills and written examinations for Pump Operator certification.

Class work will include: safe driving techniques; preventive maintenance; pump operations; hydraulic calculations; water supply; and apparatus systems.

The course begins inside the classroom and ends outside with the pumping apparatus. The main emphasis is on “hands-on” exercises utilizing various pumps, hose sizes and nozzles. It is required that each student have access to the reference manuals listed on page 83.

Full protective clothing (no SCBA) is required.

Prerequisites: None
Certification
Prerequisites: Applicants must be Certified Firefighter I or have been a member of a fire department on or before July 1, 1977, and must be legally licensed to drive emergency apparatus (2Q or class BCOL). Proof must be submitted with application.
Class Hours: 48
FM Credit: None
EMS–I Credit: None

Apparatus Programs

Tactical Considerations for Aerial Devices

This two-day course will cover, in detail, the responsibilities of the aerial operator, and will also explore some of the options available to the aerial operator in both emergency and non-emergency situations.

Topics covered include: apparatus placement; stabilization practices; elevation; and aerial safety. The second day of this course will include “hands-on” exercises.

Full protective clothing (no SCBA) is required.

Prerequisites: None

Class Hours: 16

FM Credit: None

EMS-I Credit: None

Complying with Bloodborne Pathogens Standard (EMS)

If, in the course of their duties, employees are faced with the possibility of being exposed to blood or bodily fluids, an Exposure Control Plan for Bloodborne Pathogens must be in place.

This half-day course will be an overview of the OSHA 29 CFR 1910.1030 Bloodborne Pathogens Standard and how a fire department can ensure compliance to this standard.

Topics will include: controlling exposures through proper workplace habits and personal protection; decontamination procedures; reporting exposures; and training records.

Prerequisites: None

Class Hours: 4

FM Credit: None

EMS-I Credit: 3 Hours

EMS Programs

Emergency Medical Technician Refresher

This three-day course is designed to review and refresh knowledge and skills required for Emergency Medical Technicians currently certified according to the latest U.S. DOT EMT-Basic National Standard Curriculum. Classroom and “hands-on” training will update the EMT on current practices and confirm skill levels. A review and renewal of Healthcare Provider CPR will be conducted in conformance with the latest JAMA standards through approved programs of the American Heart Association.

Refresher topics include: well-being of the EMT; airway management; ventilation and oxygen therapy; patient assessment; medical trauma; general pharmacology; interventions; altered mental status; automated external defibrillation; infants and children; emergency childbirth; normal and abnormal deliveries; post-delivery care; body substance isolation (BSI); and M.A.S.T.

Practical laboratory sessions will include: bleeding control and bandaging/splinting. Comfortable clothing is suggested for these sessions.

Additional topics include: Haz-Mat recognition; personal protection; patient handling/moving techniques; environmental injuries; and the legal, ethical and psychological aspects of EMS.

Written and Practical examinations will be conducted in conformance with the policies established by the State of Connecticut Department of Public Health.

Prerequisites: Applicant must be a certified EMT. Proof must be submitted with application.

Class Hours: 32

FM Credit: None

EMS-I Credit: None

Incident Command System for Emergency Medical Services (EMS)



The objective of this two-day course is to provide the students with the ability to implement an incident command system at small or medium sized incidents and manage the incident for 20 minutes or until the line supervisor arrives on the scene and assumes command.

Participants will be introduced to the concepts of EMS-Specific Incident Command through lecture and guided discussion. Scenarios, case studies, graphics, audiovisuals, and role playing will be utilized to demonstrate understanding of the concepts.

Prerequisites: None
Class Hours: 16
FM Credit: None
EMS-I Credit: 3 Hours

Infection Control for Emergency Responders — The Supervisor's Role



This two-day course will provide supervisory fire and EMS personnel the knowledge and skills required to conduct training, monitor compliance with OSHA 29 CFR 1910.1030, and to serve as role models for positive behaviors and attitudes toward infection control in the workplace.

This course is designed to improve the understanding of fire service officers and emergency medical service first-line supervisors about protection of the individual and department/station personnel from the full range of infectious diseases spread through occupational or other exposure.

Topics include: principles of disease transmission; health maintenance; personal protective equipment; incident operations and recovery; post-exposure; and station issues.

Prerequisites: None
Class Hours: 16
FM Credit: None
EMS-I Credit: 3 Hours

EMS Programs

Life Star Response and Landing Protocols

The Connecticut Fire Academy offers this Train-the-Trainer course in an effort to assist emergency responders in training their personnel in Life Star response and landing protocols. Developed by the Connecticut Fire Chief's Association Life Star Committee, the course is designed to assure safe operating practices in the use of aeromedical helicopter service.

Topics include: requesting helicopter support; landing zone command; fire service preparation; communications; and ground operations.

Participants will receive an instructor guide and a list of resources available for course delivery at their own department or agency.

Prerequisites: None

Class Hours: 4

FM Credit: None

EMS-I Credit: 3 Hours

Medical Response Technician (MRT)

This 56-hour course, offered under the auspices of the Connecticut Department of Public Health, satisfies the latest U.S. DOT First Responder National Standard Curriculum requirements for Medical Response Technician.

This level of training is designed for the person who is often first at the scene. Many police officers, firefighters and industrial health personnel are certified MRT's. The emphasis is on activating the EMS system and providing immediate care for life-threatening injuries, controlling the scene, and preparing for the arrival of the ambulance.

Included in the course is certification in American Heart Association Healthcare Provider CPR and Automated External Defibrillation.

Upon successful completion of this course and passing the State certification examinations, students will be certified by the State of Connecticut as Medical Response Technicians.

Course length: 7 days, 8:30-4:30 PM

Prerequisites: Applicants must be 18 years of age or older to register or complete an age waiver form.

Class Hours: 56

FM Credit: None

EMS-I Credit: None

EMS Programs

Medical Response Technician Refresher (MRT-R)

This two-day course is designed to review and refresh knowledge and skills for currently certified Medical Response Technicians and to introduce the changes in content, philosophy and emphasis of the latest U.S. DOT First Responder National Standard Curriculum. Classroom and “hands-on” training will update the MRT on current practices and confirm skill levels.

A review and renewal of Healthcare Provider CPR will be conducted in conformance with the latest JAMA standards through approved programs of the American Heart Association.

Course topics include: well-being of the First Responder; legal and ethical issues; the human body; lifting and moving; airway management; assessment of patient; medical emergencies; trauma emergencies; childbirth; infants and children; gaining access and triage; and automated external defibrillation.

Practical laboratory sessions will include: bleeding control; and bandaging and splinting. Comfortable clothing is suggested for these sessions.

Written and Practical examinations will be conducted in conformance with policies established by the State of Connecticut Department of Public Health.

Prerequisites: Applicants must be Certified Medical Response Technicians (MRT). Proof must be submitted with application.

Class Hours: 16

FM Credit: None

EMS-I Credit: None

Fire Investigation Programs

Arson Awareness for the First Responder — A Team Approach



This four-hour National Fire Academy course is geared to all fire and police personnel whose responsibility is to recognize the potential for arson, preserve evidence, and notify the next level of personnel.

Prerequisites: None
Class Hours: 4
FM Credit: 4 Hours
EMS–I Credit: None

Arson Detection for the First Responder



This two-day National Fire Academy course is designed to provide a clear definition of the role of the initial responders and to provide essential knowledge to enable them to recognize the potential of an intentionally set fire, to preserve evidence, and to properly report information to appropriate officials.

Topics covered include: fire behavior; critical observations; fire cause; scene security; evidence preservation; and legal considerations.

Prerequisites: None
Class Hours: 16
FM Credit: 4 Hours
EMS–I Credit: None

Fire Arson Detection



This two-day National Fire Academy course is designed to familiarize all fire service personnel with basic techniques for determining fire cause and recognizing evidence of arson.

Topics covered in this course include: determining the point of origin; indications of possible arson; preserving the fire scene and evidence for investigative purposes; and the initial steps in an arson investigation.

Prerequisites: None
Class Hours: 16
FM Credit: 12 Hours
EMS–I Credit: None

Fire Investigation Programs



Fire Cause Determination for the Company Officer

This six-day National Fire Academy course is geared to the company level officer or Fire Chief who is on the scene initially and is responsible to make a basic call as to the origin and cause of minor fires.

Prerequisites: None
Class Hours: 48
FM Credit: 36 Hours
EMS-I Credit: None



Initial Fire Investigation

This six-day National Fire Academy course is geared to the department level individual whose responsibility is to make more complex origin and cause determinations.

Prerequisites: None
Class Hours: 48
FM Credit: 36 Hours
EMS-I Credit: None

Firefighting Programs

Recruit Firefighter

This ten-week course will focus on developing the skills needed for a recruit firefighter to perform entry level tasks.

One of the first important components of the course will be to establish in the recruit a strong desire and will of self-discipline, teamwork, company morale, orderliness and precision.

The fire department organizational structure will be defined showing the role and responsibility of the firefighter and officer in the organization.

The training for a recruit firefighter will consist of theory, backed with appropriate skills development, which follows as closely as possible to the new information being presented. The theory and practical skills development combination will be addressed on an incremental basis for maximum retention and skill development. This approach will provide maximum confidence in the recruit and reduce the risk of injury.

At the conclusion of this course, the recruit firefighter will be tested to the Firefighter II level and will return to his/her fire department. After local orientation, the firefighter will be able to be assigned to a firefighting company.

The course also includes: Hazardous Materials — First Responder Awareness and Operational; Physical Fitness; Confined Space Rescue; Medical Response Technician — Defibrillator (MRT-D); High Angle Rescue; ICS; Night Firefighting and all applicable OSHA standards.

All students are required to lodge at the CFA for week #10, the last week of class. Full protective clothing, including SCBA with one spare cylinder, is required.

It is required that each student have access to the reference manuals listed on page 83.

Prerequisites: None
Class Hours: 400
FM Credit: None
EMS-I Credit: None

Firefighting Programs

Firefighter II

Firefighter II is the second of two levels of firefighter training which prepares the student for firefighter certification. This complete course (eighteen subjects) ranges from fire behavior to fire suppression and Hazardous Materials First Responder Operations. Each class meets eight hours per day for twenty-one days.

This course requires hands-on training along with classroom instruction.

Full protective clothing, including SCBA with one spare cylinder, is required.

It is required that each student have access to the reference manuals listed on page 83.

Prerequisites: Applicants must be certified Firefighter I and have completed Hazardous Materials Awareness. Proof must be submitted with application.

Class Hours: 168

FM Credit: 52 Hours

EMS-I Credit: None

Chimney Fires

This course is designed to instruct the proper procedures to be used at a chimney fire. This simple routine fire can become a disaster if not handled properly from the start. The “reading” of a chimney before a fire occurs will be covered in detail.

Topics covered will include: construction of chimneys; why fires start; extinguishment; inspection after the fire; and firefighter safety.

Prerequisites: None

Class Hours: 3

FM Credit: 3 Hours

EMS-I Credit: None

Firefighting Programs

Commercial Vehicle Fires

This two-day course will introduce the student to the different types of commercial vehicles, including: small and large commercial trucks; diesel engines; tractor trailers; heavy construction equipment; propane-fueled equipment; and diesel electric engines for railroad use.

Students will also be shown the specific hazards when these vehicles are involved in fire; how to size-up a commercial vehicle incident; and placard recognition. Time will be spent reviewing specific incidents and how to handle them correctly.

Practical skills will include live firefighting of a commercial vehicle fire.

Full protective clothing, including SCBA and one spare cylinder, is required.

Prerequisites: Applicants must have completed Hazardous Materials Awareness and be certified Firefighter I or have been a member of a fire department on or before July 1, 1977. Proof must be submitted with application.

Class Hours: 16

FM Credit: None

EMS-I Credit: None

Electricity: Dead or Alive

This course is designed to address one of the most common hazards to the firefighter on the fireground-Electricity.

Course content will outline how commercial electrical systems work; primary vs. service wires; precautions in moving downed wires; danger in removing meters; and clarification of techniques for applying water to energized electrical equipment.

Prerequisites: None

Class Hours: 3

FM Credit: 3 Hours

EMS-I Credit: 1.5 Hours

Firefighting Programs

Elevator Rescue for Fire Departments

This two-day course will familiarize fire service personnel with safe operations involving passenger and freight elevators. High angle environment protection, electrical and mechanical exposure reduction and fire suppression tactics will be discussed.

Upon successful completion of this course the student will be able to understand the differences between electric traction and piston operated elevators; evaluate an incident as emergency or non-emergency; gain access to the hoistway and car using non-destructive methods; to control car movement by top and independent service methods; and develop safe standard operating procedures for elevator use during rescue and fire suppression.

Coveralls or other clothing that may be exposed to grease, oil and the usual dirt found in shafts and pits should be available for the practical component.

Certificates will be issued upon successful completion of a written exam.

Prerequisites: None
Class Hours: 16
FM Credit: None
EMS-I Credit: None

Fire Department Response to Carbon Monoxide Emergencies

This three-hour course will cover the information needed by a fire department when responding to carbon monoxide alarms and to carbon monoxide at the fire scene.

Topics include: the identification and hazards of carbon monoxide; a description of the techniques for investigating alarms; and detecting the presence of this odorless, tasteless gas.

Prerequisites: None
Class Hours: 3
FM Credit: 3 Hours
EMS-I Credit: None

Firefighting Programs

Firefighter Safety and Survival

This is an intensive two-day course on firefighter survival training.

Using scenarios based on real-life incidents, this course identifies problems that were encountered, and offers possible solutions for the safe and efficient removal of members in distress. Safely removing a trapped or unconscious firefighter from within a burning building can be a labor-intensive operation.

Time will be spent on self rescue procedures such as low profile ladder egress, and personal rope bail-out procedures giving the participant options if caught in a rapidly deteriorating situation.

Full protective clothing, including SCBA with one spare cylinder, is required.

Prerequisites: Applicants must be Certified Firefighter I or have been a member of a fire department on or before July 1, 1977. Proof must be submitted with application.

Class Hours: 16

FM Credit: None

EMS-I Credit: None

Flashover Survival

This one-day intensive course deals with fire behavior and firefighter survival training. Students will learn to recognize the signs of a flashover and participate in a controlled flashover. A flashover simulator will be utilized for this live fire training.

Full protective clothing, including SCBA with one spare cylinder, is required.

Prerequisites: Applicants must be Certified Firefighter I or have been a member of a department on or before July 1, 1977. Proof must be submitted with application.

Class Hours: 8

FM Credit: None

EMS-I Credit: None

Firefighting Programs

Forcible Entry

This three-hour course is designed for firefighters, fire officers and rescue personnel to help improve tactical operations at fires and emergencies.

Special emphasis will be placed upon the unique problems of the urban fire department.

Topics will include: size-up; fireground tactics and procedures; conventional forcible entry; “through-the-lock” entry; power tools; building construction; and tactical ventilation.

Prerequisites: None

Class Hours: 3

FM Credit: None

EMS-I Credit: None

Handling Elevator Emergencies

This three-hour course is offered to assist fire departments in handling emergencies in stalled elevators and in using elevators during fires.

Presentation topics will cover: following a procedure to safely remove passengers from stalled elevators; elevator equipment; methods of entering the elevator; use of the fire department control key; and using the elevator during fire emergencies.

Prerequisites: None

Class Hours: 3

FM Credit: None

EMS-I Credit: None

Firefighting Programs

Managing Line-of-Duty Deaths

In understanding the impact that a “line-of-duty” death has on the members of a fire department and the fire service in general, this three-hour course will outline the importance of planning for such incidents.

Topics covered include: the importance of writing a protocol; communications with the media and information releases; resources available to the department; Critical Incident Stress Debriefing; and the needs of the families and department members which need to be addressed.

Prerequisites: None

Class Hours: 3

FM Credit: None

EMS–I Credit: None

Mobile Home Fires

All mobile home fires do not have to be a complete loss. This course will present the significant and unique problems associated with mobile home fires.

Time will be spent reviewing construction features, federal regulations, burning characteristics, suppression/rescue problems, and the pre-planning of mobile home parks.

Prerequisites: None

Class Hours: 3

FM Credit: 2 Hours

EMS–I Credit: None

Firefighting Programs

Positive Pressure Ventilation

This course provides an overview of a relatively new tactic in fighting structural fires. Class time will be spent reviewing strategic techniques of Coordinating Attack and PPV placement, as well as discussing the various types of available equipment.

This course will answer most officers' questions about using this new tool to reduce firefighter fatigue.

A number of demonstrations of positive pressure ventilation are included in the afternoon session.

Full protective clothing (no SCBA) is required.

Prerequisites: None
Class Hours: 8
FM Credit: None
EMS-I Credit: None

SCBA Maze

The objective of this two-day course is to review SCBA, respiratory hazards, donning SCBA and safety procedures. The firefighter will be capable of doing routine work on the fireground using SCBA.

After a short classroom session, students will develop a number of skills then practice those skills in the MAZE.

The MAZE includes such items as open floor joists, confined space, windows and limited access.

Full protective clothing, including SCBA with one spare cylinder, is required.

Prerequisites: None
Class Hours: 15
FM Credit: None
EMS-I Credit: None

Firefighting Programs

Smoke Divers

This physically challenging two-day course was developed to raise the skills of the advanced SCBA user.

This is not a beginner's course.

With the emphasis being on physical fitness and readiness, this course will start with a brief classroom session and then move to the training ground. The Connecticut Fire Academy Mobile Training Maze will be used during the course.

Full protective clothing, including SCBA and one spare cylinder, is required.

Participants are encouraged to bring exercise clothing, running shoes and/or sneakers.

Prerequisites: Applicants must be certified Firefighter I or have been a member of a fire department on or before July 1, 1977. Proof must be submitted with application.

Class Hours: 16

FM Credit: None

EMS-I Credit: None

Sprinklers

This complete two-day course is designed for the firefighter with little or no understanding of automatic sprinkler systems.

Course content will trace the historical development of sprinklers and provide information on types of systems; the care, maintenance and inspection of sprinkler systems; and fire department operations required to support sprinkler systems in sprinklered occupancies.

In the second half of the course, students will cover the basic design of automatic sprinkler systems; water supply; materials; pipe schedule and hydraulic systems; water flow tests; sprinkler plan review; and outside protection. The Connecticut Fire Academy Sprinkler Lab will offer each student the opportunity to compare and contrast types of systems and witness their operating characteristics.

Prerequisites: None

Class Hours: 15

FM Credit: 15 Hours

EMS-I Credit: None

Firefighting Programs

Structural Firefighting

This is a two-day course involving “hands on” live fire training for fire department members.

The course will begin with a number of evolutions to build skills and knowledge of breathing apparatus, oneself and one’s protective clothing.

Students will then move out to the burn building where the remainder of the time will be spent fighting fires. Evolutions will include: fighting fires, performing ladder company operations, and rescue work.

Full protective clothing, including SCBA with one spare cylinder, is required.

Prerequisites: Applicants must be certified Firefighter I or have been a member of a fire department on or before July 1, 1977. Proof must be submitted with application.

Class Hours: 16

FM Credit: None

EMS-I Credit: None

Vehicle Fires

This one-day course will address the hazards encountered while fighting vehicle fires.

The morning session will include: bumpers; batteries; pollution control; interiors; plastic gasoline tanks; air bags; vehicle leveling systems and their reaction. The afternoon session will be spent on live vehicle fire training.

Full protective clothing, including SCBA with one spare cylinder, is required.

Prerequisites: Applicants must be certified Firefighter I or have been a member of a fire department on or before July 1, 1977. Proof must be submitted with application.

Class Hours: 8

FM Credit: None

EMS-I Credit: None

Fire Officer Programs

First Line Company Supervision — Fire Officer I

First Line Company Supervision is a comprehensive course designed to strengthen the new or aspiring fire officer's supervisory and leadership skills. Emergency and routine duties of the company officer will be discussed.

Topics include: human resource management; community and government relations; public education; safety; inspection and investigation; and emergency service delivery. A fire command simulator will be used in the emergency service delivery section of the course.

It is required that each student have access to the reference manuals listed on page 83.

Prerequisites: None

Certification

Prerequisites: To be eligible to take the Fire Officer I exam applicants must be certified to the Firefighter II level, or have been a member of a fire department on or before July 1, 1977. Proof must be submitted with application.

Class Hours: 96

FM Credit: 33 Hours

EMS-I Credit: None

Fire Officer Programs

Multi-Company Supervision — Fire Officer II

Multi-Company Supervision is a seven-day course designed for those fire officers or aspiring officers that need the skills to supervise multiple companies. Generally, this level involves the oversight of single company supervisors involved in the operational aspects of a fire station.

Topics covered in this course include: group behavior; employee evaluation; communication skills; report preparation; pre-fire and operational planning; inspections; command of hazardous materials incidents; safety; and emergency services delivery. A fire command simulator will be used in the emergency delivery section of this course.

It is required that each student have access to the reference material listed on page 83.

Prerequisites: None

Certification

Prerequisites: To be eligible to take the Fire Officer II exam applicants must be certified to the Fire Office I and Fire Service Instructor I level. Proof must be submitted with application.

Class Hours: 56

FM Credit: 46 Hours

EMS-I Credit: None

Fire Officer Programs

UNDER
DEVELOPMENT

Organizational Administration — Fire Officer III

Organizational Administration is a non-traditional course offered to individuals currently holding or aspiring to the rank of shift commander or chief officer. It is designed to enhance the skills of the chief officer by providing a group of peers with a progressive learning environment.

This semi-independent study course includes a balance of regularly scheduled peer group discussion sessions and development of individual projects. Areas covered in the discussions and projects will include human resource management, community relations, administration, inspection and investigation, emergency services delivery and safety.

Areas specifically covered will include personnel assignments, hiring and promotional procedures, professional development, community awareness programs, budget management, recordkeeping systems, pre-incident planning, public education planning, multi-agency incident planning and accident and injury protection. A mentor will be provided to the participants for discussion and guideline purposes.

Projects need not necessarily be created especially for this course. Projects previously prepared by the participant may be submitted. As such, credit for life experiences to date will be available.

There is no final examination connected with this course. Instead, each candidate will present their project portfolio to an oral examination panel consisting of Connecticut fire service leaders.

The reference book used for this course will be the current edition of the Fire Chief's Handbook.

Prerequisites: Preference will be given to those currently serving as a shift commander, chief officer or those having at least three years of company officer experience.

Certification

Prerequisites: Fire Officer II.

Class Hours: It is expected that approximately 40 hours of discussion group time will be required in addition to project preparation and presentation time.

FM Credit: Unknown

EMS-I Credit: Unknown

Fire Officer Programs

UNDER
DEVELOPMENT

Executive Management — Fire Officer IV

Executive Management is oriented toward fire chiefs. It is a semi-independent study course consisting of a balance of regularly scheduled peer group discussion sessions and the development of individual projects. Areas covered in the discussions and projects will focus heavily on human resource management, administration, multi-agency emergency services delivery and safety.

Areas specifically covered will include: grievance administration, training and educational goal setting and requirements planning, employee assistance programs, incentive programs, community event planning, long range planning, and civil disturbance and disaster planning. A mentor will be provided to the participants for discussion and guideline purposes.

Projects need not necessarily be created especially for this course. Projects previously prepared by the participant may be submitted. As such, credit for life experiences to date will be available.

There is no final examination connected with this course. Instead, each candidate will present their project portfolio to an oral examination panel consisting of Connecticut fire service leaders.

The reference book used for this course will be the current edition of the Fire Chief's Handbook.

Prerequisites: Preference will be given to those currently serving as a fire chief or those having at least three years of shift commander or other chief officer experience.

Certification

Prerequisites: Fire Officer III.

Class Hours: It is expected that approximately 40 hours of discussion group time will be required in addition to project preparation and presentation time.

FM Credit: None

EMS-I Credit: None

Fire Officer Programs



Building Construction: Wood and Ordinary

This two-day National Fire Academy course provides an introduction to basic construction principles and to the specific characteristics of wood and ordinary construction as they pertain to the fire service.

The primary emphasis of the course is to improve the firefighter's ability to ensure personal safety by recognizing common causes and indicators of failure or other hazards related to building construction.

An understanding of the course material will improve operational effectiveness as the firefighter will be able to better predict the overall reaction of a building to fire conditions.

Prerequisites: None
Class Hours: 16
FM Credit: 12 Hours
EMS-I Credit: None



Building Construction: Non-Combustible

This two-day National Fire Academy course provides an introduction to the special characteristics of non-combustible and fire-resistive construction as they pertain to the fire service.

The primary emphasis of the course is to improve the fire officer's and senior firefighter's ability to ensure firefighter safety by recognizing common causes and indicators of failure and other hazards related to building construction or contents.

An understanding of the course materials will improve operational effectiveness as the fire officer and senior firefighter will be able to better predict the overall reaction of a building to fire conditions.

Prerequisites: None
Class Hours: 16
FM Credit: 12 Hours
EMS-I Credit: None

Fire Officer Programs



Conducting Fire Prevention Inspections

This two-day National Fire Academy course is designed for the firefighter, fire officer and prospective fire prevention personnel.

The course will cover the following topics: preparing for an inspection; common electrical hazards; inspection of heating and cooking equipment; grease duct and ventilation systems; sprinkler systems; and signaling devices.

Prerequisites: None
Class Hours: 16
FM Credit: 12 Hours
EMS-I Credit: None

Engine Company Attack Operations

This one-day course describes and demonstrates basic company strategies. The information presented concentrates on utilizing strategic planning to help develop effective operating procedures that the students can tailor to their departments.

The course explains theories of direct and indirect attacks while using research which indicates that many tactics presently used for interior attacks may intensify burning and elevate risks to firefighters. (This course will offer intensive instruction in safety and increasing flows on handlines with reduced staffing.)

Hands-on instruction with low-pressure combination nozzles, smooth bore nozzles and flow meters will reinforce the students' knowledge.

Full protective clothing (no SCBA) is required.

Prerequisites: None
Class Hours: 8
FM Credit: None
EMS-I Credit: None

Fire Officer Programs

Fire Department Operations In High Rise Buildings

This course is designed to orient the fire officer to the hazards associated with emergency operations in high rise buildings. Course content includes an overview of building design and construction; fire protection features; and pre-fire planning. Other topics include: fire control; occupant protection; incident command; equipment; and staffing requirements.

This interactive course provides officers with an opportunity to participate in an Incident Management organization that will challenge the student to implement effective fireground management decisions. Utilizing the National Incident Command System, students will develop a response strategy and implement tactical considerations. The Command Simulator will be used to augment the emergency during the table-top emergency management exercise.

Prerequisites: None

Class Hours: 16

FM Credit: None

EMS-I Credit: None

Fire Officer Programs

Fire Department Safety Officer

This four-day course examines the Fire Department Safety Officer's role with the identification, evaluation and implementation of policies and procedures that affect health and safety aspects for emergency responders.

Through the use of case studies, small group workshops, and instructor facilitation of safety concepts, participants will gain a thorough understanding of risk management, wellness issues, incident safety functions, regulatory requirements and their impact on increasing the survivability of fire department personnel.

It is required that each student have access to the reference manuals listed on page 84.

Prerequisites: None

Certification

Prerequisites: Applicants must be certified Fire Officer I, or have been a Fire Officer with a fire department on or before July 1, 1986. Proof must be submitted with application.

Class Hours: 32

FM Credit: None

EMS-I Credit: None

Fire Officer Programs



Incident Command System (ICS)

This two-day course is designed to provide fire officers and managers the information needed to use and implement the Incident Command System (ICS).

The course is designed to meet the needs of company officers and managers who have responsibilities for the use, deployment and implementation of the Incident Command System, as well as for those who function within a departmental Incident Command System.

Course topics include: the needs of the incident manager; the structure and expandability of ICS; and the command skills needed by departmental officers to effectively use ICS guidelines

Scenario practice on the application of ICS provides guidelines and resource information for setting up and implementing a departmental Incident Command System.

Prerequisites: None
Class Hours: 16
FM Credit: 12 Hours
EMS-I Credit: None



Incident Safety Officer

This two-day course examines the safety officer's role at emergency response situations. Course content will focus specifically on the safety officer's role within an Incident Command System.

Upon completion of this course, the participant will be able to identify and analyze safety concerns as they relate to all-hazards scene evaluation, and will be able to communicate recommended solutions to the command authority.

Prerequisites: None
Class Hours: 16
FM Credit: None
EMS-I Credit: 3 Hours

Fire Officer Programs



Introduction to Volunteer Emergency Services Management

This two-day National Fire Academy course is designed for those individuals whose responsibility is to manage any of the facets of the volunteer emergency services organization. Introduction to Volunteer Emergency Services Management demonstrates the basic management techniques needed to effectively administer the volunteer emergency services organization. Participants will explore the transition a member has to make when he/she steps into the role of manager in his/her organization. Through the use of small group activities, the participants will learn and apply the basic principles of communication, motivation, problem solving, decision making, and the management process to accomplish their organization's mission and goals.

This course will give the participant an overview of management principles as they relate to the volunteer emergency services, and will provide them the foundation upon which to build their management skills.

Target Audience: Emergency response personnel who have recently been appointed to a management position in their volunteer emergency services organization (administrative officers, line officers, board of directors, standing committee chairpersons, etc.).

Prerequisites: None
Class Hours: 16
FM Credit: 12 Hours
EMS-I Credit: 4 Hours

Fire Officer Programs

Leadership I: Strategies for Company Success *Decision Making, Problem Solving, Running Meetings*



This two-day course addresses techniques and approaches to problem solving, identifying and assessing the needs of the company officer's subordinates, running meetings effectively in the fire service environment, and decision making for the company officer.

Prerequisites: None
Class Hours: 16
FM Credit: None
EMS-I Credit: None

Leadership II: Strategies for Personal Success *Multiple Roles, Enhancing Your Personal Power Base, Ethics, Creativity*



This two-day course is designed to meet the needs of the company officer, and to provide the participant with basic skills and tools needed to perform effectively as a leader in the fire service environment. Leadership II addresses ethics, use and abuse of power at the company officer level, creativity in the fire service environment, and managing the multiple roles of the company officer.

Prerequisites: None
Class Hours: 16
FM Credit: None
EMS-I Credit: None

Fire Officer Programs

Leadership III: Strategies for Supervisory Success *Situational Leadership, Delegating, Coaching, Discipline*



This two-day course addresses when and how to delegate to subordinates, assessing personal leadership styles through situational leadership, when and how to discipline subordinates, and coaching/motivating techniques for the company officer.

Prerequisites: None
Class Hours: 16
FM Credit: None
EMS–I Credit: None

Legal Problems in the Fire Service

This course is intended to orient the fire officer to the rights and responsibilities of emergency services workers. Topics include: emergency services liabilities; apparatus response; fire department organization; and fire service regulations.

The course provides a general overview of such issues as the organization of fire departments, mutual aid and issues such as rights of entry, inspections, and the Good Samaritan law.

Prerequisites: None
Class Hours: 4
FM Credit: None
EMS–I Credit: None

Fire Officer Programs

Managing Company Tactical Operations (MCTO) — Preparation



This two-day course is the first of three courses designed to develop the Company Commander's supervisory and management capabilities in structural firefighting operations. This course examines the critical elements of pre-incident preparation for structural firefighting operations.

Topics include: the Company Commander's role in fireground operations; company readiness; the communications process; building construction; fire behavior; and the process of pre-incident planning. Subsequent courses address Command Decision Making, Structural Firefighting Tactics, and Structural Firefighting Simulation.

Prerequisites: None

Class Hours: 16

FM Credit: None

EMS-I Credit: None

Managing Company Tactical Operations (MCTO) — Command Decision



This two-day course is the second of three programs designed to develop the company officer's supervisory and management capabilities in structural firefighting operations.

This course examines the critical elements of situational assessment and decision making for structural firefighting operations.

Topics include: the command sequence; size-up with particular focus on predicting fire behavior; assessment of resource requirements; critical, strategic and tactical decisions; and action planning.

Subsequent courses address structural firefighting tactics and structural firefighting simulation.

Prerequisites: None

Class Hours: 16

FM Credit: None

EMS-I Credit: None

Fire Officer Programs

Managing Company Tactical Operations (MCTO) — Tactics



This two-day course is the third of the MCTO series, and is designed to develop the company commander's supervisory and management capabilities in structural firefighting operations. The focus of the course is on residential (single- and multiple-family) and small commercial occupancies. Key contents include: ventilation; rescue; fire control; property conservation; and support activities. Simulation provides an opportunity to apply the principles of strategy and tactics to fire incidents in private dwellings. The final course in this curriculum provides an opportunity for integrated application through structural firefighting simulation in a variety of structure and occupancy types.

Prerequisites: None

Class Hours: 16

FM Credit: None

EMS-I Credit: None

Managing in a Changing Environment



This two-day course is designed to help the fire officer understand and manage change in economic, social, political and technological environments. It is the second of two courses in the subject area of mid-level management which cover the skills and techniques mid-level managers will need in order to provide leadership and direction for their departments.

Content includes an overview of significant influences affecting fire service operations. Participants will have the opportunity to identify and relate these influences to their personal and professional situations, as well as to practice strategies for managing changes resulting from those influences.

Prerequisites: None

Class Hours: 16

FM Credit: None

EMS-I Credit: None

Fire Officer Programs

Planning and Developing Fire Department Budgets

This one-day course, taken from part of the fire officer series, is designed to assist the fire officer or manager in the planning and development of a fire department budget. This course is also for those who aspire to go through the ranks of their department or have the responsibility for budgeting.

The course includes: steps in the budgeting process; information gathering; evaluation of cost vs. benefit of the programs within the budget; types of budgets; and the use of computers and software in the budgeting process.

Prerequisites: None
Class Hours: 8
FM Credit: None
EMS-I Credit: None

Preparing for Promotional Interviews

Have you ever wondered what you should wear, how to act or how to succeed in an oral interview? If so, this one-day course is for you.

Based on information from instructors who sit on oral boards on a regular basis, this course reviews techniques on how to prepare and present yourself to an oral panel.

This course is centered on “line officer” interviews; however, the techniques of preparation also apply for entry and administration levels. The afternoon session will give the participant an opportunity to try his/her skills at a mock oral interview.

Prerequisites: None
Class Hours: 8
FM Credit: None
EMS-I Credit: None

Fire Officer Programs

Rural Tactical Operations

This two-day course is designed to give the participant an understanding of the concepts of firefighting as they apply to rural tactical operations and considerations.

Topics include: large response districts; limited manpower and water supply; relay pumping; large diameter hose; tanker shuttles; mutual aid and communications; lack of ladder company support; special apparatus and equipment; SOP's; and pre-planning.

Prerequisites: None

Class Hours: 16

FM Credit: None

EMS-I Credit: None

Shaping the Future



This two-day course is designed to help the fire officer identify, quantify and solve organizational problems. It will also help the fire officer to develop, communicate and implement decision options.

This is the first of two courses in the subject area of mid-level management which covers the skills and techniques mid-level managers will need to provide leadership and direction for their departments.

This course will be presented in four modules. The first module focuses on identifying opportunities and/or problems. Topics include: environmental scanning; paradigm shifts; and methods for reframing problems accurately. The second module deals with group problem-solving techniques. The third module explains the need to quantify, justify and communicate decisions so they will be implemented effectively.

Managing change will be discussed in the final module, with topics that include: why people resist change, how to overcome resistance to change, and ways to monitor and evaluate change before, during, and after implementation.

Prerequisites: None

Class Hours: 16

FM Credit: None

EMS-I Credit: None

Fire Officer Programs

Strategy and Tactics

This two-day course is designed to develop fireground skills for the company officer. This basic fireground control course is essential to all company officers and senior firefighters.

Topics include: the role of the company officer; engine and truck company operations; coordination and application of tactical operations; fire and alternate fire attack; manpower utilization; building construction; the Incident Command System; and firefighter safety.

Prerequisites: None

Class Hours: 16

FM Credit: None

EMS-I Credit: None

Streetwise for Fire Officers

This two-day course for fire officers is designed to refine incident management and supervisory skills.

Participants will be actively involved in situational leadership roles designed to test their supervisory and command skills. Intergroup critiquing will provide all participants with the opportunity to analyze and respond to those everyday supervisory challenges that occur in the fire and emergency service.

Prerequisites: None

Class Hours: 16

FM Credit: None

EMS-I Credit: None

Fire Police Programs

Fire Police Procedures

This course is designed for fire police personnel who are assigned to traffic duty at the scene of an emergency.

Topics include: Connecticut statutes; responsibilities; traffic duties; signal placement; equipment; and mutual aid pacts.

The course includes many group exercises that are thought-provoking for fire police personnel.

Prerequisites: None
Class Hours: 3
FM Credit: None
EMS-I Credit: None

Advanced Fire Police Procedures

This one-day course is designed to build on the basic fire police course offered by the Commission.

Topics will include: advanced traffic procedures; arson awareness; hazardous materials awareness; and safety awareness at the scene of an emergency.

Time will be spent on group exercises that fire police personnel will encounter in the course of their duties.

Prerequisites: None
Class Hours: 8
FM Credit: None
EMS-I Credit: None

Hazardous Materials Programs



Chemistry of Hazardous Materials

This ten-day course provides the basic knowledge required to evaluate the potential hazards and behaviors of hazardous materials. It also reviews the underlying reasons for the chemical behavior of hazardous materials and is designed to improve decision-making, safety operations and handling techniques. The course is heavily chemistry oriented.

This course is targeted at State and Municipal Emergency Response Personnel responsible for analysis, management and fire prevention inspection where knowledge of the chemical behavior of materials is essential. This course is a prerequisite for the National Fire Academy Operating Site Practices course. Students should make appropriate arrangements to be present at all sessions, as total attendance is mandatory.

Classes will be held from 8:30 AM – 6:30 PM or longer each day.

Prerequisites: None
Class Hours: 96
FM Credit: 96 Hours
EMS-I Credit: None

Hazardous Materials Programs

Decontamination (Decon)

Decontamination, the removal of contaminants from people, animals and equipment leaving the contamination area, is a basic part of HazMat. It, in fact, safeguards the integrity of the “Hot” zone as well as ensures that personnel are protected. This course will cover both classroom as well as field “hands-on”. Students are expected to take active roles in the field activities. The morning session will cover the standard EPA Decon as well as compatibility requirements. The afternoon session will cover advanced and alternative tactical approaches — use of sewers, firefighter decon, influence of physical properties, and satisfying medical requirements while maintaining the mission.

Prerequisites: Applicants must have completed HazMat Operational. Proof must be submitted with application.

Class Hours: 8

FM Credit: None

EMS–I Credit: 1.5 Hours

Emergency Response to Terrorism: Basic Concepts (ERT:BC)



This two-day course is designed to provide students with a general understanding and recognition of terrorism, defensive considerations (biological, nuclear, incendiary, chemical, and explosive), as well as command and control issues associated with criminal incidents. When an incident occurs, the student will be able to recognize and implement self-protective measures; secure the scene; complete appropriate notification to local, state, and federal authorities; and assist in completing a smooth transition from emergency to recovery and termination of operations.

Prerequisites: None

Class Hours: 16

FM Credit: 16 Hours

EMS–I Credit: 6 Hours

Hazardous Materials Programs

Emergency Response to Terrorism: Self-Study



This self-study course is designed to provide an introduction to the basic concepts for first-responders at the scene of a potential terrorist incident. To master the basics more thoroughly, it is recommended that the 16-hour “Emergency Response to Terrorism: Basic Concepts” be completed. This course includes five modules with various annexes to assist the student. A course application and final exam are also included which are submitted directly to the National Fire Academy.

Prerequisites: None
Class Hours: 0
FM Credit: None
EMS–I Credit: None

Responding to the Terrorist Threat: Managing the Incident

This one-day course is designed to provide the emergency responder with basic awareness level information concerning the terrorist threat. Areas that will be briefly covered include: legal requirements, self-protective measures, introduction to ICS, personal protective equipment and Decon, and incident management. A student exercise is included to allow the student to put together the materials presented in the course.

Prerequisites: None
Class Hours: 8
FM Credit: None
EMS–I Credit: None

Hazardous Materials Programs

Responding to the Terrorist Threat: An Introduction

This half-day course is designed to provide municipal leaders, boards of education and emergency responders with an introduction to the threat of terrorism. This threat affects communities across the U.S., as well as the international community. All jurisdictions (suburban, urban, and rural) are at risk. Terrorists have proven they have the capability and the knowledge to strike anywhere.

Prerequisites: None
Class Hours: 4
FM Credit: None
EMS-I Credit: None

Hazardous Materials First Responder Awareness

This one-day course is designed to meet the mandatory OSHA 1910.120 (q) training requirements for “Hazardous Materials First Responder Awareness Level”. The goal of this course is to provide first responders (Fire, Police and EMS), who in the course of their normal duties may be the first on the scene of a Hazardous Materials incident, with the competencies to respond in a safe manner. Personnel at this level do not take any further action other than to recognize that a hazard exists, call for trained personnel, and secure the area.

This course focuses on the initial tasks to be taken by response personnel responding to a Hazardous Materials incident. These initial tasks include: recognizing and identifying Hazardous Materials; initiating command and control activities collection; interpretation of hazard and response information; and initiating the emergency response plan.

Prerequisites: None
Class Hours: 8
FM Credit: 4 Hours
EMS-I Credit: None

Hazardous Materials Programs

Hazardous Materials First Responder Operational

This four-day course is designed to meet the NFPA 472 Standard, and OSHA 29 CFR 1910.120 for “Hazardous Materials First Responder Operational Level.” Class time will be spent on incident command, safety awareness, risk assessment (through the use of monitoring equipment), spill control (diking and damming), personal protective equipment and decontamination. The last day will involve students in an exercise utilizing the skills covered in the classroom.

Full protective clothing, including SCBA with one spare cylinder, is required.

Prerequisites: Applicants must have completed any one of the following courses: Awareness (8 hours); Basic Recognition of Hazardous Materials (15 hours); NFA Initial Response to Hazardous Materials Incidents — Concepts and Awareness/Concepts Implementation (12 hours), or the combination of Recognizing and Identifying Hazardous Materials (4 hours) and Hazardous Materials Incident Analysis (12 hours). Proof must be submitted with application.

Class Hours: 32

FM Credit: 12 Hours

EMS–I Credit: None

Hazardous Materials Programs

Hazardous Materials Operational for Emergency Medical Services (EMS)



This two-day course is designed to meet the training standards specified in OSHA 29 CFR 1910.120 and NFPA 473. This course will address the proper methods of scene evaluation, information gathering, preparation, patient reception, treatment, reporting and safe transport of the contaminated victim.

Prerequisites: Applicants must have completed any one of the following courses: Awareness (8 hours); Basic Recognition of Hazardous Materials (15 hours); NFA Initial Response to Hazardous Materials Incidents — Concepts and Awareness/Concepts Implementation (12 hours); or the combination of Recognizing and Identifying Hazardous Materials (4 hours) and Hazardous Materials Incident Analysis (12 hours). Proof must be submitted with application.

Class Hours: 16

FM Credit: 6 Hours

EMS-I Credit: 3 Hours

Hazardous Materials Programs

Hazardous Materials Operational Refresher

This one-day course, partly funded through a federal grant from HMEP, is a “hands-on” review/refresher class for those who are trained to the Hazardous Materials Operational Level. It is designed for those who respond to hazardous materials incidents and operate at the Hazardous Materials Operational Level.

Topics include: review of the eight-step process; risk assessment; changes to the placard identification system; and the improvement of basic recognition skills. All activities are designed to meet the 1992 NFPA 472 and OSHA 1910.120 objectives.

Full protective clothing, including SCBA with one spare cylinder, is required.

Prerequisites: Applicants must have completed Hazardous Materials Operational. Proof must be submitted with application.

Class Hours: 8

FM Credit: 6 Hours

EMS-I Credit: None

Hazardous Materials Programs

Hazardous Materials Technician

This ten-day course is designed for Hazardous Materials Team members and will meet NFPA 472 Technician Standard and OSHA 29 CFR 1910.120 “Technician Level.”

The course will introduce the technician to hazardous materials chemistry with a basic understanding of the atom and its properties.

Time will also be spent helping the technician to understand his/her role in a command system. Detection equipment will be covered, both in what is available and how to utilize it. Small spill control will be discussed and demonstrated using plugging and patching techniques, as well as drum overpacking.

Substantial “hands-on” time will be spent on protective clothing and equipment; levels of protection; types of suits; donning/doffing procedures; plugging and diking; decontamination; and metering.

In addition, time will be spent dealing with the various classes of hazardous materials, techniques for dealing with gaseous products in all stages, flammable liquids detection, mitigation and vapor suppression.

Some time will be spent on incident command management operations.

Full protective clothing, including SCBA with one spare cylinder, is required.

Prerequisites: Applicants must have completed Hazardous Materials First Responder Operational. Proof must be submitted with application.

Certification

Prerequisites: It is required that each student have access to the reference manuals listed on page 84.

Class Hours: 96

FM Credit: 17 Hours

EMS–I Credit: None

Hazardous Materials Programs

Hazardous Materials Technician Refresher

This course is a two-day “hands-on” review/refresher class for participants who are trained to the Hazardous Materials Technician Level. It is designed for technicians who actively participate in hazardous materials response and would like to practice the skills in a series of simulated scenarios. This course will provide the opportunity to analyze various incidents, plan, implement and evaluate the response activities for these incidents. All activities are designed to meet the NFPA 472 objectives.

Full protective clothing, including SCBA with one spare cylinder, is required.

Prerequisites: Applicants must be certified to the Hazardous Materials Technician Level. Proof must be submitted with application.

Class Hours: 16

FM Credit: 3 Hours

EMS–I Credit: None

LPG Emergencies

Classroom lecture and hands-on training are included in this two-day course. The first day is spent discussing liquefied petroleum gas, formation, transportation, storage and use. The afternoon will be spent outside handling LPG leaks. The second day is spent on techniques used in controlling ignited leaks. Outside evolutions include: fires involving gas grills, and “100 lb.” and larger vertical tanks.

Full protective clothing, including SCBA with one spare cylinder, is required.

Prerequisites: None

Class Hours: 15

FM Credit: 12 Hours

EMS–I Credit: None

Instructor Programs

Education Methodology — Fire Service Instructor I

This seven-day course content is designed to meet the first level of instructor as identified by the National Professional Qualifications Standards.

Class time is spent on instructor roles, audience analysis, communication skills, the writing of objectives, simulations and evaluation methods.

Each student is required to prepare and deliver both a 10-minute and a 20-minute classroom presentation.

It is required that each student have access to the reference manuals listed on page 83.

Prerequisites: None

Certification

Prerequisites: The Fire Service Instructor I exam is open only to those who are certified to the Firefighter II level or to firefighters who have been members of a fire department on or before July 1, 1977. Proof must be submitted with application.

Class Hours: 56

FM Credit: 48 Hours

EMS-I Credit: None

Course Development and Design — Fire Service Instructor II

Successful completion of course development and design assignments, audiovisual development and a certification examination will qualify the candidate for the “Certified Fire Service Instructor II” designation.

Course topics include: design analysis; course development; course design; goals and objectives writing; preparation of instructional materials; evaluation methods; and implementation considerations.

Students will develop a lesson plan format and present the course to the class.

It is required that each student have access to the reference manuals listed on page 83.

Prerequisites: None

Certification

Prerequisites: The Fire Service Instructor II exam is open only to those who are certified to the Instructor I level. Proof must be submitted with application.

Class Hours: 48

FM Credit: None

EMS–I Credit: None

Creative Teaching Techniques

This one-day course, developed by the Fire Academy Instructor-Trainers, is designed for the fire instructor and fire officer who train or drill from prepared lesson plans. This course will present some new and creative ideas to keep students motivated, and to increase learning by expanding the instructor’s use of the lesson plan. Instructors will be taught that it is possible to teach outside the guidelines of the lesson plan without missing the main point of the lesson objectives.

Prerequisites: None

Class Hours: 8

FM Credit: None

EMS–I Credit: None

Instructor Programs

Increasing Instructor Competencies

This course is designed to give fire service instructors the latest information concerning effective instructional methodologies.

Topics include: understanding adult learners, computer technology, using audiovisual aids, teaching for retention and understanding, reading comprehension strategies, questioning techniques, conferencing skills, tutoring, observation skills, rewriting lesson plans and other methods to increase student learning. Training in context for practical skills development will also be discussed.

**UNDER
DEVELOPMENT**

Prerequisites: None

Class Hours: Unknown

FM Credit: Unknown

EMS-I Credit: None

LEPC — Blueprint for Community Emergency Management

In this course, the participants will discuss the four phases and elements of comprehensive emergency management. The participants will also be presented with one formula for success in emergency management. Finally, the participants will develop priorities and specific objectives concerning organizational and individual involvement for improving your community's capability to respond to a major emergency or disaster.

Prerequisites: None
Class Hours: 2
FM Credit: 2 Hours
EMS-I Credit: None

LEPC — Development of Direction and Control

In this course, the participants will cover the meaning of direction and control, explain its purpose and functions, and discuss the concept of overhead teams and their relationship to effective emergency field operations. The course will also relate policy to on-scene management and strategy.

Prerequisites: None
Class Hours: 2
FM Credit: None
EMS-I Credit: None

LEPC — Disaster Planning: Development of an Agency, Organization, Response Plan

In this course, the participants will develop a list of the common elements of an operational response plan for emergency and disaster incidents. They will also discuss the relevance, benefits, and steps in preparation of an agency operational response plan.

Prerequisites: None
Class Hours: 2
FM Credit: None
EMS-I Credit: None

LEPC Programs

LEPC — Emergency and Disaster Resources

In this course, the LEPC participants will be able to identify emergency management resources and to classify the various types available. The participants will also be able to identify the differences and similarities between routine resource management and emergency resource management.

Prerequisites: None
Class Hours: 2
FM Credit: None
EMS-I Credit: None

LEPC — First Notice, Situational Analysis, and Determining Urgency

This course will present a logical order of the factors used in determining the urgency of an incident situation. It will also identify how these factors help to determine the relative priority and level of response.

Prerequisites: None
Class Hours: 2
FM Credit: None
EMS-I Credit: None

LEPC — Legal Issues

This course will present the basic issues of liabilities in emergency response, along with the common causes of lawsuits brought against emergency responders.

Prerequisites: None
Class Hours: 2
FM Credit: None
EMS-I Credit: None

LEPC — Lessons Learned from the Disaster Research

This workshop is designed around case studies which will show some of the deficiencies or omissions that hampered good coordinated community emergency responses. The participants will relate these case studies to their own planning process. The overall goal of this workshop is to use disaster research to promote emergency planning.

Prerequisites: None
Class Hours: 2
FM Credit: None
EMS-I Credit: None

LEPC — On-Scene Management

In this course, the instructor will identify the key elements of on-scene direction and control in addition to describing the sequence of events that must occur on-scene for organization and efficient management to take place. The participants will be able to identify potential problem areas during on-scene operations.

Prerequisites: None
Class Hours: 2
FM Credit: None
EMS-I Credit: None

LEPC — OSHA's Final Rule

This course will outline OSHA's final rule and its effect on emergency responder training. It will also cover the implications of the "Standard of Care" and the expected benefits.

Prerequisites: None
Class Hours: 2
FM Credit: None
EMS-I Credit: None

LEPC Programs

LEPC — Philosophy and Concepts of Effective Emergency Operations

This class will define the most important terms used in emergency management. It also relates to the “Crucials” of emergency management essential to state-of-the-art programs. In addition, the instructor will discuss how emergency management has changed over the last decade and why a new approach is necessary.

Prerequisites: None
Class Hours: 2
FM Credit: None
EMS–I Credit: None

LEPC — Role of Emergency Operations Centers

This course will help LEPC participants identify and describe the primary functions of an Emergency Operations Center. In addition, the participants will discuss the advantages of a centralized operations center and have a better understanding of the differences between the incident site and the Emergency Operations Center.

Prerequisites: None
Class Hours: 2
FM Credit: None
EMS–I Credit: None

LEPC — The Incident Manager: Jobs and Responsibilities

This course will assist the LEPC participants in identifying common mistakes made by an incident commander, and to develop solutions to these common mistakes. The course will also present the key elements of managing an incident and a framework for situational leadership.

Prerequisites: None
Class Hours: 2
FM Credit: None
EMS–I Credit: None

LEPC — Table-Top Exercise

Local Emergency Planning Committees are required to run an exercise of their community's emergency response plan annually. "Peterboro" now provides a more realistic format in which to run this exercise. This 6' x 8' model city has more than forty buildings, a wide variety of vehicles, and the necessary support material to help simulate an emergency. Instructors act as facilitators to try and bring a real timeline into the exercise, as well as tasking the responders with "complications." The ultimate goal is to assist the LEPC in determining how well their plan really works. (Timeframe determined by complexity of the exercise and pre-planning needed.)

Prerequisites: None

Class Hours: Varies based on type of exercise

FM Credit: None

EMS-I Credit: None

Rescue Programs

Aircraft Rescue and Firefighting

This two-day course is offered to assist fire departments who respond to aircraft emergencies with standard structural and airport fire equipment.

Topics covered include: various types of incidents; crash without fire; crash with fire; types of aircraft from small private to commercial and military; exposure conditions at the crash site; effects by weather; access to the crash site; communications; personal protection; and support agencies.

Also covered: What to expect when the FAA and NTSB arrive on the scene.

Full protective clothing, including SCBA with one spare cylinder, is required on the second day of class.

Prerequisites: Applicants must be Certified Firefighter I or firefighters who have been members of a fire department on or before July 1, 1977. Proof must be submitted with application.

Class Hours: 16

FM Credit: None

EMS-I Credit: None

Basic Vehicle Rescue

This two-day course provides the essential knowledge and skills needed by rescue squad members.

The course focuses on methods of gaining access to the victim; disentanglement; packaging of the victim; and removal from the vehicle.

Students have an opportunity to use a variety of hand tools on wrecked automobiles. Class time will also be spent on other aspects of the rescue process, including control of hazards at the accident scene.

Full protective clothing (no SCBA) is required.

Prerequisites: None

Class Hours: 16

FM Credit: None

EMS-I Credit: None



Rescue Programs

Basic Water Safety

This one-day course is designed for firefighters and other public safety personnel who may be called to handle emergencies in or around water.

The morning session will include the following topics: water hazards; aquatic safety; types of water rescue operations; basic watercraft safety; hypothermia; rescue equipment; emergency response; and the operations of water rescue. The afternoon session includes: practical skills for rescue; self rescue; and allows participants to become familiar with his/her own personal limitations obtained through pool exercises.

Following successful completion of the practical skills and a written examination, participants will receive a Connecticut Fire Academy certificate of completion. Participants are required to bring swimming suits and towels. Participants are not required to be a swimmer to attend this course.

Prerequisites: None
Class Hours: 8
FM Credit: None
EMS-I Credit: 3 Hours

Cold Water Rescue

This two-day course is designed for firefighters who might be called to a water rescue incident involving cold or icy waters, as well as ice rescues.

Topics include: effects of hypothermia; rescue equipment; protective clothing; and rescue techniques.

Other items to be covered will include various tools and supplies.

Time will be spent doing simulated rescues on ice, as well as in the water.

Prerequisites: None
Class Hours: 16
FM Credit: None
EMS-I Credit: None

Rescue Programs

Confined Space Rescue

This two-day course will prepare the participants for confined space rescue situations which may include pits, wells, vats, mines and tanks. Topics will include: protection of personnel; command post operations; equipment used; atmospheric testing; and the psychoanalysis of the rescuer after the incident.

Full protective clothing, including SCBA with one spare cylinder, is required.

Prerequisites: Applicants must have completed Hazardous Materials First Responder Operational. Proof must be submitted with application.

Class Hours: 16

FM Credit: None

EMS-I Credit: None

Confined Space Rescue: Refresher

This one-day course is designed to maintain the rescuer's competency and to keep abreast of the hazards that the rescuer is faced with when entering a confined space atmosphere to initiate a rescue. The morning session will start in the classroom for an overview of the rescue and safety objectives and procedures of confined space rescue. The session will then move to the training grounds to take part in hands-on exercises for review of equipment and rigging. The afternoon session will be spent participating in hands-on scenarios that the rescuer is faced with when responding to a confined space rescue incident.

Prerequisites: Applicants must have completed the two-day Confined Space Rescue course or its equivalent. Proof must be submitted with application.

Class Hours: 8

FM Credit: None

EMS-I Credit: None

Rescue Programs

Hydraulic Rescue

This two-day course is offered to the experienced rescuer. It is intended to help the rescuer understand and operate the various hydraulic tools used in today's fire service.

Topics include: various tools and the facts about each; operations; problem solving; and field maintenance.

Safe operation procedures and practices will be emphasized.

Full protective clothing (no SCBA) is required.

Prerequisites: None
Class Hours: 16
FM Credit: None
EMS-I Credit: None

Pneumatic Rescue

This one-day course is designed to meet the needs of the many fire departments who have purchased low- and high-pressure air rescue bags.

Time will be spent on safety techniques, placement, forcing techniques and possible injury scenarios. Instructors for this course have been trained by Veters Air Rescue Systems in the use of air bags.

Full protective clothing (no SCBA) is required.

Prerequisites: None
Class Hours: 8
FM Credit: None
EMS-I Credit: None

Rescue Programs

Basic Rope Rescue

This two-day course is a basic overview of rope rescue equipment and techniques. Topics include: equipment and use; basic rigging; anchoring and anchoring systems; rappelling using the figure 8 plate; belay techniques; victim pick-offs; and safety. There will also be an overview of NFPA Standard 1983.

Students are required to bring their own helmet, gloves, and hard sole boots to this course.

Prerequisites: None
Class Hours: 16
FM Credit: None
EMS-I Credit: None

Advanced Rope Rescue

The goal of this three-day course is to teach the rescue technician advanced rope tactics including advanced anchoring systems; ascending techniques with mechanical ascenders and prusik loops; lowering systems and mechanical advantage vertical hauling systems, including the 2:1, 3:1, 1 or "Z" rig, and 4:1 systems. This rope course is the second of a series of courses designed to improve the firefighter's working knowledge of rope system management and techniques.

Students are required to bring their own helmet, gloves, and hard sole boots to this course.

Prerequisites: Applicants must have completed Basic Rope Rescue. Proof must be submitted with application.
Class Hours: 24
FM Credit: None
EMS-I Credit: None

Low Angle Evacuation

Is your department prepared and equipped to handle the most common type of rope rescue — the Slope Evacuation? Every city or town, whether large or small, has the potential for a vehicle to go off the road and down an embankment. This three-day course is designed to help first responders safely perform the evacuation.

Topics include: defining slope angles; pre-planning; scene assessment; advanced anchoring systems; stretcher rigging and packaging; medical considerations; advanced hauling and braking systems; and communications. The participants will perform actual scenarios which simulate a rescue from a car down a ravine.

Prerequisites: None
Class Hours: 24
FM Credit: None
EMS–I Credit: None

Trench Rescue

The response and operations at rescue incidents involving trench and excavation collapses require a very specialized level of training, a strong awareness of associated hazards, and the need for specific equipment to conduct rescue and recovery operations.

Topics include: pre-incident operations; assessment; hazard control; support operations; gaining access; providing emergency care; disentanglement; removal; transfer; and incident termination. Students will perform in actual rescue/recovery scenarios.

Full protective clothing (no SCBA) is required.

Prerequisites: None
Class Hours: 16
FM Credit: None
EMS–I Credit: None

Rescue Programs

Trench Rescue Awareness

The response and operations at rescue incidents involving trench and excavation collapse require a very specialized level of training, a strong awareness of associated hazards, and the need for specific equipment to conduct rescue and recovery operations.

Topics include: pre-incident operations; assessment; hazard control; support operations; gaining access; providing emergency care; disentanglement; removal; transfer; and incident termination.

This course has no practical skills component.

Prerequisites: None

Class Hours: 4

FM Credit: None

EMS-I Credit: None

Public Education Programs

Firehawk Companion Program

This basic two-day course will prepare anyone who works with children and families to identify and assess the needs of the juvenile firesetter. Participants will be challenged to develop their critical thinking and problem solving skills. Participation will focus on small group exercises including: role-playing; active listening; and interview techniques. The participants will learn skills for working collaboratively with community networks, including possible referral options.

Prerequisites: None
Class Hours: 16
FM Credit: 9 Hours
EMS-I Credit: None

Public Fire and Life Safety Educator I

This is an entry-level course that will prepare anyone who performs public education duties to present existing programs to all audiences. The course addresses fire prevention activities, the major causes of unintentional injury, characteristics of learning, evaluation of lesson plans, presentation methods, effective usage of audiovisual aids, successfully dealing with the media, and recordkeeping. This four-day course meets the requirements of NFPA 1035, “Professional Qualifications for Public Fire and Life Safety Educator I.”

Each student must have access to the reference manuals listed on page 84.

Prerequisites: None
Class Hours: 32
FM Credit: 24 Hours
EMS-I Credit: None

Public Education Programs

Public Information Officer

This one-day course is designed to instruct participants in the basic methods for establishing and maintaining a positive relationship with the news media. Fire department activities, including public fire education programs, man-made and natural disasters, and emergencies, make developing policies and training for dealing with the news media essential.

Discussion topics will cover: public disclosure laws; media relations; and news releases. Participants will learn the basics of preparing news releases, setting up press conferences, and the responsibilities of the Public Information Officer (PIO) at the scene of an emergency. Students will participate in mock briefings with reporters from various newspapers.

Prerequisites: None

Class Hours: 8

FM Credit: 6 Hours

EMS-I Credit: None

Kid's Fire Safety House

What is the Kid's Fire Safety House?

The Kid's Fire Safety House is a mobile educational trailer used by community educators to teach preschool to high school aged children. This educational tool allows children to practice escaping from a simulated house fire. The trailer uses electronically operated smoke detectors and a non-toxic smoke in a simulated bedroom to create a realistic environment where children can practice escaping from a house in the event of a fire.

Additional features of the trailer enable the educator to teach kitchen safety, home heating safety and reporting an emergency.

Who can reserve the Kid's Fire Safety House?

Community educators, including Fire & Life Safety Educators and others engaged in teaching fire or other life safety skills to the public. This includes fire and emergency medical services organizations and schools.

How can I reserve the Kid's Fire Safety House?

To reserve the Kid's Fire Safety House, a letter must be sent to:

Reservation Coordinator
Kid's Fire Safety House
Commission on Fire Prevention and Control
34 Perimeter Rd.
Windsor Locks, CT 06096-1069

Please include in your letter the date(s) requested, name of event (if applicable), name of organization making request, contact name and phone number, and whether day or night-time event (times needed). Your request will be confirmed by letter.

Reservations cannot be made over the phone.

Reserving the Kid's Fire Safety House well ahead of your event date(s) is advised since scheduling is done on a first-come, first-served basis. **A 30-day notice is required.**

Once the letter is received, the Reservations Coordinator will send a confirmation letter and an informational package to the requesting party. The informational package will include specific instructions on what needs to be done to prepare for the arrival of the Kid's Fire Safety House.

IFSTA Publications



**CONNECTICUT FIRE ACADEMY
IFSTA PUBLICATIONS
DISTRIBUTOR
for CONNECTICUT**



Connecticut Fire Academy is an International Fire Service Training Association/Fire Protection Publications Distributor.

The Commission on Fire Prevention and Control is pleased to announce that the Connecticut Fire Academy has been designated the authorized IFSTA/Fire Protection Publications distributor for the State of Connecticut. The Academy will offer IFSTA's complete line of publications and related training materials. If you are interested in purchasing manuals, please contact the Academy at (860) 627-6363, Extension 244. By purchasing materials through the Academy, you help to support fire service training in Connecticut. Please indicate when placing your order if you wish to have your order shipped to you, or if you wish to pick up your order at the Academy. As with all other workbook orders, you may pay by Check, Credit Card (Visa or Master Card) or by submitting a Purchase Order Number (PO #) with your order. The Academy looks forward to serving you.



Connecticut Fire Academy Bookstore

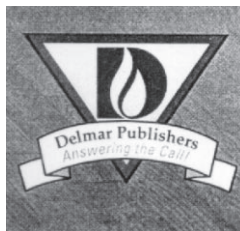
34 Perimeter Rd.

Windsor Locks, CT 06096-1069

Phone at **860-627-6363 ext. 244**

In-State Toll Free **1-877-528-3473**

Email at **cfa.bookstore@po.state.ct.us**



We now offer PennWell, Delmar, and Davis publications

Certification Examination Components

National Professional Qualifications Standards



The following is a description of the structure and components of the Certification Examinations. The NFPA Standard and the edition to which the examination is written is noted below the certification level. The State of Connecticut Commission on Fire Prevention and Control is pleased to offer Fire Service Certification to the members of Connecticut's fire service. Certification is an excellent means by which an individual may measure his/her knowledge, skills, and abilities against a national standard and that of their peers. As indicated below, there are currently 12 levels of certification offered consisting of written and/or practical skills examination components as well as live fire suppression verification for the levels of Firefighter I and Firefighter II. The Commission has adopted the most current edition of the applicable Professional Qualifications Standards of the National Fire Protection Association as the Standards for Certification. A 13th level of certification, that of Airport Firefighter, is currently under development. The level of Fire Inspector I is offered through the Office of the State Fire Marshal. Additional Information for that level may be obtained by calling the Office of the State Fire Marshal at 860-685-8330.

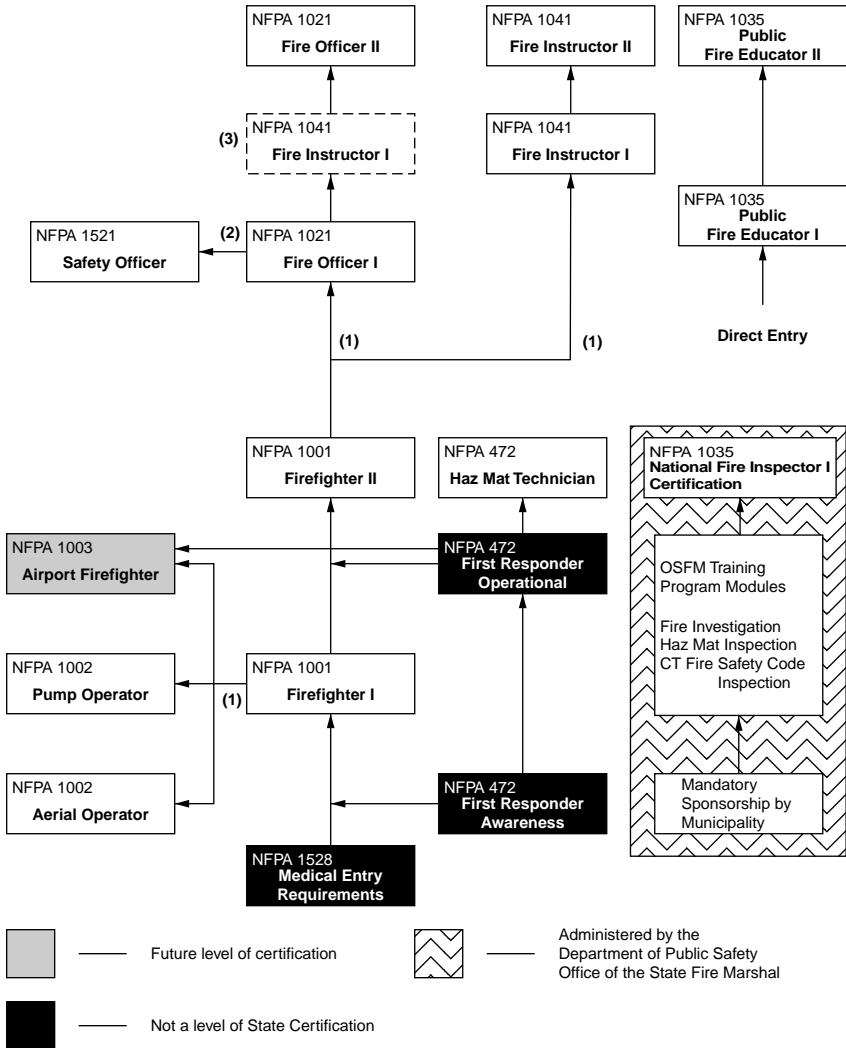
FIREFIGHTER I/II NFPA 1001 - 1997	<ul style="list-style-type: none">• Written Exam• Practical Skills Exam• Live Fire Suppression Verification
FIRE OFFICER I/II NFPA 1021 - 1997	<ul style="list-style-type: none">• Written Exam• Practical Skills Exam
FIRE INSTRUCTOR I/II NFPA 1041 - 1996	<ul style="list-style-type: none">• Written Exam• Practical Skills Exam
PUMP OPERATOR NFPA 1002 - 1998	<ul style="list-style-type: none">• Written Exam• Practical Skills Exam
AERIAL OPERATOR NFPA 1002 - 1998	<ul style="list-style-type: none">• Written Exam• Practical Skills Exam
PUBLIC FIRE EDUCATOR I/II NFPA 1035 - 2000	<ul style="list-style-type: none">• Written Exam• Practical Skills Exam
SAFETY OFFICER NFPA 1521 - 1997	<ul style="list-style-type: none">• Written Exam• Practical Skills Exam
HAZARDOUS MATERIALS TECHNICIAN NFPA 472 - 1997	<ul style="list-style-type: none">• Written Exam• Practical Skills Exam

The above listing illustrates the components and requirements of examinations only. Examinations which are administered to these and other levels which are based upon the previous editions of the Standards will be conducted in accordance with existing procedures and will consist of written examinations only. For more information, please contact the Certification Division.

Certification Examination Components

Certification Flow Chart

State of Connecticut Commission on Fire Prevention and Control Connecticut Fire Academy



- (1) Prerequisite or member of Fire Service prior to July 1, 1977
- (2) Prerequisite or Fire Officer prior to July 1, 1986
- (3) Required prerequisite for training or certification to the Fire Officer II level

August 31, 1999

Certification Examination Components

Examination Reference Materials

LEVEL	STANDARD	REFERENCE(S)
FIREFIGHTER I	1001 1997 ed.	<i>IFSTA: Essentials of Fire Fighting</i> , 4th Ed.; <i>Hazardous Materials for the First Responder</i> , 2nd Ed.; <i>DOT North American Emergency Response Guidebook</i> , 1996 Ed.
FIREFIGHTER II	1001 1997 ed.	<i>IFSTA: Essentials of Fire Fighting</i> , 4th Ed.; <i>Hazardous Materials for the First Responder</i> , 2nd Ed.; <i>Hazardous Materials: Managing the Incident</i> , 2nd Ed.; <i>DOT North American Emergency Response Guidebook</i> , 1996 Ed.
FIRE SERVICE INSTRUCTOR I & II	1041 1996 ed.	<i>IFSTA: Fire Service Instructor</i> , 5th Ed. —OR— <i>IFSTA: Fire Service Instructor</i> , 6th Ed.
PUMP OPERATOR	1002 1998 ed.	<i>NFPA 1500</i> (1997 ED.): <i>IFSTA: Fire Stream Practices</i> , 7th Ed.; <i>Fire Department Pumping Apparatus</i> , 7th Ed.; <i>Water Supplies for Fire Protection</i> , 4th Ed.
AERIAL OPERATOR	1002 1998 ed.	<i>NFPA 1500</i> (1997 ED.): <i>IFSTA: Fire Stream Practices</i> , 7th Ed.; <i>Fire Department Pumping Apparatus</i> , 7th Ed.; <i>Water Supplies for Fire Protection</i> , 4th Ed.; <i>IFSTA: Aerial Operator</i> , 1st Ed.
FIRE OFFICER I	1021 1997 ed.	<i>IFSTA: Fire Department Company Officer</i> , 2nd Ed.; <i>Fire Inspection & Code Enforcement</i> , 5th Ed., Glossary, Chapter 2, Appendix C; <i>Essentials of Fire Fighting</i> , 4th Ed., Chapters 1, 2, 3, 10, 13, 14, 15, 16, 17 & 18; <i>Fire Department Occupational Safety</i> , 2nd Ed., Chapters 1, 2, 3 & 9; <i>IFSTA: Introduction to Fire Cause and Origin</i> , 2nd Ed.; <i>OSHA: Occupational Exposure to Blood Borne Pathogens: Precautions for Emergency Responders</i> , 1993 Ed.
FIRE OFFICER II	1021 1997 ed.	<i>IFSTA: Fire Department Company Officer</i> , 2nd Ed.; <i>Fire Inspection and Code Enforcement</i> , 5th Ed.; <i>Fire Department Occupational Safety</i> , 2nd Ed.; <i>Private Fire Protection and Detection</i> , 2nd Ed., Chapters 2, 3, 5 & 6; <i>Noll, Hildebrand & Yvorra: Hazardous Materials: Managing the Incident</i> , 2nd Ed.

Certification Examination Components

Examination Reference Materials, *Continued*

LEVEL	STANDARD	REFERENCE(S)
PUBLIC FIRE EDUCATOR I & II	1035 2000 ed.	<i>IFSTA: Fire & Life Safety Educator</i> , 2nd Ed.; <i>Essentials of Fire Fighting</i> , 3rd Ed.; Chapters 1, 2, 3, 13, 17, 18; <i>Fire Service Instructor</i> , 5th Ed., Chapters 1, 3, 4, 5, 6, 7, 8; <i>Fire Department Company Officer</i> , 2nd Ed., Chapters 1, 2, 3, 6
SAFETY OFFICER	1521 1997 ed.	<i>IFSTA: Fire Department Occupational Safety</i> , 2nd Ed., <i>NFPA Standard 1500</i> ; <i>National Fire Academy Student Manuals</i> ; <i>Incident Safety Officer</i> ; <i>Health and Safety Officer</i> ; <i>OSHA: 3130</i> , 1993 (Revised).
HAZARDOUS MATERIALS TECHNICIAN	472 1997 ed.	<i>Noll, Hildebrand & Yvorra: Hazardous Materials: Managing the Incident</i> , 2nd Ed.; <i>DOT North American Emergency Response Guidebook</i> , 1996 Ed.; <i>IFSTA: Hazardous Materials for First Responders</i> , 2nd Ed.

The above listed information is current as of January 1, 2000. Due to the ever-changing nature of the Professional Qualifications Standards of the National Fire Protection Association and associated examination reference materials, these may be revised from time to time.

Every effort will be made to inform the fire service of these changes well in advance of any examination that will be affected by the changes.

MANUALS ARE AVAILABLE FROM:

NFPA Standards
National Fire
Protection Association
Batterymarch Park
Quincy, MA 02169
1-800-344-3555

IFSTA Manuals
Noll's Haz-Mat Materials
Pennwell Publications
Connecticut Fire Academy
34 Perimeter Rd.
Windsor Locks, CT 06096
1-860-627-6363 Ext. 244
1-877-528-3473 Ext. 244
or
1-877-5-CTFIRE

National Fire Academy
Student Manuals
Connecticut Fire Academy
34 Perimeter Rd.
Windsor Locks, CT 06096
1-860-627-6363 Ext. 244
1-877-528-3473 Ext. 244
or
1-877-5-CTFIRE

Certification Examination Components

Certification Examination Requirements

Individuals **MUST** meet examination prerequisites to be eligible for testing. Please check individual program descriptions for certification prerequisite information.

Candidates applying for certification **MUST** be at least 18 years of age.

Examination application forms **MUST** be received a minimum of ten (10) days prior to a scheduled examination. Examination applications that do not meet these requirements **WILL NOT** be processed and will be returned.

Students participating in any certification activity **MUST** carry a form of personal identification. Examination results are **NOT** available by telephone.

The fee structure for certification examinations is \$7.50 per written examination and \$5.00 per practical examination with one free re-examination, if necessary. Individuals participating in training programs listed within this calendar are not required to pay a fee for testing. The fee is included in the program tuition.

Written Certification Examinations are held at the Connecticut Fire Academy, 34 Perimeter Road, Windsor Locks, the third Friday of every month at 9:30 a.m., and throughout the state weekly.

Please call our **INFO LINE** for a complete listing of scheduled examinations and locations at: (860) 627-6363; press 2 for Certification, then press 1 for a list of testing locations.

Fire Departments or organizations desiring to host practical skills testing must do so by submitting an Examination Application. Written examinations must be scheduled a **MINIMUM** of five business days after the practical skills testing. Please contact the Certification Division at (860) 627-6363, ext. 229 for additional information.

The Certification Division complies with the Americans with Disabilities Act of 1990 by providing accommodations for those with documented special needs. Please contact the Director of Certification at (860) 627-6363, ext. 225 for additional information.

Certification Examination Unexcused Absence Procedure

Effective July 1, 1998, any individual who incurs an unexcused absence from a previously scheduled certification examination shall forfeit any and all examination fees that had been previously credited for the examination. The individual's certification record shall be annotated "No Show - Forfeit" and said individual shall be required to submit a reexamination application, with the required fee, to take the previously scheduled examination at a subsequent date and location.

Certification Examination Components

Certification Exam Checklist

The following checklist is provided to detail the procedures and timelines necessary to apply for and conduct certification examinations.

Task	Must Be Received
<input type="checkbox"/> Application to Reserve Practical Test Date	4-6 weeks prior to date you are requesting. You will then get a letter from the Director of Certification listing equipment needed and roster sheet of your Evaluators.
<input type="checkbox"/> Roster Sheet of Station Evaluators	10 days before Practical.
<input type="checkbox"/> Application to Reserve Written Test Date	4-6 weeks prior to date you are requesting.
<input type="checkbox"/> Completed Student Applications	10 days prior to Practical or Written Exam if no Practical.
<input type="checkbox"/> Practical Skills Summary Sheets	7 days before Written Exam.
<input type="checkbox"/> Fire Suppression Forms	Turn in with Student Apps. If not turned in before Written Exam, students will not be certified until form is turned in.
<input type="checkbox"/> Re-Examination Applications	10 days before Written Exam.
<input type="checkbox"/> Release of Scores Form	Any time before Written Exam. No scores will be released if this form is not submitted. No exceptions will be made.
<input type="checkbox"/> Copies of Student Licenses	Submitted with Pump and Aerial Operator applications. 10 days before Written.
<input type="checkbox"/> Hazmat Operational Certificates	Copy of Operational Cert. must be submitted with student application for Hazmat Technician.

Certification Examination Components

Indemnification of Instructors

An added benefit to Certification for Fire Service Instructors may be found in Section 7-323q of the General Statutes of Connecticut which states: “The state shall save harmless and indemnify any person certified as a fire service instructor by the Commission on Fire Prevention and Control under section 7-3231 from financial loss and expense, including legal fees and costs, if any, arising out of any claim, demand, suit or judgment by reason of alleged negligence or other act resulting in personal injury or property damage, which acts are not wanton, reckless or malicious, providing such person at the time of the acts resulting in such injury or damage was acting in the discharge of his duties in providing fire service training and instruction.”

CT Certification on the Web

Please refer to the Certification Division Page of the Connecticut Fire Net at <http://www.state.ct.us/cfpc/cert.html> for up-to-date certification examination information, certification rules and regulations, examination schedules, and downloadable examination applications for all currently offered examinations.

National Fire Service Certification



The Commission is proud to offer National Fire Service Certification as an accredited agency under the National Board on Fire Service Professional Qualifications and the International Fire Service Accreditation Congress.



Current levels of state certification available for national certification from one or both of these entities include:

Firefighter I	Pump Operator
Firefighter II	Aerial Operator
Fire Officer I	Hazardous Materials Technician
Fire Officer II	Public Fire and Life Safety Educator I
Fire Service Instructor I	Public Fire and Life Safety Educator II
Fire Service Instructor II	Fire Inspector I

All individuals who successfully attain state certification for the above levels are provided with an application for national certification to those levels.

For more information: contact the Director of Certification at (860) 627-6363, extension 225.

Certification Examination Components

The following are questions and answers relating to National Certification. At press time, only information regarding the National Board on Fire Service Professional Qualifications was available. Please contact the Certification Division for similar information regarding the International Fire Service Accreditation Congress.

National Board on Fire Service Professional Qualifications Information

How can I encourage my training agency to become accredited?

In the last 20 years a system has evolved to produce professional fire service qualifications standards that your agency can use to establish performance measures for your training programs and for the individuals they train.

As in any training activity, an independent set of criteria reviewed by outside experts is the best way to assure trainees and governance bodies that a program meets the professional standards. NBFSPQ will work closely with your agency to help it establish the criteria and procedures necessary to meet the rigorous requirements for accreditation. First and foremost, the agency must be using recognized professional qualifications consensus standards such as the NFPA “Pro Qual” Standards.

Simply stated, the NBFSPQ system provides for recognition, professionalism, and credibility to your agency’s training programs. It is a “value added” element to a training program that will help justify its budget and may be helpful in litigation or when the program is being challenged for whatever reason. Have your training agency contact us for a complete accreditation application package.

Will other agencies recognize my qualifications?

It is the goal of the NBFSPQ to provide a process and encourage other agencies, for example fire departments and national, state and local governments, to arrange for reciprocity and recognize your professional qualifications. This can afford you with the mobility to qualify for a career or volunteer position in another jurisdiction without having to complete training and testing all over again.

Certification Examination Components

National Board on Fire Service Professional Qualifications Information, *Continued*



How can I obtain a Pro-Board certificate?

Any person who has been awarded certification by an agency accredited under the authority of the National Board on Fire Service Professional Qualifications (NBFSPQ) is eligible for registration and certification by the NBFSPQ.

The mission of the NBFSPQ is to establish an internationally recognized means of acknowledging professional achievement in the fire service and its related fields. Accreditation is only given to organizations that meet and maintain specific criteria intended to ensure high quality and uniform standards in the certificate process.

Because of the accreditation of your training agency, you are entitled to be registered as a fire service professional and to obtain an NBFSPQ Certificate recognizing your accomplishment.

Simply obtain from your training agency an NBFSPQ Application for National Registration/Certification and mail with the appropriate fee to the NBFSPQ office shown on this page.

Established in 1972, the National Professional Qualifications System (NPQS) provides a national and international level of recognition for individuals who have demonstrated proficiency in meeting the skills and knowledge for fire service professional qualifications.

If you already have an agency certification, convert it now to national and international NPQS certification...

National Board on
Fire Service Professional Qualifications
P.O. Box 690632
Quincy, MA 02269
USA
Phone: 617-984-7474
E-mail: nbfspq@nfpq.org

Special Programs



Connecticut Fire Officer Weekend

Each year the Connecticut Fire Academy sponsors a trip to the National Fire Academy. This program allows Connecticut Fire Officers to attend the National Fire Academy.

Chemical Emergency and Community Response Conference

This annual conference focuses on hazardous materials, terrorist and other emergencies that require community consideration. Specific classes are offered for the first responder as well as the incident manager and community coordinators.

Introduction to the Fire Service

This five-day program will focus on introducing youths ages 14-17 to the Fire Service. The program will be held in a “camp” type atmosphere. Each student will reside at the Connecticut Fire Academy for the duration of the program.



Regional Deliveries

National Fire Academy classes will be delivered throughout the state six times per year.

Public Fire and Life Safety Education Conference

This annual conference highlights the latest public fire safety education programs and techniques. The conference offers a full day of topics relevant to fire and life safety educators.

Juvenile Firesetting Conference

The conference focuses on improving the skills of those who work with juveniles interested in fireplay or firesetting. Specialists in juvenile firesetting will speak on topics relevant to professionals concerned with reducing child set fires.

New England Training Weekend

These programs, at the University of Massachusetts in Amherst, MA focus on National Fire Academy classes. They are sponsored by Trade Region I.

Watch for individual flyers on the above programs.

CT Agencies/Organizations/Fire Schools

Connecticut Fire Service Agencies/Organizations

- Office of State Fire Marshal
 - CT LEPC SARA Title III
 - CT Canine Search and Rescue
 - CT Career Fire Chiefs Association, CCFCA
 - CT Fire Chiefs Association, CFCA
 - CT Fire Departments Instructors Association, CFDIA
 - CT Fire Marshals Association, CFMA
 - CT Fire Photographer's Association, CFPA
 - CT Firemen's Historical Society
 - CT Society of EMS Instructors, Inc.
 - CT State Firefighter's Association, CSFA
 - Uniformed Professional Firefighters Association of CT, UPFFA
-

Connecticut Regional Fire Training Schools

- Burrville Regional Fire School • Richard Winn, Director • (860) 738-1254
- Eastern CT Firemen's Training School • Jim Wind, Director • (860) 443-8182
- Fairfield Regional Fire School • William Kessler, Director • (203) 254-4719
- Hartford County Fire School • Chester Haber, Director • (860) 828-3242
- New Haven Regional Fire Academy • William Seward III, Director • (203) 946-6210
- Valley Fire Chief's Training School • Peter Wols, Director • (203) 736-6222
- Wolcott State Fire School • Robert Massicotte, Director • (203) 879-1559
- Middlesex County Fire School • Clarence Philmore, Director

CFP&C, CFA Staff Contact Information

Office Hours are M–F 8:30–4:30

Main Phone Number (860) 627-6363 • In-State Toll Free 1-877-528-3473

Name	Title	Ext.	Email
Jeff Morrisette	State Fire Administrator	230	jeff.morrisette@po.state.ct.us
Alberta Ouellette	Executive Secretary	231	alberta.ouellette@po.state.ct.us
Adam D. Piskura	Director of Training	272	adam.piskura@po.state.ct.us
Elaine Mancino	Secretary	226	elaine.mancino@po.state.ct.us
Mark Lewandowski	Deputy Director of Training	240	mark.lewandowski@po.state.ct.us
Ron Keane	Program Manager	237	ron.keane@po.state.ct.us
Ed O'Hurley	Program Manager	242	ed.ohurley@po.state.ct.us
Paul Nyerick	Program Manager	243	paul.nyerick@po.state.ct.us
John Gamble	Program Manager	241	john.gamble@po.state.ct.us
John Tsokalas	Publications Coordinator	244	john.tsokalas@po.state.ct.us
Kim Taylor	Training Registrar	238	kim.taylor@po.state.ct.us
Debbie Richardson	Office Assistant	239	debbie.richardson@po.state.ct.us
Kelli Stewart	Office Assistant	221	kelly.stewart@po.state.ct.us
Jim Carroll	Duty Officer	268	jim.carroll@po.state.ct.us
Fred Piechota	Director of Certification	225	fred.piechota@po.state.ct.us
Jim Birmingham	Practical Skills Coordinator	227	james.birmingham@po.state.ct.us
Denice Fortin	Certification Registrar	229	denice.fortin@po.state.ct.us
Peter O'Neil	Director of Fiscal Services	234	peter.oneil@po.state.ct.us
Ron Vietts	Fiscal Administrative Officer	233	ron.vietts@po.state.ct.us
Ed Bycenski	Fiscal Administrative Assistant	257	ed.bycenski@po.state.ct.us
Chris Johnston	Plant Facilities Engineer	232	chris.johnston@po.state.ct.us
Jim Scavetta	Qualified Craftworker	269	jim.scavetta@po.state.ct.us

Connecticut Fire Academy Acceptance Notices and Refund/Cancellation Policy

Acceptance notices with directions will be mailed as soon as programs are filled or approximately two weeks in advance of all programs. Applicants not accepted in a program will generally be notified within a week of our receipt of their application.

Seating is limited for many Connecticut Fire Academy programs. Please notify the Training Registrar promptly in the event of a need to cancel your registration. Not only will your refund be processed in a timely manner, but your seat can be offered to someone on the waiting list. Students canceling at least seven days in advance of a program will receive a full refund. Please note that refunds are processed by the state comptroller's office and may take up to one month.

Program Hours:

Day programs are from **8:30 A.M. – 4:30 P.M.**

Evening programs are from **6:30 P.M. – 10:00 P.M.**

Please refer to your confirmation for specific times.



CT Fire Dept. Instructors Association

CONNECTICUT FIRE DEPARTMENT INSTRUCTORS ASSOCIATION, INC.

CLASSIFICATIONS OF MEMBERSHIP

ACTIVE MEMBERSHIP:

Membership is open to all personnel of a Federal, State, Municipal, or Industrial Fire Department, Volunteer or Career, and members of Organizations that promote Firefighter Education in the State of Connecticut who meets qualifications for Active Membership and are approved by a majority vote of the Active members present and voting.

Qualifications needed for Active Membership:

- A minimum of three years experience as a member of an organized fire department and/or fire service affiliated organization.
- Assignment as an Instructor in a fire service related field.
- Completion of three courses related to Firefighting.
- Completion of an Instructor Methods Course of at least 48 hours in length.
- Be recommended by the Chief of Department or Supervisor.

ASSOCIATE MEMBERSHIP:

Membership in this class is open to all persons who do not meet all of the qualifications for Active Membership, but who contribute their time and effort to the teaching or advancement of firefighting methods and skills. An Associate Member shall be eligible to participate in all meetings but shall have no right to vote. An Associate Member may request transfer to Active Membership upon meeting the qualifications of an Active Member.

An Associate Member must meet any two of the qualifications for Active membership and may transfer to Active Membership once all qualifications have been met.

LIFETIME MEMBERSHIP:

Lifetime Membership is open to any Active Member with a minimum of five years service in the association, who, by reason of his or her promotion to a higher rank of office, or because of retirement, is no longer able to devote their time to the active training of firefighters, or attend regular monthly meetings.

Lifetime Membership may be requested by submitting a letter to the secretary who will in turn read such letter to the membership at the first possible monthly meeting. A majority vote of the active members present will accept Lifetime Members. A Lifetime Member may continue to participate in monthly meetings.

DUES SCHEDULE: ACTIVE MEMBER - \$25.00 YEARLY
ASSOCIATE MEMBER - \$25.00 YEARLY
LIFETIME MEMBER - \$10.00 YEARLY

Send all correspondence to:

MATT NELSON, Secretary
Connecticut Fire Department Instructors Association, Inc.
1 Fischer Road
Hartford, CT 06120

CT Fire Dept. Instructors Association

CONNECTICUT FIRE DEPARTMENT INSTRUCTORS ASSOCIATION, INC.

MEMBERSHIP APPLICATION

Name (please print) Rank, Title, Position

Home Address City, State, & Zip Code

Name of Department or Organization

Address of Department or Organization City, State, & Zip Code

Home Telephone Work Telephone Organization Telephone

Type of membership you are applying for? (See reverse side for membership types and prerequisites) ACTIVE _____ ASSOCIATE _____

Years of experience as a member of an organized Fire Department and/or fire service affiliate? _____

I have successfully completed the following Instructor Methods course(s):

Course Title	Location	Total Hours	Date
--------------	----------	-------------	------

_____	_____	_____	_____
_____	_____	_____	_____

List or explain your experiences which qualify you as an Active Instructor: (examples, Dept. Training Officer, State Instructor, Certified Instructor, other)

List three (3) Fire Training Courses you have taken and completed:

Course Title	Location	Date
--------------	----------	------

_____	_____	_____
_____	_____	_____
_____	_____	_____

I agree to take part in the work and activities of this association and all I can for the advancement of Firefighting Safety in Connecticut through greater education.

Applicant's Signature _____ Date _____

I Recommend the above applicant to be a member of CFDIA, Inc.

Chief's Signature _____ Date _____

A Check, or Purchase Order # _____ must accompany this Application.

Signatures of Executive Committee

Secretary

Date



Scholarship Programs

The Flanagan Scholarship Program for Active Firefighters

This scholarship program was established in 1974 by the Connecticut State Firemen's Association, the Connecticut Fire Chiefs' Association, the Connecticut Fire Marshals' Association, and the Connecticut Fire Department Instructors' Association to honor the memory of Andrew J. Flanagan.

Andy Flanagan was for many years the training officer of the New Haven Fire Department, as well as Treasurer of the Connecticut State Firemen's Association. Following his retirement from the fire department as a Battalion Chief, he was selected as the first full-time Director of Fire Training for the State of Connecticut, a position he held until his untimely death in 1972.

Well respected throughout the fire service, Andy was a strong proponent of continuing education for firefighters and was instrumental in establishing the Connecticut Community/Technical College Fire Administration Associate Degree Program. These scholarship awards are made in furtherance of his goals.

Requirements for Flanagan Fund Awards

1. Grants are made for participation in college level courses.
2. Applicants must be residents of Connecticut.
3. Applicants must be active members of fire departments within Connecticut.
4. Applicants must have been active members of fire departments for the 24 months preceding the closing date for receipt of applications.
5. Applicants should submit a list of any college level courses which they may have taken, the name of the college attended, and the grades received. (Preference in making awards may be given to firefighters who have previously demonstrated their ability to perform college level work.)
6. Applicants for grants for the academic year must be submitted by January 31, after the end of the first semester.

Scholarship Programs

Connecticut Fire Department Instructors' Association Award

The Connecticut Fire Department Instructors' Association makes a similar award to the Flanagan Fund awards, using the same application process as described on the previous page. To be eligible for the CFDIA award the applicant must be:

- A. A child of a deceased firefighter, with preference being given to a child of a firefighter killed in line of duty, and meeting the requirements of 1, 2, 5, and 6 on page 97 *or*
- B. A firefighter meeting the requirements of 1 through 6 on page 97, with preference being given to applicants who have an interest in instructing firefighters.

Initial grants will be made after the end of the first semester. They may vary in amount each year, but have been \$300 a semester in recent years.

Having successfully completed at least one course in the first half of the academic year, a grant recipient may be awarded a second grant upon successful completion of an additional course in the second half of the academic year. In order to receive the second grant the student must furnish the committee with appropriate documentation, such as a current transcript or grade report, at the end of the second semester. The report should be sent to the Secretary by the end of June of the academic year.

Application forms may be obtained from the Fire Department Instructors, the Fire Chiefs, the Fire Marshals, or the State Firefighters Association after October of each year.

Please check all applicable items below:

I am a:

child of a deceased firefighter

child of a firefighter killed in the line of duty

Certified State Instructor

Member of the CFDIA

Scholarship Committee Evaluation: Recommend _____ Deny _____

Scholarship Programs

Application

ANDREW J. FLANAGAN MEMORIAL FUND ASSOCIATION SCHOLARSHIP APPLICATION

Name _____ Date _____ Home Phone _____

Home Address _____ Fire Dept. _____

Years in Fire Service: Career _____ Volunteer _____ Total _____

List your educational background, beginning with high school, including any resident National Fire Academy courses or other specialty programs:

School or College	Location	Dates Attended	Course of Study	Cartificate/ Degree/Diploma
----------------------	----------	-------------------	--------------------	--------------------------------

_____	_____	_____	_____	_____
_____	_____	_____	_____	_____
_____	_____	_____	_____	_____

Please attach a transcript or list of any college level courses which you may have already taken, the institution attended, and the grades received.

Please indicate the college program or courses in which you plan to enroll:

Attach a statement of approximately one page in length indicating your educational goals, why you believe this educational program will be useful to you, and why you are applying for financial aid.

Are you eligible for or receiving educational funding from another source? Yes ___ No ___ If you answered "yes," please explain:

If awarded a grant, I agree to submit necessary documentation of expenses and a report on my studies, including grades, to the Scholarship Committee.

Signature: _____

Please submit your application and supporting documentation by January 31 to:
Laurence M. Ford, Secretary
Andrew J. Flanagan Memorial Fund
P.O. Box 1004
Redding, CT 06875-1004

Fire Museum

**The Fire Museum of the
Connecticut Firemen's Historical Society**
230 Pine Street • Manchester, CT 06040
Telephone: (860) 649-9436

Americans can take great pride in their tradition of firefighting. More than a hundred years before Ben Franklin organized the first fire company in Philadelphia, the early settlers of Plymouth, New York, and Jamestown had suffered devastating fires and started a variety of fire protection practices. Residents were required to have fire buckets filled with water; chimneys were inspected by fire wardens; watchmen patrolled the streets and night looking for fires; and Peter Stuyvesant organized the first volunteer firemen in America in 1648.

The history of the fire service in Connecticut has been long, illustrious, and exciting. To help preserve this heritage, the Connecticut Firemen's Historical Society established its museum in a 1901 fire house located in the Cheney Mills National Historic District in Manchester.

On display is a wide variety of firefighting equipment, ranging from leather fire buckets used in Colonial times through early motorized fire apparatus. Included are hose reels and ladder trucks once pulled by willing volunteers, wooden water mains, a horse drawn hose wagon, hand-pulled engines that required as many as forty men to pump water on a fire and another that is steam operated, leather fire hose, a rare 18th century fire warden's staff, colorful displays of prints, tools, lanterns and badges, and much more.

A wonderful and unique experience for adults and children, the Fire Museum will bring the history and excitement of firefighting in days gone by colorfully alive. Why not plan a visit, soon?

The Fire Museum is open from 10:00 AM to 5:00 PM., Fridays and Saturdays; and from noon until 5:00 PM. on Sundays, mid-April through mid-November. Other times may be arranged by appointment.

Located centrally in Connecticut, the museum is at 230 Pine St., Manchester, and is easily reached by driving east on I-384 from its intersection with I-84 near the East Hartford-Manchester town line. Get off at Exit 2, turn left at the end of the ramp, left again at the traffic light, go over the bridge and immediately right at the traffic light. Follow Hartford Road one-third mile to Pine St. The museum is on the left, with ample free parking across the street.

Notes

