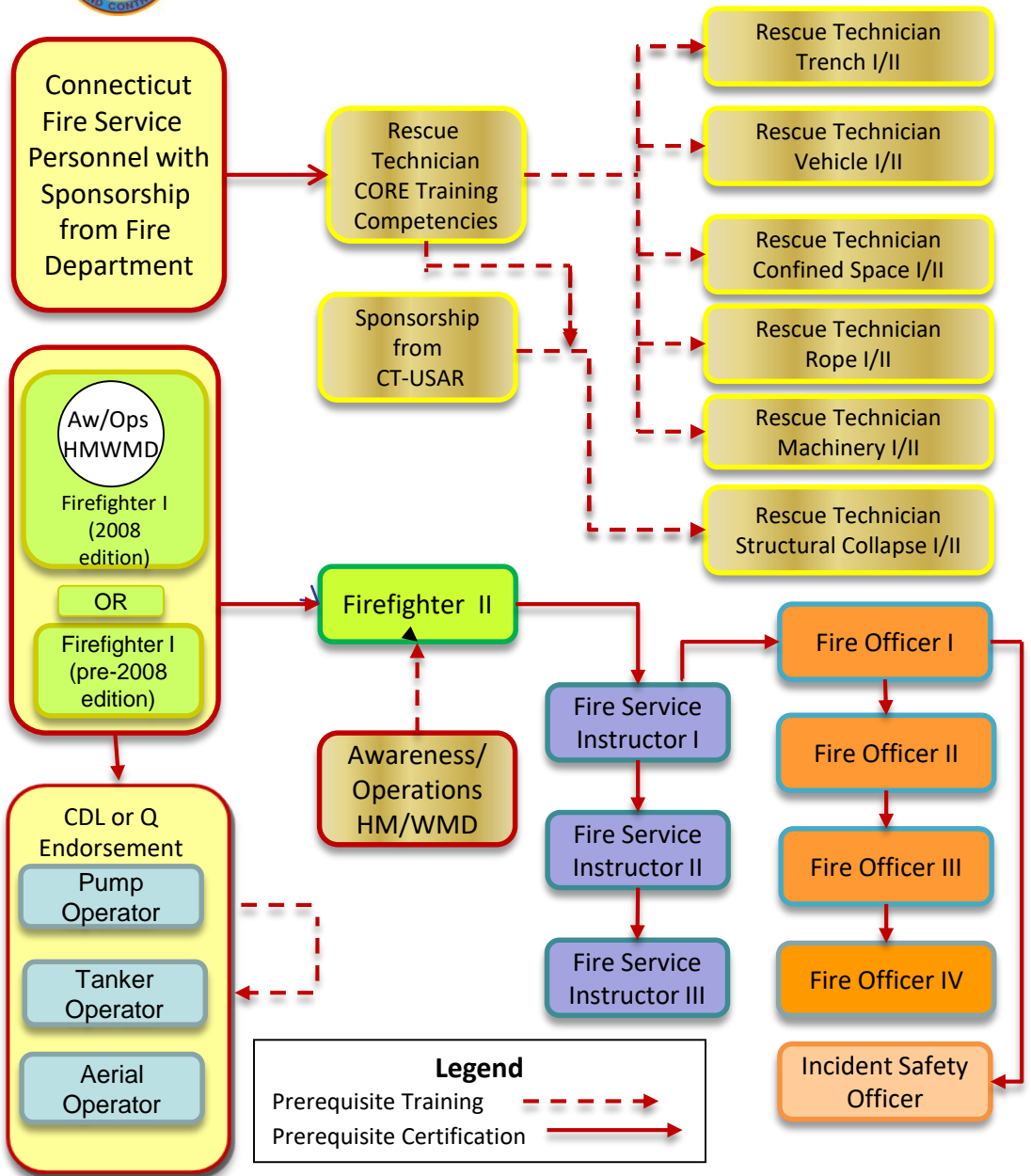




Connecticut Commission on Fire Prevention and Control Certification Flow Chart



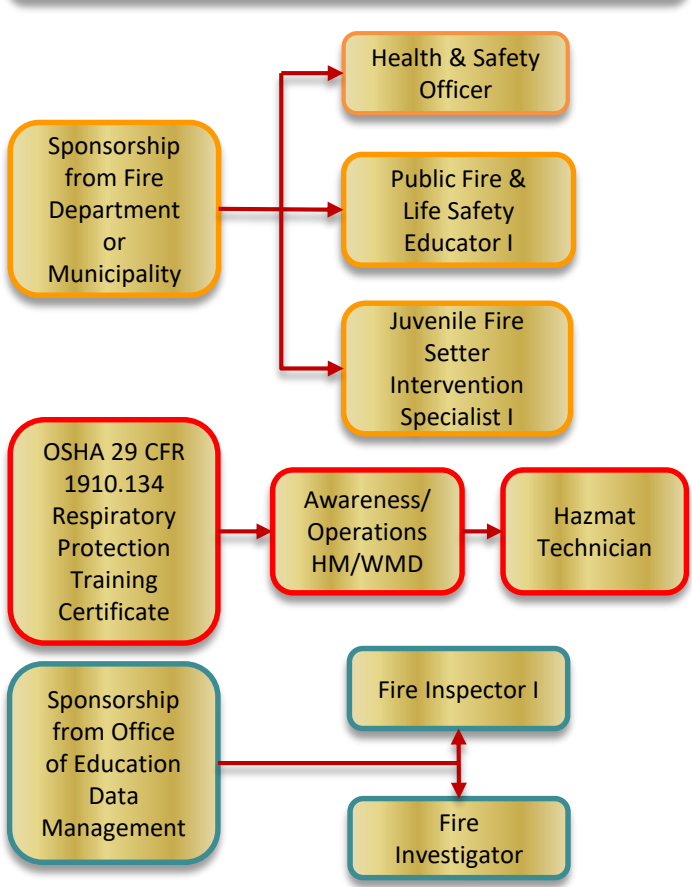
Legend

Prerequisite Training - - - - ->

Prerequisite Certification —————>

April 2022

Non-Fire Service and Fire Service Personnel Direct Entry Certification



EXCEPTIONS

- Active fire department member pre-7/1/78 FFI waived for FF II, AO, PO, TO. FFI and FFII waived for Fire Service Instructor I.
- Continuous service as Fire Officer pre-7/1/87-FO I waived for FO II and ISO.
- Personnel trained pre-1/1/10 to the Haz-Mat Awareness and Operations Level are not required to be certified to HMWMD