

EdSight Public Portal Update

[Overview](#) [Students](#) [Educators](#) [Instruction](#) [Performance](#)



EdSight

Connecticut's official source for education data

A Sneak Peek!



CONNECTICUT STATE DEPARTMENT OF EDUCATION

First, what will stay the same?

- Several familiar reports
- Ability to export data
- Robust documentation



Connecticut Report Cards



Select a District: Select a School or Leave Blank for District/State Report Card:

How to use the report card: Click the headings below (Students, Educators, Instruction/Resources, Performance) to expand(+) and collapse(-) a section and view associated charts. Click on a chart or chart title to disaggregate data by student group (e.g., race/ethnicity, gender, free/reduced-price meal eligibility, English learner, or disability status.)

List of Schools Identified for State Support and Recognition (.xlsx)

State of Connecticut

Website: <https://portal.ct.gov/SDE>

Phone: 860-713-6543

Grade Range: PK-12

[Printable Reports \(PPRs\)](#)

[Next Generation Accountability Report](#)

513,615 students

1,506 schools/programs

\$17,838 per pupil

53,220.0 certified staff FTE

Accountability Index: **74.2**

Information Icon - Click for information about the chart. Next Generation Accountability Metric Icon - Click for indicator number and target or view the full Next Generation Accountability Report here.

- Students





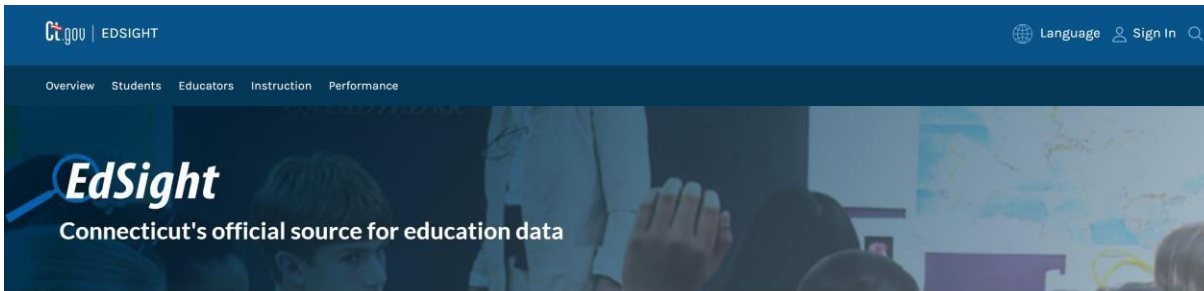
Connecticut Report Cards

- Performance

[ESEA alternate assessment participation\(1%\) data \(.xlsx\)](#)



Profile and Performance Reports – PDFs



EdSight > Profile and Performance Reports


Profile and Performance Reports

See [related links](#).

Year: District: Schools:

Year	District	Organization
2019-20	Achievement First Bridgeport Academy District	-- District Level --
	Achievement First Hartford Academy District	-- District Level --
	Amistad Academy District	-- District Level --
	Andover School District	-- District Level --
	Ansonia School District	-- District Level --
	Area Cooperative Educational Services	-- District Level --






Connecticut State Department of Education
**DISTRICT PROFILE AND PERFORMANCE REPORT
 FOR SCHOOL YEAR 2019–20**

District Information

Grade Range	PK-12
Number of Schools/Programs	8
Enrollment	2,802
Per Pupil Expenditures ¹	\$20,249
Total Expenditures ¹	\$59,431,708

¹ Expenditure data reflect the 2018-19 school year.



Community Information

[AdvanceCT Town Profiles](#) provide summary demographic and economic information for Connecticut's municipalities.

Contents

- Students..... 1
- Educators..... 2
- Instruction and Resources..... 2
- Performance and Accountability..... 4
- Narratives..... 7

Notes

Unless otherwise noted, all data are for 2019-20 and include all grades offered by the district.

In most tables, data are displayed only for the three major race/ethnicity categories. For additional race/ethnicity categories, please visit edsight.ct.gov.

State totals are not displayed as they are not comparable to district totals.

Special Education tables reflect only students for whom the district is fiscally responsible.

* When an asterisk is displayed, data have been suppressed to safeguard student confidentiality, or to ensure that statistics based on a very small sample size are not interpreted as equally representative as those based on a sufficiently larger sample size.

N/A is displayed when a category is not applicable for a district or school.

Students

October 1, 2019 Enrollment²

	Count	District Percent of Total (%)	State Percent of Total (%)
Female	*	*	48.4
Male	1,423	50.8	51.6
American Indian or Alaska Native	7	0.2	0.3
Asian	205	7.3	5.2
Black or African American	104	3.7	12.7
Hispanic or Latino of any race	346	12.3	26.9
Native Hawaiian or Other Pacific Islander	0	0.0	0.1
Two or More Races	104	3.7	3.8
White	2,036	72.7	51.1
English Learners	152	5.4	8.3
Eligible for Free or Reduced-Price Meals	1,019	36.4	43.3
Students with Disabilities ³	380	13.6	16.0

NOTE: To protect student privacy, gender counts are suppressed (*) when fewer than 6 students enrolled in the district identify as non-binary.

² This table represents students in grades PK-12 reported by the district in the Public School Information System (i.e., PSIS Reporting District).

³ Students in this category are students with an individualized education program (IEP) only. This category does not include students with Section 504 plans or services plans.

Chronic Absenteeism and Suspension/Expulsion

	Chronic Absenteeism ⁴		Suspension/Expulsion ⁴	
	Count	Rate (%)	Count	Rate (%)
Female	*	*	33	2.3
Male	101	7.4	72	4.9
Black or African American	*	*	10	8.6
Hispanic or Latino of any race	43	12.6	24	6.4
White	110	5.7	66	3.2
English Learners	14	9.3	*	*
Eligible for Free or Reduced-Price Meals	97	9.8	63	5.8
Students with Disabilities	41	11.6	30	7.2
District	184	6.9	105	3.6
State		12.2		4.9

Number of students in 2018-19 qualified as truant under state statute: 164

Number of school-based arrests: 0

NOTE: In the 2019-20 school year, due to the COVID-19 pandemic, in-person classes were cancelled in mid-March; all districts switched to fully remote instruction for the remainder of the school year. Chronic absenteeism calculations are based only on in-person school days.

⁴ A student is chronically absent if they miss ten percent or greater of the total number of days enrolled in the school year for any reason. Pre-Kindergarten students are excluded from this calculation.

⁵ This column displays the count and percentage of students who receive at least one in-school suspension, out-of-school suspension or expulsion.

Test Scores



EdSight > Smarter Balanced

Smarter Balanced Achievement/Participation

Additional Reports: [Smarter Balanced Growth](#) | [Growth Trajectory Tool](#) | [Performance vs. Growth Bubble Plot](#)

See [related links](#).

Select Grade: All Grades Combined All Grades 3 4 5 6 7 8 11

Year: District: Schools: Subject: Filter By:

Smarter Balanced Assessments, Trend
 State of Connecticut, ELA and Math, All Grades, All Students
[Export csv file](#)

District	Grade	Subject	School Year											
			2015-16			2016-17			2017-18			2018-19		
			Total Number with Scored Tests	Percentage Level 3 or 4 (Met or Exceeded) %	Average VSS	Total Number with Scored Tests	Percentage Level 3 or 4 (Met or Exceeded) %	Average VSS	Total Number with Scored Tests	Percentage Level 3 or 4 (Met or Exceeded) %	Average VSS	Total Number with Scored Tests	Percentage Level 3 or 4 (Met or Exceeded) %	Average VSS
State of Connecticut	03	ELA	38,938	53.9	2438	38,093	51.8	2432	37,523	53.1	2435	38,512	54.3	2437
		Math	38,887	52.8	2438	38,013	53.1	2430	37,470	53.8	2440	38,454	55.0	2443
	04	ELA	38,448	55.5	2480	39,227	54.1	2477	38,372	54.9	2479	37,724	54.6	2478
		Math	38,384	47.9	2478	39,180	50.0	2482	38,304	51.3	2484	37,672	52.5	2486
	05	ELA	39,007	58.7	2517	38,747	58.3	2512	39,589	58.4	2517	38,599	58.1	2516
		Math	38,938	40.8	2501	38,855	42.9	2505	39,533	45.0	2510	38,509	48.5	2513
	06	ELA	39,088	55.0	2530	39,178	54.0	2534	39,014	54.3	2534	39,588	55.3	2538
		Math	38,982	40.6	2521	39,030	43.8	2528	38,942	43.9	2527	39,487	45.4	2530
	07	ELA	40,075	55.2	2559	39,211	54.9	2558	39,385	55.0	2558	39,101	56.1	2560
		Math	39,954	41.8	2538	39,032	42.7	2541	39,281	44.1	2542	38,999	48.1	2547
	08	ELA	39,350	55.5	2574	40,139	53.7	2589	39,414	56.1	2575	39,370	55.8	2574
		Math	39,179	40.3	2551	39,954	41.8	2554	39,298	43.0	2558	39,213	43.5	2558



Next Generation Accountability



EdSight > Next Generation Accountability Results

Next Generation Accountability Results

Additional Reports: [ESSA Milestones](#) | [Next Generation Accountability System Archives](#)

See [related links](#).

Year: District: Schools:

Next Generation Accountability, 2018-19
State of Connecticut
[Export State of Connecticut unformatted .csv file](#)
[Export State of Connecticut formatted .csv file](#)
[Export All Schools and Districts .csv file](#)

Indicator	Index/Rate	Target	Points Earned	Max Points	% Points Earned
1a. ELA Performance Index - All Students	67.7	75	45.1	50	90.2
1b. ELA Performance Index - High Needs Students	56.1	75	38.8	50	77.5
1c. Math Performance Index - All Students	63.1	75	42.0	50	84.1
1d. Math Performance Index - High Needs Students	52.7	75	35.1	50	70.2
1e. Science Performance Index - All Students	63.8	75	42.5	50	85.0
1f. Science Performance Index - High Needs Students	54.2	75	36.1	50	72.2
2a. ELA Academic Growth - All Students	59.9%	100%	59.9	100	59.9
2b. ELA Academic Growth - High Needs Students	55.1%	100%	55.1	100	55.1
2c. Math Academic Growth - All Students	62.5%	100%	62.5	100	62.5
2d. Math Academic Growth - High Needs Students	55.2%	100%	55.2	100	55.2
2e. Progress Toward English Proficiency - Literacy	60.0%	100%	30.0	50	60.0
2f. Progress Toward English Proficiency - Oral	62.1%	100%	26.1	50	52.1
4a. Chronic Absenteeism - All Students	10.4%	<=5%	39.2	50	78.3
4b. Chronic Absenteeism - High Needs Students	16.1%	<=5%	27.8	50	55.7
5. Preparation for CCR - Percent Taking Courses	80.0%	75%	50.0	50	100.0
6. Preparation for CCR - Percent Passing Exams	42.8%	75%	28.4	50	56.7
7. On-track to High School Graduation	88.0%	94%	46.8	50	93.6
8. 4-year Graduation: All Students (2018 Cohort)	88.3%	94%	93.9	100	93.9
9. 6-year Graduation: High Needs Students (2016 Cohort)	83.3%	94%	88.6	100	88.6
10. Postsecondary Entrance (Graduating Class 2018)	70.9%	75%	94.5	100	94.5
11. Physical Fitness (estimated participation rate = 96.4%)	62.9%	75%	35.3	50	70.6
12. Arts Access	51.9%	60%	43.3	50	86.5
Accountability Index			1076.2	1450	74.2

Assessment Participation Rates

FAFSA Completion

Connecticut Free Application for Federal Student Aid (FAFSA®) Completion Rates

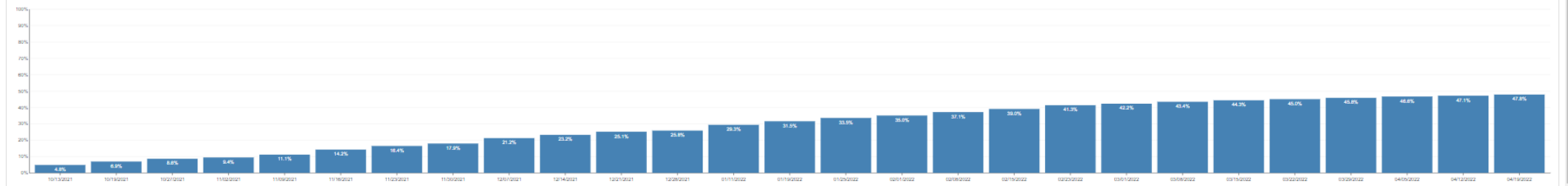
Completion of the [Free Application for Federal Student Aid \(FAFSA®\)](#) is an important step in the path to postsecondary education and is associated with higher rates of college enrollment. In addition to the data presented here, [FAFSA completion information and resources](#) are available for Connecticut schools and districts.

To see a list of common reasons for FAFSA-related issues, please view CSDE's [FAFSA Troubleshooting document](#).

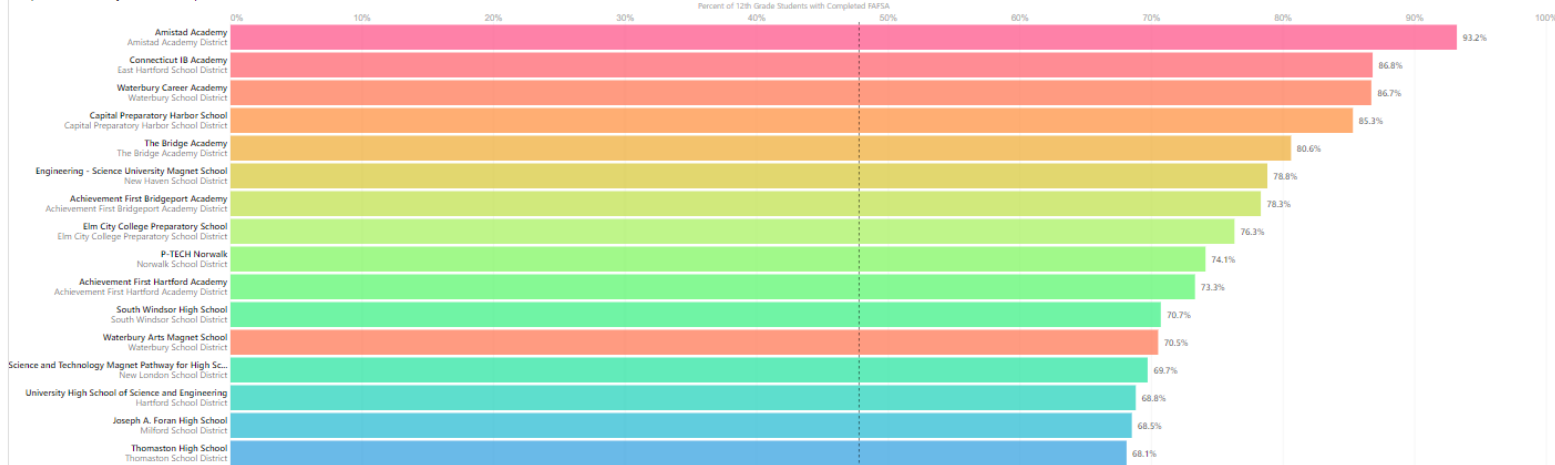
Use the report filters to update the bar chart and list table below. In addition, the following data files contain year-to-date and prior years FAFSA completion data:

- [FAFSA Completion, 2021-2022](#)
- [FAFSA Completion, 2020-2021](#)
- [FAFSA Completion, 2019-2020](#)

Statewide FAFSA Completion Rate



Top 20 Schools by FAFSA Completion Rate



Filters Clear Filters

District
Select district

Filtering by district will update filter options for school.

School
Select school

Alliance District
All

FAFSA Completion Challenge School
All

Percent High Needs At
All

Organization Type
Select organization type

Upload Date
04/19/2022

Search
Type the search text



Supporting Student Participation - Attendance



Supporting Student Participation in 2021-22

In 2021-22, all school districts are expected to provide full-time, in-person learning for all students. Remote learning may only be used to provide continued educational opportunities: (1) for students who must be in COVID-19 isolation or quarantine, (2) to address localized outbreaks in a school or specific school district, and (3) in rare and individualized circumstances, for students with elevated risks from COVID-19 exposure due to co-habiting family members with documented vulnerability to COVID-19.

The data on this page are intended to provide transparency regarding student attendance and learning models in public school. Check out the CSDE's [Chronic Absence Page](#) for resources on supporting greater student attendance.

Monthly Attendance Report

To support attendance and engagement of students as they participate in varied school learning models, the CSDE established a new system to collect student-level attendance data on a monthly basis. This collection allows for more detailed reporting of student attendance by district, school, and student group. The following reports are the monthly summaries for the 2020-21 academic year:

[+ 2020-21 Reports \(PDF\)](#)

District-level disaggregated data by student group along with data visualizations will be used by CSDE staff to identify and support districts where year-to-date attendance is substantially lower than in the previous school year. CSDE is also partnering with the State Education Resource Center (SERC) to build communities of practice and a system of supports for districts that bring together the latest research, national experts, and promising practices.

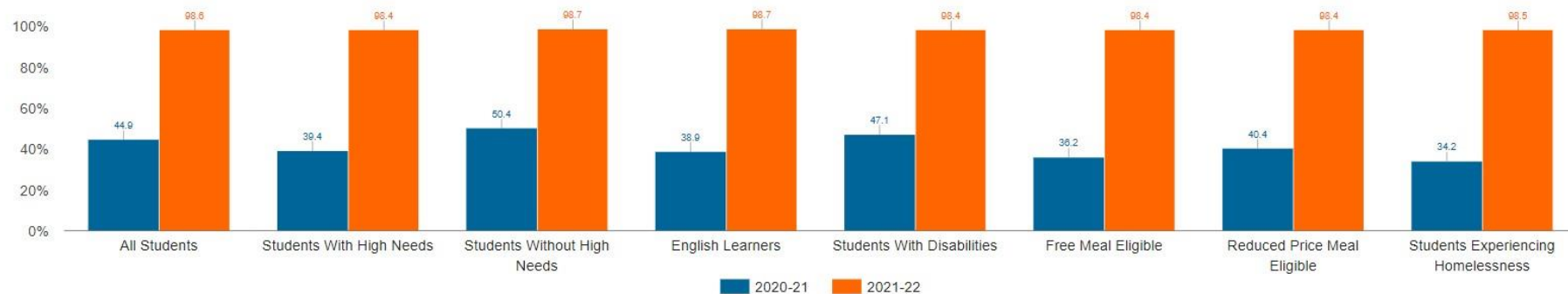
An interactive map and additional data files are also available below.

Statewide Attendance

Data Files

- Attendance Rates for State and Districts, Student Groups by tab (.xlsx)
- Chronic Absence Rates and Remote Attendance Information for State and Districts, Student Groups by tab (.xlsx)
- Attendance Rates for Schools (.xlsx)

Percentage of Days In-Person by Student Group (YTD as of February 2022)



Note: Year-to-date, 149,904 (30.3%) of students have experienced at least one remote day. Of these students, the average number of remote days per student is 5.0.



What's new?

- New user interface
- Some highly interactive dashboards with dynamic visualizations
- Some new data

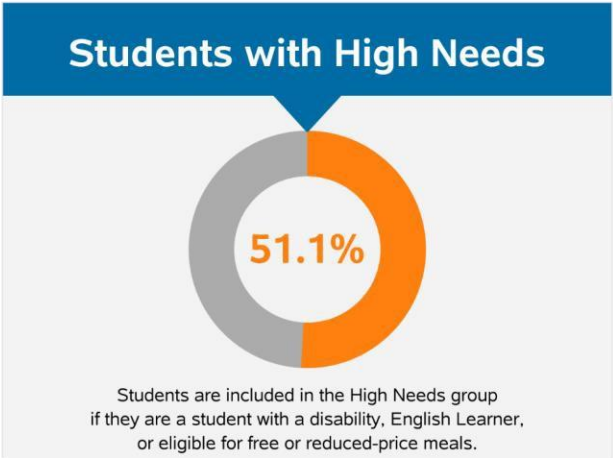


New Home Page!



Welcome to EdSight

Interactive data portal for Connecticut's over 200 districts of 1,500 public schools and programs



Connecticut Report Cards

Visual, multi-year reports with up-to-date district and school metrics

[View Report Cards](#)

Performance Reports

Printable reports that provide key metrics for a district or school for a single year

[View Performance Reports](#)



Interactive Dashboard:

Educator Diversity

Educator Diversity Dashboard

Additional Reports: [Educator Race/Ethnicity](#)

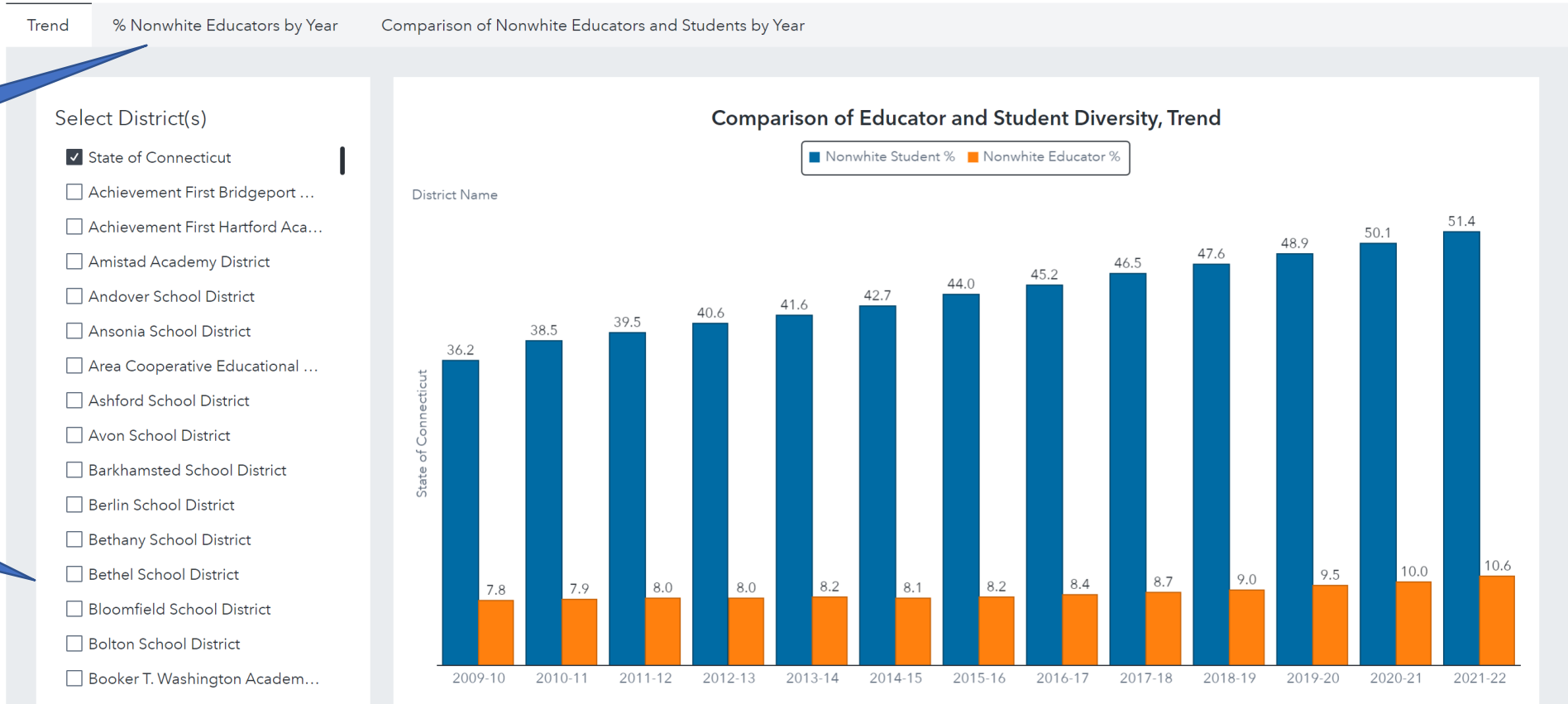
See [related links](#).

Access Raw Data

[VIEW DATA](#)

More tabs!

Multi-select!



Interactive Dashboard: Educator Diversity

The screenshot shows the 'Educator Diversity Dashboard' on the 'ct.gov | EDSIGHT' website. The navigation bar includes 'Overview', 'Students', 'Educators', 'Instruction', and 'Performance'. The main title is 'Educator Diversity Dashboard', with a link for 'Additional Reports: Educator Race/Ethnicity' and a 'VIEW DATA' button. The dashboard is currently on the '% Nonwhite Educators by Year' tab, with other tabs for 'Trend' and 'Comparison of Nonwhite Educators and Students by Year'. A 'Select School Year' dropdown is set to '2021-22', with other years from 2020-21 to 2009-10 available. Below the year selector are 'Map' and 'Chart' view options. The 'Map' view is active, displaying a map of Connecticut school districts shaded in blue. A 'Select Organization Type' dropdown is set to 'Public School Districts', with 'Regional School Districts' as an alternative. A text box explains that hovering over a district on the chart provides data tips. Callouts from the left side of the slide point to the 'Map' button, the 'Chart' tab, and a specific district on the map.

ct.gov | EDSIGHT

Language Sign In

Overview Students Educators Instruction Performance

Educator Diversity Dashboard

Additional Reports: [Educator Race/Ethnicity](#)

See [related links](#).

VIEW DATA

Trend % Nonwhite Educators by Year Comparison of Nonwhite Educators and Students by Year

Select School Year

2021-22 2020-21 2019-20 2018-19 2017-18 2016-17 2015-16 2014-15 2013-14 2012-13 2011-12 2010-11 2009-10

Map Chart

% Nonwhite Educators (public and regional school districts only)

Select Organization Type

Public School Districts

Regional School Districts

To see visualizations for other organization types, click on the **Chart** tab above the map.

Select Map or
Chart view

See other reports
and documentation

Hover on a
district for
data tips!



Interactive Dashboard: Enrollment

Public School Enrollment

Additional Reports: [Nonpublic School Enrollment and Staff Counts](#)

See [related links](#). VIEW DATA

State Dashboard | District Dashboard | School Dashboard

State Enrollment Dashboard

Select School Year: 2021-22

Total Students

514K

Total Districts

201

Enrollment by District

Double-click map to reset zoom.

Ten Year Trend by Student Group

All Students | High Needs | Gender | Grade | Race | English Learner | Special Education | Meal Elig

All Students

School Year	Enrollment
2012-13	554,804
2013-14	549,877
2014-15	546,349
2015-16	541,815
2016-17	538,899
2017-18	535,025
2018-19	530,612
2019-20	527,829
2020-21	513,079
2021-22	513,615

Note District and School-Level Dashboards

Select different groups



Interactive Dashboard: Enrollment

High Needs Selected

ct.gov | EDSIGHT Language Sign In

Overview Students Educators Instruction Performance

Public School Enrollment

Additional Reports: [Nonpublic School Enrollment and Staff Counts](#)

See [related links](#). VIEW DATA

State Dashboard District Dashboard School Dashboard

State Enrollment Dashboard

Select School Year: 2021-22

Total Students

514K

Total Districts

201

Enrollment by District

Double-click map to reset zoom.

Ten Year Trend by Student Group

< All Students **High Needs** Gender Grade Race English Learner Special Education Meal Elig >

High Needs Status: ■ High Needs ■ Non-High Needs

School Year	High Needs (%)	Non-High Needs (%)
2012-13	44.41%	55.59%
2013-14	45.06%	54.94%
2014-15	45.82%	54.18%
2015-16	46.27%	53.73%
2016-17	45.08%	54.92%
2017-18	46.14%	53.86%
2018-19	50.74%	49.26%
2019-20	52.33%	47.67%
2020-21	52.11%	47.89%
2021-22	51.10%	48.90%

The CSDE uses student-level demographic data to create a **High Needs** student group. To be included in the **High Needs** student group a student must be a student with a disability, English Learner or a student eligible for free- or reduced-price meals.



Interactive Dashboard: College Outcomes

College Enrollment, Persistence, and Graduation Dashboard

Additional Reports: [College Entrance and Persistence](#)

See [related links](#).

Don't miss out on the other tabs!

VIEW DATA

Dashboard Progress Report (Graduating Class) District and Town Maps

College Enrollment, Persistence, and Graduation by Graduating Class

Select District

Select School

Select Student Group

School Name

Free/Reduced-Price Meal Eligibility (2-level)

Select district, school, and/or student group

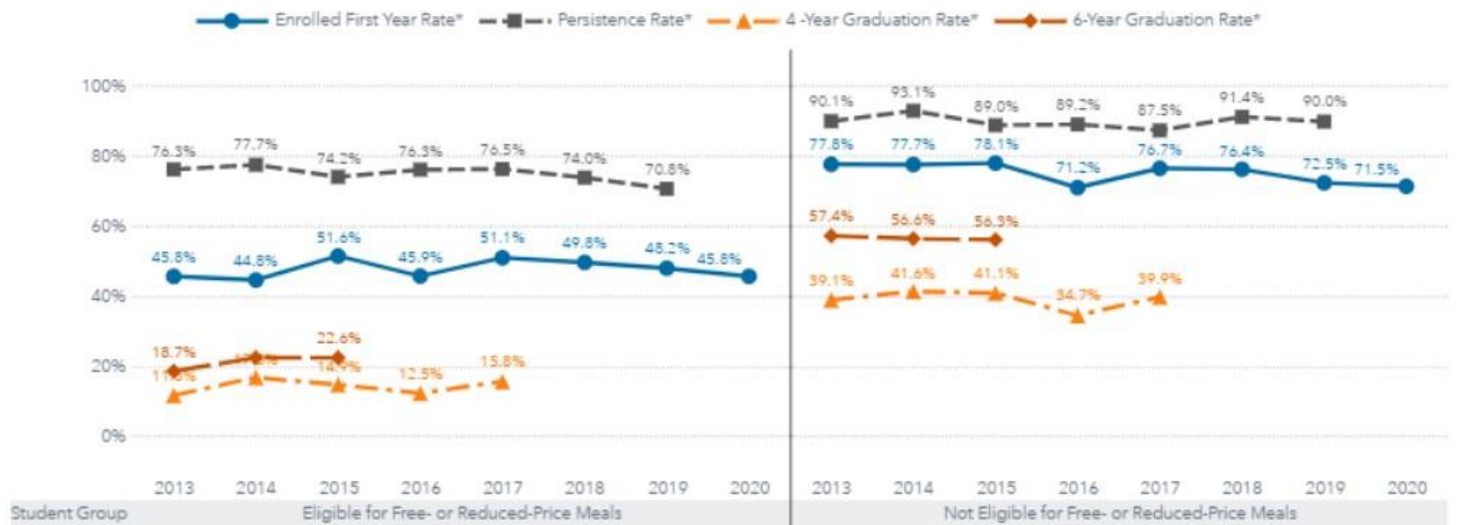
Key Insights

Of the **550** students in the 2015 Graduating Class, **66.2%** enrolled in a college or university within the first year after graduation.

Of those freshmen, **83.8%** persisted into their sophomore year.

Within four years, **29.3%** of the high school graduating class earned a college degree, and within six years, **41.1%** had earned a college degree.

Percent of Students Count of Students



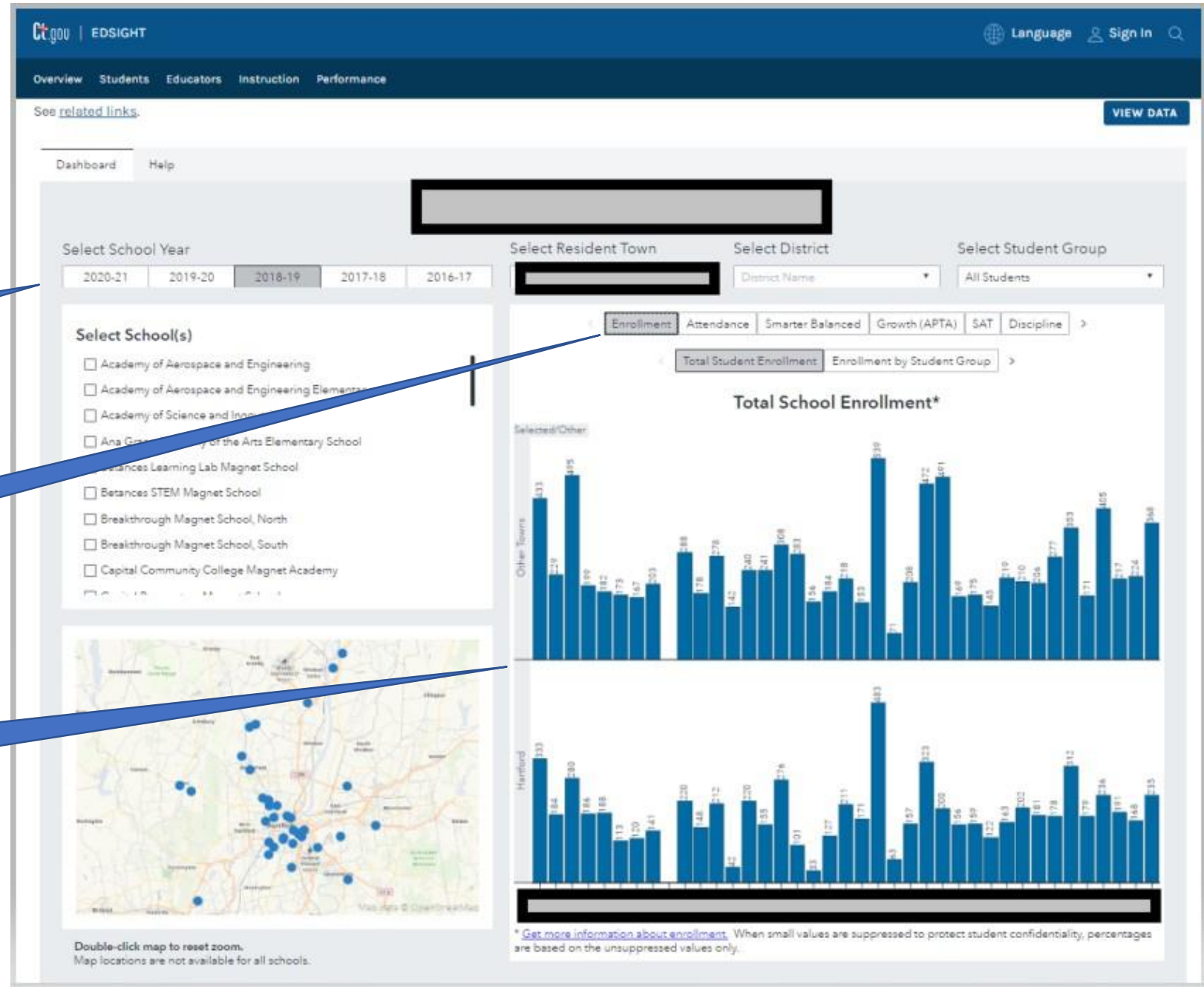
Interactive Dashboard: School Choice

e.g., Sheff Magnet Schools

Select year,
resident town,
student group

See different
measures

Compare focal
town to all
other towns



Interactive Dashboard: Resident Town

ct.gov | EDSIGHT

Overview Students Educators Instruction Performance

Resident Town Dashboard

Additional Reports: [Sheff Magnet Schools Dashboard](#)

See [related links](#).

[VIEW DATA](#)

Dashboard Help

Filters Selected: 2020-21 | All School Types | <No item selected> | Free/Reduced Price Meal Eligibility (2-level)

Select School Year: 2020-21 | 2019-20 | 2018-19 | 2017-18 | 2016-17

Select School Type: All School Types

Select Resident Town: Town Name

Select Student Group: Free/Reduced Price Meal Eligibility (...)

Enrollment Attendance Smarter Balanced Growth (APTA) SAT Discipline

Total Students
509K

Number of Towns
169

Total Student Enrollment*

School Type	Enrollment
Public Schools	410,490
Regional Schools	22,971
Other Magnet	17,177
Program Public Charter Schools	12,248
Open Choice	3,421
CT Technical Educa... Endowed and Incorporate...	11,087
Sheff Magnet	18,189

Enrollment by Student Resident Town

Percent of Enrollment by Student Group*

School Type	Eligible for Free- or Reduced-Price Meals (%)	Not Eligible for Free- or Reduced-Price Meals (%)
Public Schools	39.85%	60.15%
Regional Schools	16.52%	83.48%
Other Magnet	60.05%	39.95%
Program Public Charter Schools	65.81%	34.19%
Open Choice	70.25%	29.75%
CT Technical Educa... Endowed and Incorporate...	49.58%	50.42%
Sheff Magnet	66.52%	33.48%

Student Group

- Eligible for Free- or Reduced-Price Meals
- Not Eligible for Free- or Reduced-Price Meals

* Get more information on enrollment calculations. When small values are suppressed to protect student confidentiality, percentages are based on the unsuppressed values only.

Select year, resident town, student group

See different measures

Hover on town for counts!



Next Steps

- Redirect to new site in the coming weeks
- Create new dashboards and migrate legacy reports
- Provide informational sessions for different stakeholder groups

