

PREEMERGENCE HERBICIDE OPTIONS FOR COMMON WEEDS OF CONTAINER AND LANDSCAPE ORNAMENTALS

Assistant Weed Scientist

Email: Jatinder.Aulakh@ct.gov



Hairy bittercress (*Cardamine Hirsuta*)

Family: Brassicaceae

- ✓ Good to excellent control: Biathlon, Broadstar, Casoron, Dimension, Freehand, Gallery, Gemini, Goal, HGH 75, Marengo, OH2, Regal OO, Ronstar, Rout, Snapshot TG, Specticle, Surflan, Sureguard, Tower.
- ✓ Fair control: Barricade, Pendulum, Princep, Regalkade, XL.
- ✓ Poor control: Dacthal, Pennant magnum, Trifluralin.



Common chickweed (*Stellaria media*)

Family: Caryophyllaceae

- ✓ Good to excellent control:
Barricade, Biathlon, Broadstar,
Casoron, Devrinol, Dimension,
Freehand, Gallery, Gemini, HGH 75,
Marengo, OH2, Pendulum, Princep,
Regalkade, Regal Star II, Rout,
Snapshot TG, Specticle, Sureguard,
Surflan, Tower, Trifluralin, XL.
- ✓ Fair control: Goal, Pennant
magnum, Regal OO.
- ✓ Poor control: Ronstar.



Mouse-ear chickweed (*Cerastium vulgatum*)

Family: Caryophyllaceae

- ✓ Good to excellent control:
Barricade, Biathlon, Broadstar, Casoron, Dimension, Freehand, Gallery, Gemini, HGH 75, Marengo, OH2, Pendulum, Regalkade, Regalstar II, Rout, Snapshot TG, Specticle, Sureguard, Tower, Trifluralin, XL.
- ✓ Fair control: Regal OO.
- ✓ Poor control: Devrinol, Princep, Ronstar, Surflan.



Yellow woodsorrel (*Oxalis stricta*)

Family: Oxalidaceae

- ✓ Good to excellent control: Barricade, Biathlon, Broadstar, Casoron, Dimension, Freehand, Gallery, Goal, HGH 75, OH2, Pendulum, Regalkade, Regal OO, Regal star II, Ronstar, Rout, Snapshot TG, Sureguard, Surflan, Tower.
- ✓ Fair control: Gemini, Marengo, Specticle, Trifluralin, XL.
- ✓ Poor control: Devrinol, Pennant magnum, Princep.



Spotted spurge (*Chamaesyce maculata*)

Family: Euphorbaceae

- ✓ Good to excellent control:
Barricade, Broadstar, Casoron,
Dimension, Freehand, Gemini,
Marengo, Specticle, Regalkade,
Sureguard, Surflan, Tower.
- ✓ Fair control: Biathlon, Dacthal,
Gallery, Goal, HGH 75, OH2,
Pendulum, Princep, Regal OO,
Regal Star II, Rout, Snapshot TG, XL.
- ✓ Poor control: Devrinol, Pennant
magnum, Ronstar, Trifluralin.



Common purslane (*Portulacacca oleracea*)

Family: Portulacaceae

- ✓ Good to excellent control:
Barricade, Biathlon, Broadstar, Casoron, Devrinol, Freehand, Gallery, Gemini, Goal, HGH 75, Marengo, OH2, Pendulum, Princep, Regalkade, Ronstar, Rout, Snapshot TG, Specticle, Surflan, Sureguard, Tower, Trifluralin, XL.
- ✓ Fair control: Dimension, Pennant magnum.



Common groundsel (*Senecio vulgaris*)

Family: Asteraceae

- ✓ Good to excellent control:
Biathlon, Broadstar, Casoron,
Devrinol, Goal, HGH 75, Marengo,
OH2, Princep, Regal OO, Rout,
Specticle, Sureguard, Trifluralin.
- ✓ Fair control: Freehand, Gallery,
Gemini, Snapshot TG, Surflan,
Tower, XL.
- ✓ Poor control: Barricade,
Dimension, Pendulum, Pennant
magnum, Regalkade, Ronstar,
Trifluralin.



Horseweed (*Conyza canadensis*)

Family: Asteraceae

- ✓ Good to excellent control: Biathlon, Broadstar, Casoron, Freehand, Gallery, Gemini, HGH 75, Marengo, OH2, Princep, Regal OO, Rout, Snapshot TG, Specticle, Sureguard.
- ✓ Fair control: Barricade, Devrinol, Dimension, Goal, Pennant magnum, Regalkade, Surflan.
- ✓ Poor control: Pendulum, Ronstar.



Fleabane (*Erigeron bonariensis*)

Family: Asteracea

- ✓ Good to excellent control: Biathlon, Casoron, Gallery, Gemini, Marengo, OH2, Snapshot TG, Specticle, Surflan.



Willowherb (*Epilobium ciliata*)

Family: Onagraceae

- ✓ Good to excellent control: Broadstar, Freehand, Marengo, Regal OO, Ronstar, Specticle, Sureguard, Surflan.
- ✓ Fair control: Biathlon, Goal, HGH 75, OH2, Rout, Tower, XL.
- ✓ Poor control: Barricade, Gallery, Gemini, Pendulum, Pennant magnum, Regalkade, Snapshot TG, Trifluralin.



Mulberry weed (*Fatoua villosa*)

Family: Moraceae

- ✓ Good to excellent control:
Biathlon, Broadstar, Freehand,
Gallery, Gemini, Goal, HGH 75,
OH2, Regal OO, Rout, Sureguard,
Surflan.
- ✓ Fair control: Barricade, Dimension,
Pendulum, Regalkade, Ronstar,
Snapshot TG, Tower.
- ✓ Poor control: Casoron, Devrinol,
Pennant magnum, Trifluralin.



Liverwort (*Marchantia polymorpha*) from spores

Family: Marchantiaceae

- ✓ Good to excellent control: Broadstar, Sureguard, Tower.
- ✓ Fair control: Freehand.



Pearlwort (*Sagina procumbens*)

Family: Caryophyllaceae

- ✓ Good to excellent control: Barricade, Biathlon, Freehand, Gallery, HGH 75, OH2, Pendulum, Pennant magnum, Regalkade, Regal OO, Rout.
- ✓ Fair control: Broadstar, Sureguard.
- ✓ Poor control: Casoron, Devrinol, Princep, Tower.



American burnweed (*Erechtites hieraciifolius*)

Family: Asteracea

- ✓ Good to excellent control:
Biathlon, Broadstar, Freehand,
Goal, HGH 75, Marengo, OH2,
Rout, Specticle, Sureguard,
Tower.
- ✓ Fair control: NA.
- ✓ Poor control: Barricade,
Gallery, Pendulum, Regalkade,
Snapshot TG, Trifluralin.



Annual sowthistle (*Sonchus oleraceus*)

Family: Asteraceae

- ✓ Good to excellent control: Biathlon, Broadstar, Casoron, Devrinol, Gallery, Gemini, Goal, HGH 75, Marengo, OH2, Pendulum, Ronstar, Rout, Specticle, Sureguard.
- ✓ Fair control: Freehand, Princep, Snapshot TG, Surflan, Tower.
- ✓ Poor control: Barricade, Regalkade.



Smartweed (*Polygonum sp.*)

Family: Polygonaceae

- ✓ Good to excellent control:
Broadstar, Casoron,
Devrinol, Goal, HGH 75,
Princep, Ronstar, Snapshot
TG, Sureguard.
- ✓ Fair control: Freehand,
Gallery, Gemini, Pendulum,
Pennant magnum, Surflan,
Trifluralin.



Common ragweed (*Ambrosia artemisia*)

Family: Asteraceae

- ✓ Good to excellent control: Broadstar, Casoron, Princep, Ronstar, Snapshot TG, Sureguard.
- ✓ Fair control: Barricade, Devrinol, Freehand, Gallery, Goal, Marengo, Regalkade, Specticle, Surflan, Tower.
- ✓ Poor control: Dimension, Pendulum, Pennant magnum, Trifluralin.



Redroot pigweed (*Amaranthus retroflexus*)

Family: Amaranthaceae

- ✓ Good to excellent control:
Barricade, Biathlon, Broadstar, Casoron, Devrinol, Gemini, Goal, HGH 75, OH2, Pendulum, Princep, Regalkade, Regal-OO, Ronstar, Rout, Snapshot TG, Surflan, Sureguard, Tower, Trifluralin.
- ✓ Fair control: Freehand, Marengo, Pennant magnum, Specticle.
- ✓ Poor control: Dimension, Gallery.



Common lambsquarters (*Chenopodium album*)

Family: Chenopodiaceae

- ✓ Good to excellent control:
Barricade, Broadstar, Casoron,
Devrinol, Gemini, Goal, HGH 75,
Marengo, Pendulum, Princep,
Regalkade, Ronstar, Rout,
Snapshot TG, Specticle, Surflan,
Trifluralin.
- ✓ Fair control: Dimension,
Freehand, Gallery, Pennant
magnum, Sureguard, Tower.



Common primrose (*Oenothera biennis*)

Family: Onagraceae

- ✓ Good to excellent control: Biathlon, Casoron, Freehand, Goal, Marengo, OH2, Pendulum, Princep, Rout, Snapshot TG, Specticle, Surflan.
- ✓ Fair control: Gallery, Pennant magnum, Ronstar.
- ✓ Poor control: Barricade, Devrinol, Gemini.



Hairy galinsoga (*Galinsoga quadriradiata*)

Family: Asteraceae

- ✓ Good to excellent control: Broadstar, Devrinol, Freehand, Gallery, Gemini, Goal, HGH 75, Pennant magnum, Princep, Snapshot TG, Sureguard.
- ✓ Fair control: Barricade, Regalkade, Ronstar, Surflan, Tower.
- ✓ Poor control: Casoron, Pendulum, Trifluralin.



Cudweed (*Gnaphalium sp.*)

Family: Asteraceae

- ✓ Good to excellent control:
Biathlon, Casoron, Devrinol,
Freehand, Gallery, Gemini,
HGH 75, Marengo, OH2,
Pendulum, Princep, Regal OO,
Snapshot TG, Specticle.
- ✓ Fair control: NA.
- ✓ Poor control: Pennant
magnum, Surflan.



Datura (*Datura stramonium*)

Family: Solanacea

- ✓ Good to excellent control: Broadstar, Gemini, Goal, HGH 75, Princep, Snapshot TG, Sureguard.
- ✓ Fair control: Gallery.
- ✓ Poor control: Biathlon, Casoron, OH2, Pendulum, Pennant magnum, Rout, Surflan, Trifluralin.



Large crabgrass (*Digitaria sanguinalis*)

Family: Poaceae

- ✓ Good to excellent control:
Barricade, Biathlon, Casoron,
Devrinol, Dimension, Freehand,
Gemini, HGH 75, Marengo, OH2,
Pendulum, Pennant magnum,
Regal OO, Regal Star II, Ronstar,
Regalkade, Rout, Snapshot TG,
Specticle, Surflan, Tower,
Trifluralin, XL.
- ✓ Fair control: Broadstar, Dacthal,
Goal, Sureguard, .
- ✓ Poor control: Gallery, Princep.



Annual bluegrass (*Poa annua*)

Family: Poaceae

- ✓ Good to excellent control:
Barricade, Biathlon, Casoron,
Devrinol, Dimension, Freehand,
Gemini, HGH 75, Marengo, OH2,
Pendulum, Pennant magnum,
Princep, Regal OO, Regal Star II,
Ronstar, Regalkade, Rout,
Specticle, Snapshot TG, Surflan,
Tower, Trifluralin, XL.
- ✓ Fair control: Broadstar, Goal,
Sureguard, .
- ✓ Poor control: Gallery.



Barnyardgrass (*Echinochloa crus-galli*)

Family: Poaceae

- ✓ Good to excellent control:
Barricade, Biathlon, Devrinol,
Dimension, Freehand, Gemini,
HGH 75, Marengo, OH2,
Pendulum, Pennant magnum,
Regal OO, Ronstar, Regalkade,
Rout, Snapshot TG, Specticle,
Surflan, Tower, Trifluralin, XL.
- ✓ Fair control: Broadstar, Goal,
Princep, Sureguard, .
- ✓ Poor control: Gallery.



Goosegrass (*Eleusine indica*)

Family: Poaceae

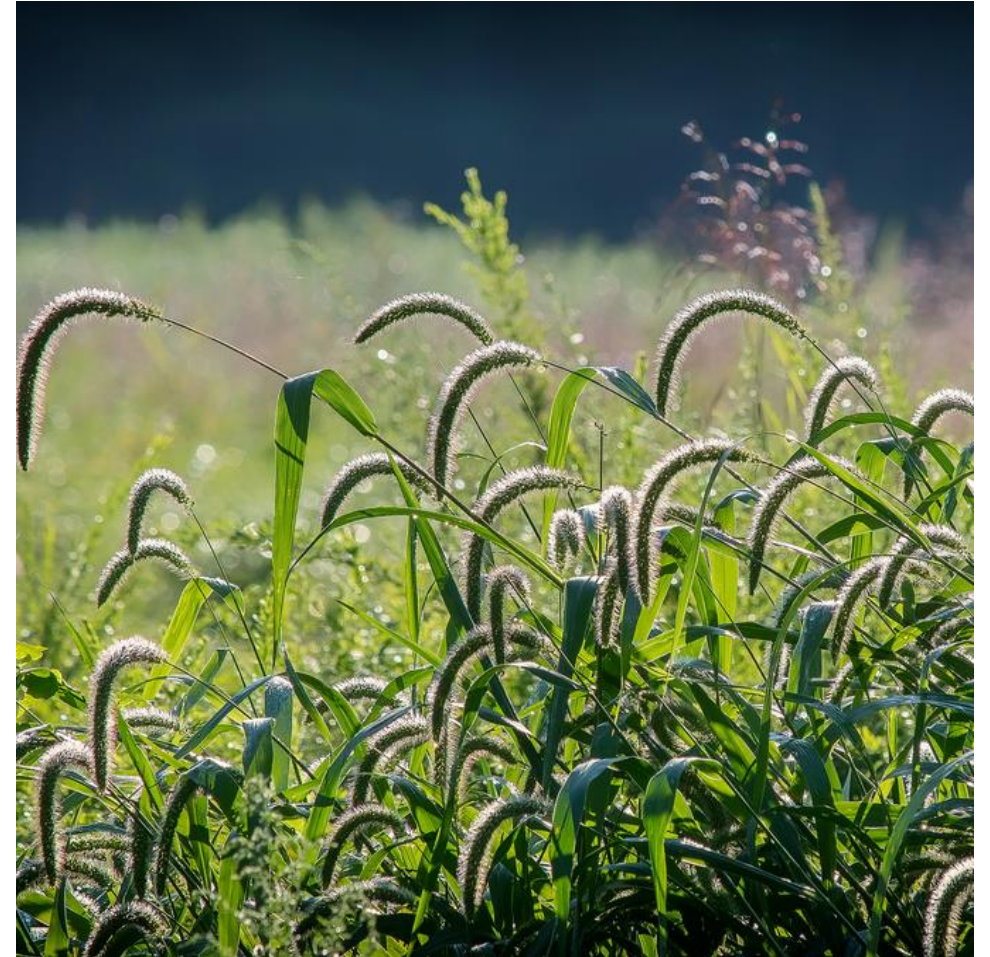
- ✓ Good to excellent control: Barricade, Biathlon, Devrinol, Dimension, Freehand, Gemini, HGH 75, Marengo, OH2, Pendulum, Pennant magnum, Princep, Regal OO, Regal Star II, Ronstar, Regalkade, Rout, Snapshot TG, Specticle, Surflan, Tower, Trifluralin, XL.
- ✓ Fair control: Broadstar, Goal, Sureguard, .
- ✓ Poor control: Casoron, Dacthal, Gallery.



Foxtails (*Setaria sp.*)

Family: Poaceae

- ✓ Good to excellent control:
Barricade, Biathlon, Casoron,
Devrinol, Dimension, Freehand,
Gemini, HGH 75, Marengo, OH2,
Pendulum, Pennant magnum,
Ronstar, Regalkade, Rout,
Snapshot TG*, Specticle, Surflan,
Tower, Trifluralin, XL.
 - ✓ Fair control: Broadstar, Goal,
Princep, Sureguard, .
 - ✓ Poor control: Gallery.
- * Fair control of green and yellow foxtails.



Fall panicum (*Panicum dichotomiflorum*)

Family: Poaceae

- ✓ Good to excellent control: Devrinol, Gemini, HGH 75, Pendulum, Pennant magnum, Princep, Ronstar, Rout, Snapshot TG, Surflan, Tower.
- ✓ Fair control: Broadstar, Freehand, Sureguard.
- ✓ Poor control: Gallery.



Sandbur (*Cenchrus sp.*)

Family: Poaceae

- ✓ Good to excellent control: Devrinol, Freehand, HGH 75, Marengo, Pendulum, Rout, Snapshot TG, Specticle, Tower, Trifluralin, XL.
- ✓ Fair control: Pennant magnum.
- ✓ Poor control: Gallery, Princep.



Yellow nutsedge (*Cyperus esculentus*)

Family: Cyperaceae

- ✓ Good to excellent control: Casoron.
- ✓ Fair control: Freehand, Pennant magnum, Tower.
- ✓ Poor control: Barricade, Biathlon, Broadstar, Dacthal, Devrinol, Dimension, Gallery, Gemini, Goal, HGH 75, Marengo, OH2, Pendulum, Princep, Regalkade, Regal OO, Ronstar, Rout, Snapshot, Specticle, Sureguard, Surflan, Trifluralin, XL.



Annual sedge (*Cyperus compressus*)

Family: Cyperaceae

- ✓ Good to excellent control: Freehand, Pennant magnum, Tower.
- ✓ Fair control: Biathlon, Marengo, OH2, Pendulum, Rout, Specticle.
- ✓ Poor control: Barricade, Broadstar, Gallery, Regalkade, Sureguard, Trifluralin.



Rice flatsedge (*Cyperus iria*)

Family: Cyperaceae

- ✓ Good to excellent control: Freehand, Pennant magnum, Tower.
- ✓ Fair control: Biathlon, Marengo, OH2, Pendulum, Rout, Specticle.
- ✓ Poor control: Barricade, Broadstar, Gallery, Regalkade, Sureguard, Trifluralin.

