

# Unusual Vegetables to Grow in your Garden



Abigail A. Maynard

Department of Forestry and Horticulture

The Connecticut Agricultural Experiment Station



# Agriculture in Connecticut

- Less dairy and tobacco and more diversity
- Over 65% farms are less than 50 acres
- Number of farms of increased to 4900
- 117 farmers markets attended by 360 farmers in 2008



# About 560 farms have roadside stands



# New Crops Program

- Crops chosen because they had a expanding market in Connecticut
- Over 35 fruits and vegetables have been studied
- Cultural trials of crops not normally grown in Connecticut
- Varietal trials of popular vegetables
- Station Bulletins and fact sheets





# Globe Artichokes



# Globe Artichoke

- Grown in California with 40% of the crop ending up between New York and Boston
- Usually a biennial – grows vegetatively in the 1<sup>st</sup> year, flowers in the 2<sup>nd</sup> year
- Eat the unopened flower bud
- Will not survive our winter
- Grown in Connecticut as an annual



# Vernalize seeds





# Germinated seeds



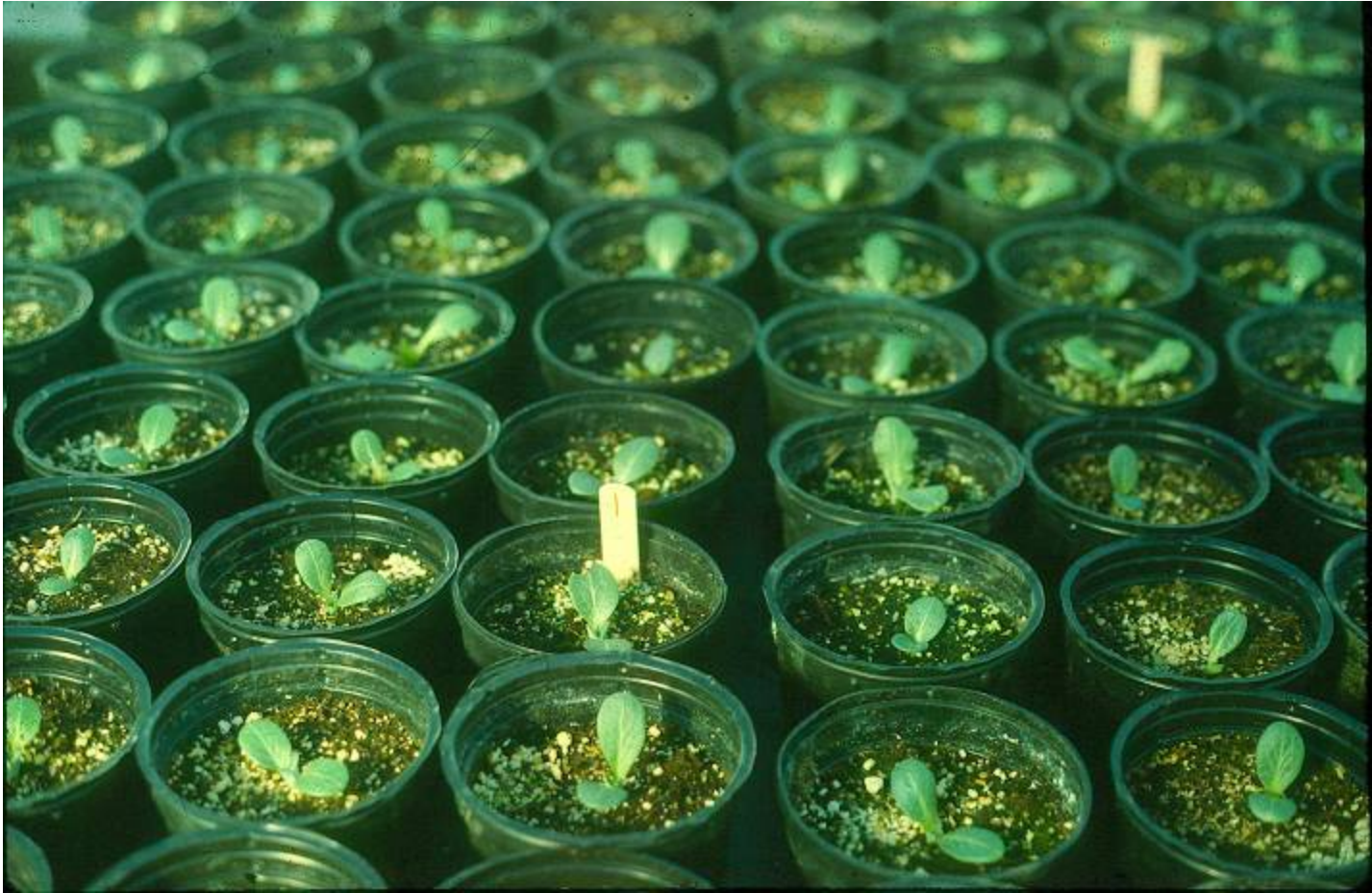


# Planting germinated seeds





# Potted seedlings



# Seedlings in greenhouse





# Seedlings in cold frame



# Mulched with leaves





# Mulched with hay









# Drip irrigation with artichoke





# Harvest in Aug. and Sept.





# Diversity of artichokes











# Artichoke flower





# Gibberillic Acid



# Overwintering plants





# Harvest of overwintered plants



# Belgian Endive





# Belgian Endive

- Grown in 2 stages – roots in summer and forced in winter
- Leaves grown in summer are bitter and discarded
- Chiccons (regrowth of leaves) are produced in 3 weeks in the dark
- Provides winter income for growers



# Roots grown in summer





# Bolted Belgian Endive



# Belgian Endive in Fall





# Harvested roots



# Trimming roots

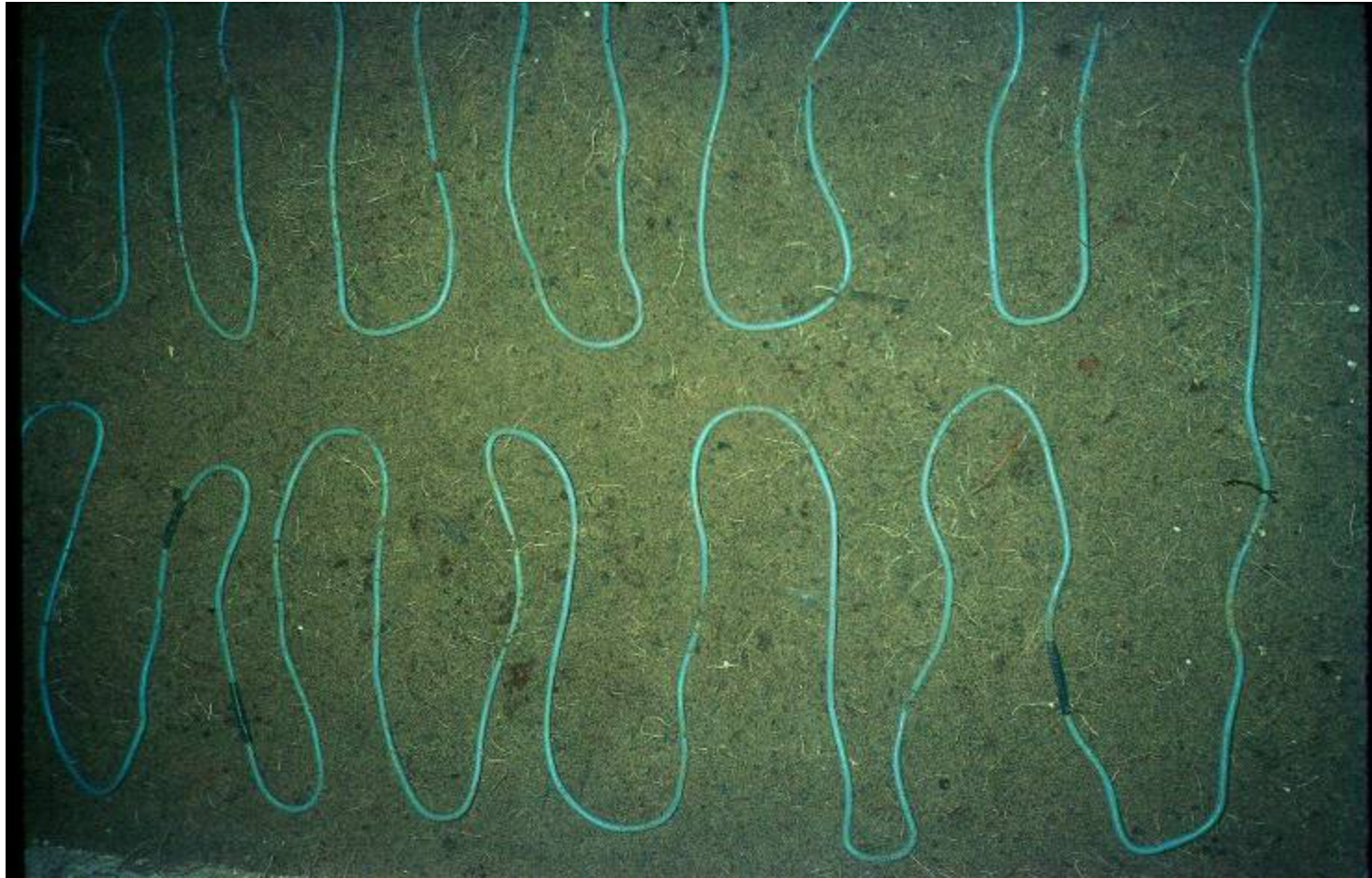




# Cut roots in storage



# Heating coil in forcing bed





# Planting roots



# Roots in forcing bed





# Watering roots



# Watering cover material





# Forcing bed in basement



# Side view of chicons





# Harvested chiccons and roots



# Cutting and trimming chiccons





# Chicons ready for market



# Remay on top of roots







# Board on top of insulation





# Weight on top of board



# Chicons ready for harvest





# Chicons ready for harvest



# Overmature roots





# Green chicon



# Home forcing





# Home yield



# Calabaza





# Calabaza (Tropical Pumpkin)

- Normally grown in the south (Florida) with 120 days to maturity
- Normally very long-vined (20+feet)
- We are developing a cultivar that matures in 90 days on shorter vines



# Trials with plastic mulch





# Bare soil vs. plastic mulch





# Vines starting to run





# Mid-season





# Vining habit of Calabaza





# Fall harvest





# Crop variability





# Immature Calabaza



# Mature calabaza











# Rotted Interior



# Powdery mildew





# Sweet Potatoes



# Sweet Potatoes

- Normally grown in the south with a long growing season
- Usually grown in hills
- Very sensitive to cold weather
- Deer candy
- Trials with plastic/no plastic and hills/no hills





# Remay trials



# Remay effect





# 1 month after planting





# 2 months after planting





# Fall harvest









# Carolina Ruby



# Carolina Ruby flowers





# Jilo



# Jilo (African Eggplant)

- Grown principally in Nigeria
- Also a minor crop in Brazil where its principal use is in vegetable stew (ratatouille)
- Very popular with Brazilian population in Connecticut





# Jilo plants



# Normally picked green





# Jilo fully ripe



# Plant Science Day Aug. 5th





Abigail A. Maynard  
Department of Forestry and Horticulture  
123 Huntington Street  
P. O. Box 1106  
New Haven, CT 06504

Phone: 203.974.8516

---

Email: [Abigail.Maynard@ct.gov](mailto:Abigail.Maynard@ct.gov)

Website: [www.ct.gov/caes](http://www.ct.gov/caes)

