

Plant Science Day Celebration: A History



Dr. Kirby C. Stafford III
Department of Entomology
The Connecticut Agricultural Experiment Station



First in America

ESTABLISHED 1875 BY THE GENERAL ASSEMBLY

Early Station Plantings – 1910



At our Huntington Street, New Haven, CT location purchased in 1882



The Connecticut Agricultural Experiment Station
Putting Science to Work for Society since 1875

Centerville Farm

- Another very useful adjunct to the Station work was the experimental field in Centerville (which is now Norwood Avenue at the intersection of Whitney and Washington Avenues in Hamden).
- Experimental breeding work with corn and tobacco, testing of lime-sulfur summer sprays on fruit trees, ...and the handling of a number of field crops was conducted.
- Plots were also available at various cooperating farms such as one in the Spring Glen area of Hamden (now a shopping center).
- These sites were leased in 1908, 1909, 1910 and easily reached from New Haven by trolley.

First Field Meeting

“On the 10th of August 1910, a field meeting was held at the Station, to informally dedicate the new building, named the Johnson Laboratory, at which more than four hundred farmers and their wives were present. In the afternoon, this company went from the Station to the Centerville field and inspected and informally discussed the work there. It was intended to hold this summer meeting each year” (Hopson, 1910. *33rd Annual Report of the Station*).



CAES

The Connecticut Agricultural Experiment Station

Putting Science to Work for Society since 1875



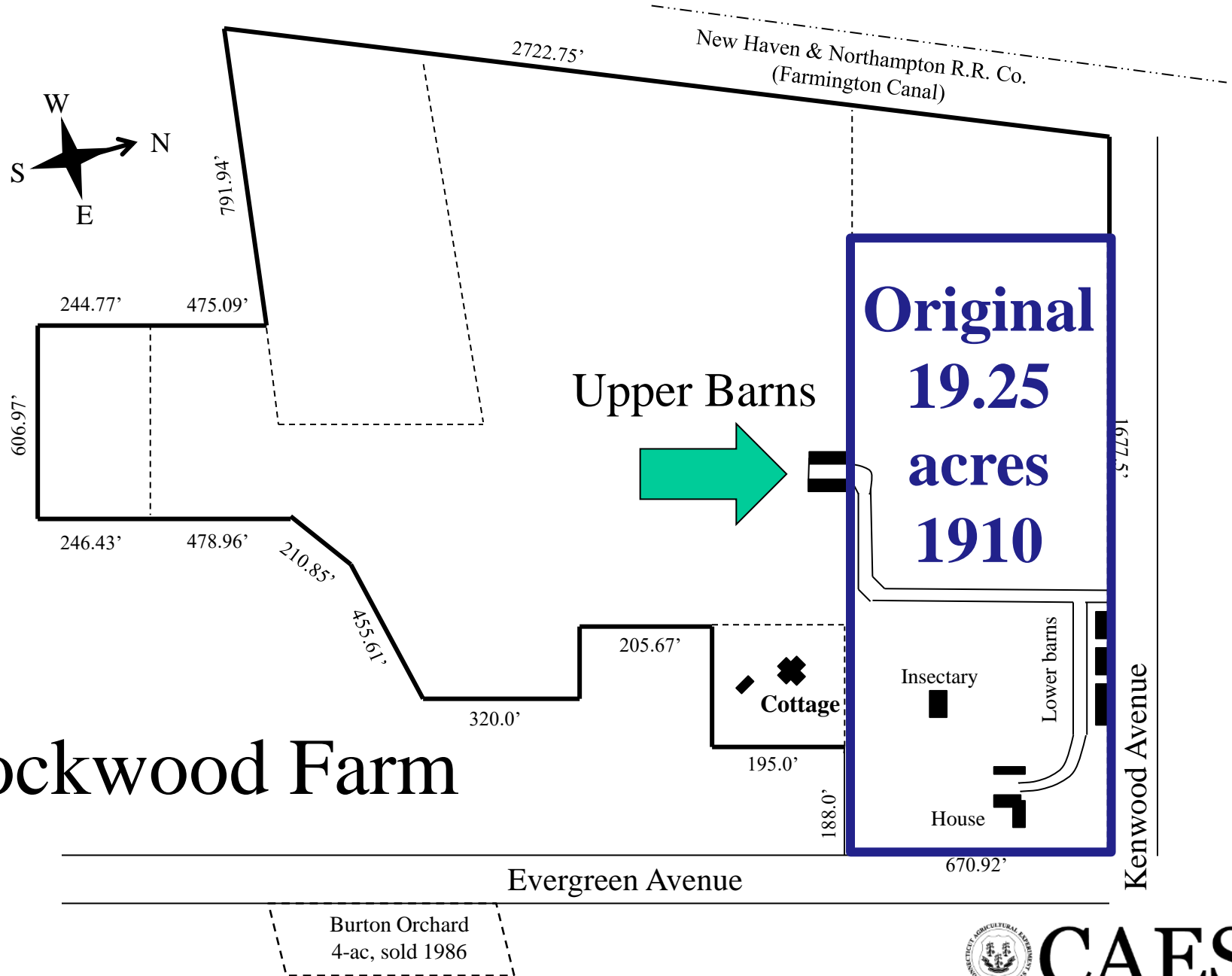
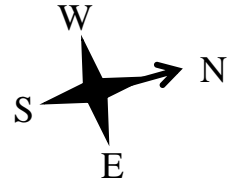
CAES

The Connecticut Agricultural Experiment Station
Putting Science to Work for Society since 1875

Mount Carmel Farm Purchased

- On November 28, 1910, the Station bought a farm of almost twenty acres at Mount Carmel for \$6,000 from with monies provided by the Lockwood Trust est. in 1896
- Not cultivated for many years; “west end was overgrown with bobbin birch, sumac, sweet fern, and blackberry vines”.
- Station set out an orchard of apples and peaches for experiment, has begun an experiment on the effect both on the crop and on the soil of fertilizers and manures, and another on the handling of an old and neglected orchard.
- The Centerville field was given up in the spring of 1912.

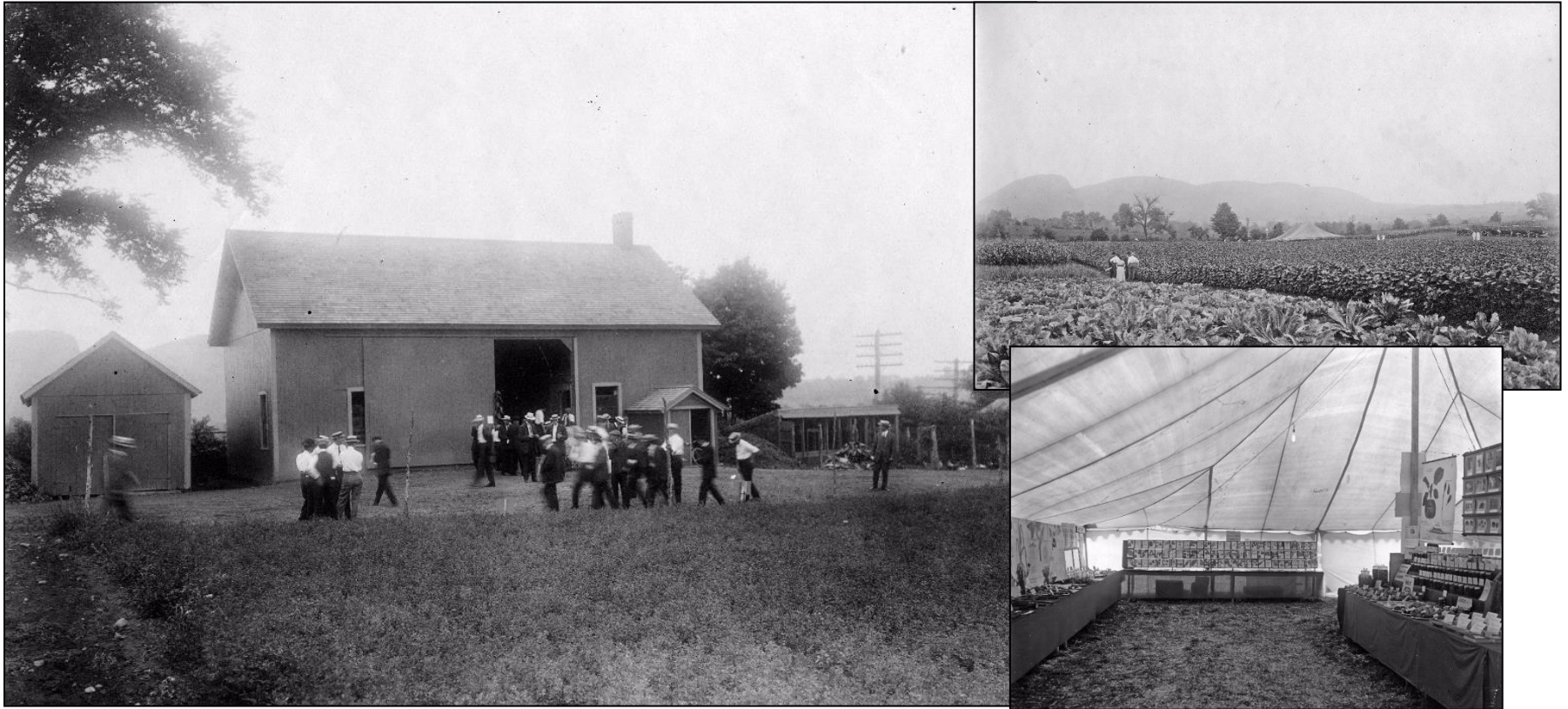
Lockwood Farm



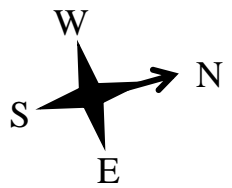
CAES

The Connecticut Agricultural Experiment Station
Putting Science to Work for Society since 1875

Field Day- 1914



- In 1914, a barn was built on the site of a ruined barn at a cost of \$1,593.29.
- A second field meeting was held at the Mt. Carmel Farm in August with an attendance of 250 people.

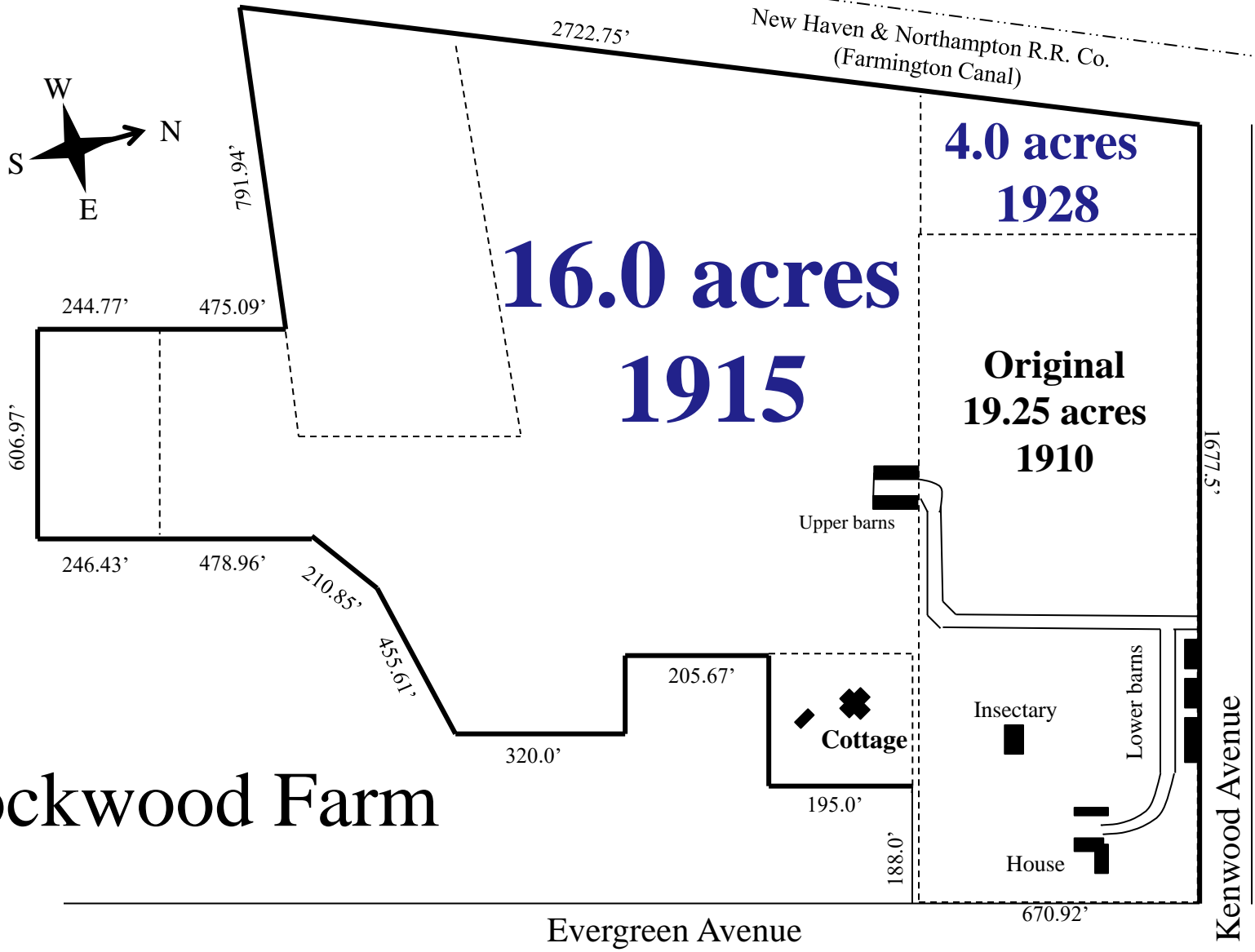


New Haven & Northampton R.R. Co.
(Farmington Canal)

**16.0 acres
1915**

**4.0 acres
1928**

**Original
19.25 acres
1910**



Lockwood Farm

Burton Orchard
4-ac, sold 1986



CAES

The Connecticut Agricultural Experiment Station
Putting Science to Work for Society since 1875

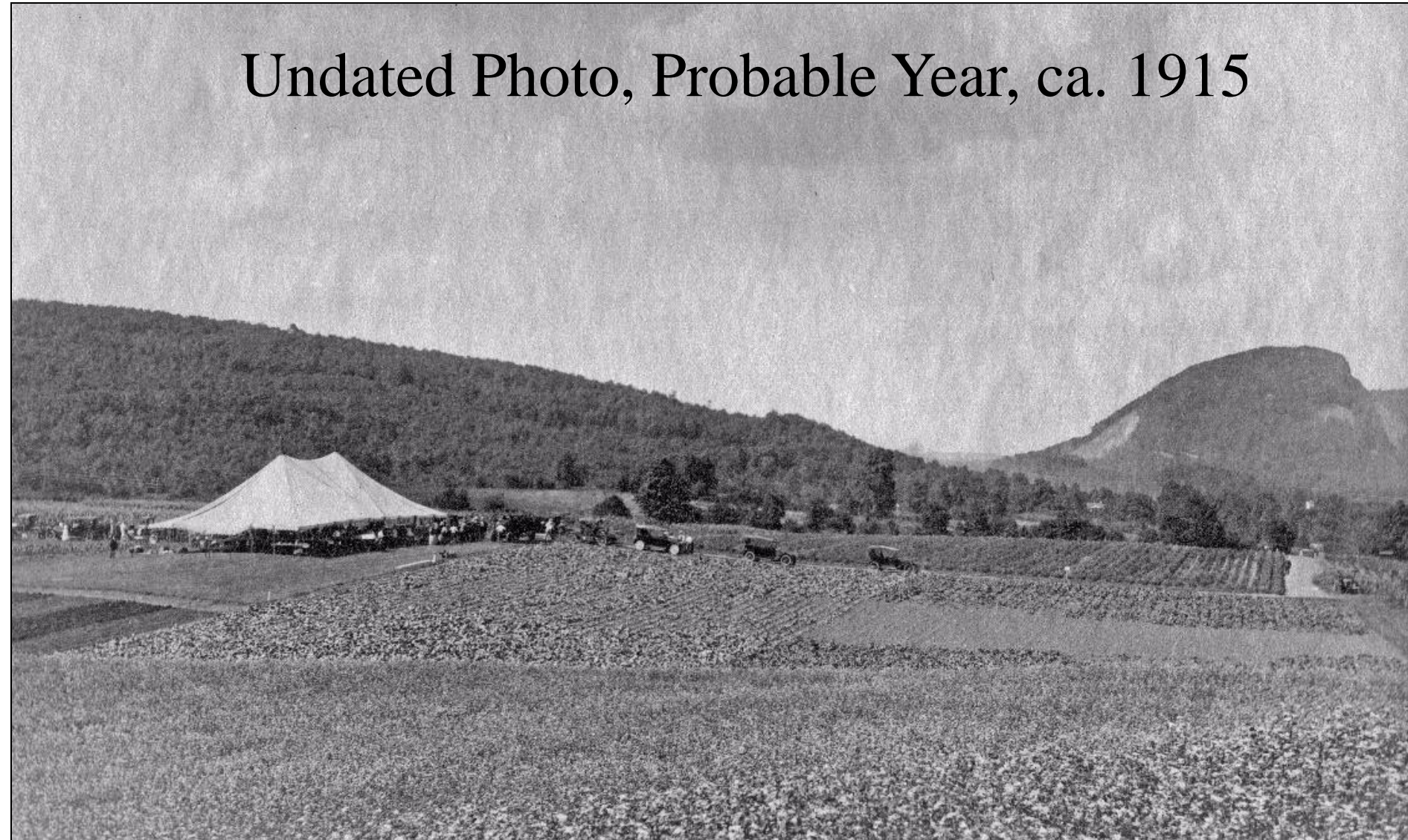
Field Day, Lockwood Farm

Undated Photo, ca. 1915?



Field Day, Lockwood Farm

Undated Photo, Probable Year, ca. 1915



Discovery Hybrid Corn



- Donald Jones hired 1915
- Against genetic dogma, he conducted trials crossing two crosses of corn
- Found double cross increased yield
- Published method in 1919

Donald F. Jones on Field Day, August 18, 1931

Field Day, 1924



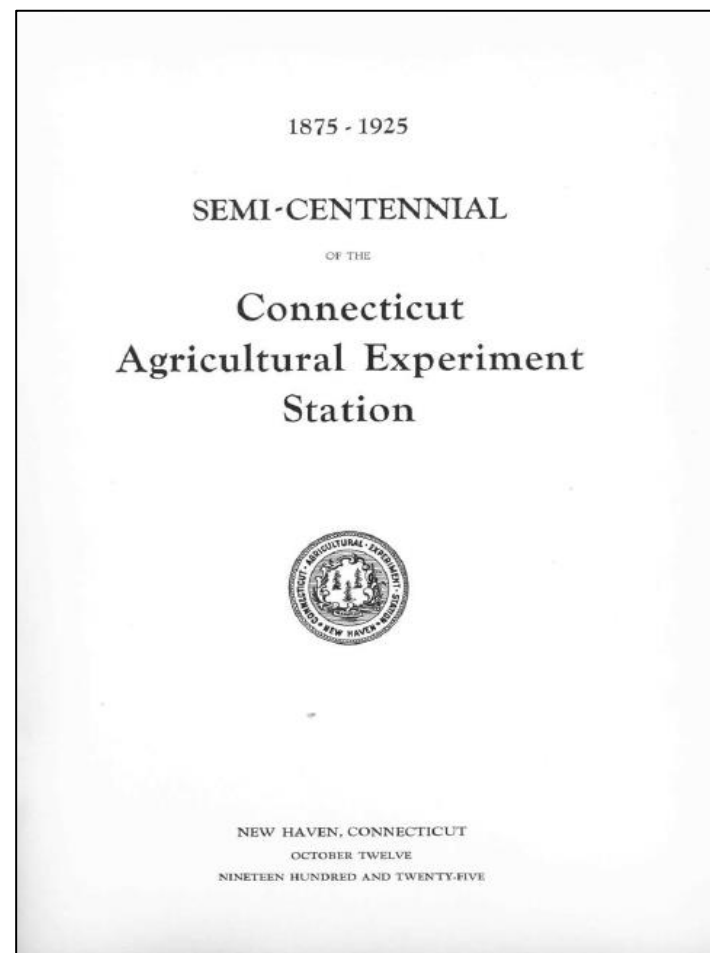
Talk under tent, 1924



CAES

The Connecticut Agricultural Experiment Station
Putting Science to Work for Society since 1875

There was no field day in 1925. The Board of Control voted to omit the usual field day because an exhibit was to be sent to the Charter Oak Fair and because of the Station's celebration of its 50th anniversary held on October 12th of that year.



Field Day at Mount Carmel Farm, 1940

CONNECTICUT AGRICULTURAL EXPERIMENT STATION FIELD DAY

Wednesday, August 21, 1940

While the Station Farm and Laboratories are open to visitors throughout the year, this day is a special "at home" to all citizens of the State. We extend to you a most cordial welcome.

Mount Carmel Farm is our principal "outdoor" laboratory where many of our experiments with plants are carried on. (There are also the Tobacco and Vegetable Farm at Windsor and the Experimental Forest at Rainbow.) This guide book gives directions for finding the various plots and exhibits, and at each will be found one of the Staff to explain.

W. L. SLATE, Director.

PROGRAM

- 10:00 A.M. Inspection of plots and exhibits.
12:00 Noon Basket Lunch. Food on sale.
1:30 P.M. Tent meeting.
- Greeting: Director W. L. Slate
Address: "Northeastern Agriculture and
the Present Emergency", by
Dr. W. H. Martin, Director,
New Jersey Agr. Expt. Station
- 2:30 P.M. Inspection of plots and exhibits. Orchard tour.

Special Bulletin 1940

Connecticut Agricultural Experiment Station New Haven



STATION FIELD DAY

WEDNESDAY, AUGUST 21, 1940
MOUNT CARMEL FARM
Evergreen Avenue, Hamden

PROGRAM

(Daylight Saving Time)

Guests are requested to register and obtain a printed guide at information booths on the parking space or in the tent.

- 10:00 A.M. Inspection of plots and exhibits.
12:00 Noon. Basket Lunch. Food on sale.
1:30 P.M. Tent meeting.

Greeting and Introduction of Speaker:
Director W. L. Slate.

Address: "Northeastern Agriculture and
the Present Emergency." Dr. W. H. Martin,
Director, New Jersey Agricultural Experiment
Station.

- 2:30 P.M. Inspection of plots and exhibits.
Orchard Tour.

DEMONSTRATIONS

Control of the European Corn Borer: The methods of treating corn, as well as the materials and tools used for control, will be shown in detail. There will also be a discussion of a profitable commercial-scale control experiment conducted in 1940. Corn from this acreage sold for more than \$300 an acre.

Pest Control on 10 Common Vegetables and Flowers: Plots on left and right of the grass path show contrast between treated and untreated crops. Included is a plot of early sweet corn sprayed for control of the corn borer and left untouched so that growers may



CAES

The Connecticut Agricultural Experiment Station

Putting Science to Work for Society since 1875

Visitors at Plot, 1940



CAES

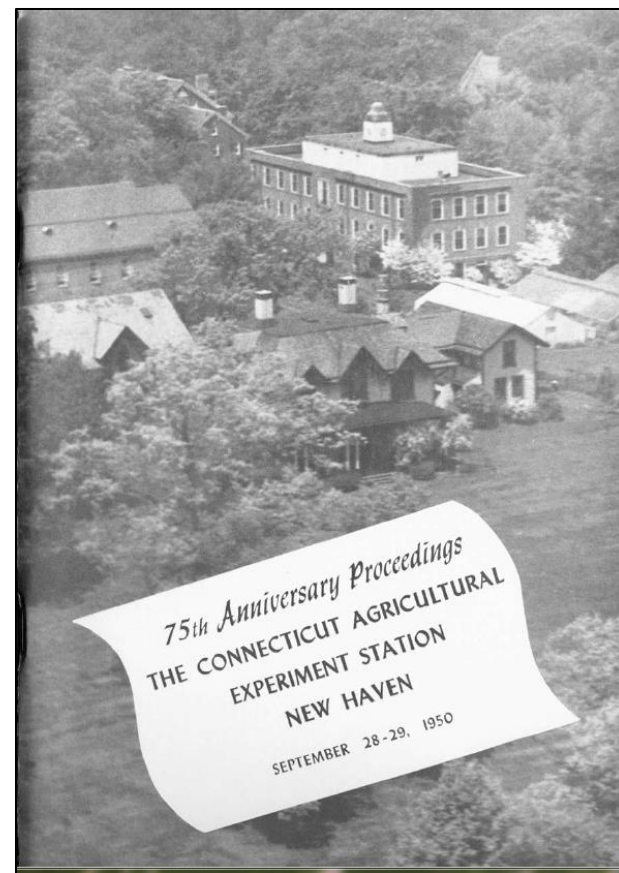
The Connecticut Agricultural Experiment Station

Putting Science to Work for Society since 1875

1940 Field Day



There was no field day during the war years of 1942-1944, when 16 staff were serving in the Armed Forces. After 3 years without a field day, attendance exceeded 1,000 people in 1945 and again in 1946. No mention is made of Field Day in 1950 with the celebration of the Station's 75th anniversary in New Haven in September. There were a few other years when it appears that the field day may not have been held, at least it is not mentioned in the annual report.



CAES

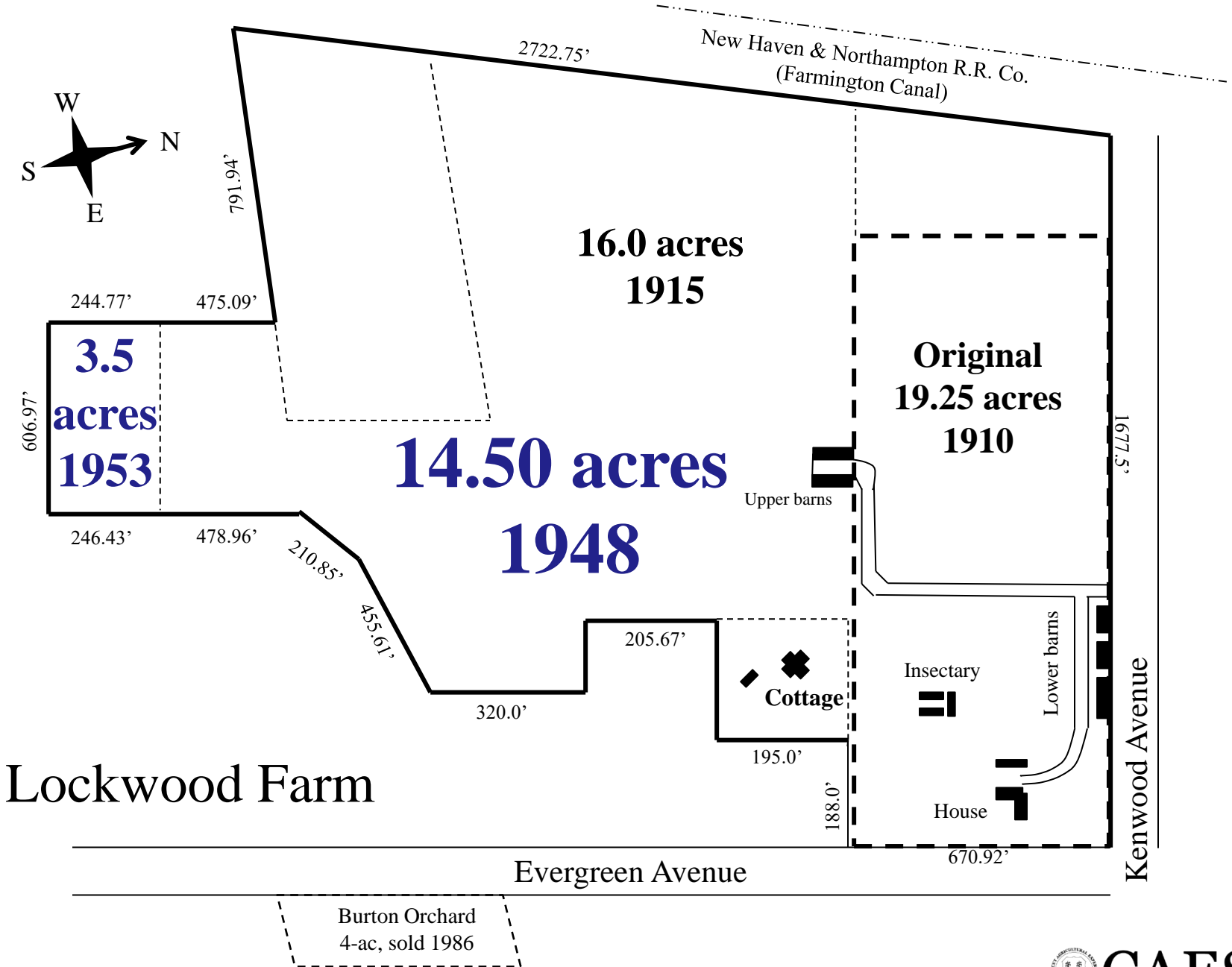
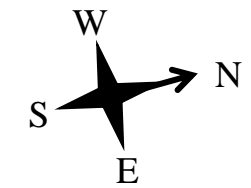
The Connecticut Agricultural Experiment Station
Putting Science to Work for Society since 1875

Field Day, 1946



CAES

The Connecticut Agricultural Experiment Station
Putting Science to Work for Society since 1875



Lockwood Farm

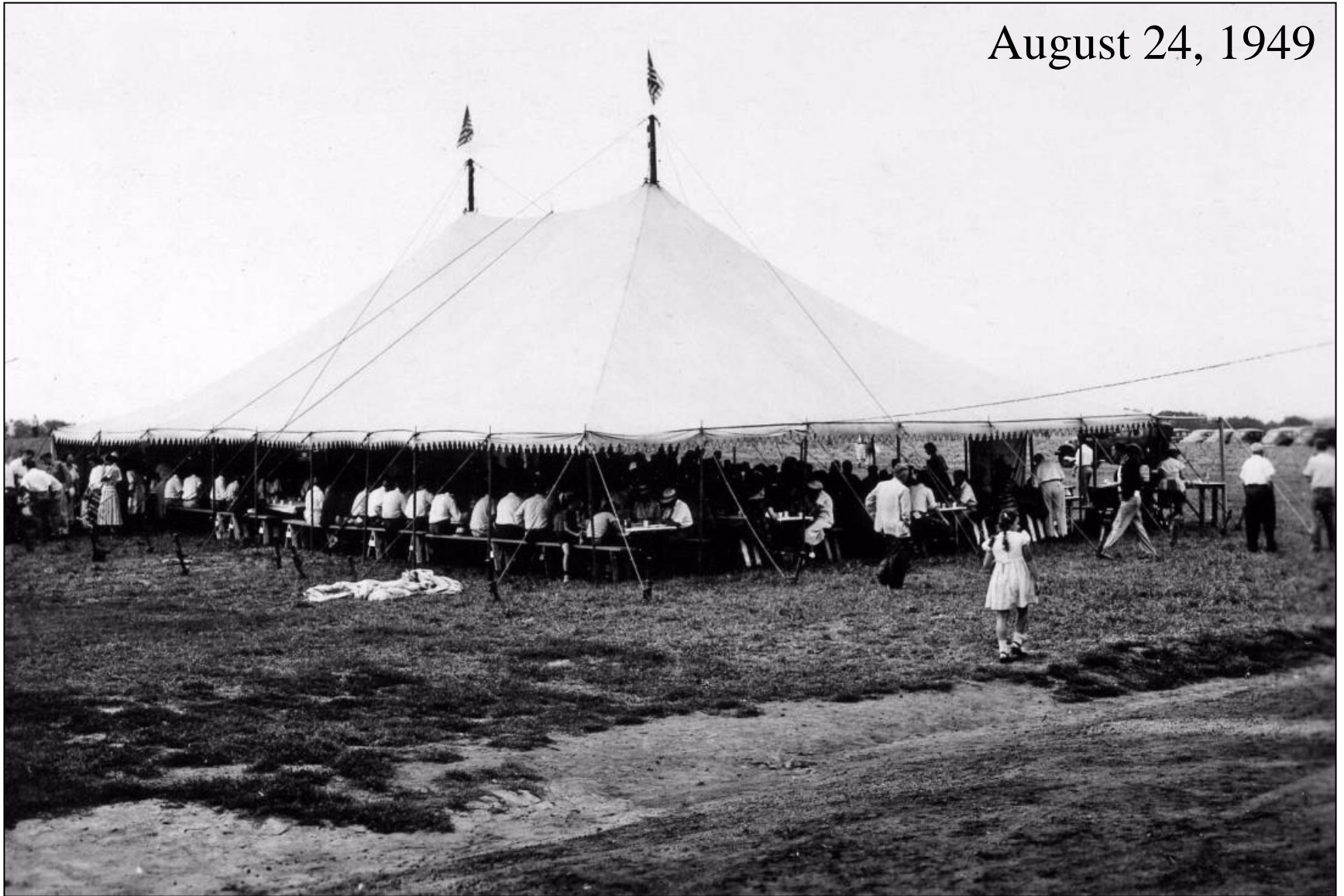


CAES

The Connecticut Agricultural Experiment Station
Putting Science to Work for Society since 1875

Field Day 1949

August 24, 1949



Field Day 1949

August 24, 1949





CAES

The Connecticut Agricultural Experiment Station
Putting Science to Work for Society since 1875

Field Day 1949

August 24, 1949





CAES

The Connecticut Agricultural Experiment Station

Putting Science to Work for Society since 1875

Field Day 1949

August 24, 1949

Eleanor Moquet serves coffee to guests





CAES

The Connecticut Agricultural Experiment Station

Putting Science to Work for Society since 1875

Tractor-Trailer Tour New Innovation for 1949

August 24, 1949



View Upper Barns & Sleeping Giant



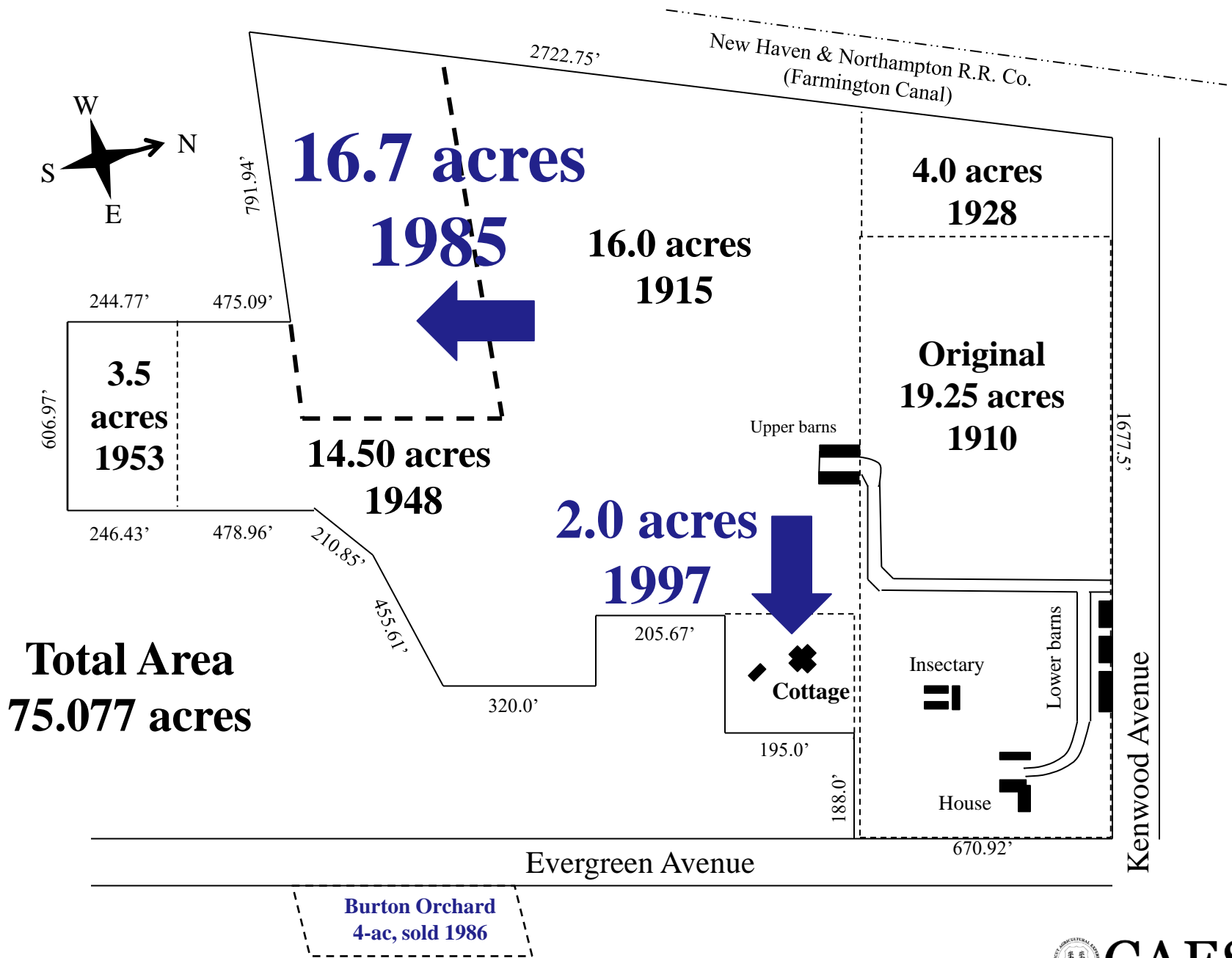
July 10, 1961

The upper barns were built in 1948 and 1953

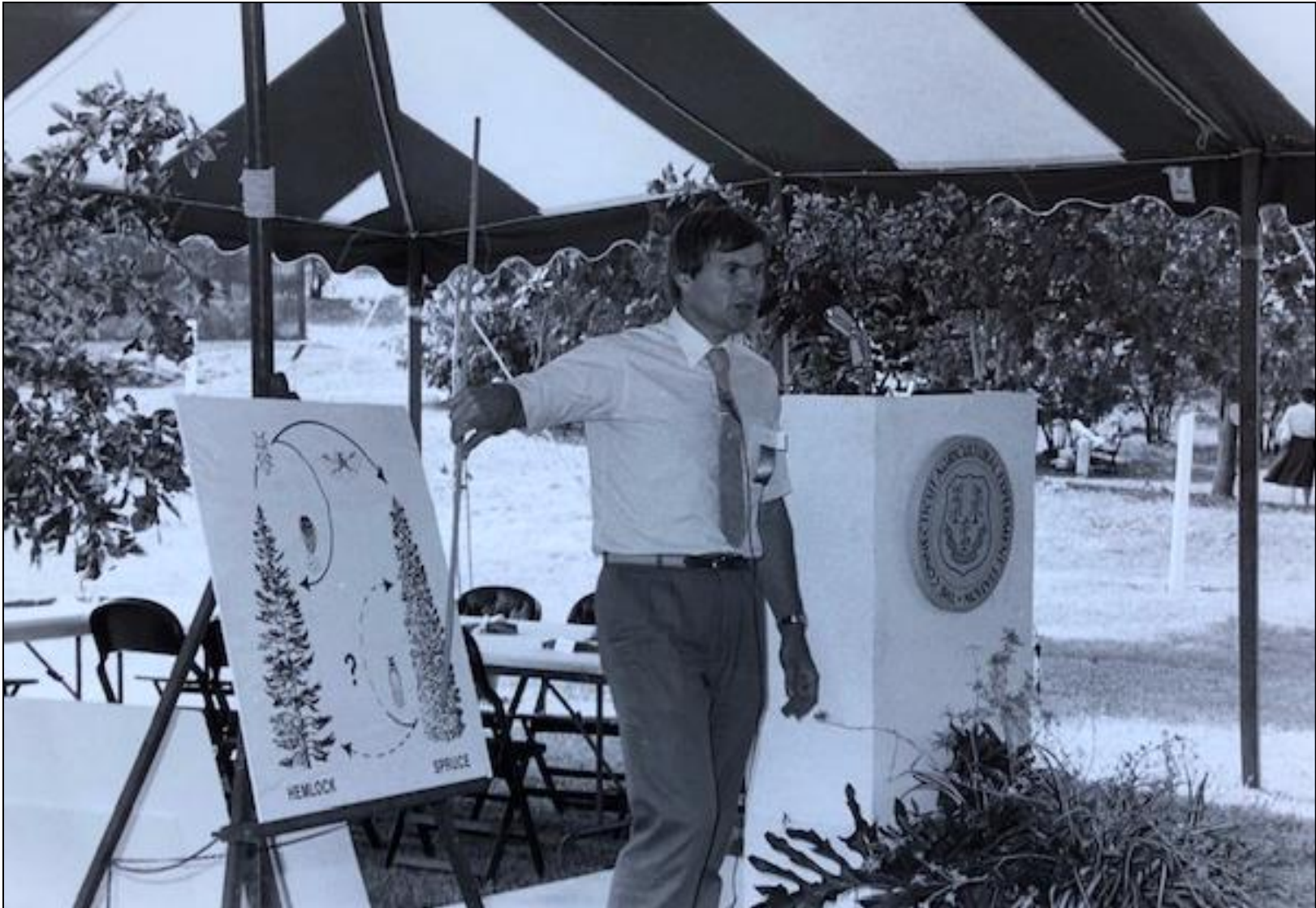


CAES

The Connecticut Agricultural Experiment Station
Putting Science to Work for Society since 1875



Plant Science Day 1988



Plant Science Day 1988



Plant Science Day 1988



Plant Science Day 1988



The Garden began in the fall of 1996 with a partnership between CAES and Federated Garden Clubs of Connecticut



CAES

The Connecticut Agricultural Experiment Station
Putting Science to Work for Society since 1875

2008



This undated photograph of the cottage has the screened porch clearly visible at the right along with a second entrance on the side.



The 1920s cottage and 2 acres next to the farm purchased by the Board of Control in 1997 was extensively renovated. Farm today covers 75.077 acres

Technical Demonstrations

2018



Bus tours



Old insectary
demolished in 2001





Begin adding tables for outside groups in 2002
Associations and Groups line the “Avenue”

Passport, Kid's Corner, Girl Scouts



PASSPORT
FOR KIDS

To

PLANT
SCIENCE DAY
2011



www.ct.gov/caes

Children's Passport for Kids 2005-present

2008



2018

Plant Science Day 2007



The “Tick Tent” (1997) became the Public Health Tent



Plant Science Day 2008





2014

Gov. Malloy & Dr. Andreadis

Five Governors have made an appearance to speak or make remarks at Lockwood Farm on Plant Science Day.

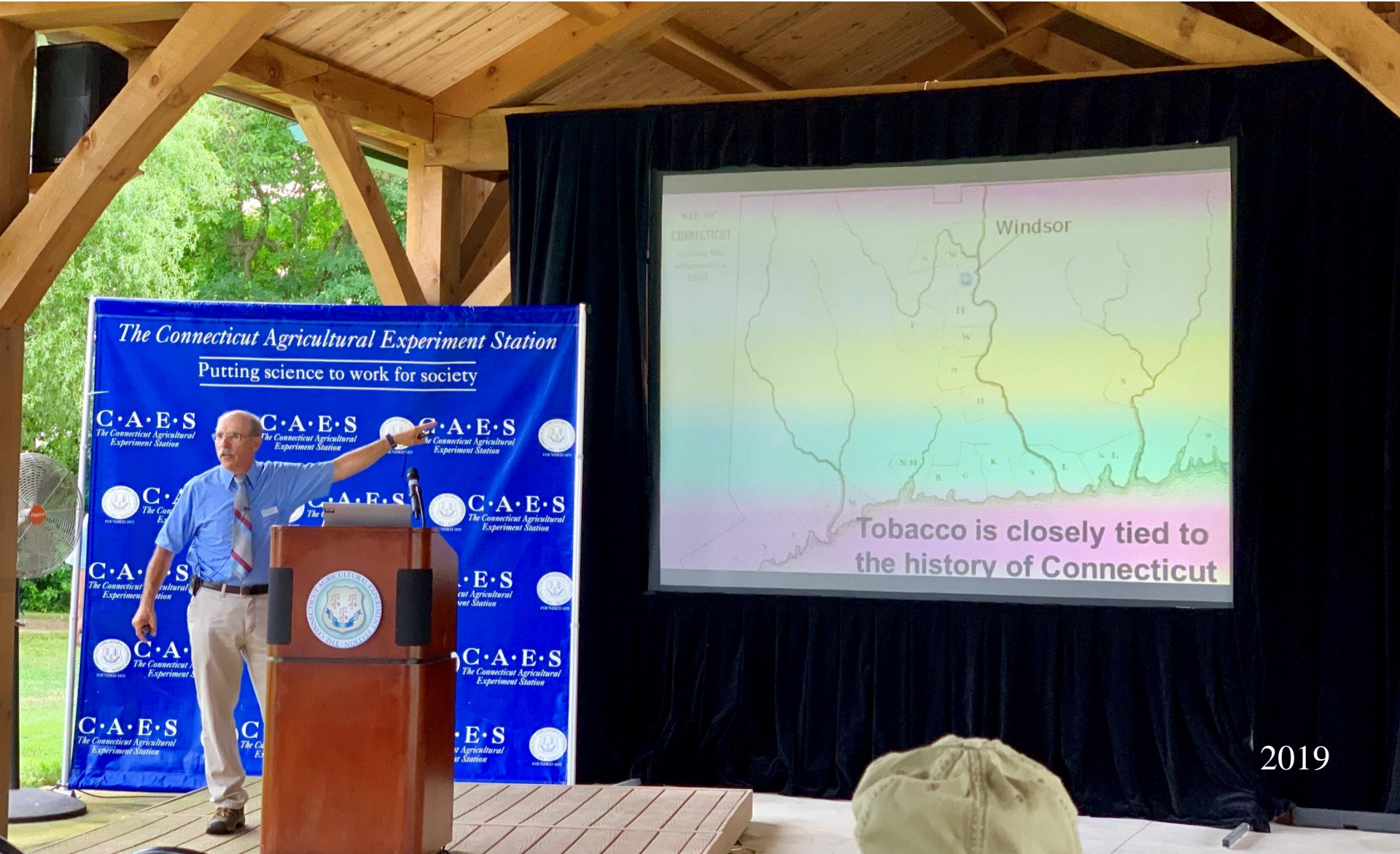
Gov. Dannel P. Malloy in 2014
Gov. Lowell P. Weicker in 1991
Gov. Ella T. Grasso in 1975
Gov. John Dempsey in 1960
Gov. Wilbur Cross 1931 and 1934

The Pavilion at Lockwood Farm was Constructed in 2015.
First used for Plant Science Day in 2016.



Photo: October 20, 2015; silo cell tower was built in 1998

PowerPoint Presentations & Larger Screen



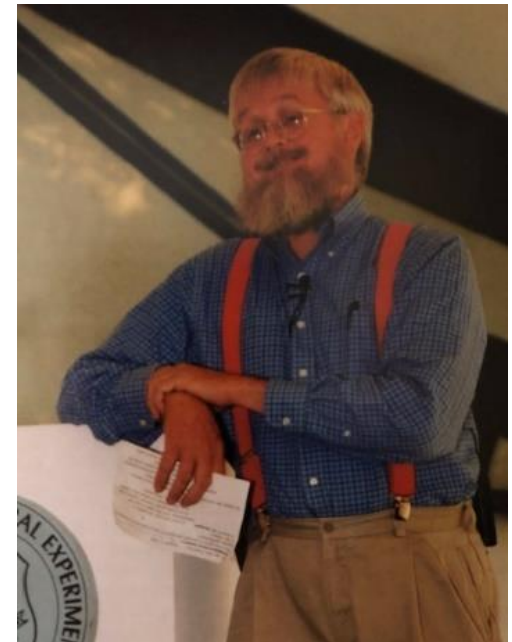
2019

Audio Speakers and Additional Screens



Mt. Carmel Field Day Trivia

- No Field Day 1950, during war years, 1942-44, a few other years
- Only Saturday Field Day was in 1958
- Mt. Carmel Field Day was first called Lockwood Farm Field Day in 1960 and for eight years after that, was called “Science at Work Day”.
- First called Plant Science Day in 1969
- Averaged attendance 1960-2018 was about 993
- 973 attended in 2019, 2020 was virtual
- Attendance exceeded 1,500 on three occasions (1934 Gov. Cross, 1961 Gov. Dempsey, and in 2002 when Roger B. Swain delivered the Samuel W. Johnson Memorial Lecture).



Improvements & Changes Over Time

- Bird & Butterfly Garden
- Main Tent replaced with a Pavilion
- Switched from Posters to PowerPoint Short Talks and added Multiple Screens
- New Sound System, Improved Registration
- Technical Demonstration Tent Talks
- New Cottage
- Involvement of Children (Passport, Girl Scouts)
- Participation of Outside Exhibitors

Field Day to Plant Science Day 111 Years and Counting



2017

Kirby C. Stafford III
Department of Entomology
123 Huntington Street
P. O. Box 1106
New Haven, CT 06504

Phone: 203.974.8485

Email: Kirby.Stafford@ct.gov

Website: portal.ct.gov/caes

