



# GATHER NEW HAVEN

111th Plant Science Day  
The Samuel W. Johnson Memorial Lecture

BRENT PETERKIN  
08/2021



**URBAN ECOSYSTEMS  
AND  
CULTIVATING COMMUNITIES**

**URBAN ECOSYSTEMS:** A DYNAMIC COMPLEX OF PLANT, ANIMAL AND MICRO-ORGANISM COMMUNITIES AND THEIR NON-LIVING ENVIRONMENT INTERACTING AS A FUNCTIONAL UNIT THAT INCLUDES ALL OF THE ORGANISMS IN A GIVEN AREA INTERACTING WITH THE PHYSICAL ENVIRONMENT SUCH THAT A FLOW OF ENERGY LEADS TO EXCHANGE OF MATERIALS BETWEEN LIVING AND NON-LIVING PARTS OF THE SYSTEM.

**URBAN ECOLOGY:** BRANCH OF ECOLOGY, STUDY OF THE INTERACTIONS BETWEEN ORGANISMS AND THEIR ENVIRONMENT, DEALING WITH THE ENVIRONMENT AND ITS ORGANISMS SPECIFICALLY IN THE CONTEXT OF BUILT-UP AREAS DOMINATED BY HUMAN SETTLEMENT AND HUMAN ACTIVITIES.

**HUMAN ECOLOGY:** THE STUDY OF HOW HUMAN HEALTH IS AFFECTED BY URBAN LIVING CONDITIONS AND THE STUDY OF HOW HUMAN HEALTH IS AFFECTED BY URBAN LIVING CONDITIONS. A MULTIDISCIPLINARY APPROACH TO IMPROVING LIVING CONDITIONS FOR THE HUMAN POPULATION IN CITIES WITH A FOCUS ON THE ECOLOGICAL FUNCTIONS OF URBAN ECOSYSTEMS FOR PEOPLE, INCLUDING URBAN PLANNING ASPECTS OF SOCIAL AND ENVIRONMENTAL SCIENCES.

**NATURE CAN HEAL AND  
GROW COMMUNITIES**

**COMMUNITIES CAN RESTORE  
AND SUSTAIN NATURE**







Gregoire Alessand











**EGO**



**GREED  
ENVY**



**SELF  
HATRED**



**ANIMOSITY**

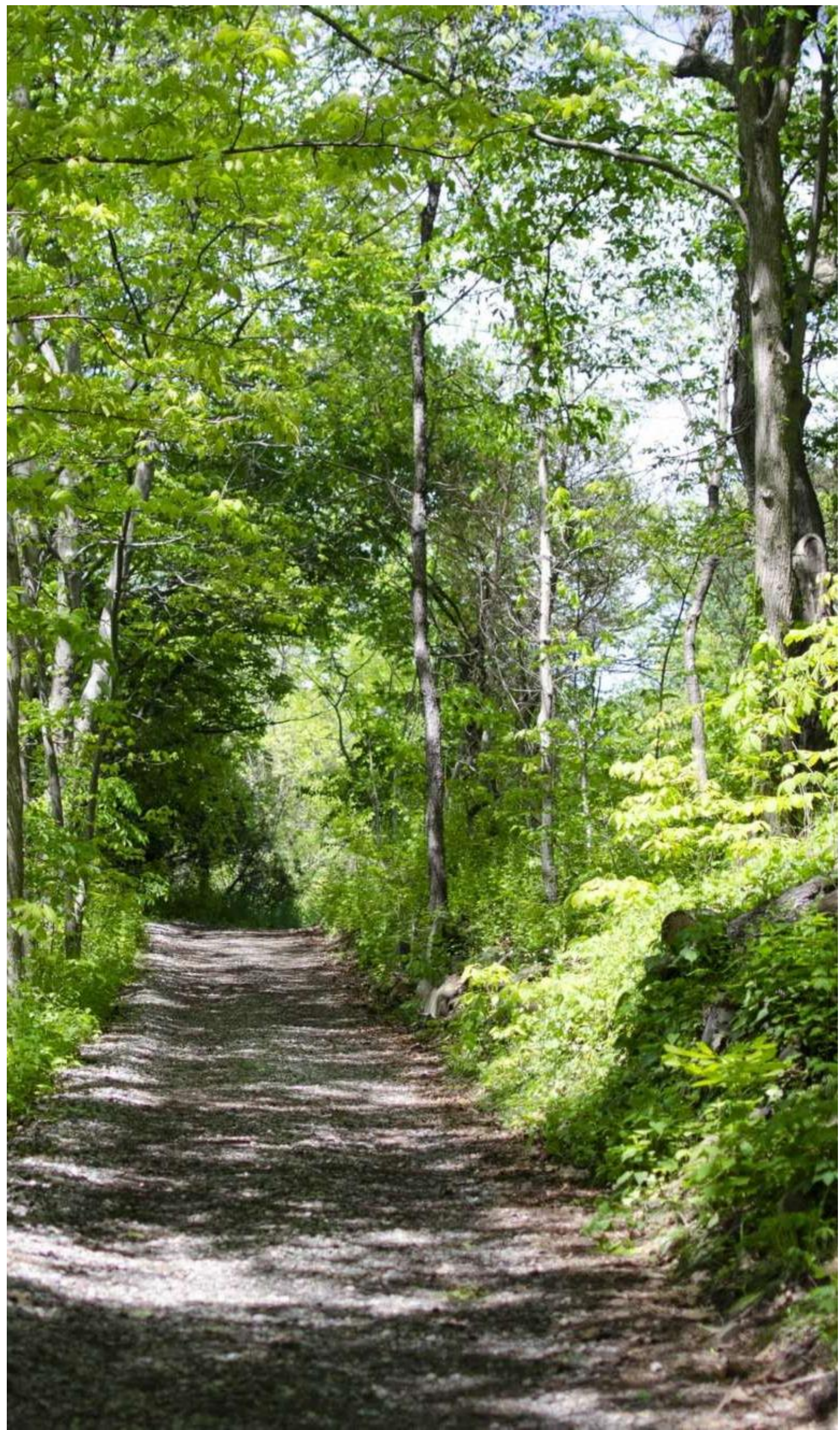
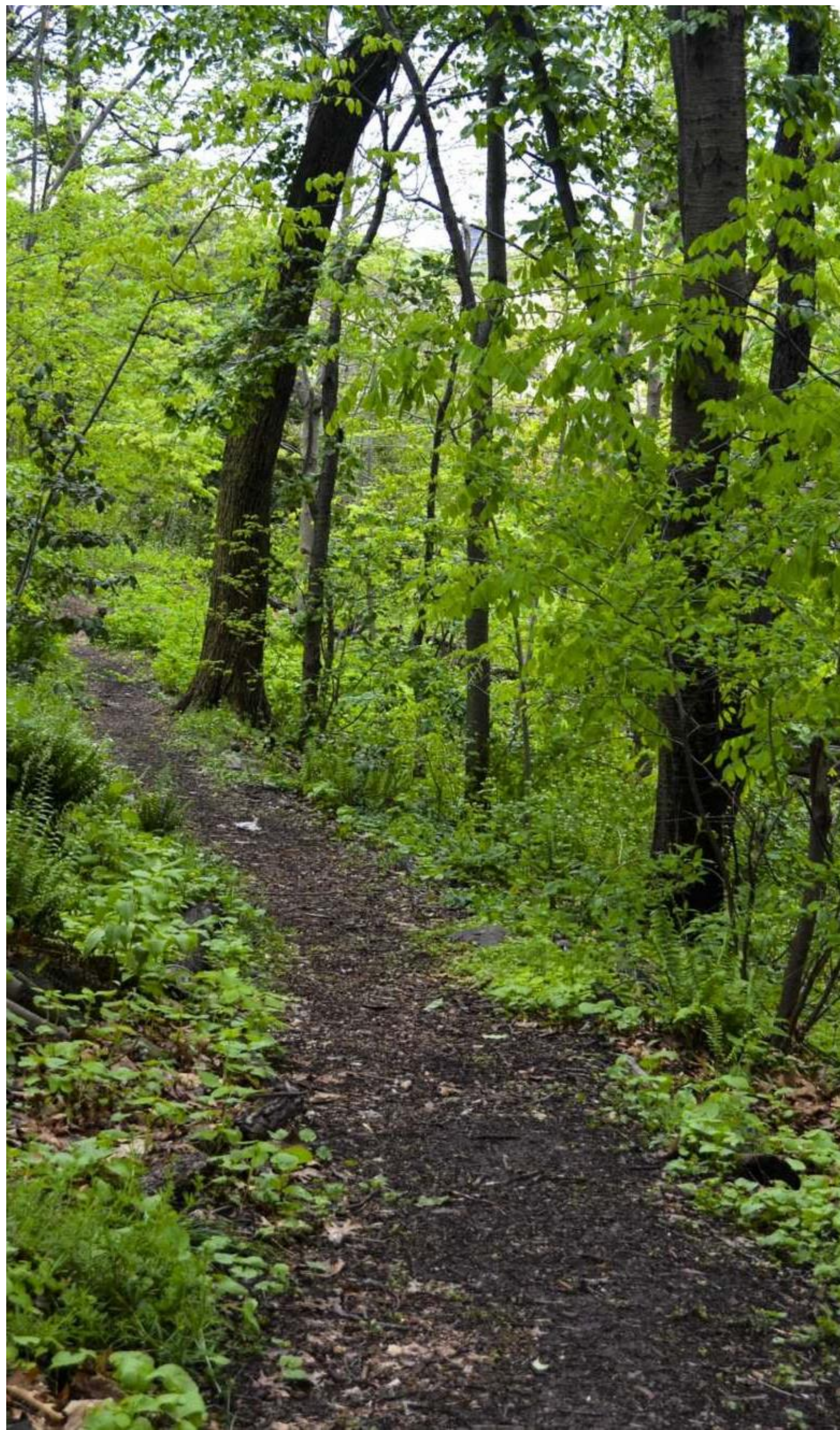
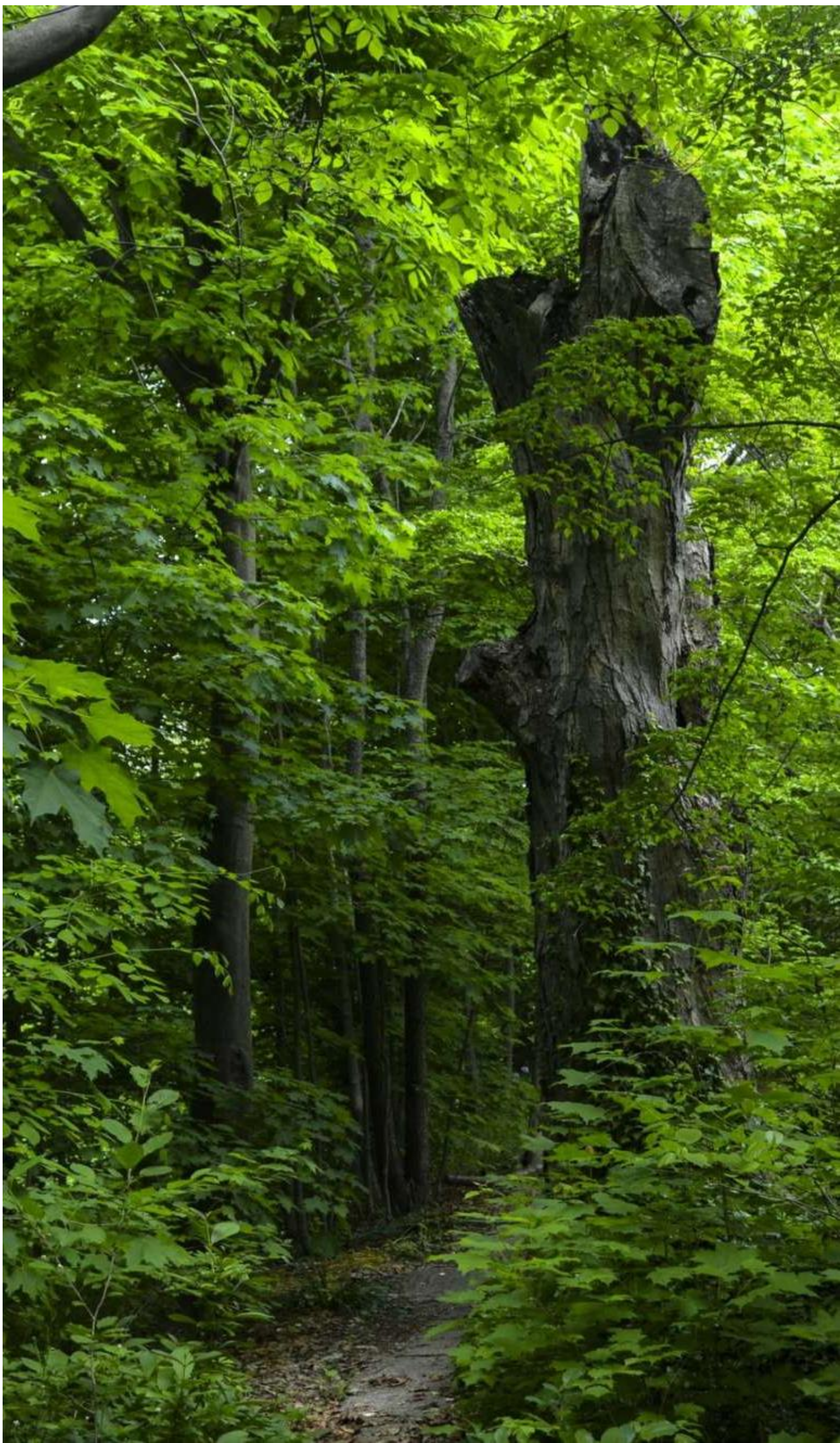


**DESPAIR**











# GATHER NEW HAVEN



## Plant-based Nutrition, Education, Engagement and Wellness

---

Urban agricultural properties consisting of farms and gardens support the growing and distribution of locally grown vegetables and fruits to participants in the Plant-based Nutrition and Wellness program and community stakeholders who desire agricultural, nutrition, culinary, diet, and wellness education and engagement activities. **Key Initiatives: Wellness Program, Urban Farm Operations, Community Gardens , Growing Entrepreneurs.**



## Urban Environmental Education, Stewardship and Exploration

Gather New Haven promotes and provides urban ecological education, enrichment, wellness, recreation, and conservation in coastal, marine, and terrestrial environments. Shore exploration and Learn to Sail programs advance positive youth development through a STE(A)M based curriculum, team/leadership skill building and environmental education/stewardship activities. Urban environmental education is used to cultivate compassion amongst institutional and community partnerships to foster relationships with nature through social engagement and conservation efforts that are symbiotic and sustainable. **Key Initiative: Schooner, Inc., Land Trust Preserves**



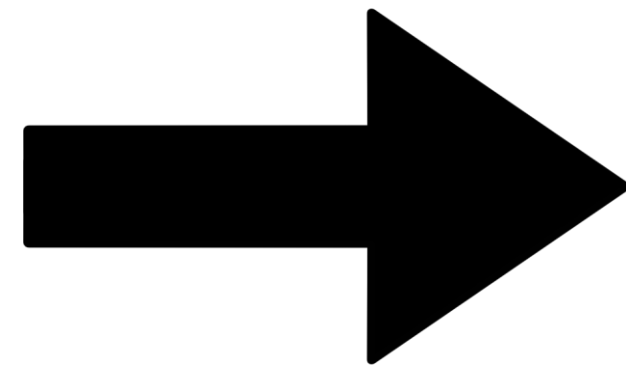
## Community Engagement and Social Entrepreneurship

---

Gather's Farm Stand is a viable and beneficial social enterprise whose retailing of affordable produce to low income consumers generates modest revenues that fund urban agriculture initiatives. Growing Entrepreneurs immerses youth in enrichment, education, entrepreneurship, and employment as catalyst to spur personal and professional development. Environmental, food, and social justice matters are drivers for community outreach across the organization.







# FOOD JUSTICE

The Food Justice Movement works to ensure universal access to nutritious, affordable, and culturally-appropriate food for all, while advocating for the well-being and safety of those involved in the food production process. The movement aims to address disparities in food access, particularly for communities of color and low-income communities, by examining the structural roots of our food system. Food Justice addresses questions of land ownership, agricultural practices, distribution of technology and resources, workers' rights, and the historical injustices communities of color have faced. Food Justice is closely intertwined with environmental justice and sustainability movements. (Boston University Community Service Center)

# ENVIRONMENTAL JUSTICE

Environmental racism refers to the many ways that communities of color—in the United States, Black communities in particular—face greater harms from environmental factors.

Environmental racism is inseparable from racial segregation. Residential segregation—which is itself a result of individual and systemic racism, including public policy choices at every level of government and exclusionary choices by financial actors—means that people of color are often concentrated in neighborhoods that have frequently been disempowered, both politically and financially.

(The Century Foundation)





# GATHER NEW HAVEN PROGRAMS



**SCHOONER CAMP:**  
200+ YOUTH  
ANNUALLY SUPPORTED

**GROWING ENTREPRENEURS:**  
17-20 HIGH SCHOOL STUDENTS  
ANNUALLY ENROLLED



**FARM-BASED WELLNESS:**  
32-40 MEMBER COHORTS

**COMMUNITY GARDENS:**  
EST. 500+ GARDENERS





# GATHER NEW HAVEN PROPERTIES





# COMMUNITY CHALLENGES

4% of Connecticut Covid-19 infections were in New Haven.

66.7% YTD Increase in fatal gun injuries.

16.2 percent of New Haven's population is estimated to be food insecure

2020 Protest against anti-Black structural racism.

Remote learning has led to decreased academic performance amongst K-12 students.





**HOW CAN THE NATURAL ENVIRONMENT HELP?**





**NEW HAVEN**

**9 MAJOR PARKS**

**6 WALKING TRAILS**

**26 PUBLIC PLAY GROUNDS**

**COMMUNITY GARDENS**

**WATERSHED & COASTLINES**

**COMMUNITY BASED ORGS**

**ENVIRONMENTALIST & EDUCATORS**



# ECOSYSTEM SERVICES

1

**Outdoor Recreation**

2

**Mental Health and Stress  
Reduction**

3

**Green spaces help  
communities address  
public health issues like  
violence, pollution and  
food insecurity**

4

**Green Economy**



# COMMUNITY HEALING





# HUMAN ECOLOGICAL VALUE

## PRESENCE

attractive public green spaces help spur socially connected neighborhoods — which enhances psychological health through positive social interactions and a sense of community.

## DESIGN AND PLANNING

Landscape architects with an environmental justice focus.

## QUALITY OF LIFE IMPROVEMENTS

Storm water flood mitigation, air pollution reduction,





A photograph of a greenhouse filled with rows of young green plants, likely seedlings, growing in black plastic mulch. The plants are arranged in neat rows, and the background shows the structure of the greenhouse with translucent panels. The text "ENVIRONMENTAL JUSTICE LEADERSHIP" is overlaid on the image in a bold, sans-serif font. "ENVIRONMENTAL" is white, "JUSTICE" is light green, and "LEADERSHIP" is light blue.

# ENVIRONMENTAL JUSTICE LEADERSHIP



**THANK YOU**



**END OF PRESENTATION**