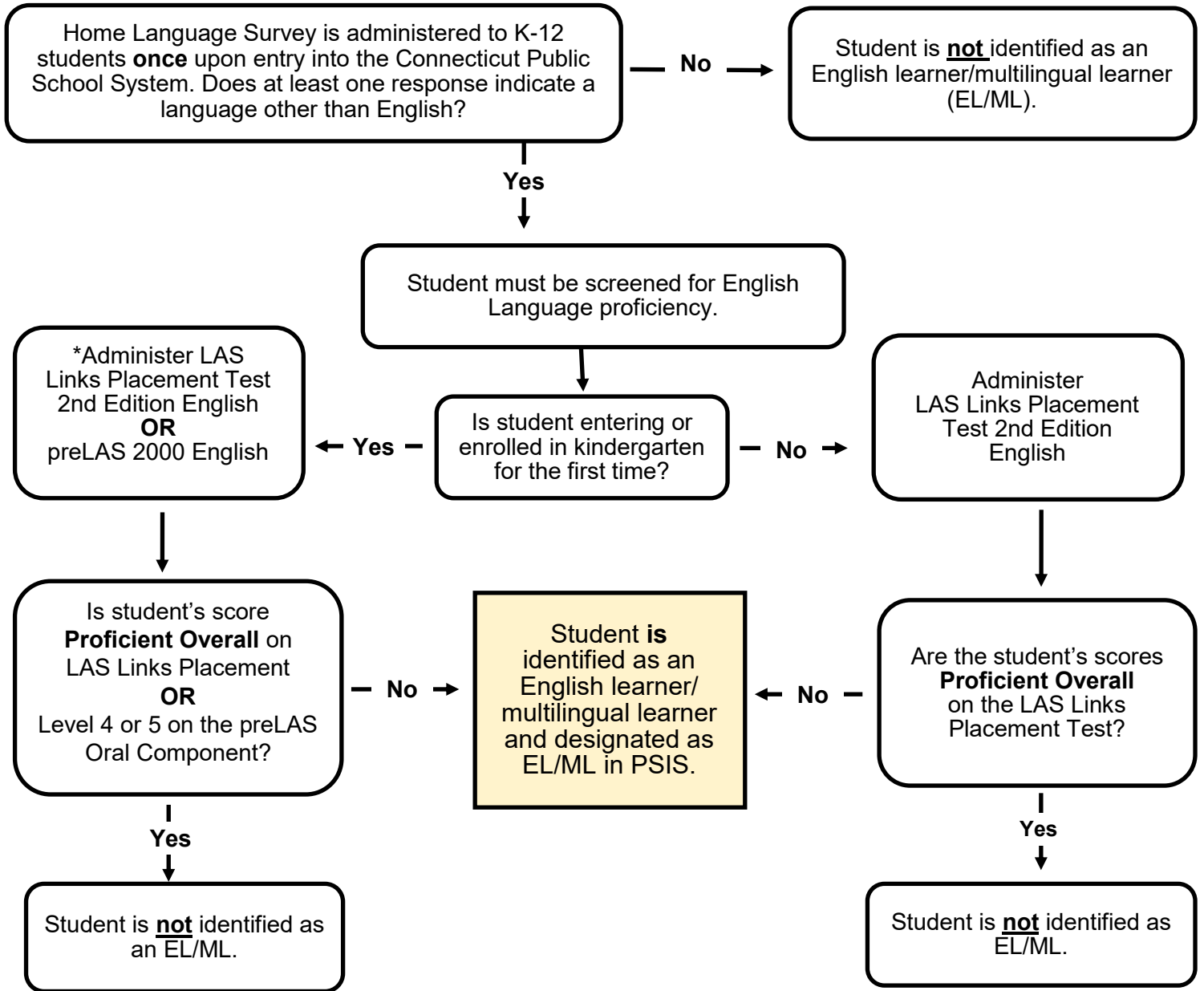




**Connecticut State Department of Education  
English Learner/Multilingual Learner  
Identification Process Flowchart Grades K-12**



\*In lieu of administering the LAS Placement Test 2nd Edition English provided to districts digitally, districts may choose to administer the preLAS 2000 English version Oral Component to students enrolled in kindergarten for identification purposes.

Additionally, districts may choose to screen and identify English learners/multilingual learners who are at least 4 years old, enrolled in public preschool programs, and in PSIS with the preLAS 2000 English version.

Some districts may choose to administer the full form of the LAS Links, either Form C or Form D, in lieu of or immediately after the LAS Placement Test to identify students in Grades K-12.

If the student's Overall score on the full Form C/D is in Level 1, 2, or 3, then the student **is** identified as an EL/ML.

If the Overall score is in Level 4 or 5, the student **is not** identified as an EL/ML.

Please note, LAS Links Form C and Form D require more extensive administration time than the LAS Links Placement Test. The CSDE will not cover the cost of the full Form C/D for these identification purposes.