

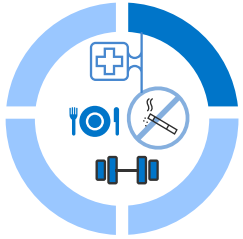


# COLORECTAL CANCER IN CONNECTICUT

# 2020

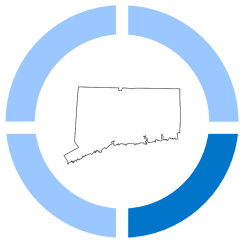
# MARCH

## Colorectal cancer is...



### Preventable

through regular screening that can find and remove pre-cancerous polyps; by managing risk factors such as body weight, exercise, and diet.



### The 4th most common

cancer diagnosis and cause of cancer death in Connecticut, with 33 cases and 10 deaths per 100,000 people in 2017.



### Decreasing

for the last 20 years, with an annual decline of 4% in rates of incidence (new cases) and mortality (deaths).



### Treatable

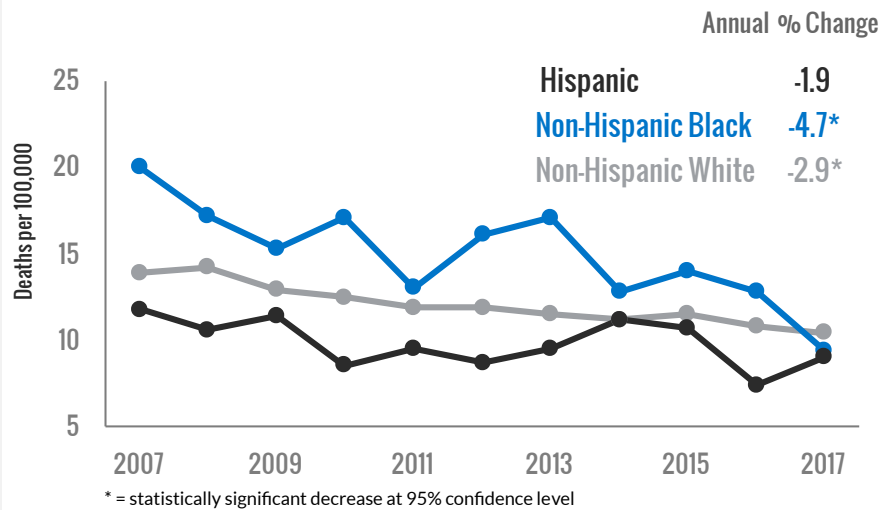
when detected early using screening strategies, including stool tests, sigmoidoscopy, colonoscopy, and colonography.



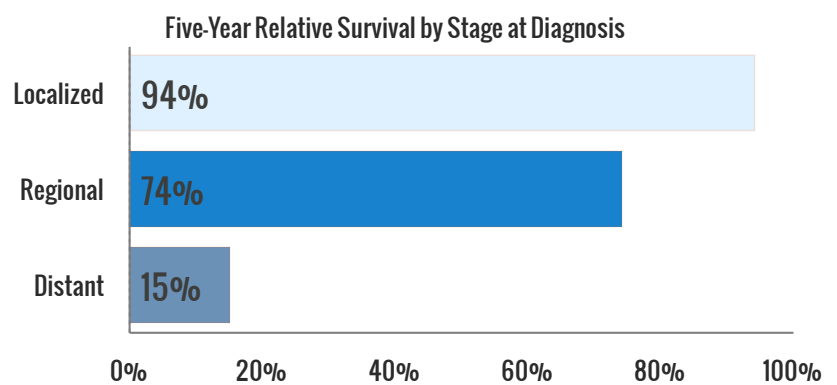
The U.S. Preventive Services Task Force recommends screening for colorectal cancer in adults ages

## 50 - 75

Mortality rates have decreased significantly for non-Hispanic black and non-Hispanic white Connecticut residents, due, in part, to the increase in colorectal cancer screening.



When detected at an early stage, colorectal cancer can be treated more effectively with 94% of patients surviving at least five years, relative to the general population.

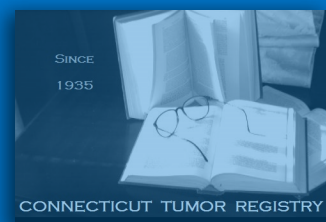


However, if colorectal cancers are diagnosed at a distant stage, when the cancer has spread to other parts of the body, only 15% of patients survive five years, relative to the general population.

### CONTACT US

Connecticut Tumor Registry  
410 Capitol Avenue, MS# 13TMR  
P.O. Box 340308  
Hartford, CT 06134-0308

Phone: (860) 509-7163  
Fax: (860) 509-7161  
Website : <http://www.ct.gov/dph/TumorRegistry>



This work has been supported by federal funds from the National Cancer Institute, National Institutes of Health, Department of Health and Human Services, under Contract No. HHSN261201800002I.